



## **International Combustion and Controls**

*A Division of California Boiler*

International Combustion and Controls (ICC) Associates have over 40 years of experience operating, maintaining, and improving power plants, utility plants, and industrial steam plants from 30,000 lbs/hr steam plants up to 750mw power plants firing any fuel. We are Subject Matter Experts in Steam Plant Operations and Maintenance, NFPA Burner Management Systems, Combustion Systems, and Control Systems.

### **We service and improve all types of Burner Systems**

<i>Single Point Positioning</i>	<i>Fully Metered/Cross Limited</i>
<i>Parallel Positioning</i>	<i>Oxygen/NOx/CO Trim</i>
<i>Parallel Positioning with Position Feedback</i>	<i>Single and Three Element Level Control</i>

### **We service all types of Fuels**

*Natural Gas • #2 - #6 Oil*  
*Single, Dual, Multiple and Combination Firing*  
*Liquid and Gaseous Waste Fuels • Hydrogen*

**Honeywell**



**AUTOFLAME**



**Allen-Bradley**



**SIEMENS**



[www.californiaboiiler.com](http://www.californiaboiiler.com)



## **International Combustion and Controls**

*A Division of California Boiler*

5331 Business Drive • Huntington Beach, CA 92649

## ICC Provides The Following Services

- Burner start-up, tuning and testing.
- Annual calibrations on all instrumentation.
- Burner Management Systems improvements and upgrades from Basic Microprocessor to Fully Redundant PLC Systems with First-Out Indication and Time-Stamping
- Combustion Control improvements and upgrades from Single-Loop to DCS and from Single-Boiler to Entire Steam and Water Plants



## BMS Standard Offering

**Panel Arrangement and Wiring Diagrams**

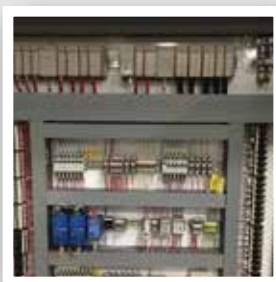
**BMS Sequence of Operations**

**I/O List**

**Communications Map for External System**

*Ethernet IP, Modbus TCP/IP or Modbus RTU*

**HMI Screenshots**



[www.californiaboiler.com](http://www.californiaboiler.com)

 **International Combustion and Controls**  
A Division of California Boiler

5331 Business Drive • Huntington Beach, CA 92649