



SURGEGAURD™ Meter Base Surge Arrester

Product Data Sheet

The Brooks SurgeGuard surge arrester offers a high level of 'whole house' surge protection in a low profile meter socket adapter. Utilities considering offering 'whole house' surge protection should consider SurgeGuard!

FEATURES

- UL-Listed 1.2" low-profile polycarbonate plug-in adapter for residential service entrance surge protection
- Patented dead front safety shield protects installer
- 260 amp continuous rating
- Optional 5th jaw for reliable neutral/ground connection
- Fail-safe LED indicators provide the homeowner with quick and easy check of the unit's status
- Dual 40mm MOV's w/ internal thermal disconnects
- 45,000 amp rated withstands multiple surges, providing expected 20 year life
- 15 year product warranty

APPLICATIONS

The SurgeGuard has been specifically designed for installation at the electric meter socket for 'whole house' residential surge protection. Unparalleled safety and reliability are achieved through fail-safe status LED's, thermal fuse protection for over-voltage, and Brooks' patented dead-front safety shield.



SAFETY



SECURITY

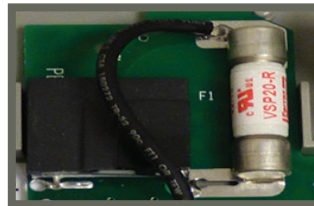
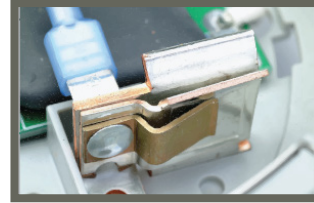
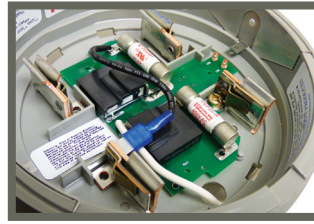
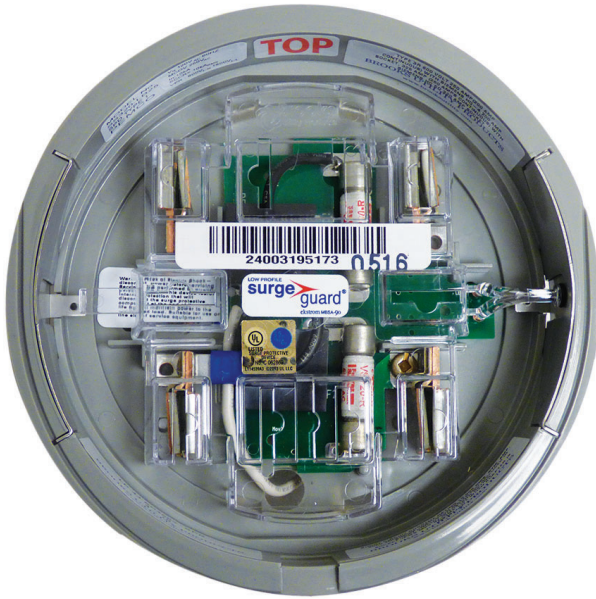


RELIABILITY

MODELS

MBSA-4J-180 - 4 JAWS, 120/240V

MBSA-5J-180 - 5 JAWS, 120/240V



SURGE SUPPRESSION BOARD

Dual fail-safe MOV's tested to 45 kA provide superior first-line residential surge protection.

260A RATED JAWS

Robust jaw and conductor design makes this the only MBSA suitable for use on 200A and 320A meter sockets.

THERMAL DISCONNECT / CURRENT FUSE LINKS

A special thermal disconnect plus current limiting fuses for each MOV protects against both thermal and current overload conditions.

SPECIFICATIONS

Operation:

Voltage System - 120/240 Vrms 1ph 3W+G
 Max Continuous Operating Voltage (MCOV) - 250 Vrms
 Input Frequency - 50/60 Hz
 Earth Leakage Current - <2mA
 Neutral Connection - Flying Lead, 5th Jaw

Protection:

Protection modes: L1-N, L2-N
 Max Tested Surge Current L1-N - 45kA 8/20 μ s
 Max Tested Surge Current L2-N - 45kA 8/20 μ s
 SPD Circuit Description - High energy MOV
 Abnormal Overvoltage Isolation - Thermal Disconnects & Fusing
 Max Fault Current Rating - 10kAIC

Performance:

SVR (UL 1449) - 800V
 Cat. C1 - 3kA, 8/20 μ s - <900V
 Cat. C3 - 10kA, 8/20 μ s - <1200V

Physical Data:

Dimensions - 1.25" x8.73" OD (32x222mm) approx. fitted
 Weight - 1.5 lb approx.
 Enclosure Material - Flame retardant polycarbonate
 Mounting Method - Low Profile/Plugs directly into meter base
 Environmental Rating - NEMA-3R
 Operating Temperature - -4 to +176°F (-20 to +80°C)
 Humidity - 0 - 90%
 Altitude - 0 - 12,000 ft (0 - 3,650m)
 Product Warranty - 15 years

Listing & Test Standards:

UL Listed - Type 1 SPD UL1449
 UL Listed - UL 414SA Meter Socket Adapter
 Surge Rated for Compliance - ANSI/IEEE C62.41-1991
 Cat A, Cat B, & Cat C

Alarms and Indicators:

Operational Status Indication - Fail-safe LED