

Si usted no entiende la etiqueta, busque a alguien para que se la explique a usted en detalle.
(If you do not understand the label, find someone to explain it to you in detail.)

For MEDICAL and TRANSPORTATION Emergencies ONLY Call 24 Hours A Day 1-800-334-7577
For PRODUCT USE Information Call 1-800-331-2867

FIRST AID	
If in eyes:	<ul style="list-style-type: none"> • Hold eye open and rinse slowly and gently with water for 15 to 20 minutes. Remove contact lenses, if present, after the first 5 minutes, then continue rinsing eye. • Call a poison control center or doctor for treatment advice.
If on skin or clothing:	<ul style="list-style-type: none"> • Take off contaminated clothing. • Rinse skin immediately with plenty of water for 15-20 minutes. • Call a poison control center or doctor for treatment advice.
If swallowed:	<ul style="list-style-type: none"> • Immediately call a poison control center or doctor for treatment advice. • Do not induce vomiting unless told to do so by a poison control center or doctor. • Have person sip a glass of water if able to swallow. • Do not give anything by mouth to an unconscious person.
<p>For MEDICAL Emergencies Call 24 Hours A Day 1-800-334-7577. Have the product container or label with you when calling a poison control center or doctor or going for treatment.</p>	

PRECAUTIONARY STATEMENTS
HAZARD TO HUMANS AND DOMESTIC ANIMALS
CAUTION

Harmful if swallowed or absorbed through skin. Causes moderate eye irritation. Avoid contact with skin, eyes, or on clothing. Wash thoroughly with soap and

water after handling and before eating, drinking, chewing gum, using tobacco, or using the toilet. Remove and wash contaminated clothing before reuse.

PERSONAL PROTECTIVE EQUIPMENT (PPE)

All mixers, loaders, applicators and other handlers must wear:

- Long-sleeved shirt and long pants
- Shoes plus socks
- Waterproof gloves

USER SAFETY RECOMMENDATIONS

Users should:

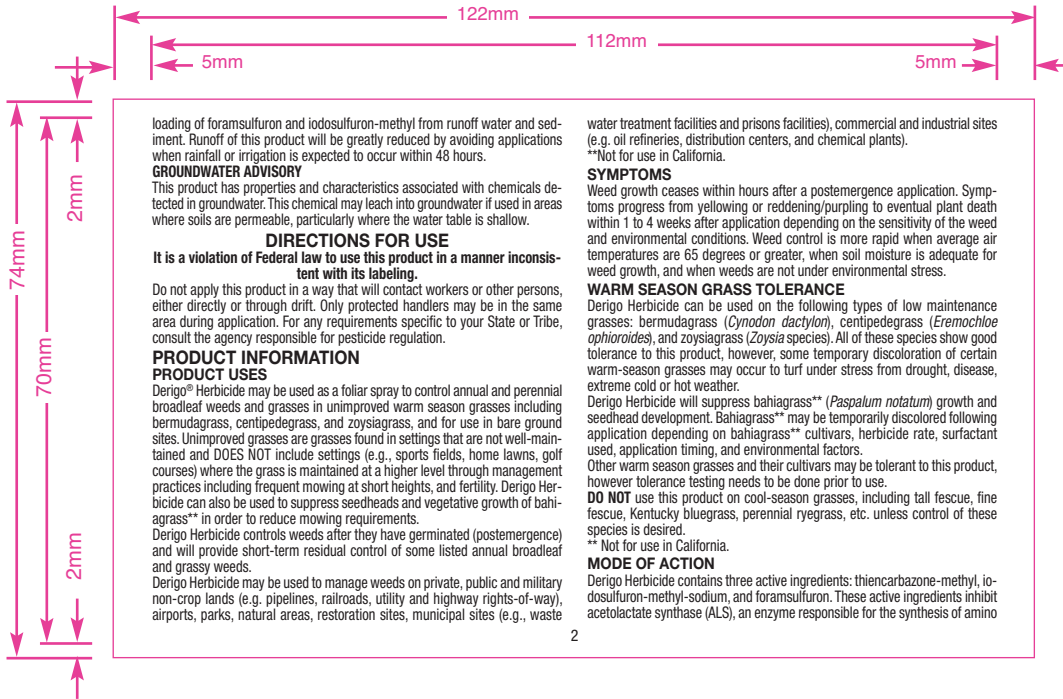
- Remove clothing/PPE immediately if pesticide gets inside. Then wash thoroughly and put on clean clothing.
- Remove PPE immediately after handling this product. Wash the outside of gloves before removing. As soon as possible, wash thoroughly and change into clean clothing.

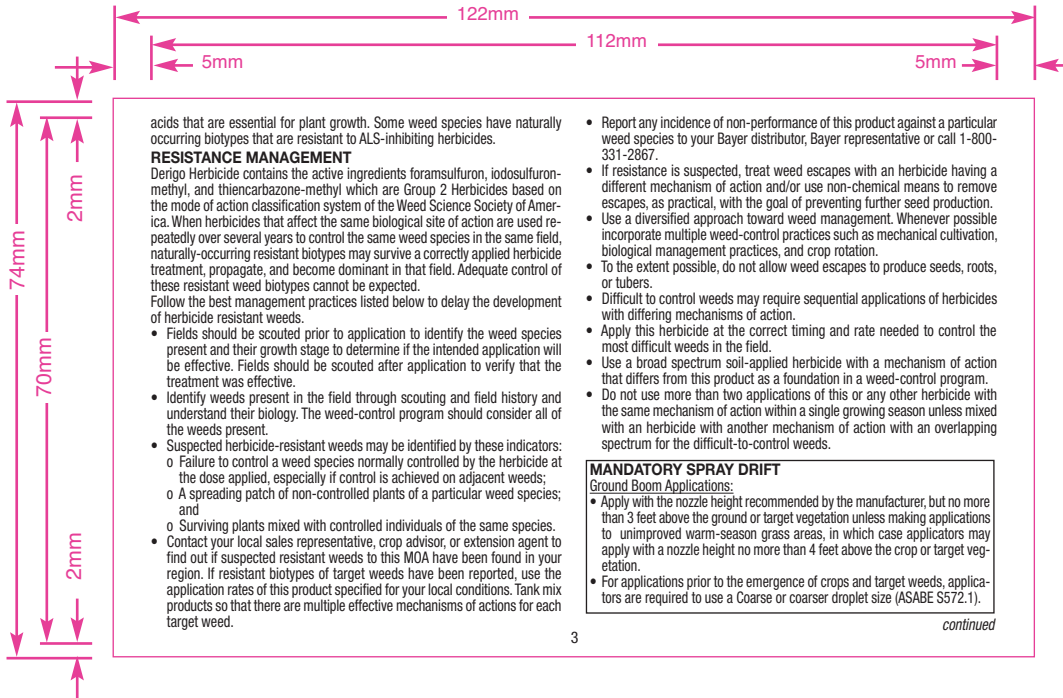
ENVIRONMENTAL HAZARDS

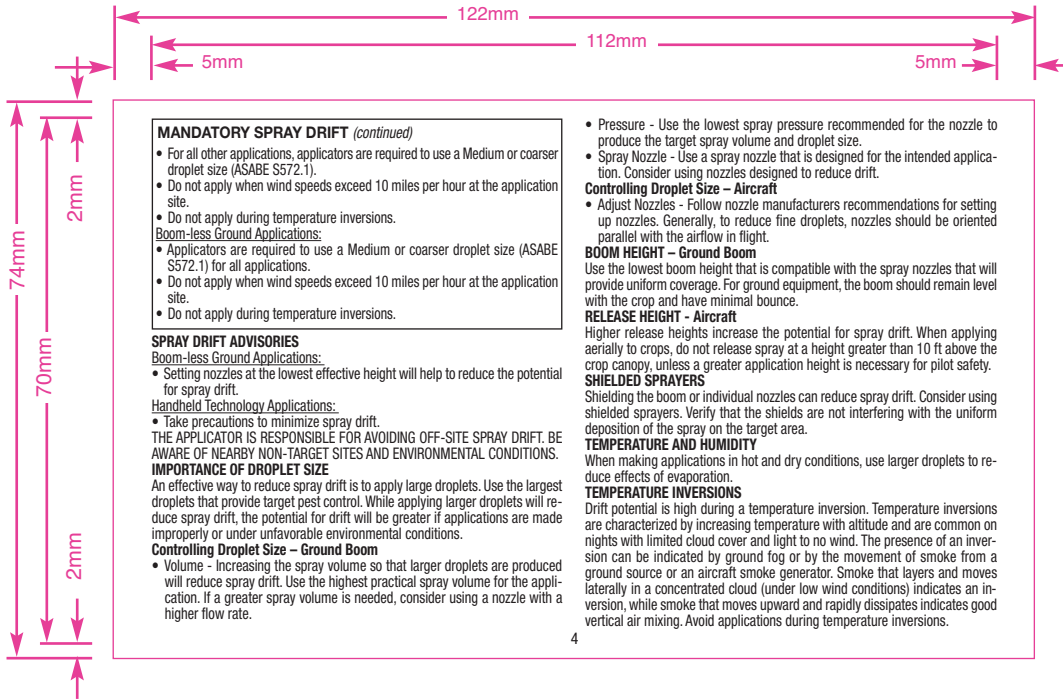
This product is toxic to non-target plants. Non-target plants may be adversely affected if the product is allowed to drift from the areas of application. Avoid spray drift from treated area. Do not apply when conditions favor drift from treated areas. Do not apply directly to water, to areas where surface water is present or to intertidal areas below the mean high water mark. Do not contaminate water when cleaning equipment or disposing of equipment washwaters or rinsate. Do not drain or rinse equipment near desirable vegetation. Refer to the Spray Drift Management section of this label for additional information.

SURFACE WATER ADVISORY

This product may impact surface water quality due to runoff of rain water. This is especially true for poorly draining soils and soils with shallow ground water. This product is classified as having high potential for reaching surface water via runoff for weeks or more after application. A level, well-maintained vegetative buffer strip between areas to which this product is applied and surface water features including ponds, streams, and springs will reduce the potential







MANDATORY SPRAY DRIFT *(continued)*

- For all other applications, applicators are required to use a Medium or coarser droplet size (ASABE S572.1).
- Do not apply when wind speeds exceed 10 miles per hour at the application site.
- Do not apply during temperature inversions.

Boom-less Ground Applications:

- Applicators are required to use a Medium or coarser droplet size (ASABE S572.1) for all applications.
- Do not apply when wind speeds exceed 10 miles per hour at the application site.
- Do not apply during temperature inversions.

SPRAY DRIFT ADVISORIES

Boom-less Ground Applications:

- Setting nozzles at the lowest effective height will help to reduce the potential for spray drift.

Handheld Technology Applications:

- Take precautions to minimize spray drift.

THE APPLICATOR IS RESPONSIBLE FOR AVOIDING OFF-SITE SPRAY DRIFT. BE AWARE OF NEARBY NON-TARGET SITES AND ENVIRONMENTAL CONDITIONS.

IMPORTANCE OF DROPLET SIZE

An effective way to reduce spray drift is to apply large droplets. Use the largest droplets that provide target pest control. While applying larger droplets will reduce spray drift, the potential for drift will be greater if applications are made improperly or under unfavorable environmental conditions.

Controlling Droplet Size – Ground Boom

- Volume - Increasing the spray volume so that larger droplets are produced will reduce spray drift. Use the highest practical spray volume for the application. If a greater spray volume is needed, consider using a nozzle with a higher flow rate.

- Pressure - Use the lowest spray pressure recommended for the nozzle to produce the target spray volume and droplet size.
- Spray Nozzle - Use a spray nozzle that is designed for the intended application. Consider using nozzles designed to reduce drift.

Controlling Droplet Size – Aircraft

- Adjust Nozzles - Follow nozzle manufacturers recommendations for setting up nozzles. Generally, to reduce fine droplets, nozzles should be oriented parallel with the airflow in flight.

BOOM HEIGHT – Ground Boom

Use the lowest boom height that is compatible with the spray nozzles that will provide uniform coverage. For ground equipment, the boom should remain level with the crop and have minimal bounce.

RELEASE HEIGHT - Aircraft

Higher release heights increase the potential for spray drift. When applying aerially to crops, do not release spray at a height greater than 10 ft above the crop canopy, unless a greater application height is necessary for pilot safety.

SHIELDED SPRAYERS

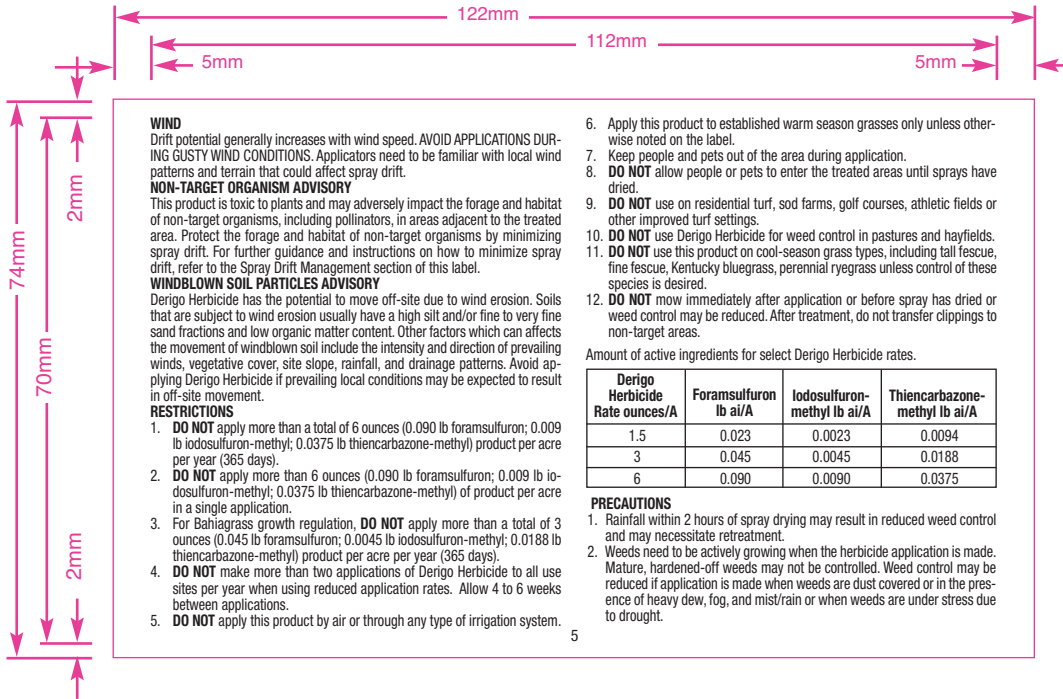
Shielding the boom or individual nozzles can reduce spray drift. Consider using shielded sprayers. Verify that the shields are not interfering with the uniform deposition of the spray on the target area.

TEMPERATURE AND HUMIDITY

When making applications in hot and dry conditions, use larger droplets to reduce effects of evaporation.

TEMPERATURE INVERSIONS

Drift potential is high during a temperature inversion. Temperature inversions are characterized by increasing temperature with altitude and are common on nights with limited cloud cover and light to no wind. The presence of an inversion can be indicated by ground fog or by the movement of smoke from a ground source or an aircraft smoke generator. Smoke that layers and moves laterally in a concentrated cloud (under low wind conditions) indicates an inversion, while smoke that moves upward and rapidly dissipates indicates good vertical air mixing. Avoid applications during temperature inversions.



WIND

Drift potential generally increases with wind speed. AVOID APPLICATIONS DURING GUSTY WIND CONDITIONS. Applicators need to be familiar with local wind patterns and terrain that could affect spray drift.

NON-TARGET ORGANISM ADVISORY

This product is toxic to plants and may adversely impact the forage and habitat of non-target organisms, including pollinators, in areas adjacent to the treated area. Protect the forage and habitat of non-target organisms by minimizing spray drift. For further guidance and instructions on how to minimize spray drift, refer to the Spray Drift Management section of this label.

WINDBLOWN SOIL PARTICLES ADVISORY

Derigo Herbicide has the potential to move off-site due to wind erosion. Soils that are subject to wind erosion usually have a high silt and/or fine to very fine sand fractions and low organic matter content. Other factors which can affect the movement of windblown soil include the intensity and direction of prevailing winds, vegetative cover, site slope, rainfall, and drainage patterns. Avoid applying Derigo Herbicide if prevailing local conditions may be expected to result in off-site movement.

RESTRICTIONS

1. **DO NOT** apply more than a total of 6 ounces (0.090 lb foramsulfuron; 0.009 lb iodoflurofen-methyl; 0.0375 lb thiencazuron-methyl) product per acre per year (365 days).
2. **DO NOT** apply more than 6 ounces (0.090 lb foramsulfuron; 0.009 lb iodoflurofen-methyl; 0.0375 lb thiencazuron-methyl) of product per acre in a single application.
3. For Bahiagrass growth regulation, **DO NOT** apply more than a total of 3 ounces (0.045 lb foramsulfuron; 0.0045 lb iodoflurofen-methyl; 0.0188 lb thiencazuron-methyl) product per acre per year (365 days).
4. **DO NOT** make more than two applications of Derigo Herbicide to all use sites per year when using reduced application rates. Allow 4 to 6 weeks between applications.
5. **DO NOT** apply this product by air or through any type of irrigation system.

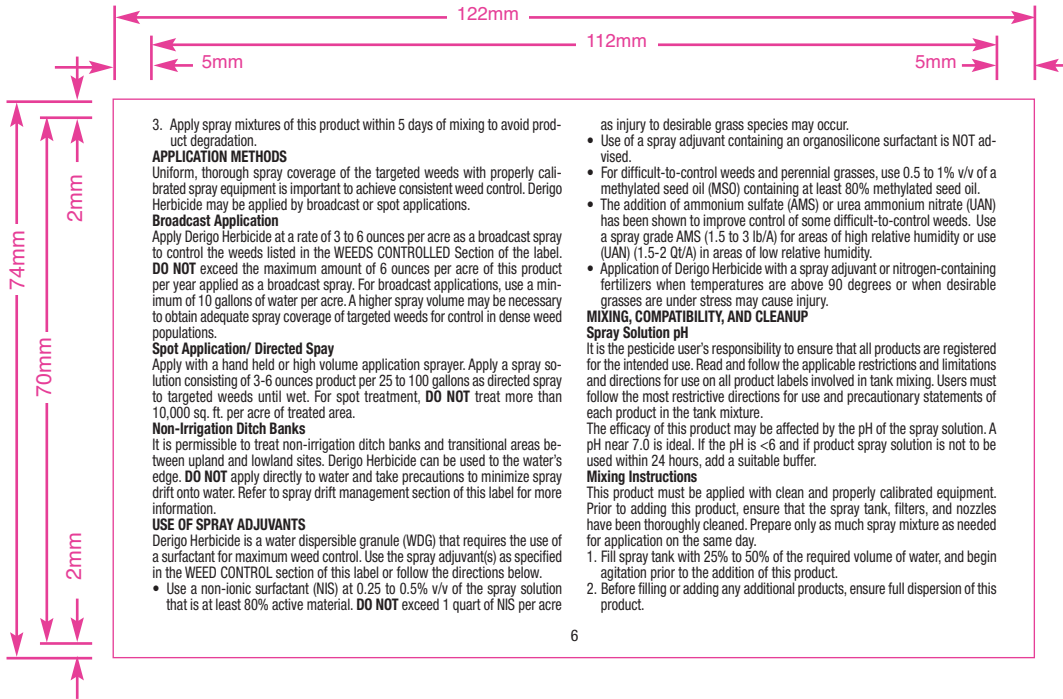
6. Apply this product to established warm season grasses only unless otherwise noted on the label.
7. Keep people and pets out of the area during application.
8. **DO NOT** allow people or pets to enter the treated areas until sprays have dried.
9. **DO NOT** use on residential turf, sod farms, golf courses, athletic fields or other improved turf settings.
10. **DO NOT** use Derigo Herbicide for weed control in pastures and hayfields.
11. **DO NOT** use this product on cool-season grass types, including tall fescue, fine fescue, Kentucky bluegrass, perennial ryegrass unless control of these species is desired.
12. **DO NOT** mow immediately after application or before spray has dried or weed control may be reduced. After treatment, do not transfer clippings to non-target areas.

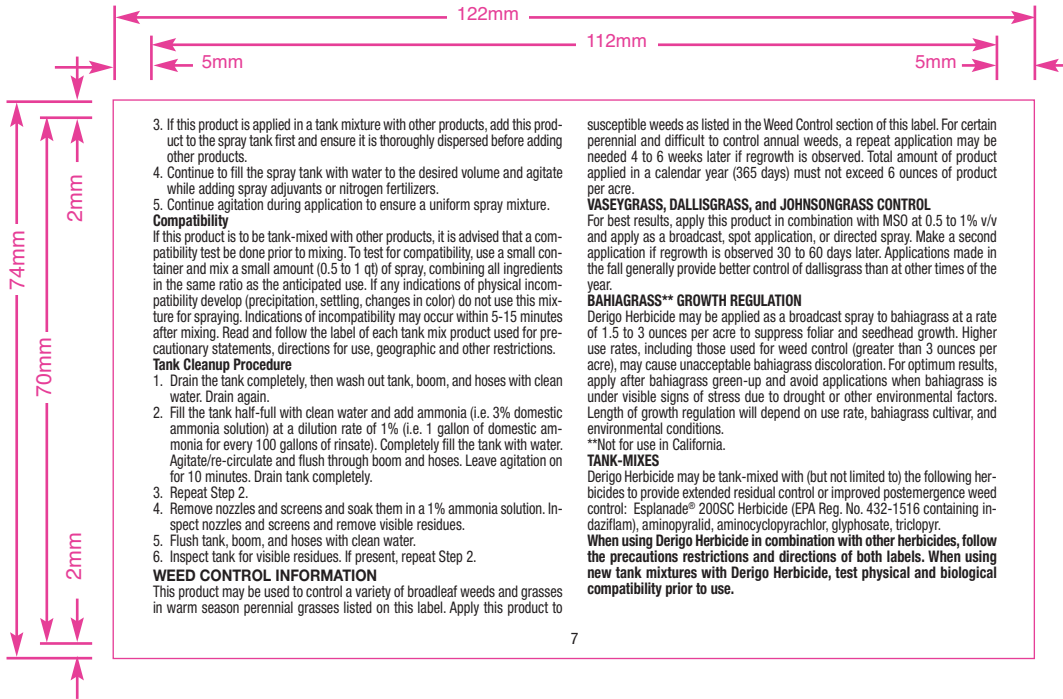
Amount of active ingredients for select Derigo Herbicide rates.

Derigo Herbicide Rate ounces/A	Foramsulfuron lb ai/A	Iodoflurofen-methyl lb ai/A	Thiencazuron-methyl lb ai/A
1.5	0.023	0.0023	0.0094
3	0.045	0.0045	0.0188
6	0.090	0.0090	0.0375

PRECAUTIONS

1. Rainfall within 2 hours of spray drying may result in reduced weed control and may necessitate retreatment.
2. Weeds need to be actively growing when the herbicide application is made. Mature, hardened-off weeds may not be controlled. Weed control may be reduced if application is made when weeds are dust covered or in the presence of heavy dew, fog, and mist/rain or when weeds are under stress due to drought.





- If this product is applied in a tank mixture with other products, add this product to the spray tank first and ensure it is thoroughly dispersed before adding other products.
- Continue to fill the spray tank with water to the desired volume and agitate while adding spray adjuvants or nitrogen fertilizers.
- Continue agitation during application to ensure a uniform spray mixture.

Compatibility

If this product is to be tank-mixed with other products, it is advised that a compatibility test be done prior to mixing. To test for compatibility, use a small container and mix a small amount (0.5 to 1 qt) of spray, combining all ingredients in the same ratio as the anticipated use. If any indications of physical incompatibility develop (precipitation, settling, changes in color) do not use this mixture for spraying. Indications of incompatibility may occur within 5-15 minutes after mixing. Read and follow the label of each tank mix product used for precautionary statements, directions for use, geographic and other restrictions.

Tank Cleanup Procedure

- Drain the tank completely, then wash out tank, boom, and hoses with clean water. Drain again.
- Fill the tank half-full with clean water and add ammonia (i.e. 3% domestic ammonia solution) at a dilution rate of 1% (i.e. 1 gallon of domestic ammonia for every 100 gallons of rinsate). Completely fill the tank with water. Agitate/re-circulate and flush through boom and hoses. Leave agitation on for 10 minutes. Drain tank completely.
- Repeat Step 2.
- Remove nozzles and screens and soak them in a 1% ammonia solution. Inspect nozzles and screens and remove visible residues.
- Flush tank, boom, and hoses with clean water.
- Inspect tank for visible residues. If present, repeat Step 2.

WEED CONTROL INFORMATION

This product may be used to control a variety of broadleaf weeds and grasses in warm season perennial grasses listed on this label. Apply this product to

susceptible weeds as listed in the Weed Control section of this label. For certain perennial and difficult to control annual weeds, a repeat application may be needed 4 to 6 weeks later if regrowth is observed. Total amount of product applied in a calendar year (365 days) must not exceed 6 ounces of product per acre.

VASEYGRASS, DALLISGRASS, and JOHNSONGRASS CONTROL

For best results, apply this product in combination with MSO at 0.5 to 1% v/v and apply as a broadcast, spot application, or directed spray. Make a second application if regrowth is observed 30 to 60 days later. Applications made in the fall generally provide better control of dallisgrass than at other times of the year.

BAHIAGRASS GROWTH REGULATION**

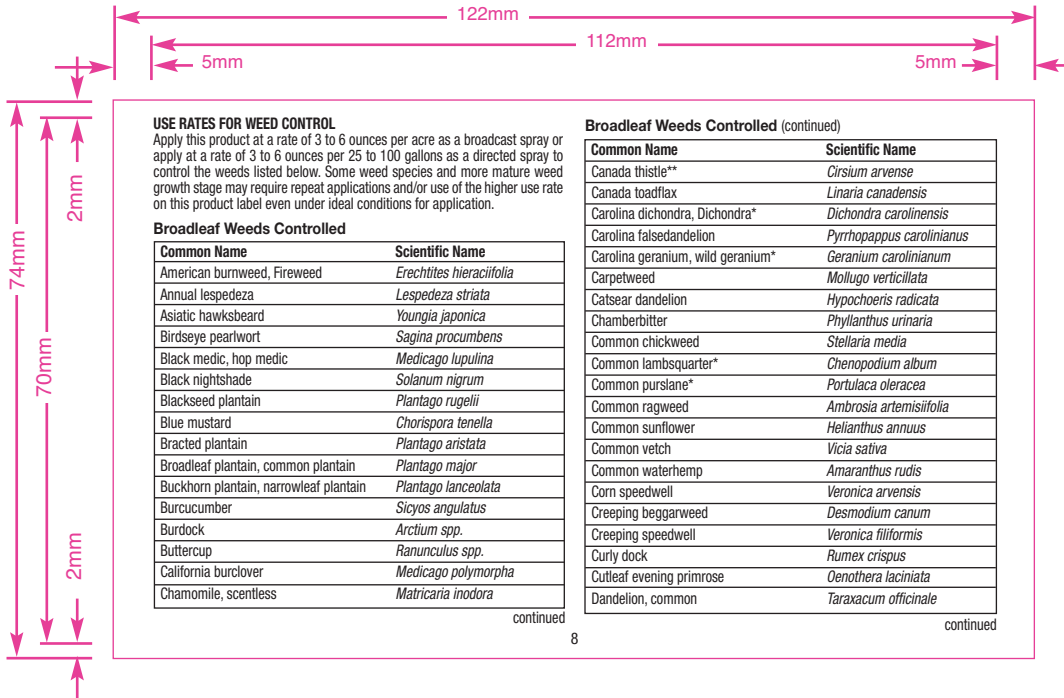
Derigo Herbicide may be applied as a broadcast spray to bahiagrass at a rate of 1.5 to 3 ounces per acre to suppress foliar and seedhead growth. Higher use rates, including those used for weed control (greater than 3 ounces per acre), may cause unacceptable bahiagrass discoloration. For optimum results, apply after bahiagrass green-up and avoid applications when bahiagrass is under visible signs of stress due to drought or other environmental factors. Length of growth regulation will depend on use rate, bahiagrass cultivar, and environmental conditions.

**Not for use in California.

TANK-MIXES

Derigo Herbicide may be tank-mixed with (but not limited to) the following herbicides to provide extended residual control or improved postemergence weed control: Esplanade® 200SC Herbicide (EPA Reg. No. 432-1516 containing indaziflam), aminopyralid, aminocyclopyrachlor, glyphosate, triclopyr.

When using Derigo Herbicide in combination with other herbicides, follow the precautions restrictions and directions of both labels. When using new tank mixtures with Derigo Herbicide, test physical and biological compatibility prior to use.



USE RATES FOR WEED CONTROL

Apply this product at a rate of 3 to 6 ounces per acre as a broadcast spray or apply at a rate of 3 to 6 ounces per 25 to 100 gallons as a directed spray to control the weeds listed below. Some weed species and more mature weed growth stage may require repeat applications and/or use of the higher use rate on this product label even under ideal conditions for application.

Broadleaf Weeds Controlled

Common Name	Scientific Name
American burnweed, Fireweed	<i>Erechtites hieraciifolia</i>
Annual lespedeza	<i>Lepedeza striata</i>
Asiatic hawksbeard	<i>Youngia japonica</i>
Birdseye pearlwort	<i>Sagina procumbens</i>
Black medic, hop medic	<i>Medicago lupulina</i>
Black nightshade	<i>Solanum nigrum</i>
Blackseed plantain	<i>Plantago rugelii</i>
Blue mustard	<i>Chorispora tenella</i>
Bracted plantain	<i>Plantago aristata</i>
Broadleaf plantain, common plantain	<i>Plantago major</i>
Buckhorn plantain, narrowleaf plantain	<i>Plantago lanceolata</i>
Burcucumber	<i>Sicyos angulatus</i>
Burdock	<i>Arctium spp.</i>
Buttercup	<i>Ranunculus spp.</i>
California burclover	<i>Medicago polymorpha</i>
Chamomile, scentless	<i>Matricaria inodora</i>

continued

Broadleaf Weeds Controlled (continued)

Common Name	Scientific Name
Canada thistle**	<i>Cirsium arvense</i>
Canada toadflax	<i>Linaria canadensis</i>
Carolina dichondra, Dichondra*	<i>Dichondra carolinensis</i>
Carolina falsedandelion	<i>Pyrrhopappus carolinianus</i>
Carolina geranium, wild geranium*	<i>Geranium carolinianum</i>
Carpetweed	<i>Mollugo verticillata</i>
Catsear dandelion	<i>Hypochoeris radicata</i>
Chamberbitter	<i>Phyllanthus urinaria</i>
Common chickweed	<i>Stellaria media</i>
Common lambsquarter*	<i>Chenopodium album</i>
Common purslane*	<i>Portulaca oleracea</i>
Common ragweed	<i>Ambrosia artemisiifolia</i>
Common sunflower	<i>Helianthus annuus</i>
Common vetch	<i>Vicia sativa</i>
Common waterhemp	<i>Amaranthus rudis</i>
Corn speedwell	<i>Veronica arvensis</i>
Creeping beggarweed	<i>Desmodium canum</i>
Creeping speedwell	<i>Veronica filiformis</i>
Curly dock	<i>Rumex crispus</i>
Cutleaf evening primrose	<i>Oenothera laciniata</i>
Dandelion, common	<i>Taraxacum officinale</i>

continued

122mm

112mm

5mm

5mm

2mm

74mm

70mm

2mm

Broadleaf Weeds Controlled (continued)

Common Name	Scientific Name
Dogfennel	<i>Eupatorium capillifolium</i>
Dollarweed, Pennywort*	<i>Hydrocotyle spp.</i>
Eastern black nightshade	<i>Solanum ptychanthum</i>
Entireleaf morningglory	<i>Ipomoea hederacea</i> var. <i>integriuscula</i>
Facelis, trampweed	<i>Facelis retusa</i>
Field madder	<i>Sherardia arvensis</i>
Field pansy, Johnny jump-up*	<i>Viola rafinesquii/bicolor</i>
Field pepperweed	<i>Lepidium campestre</i>
Field pennycress	<i>Thlaspi arvense</i>
Field violet, wild pansy	<i>Viola arvensis</i>
Fleabane	<i>Erigeron spp</i>
Florida betony	<i>Stachys floridana</i>
Florida pusley	<i>Richardia scabra</i>
Giant ragweed	<i>Ambrosia trifida</i>
Ground ivy	<i>Glechoma hederacea</i>
Hairy bittercress	<i>Cardamine hirsuta</i>
Hairy nightshade	<i>Solanum villosum</i>
Heartwing sorrel	<i>Rumex hastatulus</i>
Heath aster*	<i>Aster ericoides</i>
Hemp sesbania	<i>Sesbania exaltata</i>

continued

Broadleaf Weeds Controlled (continued)

Common Name	Scientific Name
Hempnettle	<i>Galeopsis spp.</i>
Henbit	<i>Lamium amplexicaule</i>
Hop clovers	<i>Trifolium spp.</i>
Horsenettle	<i>Solanum carolinense</i>
Horse purslane	<i>Trianthema portulacastrum</i>
Horseweed (maretail)**	<i>Conyza canadensis</i>
Ivyleaf morningglory	<i>Ipomoea hederacea</i>
Khakiweed*	<i>Alternanthera caracasana</i>
Knawel	<i>Scleranthus annuus</i>
Lady's Mantle	<i>Alchemilla mollis</i>
Lawn burweed, spurweed	<i>Soliva sessilis</i>
Mouse-ear chickweed	<i>Cerastium glomeratum</i>
Oxeye daisy	<i>Leucanthemum vulgare</i>
Paleseed plantain	<i>Plantago virginica</i>
Palmer amaranth	<i>Amaranth palmeri</i>
Parsley piert	<i>Aphanes microcarpa</i>
Pennsylvania smartweed**	<i>Polygonum pennsylvanicum</i>
Pitted morningglory	<i>Ipomoea lacunosa</i>
Poison hemlock	<i>Corium maculatum</i>
Pokeweed, common	<i>Phytolacca americana</i>
Poorjoe*	<i>Diodia teres</i>

continued

9

Broadleaf Weeds Controlled (continued)

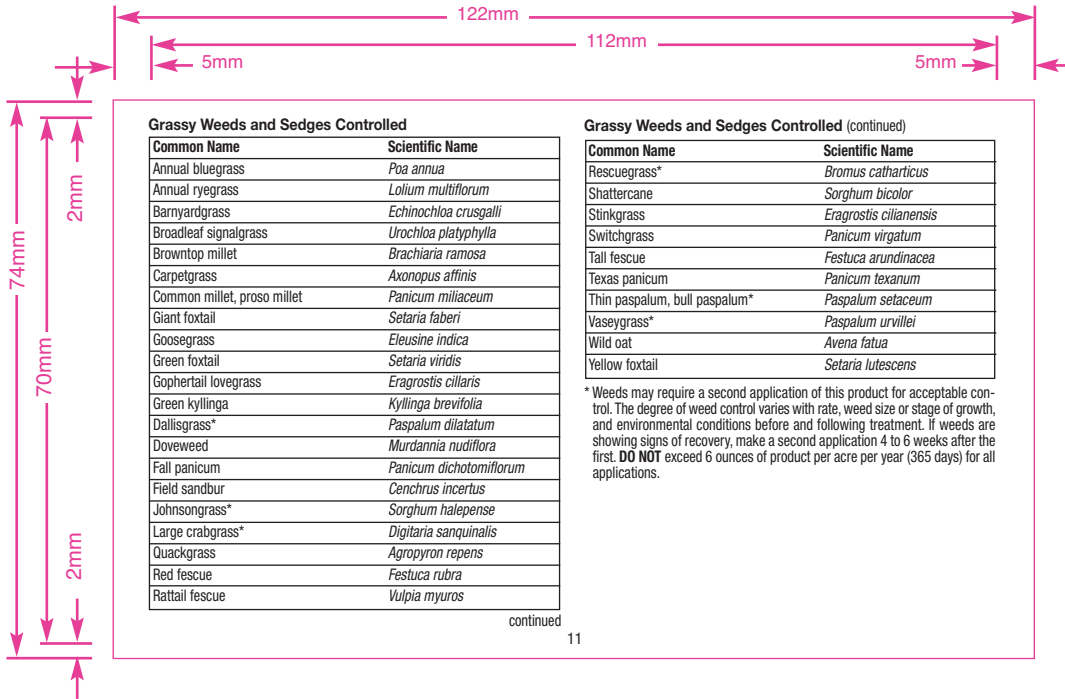
Common Name	Scientific Name
Prickly sida*	<i>Sida spinosa</i>
Prostrate knotweed	<i>Polygonum aviculare</i>
Prostrate spurge	<i>Chamaesyce maculata</i>
Purple cudweed	<i>Gnaphalium purpureum</i>
Purple deadnettle	<i>Lamium purpureum</i>
Rabbitfoot clover	<i>Trifolium arvense</i>
Red sorrel	<i>Rumex acetosella</i>
Redroot pigweed	<i>Amaranth retroflexus</i>
Russian thistle	<i>Salsola tragus</i>
Shepherd's purse	<i>Capsella bursa-pastoris</i>
Sicklepod	<i>Senna obtusifolia</i>
Slender aster	<i>Aster gracillis</i>
Southern brassbuttons	<i>Cotula australis</i>
Spiny sowthistle	<i>Sonchus asper</i>
Sprawling horseweed	<i>Calyptocarpus vialis</i>
Swinecress	<i>Coronopus didymus</i>
Tansy mustard	<i>Descurainia pinnata</i>
Turnipweed	<i>Rapistrum rugosum</i>
Velvetleaf	<i>Abutilon theophrasti</i>
Venus looking-glass	<i>Triodanis perfoliata</i>
Virginia buttonweed*	<i>Diodia virginiana</i>

continued

Broadleaf Weeds Controlled (continued)

Common Name	Scientific Name
Virginia dwarf dandelion	<i>Krigia virginica</i>
Western ragweed	<i>Ambrosia psilostachya</i>
White clover	<i>Trifolium repens</i>
White mustard	<i>Brassica alba</i>
White sweet clover	<i>Melilotus alba</i>
Whiteleaf sage	<i>Salvia leucophylla</i>
Wild buckwheat	<i>Polygonum convolvulus</i>
Wild carrot	<i>Daucus carota</i>
Wild garlic	<i>Allium vineale</i>
Wild lettuce	<i>Lactuca canadensis</i>
Wild mustard	<i>Brassica kaber</i>
Wild onion	<i>Allium canadense</i>
Wild parsley	<i>Lomatium foeniculaceum</i>
Wild radish	<i>Raphanus raphanistrum</i>
Yellow rocket	<i>Barbarea vulgaris</i>
Yellow woodsorrel, Oxalis*	<i>Oxalis stricta</i>

**Not for use in California.



Grassy Weeds and Sedges Controlled

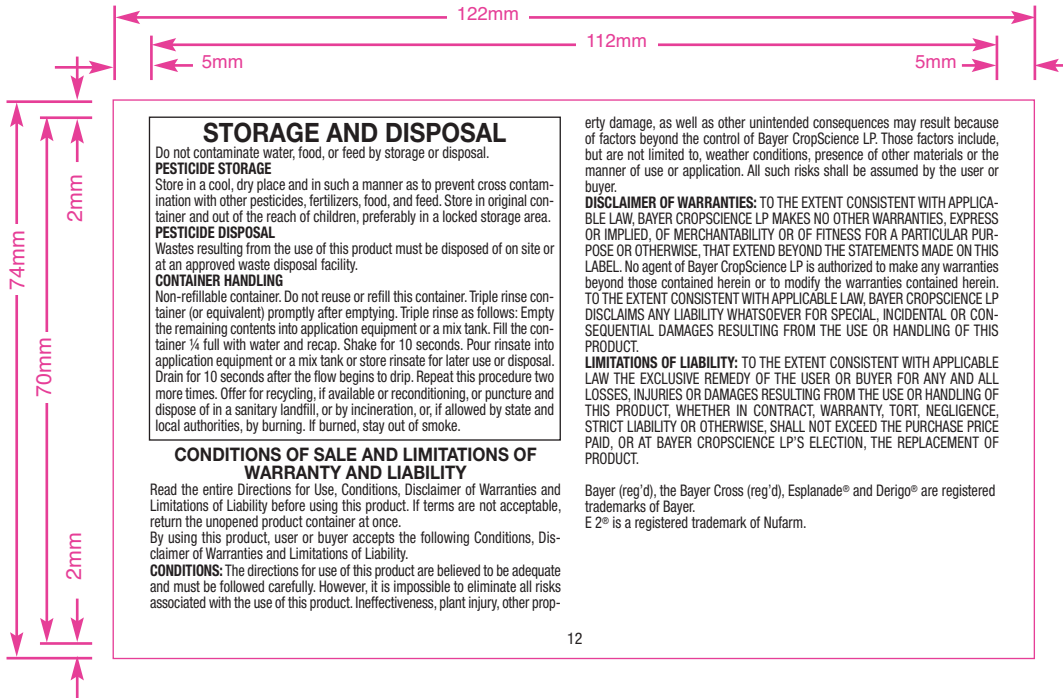
Common Name	Scientific Name
Annual bluegrass	<i>Poa annua</i>
Annual ryegrass	<i>Lolium multiflorum</i>
Barnyardgrass	<i>Echinochloa crusgalli</i>
Broadleaf signalgrass	<i>Urochloa platyphylla</i>
Browntop millet	<i>Brachiaria ramosa</i>
Carpetgrass	<i>Axonopus affinis</i>
Common millet, proso millet	<i>Panicum miliaceum</i>
Giant foxtail	<i>Setaria faberi</i>
Goosegrass	<i>Eleusine indica</i>
Green foxtail	<i>Setaria viridis</i>
Gophertail lovegrass	<i>Eragrostis ciliaris</i>
Green kyllinga	<i>Kyllinga brevifolia</i>
Dallisgrass*	<i>Paspalum dilatatum</i>
Doveweed	<i>Murdannia nudiflora</i>
Fall panicum	<i>Panicum dichotomiflorum</i>
Field sandbur	<i>Cenchrus incertus</i>
Johnsongrass*	<i>Sorghum halepense</i>
Large crabgrass*	<i>Digitaria sanguinalis</i>
Quackgrass	<i>Agropyron repens</i>
Red fescue	<i>Festuca rubra</i>
Rattail fescue	<i>Vulpia myuros</i>

continued

Grassy Weeds and Sedges Controlled (continued)

Common Name	Scientific Name
Rescuegrass*	<i>Bromus catharticus</i>
Shattercane	<i>Sorghum bicolor</i>
Stinkgrass	<i>Eragrostis cilianensis</i>
Switchgrass	<i>Panicum virgatum</i>
Tall fescue	<i>Festuca arundinacea</i>
Texas panicum	<i>Panicum texanum</i>
Thin paspalum, bull paspalum*	<i>Paspalum setaceum</i>
Vaseygrass*	<i>Paspalum urvillei</i>
Wild oat	<i>Avena fatua</i>
Yellow foxtail	<i>Setaria lutescens</i>

* Weeds may require a second application of this product for acceptable control. The degree of weed control varies with rate, weed size or stage of growth, and environmental conditions before and following treatment. If weeds are showing signs of recovery, make a second application 4 to 6 weeks after the first. **DO NOT** exceed 6 ounces of product per acre per year (365 days) for all applications.



STORAGE AND DISPOSAL

Do not contaminate water, food, or feed by storage or disposal.

PESTICIDE STORAGE

Store in a cool, dry place and in such a manner as to prevent cross contamination with other pesticides, fertilizers, food, and feed. Store in original container and out of the reach of children, preferably in a locked storage area.

PESTICIDE DISPOSAL

Wastes resulting from the use of this product must be disposed of on site or at an approved waste disposal facility.

CONTAINER HANDLING

Non-refillable container. Do not reuse or refill this container. Triple rinse container (or equivalent) promptly after emptying. Triple rinse as follows: Empty the remaining contents into application equipment or a mix tank. Fill the container ¼ full with water and recap. Shake for 10 seconds. Pour rinsate into application equipment or a mix tank or store rinsate for later use or disposal. Drain for 10 seconds after the flow begins to drip. Repeat this procedure two more times. Offer for recycling, if available or reconditioning, or puncture and dispose of in a sanitary landfill, or by incineration, or, if allowed by state and local authorities, by burning. If burned, stay out of smoke.

CONDITIONS OF SALE AND LIMITATIONS OF WARRANTY AND LIABILITY

Read the entire Directions for Use, Conditions, Disclaimer of Warranties and Limitations of Liability before using this product. If terms are not acceptable, return the unopened product container at once.

By using this product, user or buyer accepts the following Conditions, Disclaimer of Warranties and Limitations of Liability.

CONDITIONS: The directions for use of this product are believed to be adequate and must be followed carefully. However, it is impossible to eliminate all risks associated with the use of this product. Ineffectiveness, plant injury, other prop-

erty damage, as well as other unintended consequences may result because of factors beyond the control of Bayer CropScience LP. Those factors include, but are not limited to, weather conditions, presence of other materials or the manner of use or application. All such risks shall be assumed by the user or buyer.

DISCLAIMER OF WARRANTIES: TO THE EXTENT CONSISTENT WITH APPLICABLE LAW, BAYER CROPSCIENCE LP MAKES NO OTHER WARRANTIES, EXPRESS OR IMPLIED, OF MERCHANTABILITY OR OF FITNESS FOR A PARTICULAR PURPOSE OR OTHERWISE, THAT EXTEND BEYOND THE STATEMENTS MADE ON THIS LABEL. No agent of Bayer CropScience LP is authorized to make any warranties beyond those contained herein or to modify the warranties contained herein. TO THE EXTENT CONSISTENT WITH APPLICABLE LAW, BAYER CROPSCIENCE LP DISCLAIMS ANY LIABILITY WHATSOEVER FOR SPECIAL, INCIDENTAL OR CONSEQUENTIAL DAMAGES RESULTING FROM THE USE OR HANDLING OF THIS PRODUCT.

LIMITATIONS OF LIABILITY: TO THE EXTENT CONSISTENT WITH APPLICABLE LAW THE EXCLUSIVE REMEDY OF THE USER OR BUYER FOR ANY AND ALL LOSSES, INJURIES OR DAMAGES RESULTING FROM THE USE OR HANDLING OF THIS PRODUCT, WHETHER IN CONTRACT, WARRANTY, TORT, NEGLIGENCE, STRICT LIABILITY OR OTHERWISE, SHALL NOT EXCEED THE PURCHASE PRICE PAID, OR AT BAYER CROPSCIENCE LP'S ELECTION, THE REPLACEMENT OF PRODUCT.

Bayer (reg'd), the Bayer Cross (reg'd), Esplanade® and Derigo® are registered trademarks of Bayer.

E 2® is a registered trademark of Nufarm.



Derigo® HERBICIDE

ACTIVE INGREDIENTS:

- Foramsulfuron (CAS Number 173159-57-4).....24.0%
- Iodosulfuron-methyl (CAS Number 144550-36-7).....2.4%
- Thiencarbazone-methyl (CAS Number 317815-83-1)10.0%
- OTHER INGREDIENTS:.....63.6%**

TOTAL:.....100.0%
 Derigo® Herbicide is formulated as a 36.4% water dispersible granule
 EPA Reg No. 432-1533 EPA Est. No. 000264-DEU-001

STOP - READ THE LABEL BEFORE USE
KEEP OUT OF REACH OF CHILDREN
CAUTION

Si usted no entiende la etiqueta, busque a alguien para que se la explique a usted en detalle.
 (If you do not understand the label, find someone to explain it to you in detail.)

See Panel for First Aid Instructions and Booklet for Complete
 Precautionary Statements and Directions for Use.

Net Contents:
60 Ounces
(1.7Kg)
81785031
8412719C 191204AV1

Produced for:
 Bayer Environmental Science
 A Division of Bayer CropScience LP
 5000 CentreGreen Way, Suite 400
 Cary, NC 27513
 Product of Germany

FORAMSULFURON & IODOSULFURON-METHYL & THIENCARBAZONE-METHYL	GROUP 2	HERBICIDE
--	----------------	------------------

For **MEDICAL** and **TRANSPORTATION** Emergencies **ONLY** Call
24 Hours A Day 1-800-334-7577
 For **PRODUCT USE** Information Call **1-800-331-2867**

FIRST AID	
If in eyes:	<ul style="list-style-type: none"> • Hold eye open and rinse slowly and gently with water for 15 to 20 minutes. Remove contact lenses, if present, after the first 5 minutes, then continue rinsing eye. • Call a poison control center or doctor for treatment advice.
If on skin or clothing:	<ul style="list-style-type: none"> • Take off contaminated clothing. • Rinse skin immediately with plenty of water for 15-20 minutes. • Call a poison control center or doctor for treatment advice.
If swallowed:	<ul style="list-style-type: none"> • Immediately call a poison control center or doctor for treatment advice. • Do not induce vomiting unless told to do so by a poison control center or doctor. • Have person sip a glass of water if able to swallow. • Do not give anything by mouth to an unconscious person.
<p>For MEDICAL Emergencies Call 24 Hours A Day 1-800-334-7577. Have the product container or label with you when calling a poison control center or doctor or going for treatment.</p>	

Bayer