

GUARANTEED ANALYSIS

Copper (Cu)5.1%
Plant nutrients derived from copper sulfate pentahydrate.
Contains 20.2% copper sulfate pentahydrate.

CONDITION OF SALE

The seller hereby represents and warrants that the fertilizers shall be manufactured and shipped to purchaser in a form suitable for application to plants, trees and other agricultural crops. Seller further warrants that the fertilizer product shall meet the guaranteed minimum analysis as set forth on the product label. However, this warranty does not extend to the use of the product contrary to label directions and the buyer assumes the risk of any such use.

CAUTION KEEP OUT OF REACH OF CHILDREN

Information regarding the contents and levels of metals in this product is available on the internet at: <http://www.aapfco.org/metals.htm>

WARNING: This product contains chemicals known to the State of California to cause cancer and birth defects or other reproductive harm.

CAUTION: Harmful if swallowed. Avoid contact with eyes, skin, and clothing. Avoid breathing spray mist.

DENSITY: 9.6 Lbs/Gallon (1.08 Kg/Liter)

Contents sold by weight not volume.

Manufactured By
GROW MORE®
15600 New Century Drive
Gardena, CA 90248
www.growmore.com

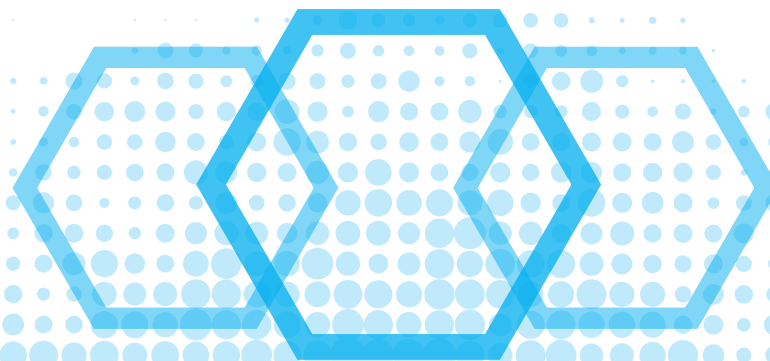


GROW  MORE®

NUTRA-ZORB COPPER

FOR FOLIAR APPLICATION

For Correction or Prevention of Copper Deficiency in
Agricultural Crops, Vegetable Crops, Turf, and Ornamentals



GENERAL INFORMATION

NUTRA-ZORB COPPER 5.1 is a proprietary blend of plant soluble copper and additives specifically formulated for foliar applied use to correct and prevent copper deficiency. It can be mixed with many liquid fertilizers, however DO NOT MIX WITH PHOSPHATE LIQUID FERTILIZERS. It is also not recommended for use with pesticides that are not compatible with acidic materials. NUTRA-ZORB COPPER 5.1 is environmentally safe, made with only "clean" raw materials free from heavy metal contamination.

DIRECTIONS FOR USE

NUTRA-ZORB COPPER 5.1 is compatible with most pesticides and can be applied by ground or aerial applications. Use sufficient water for thorough and uniform coverage of foliage. Mix in the following sequence: 1) 1/2 water, 2) NUTRA-ZORB COPPER 5.1, 3) pesticide/fertilizer if required, 4) remaining water. Continue agitation for at least 5 minutes. Always conduct a jar test with new tank mixes to verify compatibility. Apply on small test area to evaluate plant responses before large scale application.

RECOMMENDED RATES

The optimum rate and timing of applications will depend on local conditions and should always be made as a result of soil and/or plant tissue analysis in consultation with your local agricultural authorities. For foliar application apply no more than 16-32oz/100 gallons spray solution. Recommended for use on field crops, vegetable crops, fruits, nuts, ornamentals, and fresh cut flowers.

WHAT TO DO IN CASE OF CONTACT

If Ingested:	Give large amounts of water or milk, if conscious. Contact a physician immediately.
Eye Contact:	Flush eyes with clean water for 15 minutes. Seek medical attention immediately.
Skin Contact:	Remove contaminated clothing and wash skin with soap and water. Seek medical attention if irritation develops or persists.
If Inhaled:	Move to fresh air and seek medical attention if irritation develops or persists.

2.5 GALLONS (9.46 LITERS) NET WT. 24. LBS.