

2.5"

4.5"



# Tempo<sup>®</sup>

**1% DUST**

## INSECTICIDE

### Ready To Use

For Use Only By Pest Management Professionals and Commercial Applicators

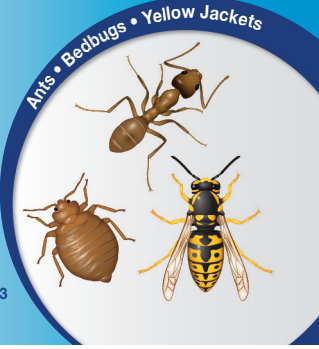
**Active Ingredient:**

Cyfluthrin, cyano(4-fluoro-3-phenoxyphenyl)-methyl 3-(2,2-dichloroethenyl)-2,2-dimethylcyclopropane-carboxylate.....	1%
<b>OTHER Ingredients:</b> .....	99%
<b>Total:</b> .....	100%

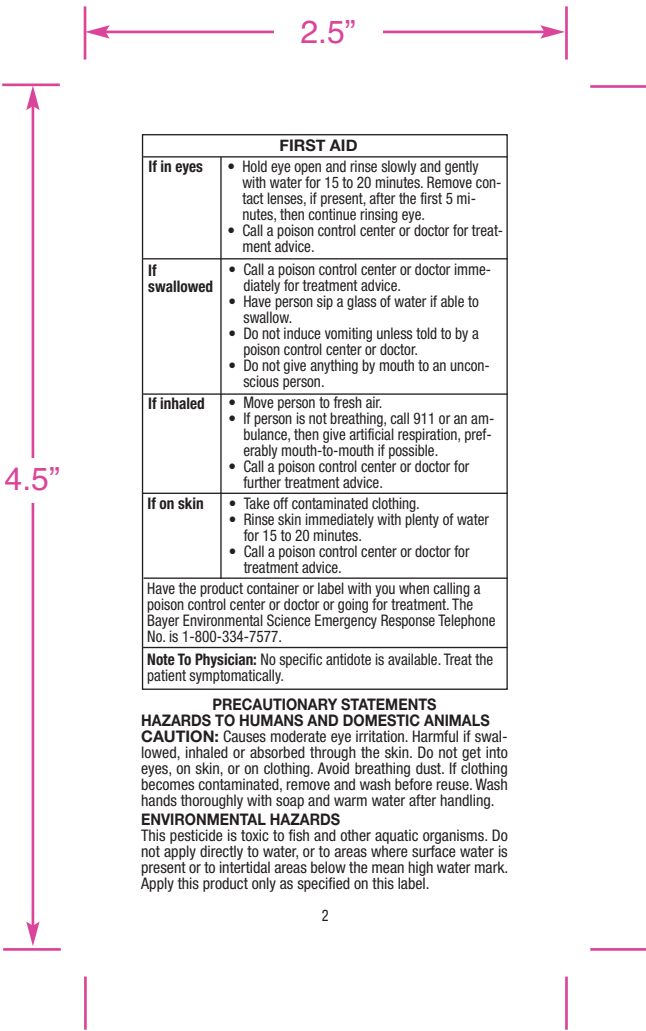
EPA Reg. No. 432-1373

**STOP - Read the label before use.**  
**KEEP OUT OF REACH OF CHILDREN**

### CAUTION



**Net Weight**  
**1.25 Lbs**  
04325140  
05976935C 110830AV3



<b>FIRST AID</b>	
<b>If in eyes</b>	<ul style="list-style-type: none"> <li>• Hold eye open and rinse slowly and gently with water for 15 to 20 minutes. Remove contact lenses, if present, after the first 5 minutes, then continue rinsing eye.</li> <li>• Call a poison control center or doctor for treatment advice.</li> </ul>
<b>If swallowed</b>	<ul style="list-style-type: none"> <li>• Call a poison control center or doctor immediately for treatment advice.</li> <li>• Have person sip a glass of water if able to swallow.</li> <li>• Do not induce vomiting unless told by a poison control center or doctor.</li> <li>• Do not give anything by mouth to an unconscious person.</li> </ul>
<b>If inhaled</b>	<ul style="list-style-type: none"> <li>• Move person to fresh air.</li> <li>• If person is not breathing, call 911 or an ambulance, then give artificial respiration, preferably mouth-to-mouth if possible.</li> <li>• Call a poison control center or doctor for further treatment advice.</li> </ul>
<b>If on skin</b>	<ul style="list-style-type: none"> <li>• Take off contaminated clothing.</li> <li>• Rinse skin immediately with plenty of water for 15 to 20 minutes.</li> <li>• Call a poison control center or doctor for treatment advice.</li> </ul>
<p>Have the product container or label with you when calling a poison control center or doctor or going for treatment. The Bayer Environmental Science Emergency Response Telephone No. is 1-800-334-7577.</p>	
<p><b>Note To Physician:</b> No specific antidote is available. Treat the patient symptomatically.</p>	

**PRECAUTIONARY STATEMENTS**

**HAZARDS TO HUMANS AND DOMESTIC ANIMALS**  
**CAUTION:** Causes moderate eye irritation. Harmful if swallowed, inhaled or absorbed through the skin. Do not get into eyes, on skin, or on clothing. Avoid breathing dust. If clothing becomes contaminated, remove and wash before reuse. Wash hands thoroughly with soap and warm water after handling.

**ENVIRONMENTAL HAZARDS**  
 This pesticide is toxic to fish and other aquatic organisms. Do not apply directly to water, or to areas where surface water is present or to intertidal areas below the mean high water mark. Apply this product only as specified on this label.

2.5"

4.5"

To protect the environment, do not allow pesticide to enter or run off into storm drains, drainage ditches, gutters or surface waters. Applying this product in calm weather when rain is not predicted for the next 24 hours will help to ensure that wind or rain does not blow or wash pesticide off the treatment area.

<b>PRO FACTS</b>	
• Ready-to-use	• Low-odor • Non-staining
<b>TEMPO 1% DUST Insecticide Ready To Use</b>	Contains 1% cyfluthrin
<b>CONTROLS</b>	<ul style="list-style-type: none"> <li>• Ants, cockroaches, and other crawling pests</li> <li>• Bees and wasps</li> <li>• Pantry and stored product pests</li> <li>• Wood-infesting pests</li> <li>• For specific insects, see inside label</li> </ul>
<b>WHERE TO APPLY</b>	In and around buildings and structures
<b>COVERAGE</b>	Treats up to 2,500 square feet
<b>HOW TO APPLY</b>	Directly in voids, cracks and crevices. For bees, wasps and ant mounds, see directions inside. Use appropriate dusting or injection equipment.
<b>RE-APPLY</b>	Every 7 to 10 days, if needed
<b>QUESTIONS</b>	For questions or comments, call toll-free 1-800-331-2867

#### **DIRECTIONS FOR USE**

It is a violation of Federal law to use this product in a manner inconsistent with its labeling.

#### **APPLICATION RESTRICTIONS**

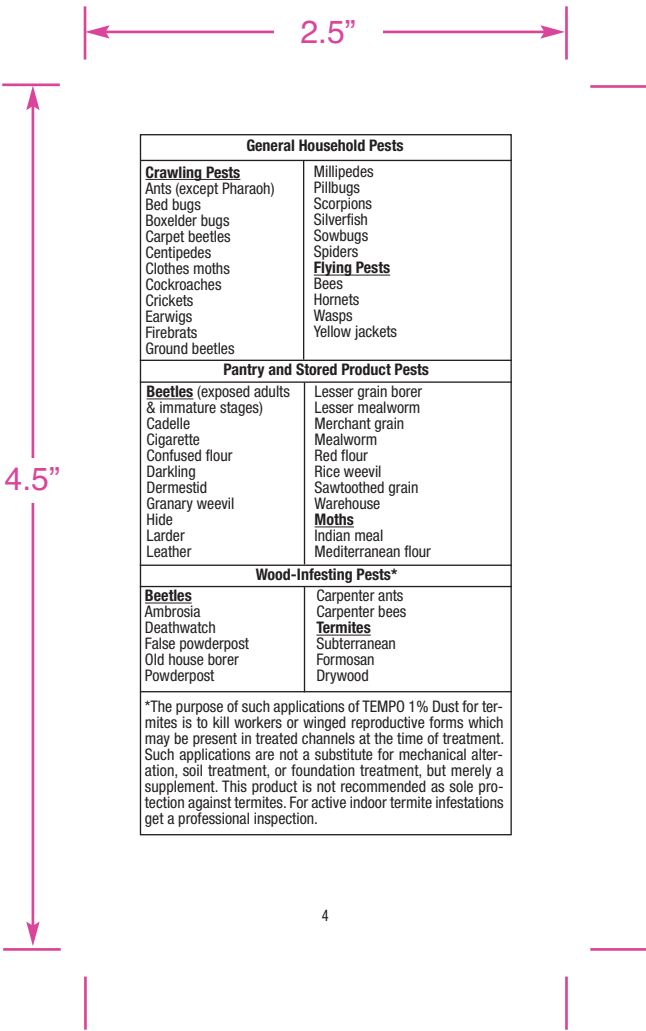
Do not water the treated area to the point of run-off.

Do not make applications during rain.

Do not apply directly to sewers or drains, or to any area like a gutter where drainage to sewers, storm drains, water bodies, or aquatic habitat can occur, except as directed by this label.

#### **PESTS**

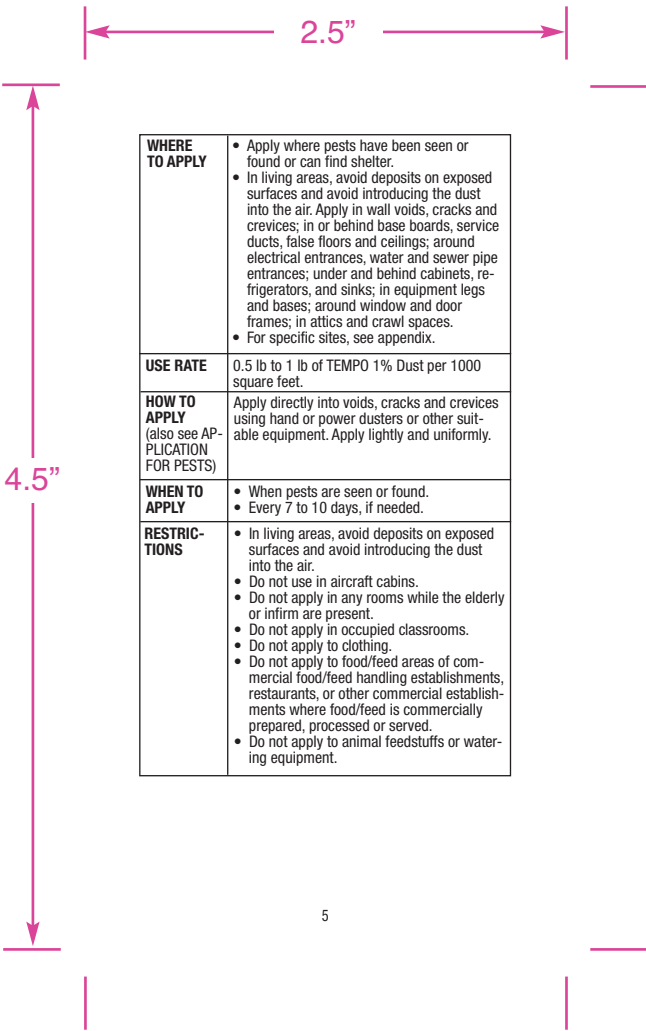
For residual pest control in and around buildings, structures, non-food/feed areas of food/feed handling establishments and modes of transport. This includes houses, hotels, motels and other non-food areas of stores, warehouses, hospitals, food processing facilities, and modes of transport. For a list of common facilities where this product may be used, see appendix.



2.5"

4.5"

General Household Pests	
<b>Crawling Pests</b> Ants (except Pharaoh) Bed bugs Boxelder bugs Carpet beetles Centipedes Clothes moths Cockroaches Crickets Earwigs Firebrats Ground beetles	Millipedes Pillbugs Scorpions Silverfish Sowbugs Spiders <b>Flying Pests</b> Bees Hornets Wasps Yellow jackets
Pantry and Stored Product Pests	
<b>Beetles</b> (exposed adults & immature stages) Cadelle Cigarette Confused flour Darkling Dermestid Granary weevil Hide Larder Leather	Lesser grain borer Lesser mealworm Merchant grain Mealworm Red flour Rice weevil Sawtoothed grain Warehouse <b>Moths</b> Indian meal Mediterranean flour
Wood-Infesting Pests*	
<b>Beetles</b> Ambrosia Deathwatch False powderpost Old house borer Powderpost	Carpenter ants Carpenter bees <b>Termites</b> Subterranean Formosan Drywood
<p>*The purpose of such applications of TEMPO 1% Dust for termites is to kill workers or winged reproductive forms which may be present in treated channels at the time of treatment. Such applications are not a substitute for mechanical alteration, soil treatment, or foundation treatment, but merely a supplement. This product is not recommended as sole protection against termites. For active indoor termite infestations get a professional inspection.</p>	



<b>WHERE TO APPLY</b>	<ul style="list-style-type: none"> <li>• Apply where pests have been seen or found or can find shelter.</li> <li>• In living areas, avoid deposits on exposed surfaces and avoid introducing the dust into the air. Apply in wall voids, cracks and crevices; in or behind base boards, service ducts, false floors and ceilings; around electrical entrances, water and sewer pipe entrances; under and behind cabinets, refrigerators, and sinks; in equipment legs and bases; around window and door frames; in attics and crawl spaces.</li> <li>• For specific sites, see appendix.</li> </ul>
<b>USE RATE</b>	0.5 lb to 1 lb of TEMPO 1% Dust per 1000 square feet.
<b>HOW TO APPLY</b> (also see APPLICATION FOR PESTS)	Apply directly into voids, cracks and crevices using hand or power dusters or other suitable equipment. Apply lightly and uniformly.
<b>WHEN TO APPLY</b>	<ul style="list-style-type: none"> <li>• When pests are seen or found.</li> <li>• Every 7 to 10 days, if needed.</li> </ul>
<b>RESTRICTIONS</b>	<ul style="list-style-type: none"> <li>• In living areas, avoid deposits on exposed surfaces and avoid introducing the dust into the air.</li> <li>• Do not use in aircraft cabins.</li> <li>• Do not apply in any rooms while the elderly or infirm are present.</li> <li>• Do not apply in occupied classrooms.</li> <li>• Do not apply to clothing.</li> <li>• Do not apply to food/feed areas of commercial food/feed handling establishments, restaurants, or other commercial establishments where food/feed is commercially prepared, processed or served.</li> <li>• Do not apply to animal feedstuffs or watering equipment.</li> </ul>

2.5"

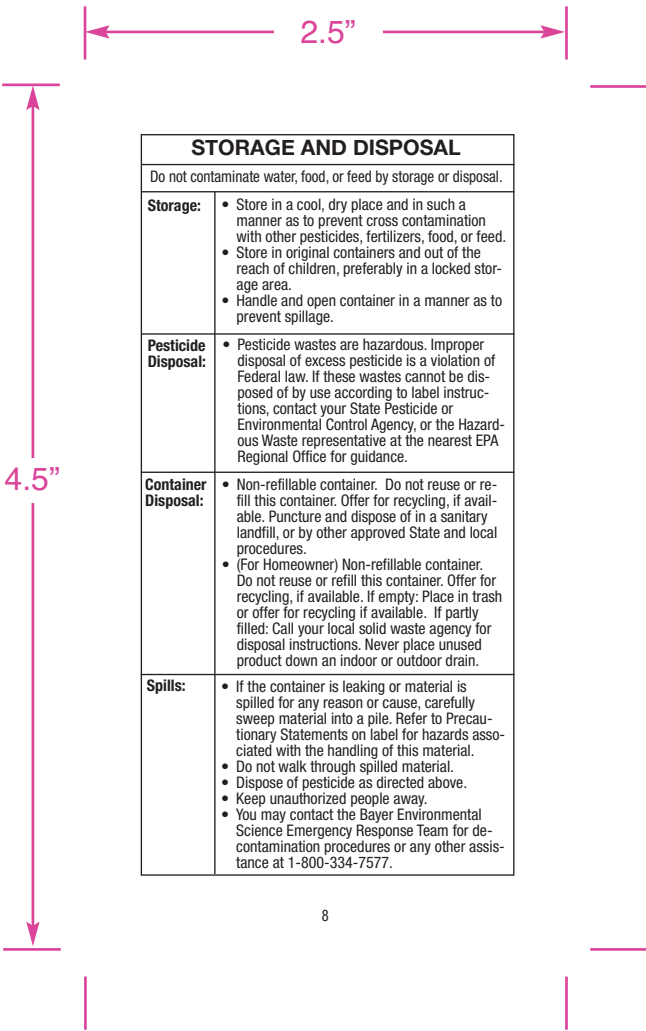
4.5"

<b>APPLICATION FOR PESTS</b>	
<b>CRAWLING PESTS</b>	
Ants	Apply to voids, cracks and crevices in and around doors and windows, baseboard cracks, and other places where ants enter structures.
Bed bugs	Apply to areas such as mattress folds and tufts, spring coils, cracks or hollow places in bed frames, furniture upholstery, and picture frame moldings. Let powder remain on treated surfaces for 4 to 6 hours, then vacuum the powder thoroughly, dispose of the vacuum bag properly, and place clean linens on the bed.
Carpet beetles	Apply under edges of floor coverings, baseboard cracks, under rugs and furniture, and in cracks and crevices in closets.
Clothes moths and silverfish	Apply to cracks and crevices in closets and other storage areas. This is an adjunct treatment and will not control moth larvae and silverfish already on the clothes. Do not apply to clothing.
Fire ants (including Red harvester ants, and Pavement ants)	USE RATE: 2 to 6 teaspoons of TEMPO 1% Dust per mound. Avoid disturbing the mound before applying. If possible, treat all colonies in the area. Distribute the product evenly over each mound and around the perimeter of the mound (about 18 inches from the outer edge); use the higher rates for larger mounds. For best results, water mounds gently after applying. High water pressure will cause the ants to move the mound. Treat new mounds as they appear.
<b>FLYING PESTS</b>	
Bees Hornets Wasps Yellow jackets	Thoroughly dust nests and entrances and surrounding areas. To treat nests in wall voids, drill a hole in the area, dust entrance and surrounding areas. Wear protective clothing if necessary to avoid stings. You may also help avoid stings by treating wasp and bee nests in the evening when the insects are less active and are inside the nest. For best results, check nests within one or two days to ensure complete kill. Remove and

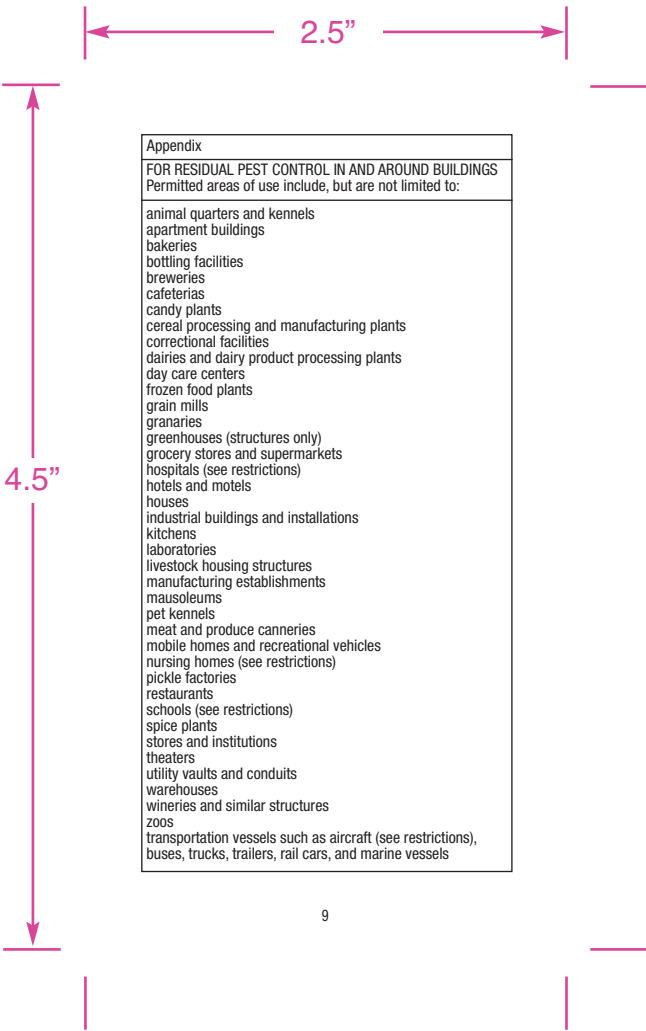
2.5"

4.5"

	destroy treated nests to prevent emergence of newly hatched insects, secondary pest problems, and possible staining from honey. If removal is not possible, retreat the nest, if necessary.
<b>PANTRY &amp; STORED PRODUCT PESTS</b>	
<b>Beetles and Moths</b>	Clean area thoroughly, removing infested foodstuffs and all utensils, uncovered foodstuffs (or any with opened package), shelf paper and other objects. Apply in voids, cracks and crevices behind and under cupboards, food storage areas, and cabinets. Do not apply directly on food, utensils, or food storage shelves.
<b>WOOD-INFESTING PESTS</b>	
<b>Termites and wood-infesting beetles</b>	Apply to voids and galleries in damaged wood, in spaces between wooden structural members, and between the sill plate and foundation where wood is vulnerable. For inaccessible areas, drill into the damaged wood or wall voids and then inject dust using a suitable directional injector. Note that drilling and treating may not give complete coverage of infested and vulnerable voids or galleries.
<b>Termite carton nests</b>	Termite carton nests in building voids may be injected with a pointed injection tool at varying depths. For best results, remove carton nests material when possible.
<b>Above-ground termites and carpenter ants</b>	For control inside trees, utility poles, fencing and decking materials and similar structural members, drill to find the interior infested cavity and inject dust.
<b>Carpenter ants</b>	Treat wall voids by access around electrical entrances, water lines or similar openings. Apply to voids, cracks and crevices in and around doors and windows, under fascia boards, top of sill plate, cracks and crevices in crawl space, under shingles, behind gutters, and other areas where carpenter ants may enter.
<b>Carpenter bees</b>	Apply directly into gallery entrance holes. Leave entrance holes open for 24 hours after treatment to be sure that returning bees are also killed. When there is no activity, seal the hole with a suitable sealant.







2.5"

4.5"

**FOR FOOD/FEED HANDLING ESTABLISHMENTS**

TEMPO 1% Dust applications are permitted in non-food/feed areas of food handling establishments only as a void or crack and crevice treatment. It is not permitted in the food/feed areas of food/feed handling establishments. Food/feed handling establishments are defined as places other than private residences where exposed food/feed is held, processed, prepared or served. Included also are areas for receiving, storing, packing (canning, bottling, wrapping, boxing), preparing, edible waste storage and enclosed processing systems (mills, dairies, edible oils, syrups) of food. Serving areas where food is exposed and the facility is in operation are also considered food areas.

Non-food/ non-feed handling areas of food/feed handling establishments include garbage rooms, lavatories, floor drains (to sewers), entries and vestibules, offices, locker rooms, machine rooms, boiler rooms, garages, mop closets, and storage (after canning or bottling).

**IMPORTANT: READ BEFORE USE**

Read the entire Directions for Use, Conditions, Disclaimer of Warranties and Limitations of Liability before using this product. If terms are not acceptable, return the unopened product container at once. By using this product, user or buyer accepts the following Conditions, Disclaimer of Warranties and Limitations of Liability.

**CONDITIONS:** The directions for use of this product are believed to be adequate and must be followed carefully. However, it is impossible to eliminate all risks associated with the use of this product. Crop injury, ineffectiveness or other unintended consequences may result because of such factors as weather conditions, presence of other materials, or the manner of use or application, all of which are beyond the control of Bayer CropScience LP. All such risks shall be assumed by the user or buyer.

**DISCLAIMER OF WARRANTIES:** TO THE EXTENT CONSISTENT WITH APPLICABLE LAW, BAYER CROPSCIENCE LP MAKES NO OTHER WARRANTIES, EXPRESS OR IMPLIED, OF MERCHANTABILITY OR OF FITNESS FOR A PARTICULAR PURPOSE OR OTHERWISE, THAT EXTEND BEYOND THE STATEMENTS MADE ON THIS LABEL. No agent of Bayer CropScience LP is authorized to make any warranties beyond those contained herein or to modify the warranties contained herein. TO THE EXTENT CONSISTENT WITH APPLICABLE LAW, BAYER CROPSCIENCE LP DISCLAIMS ANY LIABILITY WHATSOEVER FOR SPECIAL, INCIDENTAL OR CONSEQUENTIAL DAMAGES RESULTING FROM THE USE OR HANDLING OF THIS PRODUCT.

2.5"

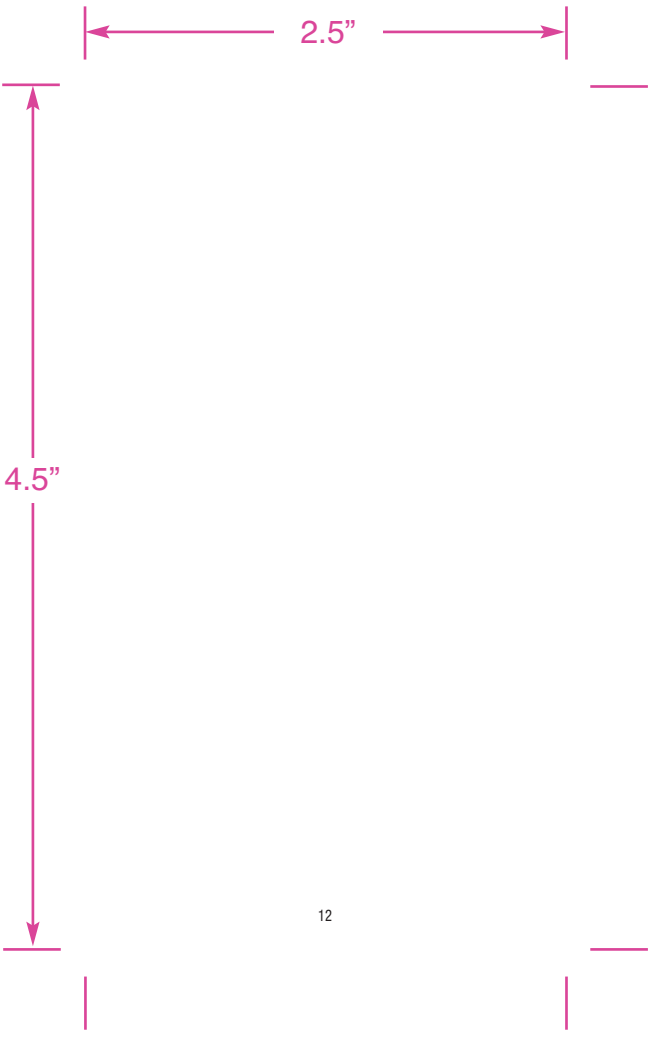
**LIMITATIONS OF LIABILITY:** TO THE EXTENT CONSISTENT WITH APPLICABLE LAW, THE EXCLUSIVE REMEDY OF THE USER OR BUYER FOR ANY AND ALL LOSSES, INJURIES OR DAMAGES RESULTING FROM THE USE OR HANDLING OF THIS PRODUCT, WHETHER IN CONTRACT, WARRANTY, TORT, NEGLIGENCE, STRICT LIABILITY OR OTHERWISE, SHALL NOT EXCEED THE PURCHASE PRICE PAID, OR AT BAYER CROPSCIENCE LP'S ELECTION, THE REPLACEMENT OF PRODUCT.

Bayer (reg'd), the Bayer Cross (reg'd) and Tempo® are registered trademarks of Bayer.

4.5"

**Bayer**

Produced for:  
Bayer Environmental Science  
A Division of Bayer CropScience LP  
5000 CentreGreen Way, Suite 400  
Cary, NC 27513



3"



# Tempo<sup>®</sup>

## 1% DUST INSECTICIDE Ready To Use

For Use Only By Pest Management  
Professionals and Commercial Applicators

**Active Ingredient:** Cyfluthrin, cyano(4-fluoro-3-phenoxyphenyl)-methyl 3-(2,2-dichloroethenyl)-2,2-dimethylcyclopropane-carboxylate ..... 1%

**OTHER Ingredients:** ..... 99%

**Total:** ..... 100%

EPA Reg. No. 432-1373

**STOP - Read the label before use.  
KEEP OUT OF REACH OF CHILDREN  
CAUTION**

### FIRST AID

<b>If in eyes</b>	<ul style="list-style-type: none"> <li>Hold eye open and rinse slowly and gently with water for 15 to 20 minutes. Remove contact lenses, if present, after the first 5 minutes, then continue rinsing eye.</li> <li>Call a poison control center or doctor for treatment advice.</li> </ul>
<b>If swallowed</b>	<ul style="list-style-type: none"> <li>Call a poison control center or doctor immediately for treatment advice.</li> <li>Have person sip a glass of water if able to swallow.</li> <li>Do not induce vomiting unless told to by a poison control center or doctor.</li> <li>Do not give anything by mouth to an unconscious person.</li> </ul>
<b>If inhaled</b>	<ul style="list-style-type: none"> <li>Move person to fresh air.</li> <li>If person is not breathing, call 911 or an ambulance, then give artificial respiration, preferably mouth-to-mouth if possible.</li> <li>Call a poison control center or doctor for further treatment advice.</li> </ul>
<b>If on skin</b>	<ul style="list-style-type: none"> <li>Take off contaminated clothing.</li> <li>Rinse skin immediately with plenty of water for 15 to 20 minutes.</li> <li>Call a poison control center or doctor for treatment advice.</li> </ul>

Have the product container or label with you when calling a poison control center or doctor or going for treatment. The Bayer Environmental Science Emergency Response Telephone No. is 1-800-334-7577.

**Note To Physician:** No specific antidote is available. Treat the patient symptomatically.

**Net Weight**  
**1.25 Pounds**

**04325140**  
**05976935C 110830AV3**

▲  
Pull here to open

4.5"