

Campbell Creek Estuary Conservation Project

Great Land Trust proposes to:

- 1) Purchase the 60 acre Campbell Creek estuary property,
- 2) Donate the property to the Municipality,
- 3) Retain a Conservation Easement to ensure it will be protected in perpetuity.

When conserved the property will provide permanent protection for valuable fish and wildlife habitat and provide access to Anchorage Coastal Wildlife Refuge. The property is an excellent site for educational programs for youth and the citizens of Anchorage.

The total amount needed to conserve Campbell Creek Estuary is \$6.9 million by September 30, 2010. Great Land Trust seeking \$500,000 to complete our fundraising, your help is needed to make this project successful!

Contact us at (907) 278-4998 or visit us on the web at greatlandtrust.org.

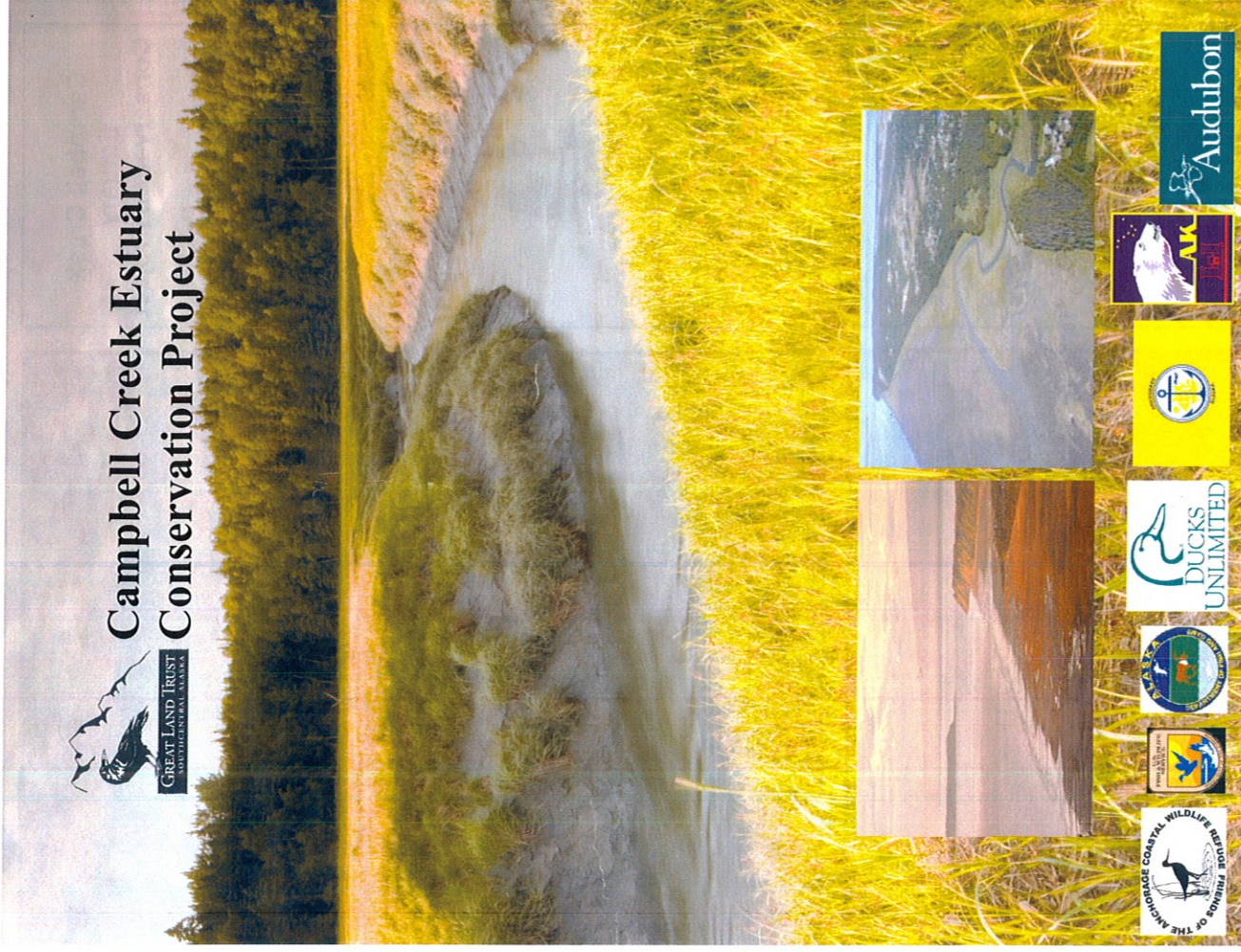


Your Land. Your Trust.

Working with willing landowners and other partners to conserve Southcentral Alaska's lands and waterways

(907)278-4998

www.greatlandtrust.org


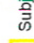
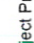
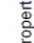


Campbell Creek Estuary Conservation Project



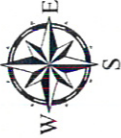
44513

Campbell Creek Estuary Conservation Project Anchorage, Alaska

- Legend**
-  Subject Properties
 -  State of Alaska
 -  Parcel Boundaries
 -  Roads



Project Location



0 200 400 800 Feet

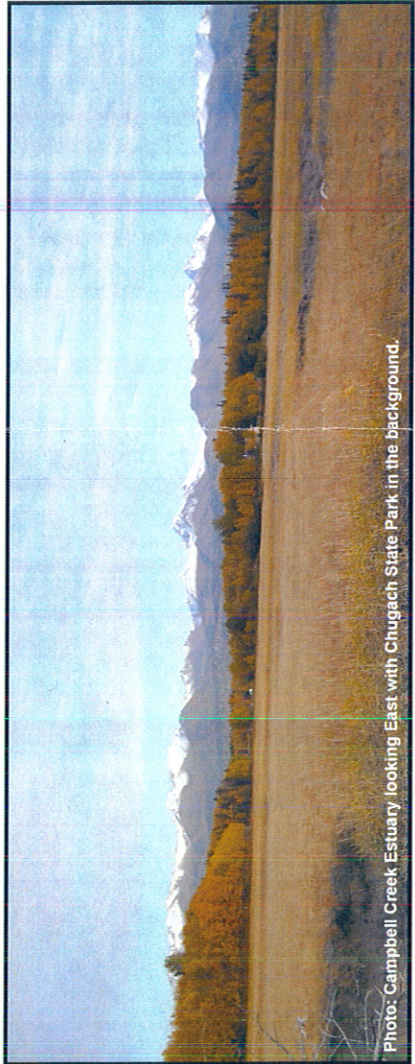
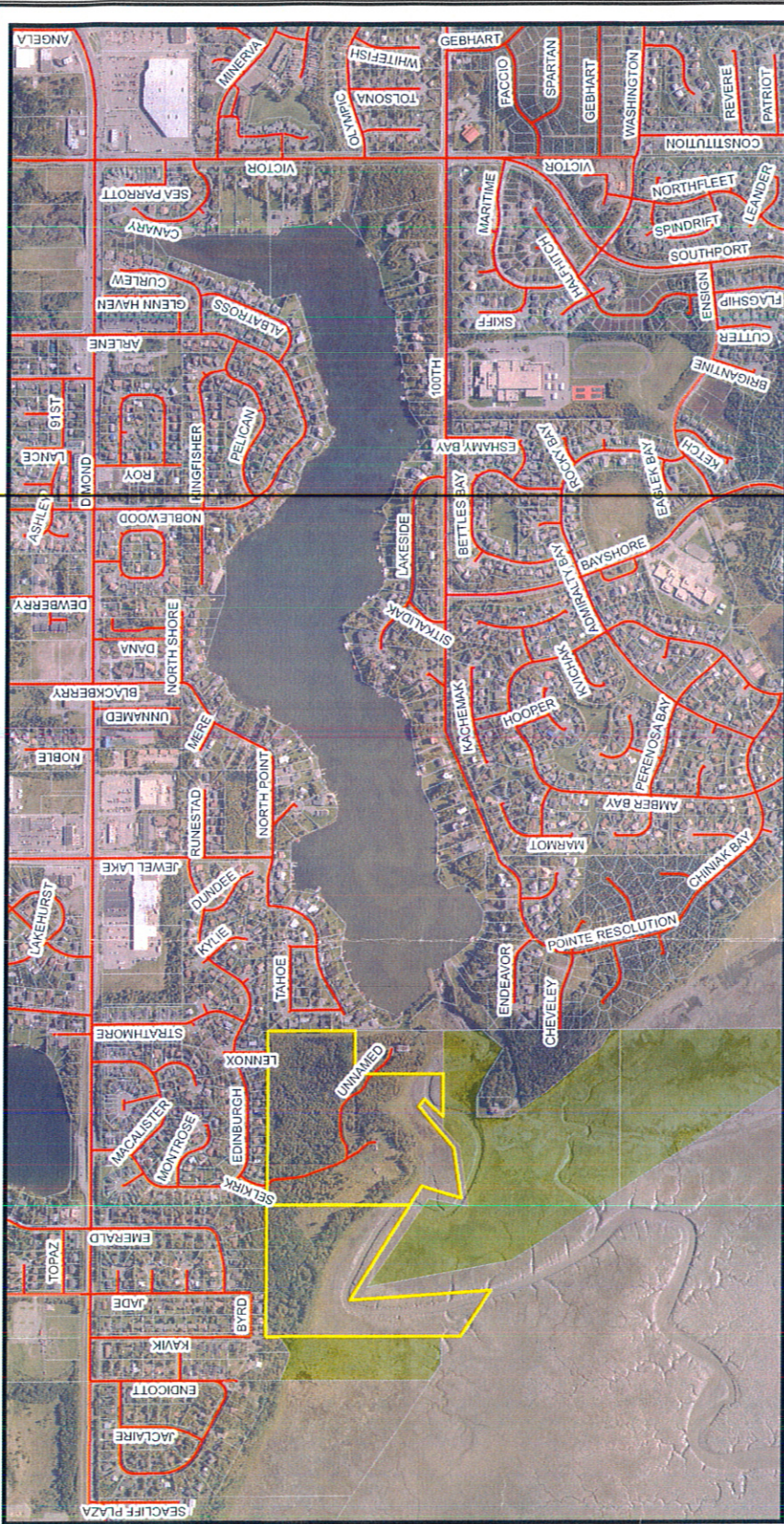
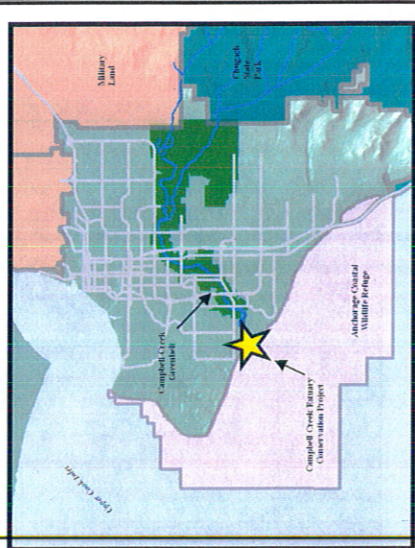


Photo: Campbell Creek Estuary looking East with Chugach State Park in the background.



GREAT LAND TRUST
Working with willing landowners and other partners to conserve Southcentral Alaska's lands and waterways

619 E Ship Creek Ave.
Suite 321
Anchorage, Alaska 99501
(907) 278-4998
info@greatlandtrust.org
www.greatlandtrust.org





Conceptual Property Layout

Campbell Creek Estuary - Municipal Park Partnership Project: Great Land Trust and Municipality of Anchorage

