

# Natzuhini Watershed Fish Habitat Assessment

Map Version 04/22/14

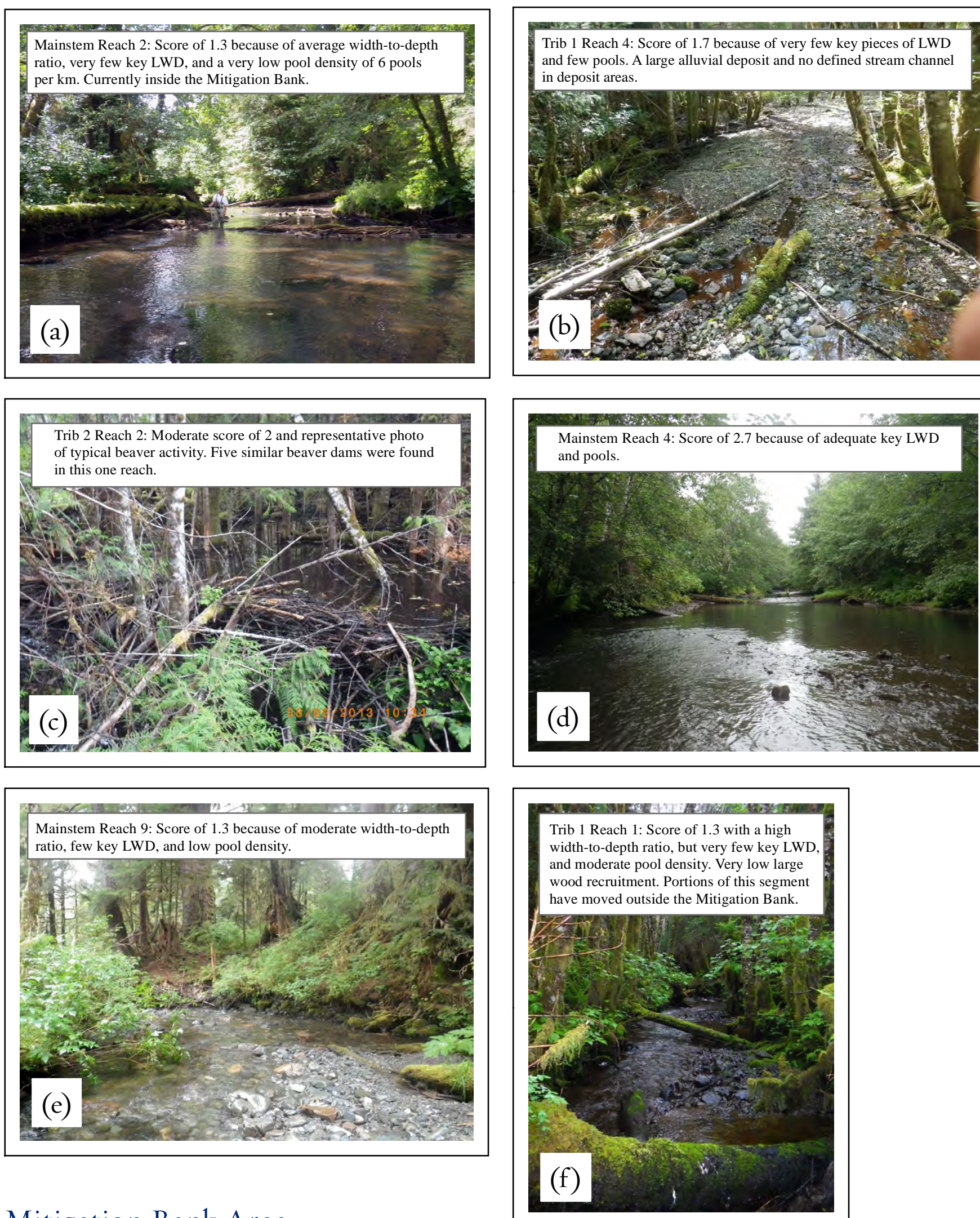
## Project Description

The Natzuhini River was surveyed using ADFG anadromous waters stream survey methods (Frenette et al. 2010). Fish habitat conditions were analyzed using the USFS statistical evaluation metrics of 262 comparable reaches in unmanaged watersheds (Tucker and Caouette 2008). This map was produced to visualize the final stream condition scores and discuss possible opportunities for restoration.

## Project Summary Results

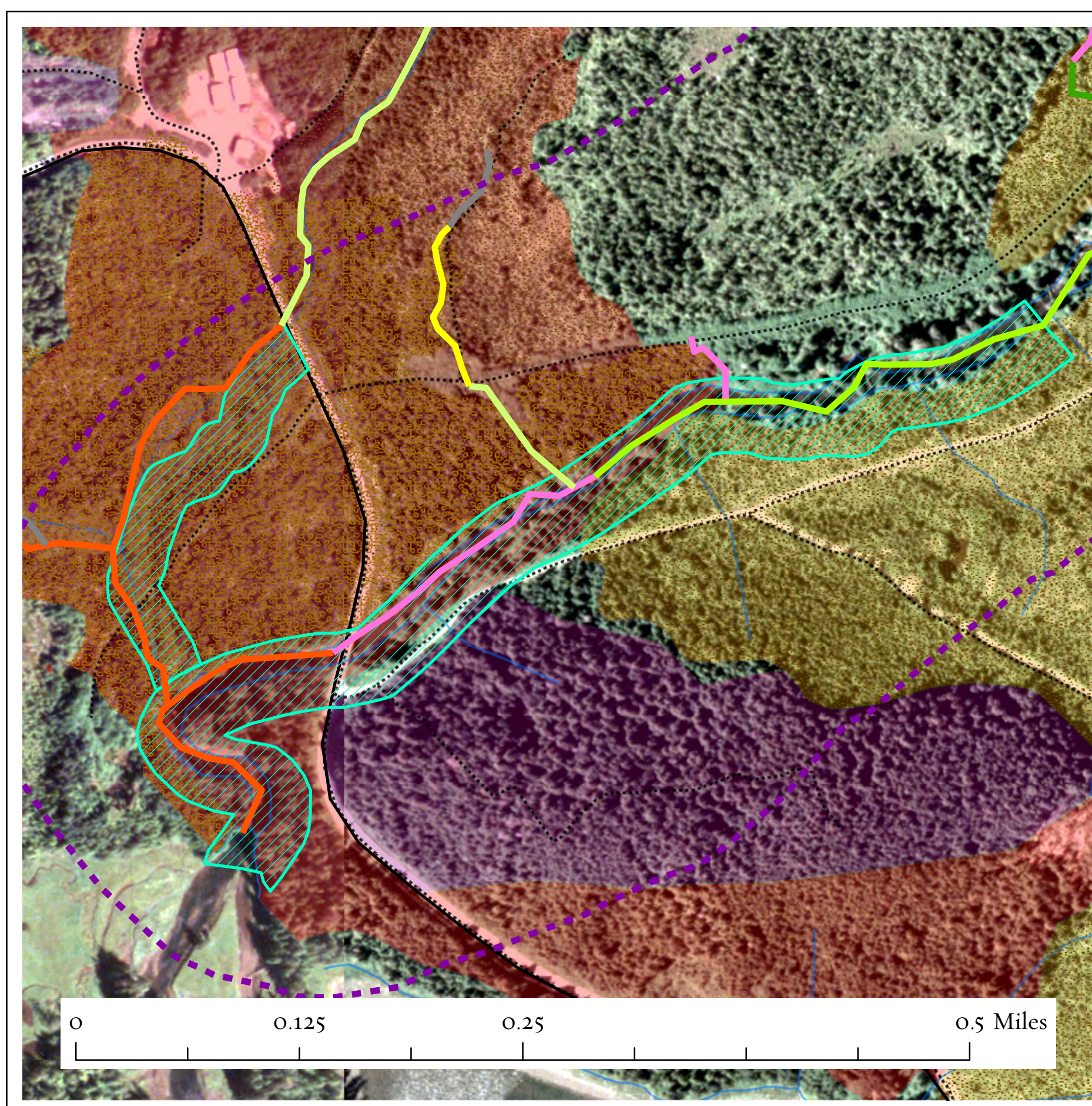
- Watershed Area: 19,848 Acres
- Total Stream Habitat Surveyed: 7.13 Miles
- Stream in Good Condition: 1.12 Miles (15.7%)
- Stream in Moderate Condition: 5.11 Miles (71.7%)
- Stream in Poor Condition: 0.90 Miles (12.6%)

## Field Photographs



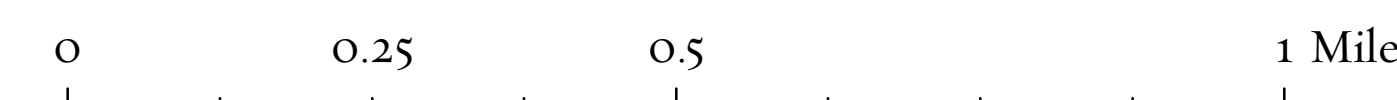
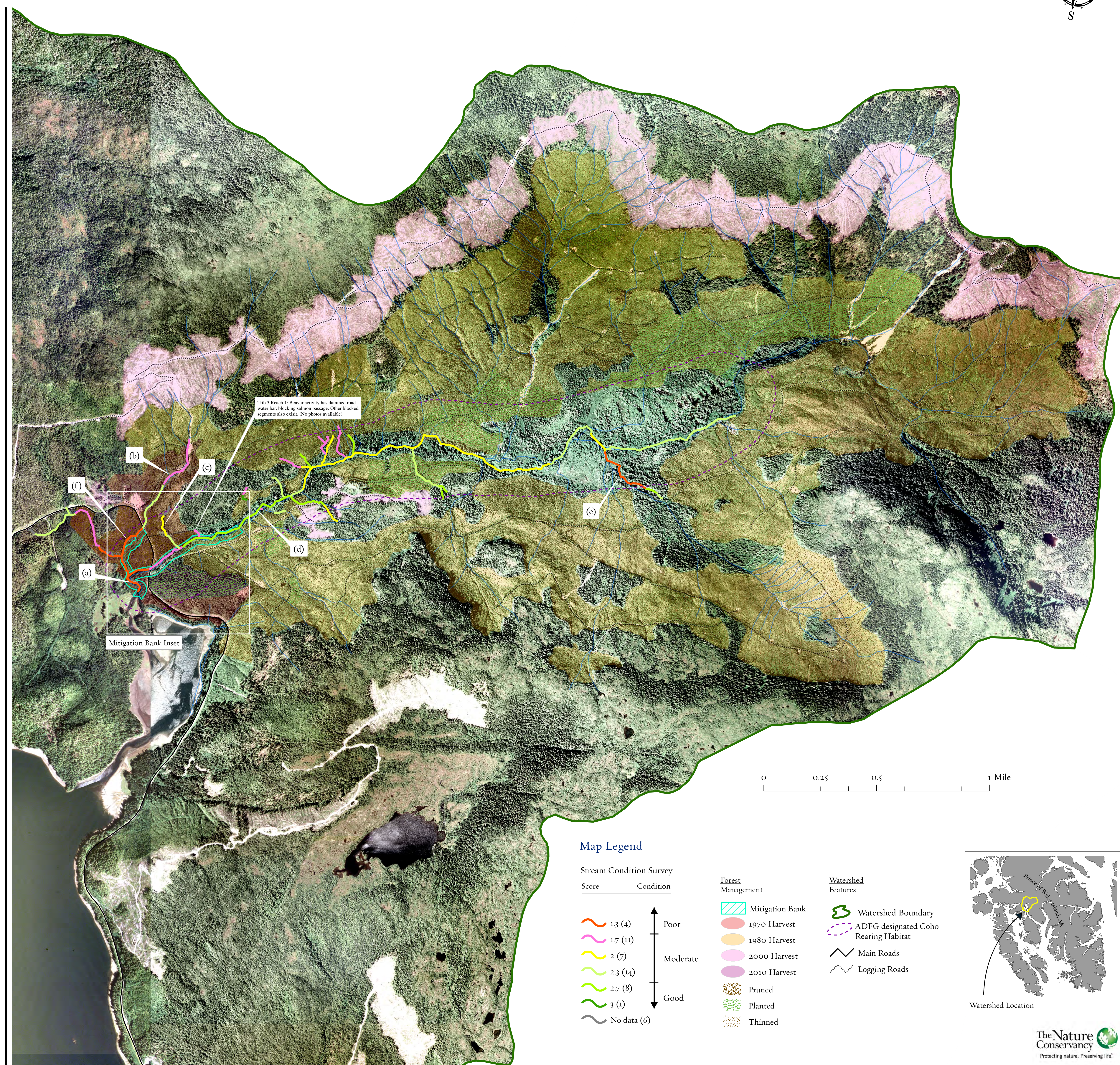
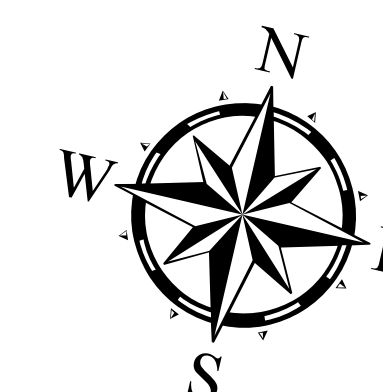
## Mitigation Bank Area

- Limits restoration work in this area
- Past treatments focused on ecological lift
- Riparian thinning for conifer regeneration
- Individual tree fertilization



## References

- Frenette et al. 2010. Working Protocol - Instructions and Guidelines for Anadromous Waters Catalog (AWC) nominations to the Alaska Department of Fish and Game, Douglas, Alaska.
- Tucker, E., and J. Caouette. 2008. Statistical Analysis of Aquatic Habitat Variables in the Tongass National Forest. U.S. Forest Service, Petersburg, Alaska.



## Map Legend

Stream Condition Survey		Forest Management		Watershed Features	
Score	Condition				
13 (4)	Poor	[Blue hatched]	Mitigation Bank	[Green dashed]	Watershed Boundary
17 (11)		[Pink]	1970 Harvest	[Purple dashed]	ADFG designated Coho Rearing Habitat
2 (7)		[Orange]	1980 Harvest	[Black line]	Main Roads
2.3 (14)	Moderate	[Light Blue]	2000 Harvest	[Grey dashed]	Logging Roads
2.7 (8)		[Purple]	2010 Harvest		
3 (1)	Good	[Brown]	Pruned		
No data (6)		[Green]	Planted		
		[Light Green]	Thinned		

