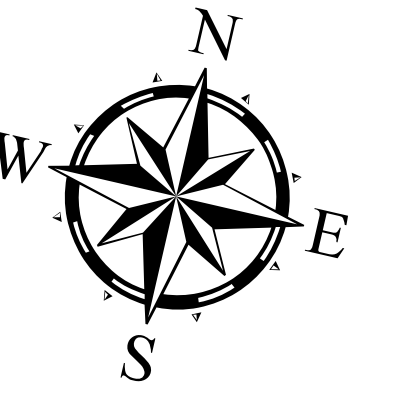


Natzuhini Watershed Integrated Fish Habitat Assessment

Project Partners: Hydaburg Cooperative Association, Kai Environmental, Sealaska, and The Nature Conservancy



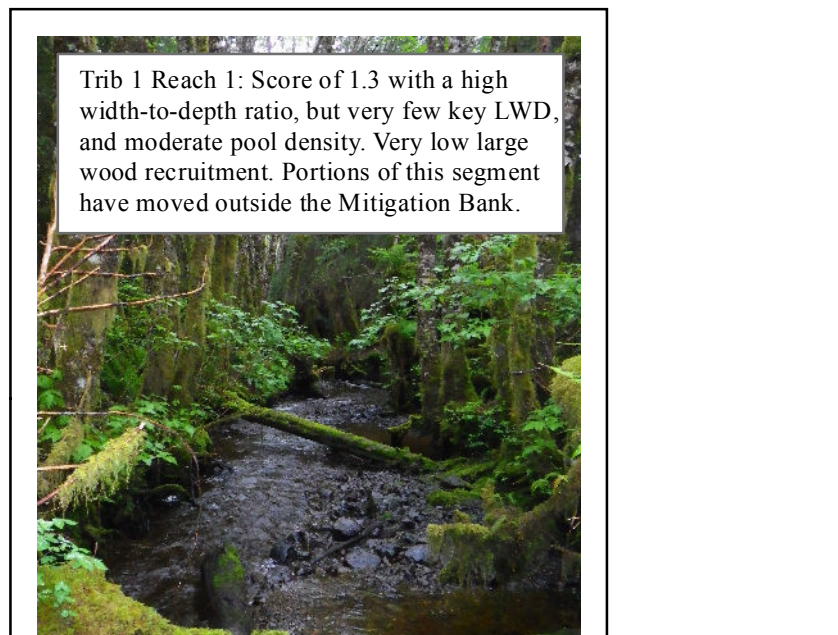
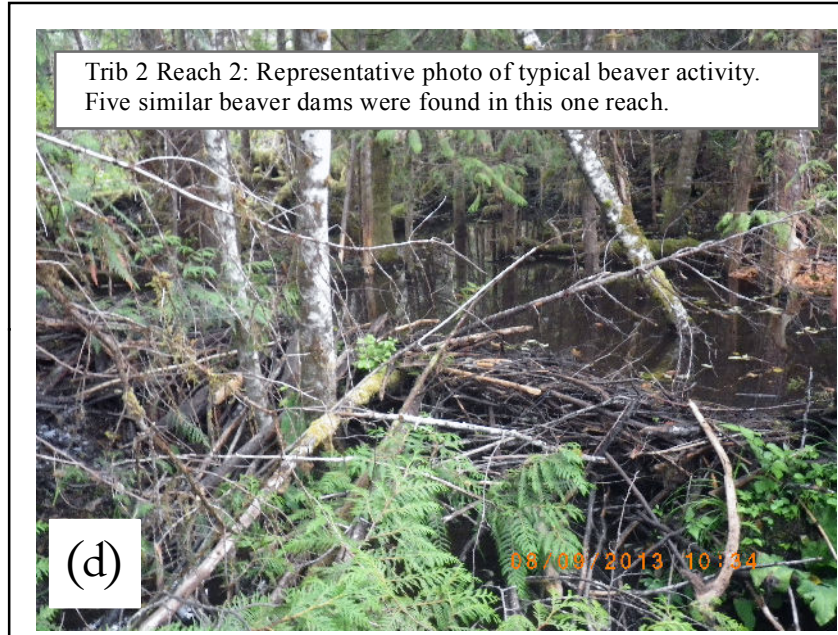
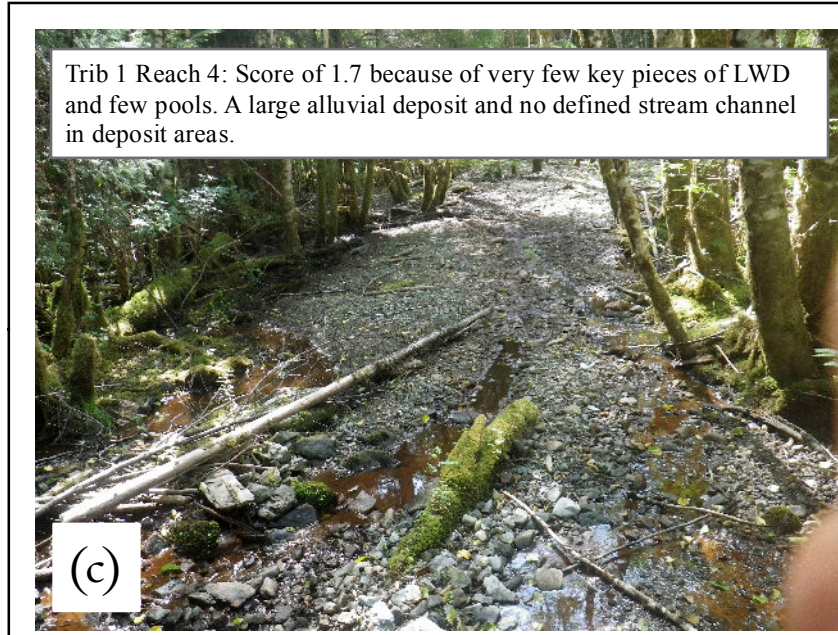
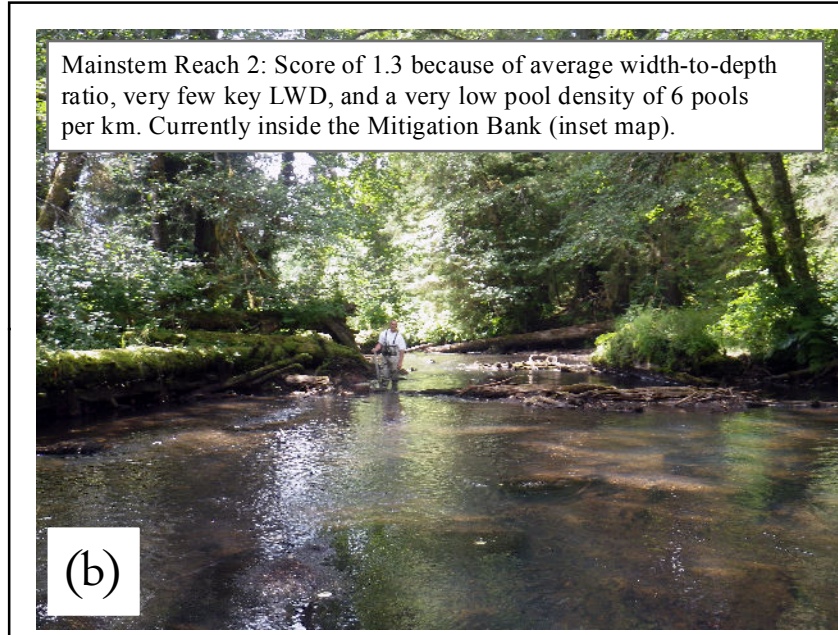
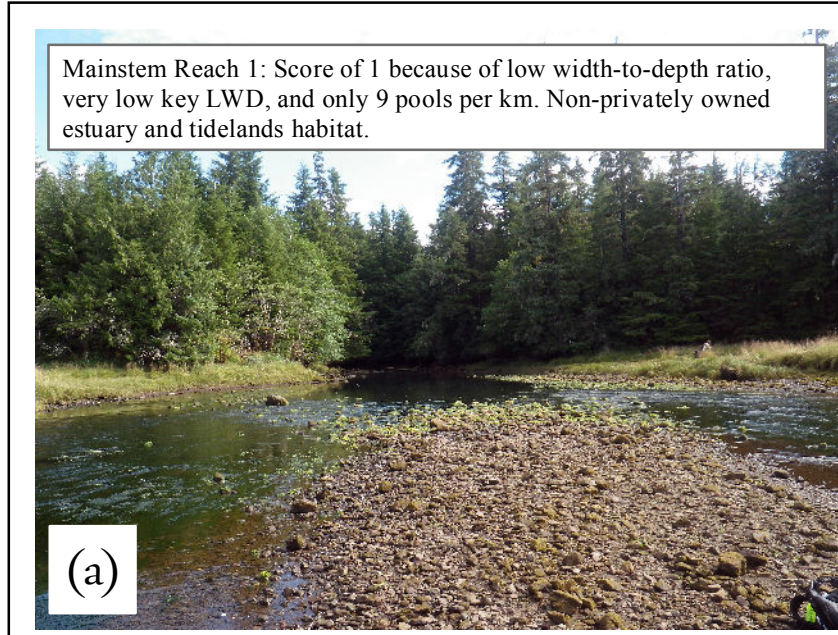
Project Description

The Natzuhini River was surveyed using ADFG anadromous waters stream survey methods (Frenette et al. 2010). Fish habitat conditions were analyzed using the USFS statistical evaluation metrics of 262 comparable reaches in unmanaged watersheds (Tucker and Caouette 2008). This map was produced to visualize the final stream condition scores and discuss possible opportunities for restoration.

Project Summary Results

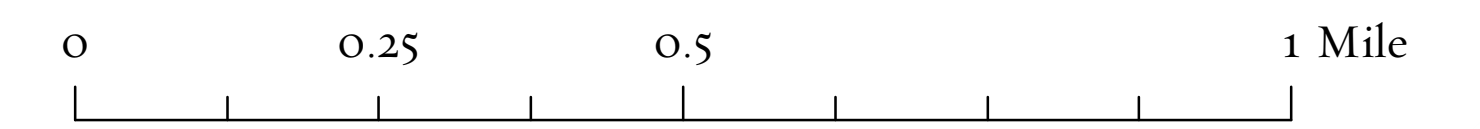
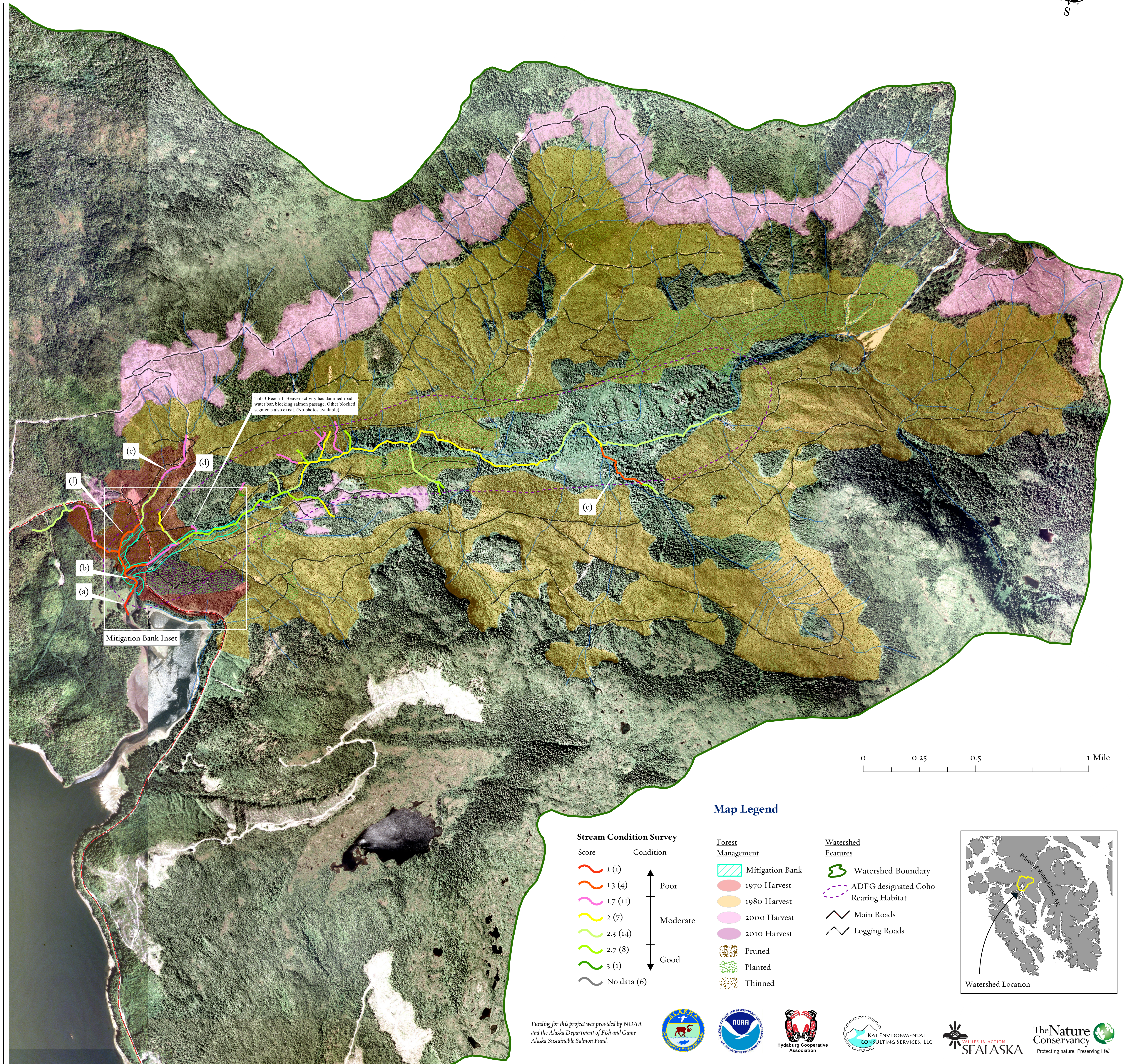
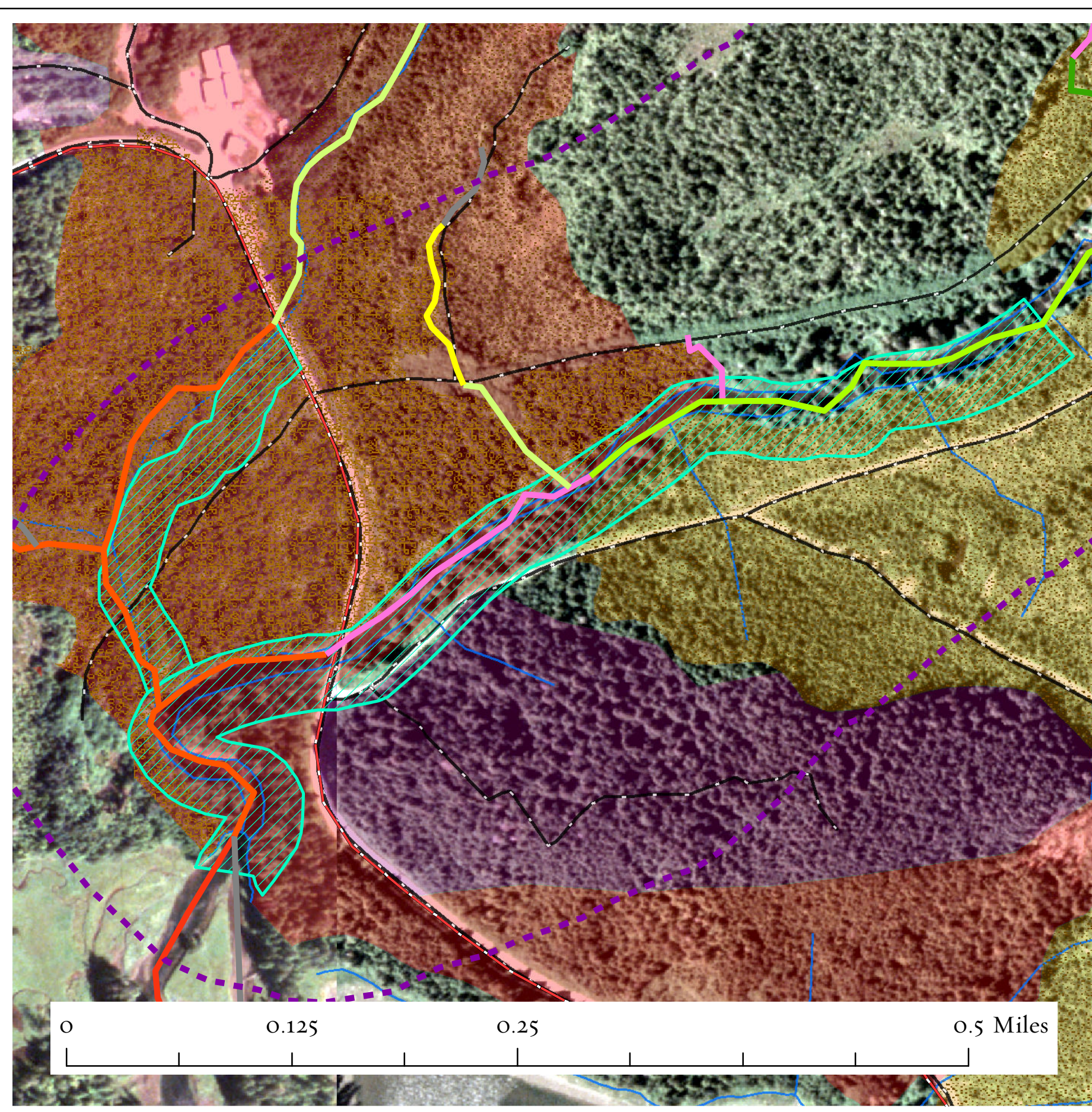
- Watershed Area: 19,848 Acres
- Total Stream Habitat Surveyed: 7.27 Miles
- Stream in Good Condition: 1.12 Miles (15.4%)
- Stream in Moderate Condition: 5.11 Miles (70.3%)
- Stream in Poor Condition: 1.04 Miles (14.3%)

Field Photographs



Mitigation Bank Area

- Limits restoration work in this area
- Past treatments focused on ecological life
- Riparian thinning for conifer regeneration
- Individual tree fertilization



Map Legend

Stream Condition Survey

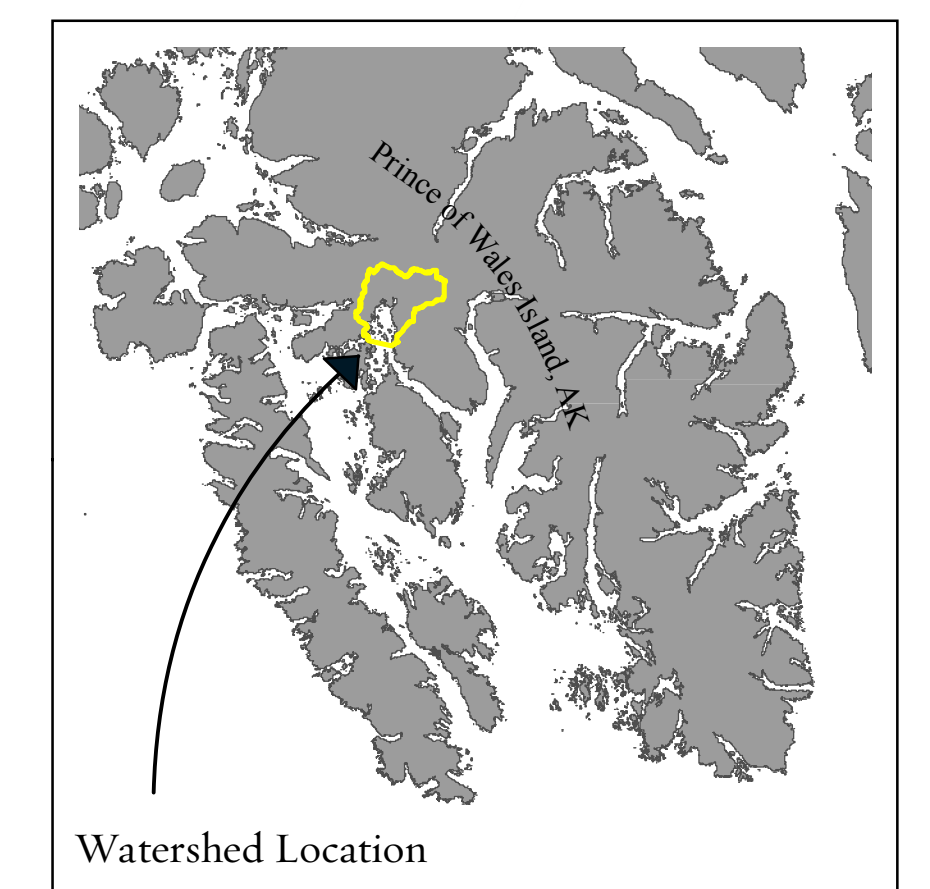
Score	Condition
1 (1)	Poor
1.3 (4)	
1.7 (11)	Moderate
2 (7)	
2.3 (14)	Good
2.7 (8)	
3 (1)	
No data (6)	

Forest Management

Mitigation Bank
1970 Harvest
1980 Harvest
2000 Harvest
2010 Harvest
Pruned
Planted
Thinned

Watershed Features

Watershed Boundary
ADFG designated Coho Rearing Habitat
Main Roads
Logging Roads



References

- Frenette et al. 2010. Working Protocol - Instructions and Guidelines for Anadromous Waters Catalog (AWC) nominations to the Alaska Department of Fish and Game, Douglas, Alaska.
- Tucker, E., and J. Caouette. 2008. Statistical Analysis of Aquatic Habitat Variables in the Tongass National Forest. U.S. Forest Service, Petersburg, Alaska.

Funding for this project was provided by NOAA and the Alaska Department of Fish and Game Alaska Sustainable Salmon Fund.

