



State of Alaska  
Department of Fish and Game  
Division of Sport Fish

Nomination Form  
Anadromous Waters Catalog

Region Southeast USGS Quad(s) Craig A-3

AWC Number of Water Body 103-25-10700

Name of Water body Trap Creek Tributary 1.1  USGS Name  Local Name

Addition  Deletion  Correction  Backup Information

For Office Use

Nomination # _____	_____	_____
Revision Year: _____	Fisheries Scientist	Date _____
Revision to: Atlas _____ Catalog _____	Habitat Operations Manager	Date _____
Both _____	AWC Project Biologist	Date _____
Revision Code: _____	GIS Analyst	Date _____

OBSERVATION INFORMATION

Species	Date(s) Observed	Spawning	Rearing	Present	Anadromous
Coho salmon			X	X	<input checked="" type="checkbox"/>
Pink salmon		X			<input checked="" type="checkbox"/>
Rainbow trout				X	<input type="checkbox"/>
Dolly Varden				X	<input type="checkbox"/>
					<input type="checkbox"/>

**IMPORTANT:** Provide all supporting documentation that this water body is important for the spawning, rearing or migration of anadromous fish, including: number of fish and life stages observed; sampling methods, sampling duration and area sampled; copies of field notes; etc. Attach a copy of a map showing location of mouth and observed upper extent of each species, as well as other information such as: specific stream reaches observed as spawning or rearing habitat; locations, types, and heights of any barriers; etc.

**Comments**

See supplemental information. This package was prepared by Cathy Needham. For questions or additional information contact Cathy Needham at 907-723-4436 or cathy@kaienvironmental.com or Christine Woll at 907-586-8623 or cwooll@tnc.org

Name of Observer (please print): Anthony Christianson  
 Signature: *Anthony Christianson*  
 Agency: Hydaburg Cooperative Association  
 Address: P.O. Box 349  
Hydaburg, AK 99922

Date: 5/26/17

This certifies that in my best professional judgment and belief the above information is evidence that this waterbody should be included in or deleted from the Anadromous Waters Catalog.

Signature of Area Biologist: \_\_\_\_\_ Date: \_\_\_\_\_ Revision 11/13  
 Name of Area Biologist (please print): \_\_\_\_\_

## Supplemental information for Trap Creek Tributary 1 and Tributary 1.1

Tributary 1 of Trap Creek is currently listed in the Anadromous Waters Catalog (103-25-10700 and 103-25-10700-2005). The listing coho salmon spawning and rearing and pink salmon rearing in Tributary 1. This current nomination includes the addition pink salmon spawning in Tributary 1. It also includes the addition of Tributary 1.1 for coho salmon present and rearing (see map). It is also noted Dolly Varden and rainbow trout were also present in traps set in the stream. An ADFG fish trapping permit datasheet is attached to this nomination packet for further details on fish trapping efforts.

Stream mapping and survey data was collected by the Hydaburg Cooperative Association Stream Survey crew for Tributary 1 and Tributary 1.1 on June 2<sup>nd</sup>, June 7<sup>th</sup> and June 8<sup>th</sup>, 2016. Data was taken on five reaches (reach numbers in the tables correspond to a master dataset; see attached figure for locations). The stream survey data are in the following table:

	<b>Reach 8</b>	<b>Reach 9</b>	<b>Reach 10</b>
<b>Average stream gradient</b>	1.3	3.1	4.3
<b>Average bankfull width</b>	7.1	3.9	3.9
<b>Average channel bed width</b>	6.6	3.2	5.2
<b>Average incision depth</b>	0.72	0.54	0.61
<b>Bank composition</b>	mixed	mixed	Mixed
<b>Dominant substrate</b>	Very course gravel	Very course gravel	Small cobble
<b>Sub-dominate substrate</b>	Small cobble; course gravel	Course grave; small cobble	Very course gravel; large cobble
<b>Large wood count</b>	298	128	74
<b>Key wood count</b>	60	18	5
<b>Macro-pool count</b>	44	15	11

	<b>Reach 11</b>	<b>Reach 12</b>
<b>Average stream gradient</b>	3.0	6.5
<b>Average bankfull width</b>	4.5	4.1
<b>Average channel bed width</b>	4.5	4.1
<b>Average incision depth</b>	0.71	0.93
<b>Bank composition</b>	Mixed	Bedrock
<b>Dominant substrate</b>	Very course gravel	Bedrock
<b>Sub-dominate substrate</b>	Small cobble; large cobble	Medium boulder, small boulder
<b>Large wood count</b>	77	78
<b>Key wood count</b>	14	3
<b>Macro-pool count</b>	27	31

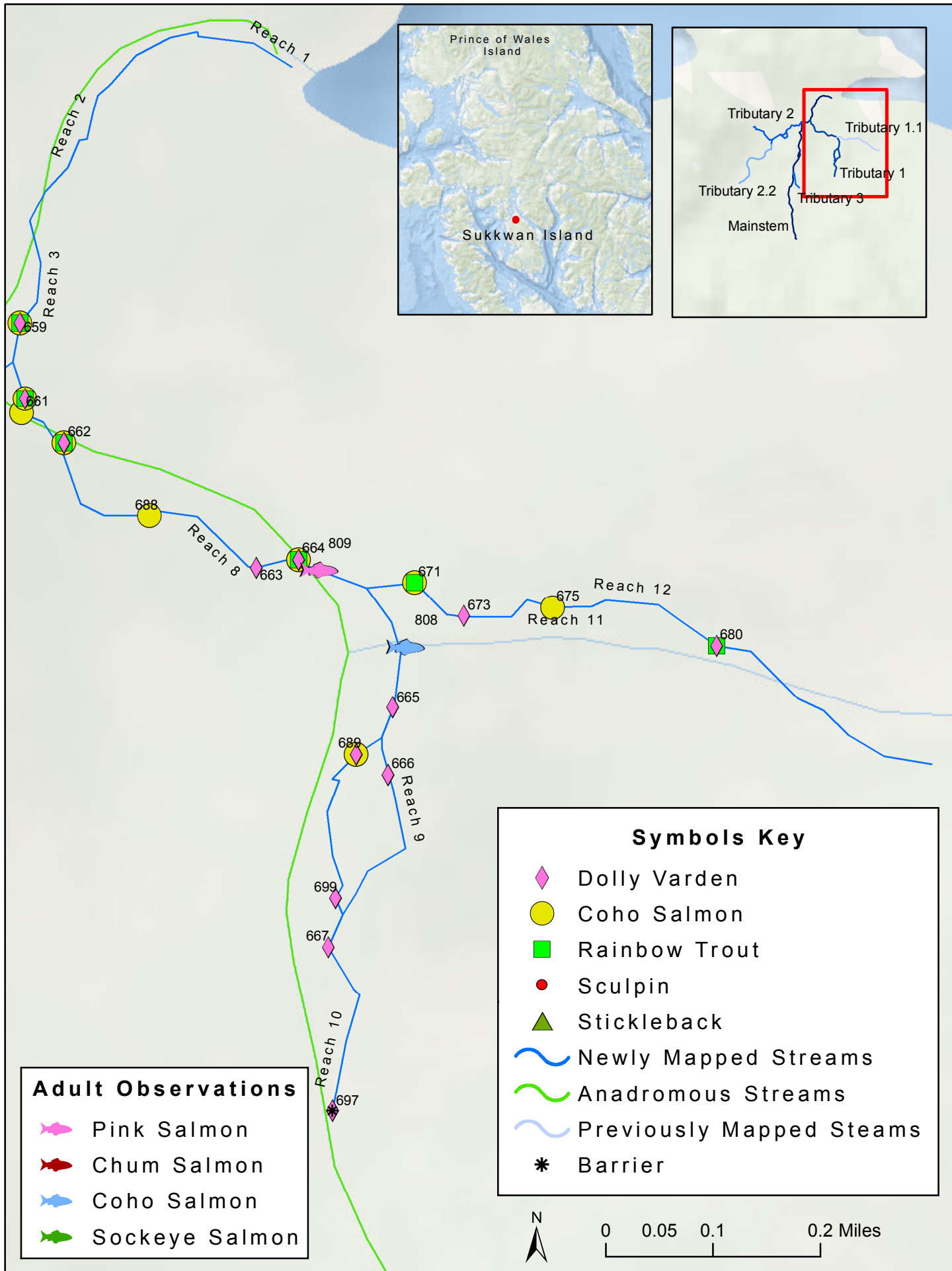
Reach 8 was channel typed as a small low gradient contained channel (LCS). Reaches 9 and 10 on Tributary 10 and Reach 11 on Tributary 1.1 were channel typed as small moderate gradient mixed control channel (MMS) and Reach 12 on Tributary 1.1 was low incision high gradient channel in hills and muskegs (HCLw).

The stream survey crew did not document the upper extent of fish habitat on Tributary 1 or Tributary 1.1. On Reach 10, at the end of Tributary 1, there was a barrier (GPS location 697), however there were Dolly Varden trapped above (see Photo 1). The last anadromous fish in Tributary 1 was trapped at GPS point 689. The survey crew did not map to the upper extent of fish habitat on Tributary 1.1 because it was the end of the day and too far to get back into the next day. Coho salmon were found in traps at GPS location 675 and rainbow trout were found at GPS location 680.



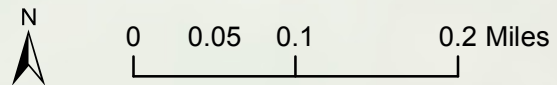
Photo 1: Trap Creek Tributary 1 barrier, that does not represent the upper extent of fish habitat.

# Trap Creek: Tributary 1



Adult Observations	
	Pink Salmon
	Chum Salmon
	Coho Salmon
	Sockeye Salmon

Symbols Key	
	Dolly Varden
	Coho Salmon
	Rainbow Trout
	Sculpin
	Stickleback
	Newly Mapped Streams
	Previously Mapped Steams
	Barrier



## Fish caught in Tributary 1 of Trap Creek

**ADF&G permit no. SF2016-167**

**Summary report of fish collection activity.**

**The area biologist was contacted on: TIME/DATE: unknown**

Location ID (optional)	Latitude	Longitude	Datum	Coordinate determination method	Name of water body	Date	Observer name (first name, middle initial, last name)	Fish collection method	Species	Life stage	Length (mm)	Disposition (1)	
											No estimates/ranges		Length method
661	55.17197	-132.83149	WGS84	GPS	Trap Creek	5/26/2016	Tony Sanderson	Minnow Trap	coho salmon	Juvenile	72	Fork	measured and released
661	55.17197	-132.83149	WGS84	GPS	Trap Creek	5/26/2016	Tony Sanderson	Minnow Trap	coho salmon	Juvenile	50	Fork	measured and released
661	55.17197	-132.83149	WGS84	GPS	Trap Creek	5/26/2016	Tony Sanderson	Minnow Trap	coho salmon	Juvenile	70	Fork	measured and released
661	55.17197	-132.83149	WGS84	GPS	Trap Creek	5/26/2016	Tony Sanderson	Minnow Trap	coho salmon	Juvenile	45	Fork	measured and released
662	55.17174	-132.83093	WGS84	GPS	Trap Creek	5/26/2016	Tony Sanderson	Minnow Trap	coho salmon	Juvenile	74	Fork	measured and released
662	55.17174	-132.83093	WGS84	GPS	Trap Creek	5/26/2016	Tony Sanderson	Minnow Trap	Dolly Varden	Juvenile	90	Fork	measured and released
662	55.17174	-132.83093	WGS84	GPS	Trap Creek	5/26/2016	Tony Sanderson	Minnow Trap	Dolly Varden	Juvenile	92	Fork	measured and released
662	55.17174	-132.83093	WGS84	GPS	Trap Creek	5/26/2016	Tony Sanderson	Minnow Trap	Dolly Varden	Juvenile	88	Fork	measured and released
662	55.17174	-132.83093	WGS84	GPS	Trap Creek	5/26/2016	Tony Sanderson	Minnow Trap	rainbow trout	Juvenile	84	Fork	measured and released
662	55.17174	-132.83093	WGS84	GPS	Trap Creek	5/26/2016	Tony Sanderson	Minnow Trap	rainbow trout	Juvenile	72	Fork	measured and released
662	55.17174	-132.83093	WGS84	GPS	Trap Creek	5/26/2016	Tony Sanderson	Minnow Trap	coho salmon	Juvenile	70	Fork	measured and released
662	55.17174	-132.83093	WGS84	GPS	Trap Creek	5/26/2016	Tony Sanderson	Minnow Trap	rainbow trout	Juvenile	75	Fork	measured and released
662	55.17174	-132.83093	WGS84	GPS	Trap Creek	5/26/2016	Tony Sanderson	Minnow Trap	coho salmon	Juvenile	67	Fork	measured and released
662	55.17174	-132.83093	WGS84	GPS	Trap Creek	5/26/2016	Tony Sanderson	Minnow Trap	Dolly Varden	Juvenile	87	Fork	measured and released
662	55.17174	-132.83093	WGS84	GPS	Trap Creek	5/26/2016	Tony Sanderson	Minnow Trap	Dolly Varden	Juvenile	90	Fork	measured and released
662	55.17174	-132.83093	WGS84	GPS	Trap Creek	5/26/2016	Tony Sanderson	Minnow Trap	Dolly Varden	Juvenile	68	Fork	measured and released
662	55.17174	-132.83093	WGS84	GPS	Trap Creek	5/26/2016	Tony Sanderson	Minnow Trap	Dolly Varden	Juvenile	75	Fork	measured and released
662	55.17174	-132.83093	WGS84	GPS	Trap Creek	5/26/2016	Tony Sanderson	Minnow Trap	Dolly Varden	Juvenile	81	Fork	measured and released
662	55.17174	-132.83093	WGS84	GPS	Trap Creek	5/26/2016	Tony Sanderson	Minnow Trap	Dolly Varden	Juvenile	77	Fork	measured and released
662	55.17174	-132.83093	WGS84	GPS	Trap Creek	5/26/2016	Tony Sanderson	Minnow Trap	Dolly Varden	Juvenile	85	Fork	measured and released
662	55.17174	-132.83093	WGS84	GPS	Trap Creek	5/26/2016	Tony Sanderson	Minnow Trap	Dolly Varden	Juvenile	88	Fork	measured and released
662	55.17174	-132.83093	WGS84	GPS	Trap Creek	5/26/2016	Tony Sanderson	Minnow Trap	Dolly Varden	Juvenile	76	Fork	measured and released
662	55.17174	-132.83093	WGS84	GPS	Trap Creek	5/26/2016	Tony Sanderson	Minnow Trap	Dolly Varden	Juvenile	79	Fork	measured and released
662	55.17174	-132.83093	WGS84	GPS	Trap Creek	5/26/2016	Tony Sanderson	Minnow Trap	Dolly Varden	Juvenile	76	Fork	measured and released
662	55.17174	-132.83093	WGS84	GPS	Trap Creek	5/26/2016	Tony Sanderson	Minnow Trap	Dolly Varden	Juvenile	80	Fork	measured and released
662	55.17174	-132.83093	WGS84	GPS	Trap Creek	5/26/2016	Tony Sanderson	Minnow Trap	Dolly Varden	Juvenile	82	Fork	measured and released
663	55.17078	-132.82834	WGS84	GPS	Trap Creek	5/26/2016	Tony Sanderson	Minnow Trap	Dolly Varden	Juvenile	80	Fork	measured and released
663	55.17078	-132.82834	WGS84	GPS	Trap Creek	5/26/2016	Tony Sanderson	Minnow Trap	Dolly Varden	Juvenile	72	Fork	measured and released
663	55.17078	-132.82834	WGS84	GPS	Trap Creek	5/26/2016	Tony Sanderson	Minnow Trap	Dolly Varden	Juvenile	40	Fork	measured and released
663	55.17078	-132.82834	WGS84	GPS	Trap Creek	5/26/2016	Tony Sanderson	Minnow Trap	Dolly Varden	Juvenile	41	Fork	measured and released
664	55.17084	-132.82777	WGS84	GPS	Trap Creek	5/26/2016	Tony Sanderson	Minnow Trap	Dolly Varden	Juvenile	150	Fork	measured and released
664	55.17084	-132.82777	WGS84	GPS	Trap Creek	5/26/2016	Tony Sanderson	Minnow Trap	Dolly Varden	Juvenile	162	Fork	measured and released
664	55.17084	-132.82777	WGS84	GPS	Trap Creek	5/26/2016	Tony Sanderson	Minnow Trap	Dolly Varden	Juvenile	118	Fork	measured and released
664	55.17084	-132.82777	WGS84	GPS	Trap Creek	5/26/2016	Tony Sanderson	Minnow Trap	Dolly Varden	Juvenile	95	Fork	measured and released
664	55.17084	-132.82777	WGS84	GPS	Trap Creek	5/26/2016	Tony Sanderson	Minnow Trap	Dolly Varden	Juvenile	107	Fork	measured and released
664	55.17084	-132.82777	WGS84	GPS	Trap Creek	5/26/2016	Tony Sanderson	Minnow Trap	Dolly Varden	Juvenile	102	Fork	measured and released
664	55.17084	-132.82777	WGS84	GPS	Trap Creek	5/26/2016	Tony Sanderson	Minnow Trap	Dolly Varden	Juvenile	107	Fork	measured and released

ADF&G permit no. SF2016-167

Summary report of fish collection activity.

The area biologist was contacted on: **TIME/DATE: unknown**

Location ID (optional)	Latitude	Longitude	Datum	Coordinate determination method	Name of water body	Date	Observer name (first name, middle initial, last name)	Fish collection method	Species	Life stage	Length (mm) No estimates/ranges	Length method	Disposition (1)
664	55.17084	-132.82777	WGS84	GPS	Trap Creek	5/26/2016	Tony Sanderson	Minnow Trap	coho salmon	Juvenile	66	Fork	measured and released
664	55.17084	-132.82777	WGS84	GPS	Trap Creek	5/26/2016	Tony Sanderson	Minnow Trap	coho salmon	Juvenile	74	Fork	measured and released
664	55.17084	-132.82777	WGS84	GPS	Trap Creek	5/26/2016	Tony Sanderson	Minnow Trap	rainbow trout	Juvenile	67	Fork	measured and released
664	55.17084	-132.82777	WGS84	GPS	Trap Creek	5/26/2016	Tony Sanderson	Minnow Trap	Dolly Varden	Juvenile	73	Fork	measured and released
664	55.17084	-132.82777	WGS84	GPS	Trap Creek	5/26/2016	Tony Sanderson	Minnow Trap	coho salmon	Juvenile	71	Fork	measured and released
664	55.17084	-132.82777	WGS84	GPS	Trap Creek	5/26/2016	Tony Sanderson	Minnow Trap	rainbow trout	Juvenile	64	Fork	measured and released
664	55.17084	-132.82777	WGS84	GPS	Trap Creek	5/26/2016	Tony Sanderson	Minnow Trap	Dolly Varden	Juvenile	66	Fork	measured and released
664	55.17084	-132.82777	WGS84	GPS	Trap Creek	5/26/2016	Tony Sanderson	Minnow Trap	rainbow trout	Juvenile	71	Fork	measured and released
664	55.17084	-132.82777	WGS84	GPS	Trap Creek	5/26/2016	Tony Sanderson	Minnow Trap	Dolly Varden	Juvenile	77	Fork	measured and released
664	55.17084	-132.82777	WGS84	GPS	Trap Creek	5/26/2016	Tony Sanderson	Minnow Trap	Dolly Varden	Juvenile	70	Fork	measured and released
664	55.17084	-132.82777	WGS84	GPS	Trap Creek	5/26/2016	Tony Sanderson	Minnow Trap	Dolly Varden	Juvenile	76	Fork	measured and released
664	55.17084	-132.82777	WGS84	GPS	Trap Creek	5/26/2016	Tony Sanderson	Minnow Trap	Dolly Varden	Juvenile	93	Fork	measured and released
664	55.17084	-132.82777	WGS84	GPS	Trap Creek	5/26/2016	Tony Sanderson	Minnow Trap	Dolly Varden	Juvenile	72	Fork	measured and released
664	55.17084	-132.82777	WGS84	GPS	Trap Creek	5/26/2016	Tony Sanderson	Minnow Trap	Dolly Varden	Juvenile	92	Fork	measured and released
664	55.17084	-132.82777	WGS84	GPS	Trap Creek	5/26/2016	Tony Sanderson	Minnow Trap	rainbow trout	Juvenile	71	Fork	measured and released
664	55.17084	-132.82777	WGS84	GPS	Trap Creek	5/26/2016	Tony Sanderson	Minnow Trap	coho salmon	Juvenile	67	Fork	measured and released
664	55.17084	-132.82777	WGS84	GPS	Trap Creek	5/26/2016	Tony Sanderson	Minnow Trap	coho salmon	Juvenile	77	Fork	measured and released
664	55.17084	-132.82777	WGS84	GPS	Trap Creek	5/26/2016	Tony Sanderson	Minnow Trap	rainbow trout	Juvenile	74	Fork	measured and released
664	55.17084	-132.82777	WGS84	GPS	Trap Creek	5/26/2016	Tony Sanderson	Minnow Trap	rainbow trout	Juvenile	73	Fork	measured and released
664	55.17084	-132.82777	WGS84	GPS	Trap Creek	5/26/2016	Tony Sanderson	Minnow Trap	coho salmon	Juvenile	77	Fork	measured and released
664	55.17084	-132.82777	WGS84	GPS	Trap Creek	5/26/2016	Tony Sanderson	Minnow Trap	Dolly Varden	Juvenile	85	Fork	measured and released
664	55.17084	-132.82777	WGS84	GPS	Trap Creek	5/26/2016	Tony Sanderson	Minnow Trap	rainbow trout	Juvenile	67	Fork	measured and released
664	55.17084	-132.82777	WGS84	GPS	Trap Creek	5/26/2016	Tony Sanderson	Minnow Trap	Dolly Varden	Juvenile	70	Fork	measured and released
664	55.17084	-132.82777	WGS84	GPS	Trap Creek	5/26/2016	Tony Sanderson	Minnow Trap	rainbow trout	Juvenile	73	Fork	measured and released
664	55.17084	-132.82777	WGS84	GPS	Trap Creek	5/26/2016	Tony Sanderson	Minnow Trap	Dolly Varden	Juvenile	73	Fork	measured and released
665	55.1697	-132.8265	WGS84	GPS	Trap Creek	5/26/2016	Tony Sanderson	Minnow Trap	Dolly Varden	Juvenile	72	Fork	measured and released
665	55.1697	-132.8265	WGS84	GPS	Trap Creek	5/26/2016	Tony Sanderson	Minnow Trap	Dolly Varden	Juvenile	82	Fork	measured and released
665	55.1697	-132.8265	WGS84	GPS	Trap Creek	5/26/2016	Tony Sanderson	Minnow Trap	Dolly Varden	Juvenile	90	Fork	measured and released
665	55.1697	-132.8265	WGS84	GPS	Trap Creek	5/26/2016	Tony Sanderson	Minnow Trap	Dolly Varden	Juvenile	75	Fork	measured and released
666	55.169184	-132.826564	WGS84	GPS	Trap Creek	5/26/2016	Tony Sanderson	Minnow Trap	Dolly Varden	Juvenile	100	Fork	measured and released
666	55.169184	-132.826564	WGS84	GPS	Trap Creek	5/26/2016	Tony Sanderson	Minnow Trap	Dolly Varden	Juvenile	100	Fork	measured and released
666	55.169184	-132.826564	WGS84	GPS	Trap Creek	5/26/2016	Tony Sanderson	Minnow Trap	Dolly Varden	Juvenile	78	Fork	measured and released
666	55.169184	-132.826564	WGS84	GPS	Trap Creek	5/26/2016	Tony Sanderson	Minnow Trap	Dolly Varden	Juvenile	59	Fork	measured and released
666	55.169184	-132.826564	WGS84	GPS	Trap Creek	5/26/2016	Tony Sanderson	Minnow Trap	Dolly Varden	Juvenile	95	Fork	measured and released
666	55.169184	-132.826564	WGS84	GPS	Trap Creek	5/26/2016	Tony Sanderson	Minnow Trap	Dolly Varden	Juvenile	115	Fork	measured and released
667	55.167853	-132.827369	WGS84	GPS	Trap Creek	5/26/2016	Tony Sanderson	Minnow Trap	Dolly Varden	Juvenile	66	Fork	measured and released
688	55.17118	-132.82977	WGS84	GPS	Trap Creek	6/8/2016	Tony Sanderson	Minnow Trap	coho salmon	Juvenile	58	Fork	measured and released
689	55.16934	-132.82699	WGS84	GPS	Trap Creek	6/8/2016	Tony Sanderson	Minnow Trap	Dolly Varden	Juvenile	98	Fork	measured and released

ADF&G permit no. SF2016-167

Summary report of fish collection activity.

The area biologist was contacted on: **TIME/DATE: unknown**

Location ID (optional)	Latitude	Longitude	Datum	Coordinate determination method	Name of water body	Date	Observer name (first name, middle initial, last name)	Fish collection method	Species	Life stage	Length (mm)	Disposition (1)	
											No estimates/ranges		Length method
689	55.16934	-132.82699	WGS84	GPS	Trap Creek	6/8/2016	Tony Sanderson	Minnow Trap	Dolly Varden	Juvenile	102	Fork	measured and released
689	55.16934	-132.82699	WGS84	GPS	Trap Creek	6/8/2016	Tony Sanderson	Minnow Trap	coho salmon	Juvenile	87	Fork	measured and released
689	55.16934	-132.82699	WGS84	GPS	Trap Creek	6/8/2016	Tony Sanderson	Minnow Trap	coho salmon	Juvenile	75	Fork	measured and released
689	55.16934	-132.82699	WGS84	GPS	Trap Creek	6/8/2016	Tony Sanderson	Minnow Trap	coho salmon	Juvenile	52	Fork	measured and released
689	55.16934	-132.82699	WGS84	GPS	Trap Creek	6/8/2016	Tony Sanderson	Minnow Trap	coho salmon	Juvenile	86	Fork	measured and released
689	55.16934	-132.82699	WGS84	GPS	Trap Creek	6/8/2016	Tony Sanderson	Minnow Trap	Dolly Varden	Juvenile	90	Fork	measured and released
689	55.16934	-132.82699	WGS84	GPS	Trap Creek	6/8/2016	Tony Sanderson	Minnow Trap	Dolly Varden	Juvenile	66	Fork	measured and released
689	55.16934	-132.82699	WGS84	GPS	Trap Creek	6/8/2016	Tony Sanderson	Minnow Trap	Dolly Varden	Juvenile	70	Fork	measured and released
689	55.16934	-132.82699	WGS84	GPS	Trap Creek	6/8/2016	Tony Sanderson	Minnow Trap	Dolly Varden	Juvenile	74	Fork	measured and released
697	55.16659	-132.82731	WGS84	GPS	Trap Creek	6/8/2016	Tony Sanderson	Minnow Trap	Dolly Varden	Juvenile	68	Fork	measured and released
697	55.16659	-132.82731	WGS84	GPS	Trap Creek	6/8/2016	Tony Sanderson	Minnow Trap	Dolly Varden	Juvenile	103	Fork	measured and released
697	55.16659	-132.82731	WGS84	GPS	Trap Creek	6/8/2016	Tony Sanderson	Minnow Trap	Dolly Varden	Juvenile	38	Fork	measured and released
697	55.16659	-132.82731	WGS84	GPS	Trap Creek	6/8/2016	Tony Sanderson	Minnow Trap	Dolly Varden	Juvenile	35	Fork	measured and released
697	55.16659	-132.82731	WGS84	GPS	Trap Creek	6/8/2016	Tony Sanderson	Minnow Trap	Dolly Varden	Juvenile	80	Fork	measured and released
697	55.16659	-132.82731	WGS84	GPS	Trap Creek	6/8/2016	Tony Sanderson	Minnow Trap	Dolly Varden	Juvenile	82	Fork	measured and released
699	55.16823	-132.82727	WGS84	GPS	Trap Creek	6/8/2016	Tony Sanderson	Minnow Trap	Dolly Varden	Juvenile	105	Fork	measured and released
699	55.16823	-132.82727	WGS84	GPS	Trap Creek	6/8/2016	Tony Sanderson	Minnow Trap	Dolly Varden	Juvenile	92	Fork	measured and released
699	55.16823	-132.82727	WGS84	GPS	Trap Creek	6/8/2016	Tony Sanderson	Minnow Trap	Dolly Varden	Juvenile	41	Fork	measured and released
699	55.16823	-132.82727	WGS84	GPS	Trap Creek	6/8/2016	Tony Sanderson	Minnow Trap	Dolly Varden	Juvenile	94	Fork	measured and released

## Fish caught in Tributary 1.1 of Trap Creek

**ADF&G permit no. SF2016-167**

**Summary report of fish collection activity.**

**The area biologist was contacted on: TIME/DATE: unknown**

Location ID (optional)	Latitude	Longitude	Datum	Coordinate determination method	Name of water body	Date	Observer name (first name, middle initial, last name)	Fish collection method	Species	Life stage	Length (mm) No estimates/ranges	Length method	Disposition (1)
671	55.170661	-132.826201	WGS84	GPS	Trap Creek	6/7/2016	Tony Sanderson	Minnow Trap	rainbow trout	Juvenile	70	Fork	measured and released
671	55.170661	-132.826201	WGS84	GPS	Trap Creek	6/7/2016	Tony Sanderson	Minnow Trap	coho salmon	Juvenile	85	Fork	measured and released
671	55.170661	-132.826201	WGS84	GPS	Trap Creek	6/7/2016	Tony Sanderson	Minnow Trap	coho salmon	Juvenile	73	Fork	measured and released
671	55.170661	-132.826201	WGS84	GPS	Trap Creek	6/7/2016	Tony Sanderson	Minnow Trap	coho salmon	Juvenile	80	Fork	measured and released
673	55.170405	-132.825539	WGS84	GPS	Trap Creek	6/7/2016	Tony Sanderson	Minnow Trap	Dolly Varden	Juvenile	83	Fork	measured and released
675	55.170468	-132.824341	WGS84	GPS	Trap Creek	6/7/2016	Tony Sanderson	Minnow Trap	coho salmon	Juvenile	75	Fork	measured and released
675	55.170468	-132.824341	WGS84	GPS	Trap Creek	6/7/2016	Tony Sanderson	Minnow Trap	coho salmon	Juvenile	81	Fork	measured and released
675	55.170468	-132.824341	WGS84	GPS	Trap Creek	6/7/2016	Tony Sanderson	Minnow Trap	coho salmon	Juvenile	70	Fork	measured and released
675	55.170468	-132.824341	WGS84	GPS	Trap Creek	6/7/2016	Tony Sanderson	Minnow Trap	coho salmon	Juvenile	74	Fork	measured and released
680	55.170175	-132.822138	WGS84	GPS	Trap Creek	6/7/2016	Tony Sanderson	Minnow Trap	rainbow trout	Juvenile	138	Fork	measured and released
680	55.170175	-132.822138	WGS84	GPS	Trap Creek	6/7/2016	Tony Sanderson	Minnow Trap	rainbow trout	Juvenile	122	Fork	measured and released
680	55.170175	-132.822138	WGS84	GPS	Trap Creek	6/7/2016	Tony Sanderson	Minnow Trap	Dolly Varden	Juvenile	99	Fork	measured and released

Adult Foot Counts on Trap Creek on August 22, 2017

<b>Watershed</b>	<b>Stream/Tributary</b>	<b>Reach</b>	<b>Date</b>	<b>Suvey end GPS point</b>	<b>Index area</b>	<b>Species</b>	<b>Live/Carcass</b>	<b>Amount</b>	<b>Observer</b>	<b>Wind</b>	<b>Weather</b>	<b>Water</b>	<b>Visibility</b>
Trap Creek	Tributary 1	1-8	8/22/2016	809	Mount	Pink Salmon	Live	200	TS, JP	calm	clear	clear	good
Trap Creek	Tributary 2	1-9	8/22/2016	808	Mount	Chum Salmon	Live	1	TS, JP	calm	clear	clear	good
Trap Creek	Tributary 3	1-9	8/22/2016	808	Mount	Coho Salmon	Live	2	TS, JP	calm	clear	clear	good
Trap Creek	Tributary 4	1-8	8/22/2016	809	In Stream	Pink Salmon	Live	140	TS, JP	calm	clear	clear	good
Trap Creek	Tributary 5	1-9	8/22/2016	808	In Stream	Coho Salmon	Live	20	TS, JP	calm	clear	clear	good
Trap Creek	Tributary 6	1-8	8/22/2016	809	Riparian	Pink Salmon	Carcass	11	TS, JP	calm	clear	clear	good



State of Alaska  
Department of Fish and Game  
Division of Sport Fish

Nomination Form  
Anadromous Waters Catalog

Region Southeast USGS Quad(s) Craig A-3

AWC Number of Water Body 103-25-10700

Name of Water body Trap Creek Tributary 2 and Tributary 2.1  USGS Name  Local Name

Addition  Deletion  Correction  Backup Information

For Office Use

Nomination # _____  Revision Year: _____  Revision to: Atlas _____ Catalog _____ Both _____  Revision Code: _____	_____	_____
	Fisheries Scientist	Date
	Habitat Operations Manager	Date
	AWC Project Biologist	Date
	GIS Analyst	Date

OBSERVATION INFORMATION

Species	Date(s) Observed	Spawning	Rearing	Present	Anadromous
Coho salmon			X	X	<input checked="" type="checkbox"/>
Rainbow trout				X	<input type="checkbox"/>
Dolly Varden char				X	<input type="checkbox"/>
					<input type="checkbox"/>
					<input type="checkbox"/>

**IMPORTANT:** Provide all supporting documentation that this water body is important for the spawning, rearing or migration of anadromous fish, including: number of fish and life stages observed; sampling methods, sampling duration and area sampled; copies of field notes; etc. Attach a copy of a map showing location of mouth and observed upper extent of each species, as well as other information such as: specific stream reaches observed as spawning or rearing habitat; locations, types, and heights of any barriers; etc.

**Comments**

See supplemental information. This package was prepared by Cathy Needham. For questions or additional information contact Cathy Needham at 907-723-4436 or cathy@kaienvironmental.com or Christine Woll at 907-586-8623 or cwooll@tnc.org

Name of Observer (please print): Anthony Christianson

Signature:

Agency: Hydaburg Cooperative Association

Address: P.O. Box 349  
Hydaburg, AK 99922

Date: 5/26/17

This certifies that in my best professional judgment and belief the above information is evidence that this waterbody should be included in or deleted from the Anadromous Waters Catalog.

Signature of Area Biologist: \_\_\_\_\_ Date: \_\_\_\_\_ Revision 11/13

Name of Area Biologist (please print): \_\_\_\_\_

## Supplemental information for Trap Creek Tributary 2 and Tributary 2.1

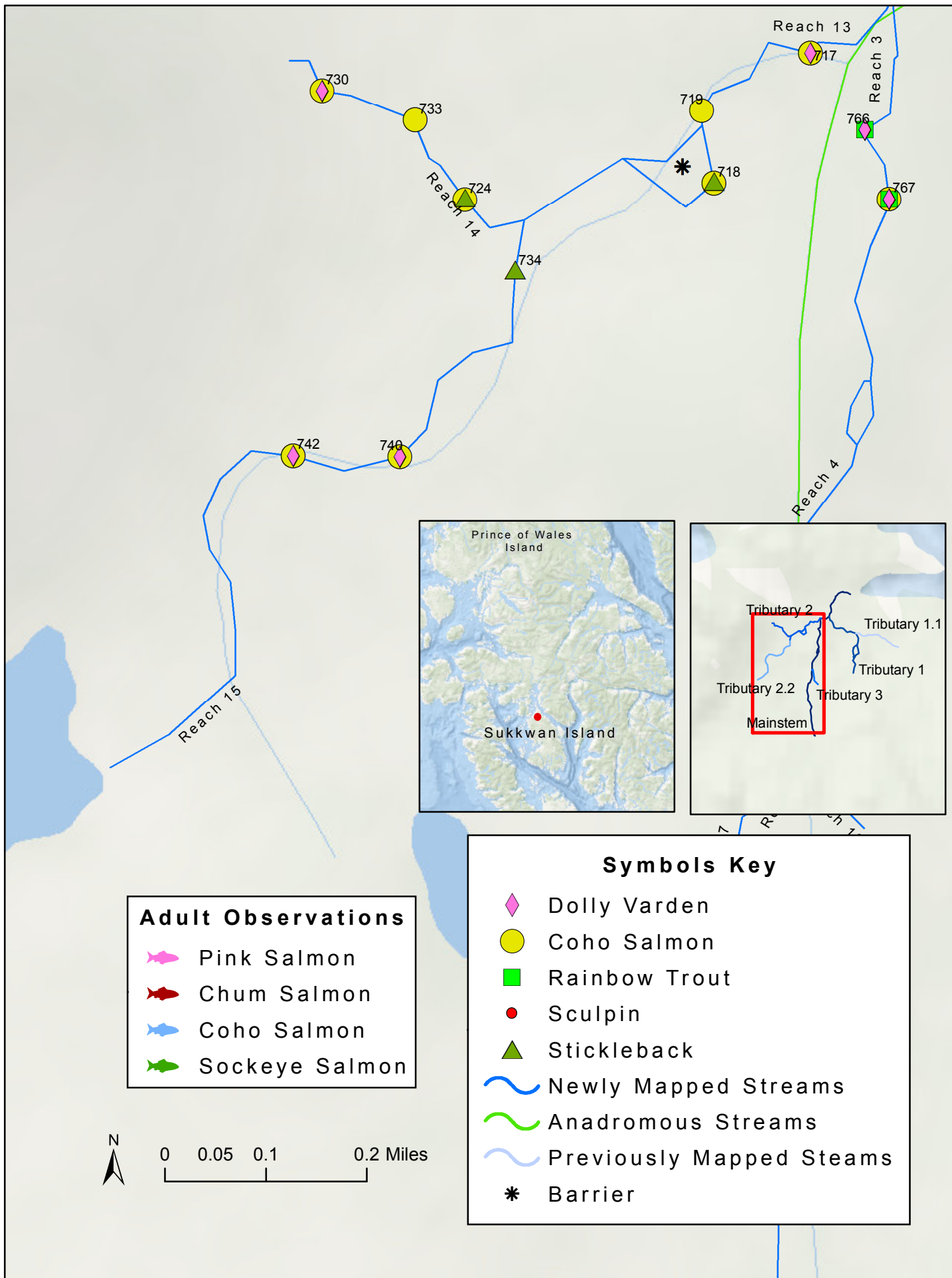
Tributary 2 and Tributary 2.1 of Trap Creek have not been previously recorded in the Anadromous Waters Catalog. This current nomination includes the addition of coho salmon as present and rearing in reaches mapped (see map). Dolly Varden were also present throughout the mapped reaches. An ADFG fish trapping permit datasheet is attached to this nomination packet for further details on fish trapping efforts. No adult surveys were conducted during the project.

Stream mapping and survey data was collected by the Hydaburg Cooperative Association Stream Survey crew for Tributary 2 and Tributary 2.1 on July 7<sup>th</sup>, 2016. Data was taken on three reaches (reach numbers in the tables correspond to a master dataset; see attached figure for locations). Reach 13 and 14 were from Tributary 2 and Reach 15 is in Tributary 2.1 (see map). The stream survey data are in the following table:

	<b>Reach 13</b>	<b>Reach 14</b>	<b>Reach 15</b>
<b>Average stream gradient</b>	0.9	1.7	1.7
<b>Average bankfull width</b>	2.3	1.5	1.9
<b>Average channel bed width</b>	2.4	1.67	2.2
<b>Average incision depth</b>	0.43	0.5	0.54
<b>Bank composition</b>	Organic	Organic	Organic
<b>Dominant substrate</b>	Very course gravel	Organic	Very course gravel
<b>Sub-dominate substrate</b>	Course gravel; medium course gravel	Sand/silt	Course gravel; organic
<b>Large wood count</b>	76	22	64
<b>Key wood count</b>	16	4	5
<b>Macro-pool count</b>	-	14	38

Reach 13 and 15 were channel typed as small low gradient contained channel (LCS) and were both in Tributary 2. Reach 14 was typed as micro placid flow channel (PAO) and constituted Tributary 2.1. In reach 13, a beaver dam was documented with a 2 m barrier height. Coho smolt, Dolly Varden and stickleback were trapped above the barrier. Tributary 2 ended at the outlet of a small lake. The upper extent of fish habitat was not documented, fish were found in Tributary 2 up to GPS point 742. The upper extent of fish habitat in Tributary 2.1 was also not found, surveys ended just above GPS point 730 where coho smolt were trapped. The remainder of the tributary was not mapped due to not having time to get back into the system.

# Trap Creek: Tributary 2

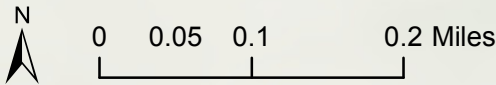


**Adult Observations**

	Pink Salmon
	Chum Salmon
	Coho Salmon
	Sockeye Salmon

**Symbols Key**

	Dolly Varden
	Coho Salmon
	Rainbow Trout
	Sculpin
	Stickleback
	Newly Mapped Streams
	Anadromous Streams
	Previously Mapped Steams
	Barrier



## Fish caught in Tributary 2 of Trap Creek

ADF&G permit no. SF2016-167

Summary report of fish collection activity.

The area biologist was contacted on: TIME/DATE: unknown

Location ID (optional)	Latitude	Longitude	Datum	Coordinate determination method	Name of water body	Date	Observer name (first name, middle initial, last name)	Fish collection method	Species	Life stage	Length (mm) No estimates/ranges	Length method	Disposition (1)
717	55.17175	-132.834384	WGS84	GPS	Trap Creek	7/7/2016	Tony Sanderson	Minnow Trap	Dolly Varden	Juvenile	82	Fork	measured and released
717	55.17175	-132.834384	WGS84	GPS	Trap Creek	7/7/2016	Tony Sanderson	Minnow Trap	coho salmon	Juvenile	54	Fork	measured and released
717	55.17175	-132.834384	WGS84	GPS	Trap Creek	7/7/2016	Tony Sanderson	Minnow Trap	coho salmon	Juvenile	78	Fork	measured and released
717	55.17175	-132.834384	WGS84	GPS	Trap Creek	7/7/2016	Tony Sanderson	Minnow Trap	coho salmon	Juvenile	54	Fork	measured and released
717	55.17175	-132.834384	WGS84	GPS	Trap Creek	7/7/2016	Tony Sanderson	Minnow Trap	coho salmon	Juvenile	3	Fork	measured and released
717	55.17175	-132.834384	WGS84	GPS	Trap Creek	7/7/2016	Tony Sanderson	Minnow Trap	coho salmon	Juvenile	57	Fork	measured and released
717	55.17175	-132.834384	WGS84	GPS	Trap Creek	7/7/2016	Tony Sanderson	Minnow Trap	coho salmon	Juvenile	72	Fork	measured and released
717	55.17175	-132.834384	WGS84	GPS	Trap Creek	7/7/2016	Tony Sanderson	Minnow Trap	coho salmon	Juvenile	57	Fork	measured and released
717	55.17175	-132.834384	WGS84	GPS	Trap Creek	7/7/2016	Tony Sanderson	Minnow Trap	coho salmon	Juvenile	60	Fork	measured and released
717	55.17175	-132.834384	WGS84	GPS	Trap Creek	7/7/2016	Tony Sanderson	Minnow Trap	coho salmon	Juvenile	46	Fork	measured and released
718	55.17069	-132.835763	WGS84	GPS	Trap Creek	7/7/2016	Tony Sanderson	Minnow Trap	coho salmon	Juvenile	77	Fork	measured and released
718	55.17069	-132.835763	WGS84	GPS	Trap Creek	7/7/2016	Tony Sanderson	Minnow Trap	coho salmon	Juvenile	58	Fork	measured and released
718	55.17069	-132.835763	WGS84	GPS	Trap Creek	7/7/2016	Tony Sanderson	Minnow Trap	stickleback-unspecified	Juvenile	53	Fork	measured and released
718	55.17069	-132.835763	WGS84	GPS	Trap Creek	7/7/2016	Tony Sanderson	Minnow Trap	coho salmon	Juvenile	36	Fork	measured and released
718	55.17069	-132.835763	WGS84	GPS	Trap Creek	7/7/2016	Tony Sanderson	Minnow Trap	coho salmon	Juvenile	48	Fork	measured and released
718	55.17069	-132.835763	WGS84	GPS	Trap Creek	7/7/2016	Tony Sanderson	Minnow Trap	coho salmon	Juvenile	54	Fork	measured and released
718	55.17069	-132.835763	WGS84	GPS	Trap Creek	7/7/2016	Tony Sanderson	Minnow Trap	coho salmon	Juvenile	43	Fork	measured and released
719	55.17128	-132.83594	WGS84	GPS	Trap Creek	7/7/2016	Tony Sanderson	Minnow Trap	coho salmon	Juvenile	80	Fork	measured and released
719	55.17128	-132.83594	WGS84	GPS	Trap Creek	7/7/2016	Tony Sanderson	Minnow Trap	coho salmon	Juvenile	53	Fork	measured and released
719	55.17128	-132.83594	WGS84	GPS	Trap Creek	7/7/2016	Tony Sanderson	Minnow Trap	coho salmon	Juvenile	45	Fork	measured and released
734	55.16997	-132.83861	WGS84	GPS	Trap Creek	7/7/2016	Tony Sanderson	Minnow Trap	stickleback-unspecified	Juvenile	31	Fork	measured and released
734	55.16997	-132.83861	WGS84	GPS	Trap Creek	7/7/2016	Tony Sanderson	Minnow Trap	stickleback-unspecified	Juvenile	30	Fork	measured and released
734	55.16997	-132.83861	WGS84	GPS	Trap Creek	7/7/2016	Tony Sanderson	Minnow Trap	stickleback-unspecified	Juvenile	30	Fork	measured and released
734	55.16997	-132.83861	WGS84	GPS	Trap Creek	7/7/2016	Tony Sanderson	Minnow Trap	stickleback-unspecified	Juvenile	32	Fork	measured and released
740	55.16845	-132.840262	WGS84	GPS	Trap Creek	7/7/2016	Tony Sanderson	Minnow Trap	coho salmon	Juvenile	50	Fork	measured and released
740	55.16845	-132.840262	WGS84	GPS	Trap Creek	7/7/2016	Tony Sanderson	Minnow Trap	Dolly Varden	Juvenile	70	Fork	measured and released
740	55.16845	-132.840262	WGS84	GPS	Trap Creek	7/7/2016	Tony Sanderson	Minnow Trap	Dolly Varden	Juvenile	74	Fork	measured and released
740	55.16845	-132.840262	WGS84	GPS	Trap Creek	7/7/2016	Tony Sanderson	Minnow Trap	coho salmon	Juvenile	45	Fork	measured and released
740	55.16845	-132.840262	WGS84	GPS	Trap Creek	7/7/2016	Tony Sanderson	Minnow Trap	coho salmon	Juvenile	43	Fork	measured and released
742	55.16846	-132.841787	WGS84	GPS	Trap Creek	7/7/2016	Tony Sanderson	Minnow Trap	coho salmon	Juvenile	54	Fork	measured and released
742	55.16846	-132.841787	WGS84	GPS	Trap Creek	7/7/2016	Tony Sanderson	Minnow Trap	coho salmon	Juvenile	72	Fork	measured and released
742	55.16846	-132.841787	WGS84	GPS	Trap Creek	7/7/2016	Tony Sanderson	Minnow Trap	coho salmon	Juvenile	78	Fork	measured and released
742	55.16846	-132.841787	WGS84	GPS	Trap Creek	7/7/2016	Tony Sanderson	Minnow Trap	coho salmon	Juvenile	75	Fork	measured and released
742	55.16846	-132.841787	WGS84	GPS	Trap Creek	7/7/2016	Tony Sanderson	Minnow Trap	coho salmon	Juvenile	77	Fork	measured and released
742	55.16846	-132.841787	WGS84	GPS	Trap Creek	7/7/2016	Tony Sanderson	Minnow Trap	Dolly Varden	Juvenile	95	Fork	measured and released
742	55.16846	-132.841787	WGS84	GPS	Trap Creek	7/7/2016	Tony Sanderson	Minnow Trap	coho salmon	Juvenile	47	Fork	measured and released
742	55.16846	-132.841787	WGS84	GPS	Trap Creek	7/7/2016	Tony Sanderson	Minnow Trap	Dolly Varden	Juvenile	62	Fork	measured and released
742	55.16846	-132.841787	WGS84	GPS	Trap Creek	7/7/2016	Tony Sanderson	Minnow Trap	coho salmon	Juvenile	50	Fork	measured and released
742	55.16846	-132.841787	WGS84	GPS	Trap Creek	7/7/2016	Tony Sanderson	Minnow Trap	coho salmon	Juvenile	47	Fork	measured and released
742	55.16846	-132.841787	WGS84	GPS	Trap Creek	7/7/2016	Tony Sanderson	Minnow Trap	coho salmon	Juvenile	35	Fork	measured and released
742	55.16846	-132.841787	WGS84	GPS	Trap Creek	7/7/2016	Tony Sanderson	Minnow Trap	coho salmon	Juvenile	49	Fork	measured and released
742	55.16846	-132.841787	WGS84	GPS	Trap Creek	7/7/2016	Tony Sanderson	Minnow Trap	coho salmon	Juvenile	53	Fork	measured and released
742	55.16846	-132.841787	WGS84	GPS	Trap Creek	7/7/2016	Tony Sanderson	Minnow Trap	coho salmon	Juvenile	7	Fork	measured and released
742	55.16846	-132.841787	WGS84	GPS	Trap Creek	7/7/2016	Tony Sanderson	Minnow Trap	coho salmon	Juvenile	48	Fork	measured and released

## Fish caught in Tributary 2.1 of Trap Creek

**ADF&G permit no. SF2016-167**

**Summary report of fish collection activity.**

**The area biologist was contacted on: TIME/DATE; unknown**

Location ID (optional)	Latitude	Longitude	Datum	Coordinate determination method	Name of water body	Date	Observer name (first name, middle initial, last name)	Fish collection method	Species	Life stage	Length (mm) No estimates/ranges	Length method	Disposition (1)
724	55.17055	-132.83933	WGS84	GPS	Trap Creek	7/7/2016	Tony Sanderson	Minnow Trap	coho salmon	Juvenile	54	Fork	measured and released
724	55.17055	-132.83933	WGS84	GPS	Trap Creek	7/7/2016	Tony Sanderson	Minnow Trap	stickleback-unspecified	Juvenile	36	Fork	measured and released
724	55.17055	-132.83933	WGS84	GPS	Trap Creek	7/7/2016	Tony Sanderson	Minnow Trap	coho salmon	Juvenile	50	Fork	measured and released
733	55.1712	-132.84004	WGS84	GPS	Trap Creek	7/7/2016	Tony Sanderson	Minnow Trap	coho salmon	Juvenile	69	Fork	measured and released
733	55.1712	-132.84004	WGS84	GPS	Trap Creek	7/7/2016	Tony Sanderson	Minnow Trap	coho salmon	Juvenile	55	Fork	measured and released
733	55.1712	-132.84004	WGS84	GPS	Trap Creek	7/7/2016	Tony Sanderson	Minnow Trap	coho salmon	Juvenile	76	Fork	measured and released
733	55.1712	-132.84004	WGS84	GPS	Trap Creek	7/7/2016	Tony Sanderson	Minnow Trap	coho salmon	Juvenile	51	Fork	measured and released
733	55.1712	-132.84004	WGS84	GPS	Trap Creek	7/7/2016	Tony Sanderson	Minnow Trap	coho salmon	Juvenile	58	Fork	measured and released
733	55.1712	-132.84004	WGS84	GPS	Trap Creek	7/7/2016	Tony Sanderson	Minnow Trap	coho salmon	Juvenile	56	Fork	measured and released
730	55.17144	-132.84137	WGS84	GPS	Trap Creek	7/7/2016	Tony Sanderson	Minnow Trap	Dolly Varden	Juvenile	103	Fork	measured and released
730	55.17144	-132.84137	WGS84	GPS	Trap Creek	7/7/2016	Tony Sanderson	Minnow Trap	Dolly Varden	Juvenile	92	Fork	measured and released
730	55.17144	-132.84137	WGS84	GPS	Trap Creek	7/7/2016	Tony Sanderson	Minnow Trap	Dolly Varden	Juvenile	74	Fork	measured and released
730	55.17144	-132.84137	WGS84	GPS	Trap Creek	7/7/2016	Tony Sanderson	Minnow Trap	coho salmon	Juvenile	58	Fork	measured and released
730	55.17144	-132.84137	WGS84	GPS	Trap Creek	7/7/2016	Tony Sanderson	Minnow Trap	Dolly Varden	Juvenile	77	Fork	measured and released
730	55.17144	-132.84137	WGS84	GPS	Trap Creek	7/7/2016	Tony Sanderson	Minnow Trap	Dolly Varden	Juvenile	57	Fork	measured and released
730	55.17144	-132.84137	WGS84	GPS	Trap Creek	7/7/2016	Tony Sanderson	Minnow Trap	coho salmon	Juvenile	46	Fork	measured and released



State of Alaska  
Department of Fish and Game  
Division of Sport Fish

Nomination Form  
Anadromous Waters Catalog

Region Southeast USGS Quad(s) Craig A-3

AWC Number of Water Body 103-25-10700

Name of Water body Trap Creek Mainstem and Tributary 3  USGS Name  Local Name

Addition  Deletion  Correction  Backup Information

For Office Use

Nomination # _____	_____	_____
Revision Year: _____	Fisheries Scientist	Date _____
Revision to: Atlas _____ Catalog _____	Habitat Operations Manager	Date _____
Both _____	AWC Project Biologist	Date _____
Revision Code: _____	GIS Analyst	Date _____

OBSERVATION INFORMATION

Species	Date(s) Observed	Spawning	Rearing	Present	Anadromous
Coho salmon			X	X	<input checked="" type="checkbox"/>
Rainbow trout				X	<input type="checkbox"/>
Dolly Varden char				X	<input type="checkbox"/>
					<input type="checkbox"/>
					<input type="checkbox"/>

**IMPORTANT:** Provide all supporting documentation that this water body is important for the spawning, rearing or migration of anadromous fish, including: number of fish and life stages observed; sampling methods, sampling duration and area sampled; copies of field notes; etc. Attach a copy of a map showing location of mouth and observed upper extent of each species, as well as other information such as: specific stream reaches observed as spawning or rearing habitat; locations, types, and heights of any barriers; etc.

**Comments**

See supplemental information. This package was prepared by Cathy Needham. For questions or additional information contact Cathy Needham at 907-723-4436 or cathy@kaienvironmental.com or Christine Woll at 907-586-8623 or cwooll@tnc.org

Name of Observer (please print): Anthony Christianson  
 Signature: *Anthony Christianson* Date: 5/26/17  
 Agency: Hydaburg Cooperative Association  
 Address: P.O. Box 349  
Hydaburg, AK 99922

This certifies that in my best professional judgment and belief the above information is evidence that this waterbody should be included in or deleted from the Anadromous Waters Catalog.

Signature of Area Biologist: \_\_\_\_\_ Date: \_\_\_\_\_ Revision 11/13  
 Name of Area Biologist (please print): \_\_\_\_\_

### Supplemental information for Trap Creek Mainstem and Tributary 3

The mainstem of Trap Creek is currently listed in the Anadromous Waters Catalog (103-25-10700 and 103-25-10700-2005). The listing includes coho salmon present, chum salmon spawning and pink salmon present. This current nomination includes the extension of the mainstem to where anadromous fish were trapped in 2016, as well as the addition of Tributary 3 for coho salmon present and rearing (see maps). It is also noted Dolly Varden and rainbow trout were also present in traps set in the stream. An ADFG fish trapping permit datasheet is attached to this nomination packet for further details on fish trapping efforts.

Stream mapping and survey data was collected by the Hydaburg Cooperative Association Stream Survey crew for Trap Creek mainstem on May 24<sup>th</sup> and July 14<sup>th</sup>, 2017. Data was collected on Tributary 3 on July 14, 2017. Data was taken on five reaches (reach numbers in the tables correspond to a master dataset; see attached figures for locations). The stream survey data are in the following table:

	<b>Reach 1</b>	<b>Reach 1</b>	<b>Reach 3</b>	<b>Reach 4</b>
<b>Average stream gradient</b>	3.1	1.7	1.3	2.2
<b>Average bankfull width</b>	11.2	7.9	6.1	6.9
<b>Average channel bed width</b>	13.4	10.2	8.2	6.4
<b>Average incision depth</b>	0.93	0.95	0.62	0.77
<b>Bank composition</b>	Bedrock	Mixed	Mixed	mixed
<b>Dominant substrate</b>	Bedrock	Bedrock	Very course gravel	Very course gravel
<b>Sub-dominate substrate</b>	Small cobble; large cobble	Small cobble; large cobble	Small cobble; course gravel	Small cobble; course gravel
<b>Large wood count</b>	37	30	137	109
<b>Key wood count</b>	2	1	26	26
<b>Macro-pool count</b>	7	7	42	42

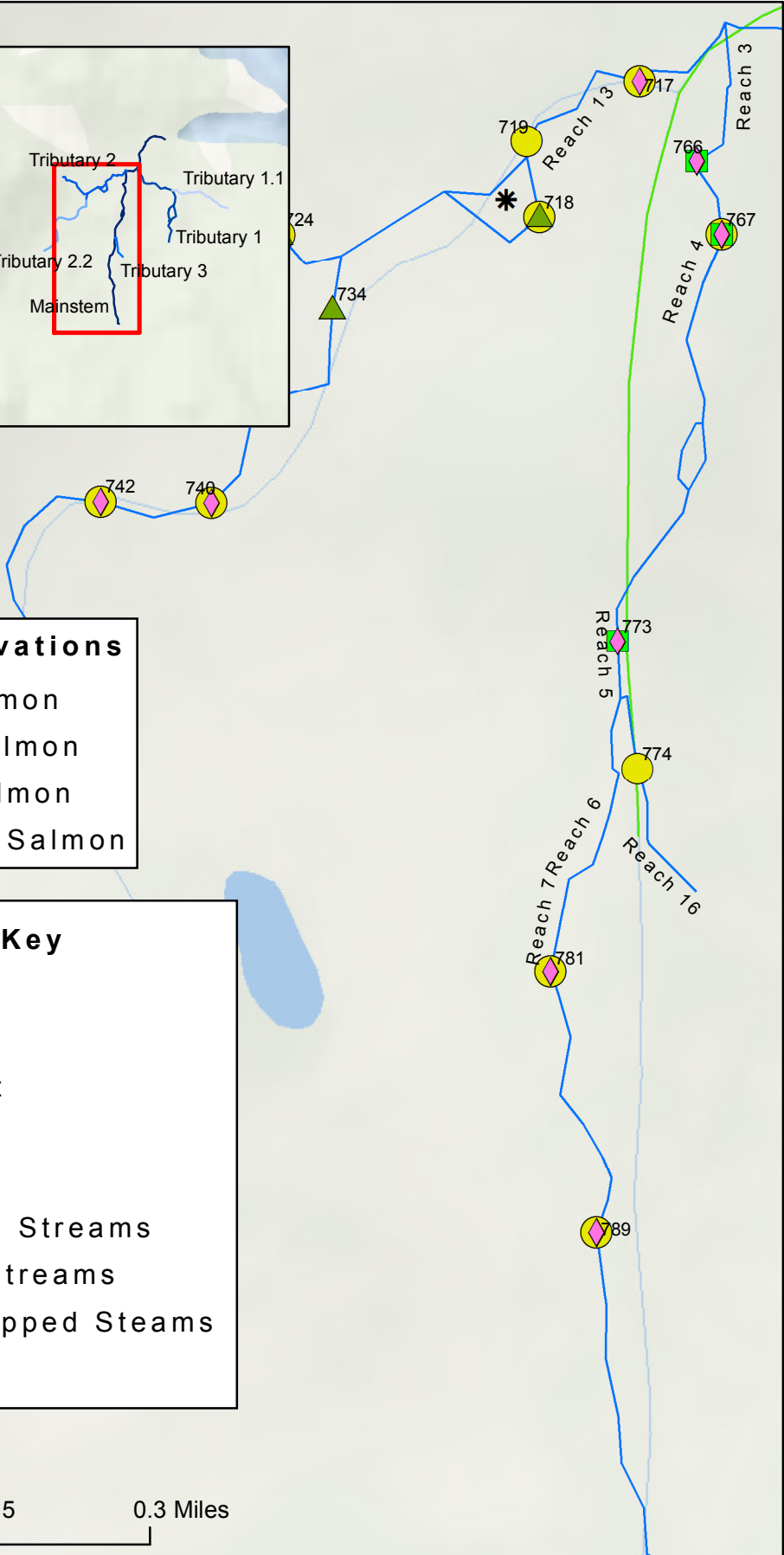
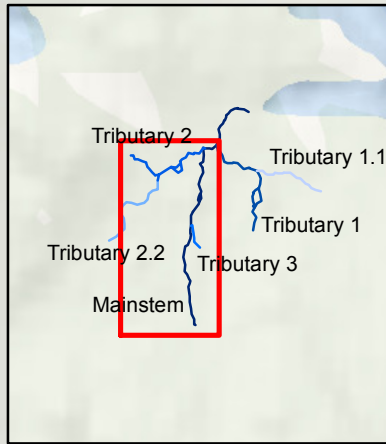
	<b>Reach 5</b>	<b>Reach 6</b>	<b>Reach 7</b>	<b>Reach 16</b>
<b>Average stream gradient</b>	2.2	2.2	4.3	1.3
<b>Average bankfull width</b>	6.6	4.3	6.7	1.3
<b>Average channel bed width</b>	6	3.9	5.8	1.9
<b>Average incision depth</b>	0.45	0.57	0.45	0.43
<b>Bank composition</b>	Mixed	Alluvium	Mixed	mixed
<b>Dominant substrate</b>	Very course gravel	Very course gravel	Large cobble	Course gravel
<b>Sub-dominate substrate</b>	Course gravel; small cobble	Small cobble; course gravel	Small cobble; very course gravel	Very course gravel; sand/silt
<b>Large wood count</b>	64	23	132	50
<b>Key wood count</b>	12	3	38	6
<b>Macro-pool count</b>	26	6	34	7

Reaches 1 and 2 were stream channel typed as low gradient moderate width contained channel (LCM), while reaches 3 and 4 were typed as low gradient small width contained channel (LCS).

Reach 5 and 7 were small moderate gradient mixed control channel (MMS), with Reach 6 typed as moderate gradient alluvial fan channel (AFM).

The stream survey crew did not document the upper extent of fish habitat on the mainstem of Trap Creek. However, coho salmon were trapped above where the Anadromous Waters Catalog previously ended. Coho salmon were found in traps located at GPS location 781 and 789. Further, a small tributary, represented as Reach 16 on the map, also had coho salmon present and rearing in a minnow trap located at GPS location 774. The upper extent of Tributary 3 was not documented, as there was no time for the crew to go back and map the remainder of Tributary 3.

# Trap Creek: Mainstem and Tributary 3

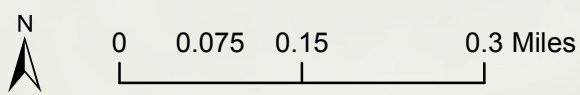


**Adult Observations**

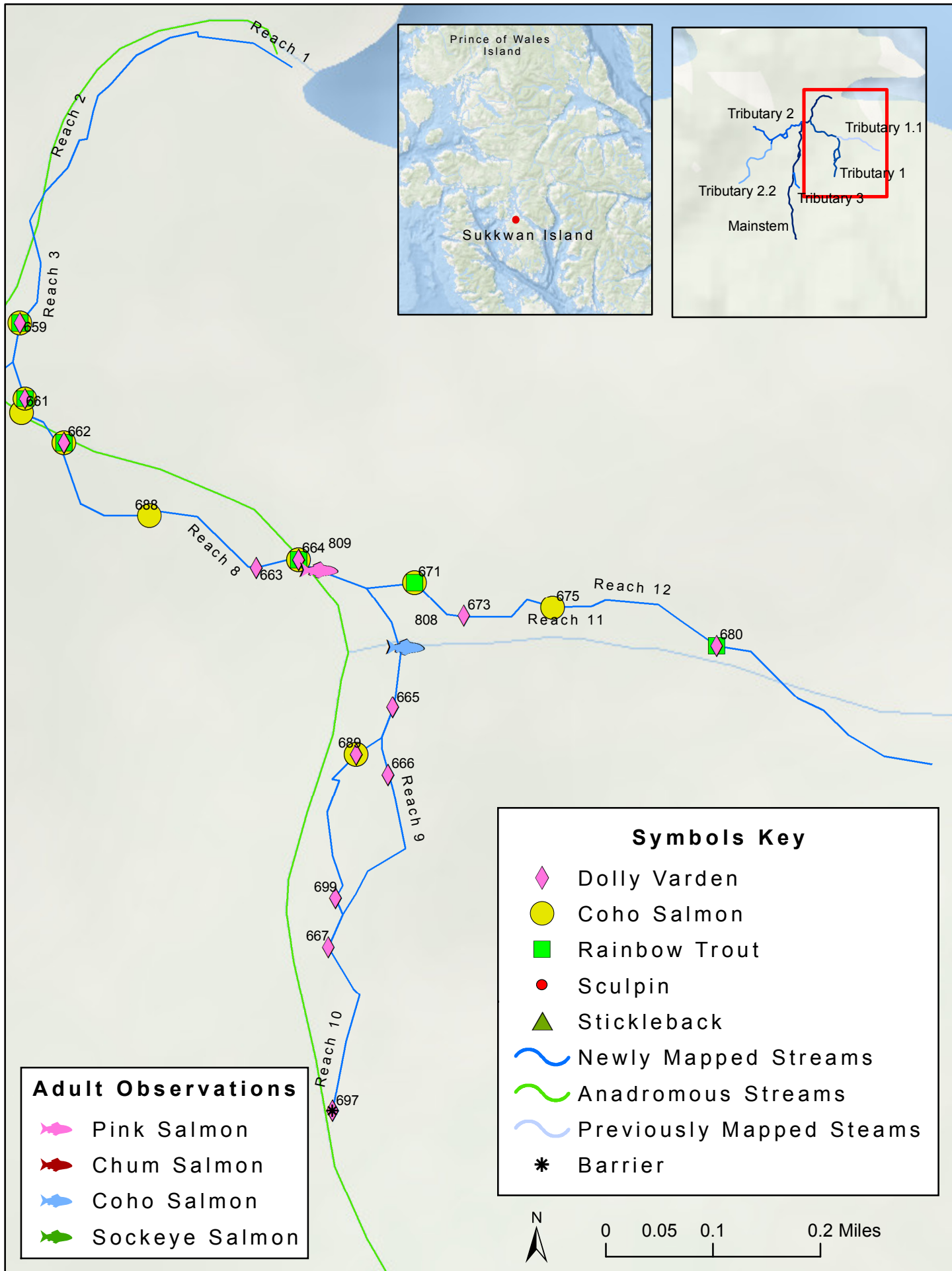
	Pink Salmon
	Chum Salmon
	Coho Salmon
	Sockeye Salmon

**Symbols Key**

	Dolly Varden
	Coho Salmon
	Rainbow Trout
	Sculpin
	Stickleback
	Newly Mapped Streams
	Anadromous Streams
	Previously Mapped Steams
	Barrier

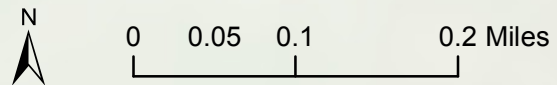


# Trap Creek: Tributary 1



Adult Observations	
	Pink Salmon
	Chum Salmon
	Coho Salmon
	Sockeye Salmon

Symbols Key	
	Dolly Varden
	Coho Salmon
	Rainbow Trout
	Sculpin
	Stickleback
	Newly Mapped Streams
	Previously Mapped Steams
	Barrier



## Fish caught in the mainstem and Tributary 3 of Trap Creek

**ADF&G permit no. SF2016-167**

**Summary report of fish collection activity.**

**The area biologist was contacted on: TIME/DATE: unknown**

Location ID (optional)	Coordinate			Name of water body	Date	Observer name (first name, middle initial, last name)	Fish collection method	Species	Life stage	Length (mm)			Disposition (1)
	Latitude	Longitude	Datum							determination method	No estimates/ranges	Length method	
659	55.172661	-132.831519	WGS84	GPS	Trap Creek	5/26/2016	Tony Sanderson	Minnow Trap	Dolly Varden	Juvenile	65	Fork	measured and released
659	55.172661	-132.831519	WGS84	GPS	Trap Creek	5/26/2016	Tony Sanderson	Minnow Trap	rainbow trout	Juvenile	77	Fork	measured and released
659	55.172661	-132.831519	WGS84	GPS	Trap Creek	5/26/2016	Tony Sanderson	Minnow Trap	coho salmon	Juvenile	65	Fork	measured and released
659	55.172661	-132.831519	WGS84	GPS	Trap Creek	5/26/2016	Tony Sanderson	Minnow Trap	coho salmon	Juvenile	40	Fork	measured and released
660	55.172079	-132.831453	WGS84	GPS	Trap Creek	5/26/2016	Tony Sanderson	Minnow Trap	coho salmon	Juvenile	72	Fork	measured and released
660	55.172079	-132.831453	WGS84	GPS	Trap Creek	5/26/2016	Tony Sanderson	Minnow Trap	Dolly Varden	Juvenile	70	Fork	measured and released
660	55.172079	-132.831453	WGS84	GPS	Trap Creek	5/26/2016	Tony Sanderson	Minnow Trap	rainbow trout	Juvenile	77	Fork	measured and released
660	55.172079	-132.831453	WGS84	GPS	Trap Creek	5/26/2016	Tony Sanderson	Minnow Trap	coho salmon	Juvenile	72	Fork	measured and released
660	55.172079	-132.831453	WGS84	GPS	Trap Creek	5/26/2016	Tony Sanderson	Minnow Trap	rainbow trout	Juvenile	80	Fork	measured and released
660	55.172079	-132.831453	WGS84	GPS	Trap Creek	5/26/2016	Tony Sanderson	Minnow Trap	coho salmon	Juvenile	54	Fork	measured and released
766	55.171125	-132.833601	WGS84	GPS	Trap Creek	7/14/2016	Tony Sanderson	Minnow Trap	Dolly Varden	Juvenile	138	Fork	measured and released
766	55.171125	-132.833601	WGS84	GPS	Trap Creek	7/14/2016	Tony Sanderson	Minnow Trap	Dolly Varden	Juvenile	150	Fork	measured and released
766	55.171125	-132.833601	WGS84	GPS	Trap Creek	7/14/2016	Tony Sanderson	Minnow Trap	rainbow trout	Juvenile	130	Fork	measured and released
766	55.171125	-132.833601	WGS84	GPS	Trap Creek	7/14/2016	Tony Sanderson	Minnow Trap	rainbow trout	Juvenile	105	Fork	measured and released
766	55.171125	-132.833601	WGS84	GPS	Trap Creek	7/14/2016	Tony Sanderson	Minnow Trap	Dolly Varden	Juvenile	60	Fork	measured and released
767	55.170557	-132.833257	WGS84	GPS	Trap Creek	7/14/2016	Tony Sanderson	Minnow Trap	rainbow trout	Juvenile	180	Fork	measured and released
767	55.170557	-132.833257	WGS84	GPS	Trap Creek	7/14/2016	Tony Sanderson	Minnow Trap	rainbow trout	Juvenile	72	Fork	measured and released
767	55.170557	-132.833257	WGS84	GPS	Trap Creek	7/14/2016	Tony Sanderson	Minnow Trap	Dolly Varden	Juvenile	105	Fork	measured and released
767	55.170557	-132.833257	WGS84	GPS	Trap Creek	7/14/2016	Tony Sanderson	Minnow Trap	coho salmon	Juvenile	72	Fork	measured and released
767	55.170557	-132.833257	WGS84	GPS	Trap Creek	7/14/2016	Tony Sanderson	Minnow Trap	Dolly Varden	Juvenile	107	Fork	measured and released
767	55.170557	-132.833257	WGS84	GPS	Trap Creek	7/14/2016	Tony Sanderson	Minnow Trap	rainbow trout	Juvenile	91	Fork	measured and released
767	55.170557	-132.833257	WGS84	GPS	Trap Creek	7/14/2016	Tony Sanderson	Minnow Trap	rainbow trout	Juvenile	65	Fork	measured and released
767	55.170557	-132.833257	WGS84	GPS	Trap Creek	7/14/2016	Tony Sanderson	Minnow Trap	Dolly Varden	Juvenile	100	Fork	measured and released
767	55.170557	-132.833257	WGS84	GPS	Trap Creek	7/14/2016	Tony Sanderson	Minnow Trap	Dolly Varden	Juvenile	107	Fork	measured and released
767	55.170557	-132.833257	WGS84	GPS	Trap Creek	7/14/2016	Tony Sanderson	Minnow Trap	Dolly Varden	Juvenile	105	Fork	measured and released
767	55.170557	-132.833257	WGS84	GPS	Trap Creek	7/14/2016	Tony Sanderson	Minnow Trap	Dolly Varden	Juvenile	105	Fork	measured and released
767	55.170557	-132.833257	WGS84	GPS	Trap Creek	7/14/2016	Tony Sanderson	Minnow Trap	coho salmon	Juvenile	77	Fork	measured and released
767	55.170557	-132.833257	WGS84	GPS	Trap Creek	7/14/2016	Tony Sanderson	Minnow Trap	Dolly Varden	Juvenile	80	Fork	measured and released
767	55.170557	-132.833257	WGS84	GPS	Trap Creek	7/14/2016	Tony Sanderson	Minnow Trap	coho salmon	Juvenile	73	Fork	measured and released
767	55.170557	-132.833257	WGS84	GPS	Trap Creek	7/14/2016	Tony Sanderson	Minnow Trap	Dolly Varden	Juvenile	105	Fork	measured and released
767	55.170557	-132.833257	WGS84	GPS	Trap Creek	7/14/2016	Tony Sanderson	Minnow Trap	Dolly Varden	Juvenile	103	Fork	measured and released
767	55.170557	-132.833257	WGS84	GPS	Trap Creek	7/14/2016	Tony Sanderson	Minnow Trap	coho salmon	Juvenile	72	Fork	measured and released
773	55.167364	-132.834689	WGS84	GPS	Trap Creek	7/14/2016	Tony Sanderson	Minnow Trap	rainbow trout	Juvenile	130	Fork	measured and released
773	55.167364	-132.834689	WGS84	GPS	Trap Creek	7/14/2016	Tony Sanderson	Minnow Trap	rainbow trout	Juvenile	116	Fork	measured and released
773	55.167364	-132.834689	WGS84	GPS	Trap Creek	7/14/2016	Tony Sanderson	Minnow Trap	Dolly Varden	Juvenile	110	Fork	measured and released
773	55.167364	-132.834689	WGS84	GPS	Trap Creek	7/14/2016	Tony Sanderson	Minnow Trap	Dolly Varden	Juvenile	115	Fork	measured and released
774	55.166366	-132.834418	WGS84	GPS	Trap Creek	7/14/2016	Tony Sanderson	Minnow Trap	coho salmon	Juvenile	61	Fork	measured and released
781	55.164775	-132.835612	WGS84	GPS	Trap Creek	7/14/2016	Tony Sanderson	Minnow Trap	Dolly Varden	Juvenile	110	Fork	measured and released
781	55.164775	-132.835612	WGS84	GPS	Trap Creek	7/14/2016	Tony Sanderson	Minnow Trap	coho salmon	Juvenile	74	Fork	measured and released
781	55.164775	-132.835612	WGS84	GPS	Trap Creek	7/14/2016	Tony Sanderson	Minnow Trap	coho salmon	Juvenile	75	Fork	measured and released
781	55.164775	-132.835612	WGS84	GPS	Trap Creek	7/14/2016	Tony Sanderson	Minnow Trap	coho salmon	Juvenile	82	Fork	measured and released
781	55.164775	-132.835612	WGS84	GPS	Trap Creek	7/14/2016	Tony Sanderson	Minnow Trap	coho salmon	Juvenile	80	Fork	measured and released
781	55.164775	-132.835612	WGS84	GPS	Trap Creek	7/14/2016	Tony Sanderson	Minnow Trap	coho salmon	Juvenile	74	Fork	measured and released

ADF&G permit no. SF2016-167

Summary report of fish collection activity.

The area biologist was contacted on: TIME/DATE: unknown

781	55.164775	-132.835612	WGS84	GPS	Trap Creek	7/14/2016	Tony Sanderson	Minnow Trap	coho salmon	Juvenile	60	Fork	measured and released
781	55.164775	-132.835612	WGS84	GPS	Trap Creek	7/14/2016	Tony Sanderson	Minnow Trap	coho salmon	Juvenile	70	Fork	measured and released
781	55.164775	-132.835612	WGS84	GPS	Trap Creek	7/14/2016	Tony Sanderson	Minnow Trap	Dolly Varden	Juvenile	81	Fork	measured and released
781	55.164775	-132.835612	WGS84	GPS	Trap Creek	7/14/2016	Tony Sanderson	Minnow Trap	coho salmon	Juvenile	75	Fork	measured and released
781	55.164775	-132.835612	WGS84	GPS	Trap Creek	7/14/2016	Tony Sanderson	Minnow Trap	Dolly Varden	Juvenile	72	Fork	measured and released
781	55.164775	-132.835612	WGS84	GPS	Trap Creek	7/14/2016	Tony Sanderson	Minnow Trap	Dolly Varden	Juvenile	69	Fork	measured and released
781	55.164775	-132.835612	WGS84	GPS	Trap Creek	7/14/2016	Tony Sanderson	Minnow Trap	Dolly Varden	Juvenile	36	Fork	measured and released
781	55.164775	-132.835612	WGS84	GPS	Trap Creek	7/14/2016	Tony Sanderson	Minnow Trap	Dolly Varden	Juvenile	70	Fork	measured and released
781	55.164775	-132.835612	WGS84	GPS	Trap Creek	7/14/2016	Tony Sanderson	Minnow Trap	Dolly Varden	Juvenile	74	Fork	measured and released
781	55.164775	-132.835612	WGS84	GPS	Trap Creek	7/14/2016	Tony Sanderson	Minnow Trap	Dolly Varden	Juvenile	76	Fork	measured and released
789	55.162726	-132.83498	WGS84	GPS	Trap Creek	7/14/2016	Tony Sanderson	Minnow Trap	coho salmon	Juvenile	66	Fork	measured and released
789	55.162726	-132.83498	WGS84	GPS	Trap Creek	7/14/2016	Tony Sanderson	Minnow Trap	coho salmon	Juvenile	72	Fork	measured and released
789	55.162726	-132.83498	WGS84	GPS	Trap Creek	7/14/2016	Tony Sanderson	Minnow Trap	Dolly Varden	Juvenile	75	Fork	measured and released
789	55.162726	-132.83498	WGS84	GPS	Trap Creek	7/14/2016	Tony Sanderson	Minnow Trap	Dolly Varden	Juvenile	105	Fork	measured and released
789	55.162726	-132.83498	WGS84	GPS	Trap Creek	7/14/2016	Tony Sanderson	Minnow Trap	Dolly Varden	Juvenile	92	Fork	measured and released
789	55.162726	-132.83498	WGS84	GPS	Trap Creek	7/14/2016	Tony Sanderson	Minnow Trap	Dolly Varden	Juvenile	95	Fork	measured and released
789	55.162726	-132.83498	WGS84	GPS	Trap Creek	7/14/2016	Tony Sanderson	Minnow Trap	coho salmon	Juvenile	60	Fork	measured and released
789	55.162726	-132.83498	WGS84	GPS	Trap Creek	7/14/2016	Tony Sanderson	Minnow Trap	Dolly Varden	Juvenile	94	Fork	measured and released
789	55.162726	-132.83498	WGS84	GPS	Trap Creek	7/14/2016	Tony Sanderson	Minnow Trap	Dolly Varden	Juvenile	94	Fork	measured and released
789	55.162726	-132.83498	WGS84	GPS	Trap Creek	7/14/2016	Tony Sanderson	Minnow Trap	Dolly Varden	Juvenile	89	Fork	measured and released
789	55.162726	-132.83498	WGS84	GPS	Trap Creek	7/14/2016	Tony Sanderson	Minnow Trap	Dolly Varden	Juvenile	72	Fork	measured and released
789	55.162726	-132.83498	WGS84	GPS	Trap Creek	7/14/2016	Tony Sanderson	Minnow Trap	Dolly Varden	Juvenile	72	Fork	measured and released
789	55.162726	-132.83498	WGS84	GPS	Trap Creek	7/14/2016	Tony Sanderson	Minnow Trap	Dolly Varden	Juvenile	93	Fork	measured and released
789	55.162726	-132.83498	WGS84	GPS	Trap Creek	7/14/2016	Tony Sanderson	Minnow Trap	Dolly Varden	Juvenile	75	Fork	measured and released
789	55.162726	-132.83498	WGS84	GPS	Trap Creek	7/14/2016	Tony Sanderson	Minnow Trap	coho salmon	Juvenile	57	Fork	measured and released
789	55.162726	-132.83498	WGS84	GPS	Trap Creek	7/14/2016	Tony Sanderson	Minnow Trap	coho salmon	Juvenile	70	Fork	measured and released
789	55.162726	-132.83498	WGS84	GPS	Trap Creek	7/14/2016	Tony Sanderson	Minnow Trap	coho salmon	Juvenile	77	Fork	measured and released
789	55.162726	-132.83498	WGS84	GPS	Trap Creek	7/14/2016	Tony Sanderson	Minnow Trap	Dolly Varden	Juvenile	68	Fork	measured and released
789	55.162726	-132.83498	WGS84	GPS	Trap Creek	7/14/2016	Tony Sanderson	Minnow Trap	Dolly Varden	Juvenile	102	Fork	measured and released
789	55.162726	-132.83498	WGS84	GPS	Trap Creek	7/14/2016	Tony Sanderson	Minnow Trap	coho salmon	Juvenile	66	Fork	measured and released
789	55.162726	-132.83498	WGS84	GPS	Trap Creek	7/14/2016	Tony Sanderson	Minnow Trap	coho salmon	Juvenile	73	Fork	measured and released
789	55.162726	-132.83498	WGS84	GPS	Trap Creek	7/14/2016	Tony Sanderson	Minnow Trap	Dolly Varden	Juvenile		Fork	ID'ed and released