



Dave Mitchell <dmitchell@greatlandtrust.org>

February E-News

Great Land Trust <lkugel@greatlandtrust.org>
Reply-To: Great Land Trust <lkugel@greatlandtrust.org>
To: dmitchell@greatlandtrust.org

Fri, Feb 26, 2021 at 1:05 PM

February Updates from Great Land Trust

[View this email in your browser](#)



CONSERVING VIBRANT HABITAT NEAR THE COPPER RIVER



Three cheers for local conservation heroes! This month, GLT completed a project with a local Kenny Lake couple to add 20 acres to a conservation easement that was originally completed in 2018, bringing the total to 60 acres conserved. The couple donated the conserved property to local nonprofit Wrangell Institute for Science and Environment (WISE), to support their mission of doing research, environmental education, and stewardship in the coming years.

This wildlife-rich area includes a rare clear-water stream near the confluence of the Tonsina and Copper Rivers, and offers beautiful salmon spawning habitat, beaver dams, and supporting wetlands.

This property is called Nic'anilen Na', named out of respect to the traditional Ahtna use of the area, and meaning "current flows out from shore creek."

[Visit our website to learn more about this project.](#)

SUMMER STEWARDSHIP POISITIONS



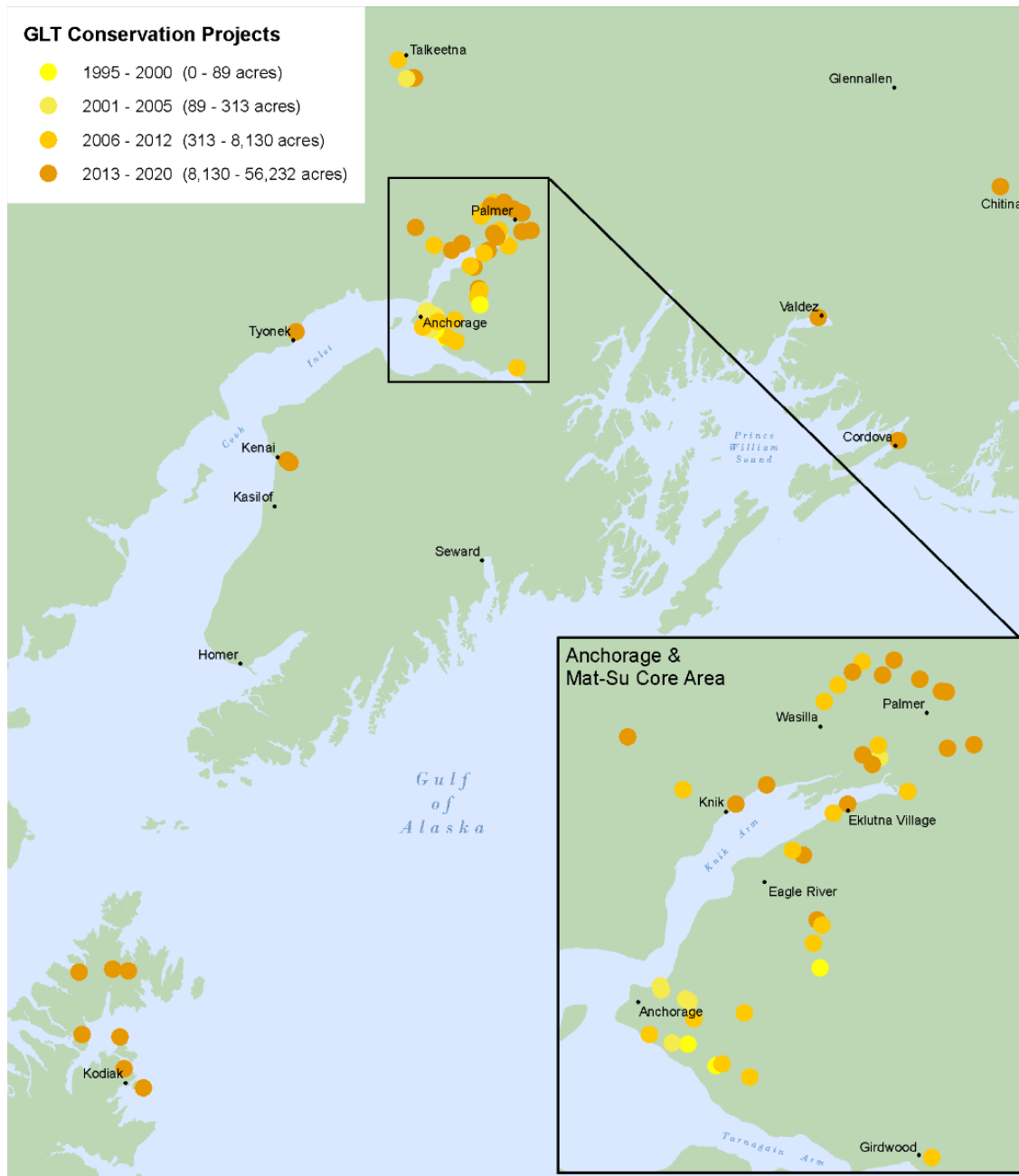
Looking for a fun way to spend your summer while making a difference in your community? Stay tuned! GLT is going to have two summer stewardship positions open soon - make sure to follow us on [Facebook](#) and [Instagram](#) to get the latest updates on when these postings go live.

PHOTO OF THE MONTH



GLT staff spotted this river otter at Westchester Lagoon in Anchorage on our way to visit the Fish Creek Estuary that's just down the trail. Seeing wildlife living in the heart of the city is a great reminder of why we work to ensure that important habitats are protected!

CONSERVATION THROUGH THE YEARS



Since GLT's start in 1995, we have conserved over 56,000 acres in Southcentral Alaska thanks to generous and dedicated supporters like you! This map shows our growth over the years, both in acres conserved, and in an expanded service area. [Visit our project map to read more about specific projects.](#)

As always, we couldn't do our work without our supporters! Thank you for believing in our mission, our conservation work, and in us.

Amanda, Libby, Mike, Ellen & Dave

Your Great Land Trust team



Donate



Copyright © 2016 Great Land Trust, All rights reserved.

Our mailing address is:

P.O. Box 101272
Anchorage, AK 99510
(907) 278-4998

[unsubscribe from this list](#) [update subscription preferences](#)

