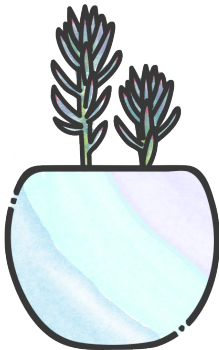


Blue Spruce

Sedum rupestre



- I'm a ground-covering succulent that gets my name from my beautiful, needle-like leaves.
- In late spring / early summer, I'll sprout long stalks with yellow flowers!
- As a sedum, I am especially easy to grow. Just put me in a sunny window and water me thoroughly whenever my soil is completely dry (usually every 2-3 weeks).

