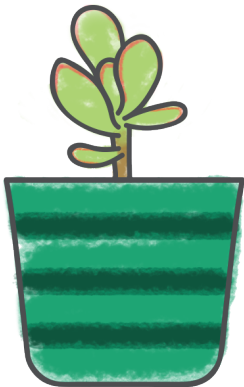


Roger

Crassula rogersii



- I'm a small succulent bush with unusual, velvety green leaves. In intense and prolonged sunlight, the tips of my leaves will turn red.
- I'll grow pale yellow flowers that cluster at the ends of long stems.
- Like other crassula, I am super hardy and appreciate lots of sunlight. Err on the side of less water, as I appreciate super dry soil. A good soak every 10 or so days is usually enough for me.

