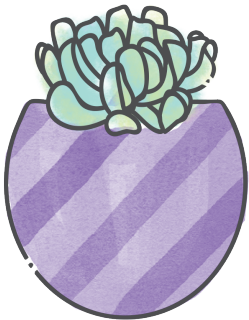


Topsy Turvy

Echeveria runyonii



- I'm a silvery-green succulent with rosettes that can grow up to 10 inches in diameter.
- My leaves are wide and folded length-wise, and I can grow beautiful orange flowers on tall stems in late summer and fall.
- Like other Echeveria, I love bright, indirect light and infrequent drenches of water.
- To avoid mealybugs, don't let me sit in water and remember to remove any dead leaves from the bottom of my stem as needed.

