



# Syngeneic Tumor Models

Accelerate Your Preclinical Immuno-oncology Research

## The BioDuro Advantage

Syngeneic models are playing an important role in immunotherapy research. Due to the animals' immunocompromised status, conventional xenograft models lack relevance when it comes to studying immunotherapies. Syngeneic mouse models allow for studies on how anticancer therapeutics perform in conjunction with a functional immune system.

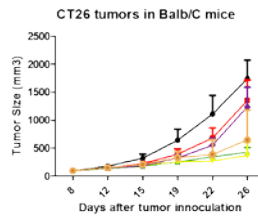
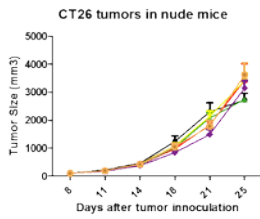
BioDuro's collection of validated and well-characterized syngeneic models provide an effective approach for assessing therapeutic efficacy, understanding mechanism of action and performing combination therapy studies.

## Syngeneic Models

Cancer	Model
Breast	4T1
Colon	CT26, MC38
Leukemia	C1498
Liver	H22, Hepa1-6
Lung	LLC
Melanoma	B16-F10

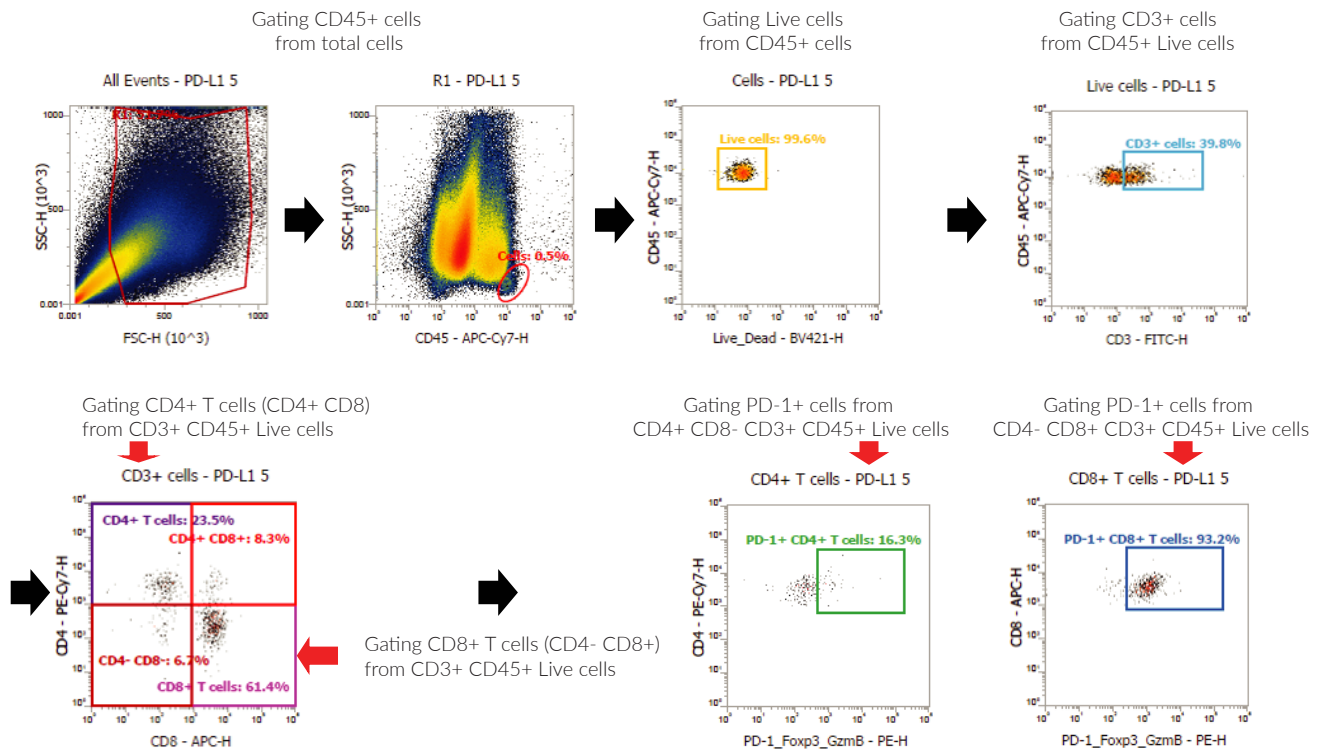
Validated models



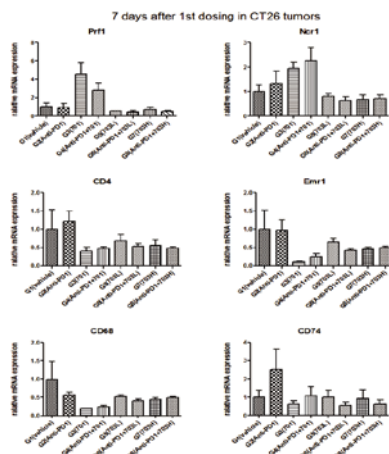


- Tumor growth inhibition curve
- Peripheral blood and tumor infiltrated lymphocytes phenotype analysis
- Serum multiplex cytokine analysis
- Histology staining
- Biomarker analysis by IHC and RT-PCR

FACS Analysis of Tumor Samples



Immuno-phenotype Analysis of Blood and Tumor Samples



Population analysis of blood and tumor samples by FACS or RT-PCR: CD4, CD8, NK, Treg, MDSC, Macrophage, DC

