

Custom Villa B366CT

SKYLINE

Custom Villa

Standard Series Features

- exterior wall studs: 2x4 Sidewall 16 inch O.C.
- interior wall studs: 2x4
- floor joists: 2x6 Floor joists
- ceiling insulation: R-22 Roof (R-14 Loft & Clerestory)
- floor insulation: R-11 Floor
- front rear eaves: per Floor plan
- electrical service: 100 AMP with exterior receptacle with GFI...
- roof pitch: 4:12
- window type: Low
- washer dryer plumb wire: Plum for Washer and Gas Dryer
- water heater: 40 gallon gas water heater w/ exterior access d...
- custom options: Skyline Homes 15 month full warranty
- dishwasher: Optional
- range hood: Lighted Power Hood
- sink: Composite sink
- flooring: No Wax Congoleum
- countertops: Laminate Crescent Edge
- lighting: Dining Light
- fans: Power Vent Fan
- custom options: Elongated China Commodes
- baseboards: 2 1/4 inch baseboard Moulding
- vaulted ceilings: Cathedral Ceiling throughout
- carpet pad: Throughout
- siding: Cemepanel
- rear door: House type steel rear door
- dormer: Skyview Dormer w/ trap windows
- guest bath combo: 60 inch 1 piece Fiberglass Tub/Shower Co...
- exterior wall on center: 16 inch
- interior wall on center: 16 inch
- floor decking: Tongue and Groove OSB Floor Decking
- wall insulation: R-11 Walls
- side wall height: 7'6 Sidewall
- endwall eaves: per Floor plan
- roof load: 20#
- roof truss: 30lb Roof Trusses
- shut off valves throughout: Water shut-off valves (All fixtures)
- ac ready: Yes
- furnace: Gas Furnace
- refrigerator: 18 Cu Ft Double Door Refridgerator
- range type: 30 inch Deluxe Gas Range
- cabinetry: Flat Panel Oak or Maple Cabinet
- faucets: Single lever faucet and sprayer by Delta
- backsplash: Custom 6in Lake Shore Blend glass backsplash
- garbage disposal: Optional
- custom options: Skycare Program
- sink: China sink with overflow and pop up drain
- tape texture: 1/2 inch drywall throughout
- carpet grade: 18oz
- window treatment: Vinyl Insulated windows
- shingles: 25 year shingles
- front door: 6-Panel Steel Front Door
- lighting: At all exits
- custom options: Lauan Backer Panels at marriage

Due to the fact that Skyline homes continuously updates and modifies its products, our brochures and literature are for illustrative purposes only. Floorplan dimensions are nominal. We reserve the right to make changes due to material changes, prices, colors specifications, features at anytime without notice or obligation. Your retailer can provide you with specific information on the home of your choice.



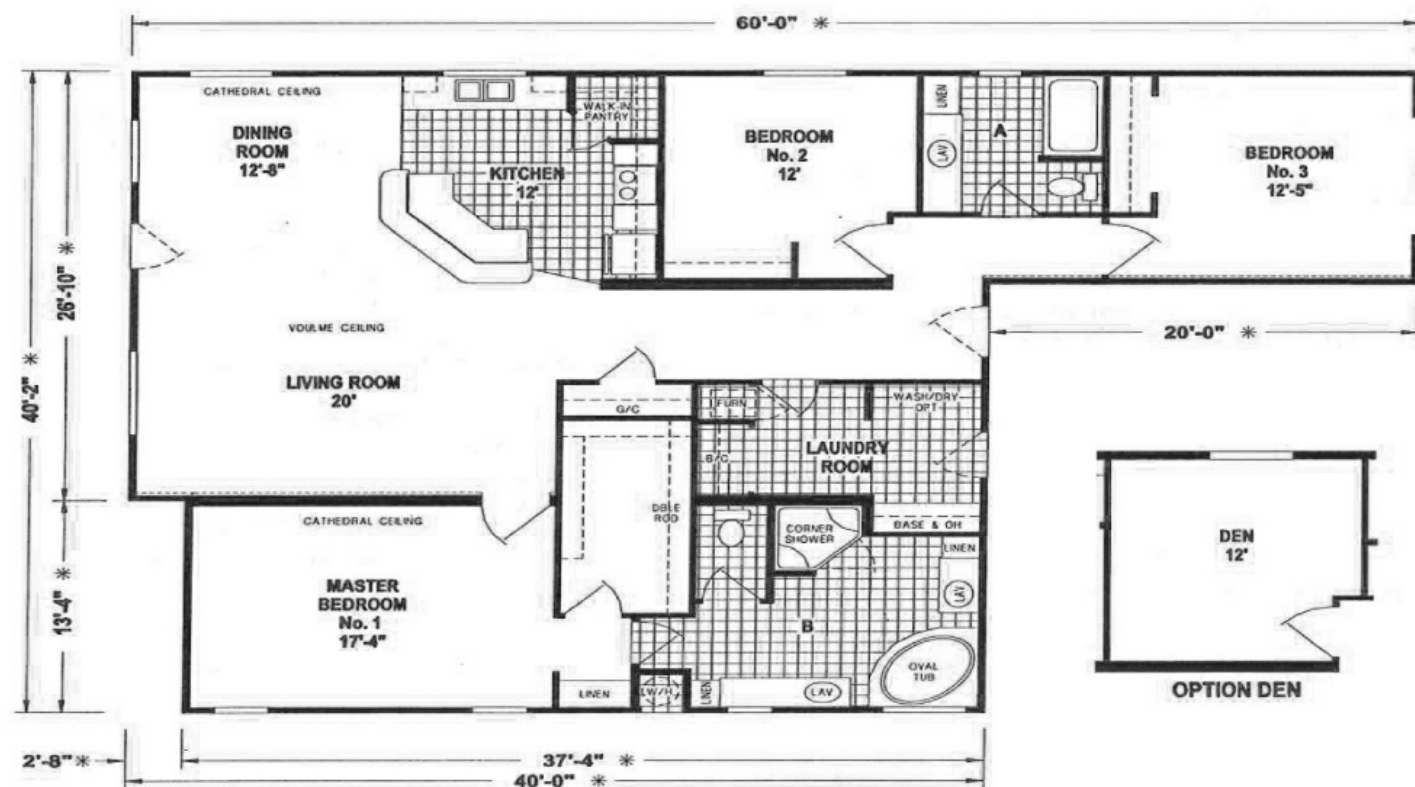
US Modular, Inc.
27400 Jerry Jo Ln
Menifee, CA 92584

(951) 679-9907
USModularInc.com

Custom Villa B366CT

SKYLINE

Custom Villa *Triple Wide Series*



MODEL: **B366CT**
42 x 60 1,844 Sq.Ft.
3 Bedroom 2 Bathroom

SKYLINE
BRINGING AMERICA HOME. BRINGING AMERICA FUN.

3 BEDS 2 BATHS 1844 SQ. FT

This mid sized triple section Skyline Homes Custom Villa B 366 CT is designed with offset sections to accommodate irregular placement sites in land lease communities and private property installations, as well as attached garage. Home is available as a manufactured home as well as a modular home and can be customized to meet homebuyer requirements. Located in San Jacinto, California, Skyline Homes are available for sale in Southern California, Arizona Nevada and Utah.



US Modular, Inc.
27400 Jerry Jo Ln
Menifee, CA 92584

(951) 679-9907
USModularInc.com