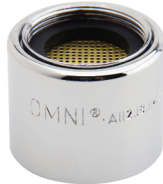


## LAMINAR FLOW Model A-200 Series



Male vandal resistant thread housing



Female vandal resistant thread housing



Dual thread housing

### APPLICATION

Omni® Model A-200 Series faucet flow controls are recommended for healthcare facilities, office buildings, hotels, motels, schools, restaurants and other locations where the addition of flow control is required at all faucet applications

### PRODUCT FEATURES

- Flow Rates - 1.0, 1.5, 2.0, 2.5 GPM
- Unique Laminar Flow is a clear, non splashing stream
- Pressure Compensation gives a constant flow rate from 40-120 PSI
- Cost Savings - cuts water/energy use
- Low Noise - not to exceed 20DBa at 50PSI
- Self Cleaning/Maintenance Free
- Meets CA AB1953 Lead Free requirements
- OPTIONAL: A-1111 Spanner Wrench for vandal resistant option

## LOW FLOW Model L-200 Series



Male vandal resistant thread housing



Female vandal resistant thread housing



Dual thread housing

### APPLICATION

Omni® Model L-200 Series faucet flow controls are recommended for public restrooms and other locations where the addition of pressure compensating 0.50 gpm flow control is required at all faucet applications.

### PRODUCT FEATURES

- 0.50 GPM Flow Rate meets ASHRAE standards for energy conservation
- Pressure Compensation gives a constant flow rate from 40-120 PSI
- Cost Savings - cuts water/energy use
- Low Noise - not to exceed 20 Dba at 50PSI
- Rosetta/Soft Flow Spray Pattern is non-aerated, and provides improved wetting
- Self Cleaning/Maintenance Free
- Meets CA AB1953 Lead Free requirements
- OPTIONAL: A-1111 Spanner Wrench for vandal resistant option

**LAMINAR & LOW FLOW**

**SUGGESTED SPECIFICATIONS**

**Model A-200 Series Laminar Flow Model**

All faucets shall be equipped with Omni<sup>®</sup> A-200 Series Faucet Flow Controls or approved equal. The pressure compensating flow control device shall be capable of delivering a set specified flow rate of \_\_\_\_\_ GPM (+/-10%) over a range of supply pressures from 40-120 PSI. The units are to incorporate a self-cleaning feature.

**Model L-200 Series Low Flow 0.5 GPM Model**

All faucet shall be equipped with Omni<sup>®</sup> L-200 Faucet Flow Controls or approved equal. The pressure compensating flow control device shall be capable of delivering a set specified flow rate of 0.5 GPM (+/-10%) over a range of supply pressures from 40-120 PSI. Units are to be low noise (not to exceed 20 Dba at 50 PSI). The units are to incorporate a self-cleaning feature.

**OPERATION**

The Omni<sup>®</sup> Faucet Flow Control Models are installed at the faucet spout end to provide a specified flow rate at end supply pressure within a range of 40-120 PSI and any water temperature not to exceed 160°F.

Accuracy of flow is within plus or minus 10% of the flow rate specified. The Laminar Flow models, when specified, will provide a flow, which is non-aerated, non-splash and crystal clear.

The 0.5 GPM Low Flow models, when specified, will provide a Rosetta or Soft Flow spray pattern, which is non-aerated, and sufficient for hand washing.

All of the Faucet Flow Control models arrest the discharge velocity of the fluid stream and distribute the stream mass over a sufficient area to prevent undesirable noise generation. Noise will not exceed 20 Dba at a supply pressure of 50 PSI.

All units are self-cleaning. Faucet Flow Control models are available in 0.5, 1.0, 1.5, 2.0 and 2.5 GPM flow rates.

**MATERIAL**

The housing is brass alloy #360, buffed and nickel-chrome plated per ASTM B456-SC-2. All threads conform to industry standards for plumbing and piping applications: 15/16-27NS-2A and 55/64-27NS-2B. The elastomeric flow control is ethylene propylene, 70 durometer. The perforated plates are 70/30 brass alloy sheet per ASTM-B-36-61, 0.016 thick with perforations per manufacturer. Screens are series 300 stainless steel, 40 mesh. The cartridge housing and spacers are celcon, type M-90-04, injection molded.

**MODEL NUMBER SELECTION**

**A - 2 10 - VR - 2.50**

Flow Type	Flow Control Series	Thread Type	Vandal Resistant	Flow Rate
A - Laminar L - Low Flow (0.5GPM)	2 - 200 Series	00 - Male 10 - Female 12 - Dual	VR - Vandal Resistant	0.5 - 0.50 GPM Soft Flow or Rosetta 1.0 - 1.0 GPM 1.5 - 1.5 GPM 2.0 - 2.0 GPM 2.5 - 2.5 GPM

For non-standard thread sizes, please contact manufacturer  
**NOTE:** VR option not available for dual thread