



**BOUNTYBRASSWARE**  
Designer Bathroom Fittings



## The Pop Down® Sink Drain

WWW.BOUNTYBRASSWARE.US

### BBUX: Specifications

### 71310-##-FULL, "Fully Finished"

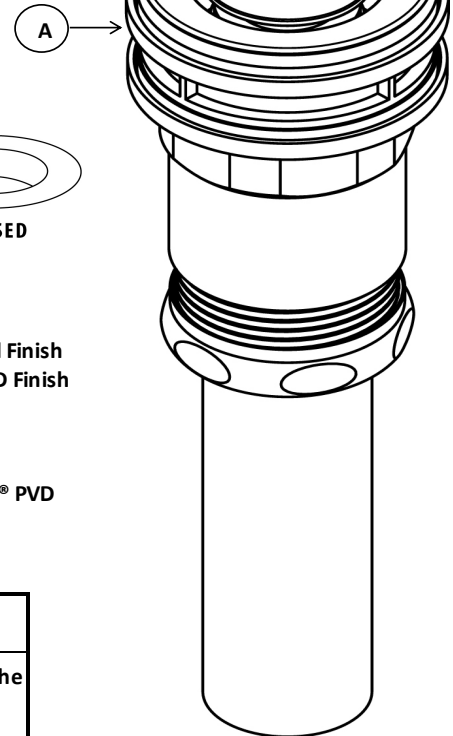
#### Features

- Exclusive World Wide Patented Pop Down® Closure
- Elegant Profile: Stopper Sits Flush in Open Position
- Use for Sinks WITH or WITHOUT Overflow. See Page 2
- Solid Brass Construction
- 1-1/4" Connection for Most All 1-1/4 or 1-1/2" Sink Openings
- Fits Virtually ANY Sink Hole's Thickness (height)
  - Fits Up to 1-3/4" Basin Thickness
- † ○ Stackable extension available (see 29356) to suit virtually any basin thickness

This Model is Best Used When "Below the Sink" is an Exposed Installation

Drawings not to scale

This model is finished on all exposed surfaces except thin-sink application black play spacer shown at A

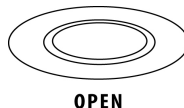


#### Compliance

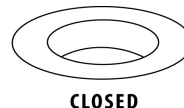


- ASME A112.18.2-2011 / CSA B125.2-11
- Uniform Plumbing Code UPC®
- National Plumbing Code of Canada

#### Operation



OPEN



CLOSED

#### Finishes / Colors "71310-##-FULL"

- -PC, Polished Chrome, Standard Finish
- -AB, Antique Brass, Artisan Finish
- -BTB, Bella Terra Bronze, Artisan Finish
- -GRP, Graphite, Satin Enduro® PVD
- -LSG, Satin Gold Enduro® PVD
- -MBLK, Matte Black, Artisan Finish
- -MOB, Mocha Bronze Satin Enduro® PVD
- -ORB, Oil Rubbed Bronze, Natural Finish
- -PVD, Polished Brass Enduro® PVD Finish
- -PN, Polished Nickel PVD Finish
- -SN, Satin Nickel, Natural Finish
- -SB, Satin Brass Enduro® PVD
- -SBZ, Champagne Bronze Enduro® PVD
- -SS, Satin Nickel Enduro® PVD

#### Product Specification

Add Finish/Color Suffix  
"-##-FULL" to Below  
Model Number

The sink drain shall be made of solid brass and ancillary durable material construction. The drain shall be furnished with 1-1/4" OD connection. The Drain shall have a Pop Down® stopper. The drain shall be Bounty Brassware® Pop Down® 71310-\_\_\_\_-FULL

### Special Installation Considerations

**29356**

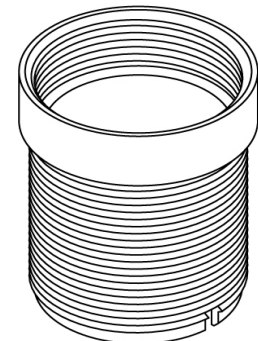
#### † Extension

Drawings not to scale

- Use this extension when sink thickness exceeds 1-3/4" thick (this extension is rarely required)
- Extensions may be "stacked" to achieve desired working height
- Each extension adds about 1-1/4" depth to the effective installation height
- See Installation Instructions

#### Additional Product Specification

The Pop Down® Drain (71310-##) shall be furnished with solid brass extension(s) for sink thicknesses exceeding standard 1-3/4" maximum. One extension shall be furnished for each additional 1-1/4" of sink thickness required above and beyond the standard 1-3/4" maximum thickness. The extension shall be 29356.



U.S. Patent 9151027

BOUNTY BRASSWARE AMERICAS, LLC, THE AMERICA'S DISTRIBUTOR, IS A SOLE AND SEPARATE ENTITY AND IS NEITHER RELATED TO NOR OWNED BY BOUNTY BRASSWARE OF AUSTRALIA

REVISED: 1-Mar-21

©2016 BOUNTY BRASSWARE AMERICAS, LLC



**BOUNTYBRASSWARE**  
Designer Bathroom Fittings



# The Pop Down® Sink Drain

WWW.BOUNTYBRASSWARE.US

## BBUX: Assembly & Dimensions

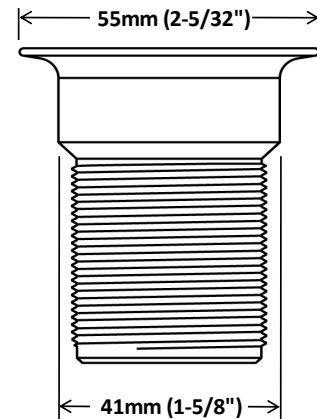
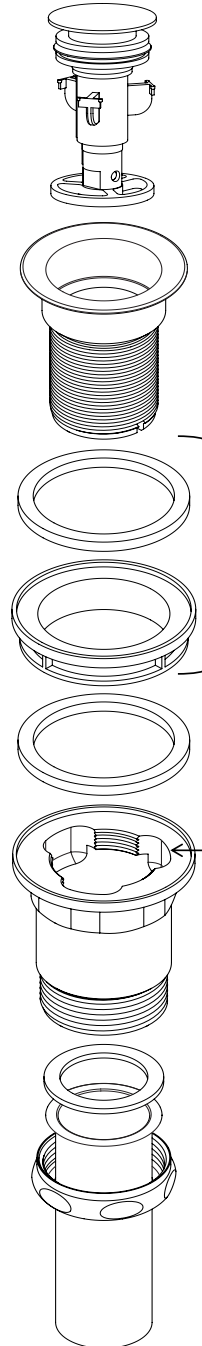
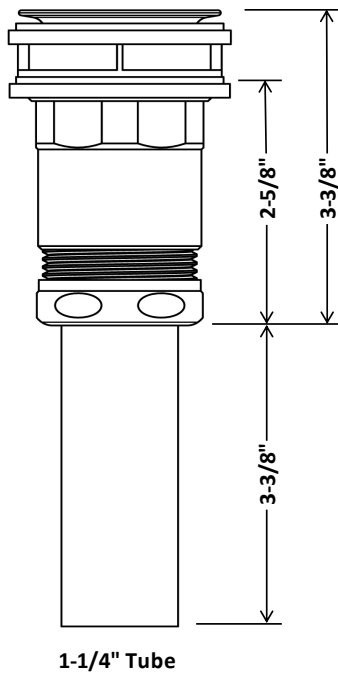
**71310-##**

Nominal dimensions, shown to nearest 1/16"

Drawings not to scale

### PLEASE NOTE:

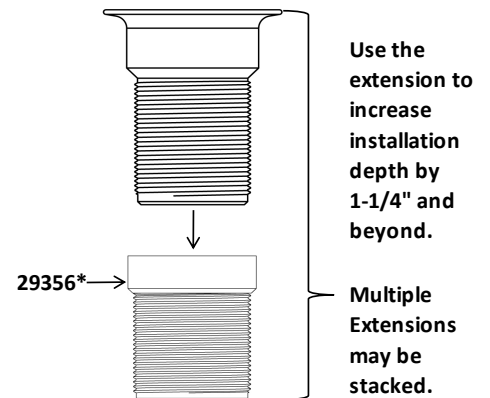
The Pop Down® installs on  
sinks WITH or WITHOUT overflow  
One drain will suit EITHER application  
See overflow ports in exploded view for clarification\*



Only install these two for thin-sink applications  
(e.g. metal sinks or sink thickness  $\leq 1/2"$  ±)

### \*Over-flow Ports (3)

Our Pop Down® Drain fits sinks  
WITH or WITHOUT over-flow capability



\*Extension 29356 Sold Separately

U.S. Patent 9151027

REVISED: 26-Mar-21

BOUNTY BRASSWARE AMERICAS, LLC, THE AMERICA'S DISTRIBUTOR, IS A SOLE AND SEPARATE ENTITY AND IS  
NEITHER RELATED TO NOR OWNED BY BOUNTY BRASSWARE OF AUSTRALIA

©2016 BOUNTY BRASSWARE AMERICAS, LLC