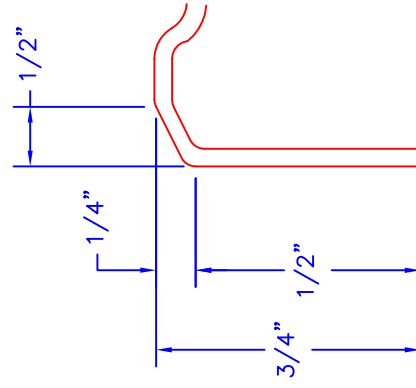
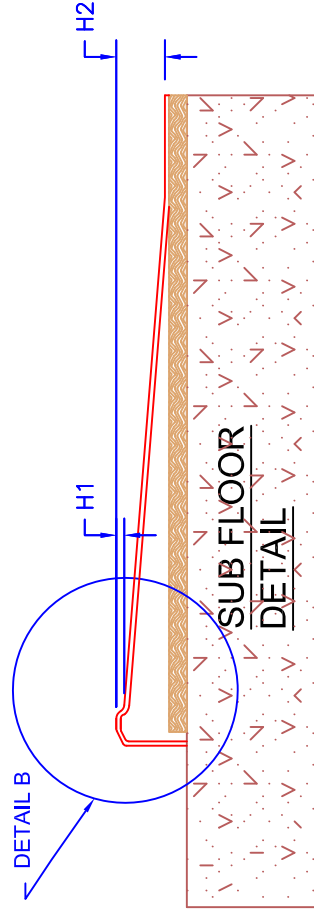
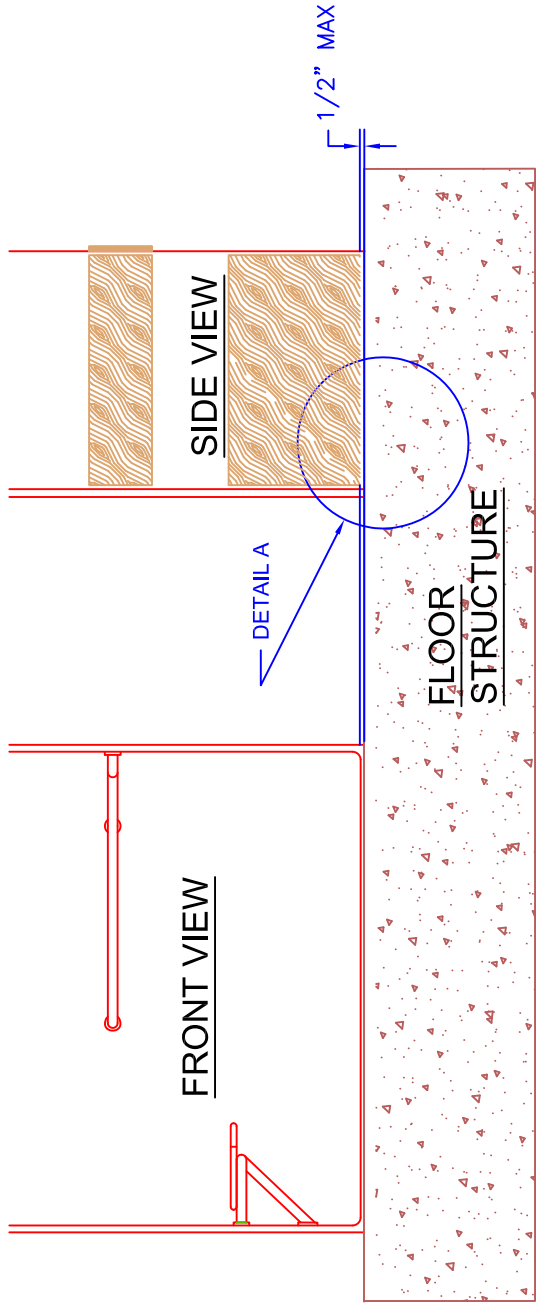


MODEL	H1	H2
HS38-38 BF	0" (.000)	1/2" (.50)
HES45-50 BF	1/8" (.125)	3/8" (.375)
HS62-36 BF	1/8" (.125)	3/8" (.375)
HES62-36 BF	1/8" (.125)	3/8" (.375)
HES62-31 BF	1/8" (.125)	3/8" (.375)
HES45-50 BF CD	0" (.000)	1/2" (.50)
HES63-38 BF	1/8" (.125)	3/8" (.375)
HES62-48 BF	1/8" (.125)	3/8" (.375)
HES51-51BF CD	1/8" (.125)	1/2" (.50)



DETAIL A

DETAIL B

PROFILES ARE EXAGGERATED FOR CLARITY OF DETAIL.

UNLESS OTHERWISE SPECIFIED TOLERANCES ARE AS FOLLOWS	
DECIMAL:	FRACTIONAL: ±1/4"
XX = ±.010	ANGULAR: ±1/2°
.XXX = ±.005	
CAPACITY/ OPERATING LEVEL:	GAL
CAPACITY/ OVERFLOW LEVEL:	GAL
APPROX. UNIT WEIGHT:	LBS
APPROX. SHIPPING WEIGHT:	LBS

Fiber Care Baths, Inc.
 9832 YuCCA Rd.
 Adelanto, CA 92301
 Phone: 760-246-0019
 Fax: 760-246-5189

TITLE	SIZE	MODEL #	REV
3/4" THRESHOLD HEIGHT ABOVE FLOOR SURFACE ON INSTALLED WHEELCHAIR ACCESSIBLE SHOWER	A	HSXX-XX-TH BF	G
DWN	ANDREW		
DATE	05-05-15	SCALE	N.T.S.
		PAGE	1 OF 1

THE INFORMATION CONTAINED IN THIS DRAWING IS THE SOLE PROPERTY OF FIBER CARE BATHS, INC. ANY REPRODUCTION OR UNAUTHORIZED USE IN PART OR AS A WHOLE WITHOUT THE WRITTEN PERMISSION OF FIBER CARE BATHS, INC. IS STRICTLY PROHIBITED. PRODUCT CONFIGURATION, DIMENSIONS, STANDARD ACCESSORIES, MATERIALS COMPOSITION AND CONSTRUCTION ARE SUBJECT TO CHANGE WITHOUT NOTICE.