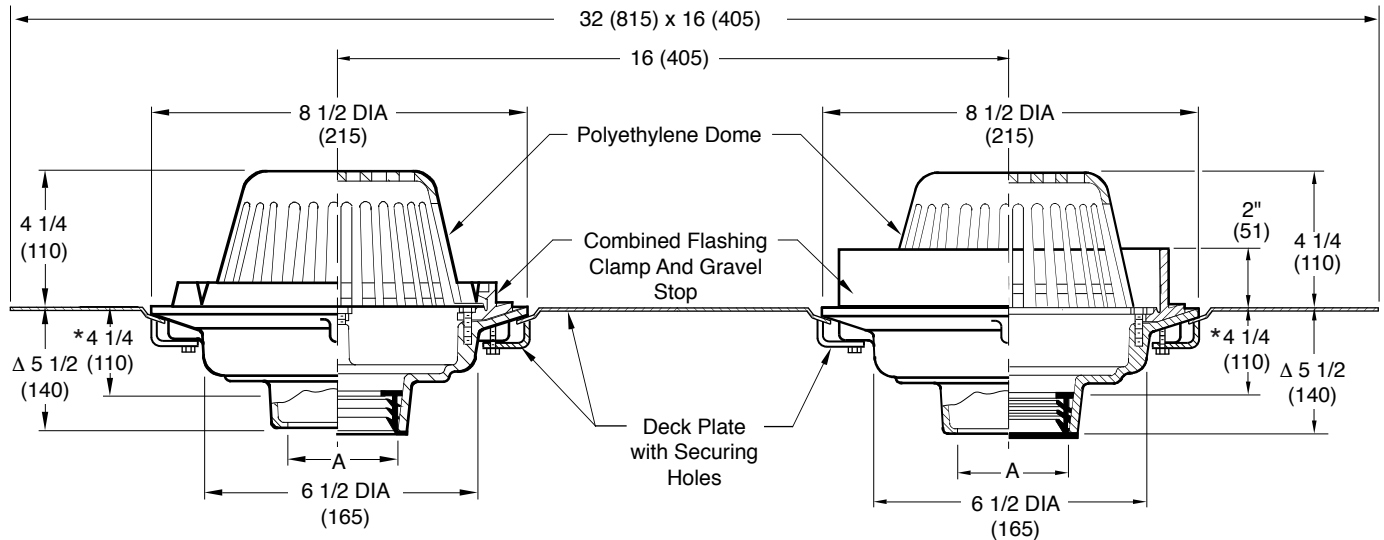


ROOF DRAIN AND OVERFLOW DRAIN WITH DECK TOP MOUNTING PLATE

Free Area
41.5 SQ IN
(268) SQ CM



A (Pipe Size) = 02 (50), 03 (75) or 04 (100)

☐ 1830C.....CAULK OUTLET
☐ 1830Y..... NO-HUB OUTLET

NOTE: Stated flow rates for roof drains are based on particular test piping configurations and dimensions. Installed roof drain flow rates cannot be stated unless the attached piping configuration is known and the effects of the drainage calculated.

REGULARLY FURNISHED:
 Duco Cast Iron Body, Double Deck Plate with Securing Holes, Combined Flashing Clamp and Gravel Stop for Roof Drain and External Water Dam for Overflow Drain, both with Polyethylene Dome.

VARIATIONS:
☐ Expansion Joint (Specify Fig.1710)
☐ Extension (Specify Height) -E
☐ L Speedi-Set Service Weight
☐ LXH Speedi-Set Extra Heavy
☐ Secondary Flashing Clamp -C2
☐ Vandal Proof Dome -U
☐ T Threaded Outlet

OPTIONAL MATERIALS:
☐ Aluminum Dome -AD
☐ Cast Iron Dome -CID
☐ Galvanized Cast Iron Dome -CIDG
☐ Galvanized Cast Iron Body & Collar -G
☐ Rough Bronze Dome -RBD

* **NOTE:** This Dimension to Internal Stop of Speedi-Set Gasket.

Δ Same for Caulk, No-Hub and Speedi-Set, 4 1/4 (110) for Threaded.

NOTE: Dimensions shown in parentheses are in millimeters.

1830

FIGURE NUMBER

REV.	DATE	DESCRIPTION	BY	CKD. BY
A	11-16-15	Added Flow Rate Note	TBW	BW

WEIGHT POUNDS	VOLUME CUBIC FEET	FIGURE NUMBER
		1830