

ProPEX lead-free (LF) brass and brass coupling

Submittal information

Date submitted:

Project Information

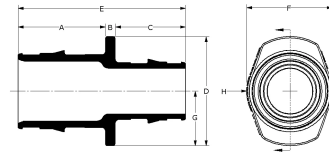
Job name :	Location :
Engineer :	Date submitted:
Contractor :	Submitted by:
Manufacturer's representative :	Approved by :

Technical Data

Temp./pressure ratings	73°F (23°C) at 160 psi (11 bar)
	180°F (82°C) at 100 psi (6.9 bar)
	200°F (93°C) at 80 psi (5.5 bar)

Product information and application use

ProPEX® lead-free (LF) brass couplings are available for use in hot and cold domestic potable water and hydronic heating and cooling systems. The coupling features the Uponor ProPEX fitting for connections to Wirsbo hePEX™ tubing or Uponor AquaPEX® tubing. Couplings are safe for direct burial in soil.



Part name	Part no.	A [inch]	B [inch]	C [inch]	D [inch]	E [inch]	F [inch]	G [inch]	H [inch]	Weight per UOM [lbs/UOM]	Material
ProPEX LF Brass Coupling, 1" PEX x 1" PEX	LF4541010	1.181	0.125	1.181	1.38	2.487	1.38	0.69	0.69	0.2	LF Brass
ProPEX LF Brass Coupling, 3/8" PEX x 1/2" PEX	LF4543850	0.709	0.125	0.591	0.74	1.425	0.74	0.37	0.37	0.05	LF Brass
ProPEX LF Brass Coupling, 1/2" PEX x 1/2" PEX	LF4545050	0.709	0.125	0.709	0.79	1.543	0.79	0.395	0.395	0.07	LF Brass
ProPEX LF Brass Coupling, 1/2" PEX x 3/4" PEX	LF4545075	0.945	0.125	0.709	1.2	1.779	1.2	0.6	0.6	0.12	LF Brass
ProPEX LF Brass Coupling, 3/4" PEX x 1" PEX	LF4547510	0.945	0.125	1.181	1.38	2.251	1.38	0.69	0.69	0.16	LF Brass
ProPEX LF Brass Coupling, 3/4" PEX x 3/4" PEX	LF4547575	0.945	0.125	0.945	1.1	2.015	1.1	0.55	0.55	0.13	LF Brass
ProPEX Brass Coupling, 5/8" PEX x 5/8" PEX	Q4546363	0.866	0.125	0.866	0.94	1.857	0.94	0.47	0.47	0.08	Brass

Part name	Part no.	End type 1	End type 2
ProPEX LF Brass Coupling, 1" PEX x 1" PEX	LF4541010	ProPEX 1"	ProPEX 1"
ProPEX LF Brass Coupling, 3/8" PEX x 1/2" PEX	LF4543850	ProPEX 3/8"	ProPEX 1/2"
ProPEX LF Brass Coupling, 1/2" PEX x 1/2" PEX	LF4545050	ProPEX 1/2"	ProPEX 1/2"
ProPEX LF Brass Coupling, 1/2" PEX x 3/4" PEX	LF4545075	ProPEX 1/2"	ProPEX 3/4"
ProPEX LF Brass Coupling, 3/4" PEX x 1" PEX	LF4547510	ProPEX 3/4"	ProPEX 1"
ProPEX LF Brass Coupling, 3/4" PEX x 3/4" PEX	LF4547575	ProPEX 3/4"	ProPEX 3/4"
ProPEX Brass Coupling, 5/8" PEX x 5/8" PEX	Q4546363	ProPEX 5/8"	ProPEX 5/8"

Installation

ProPEX tools and ProPEX rings (sold separately) are required for connecting the PEX tubing. Use the appropriately sized Uponor ProPEX ring for tubing connections. For more information, refer to the Uponor AquaPEX professional plumbing installation guide, the Uponor AquaSAFETM residential fire sprinkler installation guide or the Uponor radiant floor heating installation handbook.

Related applications

- PEX-a Plumbing Systems
- Uponor Residential Fire Safety Systems
- Radiant Heating and Cooling Systems
- Permafrost Protection Systems
- Turf Conditioning Systems

Codes	Standards	Listings
IMC BC IRC NPC of Canada UMC*	ASTM F1960 CSA B137.5 NSF-14 ASTM F877*	IAPMO-ES ICC-ES-PMG cNSFus-rfh*

Trademark Information	Contact information	
<p>ProPEX® is a registered trademark of Uponor Inc. ProPEX™ is a trademark of Uponor Ltd.</p> <p>* Some SKUs in this family have additional codes, standards, or listings. Please see uponor.com for complete information.</p>	<p>Uponor Inc. 5925 148th Street West Apple Valley, MN 55124 T 800.321.4739 F 952.891.2008</p>	<p>Uponor Ltd. 6510 Kennedy Road Mississauga, ON L5T 2X4 T 888.594.7726 F 800.636.9517</p>