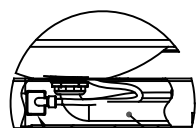


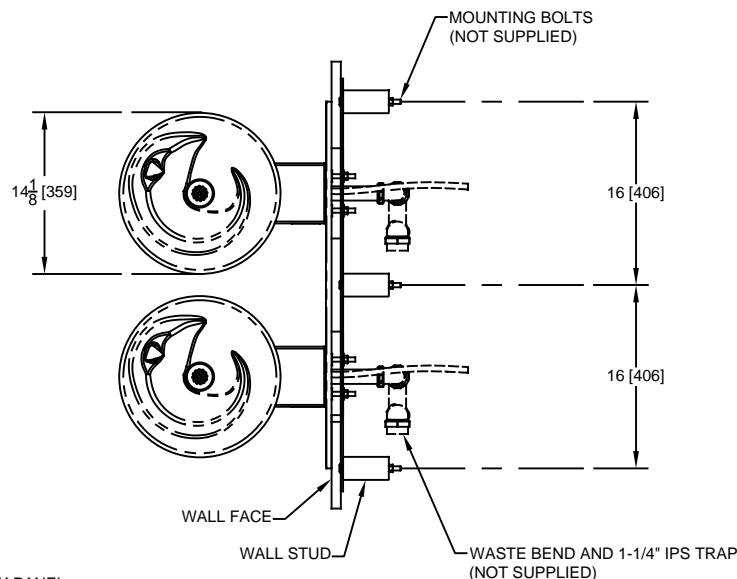
NOTES:

1. HOLD ROUGH-IN DIMENSIONS $\pm 1/8"$ (3.2mm).
2. WHEN INSTALLING THIS UNIT, LOCAL, STATE, OR FEDERAL CODES SHOULD BE ADHERED TO FOR INSTALLATION DIMENSIONS (LOCATIONS), WASTE AND SUPPLY REQUIREMENTS OTHER THAN SHOWN.
3. INSTALLER MUST PROVIDE TRAP FOR PROPER INSTALLATION.
4. REMOVE VALVE FROM PUSH BUTTON TO INSTALL WASTE ELBOW ONTO BOWL. AFTER WASTE ELBOW IS INSTALLED, REINSTALL VALVE AND ADJUST FLOW.
5. REFER TO 5874 SERIES OPERATION AND MAINTENANCE MANUAL FOR PUSH BUTTON AND VALVE INSTALLATION/MAINTENANCE INSTRUCTIONS.



DETAIL A
SCALE 1 : 12

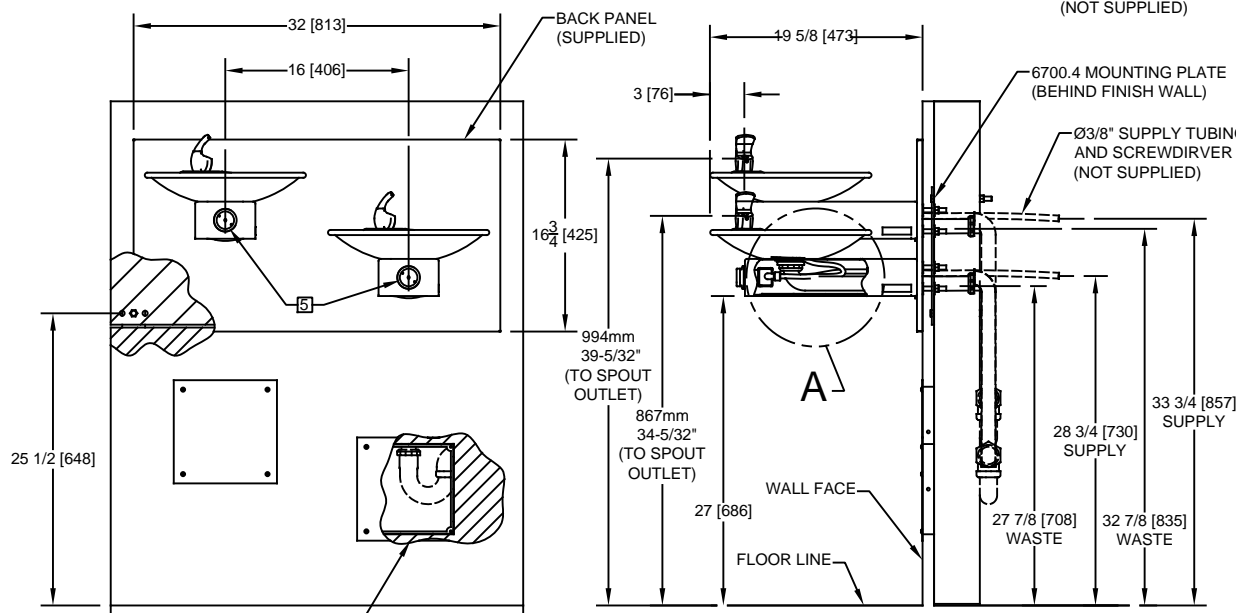
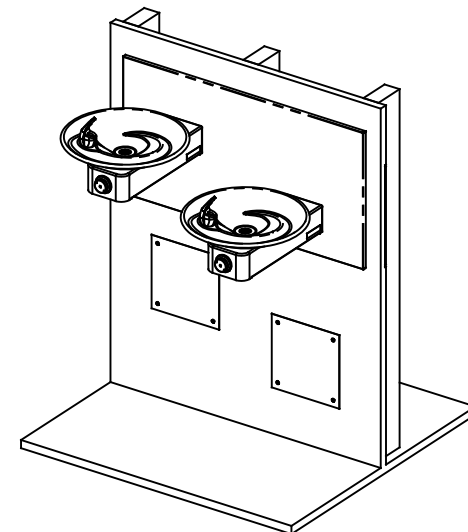
1-1/4" O.D.
WASTE BEND
(SUPPLIED)



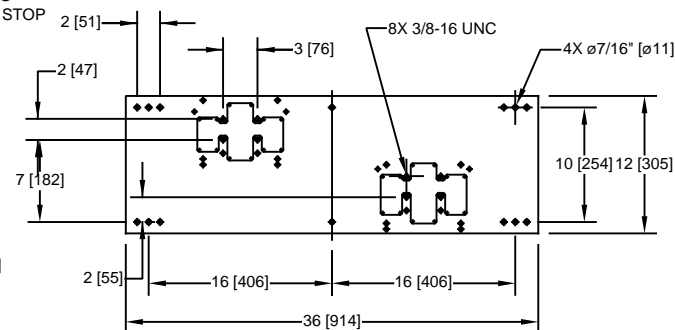
MOUNTING BOLTS
(NOT SUPPLIED)

WALL FACE
WALL STUD

WASTE BEND AND 1-1/4" IPS TRAP
(NOT SUPPLIED)



OPTIONAL TRAP ACCESS PANEL
MODELS 6603 AND 6603HPS



		<p>1455 KLEPPE LANE SPARKS, NEVADA 89431 (775) 359-4712 FAX (775) 359-7424 E-MAIL: HAWS@HAWSO.COM WEBSITE: WWW.HAWSO.COM</p>	
ECN NO.	REVISED PER	BY:	MODEL(S)
DRAWN:	DATE:	CHK'D:	1011/1011HPS
APPROVED:	DATE:		DRINKING FOUNTAIN
FV	07/06/17		
SCALE: 1:1		DRAWING TYPE: INSTALLATION	
SIZE: A		SHEET 1 OF 1	
PART NUMBER		REVISION	
0002076520.D		19	