

PROJECT:	_____	UNIT TAG:	_____	QUANTITY:	_____
REPRESENTATIVE:	_____	TYPE OF SERVICE:	_____	DATE:	_____
ENGINEER:	_____	SUBMITTED BY:	_____	DATE:	_____
CONTRACTOR:	_____	APPROVED BY:	_____	DATE:	_____
		ORDER NO.:	_____	DATE:	_____

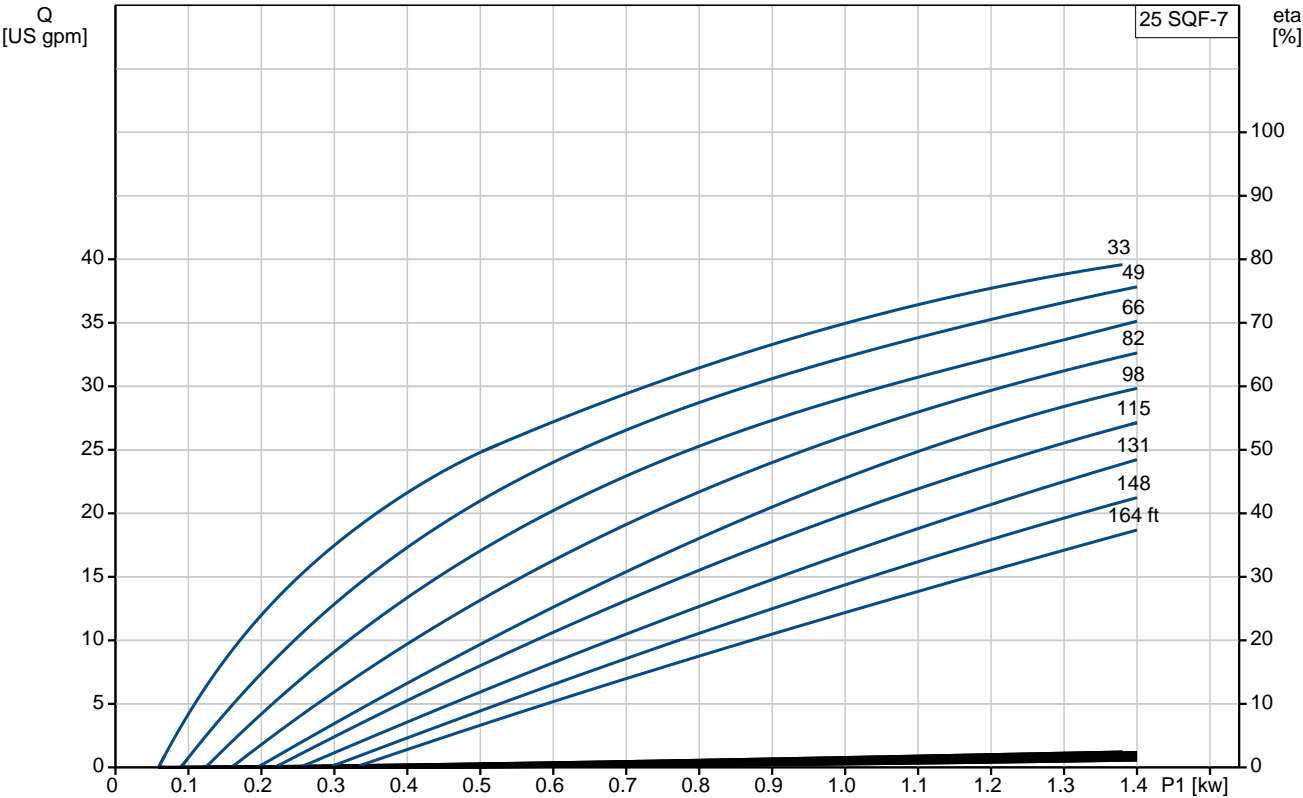


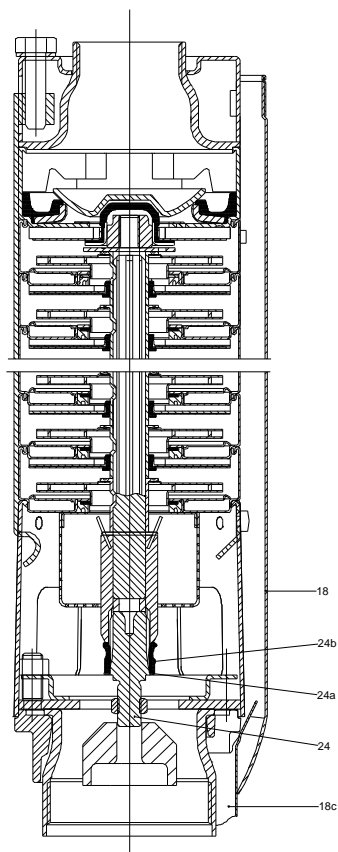
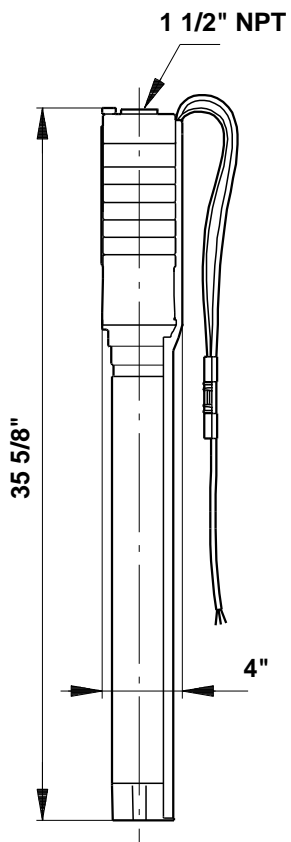
25 SQF-7

Renewable energy submersible pumps with built in inverter for solar, wind and AC powersource. Runs on both AC and DC voltage

Product photo could vary from the actual product

Conditions of Service	Pump Data	Motor Data
Flow: _____	Approvals motor: CE,RCM,EAC	Enclosure class: IP68
Head: _____	Product number: 95027353	Insulation class: F
Efficiency: _____		Motor protection: Y
Liquid: Water		Thermal protection: internal
Temperature: 68 °F		Motor type: MSF3
NPSH required: ft		
Viscosity: _____		
Specific Gravity: 1.000		





**Materials:**

Pump: Stainless steel  
DIN W.-Nr. 1.4301  
AISI 304

Impeller: Stainless steel  
DIN W.-Nr. 1.4301  
AISI 304

Rotor: DIN W.-Nr. 1.4301  
AISI 304

Stator: DIN W.-Nr. 1.4301  
AISI 304

## Tender Text



Product photo could vary from the actual product

Product No.: [95027353](#)

### 25 SQF-7

The 4" SQF centrifugal pump is for low heads and large flow rates.

The SQFlex system is a reliable water supply system based on renewable energy sources, such as solar and wind energy.

Thanks to its flexible energy supply and performance, the SQFlex system can be combined and adapted to meet any need on the installation site.

The SQFlex system has a wide voltage range, built-in maximum power point tracking (MPPT) as well as dry-running, voltage and overload protection.

#### Liquid:

Pumped liquid: Water  
Maximum liquid temperature: 104 °F  
Liquid temperature during operation: 68 °F  
Density: 62.29 lb/ft<sup>3</sup>

#### Technical:

Approvals on motor nameplate: CE,RCM,EAC

#### Materials:

Pump: Stainless steel  
DIN W.-Nr. 1.4301  
AISI 304  
Impeller: Stainless steel  
DIN W.-Nr. 1.4301  
AISI 304

#### Installation:

Maximum ambient pressure: 218 psi  
Pump outlet: 1 1/2" NPT  
Minimum borehole diameter: 4.02 in

#### Electrical data:

Motor type: MSF3  
Power input - P1: 1.4 kW  
Rated voltage AC: 1 x 90-240 V  
Rated voltage DC: 30-300 V  
Rated current: 8.4 A  
Power factor: 1,0



**Company name:**

**Created by:**

**Phone:**


**Date:**

2/22/2018

Rated speed: 500-3600 rpm  
Start. method: direct-on-line  
Enclosure class (IEC 34-5): IP68  
Insulation class (IEC 85): F  
Length of cable: 6.562 ft  
Udc: 300 V  
30 V

**Others:**

Minimum efficiency index, MEI : --  
Net weight: 19.8 lb  
Gross weight: 23.2 lb  
Shipping volume: 1 ft<sup>3</sup>

Position	Count	Description
	1	<p><b>25 SQF-7</b></p>  <p>Product photo could vary from the actual product</p> <p>Product No.: <a href="#">95027353</a></p> <p>The 4" SQF centrifugal pump is for low heads and large flow rates.</p> <p>The SQFlex system is a reliable water supply system based on renewable energy sources, such as solar and wind energy.</p> <p>Thanks to its flexible energy supply and performance, the SQFlex system can be combined and adapted to meet any need on the installation site.</p> <p>The SQFlex system has a wide voltage range, built-in maximum power point tracking (MPPT) as well as dry-running, voltage and overload protection.</p> <p><b>Liquid:</b>  Pumped liquid: Water  Maximum liquid temperature: 104 °F  Liquid temperature during operation: 68 °F  Density: 62.29 lb/ft³</p> <p><b>Technical:</b>  Approvals on motor nameplate: CE,RCM,EAC</p> <p><b>Materials:</b>  Pump: Stainless steel  DIN W.-Nr. 1.4301  AISI 304  Impeller: Stainless steel  DIN W.-Nr. 1.4301  AISI 304</p> <p><b>Installation:</b>  Maximum ambient pressure: 218 psi  Pump outlet: 1 1/2" NPT  Minimum borehole diameter: 4.02 in</p> <p><b>Electrical data:</b>  Motor type: MSF3  Power input - P1: 1.4 kW  Rated voltage AC: 1 x 90-240 V  Rated voltage DC: 30-300 V  Rated current: 8.4 A  Power factor: 1,0  Rated speed: 500-3600 rpm  Start. method: direct-on-line</p>



Company name:

Created by:

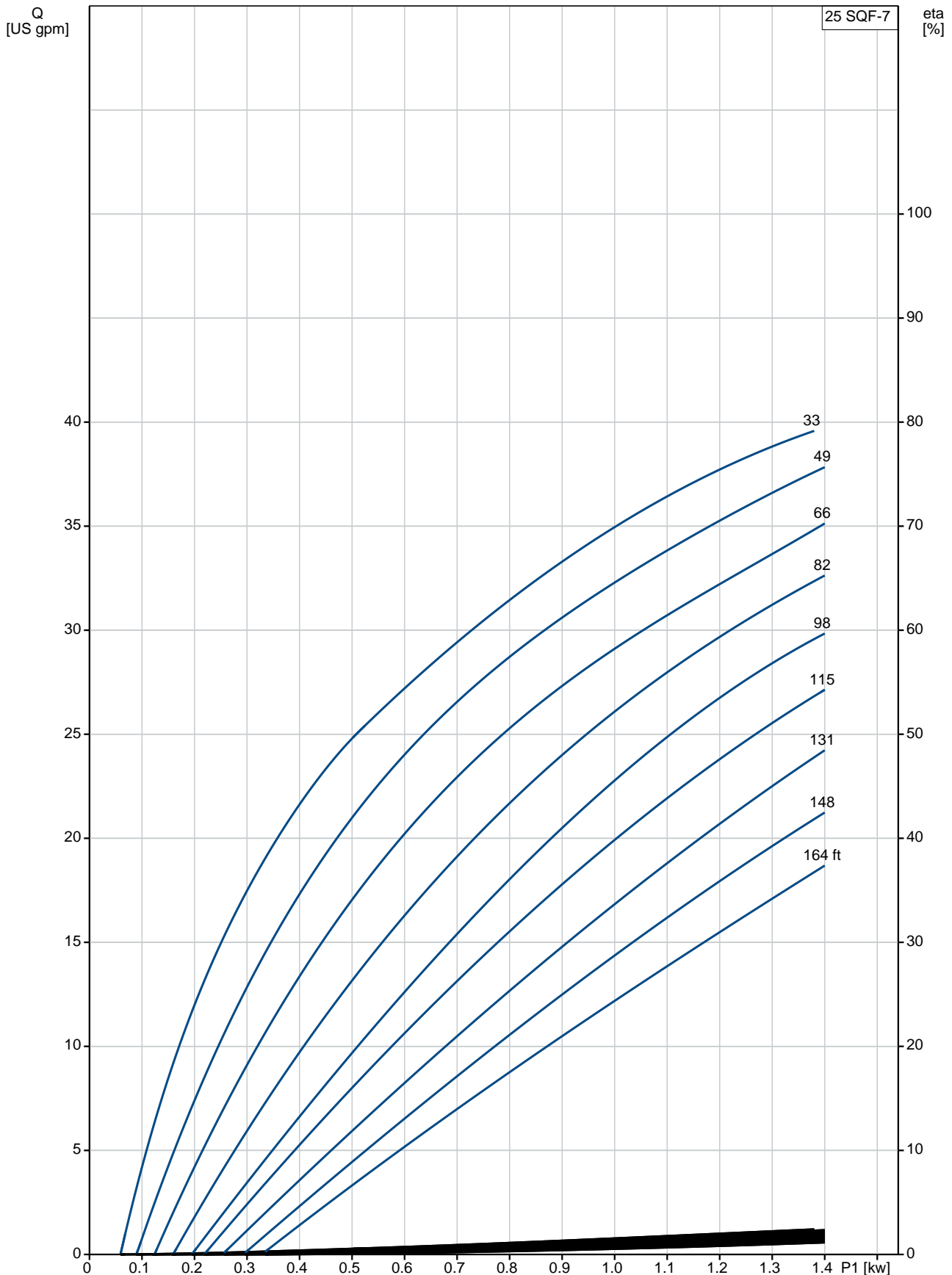
Phone:

Date:

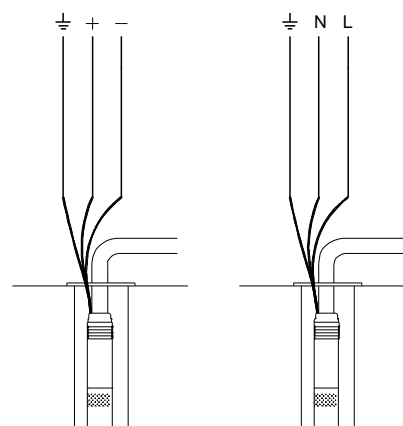
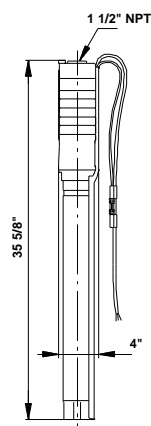
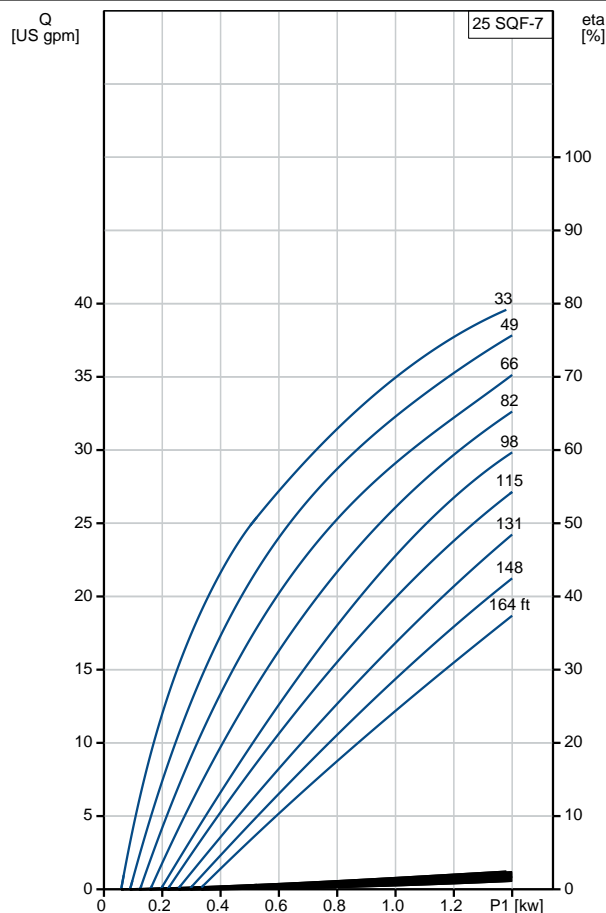
2/22/2018

Position	Count	Description
		Enclosure class (IEC 34-5): IP68 Insulation class (IEC 85): F Length of cable: 6.562 ft Udc: 300 V 30 V  <b>Others:</b> Minimum efficiency index, MEI : -- Net weight: 19.8 lb Gross weight: 23.2 lb Shipping volume: 1 ft <sup>3</sup>

## 95027353 25 SQF-7 50 Hz

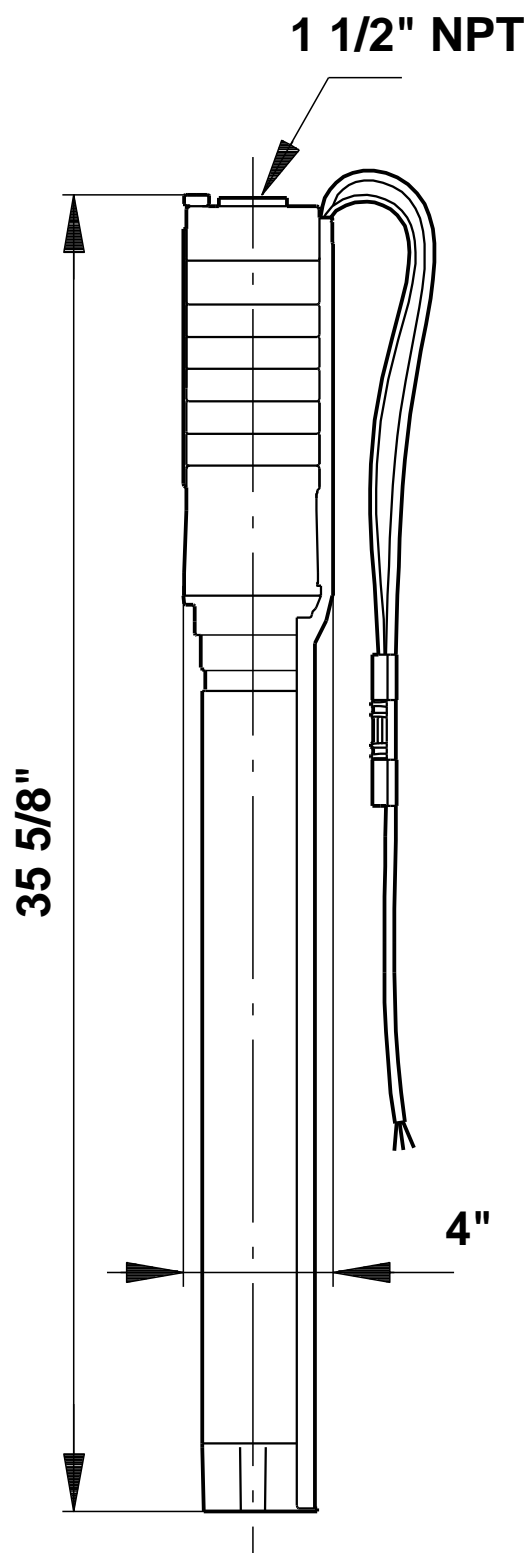


Description	Value
<b>General information:</b>	
Product name:	25 SQF-7
Product No.:	95027353
EAN:	5700834760488
<b>Technical:</b>	
Stages:	7
Approvals on motor nameplate:	CE,RCM,EAC
Pump Number:	95027395
Valve:	pump with built-in non-return valve
<b>Materials:</b>	
Pump:	Stainless steel
	DIN W.-Nr. 1.4301
	AISI 304
Impeller:	Stainless steel
	DIN W.-Nr. 1.4301
	AISI 304
Rotor:	DIN W.-Nr. 1.4301
	AISI 304
Stator:	DIN W.-Nr. 1.4301
	AISI 304
<b>Installation:</b>	
Maximum ambient pressure:	218 psi
Pump outlet:	1 1/2" NPT
Minimum borehole diameter:	4.02 in
<b>Liquid:</b>	
Pumped liquid:	Water
Maximum liquid temperature:	104 °F
Liquid temperature during operation:	68 °F
Density:	62.29 lb/ft³
<b>Electrical data:</b>	
Motor type:	MSF3
Power input - P1:	1.4 kW
Rated voltage AC:	1 x 90-240 V
Rated voltage DC:	30-300 V
Rated current:	8.4 A
Power factor:	1,0
Rated speed:	500-3600 rpm
Start. method:	direct-on-line
Enclosure class (IEC 34-5):	IP68
Insulation class (IEC 85):	F
Motor protection:	Y
Thermal protec:	internal
Length of cable:	6.562 ft
Motor Number:	98163731
Udc:	300 V
	30 V
<b>Others:</b>	
Minimum efficiency index, MEI :	---
Net weight:	19.8 lb
Gross weight:	23.2 lb
Shipping volume:	1 ft³
Sales region:	North America



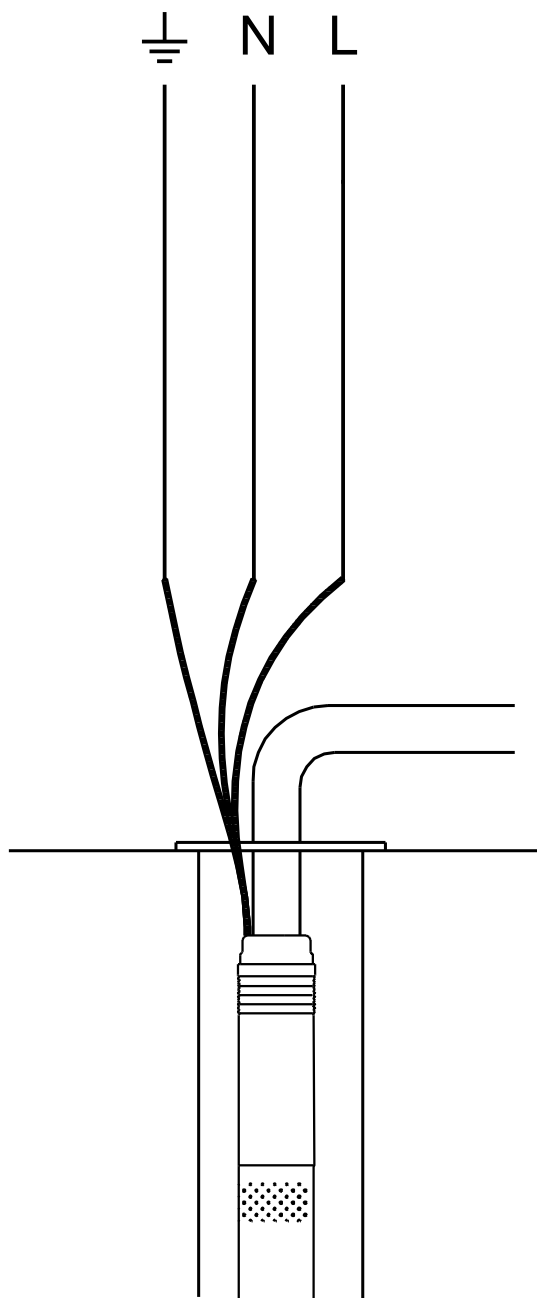
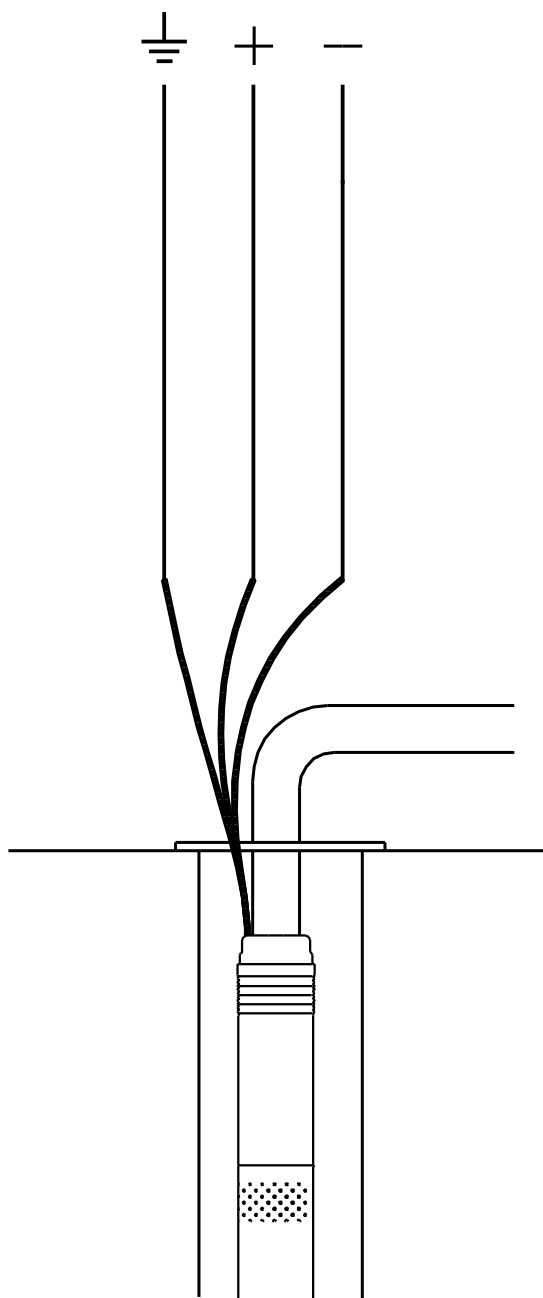


95027353 25 SQF-7 50 Hz



Note! All units are in [mm] unless otherwise stated.  
Disclaimer: This simplified dimensional drawing does not show all details.

## 95027353 25 SQF-7 50 Hz





Company name:

Created by:

Phone:

Date:

2/22/2018

---

**Order Data:**

Product name: 25 SQF-7

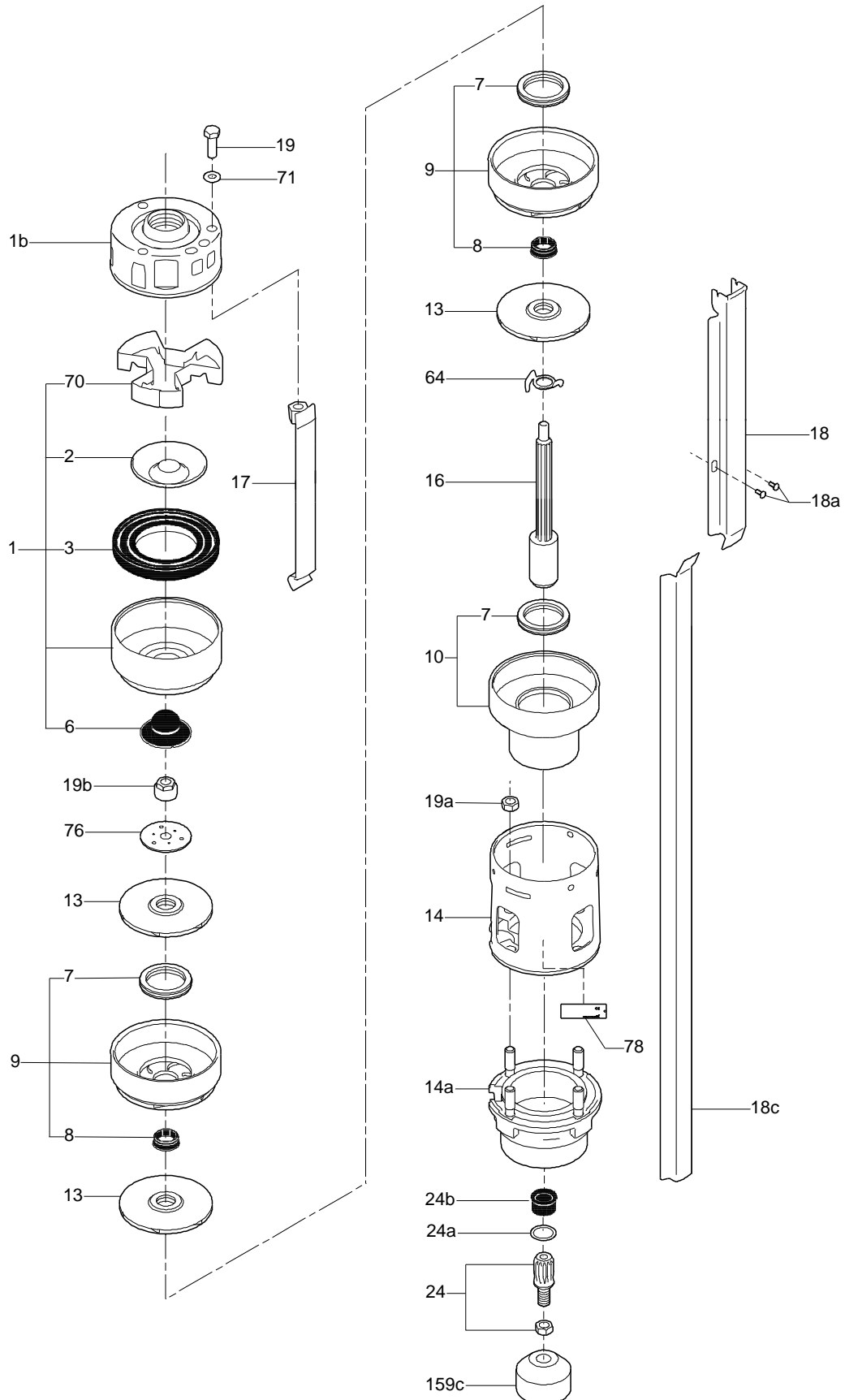
Amount: 1

Product No.: 95027353

Total: Price on request

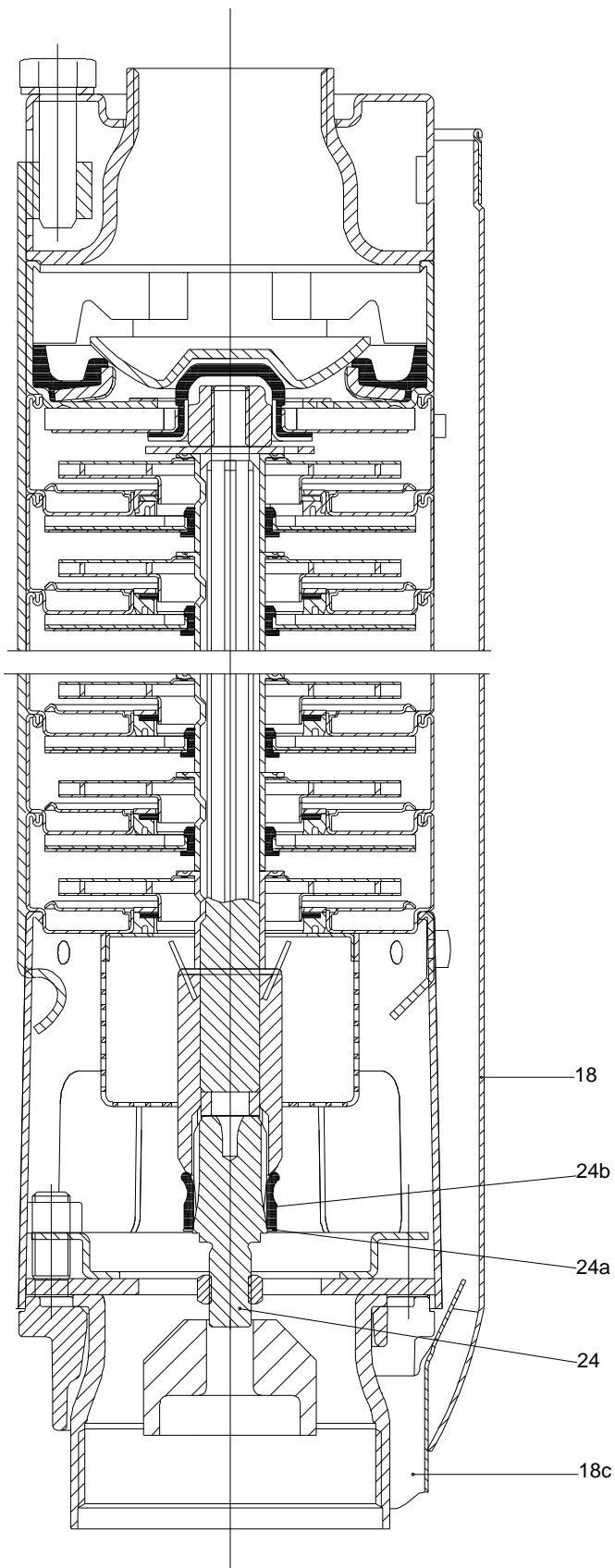
---

## Exploded view (TM034138 1706)

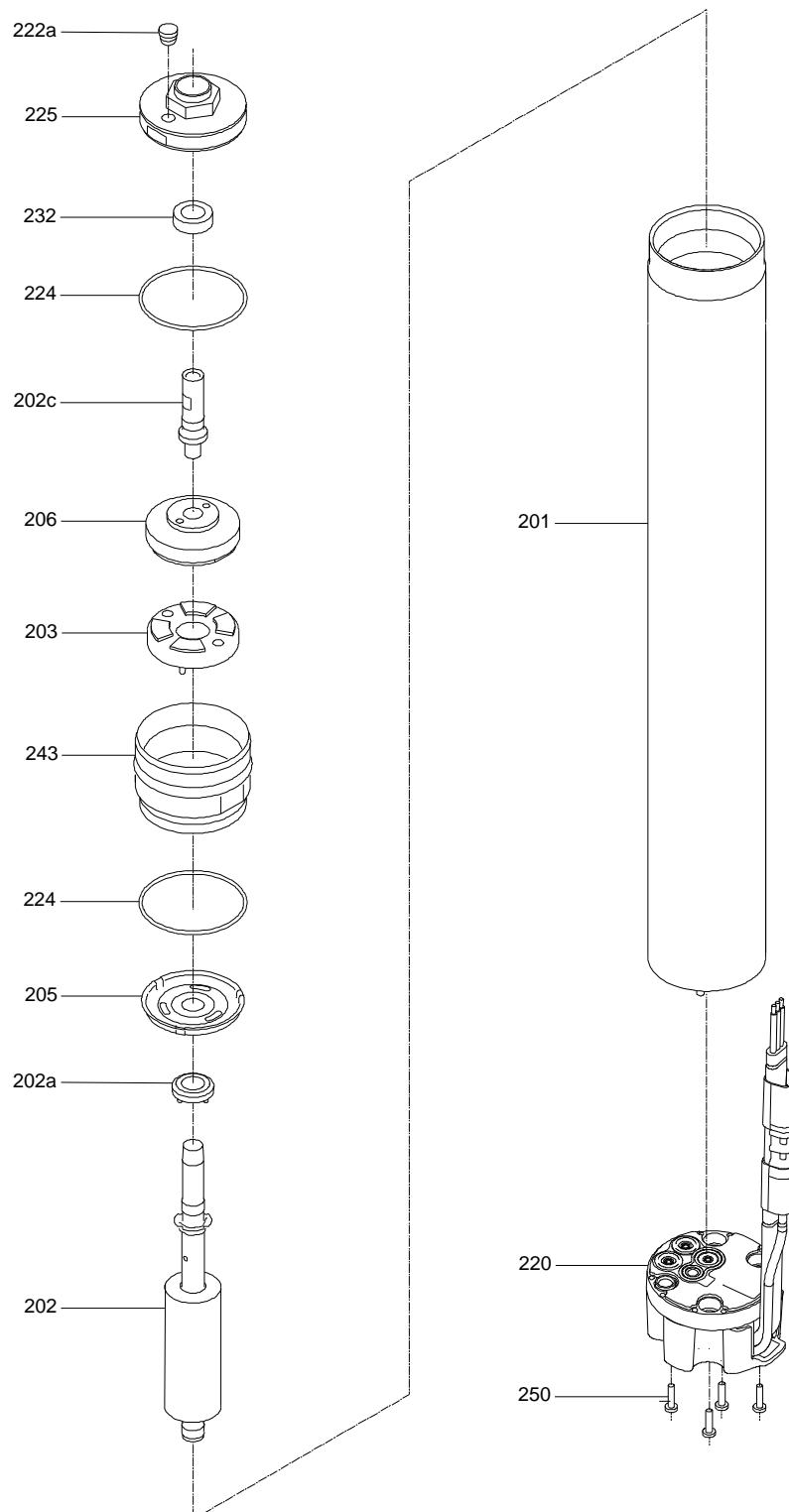


TM034138

## Sectional drawing (tm022214 3901)



## Exploded view ( TM043307)





Company name:

Created by:

Phone:

Date:

2/22/2018

**Parts list 25 SQF-7, Prod number 95027353**

**Valid from 2.7.2012 (1227)**

Position	Description	Annotation	Classification data	Part No.	Count	Unit
-	Pump w/o motor				1	pcs
	Kit, chambers				1	
-	Kit, wear parts				1	
	Nut					
	Impeller					
	Washer					
	Bearing					
7	Neck ring					
- 1	Valve casing cpl.				1	
	Valve casing					
	Bearing, top					
2	Valve cone					
3	Valve seat					
70	Valve guide					
+	Motor				1	pcs