

QUALITY IS  
MORE THAN WHAT  
MEETS THE EYE.

**EXPERIENCE**

IN EVERY VALVE



**MILWAUKEE VALVE**



# Pressed for time?

JUST PRESS, CRIMP AND TRIPLE YOUR PRODUCTIVITY<sup>1</sup>.

Reduce installation time up to 68% with Milwaukee Valve's extensive new line of UltraPress press-connection valves. Perfect for potable water, HVAC and inert gas systems, UltraPress valves quickly install without brazing, soldering or special tools. With no open flame required, water service connections can be made wet or dry for faster, easier repairs. Plus, UltraPress eliminates heat-installation costs like solder, flux, propane torches, oxygen/gas bottles and "hot" work permits.

Available in fully annealed brass, bronze and lead-free<sup>2</sup> UltraPure® alloys—in ball, gate, globe and check styles—you're sure to find the valves you need. Accessories, too, like extension, INSULATOR/MS™ and lockout handles.

See the full line of UltraPress products, additional features, full specifications, and a downloadable brochure at [www.UltraPressValves.com](http://www.UltraPressValves.com).

<sup>1</sup> Estimate based on MCAA's WebLEM (Web-based Labor Estimating Manual).

<sup>2</sup> Lead content less than 0.25%, defined as lead-free by US Senate Bill S.3874.

© 2016, Milwaukee Valve Company.

## ULTRA PRESS



16550 West Stratton Drive • New Berlin, WI 53151  
262.432.2700 • Fax 262.432.2701  
[www.MilwaukeeValve.com](http://www.MilwaukeeValve.com) • [www.UltraPressValves.com](http://www.UltraPressValves.com)





# CONTENTS

**BALL VALVES** ..... SECTION 1, PAGE 4-10

**BUTTERFLY VALVES** ..... SECTION 2, PAGE 11-13

- C Series Commercial Construction
- M Series Standard Industrial
- UltraPure® Commercial Construction For Potable Water
- H Series High-Pressure
- U Series Low-Pressure
- HP Series High-Performance
- Bronze Butterball® Butterfly

**ACTUATION** ..... SECTION 3, PAGE 14-15

**BRONZE VALVES** ..... SECTION 4, PAGE 16-20

- Gate, Page 16-17
- Globe & Angle, Page 18-19
- Check, Page 19-20

**CAST STEEL VALVES** ..... SECTION 5, PAGE 21

- Gate
- Globe
- Check

**IRON VALVES** ..... SECTION 6, PAGE 22-23

- Gate & Clip-Gate, Page 21
- Globe, Page 21
- Check Valves, Page 22

**FIRE PROTECTION VALVES** ..... SECTION 7, PAGE 24-25

**ULTRAPURE® LEAD-FREE VALVES FOR POTABLE WATER SERVICE** .. SECTION 8, PAGE 26-29

**TANK AND TRAILER VALVES** ..... SECTION 9, PAGE 30-31

**SAMPLER VALVES** ..... SECTION 10, PAGE 32

**FLOW CONTROL, MEDICAL GAS AND SPECIALTY VALVES** ..... SECTION 11, PAGE 32

**ENGINEERING & DESIGN CAPABILITIES** ..... PAGE 34-35

# BALL VALVES



BA-100TIH



BA-100 P2



BA-150H

## 2-PIECE BRONZE

### Standard Port

#### BA-100 / BA-100S

600 WOG 150 SWP, MSS SP-110, Threaded, BA-100S with Stainless Steel Ball and Stem 1/4" thru 3"

#### BA-100ELD / BA-100SELD

125 psig, MSS SP-110, Latch Lock Handle, Threaded with Exhaust Port, BA-100SELD with Stainless Steel Ball and Stem 1/4" thru 2"

#### BA-100M

600 WOG 150 SWP, MSS SP-110, Male x Female 1/4" thru 2"

#### BA-100 P2 / BA-100S P2

200 psig @ 250°F, MSS SP-110, Press X Press, BA-100S P2 with Stainless Steel Ball and Stem 1/2" thru 2"

#### BA-150 / BA-150S

600 WOG 150 SWP, MSS SP-110, Solder, BA-150S with Stainless Steel Ball & Stem 3/8" thru 3"

### Full Port

#### BA-100H

600 WOG, MSS SP-110, Threaded With Hose, Cap and Chain 1/2" and 3/4"

#### BA-150H

600 WOG, MSS SP-110, Solder With Hose, Cap and Chain 1/2" and 3/4"

#### BA-100H P1 / BA-100SH P1

200 psig @ 250°F, MSS SP-110, Press X Hose, BA-100SH P1 with Stainless Steel Ball & Stem 1/2" and 3/4"



BA-450



UPBA-100 P2 XH



BA-100 P2 TIH

continued

## 2-PIECE BRONZE

### Full Port

#### BA-400 / BA-400S

600 WOG 150 SWP, MSS SP-110, Threaded, BA-400S with Stainless Steel Ball & Stem 1/4" thru 2"

#### BA-400 P2 / BA-400S P2

200 psig @ 250°F, MSS SP-110, Press X Press, BA-400S with Stainless Steel Ball & Stem 1/2" thru 2"

#### BA-400S3

600 WOG, 250 SWP, MSS SP-110, Stainless Steel Ball & Stem, Threaded, Steam Seats 1/2" thru 2"

#### BA-450 / BA-450S

600 WOG, 150 SWP, MSS SP-110, Solder, BA-450S with Stainless Steel Ball & Stem 3/8" thru 2"

## 2-PIECE BRONZE LEAD-FREE BRONZE BALL VALVES FOR POTABLE WATER SERVICE\*

### Standard Port

#### UPBA-100 / UPBA-100S

600 WOG, MSS SP-110, Threaded, UPBA-100S with Stainless Steel Ball & Stem 1/4" thru 3"

#### UPBA-100 P2 / UPBA-100S P2

200 psig @ 250°F, MSS SP-110, Press X Press, UPBA-100S with Stainless Steel Ball and Stem 1/2" thru 2"

#### Options/Accessories

BA-100/150 / UPBA-100/150

INSULATOR Handle (TIH)

Oval Handle (OH)

Locking Oval Handle (LO)

Stainless-Steel Handle (SH)

Tee Handle (TH)

Locking Handle (LD)

Extension Handle (XH)

Extension Handle w/Memory Stop (XM)

Memory Stop (MS)

Chain Lever (CL)

#### Options/Accessories

BA-100/150 / UPBA-100/150

BA-400/450 / UPBA-400/450

INSULATOR Handle (TIH)

Oval Handle (OH)

Locking Oval Handle (LO)

Stainless-Steel Handle (SH)

Tee Handle (TH)

Locking Handle (LD)

Extension Handle (XH)

Extension Handle w/Memory Stop (XM)

Memory Stop (MS)

Chain Lever (CL)



UPBA-100H



UPBA-400 P2 TIH



UPBA-450S

**Options/Accessories**

BA-100/150 / UPBA-100/150  
 BA-400/450 / UPBA-400/450  
 INSULATOR Handle (TIH)  
 Oval Handle (OH)  
 Locking Oval Handle (LO)  
 Stainless-Steel Handle (SH)  
 Tee Handle (TH)  
 Locking Handle (LD)  
 Extension Handle (XH)  
 Extension Handle w/Memory Stop (XM)  
 Memory Stop (MS)  
 Chain Lever (CL)

continued  
**2-PIECE**  
**BRONZE LEAD-FREE**  
**BRONZE BALL VALVES**  
**FOR POTABLE**  
**WATER SERVICE\***

**Standard Port****UPBA-150 / UPBA-150S**

600 WOG, MSS SP-110, Solder,  
 UPBA-150S with Stainless Steel  
 Ball & Stem  
 3/8" thru 3"

**Full Port****UPBA-100H**

600 WOG, MSS SP-110, Threaded  
 With Hose, Cap and Chain  
 1/2" and 3/4"

**UPBA-150H**

600 WOG, Solder with Hose,  
 Cap and Chain  
 1/2" and 3/4"

**UPBA-400 / UPBA-400S**

600 WOG, MSS SP-110, Threaded,  
 UPBA-400S with Stainless Steel  
 Ball & Stem  
 1/4" thru 2"

**UPBA-100H P1**

200 psig @ 250°F, MSS SP-110,  
 Press X Hose  
 1/2" and 3/4"

**UPBA-400 P2 / UPBA-400S P2**

200 psig @ 250°F, MSS SP-110,  
 Press X Press, UPBA-400S with  
 Stainless Steel Ball and Stem  
 1/2" thru 2"

**UPBA-450 / UPBA-450S**

600 WOG, MSS SP-110, Solder,  
 UPBA-450S with Stainless Steel  
 Ball & Stem  
 1/2" thru 2"



BA-200



BA-475B



BA-480S

**Options/Accessories**

BA-200/250,  
 BA-475B/485B / UPBA-475B/485B  
 BA-480B/490B / UPBA-480B/490B  
 INSULATOR Handle (TIH)  
 (Except BA-200/250)  
 Oval Handle (OH)  
 Stainless-Steel Handle (SH)  
 Tee Handle (TH)  
 Extension Handle (XH)  
 Extension Handle with Memory Stop (XM)  
 Memory Stop (MS)

## 2-PIECE FORGED BRASS

**Standard Port****BA-200**

400 WOG 150 SWP, Threaded  
 1/4" thru 4"

**BA-250**

400 WOG 150 SWP, Solder  
 3/8" thru 3"

**Full Port****BA-475B**

600 WOG (1/4" thru 3"), 400 WOG  
 (4"), CSA/UL/FM/CGA Approved  
 to 2", Threaded  
 1/4" thru 4"

**BA-485B**

600 WOG (1/2" thru 3"), 400 WOG  
 (4"), Heavy Pattern, Solder  
 1/2" thru 4"

**BA-480B / BA-480S**

200 psig @ 250°F, Press X  
 Press, BA-480S with  
 Stainless Steel Ball & Stem  
 1/2" thru 3"

**BA-490B / BA-490S**

200 psig @ 250°F, Press X  
 Threaded, BA-490S with  
 Stainless Steel Ball & Stem  
 1/2" thru 2"

**BA-480BH / BA-480SH**

200 psig @ 250°F, Press X Hose,  
 BA-480SH with Stainless Steel  
 Ball & Stem,  
 1/2" thru 3/4"

**BA-481B**

200 psig @ 250°F, Press X  
 Press, Extension Stem with  
 Memory stop,  
 1/2" thru 3"

**BA-491B**

200 psig @ 250°F, Press X  
 Threaded, Extension stem with  
 Memory Stop,  
 1/2" thru 2"

# BALL VALVES



UPBA-475B



UPBA-480



UPBA-481B

#### Options/Accessories

BA-475B/485B / UPBA-475B/485B  
BA-480B/490B / UPBA-480B/490B  
INSULATOR Handle (TIH)  
(BA-480B/BA-490B only)  
Oval Handle (OH)  
Stainless-Steel Handle (SH)  
Tee Handle (TH)  
Extension Handle (XH)  
Extension Handle with Memory  
Stop (XM)  
Memory Stop (MS)

## 2-PIECE LEAD-FREE FORGED BRASS BALL VALVES FOR POTABLE WATER SERVICE

### Full Port

#### UPBA-475B \*

600 WOG (1/4" thru 2") 400 WOG (2-1/2" thru 3") MSS SP-110, UL/CSA Rated to 2", Threaded 1/4" thru 3"

#### UPBA-485B \*

600 WOG (1/2" thru 2") 400 WOG (2-1/2" thru 3"), MSS SP-110, Solder 1/2" thru 3"

#### UPBA-480B / UPBA-480S\*

200 psig @ 250°F, MSS SP-110, Press X Press, UPBA-480S with Stainless Steel Ball and Stem 1/2" thru 4"

#### UPBA-480BH / UPBA-480SH \*

200 PSIG @ 250°F, Press X Hose, BA-480SH with Stainless Steel Ball & Stem, 1/2" and 3/4"

#### UPBA-481B / UPBA-481S \*

200 psig @ 250°F, MSS SP-110, Press X Press, Extension Stem With Memory Stop, UPBA-481S with Stainless Steel Ball and Stem 1/2" thru 2"

#### UPBA-490B / UPBA-490S \*

200 psig @ 250°F, MSS SP-110, Press X Threaded, UPBA-490S with Stainless Steel Ball and Stem 1/2" thru 2"

#### UPBA-491B / UPBA-491S \*

200 psig @ 250°F, MSS SP-110, Press X Threaded, Extension Stem With Memory Stop, UPBA-491S with Stainless Steel Ball and Stem 1/2" thru 2"



BA-500



BA-300TIH



BA-350TE

#### Options/Accessories

BA-300/350 / UPBA-300/350  
INSULATOR Handle (TIH)  
Oval Handle (OH)  
Locking Oval Handle (LO)  
Stainless-Steel Handle (SH)  
Tee Handle (TH)  
Locking Handle (LD)  
Extension Handle (XH)  
Extension Handle w/Memory Stop (XM)  
Memory Stop (MS)  
Chain Lever (CL)

## 2-PIECE BRASS CIRCULATOR-FLANGE

### BA-500

600 WOG, 150 SWP, Full Port, Sold in Pkg. of 2, Threaded 3/4" thru 1-1/4"

### BA-550

600 WOG, 150 SWP, Full Port, Sold in Pkg. of 2, Solder 3/4" thru 1-1/4"

## 3-PIECE BRONZE BALL VALVES

### Full Port

#### BA-300 / BA-300S

600 WOG, 150 SWP, MSS SP-110, Threaded, BA-300S with Stainless Steel Ball & Stem 1/4" thru 3" \*

#### BA-300SB / BA-300SBS

600 WOG, 150 SWP Silbrazed, BA-300SBS with Stainless Steel Ball & Stem 3/4" thru 2"

#### BA-350 / BA-350S

600 WOG, 150 SWP, MSS SP-110, Solder, BA-350S with Stainless Steel Ball and Stem 3/8" thru 3"

#### BA-300 P2 / BA-300S P2

200 psig @ 250°F, MSS SP-110, Press X Press, BA-300S P2 with Stainless Steel Ball and Stem 1/2" thru 2"

#### BA-350TE / BA-350STE

600 WOG, 150 SWP, Solder, BA-350STE with Stainless Steel Ball and Stem, Tube End 1/2" thru 2"



UPBA-350

### 3-PIECE LEAD-FREE BRONZE BALL VALVES FOR POTABLE WATER

#### Full Port

#### UPBA-300 / UPBA-300S

600 WOG, MSS SP-110, Threaded, UPBA-300S with Stainless Steel Ball & Stem  
1/4" thru 3"

#### UPBA-350 / UPBA-350S

600 WOG, MSS SP-110, Solder, UPBA-350S with Stainless Steel Ball & Stem  
3/8" thru 3"

#### UPBA-300 P2 / UPBA-300S P2

200 psig @ 250°F, MSS SP-110, Press X Press, UPBA-300S P2 with Stainless Steel Ball & Stem  
1/2" thru 2"

#### Options/Accessories

##### BA-300/350 / UPBA-300/350

INSULATOR Handle (TIH)  
Oval Handle (OH)  
Locking Oval Handle (LO)  
Stainless-Steel Handle (SH)  
Tee Handle (TH)  
Locking Handle (LD)  
Extension Handle (XH)  
Extension Handle w/Memory Stop (XM)  
Memory Stop (MS)  
Chain Lever (CL)



F90SS300R-N1



F90CS150R-N1



F91CS150R-N1

#### Options/Accessories

##### F90/91

Stainless Oval Handle (OS)  
Carbon Oval Handle (OH)  
Extended Handle (XH)  
Extended Locking Handle (XLH)  
Gear Operator (GO)  
Pneumatic Actuator  
Electric Actuator  
Assemble Dry (AD)  
Chlorine Cleaned (CC)  
Oxygen Cleaned (OC)  
Grounded Ball (GB)  
Vented Ball (VB)

## UNIBODY, FLANGED-END

#### Standard Port

##### F90CS150R-N1

Class 150, TEFLON<sup>®</sup> NXT-75 Seats, Carbon Steel Body, Stainless Steel Ball & Stem, Actuator Mounting Pads  
1/2" thru 6"

##### F90CS300R-N1

Class 300, TEFLON<sup>®</sup> NXT-75 Seats, Carbon Steel Body, Stainless Steel Ball & Stem, Actuator Mounting Pads  
1/2" thru 6"

##### F90SS150R-N1

Class 150, TEFLON<sup>®</sup> NXT-75 Seats, Stainless Steel Body, Stainless Steel Ball & Stem, Actuator Mounting Pads  
1/2" thru 6"

##### F90SS300R-N1

Class 300, TEFLON<sup>®</sup> NXT-75 Seats, Stainless Steel Body, Stainless Steel Ball & Stem, Actuator Mounting Pads  
1/2" thru 6"

## UNIBODY, FLANGED-END, FIRE-SAFE

#### Standard Port

##### F91CS150R-N1

Class 150, TEFLON<sup>®</sup> NXT-75 Seats, Carbon Steel Body, Stainless Steel Ball & Stem, Fire-Safe to API 607, Actuator Mounting Pads  
1/2" thru 6"

##### F91CS300R-N1

Class 300, TEFLON<sup>®</sup> NXT-75 Seats, Carbon Steel Body, Stainless Steel Ball & Stem, Fire-Safe to API 607, Actuator Mounting Pads  
1/2" thru 6"



# BALL VALVES



F91SS150R-N1



10SSOD-02-LL

## continued UNIBODY, FLANGED- END, FIRE-SAFE

### Standard Port

#### F91SS150R-N1

Class 150, TEFLON<sup>®</sup> NXT-75 Seats, Stainless Steel Body, Stainless Steel Ball & Stem, Fire-Safe to API 607, Actuator Mounting Pads  
1/2" thru 6"

#### F91SS300R-N1

Class 300, TEFLON<sup>®</sup> NXT-75 Seats, Stainless Steel Body, Stainless Steel Ball & Stem, Fire-Safe to API 607, Actuator Mounting Pads  
1/2" thru 6"

## UNIBODY, THREADED, FIRE-SAFE

### Reduced Port

#### 10CSOD-02-LL

2000 WOG, Carbon Steel Body, Stainless Steel Ball & Stem, RPTFE Seats, Fire-Safe to API 607, Threaded  
1/4" thru 2"

#### 10SSOD-02-LL

2000 WOG, Stainless Steel Body, Stainless Steel Ball & Stem, RPTFE Seats, Fire-Safe to API 607, Threaded  
1/4" thru 2"

#### Options/Accessories

##### F91

Stainless Oval Handle (OS)  
Carbon Oval Handle (OH)  
Extended Handle (XH)  
Extended Locking Handle (XLH)  
Gear Operator (GO)  
Pneumatic Actuator  
Electric Actuator  
Assemble Dry (AD)  
Chlorine Cleaned (CC)  
Oxygen Cleaned (OC)  
Grounded Ball (GB)  
Vented Ball (VB)



F201CSN2



F201SSN2



BA3WDSLH

#### Options/Accessories

##### F20

Lever Handle (2)  
Gear Operator (3)  
Pneumatic Actuator  
Electric Actuator  
Assemble Dry (A)  
Chlorine Cleaned (C)  
Oxygen Cleaned (O)  
Vented Ball (V)  
Flat-Faced Flange (F)  
PTFE Packing (T)

## 2-PIECE, FLANGED- END, FIRE-SAFE

### F201CSN2

Class 150, TEFLON<sup>®</sup> NXT-75 Seats, Carbon Steel Body, Stainless Steel Ball & Stem, Full Port, Live Loaded Graphite Packing, Actuator Mounting Pads, Fire-Safe to API 607  
1" thru 12"

### F203CSN2

Class 300, TEFLON<sup>®</sup> NXT-75 Seats, Carbon Steel Body, Stainless Steel Ball & Stem, Full Port, Live Loaded Graphite Packing, Actuator Mounting Pads, Fire-Safe to API 607  
1" thru 12"

### F201SSN2

Class 150, TEFLON<sup>®</sup> NXT-75 Seats, Stainless Steel Body, Stainless Steel Ball & Stem, Full Port, Live Loaded Graphite Packing, Actuator Mounting Pads, Fire-Safe to API 607  
1" thru 12"

### F203SSN2

Class 300, TEFLON<sup>®</sup> NXT-75 Seats, Stainless Steel Body, Stainless Steel Ball & Stem, Full Port, Live Loaded Graphite Packing, Actuator Mounting Pads, Fire-Safe to API 607  
1" thru 12"

## DIVERTER VALVE

### Standard Port

#### BA3WDSLH

1000 WOG, Stainless Steel Body, Stainless Steel Ball & Stem, RPTFE Seats, 3-Way Port  
Diverter, Threaded Ends  
1/4" thru 2"





20BSOR-02



20SSOR-N1



BA-260

**Options/Accessories****20 series**

Stainless Oval Handle (OS)  
 Stainless Latch Lock Handle (LL)  
 Stainless-Steel Spring-Loaded Oval Handle (LO)  
 Extended Handle (XH)  
 Stainless Spring Latch-Lock Handle (LS)  
 Pneumatic Actuator  
 Electric Actuator  
 Assemble Dry (AD)  
 Grounded Ball (GB)  
 Grounded Stem (GS)  
 Vented Ball (VB)

**2-PIECE, THREADED****Standard Port****20BSOR-02**

600 WOG, Bronze Body, Stainless Steel Ball & Stem, RPTFE Seats, Actuator Mounting Pads, Threaded 1/4" thru 2"

**20BBOR-02**

600 WOG, Bronze Body, Chrome Plated Ball, Bronze Stem, RPTFE Seats, Actuator Mounting Pads, Threaded 1/4" thru 2"

**20CSOR-N1**

Carbon Steel Body, Stainless Steel Ball & Stem, TEFLON® NXT-75 Seats, Actuator Mounting Pads, Threaded 2000 WOG 1/4" thru 1", 1500 WOG 1-1/4" thru 2"

**20SSOR-N1**

Stainless Steel Body, Stainless Steel Ball & Stem, TEFLON® NXT-75 Seats, Actuator Mounting Pads, Threaded 2000 WOG 1/4" thru 1", 1500 WOG 1-1/4" thru 2"

**Full Port****BA-260**

1000 WOG, Stainless Steel Body and Ball, RPTFE Seats, Locking Handle, Threaded 1/4" thru 3"



41CSOF-02-LL



41SSOF-02-LL



22SSOR-N1

**Options/Accessories****22 series**

Stainless Oval Handle (OS)  
 Stainless Latch Lock Handle (LL)  
 Stainless-Steel Spring-Loaded Oval Handle (LO)  
 Extended Handle (XH)  
 Stainless Spring Latch-Lock Handle (LS)  
 Pneumatic Actuator  
 Electric Actuator  
 Assemble Dry (AD)  
 Grounded Ball (GB)  
 Grounded Stem (GS)  
 Vented Ball (VB)

**41 Series**

Stainless Handle (SH)  
 Stainless Oval Handle (OS)  
 Stainless Latch Lock Handle (LL)  
 Carbon-Steel Oval Handle (OH)  
 Locking Spring-Return Stainless-Steel Oval Handle (LO)  
 Extended Handle (XH)  
 Stainless Spring Latch Lock Handle (LS)

**HIGH-PRESSURE, SEAL-WELDED, FIRE-SAFE****Full Port****41CSOF-02-LL**

Carbon Steel Body, Stainless Steel Ball & Stem, Available with Socket-Weld, Extended Butt-Weld Ends and 3,000-lb. Configuration (Consult Factory), Actuator Mounting Pads, Threaded Class 900 1/2" thru 1-1/2" Class 600 2"

**41SSOF-02-LL**

Stainless Steel Body, Stainless Steel Ball & Stem, Available with Socket-Weld, Extended Butt-Weld Ends and 3,000-lb. Configuration (Consult Factory), Actuator Mounting Pads, Threaded Class 900 1/2" thru 1-1/2" Class 600 2"

**2-PIECE, SEAL-WELDED****Standard Port****22CSOR-N1**

Carbon Steel Body, Stainless Steel Ball & Stem, TEFLON® NXT-75 Seats, Actuator Mounting Pads, Threaded 2000 WOG 1/4" thru 1", 1500 WOG 1-1/4" thru 2"

**22SSOR-N1**

Stainless Steel Body, Stainless Steel Ball & Stem, TEFLON® NXT-75 Seats, Actuator Mounting Pads, Threaded 2000 WOG 1/4" thru 1", 1500 WOG 1-1/4" thru 2"

# BALL VALVES



30SOF-02



30BSOF-02



30CSOF-02



30SSOF-02-LO

## Options/Accessories

### 30 Series

Stainless Latch Lock Handle (LL)  
Locking Stainless-Steel Oval Handle (LO)  
Stainless-Steel Latch Lock Spring-Loaded Handle (LS)  
Stainless-Steel Oval Handle (OS)  
Extended Handle 2" (XH)  
Extended Handle 4 1/2" (XLH)  
Extended Handle (XH)  
Pneumatic Actuator  
Electric Actuator  
Assemble Dry (AD)  
Grounded Ball (GB)  
Grounded Stem (GS)  
Vented Ball (VB)

## 3-PIECE, THREADED

### Full Port

#### 30BBOF-02

600 WOG, Bronze Body, Chrome Plated Ball & Stem, RPTFE Seats, PTFE V-Ring Packing, Threaded, Available with Solder, Actuator Mounting Pads 1/4" thru 2"

#### 30BSOF-02

600 WOG, Bronze Body, Stainless Steel Ball & Stem, RPTFE Seats, PTFE V-Ring Packing, Actuator Mounting Pads, Threaded, Available with Solder 1/4" thru 2"

#### 30CSOF-02

1000 WOG, Carbon Steel Body, Stainless Steel Ball & Stem, RPTFE Seats, PTFE V-Ring Packing, Actuator Mounting Pads, Threaded, Available with Socket-Weld 1/4" thru 2"

#### 30SSOF-02

1000 WOG, Stainless Steel Body, Stainless Steel Ball & Stem, RPTFE Seats, PTFE V-Ring Packing, Actuator Mounting Pads, Threaded, Available with Socket-Weld 1/4" thru 2"



35RCSO-LL



35RCSO-LL

## 3-PIECE, ENCLOSED-BOLT, FIRE-SAFE

### Standard Port

#### 35RCSO-LL

2000 WOG, Carbon Steel Body, Stainless Steel Ball & Stem, TEFLON® NXT-75 Seats, Fire-Safe to API 607, Live Loaded Graphite Packing, Actuator Mounting Pads, Threaded, Available with Socket-Weld 1/4" thru 2"

#### 35RSSO-LL

2000 WOG, Stainless Steel Body, Stainless Steel Ball & Stem, Live Loaded Flexible Graphite Packing, TEFLON® NXT-75 Seats, Fire-Safe to API 607, Actuator Mounting Pads, Threaded, Available with Socket-Weld 1/4" thru 2"

### Full Port

#### 35FCSO-LL

2000 WOG, Carbon Steel Body, Stainless Steel Ball & Stem, TEFLON® NXT-75 Seats, Fire-Safe to API 607, Live Loaded Graphite Packing, Actuator Mounting Pads, Threaded, Available with Socket-Weld 1/4" thru 2"

#### 35FSSO-LL

2000 WOG, Stainless Steel Body, Stainless Steel Ball & Stem, TEFLON® NXT-75 Seats, Fire-Safe to API 607, Live Loaded Graphite Packing, Actuator Mounting Pads, Threaded, Available with Socket-Weld 1/4" thru 2"

## Options/Accessories

### 35 series

Latch Lock Handle (LL)  
Locking Stainless-Steel Oval Handle (LO)  
Extended Handle (XH)  
Pneumatic Actuator  
Electric Actuator  
Assemble Dry (A)  
Chlorine Cleaned (Stainless Only) (C)  
Oxygen Cleaned (O)



CL323E



CW323E

### C SERIES — COMMERCIAL BUTTERFLY

Concentric valve to MSS SP-67, Available in lug or wafer body. CL Series IAPMO tested and certified against NSF/ANSI 372 for lead-free\* compliance. Body: Cast Iron ASTM A126 Class B Disc: AlBr (Aluminum Bronze) Stem: 416 Stainless Steel Liner: EPDM 2" thru 12" rated at 200 WOG 14" thru 48" rated at 150 WOG

These valves are based on our M Series, but intended for commercial applications in HVAC and similar systems. The valves feature a phenolic-backed rubber seat with optimized disc and stem design for reliable sealing, low torque, and long life. C Series valves from 2" thru 12" are approved by the U.S. Coast Guard for Category A service. Lug butterfly valves 2" thru 12" are bi-directional dead-end service to 200 psig max. Valves 14" thru 24" are rated for uni-directional dead-end service to 150 psig. The valves are available with 10-position locking-lever handles (up to 12 inch) and gear operators.



MW323E



ML323E



ML223E

### M SERIES — INDUSTRIAL BUTTERFLY\*

Concentric valve to MSS SP-67, Available in lug or wafer body. Disc: Ni-plated Ductile Iron, AlBr, or Stainless Steel, nylon and epoxy-coated optional. Stem: 416 or 316 Stainless Steel. Liner: EPDM, Buna, FDA Neoprene, PTFE, Hypalon, and many other options. Body: Cast iron ASTM A126 Class B or Ductile Iron ASTM A536 65-45-12 2" thru 12" rated at 200 WOG 14" thru 48" rated at 150 WOG

These valves feature a phenolic-backed rubber seat with optimized disc and stem design for reliable sealing, low torque, and long life. 2" thru 12" are approved by the U.S. Coast Guard for Category A service. Lug butterfly valves 2" thru 12" are bi-directional dead-end service to 200 psig max. BUNA and EPDM only. All others 150 psig uni-directional field repairable. Valves 14" thru 24" rated for uni-directional dead-end service to 150 psig. The valves are available with on-board actuation direct from the factory, 10 position locking lever handles (up to 12 inch), gear operators, or other options — consult the factory.

- Available in Low Lead  
ML133E/233E/333E  
2" thru 12"

ML133E/333E  
14" thru 24"



# BUTTERFLY VALVES



ML133E/233E/333E



CL323E



## LEAD-FREE COMMERCIAL BUTTERFLY

### ML133E/233E/333E

Cast Iron Body, Lug Style, Aluminum Bronze Disc, EPDM Liner, Bi-Directional Dead-End Service 200 psig Max, IAPMO Tested and certified against NSF/ANSI 372 for "Lead-free" compliance. 2" thru 12"

### ML133E/333E

Cast Iron Body, Lug Style, Aluminum Bronze Disc, EPDM Liner, Bi-Directional Dead-End Service 200 psig Max 2" thru 12", Uni-Directional Dead-End Service 150 psig Max, 14" thru 24", IAPMO Tested and certified against NSF/ANSI 372 for "Lead-free" compliance.

### CL Series

Cast Iron Body, Lug Style, Aluminum Bronze Disc, EPDM Liner, Bi-Directional Dead-End Service 200 psig Max 2" thru 12", Uni-Directional Dead-End Service 150 psig Max, 14" thru 24", IAPMO Tested and certified against NSF/ANSI 372 for "Lead-free" compliance.



HPILCS WITH LEVER HANDLE



HPILCS WITH GEAR OPERATOR



HPILSS WITH GEAR OPERATOR

## HP SERIES HIGH PERFORMANCE BUTTERFLY

Double offset valve designed to MSS SP-68, ASME B16.34, and API 609, Category B. Available in lug or wafer body, ANSI Class 150 and 300 in sizes 2-1/2" thru 36"

Body: A216 WCB carbon steel or ASTM A351 CF8M

Stainless Steel

Disc: ASTM A351 CF8M

Stainless Steel

Stem: 17-4PH or 316

Stainless Steel

Seats: RTFE standard, Virgin PTFE, UHMWPE and other options.

These valves feature a double offset seat and disc design for superior sealing with no leakage and minimal seat contact and wear. The valves are available with on-board actuation direct from the factory, 10 position locking lever handles (up to 8 inch), gear operators on all valves, for other actuation options or accessories, consult the factory.



HL123E



HL323E

## H SERIES — HIGH-PRESSURE INDUSTRIAL BUTTERFLY

Concentric valve to MSS SP-67,  
Available in lug or wafer body.  
Body: Ductile iron ASTM A536  
65-45-12

Disc: Ni Plated DI, AlBr, or  
Stainless Steel.

Stem: 416 or 316 Stainless Steel  
Liner: EPDM, Buna, Viton.

2" thru 12" rated at 250 WOG  
14" thru 24" rated at 200 WOG

The H Series is tested and rated  
for higher-pressure services.  
H Series Valves from 2" thru 12"  
are approved by the U.S. Coast  
Guard for Category A service.  
Lug butterfly valves 2" thru 12"  
are uni-directional dead-end  
service to 200 psig max. BUNA  
and EPDM only. Valves 14" thru  
24" are rated for uni-directional  
dead end service to 150 psig.



UL123E



BB2-100



BB2-350

## U SERIES — LOW-PRESSURE BUTTERFLY

Concentric Valve to MSS SP-67,  
Available in lug or wafer body  
2" thru 12" rated at 50 WOG

The U Series is a low pressure  
version of our M Series valve,  
with a reduced interference seat  
to reduce torque. These valves  
are available with a special low  
friction coating on the liner as  
an option to further reduce  
torque and wear in dry bulk  
services. The valves are available  
with on-board actuation direct  
from the factory, 10 position  
locking lever handles (up to 12  
inch), gear operators, or other  
options — consult the factory.

## BRONZE BUTTERBALL® BUTTERFLY

### BB2-100

175 psig, Threaded  
1/4" thru 2" (1/2" thru 2" UL/CSA)

### BB2-350

175 psig, Solder  
3/8" thru 2"

### BB1-10A0

175 psig, Threaded, Actuator  
Mounting Pads  
1" thru 2"



35 SERIES BALL VALVE  
WITH PNEUMATIC ACTUATOR



F20 SERIES BALL VALVE WITH  
PNEUMATIC ACTUATOR WITH  
LIMIT SWITCH

## PNEUMATIC ACTUATION

### Actuation Options

Double-Acting Actuators  
Spring-Return Actuators  
Solenoid Valves  
Actuator Brackets  
Limit Switches  
Valve Positioners

### 2-Piece Ball Valves

Available on Threaded-End Valves.  
Available on Bronze,  
Carbon-Steel and Stainless-  
Steel Valves.  
Available on 1/2" thru 2" Valves.

### 3-Piece Ball Valves

Available on Threaded-End  
and Socket-Weld-End Valves.  
Available on Bronze,  
Carbon-Steel and Stainless-  
Steel Valves.  
Available on 1/2" thru 2" Valves.

### Flanged-End Ball Valves

Available on 150 and 300 lbs.  
Class Valves.  
Available on 1/2" thru 12" Valves.



ML SERIES BUTTERFLY VALVE WITH  
PNEUMATIC ACTUATOR



HP SERIES LUG BUTTERFLY VALVE  
WITH PNEUMATIC ACTUATOR

## continued PNEUMATIC ACTUATION

### Actuation Options

Double-Acting Actuators  
Spring-Return Actuators  
Solenoid Valves  
Actuator Brackets  
Limit Switches  
Valve Positioners

### Butterfly Valves

Available on HP Series High-  
Performance Butterfly  
Available in Wafer and Lugged  
Patterns.  
Available on 2" thru 48" Valves.  
Available on Class 150 2-1/2"  
thru 36".  
Available on Class 300 2-1/2"  
thru 36".  
Available on C and M Series  
Butterfly Valves.  
Available on Wafer and Lugged  
Patterns.  
Available on 2" thru 48".





BA-260 BALL VALVE WITH  
ELECTRIC ACTUATOR



35 SERIES BALL VALVE WITH  
ELECTRIC ACTUATOR

## ELECTRIC ACTUATION

### Actuation Options

120 Volt AC and DC Voltages  
NEMA 4 and 7 Housings  
4-20 maDC Valve Positioners  
Actuator Brackets  
Extra Limit Switches  
Reversing Actuators

### 2-Piece Ball Valves

Available on Threaded-End Valves.  
Available on Bronze,  
Carbon-Steel and Stainless-  
Steel Valves.  
Available on 1/2" thru 2" Valves.

### 3-Piece Ball Valves

Available on Threaded-End  
and Socket-Weld-End Valves.  
Available on Bronze,  
Carbon-Steel and Stainless-  
Steel Valves.  
Available on 1/2" thru 2" Valves.

### Flanged-End Ball Valves

Available on 150 and 300 lbs.  
Class Valves  
Available on 1/2" thru 12" Valves



CL SERIES BUTTERFLY VALVE WITH  
ELECTRIC ACTUATOR



HP SERIES LUG BUTTERFLY VALVE  
WITH ELECTRIC ACTUATOR

## continued ELECTRIC ACTUATION

### Actuation Options

120 Volt AC and DC Voltages  
NEMA 4 and 7 Housings  
4-20 maDC Valve Positioners  
Actuator Brackets  
Extra Limit Switches  
Reversing Actuators

### Butterfly Valves

Available on C and M Series  
Iron Butterfly Valves and HP  
Series High-Performance  
Butterfly Valves.  
Available in Wafer and Lugged  
Patterns.  
Available on 2" thru 48" valves.  
Available on Class 150 2-1/2"  
thru 36".  
Available on Class 300 2-1/2"  
thru 36".  
Available on C and M Series  
Butterfly Valves.  
Available on Wafer and Lugged  
Patterns.  
Available on 2" to 48" valves

# BRONZE VALVES



105



115



1186



UP667

## BRONZE GATE VALVES, NON-RISING STEM

### Threaded End

**105**

125 SWP-200 WOG, MSS SP-80, Threaded Bonnet  
1/4" thru 4"

**1140**

150 SWP-300 WOG, MSS SP-80, Threaded Bonnet  
1/4" thru 4"

**1141**

150 SWP-300 WOG, MSS SP-80, Union Bonnet  
1/4" thru 2"

**1176**

200 SWP-400 WOG, Stainless-Steel Seats, MSS SP-80, Union Bonnet  
1/4" thru 2"

**1186**

300 SWP-1000 WOG, Stainless-Steel Seats, MSS SP-80, Union Bonnet  
1/4" thru 2"

**UP105 \***

UltraPure Lead Free Bronze, Threaded, 300 WOG, MSS SP-80, Threaded Bonnet  
1/4" thru 2"

**UP667 \***

UltraPure Lead Free Brass, Threaded, 200 WOG, Threaded Bonnet  
1/4" thru 2"

### Solder End

**115**

125 SWP-200 WOG, MSS SP-80, Threaded Bonnet  
3/8" thru 4"



UP115



105 P2



148



148 P2

**UP115 \***

UltraPure Lead-Free Bronze, 300 WOG, MSS SP-80, Threaded Bonnet  
3/8" thru 2"

**UP668 \***

UltraPure Lead-Free Brass, Solder, 200 WOG, Threaded Bonnet  
1/4" thru 2"

Press x  
Press Ends

**ULTRA PRESS**

**105 P2**

200 psig @ 250°F, MSS SP-80, Threaded Bonnet  
1/2" thru 2"

**1141 P2**

200 psig @ 250°F, MSS SP-80, Union Bonnet  
1/2" thru 2"

**UP105 P2 \***

UltraPure Lead-Free Bronze, 200 psig @ 250°F, MSS SP-80, Threaded Bonnet  
1/2" thru 2"

## BRONZE GATE VALVES, RISING STEM

### Threaded End

**148**

125 SWP-200 WOG, MSS SP-80, Threaded Bonnet  
1/4" thru 4"

**1150**

150 SWP-300 WOG, MSS SP-80, Threaded Bonnet  
1/4" thru 4"

Press x  
Press Ends

**ULTRA PRESS**

**148 P2**

125 SWP-200 psig @ 250°F, MSS SP-80, Threaded Bonnet  
1/2" thru 2"



UP 148



1174



149

### continued BRONZE GATE VALVES, RISING STEM

#### Threaded End

##### UP148 \*

UltraPure Lead-Free Bronze,  
300 WOG, MSS SP-80,  
Threaded Bonnet  
1/4" thru 2"

##### 1152

125 SWP-200 WOG,  
MSS SP-80, Union Bonnet  
1/4" thru 3"

##### 1151

150 SWP-300 WOG, MSS SP-80,  
Union Bonnet  
1/4" thru 3"

##### 1153

200 SWP-400 WOG, Bronze  
Seats, MSS SP-80, Union Bonnet  
1/4" thru 3"

##### 1156

200 SWP-400 WOG, Cu-Ni Seat  
Ring, MSS SP-80, Union Bonnet  
1/4" thru 2"

##### 1174

200 SWP-400 WOG, Stainless-  
Steel Seat Ring, MSS SP-80,  
Union Bonnet  
1/4" thru 3"

##### 1182

300 SWP-1000 WOG, Cu-Ni Seat  
Ring, MSS SP-80, Union Bonnet  
1/4" thru 2"

##### 1184

300 SWP-1000 WOG,  
Stainless-Steel Seat Ring,  
MSS SP-80, Union Bonnet  
1/4" thru 3"

#### Solder End

##### 149

125 SWP-200 WOG, MSS SP-80,  
Threaded Bonnet  
3/8" thru 4"



1169



UP149



UP148 P2



P901

### continued BRONZE GATE VALVES, RISING STEM

#### Solder End

##### 1169

150 SWP-300 WOG,  
MSS SP-80, Union Bonnet  
3/8" thru 3"

##### UP149 \*

UltraPure Lead-Free Bronze,  
300 WOG, MSS SP-80,  
Threaded Bonnet  
3/8" thru 2"

#### Press x Press Ends

##### 148 P2

**ULTRA PRESS**

200 psig @ 250°F,  
MSS SP-80, Threaded Bonnet  
1/2" thru 2"

##### 1152 P2

200 psig @ 250°F,  
MSS SP-80, Union Bonnet  
1/2" thru 2"

##### UP148 P2 \*

UltraPure Lead-Free Bronze,  
200 psig @ 250°F, MSS SP-80,  
Threaded Bonnet  
1/2" thru 2"

### QUICK-OPENING GATE VALVES

#### Threaded Ends

##### P900

150 WSP-300 WOG, Spring-  
Loaded Handle  
1" thru 3"

##### P901

150 WSP-300 WOG, Quick-Open  
Lever Handle  
1/2" thru 4"

##### 902

150 WOG O-Ring Seal,  
Quick-Open Lever with Springs  
3/4" and 1-1/4"



# BRONZE VALVES



502



570



593A

## BRONZE GLOBE VALVES

### Threaded Ends

#### 502

125 SWP-200 WOG, MSS SP-80, Bronze Disc, Threaded Bonnet 1/8" thru 3"

#### 600

200 SWP-400 WOG, MSS SP-80, Needle Disc, Threaded Bonnet 1/8" thru 3/4"

#### 590T

150 SWP-300 WOG, MSS SP-80, PTFE Disc, Union Bonnet 1/8" thru 3"

#### 591A

150 SWP-300 WOG, MSS SP-80, SS Seat & Disc, Union Bonnet 1/4" thru 2"

#### 570

200 SWP-400 WOG, MSS SP-80, Bronze Disc, Union Bonnet 1/8" thru 3"

#### 572

300 SWP-1000 WOG, MSS SP-80, Bronze Disc, Union Bonnet 1/4" thru 2"

#### 592A

200 SWP-400 WOG, MSS SP-80, SS Seat & Disc, Union Bonnet 1/4" thru 2"

#### 593A

300 SWP-1000 WOG, MSS SP-80, SS Seat & Disc, Union Bonnet 1/4" thru 2"

#### UP502 \*

UltraPure Lead-Free Bronze, 300 WOG, MSS SP-80, Bronze Disc, Threaded Bonnet 1/8" thru 2"



1590T



UP1502



502 P2

## continued BRONZE GLOBE VALVES

### Solder Ends

#### 1502

125 SWP-200 WOG, MSS SP-80, Bronze Disc, Threaded Bonnet 3/8" thru 2"

#### 1590T

150 SWP-300 WOG, MSS SP-80, PTFE Disc, Union Bonnet 1/2" thru 3"

#### UP1502 \*

UltraPure Lead-Free Bronze, 300 WOG, MSS SP-80, Bronze Disc, Threaded Bonnet 3/8" thru 2"

### Press x Press Ends



#### 502 P2

200 psig @ 250°F, MSS SP-80, Bronze Disc, Threaded Bonnet 1/2" thru 2"

#### 590T P2

200 psig @ 250°F, MSS SP-80, PTFE Disc, Union Bonnet 1/2" thru 2"

#### UP502 P2 \*

UltraPure Lead-Free Bronze, 200 psig @ 250°F, MSS SP-80, Bronze Disc, Threaded Bonnet 1/2" thru 2"



504



595T



509T

## BRONZE ANGLE VALVES

### Threaded Ends

#### 504

125 SWP-200 WOG, MSS SP-80, Bronze Disc, Threaded Bonnet 1/4" thru 2-1/2"

#### 582

300 SWP-600 WOG, MSS SP-80, Bronze Disc, Union Bonnet 1/4" thru 2"

#### 595T

150 SWP-300 WOG, MSS SP-80, PTFE Disc, Union Bonnet 1/4" thru 2"

## BRONZE CHECK VALVES HORIZONTAL SWING CHECK

### Threaded Ends

#### 509

Bronze, 125 SWP-200 WOG, MSS SP-80, Brass Disc (1/4" - 1-1/2"), Bronze Disc (2" - 3") 1/4" thru 3"

#### 509T

Bronze, 125 SWP-200 WOG, MSS SP-80, PTFE Disc 1/4" thru 2"

#### 510T

Bronze, 150 SWP-300 WOG, MSS SP-80, PTFE Disc 1/4" thru 2"

#### 515

Bronze, 150 SWP-300 WOG, MSS SP-80, Bronze Disc 1/4" thru 2"

#### UP509 \*

UltraPure Lead-Free Bronze, 300 WOG (1/4" thru 2"), 200 WOG (2-1/2" thru 3"), MSS SP-80, Bronze Disc, Threaded 1/4" thru 3"



1509



969



UP509 P2

continued

## BRONZE CHECK VALVES HORIZONTAL SWING CHECK

#### UP967 \*

UltraPure Lead Free Brass, Brass Disc, 200 WOG 3/8" thru 3"

### Solder Ends

#### 1509

Bronze, 125 SWP-200 WOG, MSS SP-80, Bronze Disc 3/8" thru 3"

#### 1509T

Bronze, 125 SWP-200 WOG, MSS SP-80, PTFE Disc 3/8" thru 2"

#### 1510T

Bronze, 150 SWP-300 WOG, MSS SP-80, PTFE Disc (Also available w/Bronze Disc) 1/2" thru 2"

#### UP1509 \*

UltraPure Lead-Free Bronze, 300 WOG, MSS SP-80, Bronze Disc 3/8" thru 3"

#### UP968 \*

UltraPure Lead-Free Brass, 200 WOG, Brass Disc 3/8" thru 3"

### Press x Press Ends

#### 509 P2



Bronze, 200 psig @ 250°F, MSS SP-80, Brass Disc 1/2" thru 2"

#### 969

Brass, 200 psig @ 250°F, Brass Disc, Integral Seat 1/2" thru 2"

#### UP509 P2 \*

UltraPure Lead-Free Bronze, 200 psig @ 250°F, Brass Disc, MSS SP-80 1/2" thru 2"

# BRONZE VALVES



UP969



509Y



548B P2

## continued BRONZE CHECK VALVES HORIZONTAL SWING CHECK

### UP969 \*

UltraPure Lead-Free Brass,  
Brass Disc, 200 psig @ 250°F  
1/2" thru 2"

## HORIZONTAL SWING CHECK – Y PATTERN

Threaded Ends

### 507

Bronze, 300 SWP-600 WOG,  
MSS SP-80, Bronze Disc  
1/4" thru 3"

### 508

Bronze, 200 SWP-400 WOG,  
MSS SP-80, Bronze Disc  
1/4" thru 3"

### 509Y

Bronze, 125 SWP-200 WOG,  
MSS SP-80, Bronze Disc  
1/4" thru 3"

### 515Y

Bronze, 150 SWP-300 WOG,  
MSS SP-80, Bronze Disc  
1/4" thru 3"

Press x  
Press Ends



### 509Y P2

Bronze, 200 psig @ 250°F, MSS  
SP-80, Bronze Disc  
1/2" thru 2"



UP548T



1548T



UP548T P2

## SPRING-LOADED LIFT CHECK

Threaded Ends

### 548B

Bronze, 250 WOG, MSS SP-80,  
BUNA Disc  
3/8" thru 2"

### 548T

Bronze, 250 WOG, MSS SP-80,  
PTFE Disc  
3/8" thru 2"

### UP548T \*

UltraPure Lead-Free Bronze,  
PTFE Disc, 250 WOG, MSS SP-80  
3/8" thru 2"

Solder Ends

### 1548T

Bronze, 250 WOG, MSS SP-80,  
PTFE Disc  
3/8" thru 2"

### 1548B

Bronze, 250 WOG, MSS SP-80,  
BUNA Disc  
3/8" thru 2"

### UP1548T \*

UltraPure Lead-Free Bronze,  
PTFE Disc, 250 WOG, MSS SP-80  
3/8" thru 2"

Press Ends



### 548B P2

Bronze, 200 psig @ 250°F,  
MSS SP-80, Buna Disc  
1/2" thru 2"

### 548T P2

Bronze, 200 psig @ 250°F,  
MSS SP-80, PTFE Disc  
1/2" thru 2"

### UP548T P2 \*

UltraPure Lead-Free Bronze,  
200 psig @ 250°F, PTFE Disc,  
MSS SP-80  
1/2" thru 2"





1550



1560

## CAST STEEL GATE

### 1550CB2

Class 150, Flanged, API 600, ASME B16.34 Design, API 598 Tested, Available in Butt-weld, Consult Factory. 2" thru 24"

### 3050CB2

Class 300, Flanged, API 600, ASME B16.34 Design, API 598 Tested, Available in Butt-weld, Consult Factory. 2" thru 24"

### 6050CB2

Class 600, Flanged, API 600, ASME B16.34 Design, API 598 Tested, Available in Butt-weld, Consult Factory. 2" thru 12"

## CAST STEEL GLOBE

### 1560CB2

Class 150, Flanged, API 600, ASME B16.34 Design, API 598 Tested, Available in Butt-weld, Consult Factory. 2" thru 12"

### 3060CB2

Class 300, Flanged, API 600, ASME B16.34 Design, API 598 Tested, Available in Butt-Weld, Consult Factory. 2" thru 10"

### 6060CB2

Class 600, Flanged, API 600, ASME B16.34 Design, API 598 Tested, Available in Butt-Weld, Consult Factory. 2" thru 8"



1570

## CAST STEEL CHECK

### 1570CB2

Class 150, Flanged, API 600, ASME B16.34 Design, API 598 Tested, Available in Butt-Weld, Consult Factory. 2" thru 24"

### 3070CB2

Class 300, Flanged, API 600, ASME B16.34 Design, API 598 Tested, Available in Butt-Weld, Consult Factory. 2" thru 12"

### 6070CB2

Class 600, Flanged, API 600, ASME B16.34 Design, API 598 Tested, Available in Butt-Weld, Consult Factory. 2" thru 12"



F2882M

## IRON GATE

### 2882A or 2882M

125 SWP 200 WOG, Non-Rising Stem, IBBM, MSS SP-70  
A Available 2" thru 12"  
M Available 2" thru 24"

### 2882A26 or 2882M26

125 SWP 200 WOG, Non-Rising Stem, All Iron, MSS SP-70  
A Available 2" thru 12"  
M Available 2" thru 24"

### 2885A or 2885M

125 SWP 200 WOG, OS & Y, IBBM, MSS SP-70  
A Available 2" thru 12"  
M Available 2" thru 24"

### 2885A26 or 2885M26

125 SWP 200 WOG, OS & Y, All Iron, MSS SP-70  
A Available 2" thru 12"  
M Available 2" thru 12"

### 2885M13

3% Nickel Iron, OS & Y, Iron Body, SS Trim, MSS SP-70  
2" thru 12"

### 2894A or 2894M

250 WSP 500 WOG, OS & Y, IBBM, MSS SP-70  
A Available 2" thru 12"  
M Available 2" thru 12"



2894M



2887M

## IRON CLIP GATE

### 2887M

150 SWP 225 WOG, Bronze Trim, Threaded  
1/4" thru 2"  
125 SWP 175 WOG, Bronze Trim, Threaded  
2" thru 4"

### 2888M

150 SWP 225 WOG, All Iron, Threaded  
1/4" thru 2"  
125 SWP 175 WOG, All Iron, Threaded  
2-1/2" thru 4"



2981A

## IRON GLOBE

### 2981A or 2981M

125 SWP 200 WOG, MSS SP-85  
A Available 2" thru 10"  
M Available 2" thru 10"

### 2983A or 2983M

250 SWP 500 WOG, IBBM, MSS SP-85  
A Available 2-1/2" thru 6"  
M Available 2-1/2" thru 6"

### 2986M

Angle Globe, 125 SWP, 200 WOG, MSS SP-85  
2" thru 8"

### 2986M-SC

Angle Stop Check, Globe Style, 125 SWP, 200 WOG, MSS SP-85  
2" thru 8"



2974M



2974MLW



2970

## IRON CHECK

### 2974A or 2974M

125 SWP 200 WOG, IBBM, MSS  
SP-71

A Available 2" thru 12"  
M Available 2" thru 24"

### 2974MLW

125 SWP 200 WOG, IBBM,  
MSS SP-71, Lever and Weight,  
2" thru 12"

### 2974A26 or 2974M26

125 SWP 200 WOG, All Iron,  
A Available 2" thru 12"  
M Available 2" thru 24"

### 2974M13

3% Nickel Iron, 125 SWP, 200  
WOG Iron Body, Stainless-Steel  
Trim, MSS SP-71  
2" thru 12"

### 2970M

250 SWP 500 WOG, IBBM,  
MSS SP-71  
2-1/2" thru 6"



1400



1800

## SILENT CHECK

### 1400

Class 125, Wafer-Style Cast-Iron  
Body, Stainless-Steel Disc,  
Stainless-Steel Spring,  
Meets Senate Law S3874  
2" thru 10"  
(Also Available Class 250)

### 1800

Class 125, Globe-Style Cast-Iron  
Body, Stainless-Steel Disc,  
Stainless-Steel Spring, Meets  
Senate Law S3874  
2-1/2" thru 42"  
(Also Available Class 250)

## NON-SLAM CHECK

### 8800

Class 125, Wafer-Style Cast-Iron  
Body, Stainless-Steel Double Disc  
2" thru 16"

# FIRE PROTECTION VALVES



UPBBTSCS02



## LEAD-FREE BRONZE SLO-CLOSE SPRINKLER-CONTROL VALVE INDOOR/ OUTDOOR\*

### UPBBTSC

175 psig, UL/FM, Slo-Close with Position Indicator, IAPMO Tested and Certified, Less Tamper Switch, NPT-Threaded Ends 1" - 2"

### UPBBTSCS02

NPT-Threaded Ends, 175 psig, UL/FM, Slo-Close with Position Indicator, Tamper Switch 1" thru 2"



BBVSC100

## SLO-CLOSE SPRINKLER-CONTROL VALVE INDOOR/ OUTDOOR

### BB-SC100

175 psig, UL/FM, Slo-Close w/Position Indicator, Less Tamper Switch, Indoor/Outdoor, Threaded 1" thru 2-1/2"

### BB-SCS02

175 psig, UL/FM, Slo-Close w/Position Indicator, With Tamper Switch, Indoor/Outdoor, Threaded 1" thru 2-1/2"

### BBVSC100

175 psig, UL/FM, Slo-Close w/Position Indicator, Less Tamper Switch, Indoor/Outdoor, Grooved 2" and 2-1/2"

### BBVSCS02

175 psig, UL/FM, Slo-Close w/Position Indicator, With Tamper Switch, Indoor/Outdoor, Grooved 2" and 2-1/2"





2885-FP

## IRON GATE

**2885-FP**

OS & Y Bronze Trim, 175 WOG  
UL/FM  
2-1/2" thru 8"

## IRON CHECK VALVE

**2974-FP**

175 WOG, UL/FM, Rubber Disc  
2-1/2" thru 8"



2974-FP



118-FP

## BRONZE GATE VALVE WITH UL/FM TRIM

**118-FP**

OS & Y, UL/FM, NPT Threaded  
1" thru 2"

## HIGH-RISE SPRINKLER-CONTROL VALVE

**BBHSC100**

350 psig, Less Tamper Switch,  
Threaded  
1" thru 2-1/2"

**BBHSC02**

350 psig, With Tamper Switch,  
Threaded  
1" thru 2-1/2"

**BVHSC100**

350 psig, Less Tamper Switch,  
Grooved  
2" and 2-1/2"

**BVHSCS02**

350 psig, With Tamper Switch,  
Grooved  
2" and 2-1/2"



BBHSC02



BB2FP

## BUTTERBALL TRIM VALVES UL/FM

**BB2FP**

175 psig, Quarter Turn, UL-Listed,  
FM-Approved,  
NPT Threaded Ends  
1/2" thru 2"



UPBA-100TIH



UPBA-150H

#### Options/Accessories

UPBA-100/150

UPBA-400/450

INSULATOR Handle (TIH)

Oval Handle (OH)

Locking Oval Handle (LO)

Stainless-Steel Handle (SH)

Tee Handle (TH)

Locking Handle (LD)

Extension Handle (XH)

Extension Handle w/Memory Stop (XM)

Memory Stop (MS)

Chain Lever (CL)

## 2-PIECE LEAD-FREE BRONZE BALL VALVES



### Standard Port

#### UPBA-100 / UPBA-100S \*

600 WOG, MSS SP-110, Threaded,  
UPBA-100S with Stainless Steel  
Ball & Stem  
1/4" thru 3"

#### UPBA-150 / UPBA-150S \*

600 WOG, MSS SP-110, Solder,  
UPBA-150S with Stainless Steel  
Ball & Stem  
3/8" thru 3"

#### UPBA-100 P2 / UPBA-100S P2 \*

200 psig @ 250°F, MSS SP-110,  
Press X Press, UPBA-100S P2  
with Stainless Steel Ball  
and Stem  
1/2" thru 2"

### Full Port

#### UPBA-100H \*

600 WOG, Threaded with  
Hose-End, Cap and Chain  
1/2" and 3/4"

#### UPBA-150H \*

600 WOG, Solder with Hose-End,  
Cap and Chain  
1/2" and 3/4"

#### UPBA-400 / UPBA-400S \*

600 WOG, MSS SP-110, Threaded,  
UPBA-400S with Stainless Steel  
Ball & Stem  
1/4" thru 2"

#### UPBA-450 / UPBA-450S \*

600 WOG, MSS SP-110, Solder,  
UPBA-450S with Stainless Steel  
Ball & Stem  
1/2" thru 2"

#### UPBA-100H P1 \*

200 psig @ 250°F, MSS SP-110,  
Press X Hose-End  
1/2" and 3/4"



UPBA-400 P2 XH



UPBA-475B



UPBA-481BXH

#### Options/Accessories

UPBA-400/450

INSULATOR Handle (TIH)

Oval Handle (OH)

Locking Oval Handle (LO)

Stainless-Steel Handle (SH)

Tee Handle (TH)

Locking Handle (LD)

Extension Handle (XH)

Extension Handle w/Memory Stop (XM)

Memory Stop (MS)

Chain Lever (CL)

UPBA-475B/485B

UPBA-480B/490B

INSULATOR Handle (TIH)

Oval Handle (OH)

Stainless-Steel Handle (SH)

Tee Handle (TH)

Extension Handle (XH)

Extension Handle with Memory Stop (XM)

Memory Stop (MS)

continued

## 2-PIECE LEAD-FREE BRONZE BALL VALVES



#### UPBA-400 P2 / UPBA-400S P2 \*

200 psig @ 250°F, MSS SP-110,  
Press X Press, UPBA-400S P2  
with Stainless Steel Ball  
and Stem  
1/2" thru 2"

## 2-PIECE LEAD-FREE BRASS BALL VALVES\*



#### UPBA-475B \*

600 WOG (1/2" thru 2"), 400 WOG  
(2-1/2" thru 3"), MSS SP-110,  
UL/CSA Rated to 2", Threaded  
1/4" thru 3"

#### UPBA-485B \*

600 WOG (1/2" thru 2"), 400  
WOG (2-1/2" thru 3"), MSS SP-110,  
Solder  
1/2" thru 3"

### Full Port

#### UPBA-480B / UPBA-480S \*

200 psig @ 250°F, MSS SP-110,  
Press X Press, UPBA-480S with  
Stainless Steel Ball and Stem  
1/2" thru 4"

#### UPBA-480SH \*

200 psig @ 250°F, MSS SP-110,  
Press X Hose-End  
1/2" thru 3/4"

#### UPBA-481B / UPBA-481S \*

200 psig @ 250°F, MSS SP-110,  
Extension Stem With Memory  
Stop, Press X Press, UPBA-481S with  
Stainless Steel Ball and Stem  
1/2" thru 2"



UPBA-490B



UPBA-491B



UPBA-350

**Options/Accessories**

UPBA-480B/490B

UPBA-300/350

INSULATOR Handle (TIH)

Oval Handle (OH)

Stainless-Steel Handle (SH)

Tee Handle (TH)

Extension Handle (XH)

Extension Handle with Memory Stop (XM)

Memory Stop (MS)

Chain Lever (CL)

continued

## 2-PIECE LEAD-FREE BRASS BALL VALVES

**UPBA-490B / UPBA-490S \***

200 psig @ 250°F, MSS SP-110, Press X Threaded, UPBA-490S with Stainless Steel Ball and Stem  
1/2" thru 4"

**UPBA-490SH \***

200 psig @ 250°F, MSS SP-110, Press X Hose  
1/2" and 3/4"

**UPBA-491B / UPBA-491S \***

200 psig @ 250°F, MSS SP-110, Extension Stem with Memory Stop, Press X Threaded, UPBA-491S with Stainless Steel Ball and Stem  
1/2" thru 2"

## 3-PIECE LEAD-FREE BRASS BALL VALVES

Full Port

**UPBA-300 / UPBA-300S \***

600 WOG, MSS SP-110, Threaded, UPBA-300S with Stainless Steel Ball & Stem  
1/4" thru 3"

**UPBA-350 / UPBA-350S \***

600 WOG, MSS SP-110, Solder, UPBA-350S with Stainless Steel Ball & Stem  
3/8" thru 3"

**UPBA-300 P2 / UPBA-300S P2 \***

200 psig @ 250°F, MSS SP-110, Press X Press, UPBA-300S P2 with Stainless Steel Ball & Stem  
1/2" thru 2"



UP105



UP105 P2



UP667



## LEAD-FREE BRONZE GATE VALVES

Non-Rising Stem

**UP105 \***

300 WOG, MSS SP-80, Threaded Bonnet, Threaded  
1/4" thru 2"

**UP115 \***

300 WOG, MSS SP-80, Threaded Bonnet, Solder  
3/8" thru 2"

**UP105 P2 \***

200 psig @ 250°F, MSS SP-80, Threaded Bonnet, Press X Press  
1/2" thru 2"

Rising Stem

**UP148 \***

300 WOG, MSS SP-80, Threaded Bonnet, Threaded  
1/4" thru 2"

**UP149 \***

300 WOG, MSS SP-80, Threaded Bonnet, Solder  
1/2" thru 2"

**UP148 P2 \***

200 psig @ 250°F, MSS SP-80, Threaded Bonnet, Press X Press  
1/2" thru 2"



## LEAD-FREE BRASS GATE VALVES

Non-Rising Stem

**UP667 \***

200 WOG, Threaded Bonnet, Threaded  
1/4" thru 2"

**UP668 \***

200 WOG, Threaded Bonnet, Solder  
1/2" thru 2"

\* Meets Senate law S3874. IAPMO tested and certified to NSF/ANSI 372 for "lead-free" compliance.



UP502 P2



UP1502



UP509



## LEAD-FREE BRONZE GLOBE VALVES

### UP502 \*

300 WOG, MSS SP-80, Threaded  
Bonnet, Threaded  
1/8" thru 2"

### UP1502 \*

300 WOG, MSS SP-80, Threaded  
Bonnet, Solder  
3/8" thru 2"

### UP502 P2 \*

200 psig @ 250°F, Press X  
Press, MSS SP-80, Threaded  
Bonnet, Press X Press  
1/2" thru 2"



## LEAD-FREE BRONZE CHECK VALVES

### Horizontal Swing Check

### UP509 \*

300 WOG, Bronze Disc,  
MSS SP-80, Threaded  
1/4" thru 3"

### UP1509 \*

300 WOG, Bronze Disc,  
MSS SP-80, Solder  
3/8" thru 3"

### UP509 P2 \*

300 WOG, Bronze Disc,  
MSS SP-80, Press X Press  
1/2" thru 2"



UP968



UP969



UP548T P2

continued



## LEAD-FREE CHECK VALVES

### UP967 \*

Brass, 200 WOG, Brass Disc,  
Threaded  
3/8" thru 3"

### UP968 \*

Brass, 200 WOG, Brass Disc,  
Solder  
3/8" thru 3"

### UP969 \*

Bronze, 200 psig @ 250°F, Brass  
Disc, Press x Press  
1/2" thru 2"



## LEAD-FREE SPRING LOAD LIFT CHECK VALVES

### UP548T \*

PTFE Disc, 250 WOG, MSS SP-80,  
Threaded  
3/8" thru 2"

### UP1548T \*

PTFE Disc, 250 WOG, MSS SP-80,  
Solder  
3/8" thru 2"

### UP548T P2 \*

200 psig @ 250°F, PTFE Disc,  
MSS SP-80, Press X Press  
1/2" thru 2"





UPBBTSCS02W



1400



1800



## LEAD-FREE BRONZE SLO-CLOSE SPRINKLER-CONTROL VALVE INDOOR/ OUTDOOR

### UPBBTSCW

175 psig, UL/FM, Slo-Close with Position Indicator, IAPMO Tested and Certified, Less Tamper Switch, NPT-Threaded Ends 1" - 2"

### UPBBTSCS02W

NPT-Threaded Ends, 175 psig, UL/FM, Slo-Close with Position Indicator, Tamper Switch 1" thru 2"

## SILENT CHECK

### 1400

Class 125, Wafer-Style Cast-Iron Body, Stainless-Steel Disc, Stainless-Steel Spring, Meets Senate Law S3874 2" thru 10" (Also Available Class 250)

### 1800\*

Class 125, Globe-Style Cast-Iron Body, Stainless-Steel Disc, Stainless-Steel Spring, Meets Senate Law S3874 2-1/2" thru 42" (Also Available Class 250)

## NON-SLAM CHECK

### 8800

Class 125, Wafer-Style Cast-Iron Body, Stainless-Steel Double Disc 2" thru 16"



ML133E



CL323E



## LEAD-FREE COMMERCIAL BUTTERFLY

### ML133E/233E/333E

Cast Iron Body, Lug Style, Aluminum Bronze Disc, EPDM Liner, Bi-Directional Dead-End Service 200 psig Max 2" thru 12"

### ML133E/333E

Cast Iron Body, Lug Style, Aluminum Bronze Disc, EPDM Liner, Bi-Directional Dead-End Service 200 psig Max 2" thru 12", Uni-Directional Dead-End Service 150 psig Max 14" thru 24"

### CL Series

Cast Iron Body, Lug Style, Aluminum Bronze Disc, EPDM Liner, Bi-Directional Dead-End Service 200 psig Max 2" thru 12", Uni-Directional Dead-End Service 150 psig Max 14" thru 24"

\* Meets Senate law S3874. IAPMO tested and certified to NSF/ANSI 372 for "lead-free" compliance.

# TANK AND TRAILER VALVES



P-2056



P-2855E

## HOSE NOZZLE

### P-202

Bronze, Overwing Aircraft Refueling, Tank Trucks, Bronze Internal Parts, 2 Stage Fulcrum Lever, Balanced Dashpot Control, Dual Disc, Less Strainer, Cap, and Cable  
1-1/2", 2", 2-1/2" x 2"

### P-2056

Aluminum, Aircraft Refueling, Cushion Close, Tank Trucks, 135 GPM 25 psig  
Inlet Nozzle Pressure, Aluminum & Stainless Internal Parts, Conforms to MIL-N-87963 Type MD-3  
2"

## BUTTERFLY

### P-2855E

Aluminum, EPDM Liner, Tank Trucks, Bulk Plants, Dry Bulk Plants, 90° Arc, Quick Open, Available with Ductile Iron or Stainless Disc  
2" thru 6"

### P-2855H

Aluminum, Hydrin Liner, Tank Trucks, Bulk Plants, Dry Bulk Plants, 90° Arc, Quick Open, Available with Ductile Iron or Stainless Disc  
2" thru 6"

### P-2860H

Aluminum, Tank Trucks, Bulk Plants, Dry Bulk Plants, 90° Arc, Quick Open, Hydrin Liner for Air Lines and a Wide Variety of Chemicals to 300°F, Discs are Stainless Steel  
2" thru 4"



C-35551



P-900



P-902

## GATE

### C-35551 / 5551

Aluminum, Bronze Trim, Tank Trucks, Bulk Plants, Filling Stations, Rising Stem, Double Disc, Bolted Bonnet, Round Flange Ends  
3" thru 6"

### P-2699RF

Aluminum, Transport Tank, Bulk Plants, Filling Stations, Rising Stem, Split Wedge Disc, Bolted Bonnet, Round Flange Ends  
4"

### P-2671

Bronze, Tank Trucks, Bulk Plants, Filling Stations, Rising Stem, Double Disc, Threaded Bonnet, Flange Ends  
2"

### P-900

Bronze, Quick Opening, Hazardous Liquid, 150 SWP, Lever Operated, Double Disc, Gland Packed  
1" thru 3"

### P-901

Bronze, Quick Opening, Double Disc, Gland Packed, 150 SWP, 300 lb. WOG, Lever Operated  
1/2" thru 4"

### 902

Bronze, Quick Opening, Tank Trucks, Bulk Plants, 150 WOG, Lever Operated, Double Disc, O-Ring Stem Packed  
3/4" and 1-1/4"



P-509



P-717



P-728

## CHECK

### P-509

Bronze, Horizontal Swing, Tank, Dry Bulk Trucks, Bronze Disc, Threaded Cap, Threaded Ends  
1/4" thru 3"

### P-509S

Bronze, Horizontal Swing, Tank, Dry Bulk Trucks, Composition Disc, Threaded Cap, Threaded Ends  
1/4" thru 2"

### P-2519A

Swing Check, Aluminum, Dry Bulk Transports, Tank Truck, Aluminum Disc with Viton Seat, 150 WOG  
3"

### P-717F

Angle Lift Check, Aluminum, 125 psig WOG at 100°F, 25 psig WOG at 350°F, Square Bolted Cap, Square Flange, Viton Disc  
2-1/2"

### P-717S

Angle Check, Bronze, 125 psig, WOG at 100°F, 25 psig WOG at 350°F, Threaded Cap, Viton Disc, Threaded Ends,  
2"

### P-728

Lift Check, Aluminum, Dry Bulk Transports, Tank Trucks, 125 psig WOG at 100°F, 25 psig at 350°F, Spring Loaded, Viton Disc, Threaded Ends  
3"

### P-729

Lift Check, Aluminum, Dry Bulk Transports, Tank Trucks, 125 psig WOG at 100°F, 25 psig at 350°F, Spring Loaded, Viton Disc, Flanged Ends  
3"



P-612A

## RELIEF

### P-612A

Aluminum, Bulk Tank Truck, Pneumatic Conveyor Systems, Railroad Dry Bulk Tanks, NPT Threaded Inlet, Settings from 6 psig to 30 psig  
2"



505-001

### GLOBE SAMPLER VALVES

#### 505-001

Bronze Body, 200 WOG, Threaded Ends, Teflon Disc, 1/2", 3/4", 1", 1-1/2", 2"

#### 505-202

Bronze Body, 200 WOG, Teflon Disc, Threaded Ends, Complete with 3/8" Sampling Device 1", 1-1/2", 2"

#### 506-202

Bronze Body, Offset Flange Inlet, Threaded Outlet, Teflon Disc, 300 WOG, Complete with 3/8" Sampling Device 1" and 2"



P-2641

### GATE SAMPLER VALVE

#### P-2641

Bronze Body, 300 WOG, Flanged Ends, Solid Wedge, Screwed Bonnet, Non-Rising Stem With Gland Packing, Available with 3/8" Sampling Device P2641B3 2"



FC200

### CONTROL VALVES

FC200 Series, Brass, 2-Way, 600 WOG, Linear Characteristics, Integral Mounting Pads, Sizes 1/2" - 2"

FC300 Series, Brass, 3-Way, 600 WOG, Linear Characteristics, Integral Mounting Pads 1/2" - 2"



FC300



MG SERIES

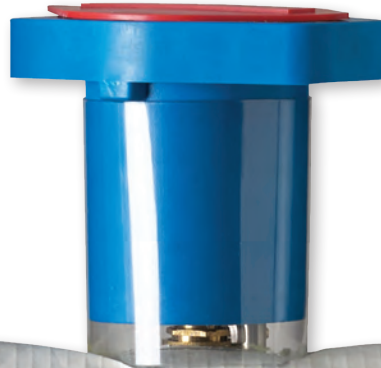
### MEDICAL GAS VALVES

MG Series, 3-Piece Bronze Ball Valve with Extended Copper-Tube Ends, customized to meet individual requirements 1/2" - 2"



PREVENTS CONDENSATION

# Do you need an insulating valve handle that **DOES IT ALL?**



**EASY-ADJUST MEMORY STOP**



Easy Field  
Adjustment

**THE INSULATOR/MS™**  
A Milwaukee/Hammond Valve Product

## **NO SWEAT.**

INSULATOR/MS™ from Milwaukee Valve is the only insulating ball valve handle that does it all – controls condensation, has reliable memory stop, and saves time since there's no need to disassemble for adjustments.

INSULATOR creates a heat transfer barrier between the piping system and the exposed portion of a valve handle and surrounding air. This eliminates or reduces condensation, and keeps damaging moisture from infiltrating insulated systems. And its operating range of +15° F to +250° F lets you spec multiple project types with one versatile product.

INSULATOR's unique memory stop adjusts easily with a few quick turns of a hex wrench, while competitive handles require time-consuming disassembly to perform stop adjustments.

INSULATOR is available on all 1/2" thru 2" bronze, brass and UltraPure ball valves, including solder, threaded and UltraPress press-fit ends. For specs and other info, visit [MilwaukeeValve.com](http://MilwaukeeValve.com), [HammondValve.com](http://HammondValve.com) or [UltraPureNoLeadValves.com](http://UltraPureNoLeadValves.com).

**INNOVATION**  
IN EVERY VALVE



## QUALITY IS MORE THAN WHAT MEETS THE EYE.

For the most part, engineering is invisible. Engineers or contractors know what a valve looks like, and knows what it does, but typically, they can't see the superiority designed into each and every Milwaukee Valve product. Milwaukee Valve demands excellence in our engineering department, with groups operating in each of our facilities to support the manufacturing of all products. These engineers provide design services as well, translating the critical specifications and processes into manufactured items — a key step where other suppliers, without our depth of experience, often fall flat.



Milwaukee Valve's well-staffed engineering department is supported by state-of-the-art computer tools, from 3D design using Solidworks, to finite element analysis (FEA) using COSMOS, to computational fluid dynamics (CFD) using CF Design software, to automated data acquisition in our laboratories using Labview. We operate our own fire-test facility to help us achieve and maintain the most advanced fire-safe designs to the latest API and other standards. We translate our 3D designs directly to tool paths, both on our shop floor and in our pattern shop, which supports our in-house foundry operation. These capabilities also service our engineering and contracting customers, who use these models in their equipment and building designs.



In addition, Milwaukee Valve has extensive experience in the development of products for specific OEMs or demanding service conditions. Some are minor modifications to existing products. Others are turnkey product-development projects designed to meet the demanding safety needs or harsh application requirements of a specific user.

Milwaukee Valve's background in the Commercial, Industrial, and very specialized Marine business for the United States Navy should provide you with confidence to entrust your most difficult engineering applications to our experienced staff, helping you grow your business and providing you with the great service you deserve.

If you have a service that is constantly causing you concern, give us a call. Our application engineering and technical service teams stand ready to help.



For more information on our capabilities or assistance with a specific problem, contact your Milwaukee Valve sales representative

(<http://www.milwaukeevalve.com/index.php/rep>s).

Their experience and industry knowledge will simplify finding a solution to your product and application requirements.

This condensed catalog is not a complete depiction of Milwaukee Valve's products or capabilities. Please contact the factory for special service conditions or additional accessories and options.

## WEBSITE REDUCES ERRORS AND SAVES TIME

Simplify your projects and reduce ordering errors by building your own valves, courtesy of Milwaukee Valve's online Advanced Search feature.



You know the service, and Milwaukee Valve has the valves and the options to solve your service issues. Found at [www.MilwaukeeValve.com](http://www.MilwaukeeValve.com), the Advanced Search function acts as an online configurator, laying out all available options in one easy-to-use format. You select the type of valve you require, and choose the available materials, sizes, options, etc. Once all options are selected, you are given the model numbers for the valves that meet your criteria. When you know exactly what you are ordering, the result is fewer returns, lower shipping costs, and all-around time savings. The Advanced Search is especially beneficial in selecting Butterfly and Industrial valves, which both offer thousands of different valve and option combinations.

In addition, the website contains specification data for virtually every Milwaukee Valve product, and has the capacity to produce product submittals, access 2D and 3D CAD files, and is a repository for a wide variety of product information, including price lists, literature downloads, technical service bulletins, competitive cross reference and even provides links to YouTube instruction and installation videos.

And if you require assistance in selecting a valve, ball, seat, actuation or any of many other options, assistance is available from your Milwaukee Valve sales representative. Try it out at [www.MilwaukeeValve.com](http://www.MilwaukeeValve.com).



**MILWAUKEE VALVE**

16550 West Stratton Drive,  
New Berlin, WI 53151  
Phone 262-432-2700 • Fax 262-432-2701  
[www.MilwaukeeValve.com](http://www.MilwaukeeValve.com)