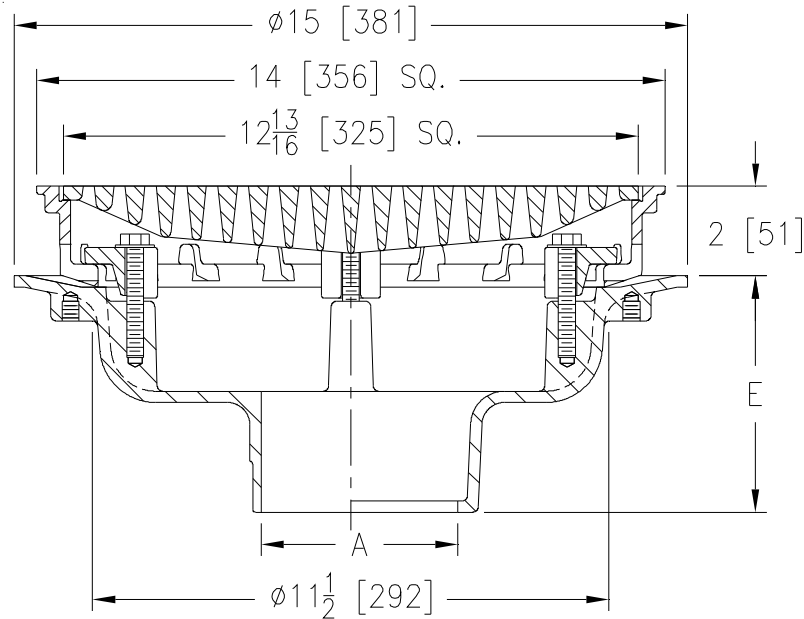


**Z150****14 [356] SQUARE TOP PROM-DECK DRAIN W/
HEEL-PROOF GRATE & ROTATABLE FRAME****SPECIFICATION SHEET****TAG** _____

Dimensional Data (inches and [mm]) are Subject to Manufacturing Tolerances and Change Without Notice



A- Pipe Size In. [mm]	Approx. Wt. Lbs. [kg]	Grate Open Area Sq. In. [cm ²]
2, 3, 4 [51, 76, 102]	53 [24]	44 [284]
6 [152]		
8 [203]	54 [24]	

ENGINEERING SPECIFICATION: ZURN Z150

14" [356mm] Square Top Prom-Deck drain. Dura-Coated cast iron body with rotatable square promenade frame with seepage openings, frame clamps and heavy-duty heel-proof grate.

OPTIONS (Check/specify appropriate options)**PIPE SIZE**

3, 4, 6 [76, 102, 152]
2, 3, 4, 6, 8 [51, 76, 102, 152, 203]
2, 3, 4, 6, 8 [51, 76, 102, 152, 203]
2, 3, 4 [51, 76, 102]

(Specify size/type) OUTLET

___ IC Inside Caulk
___ IP Threaded
___ NH No-Hub
___ NL Neo-Loc

E BODY HT. DIM.

5-1/4 [133]
3-3/4 [95]
5-1/4 [133]
4-9/16 [116]

PREFIXES

___ Z D.C.C.I. Body with Top*
___ ZB D.C.C.I. Body with Polished Bronze Top (Add 3/16 [5] to 2 [51] Dim & 3/8 [10] to 14 [356] Dim.)
___ ZN D.C.C.I. Body with Polished Nickel Bronze Top (Add 3/16 [5] to 2 [51] Dim. & 3/8 [10] to 14 [356] Dim.)

SUFFIXES

___ -AR Acid Resistant Epoxy Coated	___ -G Galvanized Cast Iron
___ -C Underdeck Clamp	___ -R Roof Sump Receiver
___ -DE Deck Extension	___ -S Secondary Strainer
___ -DG Duresist Grate	___ -SC Secondary Clamp Collar
___ -DP Top-Set® Roof Deck Plate (Replaces both the -C and -R)	___ -TC Neo-Loc Test Cap Gasket (2, 3, 4 [51, 76, 102] NL Bottom Outlet Only)
___ -DR Top-Set® Drain Riser (Adjustment from 3-5/8 [92] to 7-1/4 [184])	___ -TS Top Secured with Slotted Screws
___ -DT Decorative Polished Top (ZB and ZN Only)	___ -VP Vandal-Proof Secured Top
___ -E Static Extension 1 [25] thru 4 [102] (Specify Ht.)	___ -XJ Vertical Expansion Joint (See Z190)
___ -EA Adjustable Extension Assembly 2-1/8 [54] thru 3-1/2 [89]	___ -Y Sediment Bucket
___ -EB Top-Set® Adjustable Extension Assembly	___ -85 Stainless Steel Perforated Extension
	___ -90 90° Threaded Side Outlet Body (2, 3, 4, 6 [51, 76, 102, 152])

* Regularly furnished unless otherwise specified.