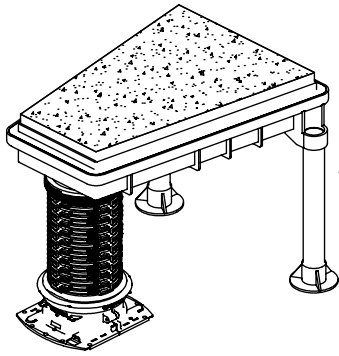
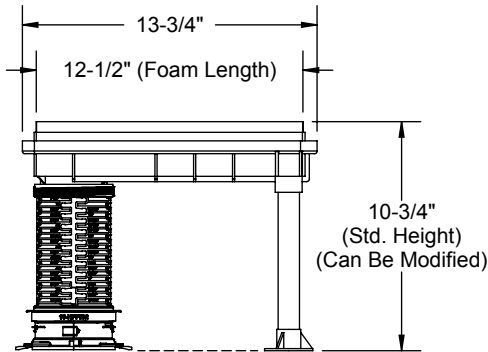
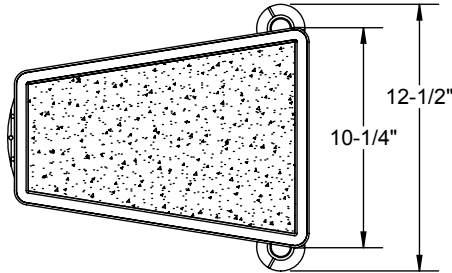


PRODUCT SPECIFICATION DRAWING

Hydroflame Pro Series - Tub Box



Tub Box Assy



| Technical Data for HydroFlame Pro Firestop Device | |
|---|---|
| Product Test Criteria | |
| UL Fire Tested & Listed to UL1479 (ASTM E814) & CAN/ULC S115 | |
| UL Ratings (consult individual product specs & UL Systems): | |
| "L": Yes; "F": 3 Hrs. typical; "W": Yes (UL system may require caulk) | |
| Intumescent Fire Wrap Physical Properties, Performance | |
| Contains no solvents or carcinogenic fillers | |
| Color: | Gray/Black |
| Material shelf/store life: | Indefinite |
| Heat Expansion begins: | ~375°F (191°C) |
| Greatest Expansion: | 575°F-1100°F (302°C - 593°C) |
| Constrained Expansion: | ≥18 times volume |
| Free Expansion: | ≥37 times volume |
| Expansion after accelerated weathering (tested to UL 1479): | |
| Temperature aging: | Pass - 270 days @ 158°F (70°C) |
| High humidity aging: | Pass - 180 days @ 97-100% humidity, 95°F (35°C) |
| Surface Burning Indices (Per ASTM E84/UL 723): | |
| Flame spread: | 5 |
| Smoke developed: | 5 |



The **HOLDRITE® Hydroflame Pro Series "Tub Box"** is a UL-Listed firestop device for bathtub drains. Metallic or non-metallic drain piping can be used. Thin wall drain piping requires a rubber tub box donut (included with the #HFP-TW-0200 Kit). Nominal IPS sized drain piping does not provide a rubber donut (not included with the #HFP-NP-0200 Kit). The nominal IPS size donut is optional and can be purchased separately (#HFPTB-1.5 NP). Standard tub box assembled height is 10-3/4". Kit can be cut shorter or sleeve extensions #HFPE2 can be added to make the tub box taller.

Product Information:

- Material:
 - Tub Box Body, Leg Feet, Box Adapter: ABS
 - Rear Legs: PVC
 - Box Insert: Expanded Polystyrene or similar
 - Sleeve: See material listed on Spec. Sheet for #HFP-P2 Sleeve.
- Patented & Patents Pending
- See Hydroflame Pro Series Installation Instructions, Best Practices documents and the latest UL Fire Resistive Directory file (R25101) for details.



INTERNATIONAL FIRESTOP COUNCIL
"The Standard of Firestop Expertise"



HOLDRITE®
HYDROFLAME™
PRO SERIES

THIS INFORMATION IS PROPRIETARY TO HOLDRITE AND IS SUBJECT TO CHANGE WITHOUT NOTICE. IT MAY NOT BE REPRODUCED IN PART OR WHOLE WITHOUT WRITTEN AUTHORIZATION.

Product Submittal

| | |
|--------------------|------|
| Job Name: | |
| Date: | |
| Part Number: | Qty: |
| | |
| Architect / Owner: | |
| | |
| Contractor: | |
| | |
| Notes: | |
| | |
| | |

System No. F-B-2043 XHEZ.F-B-2043 Through-penetration Firestop Systems

[Page Bottom](#)

Design/System/Construction/Assembly Usage Disclaimer

- Authorities Having Jurisdiction should be consulted in all cases as to the particular requirements covering the installation and use of UL Certified products, equipment, system, devices, and materials.
- Authorities Having Jurisdiction should be consulted before construction.
- Fire resistance assemblies and products are developed by the design submitter and have been investigated by UL for compliance with applicable requirements. The published information cannot always address every construction nuance encountered in the field.
- When field issues arise, it is recommended the first contact for assistance be the technical service staff provided by the product manufacturer noted for the design. Users of fire resistance assemblies are advised to consult the general Guide Information for each product category and each group of assemblies. The Guide Information includes specifics concerning alternate materials and alternate methods of construction.
- Only products which bear UL's Mark are considered Certified.

XHEZ - Through-penetration Firestop Systems

XHEZ7 - Through-penetration Firestop Systems Certified for Canada

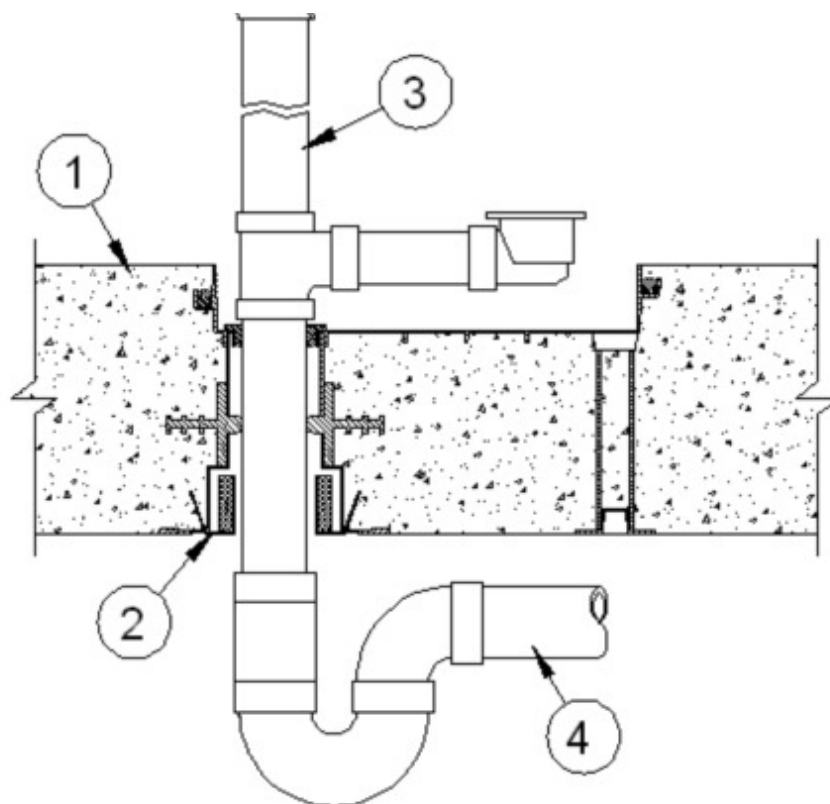
[See General Information for Through-penetration Firestop Systems](#)

[See General Information for Through-penetration Firestop Systems Certified for Canada](#)

System No. F-B-2043

September 12, 2016

| ANSI/UL1479 (ASTM E814) | CAN/ULC S115 |
|---|--|
| F Rating — 3 Hr | F Rating — 3 Hr |
| T Rating — 2 Hr | FT Rating — 2 Hr |
| L Rating At Ambient — Less Than 1 CFM/sq ft | FH Rating — 3 Hr |
| L Rating At 400 F — Less Than 1 CFM/sq ft | FTH Rating — 2 Hr |
| W Rating — Class 1 | L Rating At Ambient — Less Than 5.1 L/s/m ² |
| | L Rating At 400 F — Less Than 5.1 L/s/m ² |



1. **Floor Assembly** — Min 7 in. (179 mm) thick reinforced lightweight or normal weight (100-150 pcf or 1600-2400 kg/m³) concrete.

2. **Firestop Device* — Tub Box** — Nom 12-1/2 in. (318 mm) long by 2 in. (51 mm) deep nonmetallic tub box with adjustable legs and intumescent coupling. Cast in place firestop device attached to form and permanently embedded during concrete placement or grouted in concrete assembly in accordance with accompanying installation instructions. Min concrete thickness of 4-1/2 in. (51 mm) shall be maintained below tub box. For Conf A HFP devices and optional accessories (not shown) includes sleeve extension installed in accordance with installation instructions.

SECURUS INC, DBA HOLDRITE — (Config A) HydroFlame HFPTB-NP-0200, HFPTB-TW-0200 or (Config B) HydroFlame TBS-TW-0150, HydroFlame TBS-NP-0150

3. **Waste/Overflow Fitting — (Conf A)** - Nom 1-1/2 in. (38 mm) diam thin-wall PVC waste/overflow fitting and drain tube inserted in and secured to top of tub box base using drain seal bushing supplied with firestop device. **(Conf B)** - Nom 1-1/2 in. (38 mm) diam thin-wall PVC waste/overflow fitting and drain tube inserted in and secured to top of tub box base using drain seal bushing supplied with firestop device.

3A. **Alternate Waste/Overflow Fitting** — (Not Shown) — Nom 1-1/2 in. (38 mm) diam Schedule 40 polyvinyl chloride (PVC) waste/overflow fitting and drain pipe. **(Conf A)**, Drain tube of waste/overflow fitting secured in top (optional) of tub box base using drain seal bushing supplied with firestop device or waste/overflow fitting inserted through tub box and base. **(Conf B)**, Nom 1-1/2 in. (38 mm) diam Schedule 40 polyvinyl chloride (PVC) waste/overflow fitting and drain pipe cemented together and inserted through base of tub box.

4. **Drain Piping** — Nom 1-1/2 in. (38 mm) or 2 in. (51 mm) diam Schedule 40 PVC, Schedule 40 ABS, cast iron or copper drain piping with the appropriate fittings/bushings for connection to the waste/overflow fitting. Drain piping rigidly supported away from tub box with suitable hangers.

*** Indicates such products shall bear the UL or cUL Certification Mark for jurisdictions employing the UL or cUL Certification (such as Canada), respectively.**

Last Updated on 2016-09-12

[Questions?](#)

[Print this page](#)

[Terms of Use](#)

[Page Top](#)

© 2016 UL LLC

The appearance of a company's name or product in this database does not in itself assure that products so identified have been manufactured under UL's Follow-Up Service. Only those products bearing the UL Mark should be considered to be Certified and covered under UL's Follow-Up

System No. F-B-1018 XHEZ.F-B-1018 Through-penetration Firestop Systems

[Page Bottom](#)

Design/System/Construction/Assembly Usage Disclaimer

- Authorities Having Jurisdiction should be consulted in all cases as to the particular requirements covering the installation and use of UL Certified products, equipment, system, devices, and materials.
 - Authorities Having Jurisdiction should be consulted before construction.
 - Fire resistance assemblies and products are developed by the design submitter and have been investigated by UL for compliance with applicable requirements. The published information cannot always address every construction nuance encountered in the field.
 - When field issues arise, it is recommended the first contact for assistance be the technical service staff provided by the product manufacturer noted for the design. Users of fire resistance assemblies are advised to consult the general Guide Information for each product category and each group of assemblies. The Guide Information includes specifics concerning alternate materials and alternate methods of construction.
 - Only products which bear UL's Mark are considered Certified.
-

XHEZ - Through-penetration Firestop Systems

[See General Information for Through-penetration Firestop Systems](#)

System No. F-B-1018

September 12, 2016

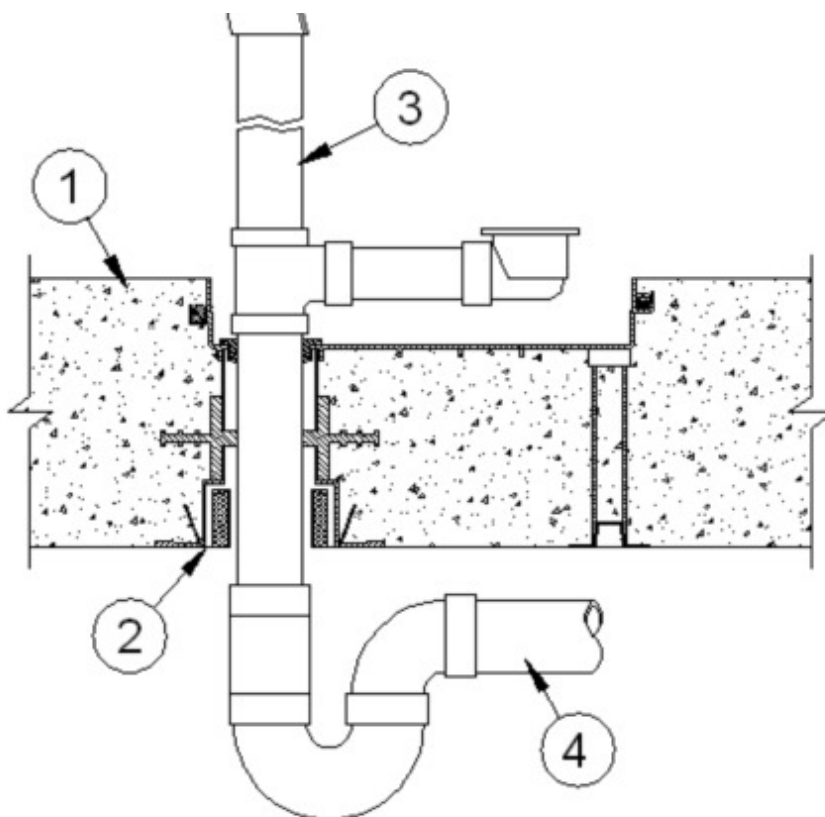
F Rating — 3 Hr

T Rating — 2 Hr

L Rating At Ambient - Less Than 1 CFM/sq ft

L Rating At 400°F - Less Than 1 CFM/sq ft

W Rating — Class 1



System tested with a pressure differential of 2.5 Pa between the exposed and the unexposed surfaces with the higher pressure on the exposed side.

1. **Floor Assembly** — Min 7 in. (178 mm) thick reinforced lightweight or normal weight (100-150 pcf or 1600-2400 kg/m³) concrete.

2. **Firestop Device*** — **Tub Box** — Nom 12-1/2 in. (318 mm) long by 2 in. (51 mm) deep nonmetallic tub box with adjustable legs and intumescent coupling. Cast in place firestop device attached to form and permanently embedded during concrete placement or grouted in concrete assembly in accordance with accompanying installation instructions. Min concrete thickness of 4-1/2 in. (51 mm) shall be maintained below tub box. For HFP devices optional accessory (not shown) includes sleeve extension installed in accordance with installation instructions.

SECURUS INC, DBA HOLDRITE — (Configuration A) HydroFlame HFPTB-NP-0200, HFPTB-TW-0200, (Configuration B) HydroFlame TBS-TW-0150

3. **Waste/Overflow Fitting** — Nom 1-1/2 in. (38 mm) diam brass waste/overflow fitting with chromed brass drain tube inserted through base of tub box. **(Config A, HFPTB devices)**, Drain tube of waste/overflow fitting secured in top of tub box base using drain seal bushing supplied with firestop device. **(Config B, TBS-TW-0150 device)**, Drain tube of waste/overflow fitting secured in top or bottom of tub box base using drain seal bushing supplied with firestop device.

4. **Drain Piping** — Nom 1-1/2 in. (38 mm) or 2 in. (51 mm) diam cast iron or copper drain piping with the appropriate fittings/bushings for connection to the waste/overflow fitting. Drain piping rigidly supported away from tub box with suitable hangers.

*** Indicates such products shall bear the UL or cUL Certification Mark for jurisdictions employing the UL or cUL Certification (such as Canada), respectively.**

Last Updated on 2016-09-12

Questions?

Print this page

Terms of Use

Page Top

© 2016 UL LLC

The appearance of a company's name or product in this database does not in itself assure that products so identified have been manufactured under UL's Follow-Up Service. Only those products bearing the UL Mark should be considered to be Certified and covered under UL's Follow-Up Service. Always look for the Mark on the product.

System No. F-A-2183 XHEZ.F-A-2183 Through-penetration Firestop Systems

[Page Bottom](#)

Design/System/Construction/Assembly Usage Disclaimer

- Authorities Having Jurisdiction should be consulted in all cases as to the particular requirements covering the installation and use of UL Certified products, equipment, system, devices, and materials.
- Authorities Having Jurisdiction should be consulted before construction.
- Fire resistance assemblies and products are developed by the design submitter and have been investigated by UL for compliance with applicable requirements. The published information cannot always address every construction nuance encountered in the field.
- When field issues arise, it is recommended the first contact for assistance be the technical service staff provided by the product manufacturer noted for the design. Users of fire resistance assemblies are advised to consult the general Guide Information for each product category and each group of assemblies. The Guide Information includes specifics concerning alternate materials and alternate methods of construction.
- Only products which bear UL's Mark are considered Certified.

XHEZ - Through-penetration Firestop Systems

XHEZ7 - Through-penetration Firestop Systems Certified for Canada

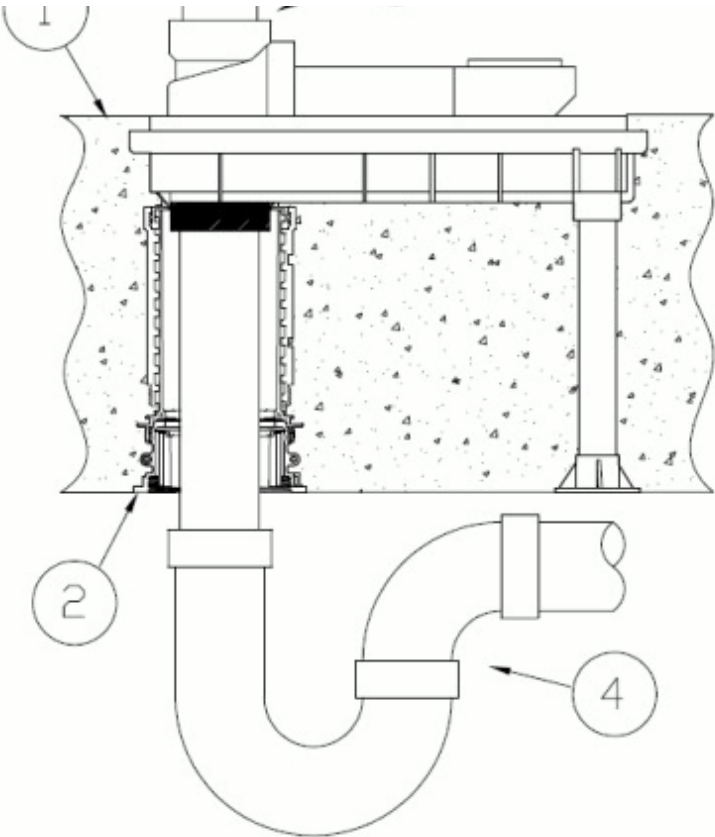
[See General Information for Through-penetration Firestop Systems](#)

[See General Information for Through-penetration Firestop Systems Certified for Canada](#)

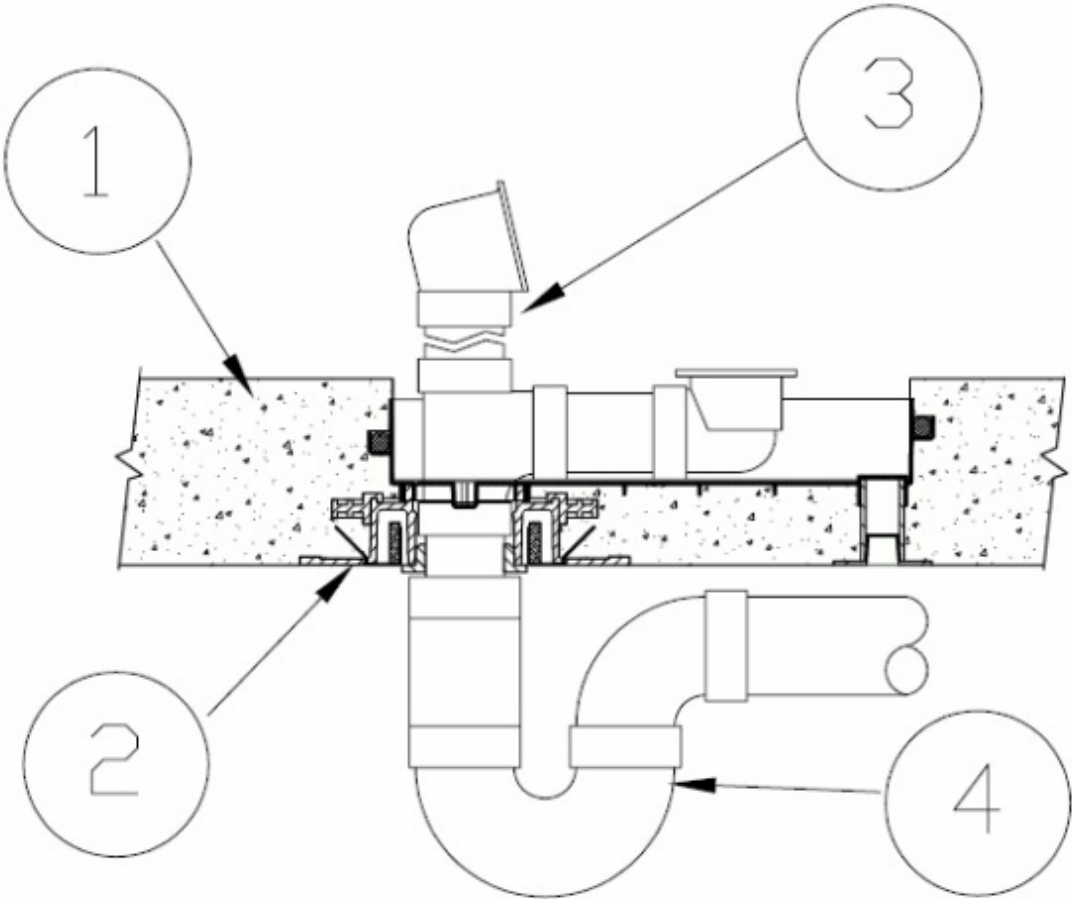
System No. F-A-2183

September 12, 2016

| ANSI/UL1479 (ASTM E814) | CAN/ULC S115 |
|---|--|
| F Ratings — 2 or 3 Hr (See Item 2) | F Ratings — 2 or 3 Hr (See Item 2) |
| T Rating — 3/4 Hr | FT Ratings — 3/4 & 2 Hr (See Item 2) |
| L Rating At Ambient — Less Than 1 CFM/sq ft | FH Ratings — 2 or 3 Hr (See Item 2) |
| L Rating At 400 F — Less Than 1 CFM/sq ft | FTH Ratings — 3/4 & 2 Hr (See Item 2) |
| W Rating — Class 1 (See Item 2) | L Rating At Ambient — Less Than 5.1 L/s/m ² |
| | L Rating At 400 F — Less Than 5.1 L/s/m ² |



Configuration A



Configuration B

kg/m³) concrete.

2. **Firestop Device* — Tub Box** — Nom 12-1/2 in. (318 mm) long by 2 in. (51 mm) deep nonmetallic tub box with adjustable legs and intumescent coupling. Cast in place firestop device attached to form and permanently embedded during concrete placement or grouted in concrete assembly in accordance with accompanying installation instructions. For Config A HFP devices optional accessory (not shown) includes sleeve extension installed in accordance with installation instructions. Min concrete thickness of 2 in. (51 mm) shall be maintained below tub box.

SECURUS INC, DBA HOLDRITE — HydroFlame (Config A) HFPTB-NP-0200 HFPTB-TW-0200 or (Config B) TB-NP0200, TB-TW-0200

Note: System is limited to 2 hours when TB-NP-0200, TB-TW-0200 is used. T Rating is 2 hr when HPF devices are used. W-Rating is applicable when (Config A) HFP devices are installed is used or (Config B) when the Midbody seal is installed on the TB devices.

3. **Waste/Overflow Fitting** — Nom 1-1/2 in. (38 mm) diam Schedule 40 polyvinyl chloride (PVC) waste/overflow fitting and drain pipe cemented together and inserted through base of tub box. Conf A, Drain pipe of waste/overflow fitting secured in top (optional) of tub box base using drain seal bushing supplied with firestop device or waste/overflow fitting inserted through tub box and base. Conf B, Drain pipe of waste/overflow fitting secured in top or bottom of tub box base using drain seal bushing supplied with firestop device.
- 3A. **Alternate Waste/Overflow Fitting** — (Not Shown) — Nom 1-1/2 in. (38 mm) diam thin-wall PVC waste/overflow fitting and drain tube inserted in and secured to top of tub box base using drain seal bushing supplied with firestop device.
4. **Drain Piping** — Nom 1-1/2 in. (38 mm) or 2 in. (51 mm) diam Schedule 40 PVC, Schedule 40 ABS, cast iron or copper drain piping with the appropriate fittings/bushings for connection to the waste/overflow fitting. When alternate thin-wall PVC waste/overflow fitting (Item 3A) is used in Conf B, nom 2 in. (51 mm) diam PVC pipe cemented into bottom of tub box base for connection to P-trap. Drain piping rigidly supported away from tub box with suitable hangers.

*** Indicates such products shall bear the UL or cUL Certification Mark for jurisdictions employing the UL or cUL Certification (such as Canada), respectively.**

Last Updated on 2016-09-12

Questions?

Print this page

Terms of Use

Page Top

© 2016 UL LLC

The appearance of a company's name or product in this database does not in itself assure that products so identified have been manufactured under UL's Follow-Up Service. Only those products bearing the UL Mark should be considered to be Certified and covered under UL's Follow-Up Service. Always look for the Mark on the product.

UL permits the reproduction of the material contained in the Online Certification Directory subject to the following conditions: 1. The Guide Information, Assemblies, Constructions, Designs, Systems, and/or Certifications (files) must be presented in their entirety and in a non-misleading manner, without any manipulation of the data (or drawings). 2. The statement "Reprinted from the Online Certifications Directory with permission from UL" must appear adjacent to the extracted material. In addition, the reprinted material must include a copyright notice in the following format: "© 2016 UL LLC".



System No. F-A-1103 XHEZ.F-A-1103 Through-penetration Firestop Systems

[Page Bottom](#)

Design/System/Construction/Assembly Usage Disclaimer

- Authorities Having Jurisdiction should be consulted in all cases as to the particular requirements covering the installation and use of UL Certified products, equipment, system, devices, and materials.
- Authorities Having Jurisdiction should be consulted before construction.
- Fire resistance assemblies and products are developed by the design submitter and have been investigated by UL for compliance with applicable requirements. The published information cannot always address every construction nuance encountered in the field.
- When field issues arise, it is recommended the first contact for assistance be the technical service staff provided by the product manufacturer noted for the design. Users of fire resistance assemblies are advised to consult the general Guide Information for each product category and each group of assemblies. The Guide Information includes specifics concerning alternate materials and alternate methods of construction.
- Only products which bear UL's Mark are considered Certified.

XHEZ - Through-penetration Firestop Systems

XHEZ7 - Through-penetration Firestop Systems Certified for Canada

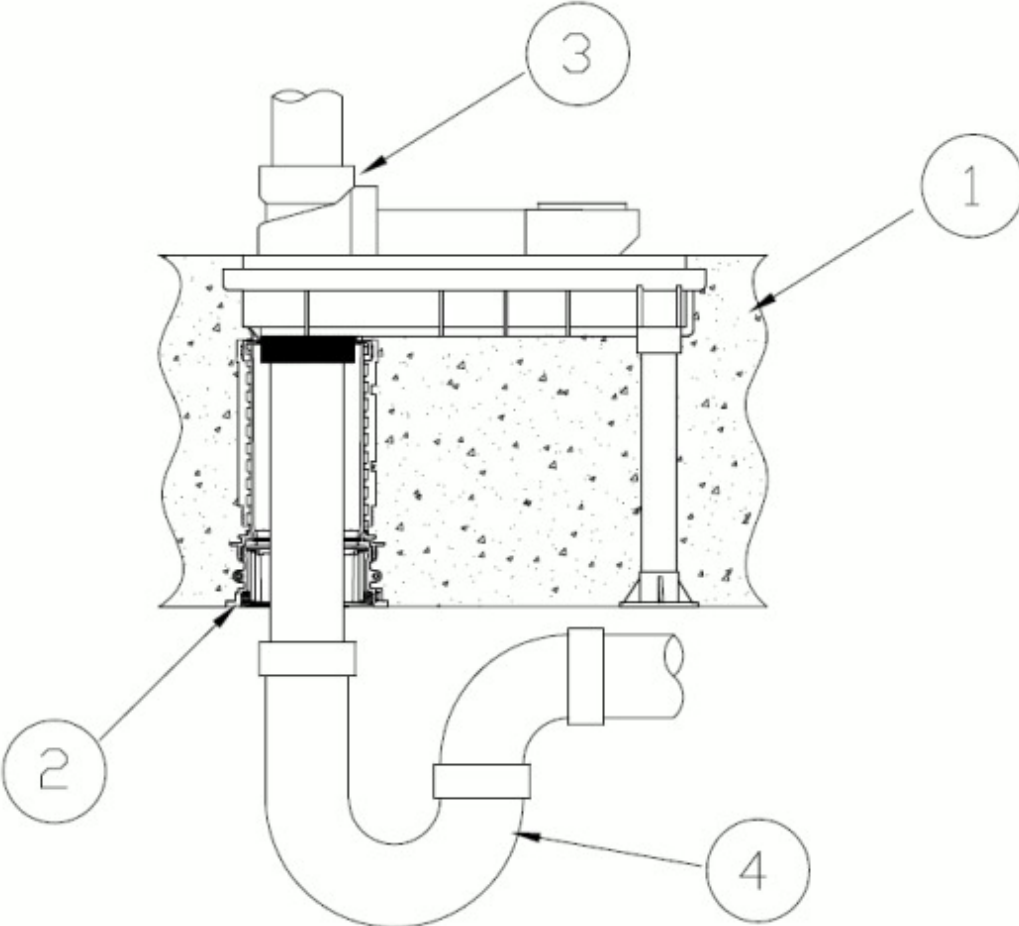
[See General Information for Through-penetration Firestop Systems](#)

[See General Information for Through-penetration Firestop Systems Certified for Canada](#)

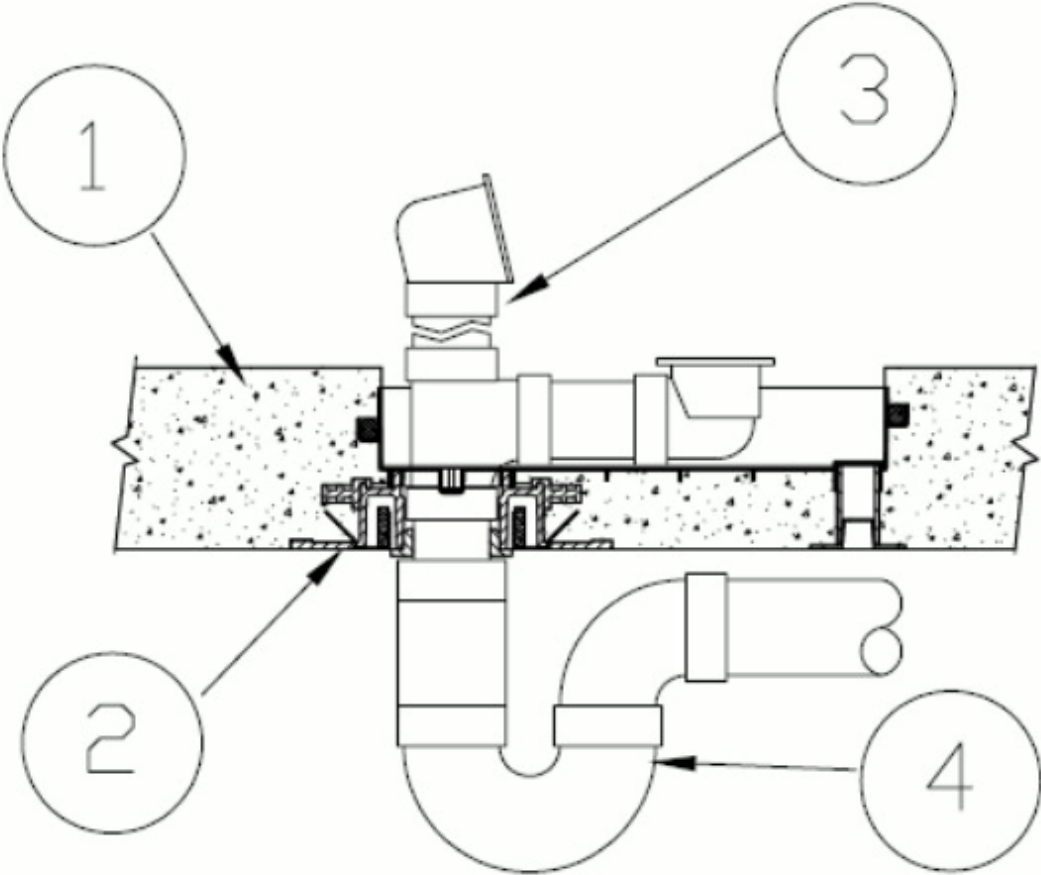
System No. F-A-1103

September 12, 2016

| ANSI/UL1479 (ASTM E814) | CAN/ULC S115 |
|---|--|
| F Ratings — 2 or 3 Hr (See Item 2) | F Ratings — 2 or 3 Hr (See Item 2) |
| T Rating — 3/4 Hr | FT Rating — 3/4 Hr |
| L Rating At Ambient — Less Than 1 CFM/sq ft | FH Ratings — 2 or 3 Hr (See Item 2) |
| L Rating At 400 F — Less Than 1 CFM/sq ft | FTH Rating — 3/4 Hr |
| W Rating — Class 1 (See Item 2) | L Rating At Ambient — Less Than 5.1 L/s/m ² |
| | L Rating At 400 F — Less Than 5.1 L/s/m ² |



Configuration A



Configuration B

System tested with a pressure differential of 2.5 Pa between the exposed and the unexposed surfaces with the higher pressure on the exposed side.

1. **Floor Assembly** — Min 4-1/2 in. (114 mm) thick reinforced lightweight or normal weight (100-150 pcf or 1600-2400 kg/m³) concrete.

2. **Firestop Device* — Tub Box** — Nom 12-1/2 in. (318 mm) long by 2 in. (51 mm) deep nonmetallic tub box with adjustable legs and intumescent coupling. Cast in place firestop device attached to form and permanently embedded during concrete placement or grouted in concrete assembly in accordance with accompanying installation instructions. Min concrete thickness of 2 in. (51 mm) shall be maintained below tub box. Config A HFP devices optional accessory (not shown) includes sleeve extension installed in accordance with installation instructions. For Config B TB devices optional accessory (not shown) includes Midbody seal installed in accordance with installation instructions.

SECURUS INC, DBA HOLDRITE — (Config A) HydroFlame HFPTB-NP-0200, HFPTB-TW-0200 or (Config B) HydroFlame TB-NP-0200, TB-TW-0200

Note: System is limited to 2 hours when TB devices are used. W-Rating is applicable when (Config A) HFP devices are installed is used or (Config B) when the Midbody seal is installed on the TB device.

3. **Waste/Overflow Fitting** — Nom 1-1/2 in. (38 mm) diam brass waste/overflow fitting with chromed brass drain tube inserted through base of tub box. For HFP series device (Config A), Drain tube of waste/overflow fitting secured in top of tub box base using drain seal bushing supplied with firestop device. For TB series devices (Config B), Drain tube of waste/overflow fitting secured in top or bottom of tub box base using drain seal bushing supplied with firestop device.

4. **Drain Piping** — Nom 1-1/2 in. (38 mm) or 2 in. (51 mm) diam cast iron or copper drain piping with the appropriate fittings/bushings for connection to the waste/overflow fitting. Drain piping rigidly supported away from tub box with suitable hangers.

*** Indicates such products shall bear the UL or cUL Certification Mark for jurisdictions employing the UL or cUL Certification (such as Canada), respectively.**

Last Updated on 2016-09-12

[Questions?](#)

[Print this page](#)

[Terms of Use](#)

[Page Top](#)

© 2016 UL LLC

The appearance of a company's name or product in this database does not in itself assure that products so identified have been manufactured under UL's Follow-Up Service. Only those products bearing the UL Mark should be considered to be Certified and covered under UL's Follow-Up Service. Always look for the Mark on the product.

UL permits the reproduction of the material contained in the Online Certification Directory subject to the following conditions: 1. The Guide Information, Assemblies, Constructions, Designs, Systems, and/or Certifications (files) must be presented in their entirety and in a non-misleading manner, without any manipulation of the data (or drawings). 2. The statement "Reprinted from the Online Certifications Directory with permission from UL" must appear adjacent to the extracted material. In addition, the reprinted material must include a copyright notice in the following format: "© 2016 UL LLC".