

A172.8-UG-VR Series BASE MODEL A172408S-UG-VR

BARRIER FREE, VANDAL RESISTANCE
BUTTON, UNIVERSAL BI-LEVEL,
WALL MOUNTED WATER COOLER

STANDARD FEATURES

- Rough-Ins Match Other Manufacturer's for Easy Replacement
- EZ Door® Filter, 30-Second Filter Replacement Option
- Child Or Adult Ada Compliant (When Properly Installed)
- Universal Bi-Level - Can Be Installed Left Unit High, Right Unit Low Or Opposite With No Additional Parts Required.
- Apron and One-Piece Bottom Wrapper is Satin Finish Or Gray Powder Coat Finish
- 304 Stainless Steel Basin and Flush Mounted Chrome Plated Brass Button
- Polished Stainless Steel, Anti-Rotation, Non-Squirt Bubblers
- 100-Mesh Inlet Strainer
- Individual Hanging Brackets Provided
- Auto-stop allows Cartridge and Strainer Service Without Shutting Off Water Supply Stop
- Lead-Free
- Water Leak Detection Auto Shut-Off Valve

SUGGESTED SPECIFICATIONS

Model A172408S-UG-VR is a Bi-Level, self-contained, pressure Water Cooler that shall deliver a minimum of **8.0 GPH** (30.3 LPH) of water at 50°F (10°C) cooled from 80°F (26.7°C) inlet water and 90° (32.2°C) ambient. Units shall be activated by Vandal Resistant Chrome Plated Brass Front Pushbuttons by using less than 5 pounds of force. Bubblers shall be Lead-Free Stainless Steel with an integrally designed non-squirt feature and operate on a water pressure range of 20-105 PSIG. Tops shall be constructed from 304 Stainless Steel and have an Integral Drain. Cabinet shall be Stainless Steel with Satin Finish or Galvanized/Galvannealed Steel with Gray Powder Coat Finish. Cooling system shall use R-134a Refrigerant and be Capillary Tube controlled. Unit shall be listed by Underwriters Laboratories for both the US and Canada and is to be compliant to ANSI/ASHRAE 18. Unit shall be certified to Public Law 111-380 (NO-LEAD) and NSF/ANSI/CAN 61. Fixture meets ADA, ADA Standing Person, and ADA Child requirements when mounted appropriately. Unit shall be listed by Underwriters Laboratories for both the US and Canada, compliant to the Air Conditioning and Refrigeration Institute Standard 1010. Unit shall still deliver ambient water temperature to the Bubbler in the absence of electrical power as long as there is a pressurized water supply. Provide Factory installed Water Leak Detection Auto Shut-Off Valve.

Model Number	GPH*	Rated Watts	Full Load Amps	Approx. Shipping Weight
A172408S-UG-VR	8.0	335	4.1	140 lbs.

* GPH of 50°F water at 90°F ambient room temperature and 80°F inlet water temperature. Compressor motor operates on 115 Volt / 60 Hz single phase.

Complies with the following standards:



NSF/ANSI/CAN 61

ANSI/ASHRAE 18



Model A172108S-UG-VR
PATENT# 10,100,933



Maintenance Advantage®
Water Cooler by Murdock Manufacturing

MODEL: "RATED FOR INDOOR AND OUTDOOR USE"
(Must Specify)

FLEXIBLE BUBBLER

- ☐ A172108F-UG-VR Gray Finish
- ☐ A172408F-UG-VR Satin Stainless Finish

STAINLESS STEEL BUBBLER

- ☐ A172108S-UG-VR Gray Finish
- ☐ A172408S-UG-VR Satin Stainless Finish (Standard, Shown)

OPTIONS:

(Additional costs may apply.)

- ☐ -LOGO Customer Specified Logo / Graphics
- ☐ -220V 220 Volt / 50 Hz or 60Hz Compressor

ACCESSORIES:

(Additional costs may apply. Accessory items are packaged separately.)

- ☐ -WF3EZ 3000-Gallon EZ Door® PFAS Filter¹
NSF/PFAS/Lead Bacteria/Chlorine/Microplastics
- ☐ -SK5 Cane Detection Skirt for Upper Unit¹
Skirt finish provided to match Model selected above
(P.N. A000G000-SK5 Gray, A0004000-SK5 Satin Stainless)

NOTES:

¹ - Refer to Supplemental Submittal Sheet for Details.

Compatible Mounting Support Carrier

Jay R. Smith Mfg. Co. Figure # 0834-4P <https://www.JRSmith.com>

NSF/ANSI/CAN 61: Q ≤ 1

NSF/ANSI/CAN 61 Compliant including lower lead leaching criteria.

NOTE: Units installed with exposure to extreme hot or cold temperatures require adequate protection. Units are not freeze resistant. Refer to Installation Instructions for complete details.

3000 Gallon PFAS Filter Certifications

Product Warranty

WARNING: Cancer and Reproductive Harm - www.P65Warnings.ca.gov

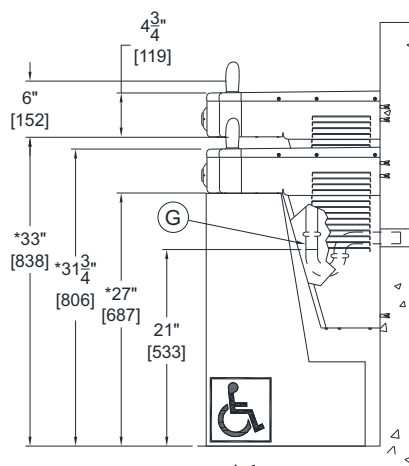
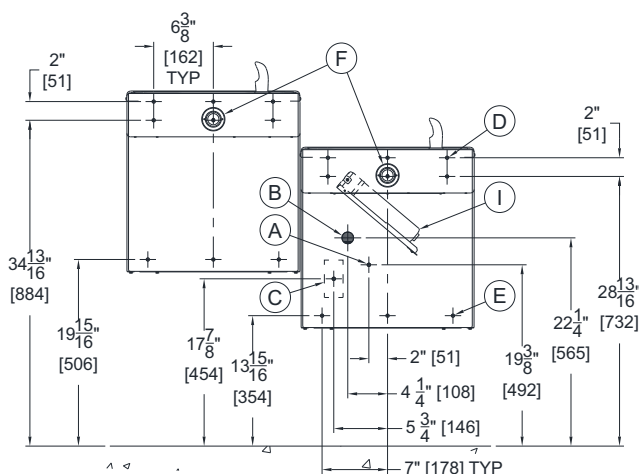
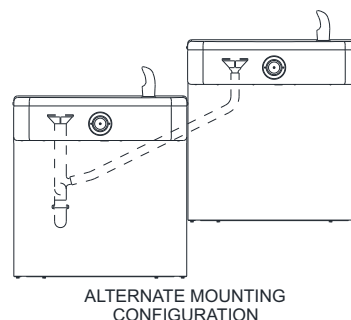
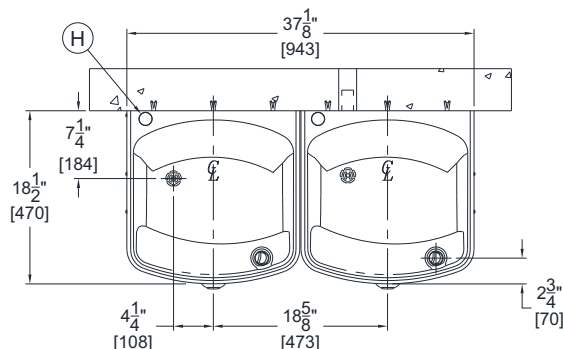
A172.8-UG-VR Series

BASE MODEL A172408S-UG-VR

BARRIER FREE. VANDAL RESISTANCE

BUTTON, UNIVERSAL BI-LEVEL.

WALL MOUNTED WATER COOLER



GENERAL NOTES:

1. ALL DIMENSIONS ARE IN INCHES [MM]
2. ALLOW 4 INCHES [102MM] MINIMUM CLEARANCE PER SIDE FOR VENTILATION
- *3. DIMENSIONS SHOWN ARE FOR ADA ADULT HEIGHT. ADJUST VERTICAL DIMENSIONS AS NECESSARY TO COMPLY WITH FEDERAL, STATE & LOCAL CODES
4. STOP VALVE, P-TRAP & ELECTRICAL OUTLET NOT SUPPLIED
5. IMPORTANT: COOLERS MUST BE ATTACHED TO WALL WITH APPROPRIATE ANCHOR SCREWS

- A. 3/8" O.D. SUPPLY INLET
- B. WASTE OUTLET FOR P-TRAP BY OTHERS FOR PROVIDED 1-1/4" O.D. TAILPIECE
- C. ELECTRICAL SERVICE ROUGH
- D. Ø3/8" HANGER BRACKET PUNCHING, 6 PLACES FOR ANCHORING HARDWARE BY OTHERS
- E. Ø1/4" PUNCHING, 3 PLACES FOR ANCHORING HARDWARE BY OTHERS
- F. PUSHBUTTON CARTRIDGE
- G. 1-1/4" [32] O.D. TAILPIECE FOR P-TRAP BY OTHERS
- H. REMOVABLE PLUG FOR BOTTLE FILLER (-BF11 OR -BF12 ONLY)
- I. OPTIONAL -WF1EZ/WF3EZ DOOR® PFAS FILTER

IMPORTANT: Dimensions are shown for reference only. Refer to product Installation Manual for complete details prior to Rough-in.

SELECTION SUMMARY & APPROVAL FOR MANUFACTURING	Model Number & Options _____ Quantity _____		<i>All dimensions are subject to manufactures tolerance of plus or minus 1/4" nominal and subject to change without notice. Murdock assumes no responsibility for use of void or superseded data. Dimensions may change with the addition of optional accessories. Murdock® Mfg. Member of Morris Group International®. Please visit www.murdockmfg.com for most current specifications.</i>
	Company _____		
	Contact _____	Title _____	
	Signature (Approval for Manufacturing)	Date	

All dimensions are subject to manufactures tolerance of plus or minus 1/4" nominal and subject to change without notice. Murdock® assumes no responsibility for use of void or superseded data. Dimensions may change with the addition of optional accessories. Murdock® Mfg., Member of Morris Group International®. Please visit www.murdockmfg.com for most current specifications.