

Eastman™

Expansion Tank Tee

3/4 in. Expansion Tank Tee is engineered for ease of installation and flexible system design. Its design reduces leak points and enables the tank to swivel, accommodating vertical and horizontal orientation (support required), enhancing the installation process in various setups.

Applications

Ideal for both domestic and commercial water systems, ensuring a stable connection point for expansion tanks.

Specification Data

Performance

Operating Temperature Range

Tank Sizes: 2-10 gallon

Mounting Options: Vertical and horizontal mounting (Must be supported)

Maximum Pressure: 200 PSI

Materials

Body: Lead-Free¹ DZR Brass

Union Tail Piece: Lead-Free¹ DZR Brass

Coupling Nut: Brass

Threaded Nipple: Lead-Free¹ DZR Brass

Gasket: EPDM

¹For all models, surfaces that are in contact with consumable water contain less than 0.25% lead by weight.

Certifications

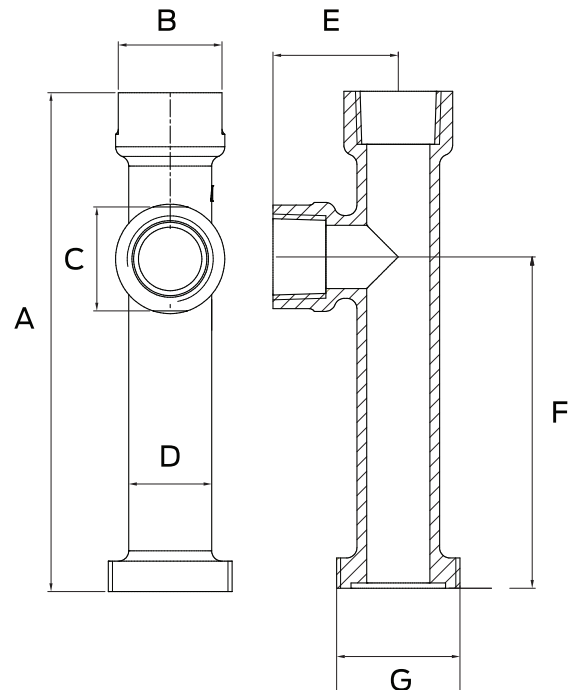
NSF/ANSI/CAN 61, NSF/ANSI/CAN 372

For listing information, please contact Customer Service

AN RWC BRAND

RWC

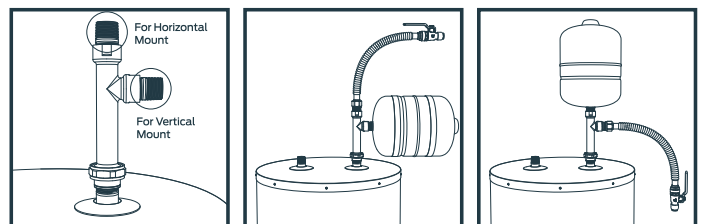
US 1-800-486-5256 | eastmanplumbing.com



Dimensions (inches)

Part #	A	B	C	D	E	F	G
26090Z	6"	1-1/4"	1-1/4"	1" Dia	1-1/2"	4"	1-1/2" Dia

Mounting Options



Product Submittal

Name	
Date	
Architect/Owner	
Contractor	
Tag	
Notes	