

CLEANOUT PLUG

» 878 & 879 SERIES

SPECIFICATION

Sioux Chief 878 & 879 Series Cleanout Plug shall be used where necessary in drainage systems. Plug shall be made from glass-fiber reinforced polypropylene material for durability and chemical resistance. Plugs shall have open slots in the top surface to facilitate installation and removal. Designed in accordance with ASTM F1498-08.

MATERIALS

Plug: Glass-fiber reinforced polypropylene.

Thread Insert: Brass (optional)

INSTALLATION

For use in PVC/ABS or cast iron DWV systems. Use compatible thread sealing compound or PTEF tape. Install into female threads. Do not overtighten.

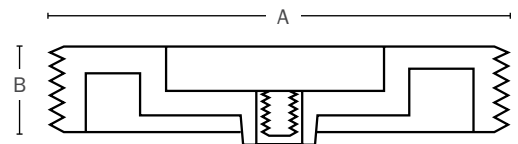
DIMENSIONS

A: Nominal size	1½"	2"	3"	4"	5"	6"
B: Plug thickness	11/16"	11/16"	7/8"	7/8"	1"	1"

ITEM # SUBMITTED	_____
JOB NAME	_____
LOCATION	_____
ENGINEER	_____
CONTRACTOR	_____
PO#	_____ TAG _____



878-030



Create Item Number

87A-BC

e.g. 878-30: 3" White polypro cleanout plug with brass thread insert

PLUG COLOR A

8 = White Polypro
9 = Black Polypro

BRASS INSERT B

0 = No brass insert
_ = With brass insert

SIZE C

15 = 1½" MIP Thread
20 = 2" MIP Thread
30 = 3" MIP Thread
40 = 4" MIP Thread
50 = 5" MIP Thread*
60 = 6" MIP Thread*

*Only available with brass insert