

Metal bend supports

Submittal information

Date submitted:

Project Information

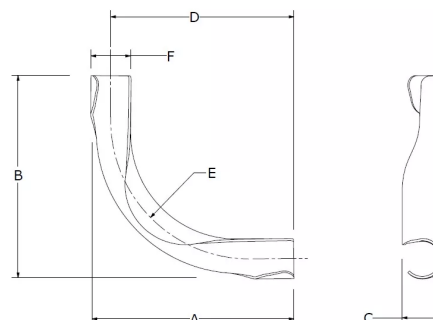
Job name :	Location :
Engineer :	Date submitted:
Contractor :	Submitted by:
Manufacturer's representative :	Approved by :

Technical Data

Material Metal

Product information and application use

Snap the tubing into the Metal Bend Support at the beginning of the bend. Continue the bend through the support and snap the tubing into the support at the end of the bend. Refer to the Uponor AquaPEX® Professional Plumbing Installation Guide or the Uponor Radiant Floor Heating Installation Handbook for additional information.



Part name	Part no.	A [inch]	B [inch]	C [inch]	D [inch]	E [inch]	F [inch]	Weight per UOM [lbs/UOM]
3/8" Metal Bend Support	A5110375	3.176	3.176	0.63	2.857	1.811	0.64	0.04
1/2" Metal Bend Support	A5110500	3.583	3.583	0.807	3.169	2.352	0.827	0.1
5/8" Metal Bend Support	A5110625	4.98	4.98	0.984	4.488	3.079	1.033	0.16
3/4" Metal Bend Support	A5110750	6.43	6.43	1.181	5.827	5.276	1.177	0.32

Installation

Snap the pipe into the metal bend support at the beginning of the bend. Continue the bend through the support, and snap the pipe into the support at the end of the bend. Refer to the Uponor Piping Systems Installation Guide or the Uponor Radiant Floor Heating Installation Handbook for additional information.

Related applications

PEX-a Plumbing Systems
Radiant Heating and Cooling Systems
AquaSAFE™ Fire Safety Systems
Hydronic Piping Systems

Codes

Standards

Listings

-

Trademark Information

ProPEX® is a registered trademark of Uponor Inc. ProPEX™ is a trademark of Uponor Ltd.

Contact information

Uponor Inc.
5925 148th Street West
Apple Valley, MN 55124
T 800.321.4739
F 952.891.2008

Uponor Ltd.
6510 Kennedy Road
Mississauga, ON L5T 2X4
T 888.594.7726
F 800.636.9517