



RESIDENTIAL PRODUCT CATALOG



SOLID. STATE.

When it comes to building durability into a product, nobody does it like State. In fact, we've tested our water heaters in some of the most hostile environments and under the toughest conditions to make sure they last longer and provide many more years of hot water.

StateWaterHeaters.com

Want To Grow Your Business? **CONSULT THE XPERT.™**



GROW YOUR BUSINESS with the help of an Xpert. The Xpert Product Selection Tool allows you to recommend a water heater that will meet the needs of a customer, while giving you the opportunity to sell products that will provide additional hot water and/or perform at higher efficiencies.

CREATE HAPPY CUSTOMERS. The Xpert Product Selection Tool adds to your expertise by quickly selecting the best water heater based on your customer's lifestyle. The Xpert allows you to immediately show a customer the facts about a water heater and why it's the perfect fit, based on your recommendation.



To consult the Xpert, visit
www.statewaterheaters.com/Xpert
or download the State App.

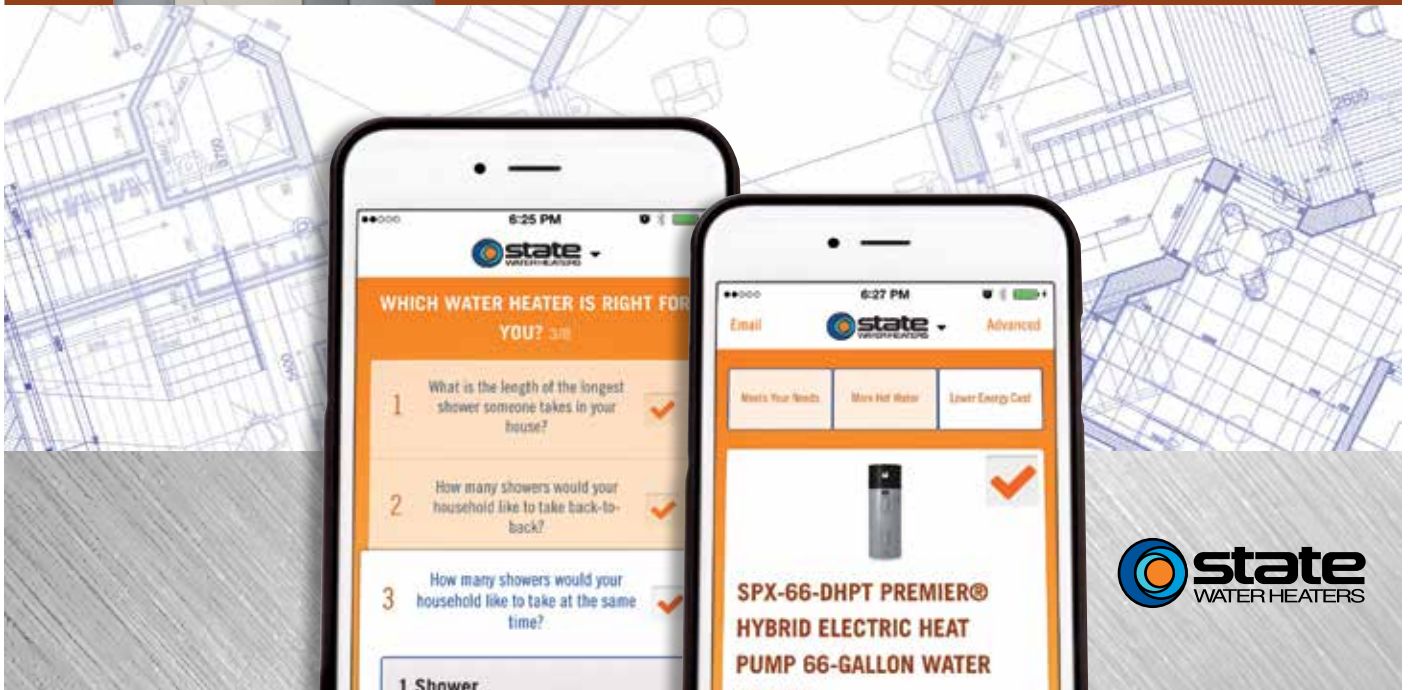




Table of Contents

About State Water Heaters	2
State Complete Product Offering	3
Introducing the ProLine® Family	4
Residential Water Heater Selection Guide	5
ProLine® Family Features	6
Features and Benefits	7
Contractor Rewards	8
RESIDENTIAL GAS	
Premier® High Efficiency Power Vent	9
Premier® High Efficiency Power Direct Vent	10
Polaris™ High Efficiency	11
ProLine® XE Power Vent	12
ProLine® XE Non-Condensing Power Direct Vent	13
ProLine® XE High Efficiency	14
ProLine® XE High Efficiency Non-Condensing Flue Damper	15
ProLine® XE High Efficiency Non-Condensing Ultra-Low NOx Flue Damper	16
ProLine® XE Ultra-Low NOx Power Vent	17
ProLine® Master Atmospheric Vent	18
ProLine® Master Ultra-Low NOx	19
ProLine® High Recovery Atmospheric Vent 75 & 100 Gallon	20
ProLine® Direct Vent	21
ProLine® Atmospheric Vent	22
ProLine® Mobile Home Atmospheric Vent	23
ProLine® Mobile Home Direct Vent	24
ProLine® Ultra-Low NOx	25
ProLine® Ultra-Low NOx Direct Vent	26
ProLine® Ultra-Low NOx High Recovery	27
RESIDENTIAL HYBRID ELECTRIC	
ProLine® XE Hybrid Electric Heat Pump-10-Year Warranty	28
ProLine® XE Hybrid Electric Heat Pump-6-Year Warranty	29
RESIDENTIAL ELECTRIC	
ProLine® XE Electronic Display	30
ProLine® Master	31
ProLine® Standard	32
Mobile Home	33
ProLine® Specialty	34
RESIDENTIAL TANKLESS	
ProLine® XE Condensing with Recirculation Pump	35
ProLine® XE Condensing High Efficiency	36
ProLine® XE Condensing High Efficiency	37
ProLine® XE Non-Condensing Concentric Vent	38
ProLine® XE Non-Condensing	39
ProLine® XE Non-Condensing Ultra-Low NOx	40
RESIDENTIAL PUMP AND EXPANSION TANKS	
Pump Mate™-SPMD Series	41
Pump Mate™-SSB Series	42
Heavy-Duty State ProLine® Glasslined & Galvanized	43
Waterguard™ & Therm-o-Flex™	44
Therm-o-Flex™	45

About State Water Heaters

State Water Heaters, a brand of State Industries, LLC., is a leading manufacturer of commercial and residential water heaters. State offers a wide selection of water heater products, and has consistently developed new technologies to ensure longer product life. Based in Ashland City, Tennessee, State has seven water heater manufacturing plants and hundreds of distribution centers across the United States to ensure efficient service to State's national customer base of residential homeowners, wholesalers, contractors, and other members of the engineering community. All State products are backed by solid customer technical support and a durable tank and parts warranty.

History

In 1946, State Water Heaters was founded by Herbert Lindahl, Sr. as a small entrepreneurial company producing coal and wood-burning stoves in a garage in Nashville, Tennessee. In the years that followed, State expanded and became a leader in the water heating industry through steadfast commitments to seeking new materials, new technology and innovative engineering techniques. Landmark moments in State's proud history include:

- 1948** — State produces its first electric water heater.
- 1954** — State expands product lines and manufactures first gas-fired water heaters.
- 1956** — State manufactures its first welded-steel galvanized tanks.
- 1957** — State produces its first porcelain glass-lined tanks; the basic design feature is still in use today.
- 1979** — State is granted US patents for their Sandblaster® commercial water heater design.
- 1996** — State is the world's largest water heater manufacturer with over 2900 employees and average daily production of over 10,000 units. The company introduces a complete new product line that includes the high efficiency models.



State Complete Product Offering

With more than 500 water heater products, State offers customized solutions for all residential and commercial hot water and storage needs. The main categories below outline State's product offerings; for more detailed information, visit statewaterheaters.com.

ProLine® Master Gas and Electric – water heaters offer high-end components, including dual stainless steel elements and increased anode protection, along with extended eight-year warranty coverage in both electric and gas models

ProLine® XE – Premier Power Vent and other high efficiency gas models promise superior performance and up to 96% thermal efficiency

ProLine® XE Premier Heat Pump – water heaters offer four highly efficient operating modes that can help homeowners save on energy bills, cutting operating costs by more than half

Tankless – water heaters are available in indoor and outdoor models to provide space savings and endless hot water

Pump Tanks – State offers five pump tank models, designed to properly collect, store, and dose wastewater.

Expansion Tanks – Waterguard™ and Thermo-Flex™ products eliminate damage to water heater connections and provide added system protection.



Visit StateWaterHeaters.com for complete information.

CODES AND STANDARDS



CSA® - Low Lead Content. This mark shown on a plumbing product signifies certification to California's legislative AB 1953 and Vermont's legislative Act 193 that limits the lead content in plumbing fixtures that come in contact with drinking water to a maximum of 0.25% lead.



Patented eco-friendly burner design reduces NOx emissions by up to 33% and complies with Low NOx emission requirements of less than 40 ng/l.



All State residential water heaters are UL listed according to safety specifications outlined in Underwriters Laboratories, Inc. Standards for Safety (UL 174).



ProLine®

COMMERCIAL GRADE

Introducing the ProLine® Family of Commercial-Grade Residential Water Heaters



ProLine® XE
Premier®

ProLine® Master

ProLine®

When it comes to building a tough commercial-grade water heater, the keys to success are outstanding components and superior manufacturing capabilities. We've combined these two important elements to create the ProLine® family of commercial-grade residential water heaters. This wholesale-channel exclusive will give State Water Heaters' contractors the ultimate advantage.

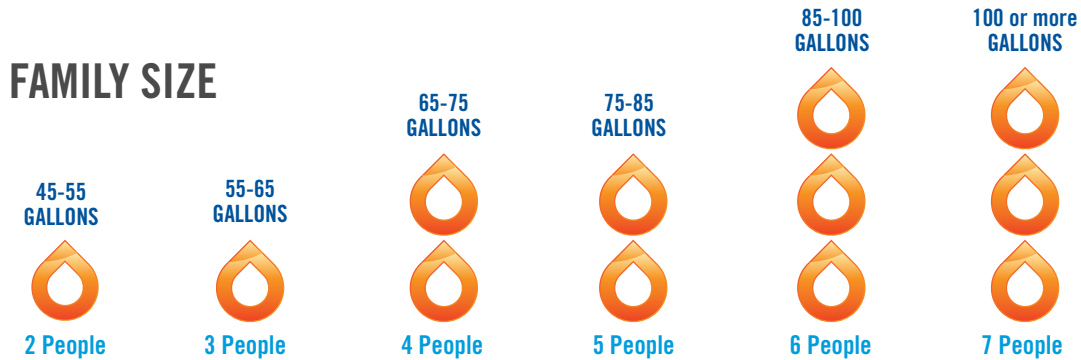
RESIDENTIAL WATER HEATER SELECTION GUIDE

RESIDENTIAL TANK-TYPE WATER HEATER MODELS

Determine whether your family is low demand or high demand. You should consider your family to be high demand if...

- More than 2 full baths in home
- Teenagers living in home
- Over-sized whirlpool bath or large tub

Locate your family size and determine the first hour rating requirement for your family. If you decide your family is high demand, consider moving up to the next first hour rating level.



Consult the heater options on the following pages for a State residential water heater with a first hour rating that meets your requirements.

TANKLESS WATER HEATER MODELS

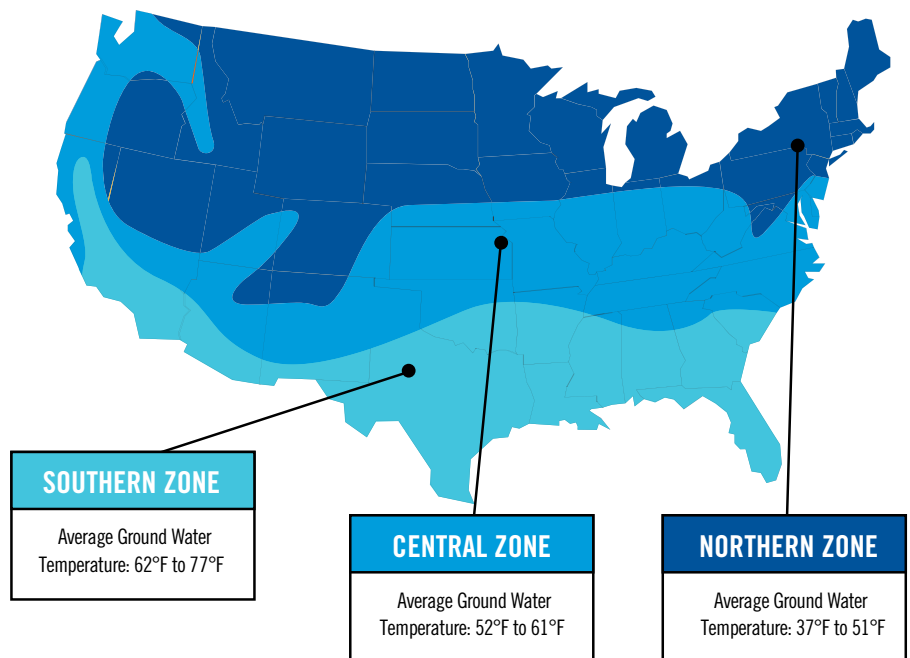
Ground Water Temperature Factor

The temperature of incoming ground water (cold water inlet temperature) varies greatly throughout the U. S. and also fluctuates with the changing of the seasons. The temperature of the water as it enters the water heater will determine the amount of “temperature rise” required to achieve the desired hot water outlet temperature (120°F is recommended).

The best way to measure your incoming ground water temperature is to use a thermometer to measure cold water temperature during the coldest season of the year. To simplify the process, use this map to determine whether your installation location is in the Southern Zone, Central Zone, or Northern Zone.

Peak Hot Water Demand

The next step is to determine how much hot water will be required during the busiest usage period (“peak demand”). Consider all appliances and fixtures that use hot water, including lavatory faucets, kitchen faucets, washing machines, dishwashers, showers and bathtubs. Be sure to determine how many appliances and fixtures will be used at the same time (“peak demand”).



STATE WATER HEATERS

PREMIUM FEATURES. COMMERCIAL GRADE WATER HEATERS.



PROLINE®
GOOD

PROLINE® MASTER
BETTER

PROLINE® XE
BEST

OPERATING COST

\$\$\$

\$\$

\$

INSTALLATION SPACE REQUIRED

■ to ■■

■■

■ to ■■■

WARRANTY (YEARS)

6

8

6-15

PREMIUM FEATURES:

Blue Diamond® Glass Coating**

●

●

●

Self-Cleaning Automatic
Sediment-Cleaning System**

●

●

●

Self-Powered Electronic Gas Valve*

●

●

●

Heat Trap Nipples**

●

●

●

Enhanced Flow Brass Drain Valve**

●

●

●

CoreGard™ Advanced
Anode Rod Protection**

●

● ●

● ●

Energy Saving

Meets Requirements

Meets Requirements

●

Double Long Life Elements***

●

●

Electronic User Interface

Condensing Combustion*

●

Continuous Flow*

●

Cutting Edge Technology

●

Industry Leading Efficiency

●

* These features apply to gas products only

** These features apply to tank-type products only

*** These features apply to electric products only

Hot Water Output, Cost of Operation, & Installation Space Required estimated based on typical applications/installations.
For a more custom analysis of unique installations, visit statewaterheaters.com and use our product selector tool.



COMMERCIAL-GRADE COMPONENTS



BLUE DIAMOND® GLASS COATING

A patented commercial-grade formula that provides superior tank protection and corrosion resistance compared to the industry standard glass lining. Blue Diamond glass coating blend is formulated in the same lab that creates the protection for our industry-leading commercial product line. Through our long history, we've learned that one size rarely fits all. That's why we customize our signature formula to best meet the needs of every water heater we produce, ensuring long life no matter which State model you choose.



COREGARD™ ANODE ROD

Feature a stainless steel center core that allows the anode to be secured in place, extending the life of the tank. Stainless steel core technology is the same that is used in our industry-leading commercial product line. ProLine® Master products have increased anode protection with either longer or multiple anodes, depending on model.



ENHANCED-FLOW BRASS DRAIN VALVE

Our residential water heaters have a solid brass, tamper resistant, enhanced flow, ball type, drain valve.

Designed for easy operation, it uses a standard female hose fitting that allows for fast and easy draining during maintenance. The valve also includes an integral screwdriver slot featuring a 1/4 turn (open/close) radius, which not only permits full straight through water flow but also a quick and positive shut off.



SELF-POWERED ELECTRONIC GAS VALVE

State gas water heaters are equipped with a self-powered electronic gas valve with intelligent control logic. The gas valve has an internal microprocessor that provides enhanced operating parameters and tighter differentials for precise sensing and faster heating response to optimize performance. The self-powered electronic gas valve uses a thermopile to generate the power needed to operate the electronic gas control without requiring an external power source. It also incorporates an LED Status Indicator that monitors system operation and service diagnostics.



SELF-CLEANING DIP TUBES

PEX cross-linked polymer dip tubes are long-lasting with superior resistance to destructive thermal deterioration and can withstand temperature excursions up to 400 degrees. PEX is the same material used in dip tubes found in our industry-leading commercial product line.



COMMERCIAL-GRADE ELECTRIC ELEMENTS

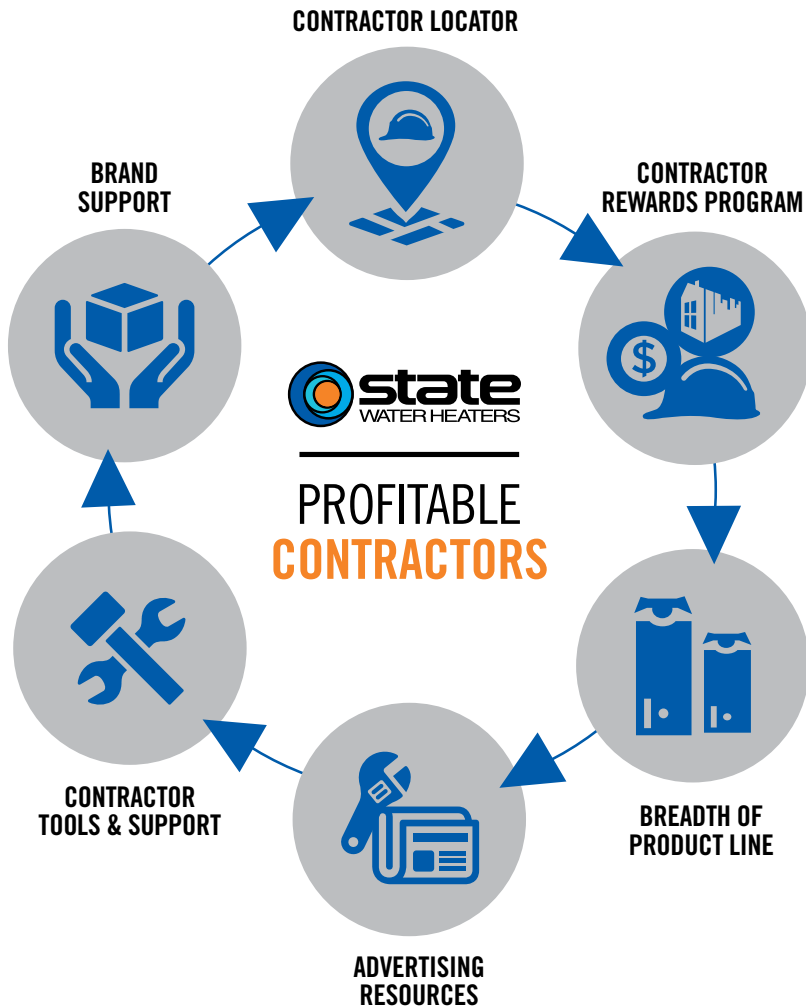
ProLine® Master electric products are outfitted with longer-lasting stainless steel upper and lower elements that are modeled after those used in our industry-leading commercial line.



HEAT TRAP NIPPLES

Helps mitigate standby heat loss. Factory-installed for faster installation.

WHY PROFESSIONALS CHOOSE STATE



To learn more visit:
www.statewaterheaters.com/contractorlocator

EARN POINTS BY PURCHASING STATE WATER HEATERS.

IT'S FREE AND EASY TO PARTICIPATE.
Enroll online at contractorrewards.com.

Eligible products will have a yellow reward code label worth valuable points. Two ways to enter the codes:

1. Download the Contractor Rewards mobile app and scan the code.
2. Enter the code at contractorrewards.com.

Redeem your points on thousands of reward items.

With over 1,000,000 merchandise items, your reward choices are endless.

STATE PROVIDES 6 KEY THINGS TO HELP GROW YOUR BUSINESS AND BECOME MORE PROFITABLE.

1. CONTRACTOR LOCATOR

An online locator that drives thousands of consumers from our websites right to our loyal contractors.

2. CONTRACTOR ADVERTISING TOOLS

Our Advertising Resource Center allows contractors to develop an easy, affordable and custom advertising campaign to promote their business. statewaterheater.com/ads

3. BREADTH OF PRODUCT LINE

Residential or commercial, we have the most complete line from standard models to the most innovative high efficiency water heaters available.

4. PRODUCT SALES TOOLS

We provide contractors access to the sales tools needed to close more sales.

5. CONTRACTOR REWARDS™ PROGRAM

Our program rewards our loyal contractors for buying our products. Buy more and get rewarded with prizes and higher status on our contractor locator.

6. BRAND SUPPORT

Marketing investment in our brand drives consumers to recognize our name, visit our website, locate local contractors and request our products.

*To be listed on the Contractor Locator you must meet the minimum threshold of codes entered at: ContractorRewards.com

To learn more about these 6 key things please visit www.statewaterheaters.com/contractor



**CONTRACTOR
REWARDS.COM**

Your Business. Your Choices. Your Rewards.

PREMIER® HIGH EFFICIENCY POWER VENT

PROLINE® XE
BEST

POWER VENT DESIGN FOR INSTALLATION VERSATILITY

- Helical internal heat exchanger achieves 90% thermal efficiency, which saves money on operating costs compared to a standard 80% efficient gas water heater.
- Combined horizontal and vertical vent runs terminating through outside wall, using Schedule 40 PVC pipe as follows:
 - 2" pipe allows vent runs up to 25 equivalent feet.
 - 3" pipe allows vent runs up to 65 equivalent feet.
 - 4" pipe allows vent runs up to 128 equivalent feet.

SIDE-MOUNTED TAPS FOR RECIRCULATING SYSTEMS

- Hot and cold "side taps" allow Premier Power Vent to be used for combination space/water heating applications.

INTELLI-VENT™* GAS CONTROL WITH SILICON NITRIDE HOT SURFACE IGNITOR

- Premium-grade hot surface ignitor eliminates standing pilot.
- Electronic circuitry provides superior system diagnostic capabilities plus extremely precise temperature control.

BLUE DIAMOND® GLASS COATING WITH TWO HEAVY DUTY ANODE RODS

- Provides superior corrosion resistance compared to the industry-standard glass lining.

GREEN CHOICE® GAS BURNER

- Patented eco-friendly burner design reduces NOx emissions by up to 33% and complies with Low-NOx emission requirements of less than 40 ng/J.

SELF-CLEANING DIP TUBE

CSA CERTIFIED AND ASME RATED T&P RELIEF VALVE

MAXIMUM HYDROSTATIC WORKING PRESSURE: 150 PSI

CODE COMPLIANCE

- Meets UBC, CEC and ICC National Codes.
- Meets the thermal efficiency and standby loss requirements of the U.S. Department of Energy and Current edition of ASHRAE/IES 90.1.

6-YEAR LIMITED TANK AND PARTS WARRANTY

- For complete information, consult written warranty or go to statewaterheaters.com.

*Intelli-Vent™ is a registered trademark of Emerson Electric Company

PROLINE® XE
BEST



Model Number	Gallon Capacity	Recovery @ 90F Rise (Gallon/Hour)	BTU Input Gallon Per Hour	First Hour Rating (Gallons)	Dimensions in Inches			Approx. Shipping Weight
					Height to Top of Draft Hood	Height to Top of Heater	Diameter	
GP6 50 YTVIT	50	92	76,000	127	71	68-5/8	22	210

Available in natural gas only.
Standard model certified for sea level to 5,300 ft. elevation. Specify high altitude when ordering for use in elevations up to 10,100 ft.
Optional Condensate Neutralizer Kit available (part number 100112380).

PREMIER® HIGH EFFICIENCY POWER DIRECT VENT

PROLINE® XE
BEST



GP6 75 YTPDT



HELICAL INTERNAL HEAT EXCHANGER

- Spiral heat exchanger keeps hot combustion gases in the tank longer to lengthen the heat transfer cycle.

POWER DIRECT VENT DESIGN

- Combined vertical and horizontal runs terminating through an outside wall. Vents using PVC, CPVC or ABS pipe.
 - 2" pipe, vents up to 45 equivalent feet.
 - 3" pipe, vents up to 128 equivalent feet.

CONDENSING DESIGN

- 96% efficient condensing design.
- Equipped with condensate drain tee.

SIDE-MOUNTED HOT AND COLD RECIRCULATING TAPS

- Allows the Premier® High Efficiency Power Direct Vent to be installed as part of combination space heating/water heating applications.

ADVANCED ELECTRONIC CONTROL

- Large LCD Display.
- Precise temperature control.
- Advanced diagnostics.
- iCOMM™ compatible and can be monitored from remote locations. Call 1.888.WATER02 for more information.

CODE COMPLIANCE

- Complies with SCAQMD Rule 1146.2 and other air quality management districts with similar requirements for Ultra-Low NOx emissions requirements of 14 ng/l or 20ppm.
- Meets UBC, CEC and ICC National Codes.
- Meets the thermal efficiency and standby loss requirements of the U.S. Department of Energy and current edition of ASHRAE/IES 90.1.

6-YEAR LIMITED TANK AND PARTS WARRANTY

- For complete information, consult written warranty or go to statewaterheaters.com.

Model Number	Gallon Capacity	Recovery @ 90°F Rise Gallon Per Hour	BTU Input Per Hour	Dimensions in Inches				Approx. Shipping Weight (lbs)
				Vent Size	Height to Top of Heater	Height to T&P	Diameter	
GP6 50 YTPDT	50	129	100,000	2 or 3	66-3/4	49-1/4	22	255
GP6 75 YTPDT	75	129	100,000	2 or 3	65-1/4	45-5/8	27-3/4	382

Available in natural gas only.
Water connection is 3/4" on all models.
All models are certified from sea level to 10,100 ft. elevation.
Requires 120 VAC power supply.

CONDENSING DESIGN

- Operates at up to 96% thermal efficiency which saves money on operating costs compared to a standard 80% efficient gas water heater.
- Helical internal heat exchanger keeps hot combustion gases in the tank longer to extract more heat into the water.

STAINLESS STEEL CONSTRUCTION

- Tank and helical heat exchanger are constructed from 444 stainless steel for excellent corrosion resistance without the need for an anode.

QUIET OPERATION

- Quiet blower and burner minimize noise.

POWER DIRECT VENT DESIGN

- Direct vent using PVC, CPVC or ABS either thru-the-wall or thru-the-roof.

OPTIONAL CONCENTRIC VENT KIT

ADVANCED ELECTRONIC CONTROL

- Large LCD display provides precise temperature control and advanced diagnostics.

CODE COMPLIANCE

- Complies with SCAQMD Rule 1146.2 and other air quality management districts with similar requirements for Ultra-Low NOx emissions requirements of 14 ng/J or 20 PPM.
- Meets UBC, CEC, and ICC National Codes.
- Meets the thermal efficiency and standby loss requirements of the U. S. Department of Energy and current edition of ASHRAE/IES 90.1.

10-YEAR LIMITED TANK AND 1-YEAR LIMITED PARTS WARRANTY

- For complete information, consult written warranty or go to statewaterheaters.com.



(GHX 34 100 N)



Model Number	Gallon Capacity	Recovery @ 90° Rise Gallon Per Hour	BTU/h Input Gallon Per Hour	Thermal Efficiency	Vent Size	Dimensions in Inches			Approx. Shipping Weight (lbs)
						Height to Top of Heater	Height to T&P	Diameter	
GHX 34 100 N	34	129	100,000	96%	2 or 3	48-1/2	41	22	150
GHX 34 130 N	34	165	130,000	96%	2 or 3	48-1/2	41	22	150
GHX 34 150 N	34	190	150,000	94%	2 or 3	48-1/2	41	22	150
GHX 50 130 N	50	165	130,000	95%	2 or 3	62-3/8	55	22	176
GHX 50 150 N	50	190	150,000	95%	2 or 3	63-3/4	56-1/4	22	180
GHX 50 175 N	50	222	175,000	96%	3	63-3/4	56-1/4	22	180
GHX 50 199 N	50	253	199,000	96%	3	63-3/4	56-1/4	22	180

Available in Propane (LP) gas. Specify when ordering Propane (LP) gas.
Models certified for sea level to 7,700 ft. elevation.

PROLINE® XE POWER VENT

PROLINE® XE
BEST



VERSATILE POWER VENT DESIGN

- All models feature an exclusive 3-position rotatable blower outlet which adds flexibility.
- Combined horizontal and vertical vent runs up to 180 equivalent feet with 4" diameter venting (ABS, PVC, CPVC and polypropylene).
- All models are equipped with a protected sensor that detects the presence of flammable vapors and automatically disables the burner to prevent ignition.
- Air intake snorkel elevates the inlet location of combustion air to prevent flammable vapors from entering the sealed combustion chamber.

HOT-SURFACE IGNITOR

- More robust and reliable than standing pilot, and reduces energy consumption.

BUILT-IN HEAT TRAPS ON THE WATER INLET AND OUTLET REDUCE THE AMOUNT OF HEAT LOST THROUGH PIPING

2-INCH-THICK, ENVIRONMENTALLY FRIENDLY FOAM INSULATION REDUCES THE AMOUNT OF HEAT LOSS AND CONTRIBUTES TO OVERALL ENERGY EFFICIENCY

USER-FRIENDLY

- State-of-the-art electronic gas control provides more precise temperature control.
- LED control light displays operation status and diagnostics information.

ENHANCED-FLOW BRASS DRAIN VALVE

AVAILABLE IN NATURAL GAS AND PROPANE

CODE COMPLIANCE:

- Meets UBC, CEC and HUD National Codes.
- Meets the thermal efficiency and standby loss requirements of the U.S. Department of Energy and current edition of ASHRAE/IES 90.1.
- Complies with the Federal Energy Conservation Standards effective April 16, 2015, in accordance with the Energy Policy and Conservation Act (EPCA) as amended.

6-YEAR LIMITED TANK AND PARTS WARRANTY

- For complete information, consult written warranty or go to statewaterheaters.com



Model Number	Series	Gallon Capacity	Energy Factor	Recovery @ 90°F Rise Gallon Per Hour	BTU Input Gallon Per Hour	First Hour Rating Gallon	Dimensions in Inches			Approx. Shipping Weight (lb)
							Height to Top of Blower	Height to Top of Tank	Diameter	
GS6 40 YBVIS	200	40	0.70	44.7	40,000	72	59	49-5/8	22	174
GS6 40 YRVIT	200	40	0.70	55.9	50,000	93	3	59-1/4	20	176
GS6 50 YBVIS	200	50	0.70	44.7	40,000	93	60-1/8	50-3/4	24	198
GS6 50 YRVIT	200	50	0.70	55.9	50,000	96	68-1/8	58-3/4	22	192
GS6 50 YRVHSL	200	50	0.70	69.3	62,000	108	61-1/8	52	24	212
†GS6 75 YRVHTL	210	75	N/A	80.4	76,000	N/A	70-5/8	61-1/4	26	277

All models have 3/4" NPT water connections.
Side connections standard on YRVHSL and YRVHTL models.
Side connections available on YRVIT models. Add "L" to the model number (example GS6 40 YRVITL).
All models rated for installation at altitudes up to 10,100 ft.

Natural gas models cited are 200/210. Propane models are series 201/211. When ordering propane gas, change "Y" to "H" in the model number (example GS6 40 HBVIS).
† GS6 75 YRVHTL is not ENERGY STAR® Qualified.



PROLINE® XE NON-CONDENSING POWER DIRECT VENT



POWER DIRECT VENT DESIGN

- Combined horizontal and vertical vent runs up to 180 equivalent feet with 4" diameter venting (ABS, PVC, CPVC and polypropylene).
- Two-pipe sealed combustion system uses outside air, eliminating problems caused by insufficient indoor ventilation.

GREEN CHOICE® GAS BURNER

- Patented eco-friendly gas burner design reduces NOx and complies with Low-NOx emission requirements of less than 40 ng/J.

HOT-SURFACE IGNITOR

- More robust and reliable than standing pilot, and reduces energy consumption.

SELF-CLEANING DIP TUBE

USER-FRIENDLY

- State-of-the-art electronic gas control provides more precise temperature control.
- LED control light displays operation status and diagnostics information.

ENHANCED-FLOW BRASS DRAIN VALVE

CSA CERTIFIED AND ASME RATED T&P RELIEF VALVE

CODE COMPLIANCE:

- Meets UBC, CEC and HUD National Codes.
- Meets the thermal efficiency and standby loss requirements of the U.S. Department of Energy and current edition of ASHRAE/IES 90.1.
- Complies with the Federal Energy Conservation Standards effective April 16, 2015, in accordance with the Energy Policy and Conservation Act (EPCA) as amended.

DESIGN-LISTED BY CSA INTERNATIONAL

- Certified at 300 psi test pressure and 150 psi working pressure.
- Listed according to ANSI Z21. Z21.10.1-CSA 4.1 standards governing storage tank-type water heaters.

6-YEAR LIMITED TANK AND PARTS WARRANTY

- For complete information, consult written warranty or go to statewaterheaters.com.



Model Number	Series	Gallon Capacity	NG Input Per Hour Propane	Energy Factor	First Hour Rating Gallon	Recovery @ 90°F Rise Gallon Per Hour	Dimensions in Inches			Approx. Shipping Weight (lb)
							Height to Top of Blower	Height to Top of Tank	Diameter	
GS6 40 YBPDS	200	40	40,000	0.71	71	45.2	58-1/4	49-5/8	22	174
GS6 50 YBPDT	200	50	45,000	0.70	93	50.3	67-1/2	58-3/4	22	192
GS6 50 YRPDTL 5	200	50	62,000**	0.71	115	72.6	69	60-1/4	22	200
†GS6 75 YRPDTL	210	75	76,000	N/A	N/A	82.4	70-5/8	61-1/2	26	277

When ordering propane (LP), change "Y" to "H" in the model number (example GS6 40 YBPDSL).
 For side connect models, add "L" to the model number (example: GPDX 50L).
 Side connections available on YBPDS and YBPDT models.
 Natural gas models cited are series 200/210. Propane models are series 201/211.

Side connections are standard on YRPDTL models.
 All models rated for installation at altitudes up to 10,100 ft.
 † GS6 75 YRPDTL 5 is not ENERGY STAR® qualified.

PROLINE® XE HIGH EFFICIENCY

PROLINE® XE
BEST



PRESSURIZED COMBUSTION SYSTEM

INSTALLATION FRIENDLY

- Allows for easy replacement of standard atmospheric vent heater.
- Easily connects to existing B-vent.

FAN-ASSISTED, CATEGORY 1 APPLIANCE

- Plugs into standard 110/120V outlet (10 foot power cord included).

24V ELECTRONIC CONTROLS

ELECTRONIC IGNITION

LCD USER INTERFACE

- Easy-to-read eye level display.
- Simple temperature settings and adjustments.
- Service diagnostics are in plain text.

POWERED ANODE ROD

- Automatically adjusts protection to match water conditions.

ENHANCED-FLOW BRASS DRAIN VALVE

SELF-CLEANING DIP TUBE

GREEN CHOICE® GAS BURNER

- Patented eco-friendly gas burner design reduces NOx emissions by up to 33% and complies with Low-NOx emission requirements of less than 40 ng/J.

CODE COMPLIANCE

- Meets UBC, CEC and HUD National Codes.
- Meets the thermal efficiency and standby loss requirements of the U. S. Department of Energy and current edition of ASHRAE/IES 90.1.
- Complies with the Federal Energy Conservation Standards effective April 16, 2015, in accordance with the Energy Policy and Conservation Act (EPCA), as amended.

DESIGN-CERTIFIED BY CSA INTERNATIONAL

- Certified at 300 psi test pressure and 150 psi working pressure. Listed according to ANSI Z21.10.1- CSA 4.1 standards governing storage tank-type gas water heaters.

6-YEAR LIMITED TANK AND PARTS WARRANTY

- For complete information, consult written warranty or go to statewaterheaters.com.

Model Number	Gallon Capacity	First Hour Rating Gallons	Energy Factor (EF)	BTU Input Gallon Per Hour	Recovery @ 90°F Rise Gallon Per Hour	Dimensions in Inches					Approx. Shipping Weight (lbs)
						Foam Thickness	Height to Top of Draft Hood	Height to Top of Tank	Diameter	Draft Hood	
GP6 40 YPCT	40	70	0.70	40,000	43	2	61-3/4	58	20	3 or 4	157
GP6 50 YPCT	50	81	0.70	40,000	43	2	60-5/8	57-1/8	22	3 or 4	171

Available in natural gas only.
Water connection is 3/4" on all models.
All models are certified from sea level to 10,100 ft. elevation.
Requires 120 VAC power supply.

PROLINE® XE HIGH EFFICIENCY NON-CONDENSING FLUE DAMPER

PROLINE® XE
BEST

AUTOMATIC FLUE DAMPER

- Increases efficiency as it automatically opens and closes to reduce heat loss in the standby mode.

ELECTRONIC GAS CONTROL

DIAGNOSTICS

ELECTRONIC IGNITION

SELF-CLEANING DIP TUBE

GREEN CHOICE® GAS BURNER

- Patented eco-friendly burner design reduces NOx emissions by up to 33% and complies with Low-NOx emission requirements of less than 40 ng/J.

COREGARD™ ANODE ROD

ENHANCED-FLOW BRASS DRAIN VALVE

BLUE DIAMOND® GLASS COATING

CSA CERTIFIED AND ASME RATED T&P RELIEF VALVE

CODE COMPLIANCE

- Meets UBC, CEC and HUD National Codes.
- Meets the thermal efficiency and standby loss requirements of the U.S. Department of Energy and current edition of ASHRAE/IES 90.1.
- Complies with the Federal Energy Conservation Standards effective April 16, 2015, in accordance with the Energy Policy and Conservation Act, (EPCA), as amended.

DESIGN-CERTIFIED BY CSA INTERNATIONAL

- Certified at 300 psi test pressure and 150 psi working pressure.
- Listed according to ANSI Z21.10.1 - CSA 4.1 standards governing storage tank-type water heaters.

6-YEAR LIMITED TANK AND PARTS WARRANTY

- For complete information, consult written warranty or go to statewaterheaters.com.



Model Number	Gallon Capacity	First Hour Rating Gallons	Energy Factor (EF)	BTU Input Gallon Per Hour Natural*	Recovery @ 90°F Rise Gallon Per Hour	Dimensions in Inches					Approx. Shipping Weight (lbs)
						Foam Thickness	Height to Top of Draft Hood	Height to Top of Tank	Diameter	Draft Hood Outlet	
Tall Models											
GS6 40 YBFT	40	67	0.67	40,000	42	2	64-1/4	58-1/4	20	3 or 4	152
GS6 50 YBFT	50	81	0.67	40,000	42	2	63-1/2	57-1/4	22	3 or 4	167
Short Models											
GS6 40 YBFS	40	67	0.67	40,000	42	2	54	47-3/4	22	3 or 4	149
GS6 50 YBFS	50	88	0.67	40,000	42	2	55-3/4	49-1/2	24	3 or 4	175

Requires 120 VAC power supply.

Water connection is 3/4" on all models.

When ordering top-mounted T&P valve, add "G" to the model number (example: GS6 40 YBFT G).

All models are certified from sea level to 10,100 ft. elevation.

* GS6 50 YBFS available in natural gas only. All other models available in propane (LP) gas.

PROLINE® XE HIGH EFFICIENCY NON-CONDENSING ULTRA-LOW NOx FLUE DAMPER

PROLINE® XE
BEST



ENERGY STAR® EFFICIENCY

- Eco-friendly non-CFC foam insulation and an automatic flue damper increase efficiency to provide maximum household annual operating cost savings.

GREEN CHOICE® GAS BURNER

- Enhanced Ultra-Low NOx burner complies with SCAQMD Rule 1121 and other air quality management districts with similar requirements for NOx emissions of less than 10ng/J.

ELECTRONIC GAS CONTROL

SELF-CLEANING DIP TUBE

COREGARD™ ANODE ROD

BLUE DIAMOND® GLASS COATING

ENHANCED-FLOW BRASS DRAIN VALVE

REQUIRES 120V POWER 19.5' CORD INCLUDED

CODE COMPLIANCE

- Meets UBC, CEC and HUD (excluding mobile homes) National Codes.
- Meets the thermal efficiency and standby loss requirements of the U.S. Department of Energy and current edition of ASHRAE/IES 90.1.
- Complies with the Federal Energy Conservation Standards effective April 16, 2015, in accordance with the Energy Policy and Conservation Act, (EPCA), as amended.

CSA AND DESIGN-CERTIFIED BY CSA INTERNATIONAL

- Certified at 300 psi test pressure and 150 psi working pressure.
- Listed according to ANSI Z21.10.1 - CSA 4.1 standards governing storage tank-type water heaters.

6-YEAR LIMITED TANK AND PARTS WARRANTY

- For complete information, consult written warranty or go to statewaterheaters.com.



Model Number	Gallon Capacity	First Hour Rating (Gallons)	Energy Factor (EF)	BTU Input Natural Gas	Recovery @ 90F Rise (Gallon/Hour)	Dimensions in Inches					Approx. Shipping Weight
						Foam Thickness	Height to Top of Blower	Height to Top of Tank	Diameter	Draft Hood Outlet	
GS6-40-BFUT	40	74	0.67	40,000	42	2	64-1/4	58-1/4	20	3 or 4	152
GS6-50-BFUT	50	90	0.67	40,000	42	2	63-1/2	57-1/4	22	3 or 4	167

Requires 120VAC power supply located within 19ft of the heater.
Water connection is 3/4" on all models.
Standard top T&P, specify when ordering side T&P.
All models are certified from sea level to 7,800ft elevation.

PROLINE® XE ULTRA-LOW NOx POWER VENT



POWER VENTING MADE SIMPLE

- Thru-the-Wall or Thru-the-Roof power venting using either 2" or 3" PVC, ABS or CPVC vent pipe.

INTELLI-VENT™ GAS CONTROL

- Advanced electronics for more precise control of water temperature and easy to understand system diagnostics.

COMBINATION THERMOSTAT/ECO

- Utilizes an intermittent ignition gas valve (no standing pilot) with thermistor temperature sensor and built-in high temperature cut off.

QUIET AND EFFICIENT BLOWER

- Factory-installed 6-foot power cord with 3-prong male connector provided. Electrical requirements; 110/120 VAC power source, less than 5 amp draw.

SELF-CLEANING DIP TUBE

- Helps reduce lime and sediment buildup and maximizes hot water output . Made from long-lasting PEX cross-linked polymer.

COREGARD™ ANODE ROD

GREEN CHOICE® GAS BURNER

- Complies with SCAQMD Rule 1121 and other air quality management districts with similar requirements for NOx emissions of less than 10 ng/J.

ENHANCED-FLOW BRASS DRAIN VALVE

CODE COMPLIANCE

- Meets UBC, CEC and HUD National Codes.
- Meets the thermal efficiency and standby loss requirements of the U. S. Department of Energy and current edition of ASHRAE/IES 90.1.
- Complies with the Federal Energy Conservation Standards effective April 16, 2015, in accordance with the Energy Policy Conservation Act (EPCA), as amended.

6-YEAR LIMITED TANK AND PARTS WARRANTY

- For complete information, consult written warranty or go to statewaterheaters.com.



Model Number	Gallon Capacity	First Hour Rating Gallon Per Hour	Energy Factor	Recovery @ 90°F Rise Gallon Per Hour	BTU Input Gallon Per Hour	Dimensions in Inches			Draft Hood	Approx. Shipping Weight (lbs)
						Height to Top of Blower	Height to Top of Tank	Diameter		
GS6 40 UBKIT	40	69	0.68	42.6	42,000	20	66-7/8	58-5/8	2 or 3	170
GS6 50 UBKIT	50	81	0.68	42.6	42,000	22	66-8/8	57-7/16	2 or 3	207

No option available for Top T&P valve.

PROLINE® MASTER ATMOSPHERIC VENT

**PROLINE® MASTER
BETTER**



PROLINE® MASTER
BETTER

INTELLIGENT CONTROL LOGIC

- The internal microprocessor provides enhanced operating parameters and tighter differentials for precise sensing and faster heating response to optimize performance.
- Uses a thermopile to generate the power needed to operate the electronic gas control without requiring an external power source.
- The electronic gas control incorporates an LED status indicator that monitors system operation and service diagnostics.

*Not available on 60,000 BTU input models (GW8 50 RCT and GW8 55 RCT).

SELF CLEANING DIP TUBE

COREGARD™ ANODE ROD

- ProLine® Master products have increased anode protection with either longer, or multiple anodes depending on model.

PUSH-BUTTON PIEZO IGNITOR

ENHANCED-FLOW BRASS DRAIN VALVE

HEAT TRAP NIPPLES

BLUE DIAMOND® GLASS COATING

- Blue Diamond® Glass Coating blend is formulated in the same lab that creates the protection for our industry-leading commercial product line.

CODE COMPLIANCE

- Meets UBC, CEC and HUD National Codes.
- Meets the thermal efficiency and standby loss requirements of the U. S. Department of Energy and current edition of ASHRAE/IES 90.1.
- Complies with the Federal Energy Conservation Standards effective April 16, 2015, in accordance with the Energy Policy and Conservation Act, (EPCA), as amended.

DESIGN-CERTIFIED BY CSA INTERNATIONAL

- Certified at 300 psi test pressure and 150 psi working pressure.
- Listed according to ANSI Z21.10.1-CSA 4.1 standards governing storage tank-type water heaters.

8-YEAR LIMITED TANK AND PARTS WARRANTY

- For complete information, consult written warranty or go to statewaterheaters.com.

Model Number	Gallon Capacity	First Hour Rating Gallon	Energy Factor	BTU Input Natural Gas	BTU Input Propane Gas	Recovery 90°F Rise Gallon Per Hour	Dimensions in Inches				Approx. Shipping Weight (lbs)
							Height to Top of Draft Hood	Height to Top of Tank	Diameter	Draft Hood	
Tall Models											
GW8 40 BCT	40	70	0.62	40,000	36,000	42	61-3/4	58-1/4	20	3 or 4	138
GW8 50 BRT	50	88	0.60	40,000	37,000	41	60-3/4	57-1/4	21	3 or 4	148
GW8 50 BCT	50	88	0.62	40,000	37,000	43	60-3/4	57-1/4	22	3 or 4	165
GW8 50 RCT*	50	92	0.60	50,000	45,000	54	60-3/4	57-1/4	22	4	165
GW8 55 XCT*	55	106	0.59	60,000	54,000	65	59-3/4	55-1/4	24	4	185
Short Models											
GW8 40 BCS	40	68	0.62	40,000	36,000	41	51-1/2	48	22	3 or 4	135
GW8 50 BCS	50	93	0.60	40,000	40,000	43	53-1/4	49-3/4	24	3 or 4	177

Water connection - 3/4" on all models.

*Optional side-mounted recirculating taps, add "L" to the suffix in the model number (GS6 50 BRTL).

All models approved for installation from sea level to 10,100 ft. elevation.

THE ELECTRONIC GAS CONTROL INCORPORATES AN LED STATUS INDICATOR THAT MONITORS SYSTEM OPERATION AND SERVICE DIAGNOSTICS

HIGH ENERGY FACTORS

- Eco-friendly non-CFC foam insulation, heat traps and specially designed combustion chamber combine to produce a high Energy Factor for maximum savings on operating costs.

GREEN CHOICE® GAS BURNER

- Enhanced Ultra-low NOx burner complies with SCAQMD Rule 1121 and other air quality management districts with similar requirements for NOx emissions of less than 10 ng/J.

SELF-CLEANING DIP TUBE

COREGARD™ ANODE ROD

- ProLine® Master products have increased anode protection with either longer, or multiple anodes depending on model.

PUSH-BUTTON PIEZO IGNITOR

HEAT TRAP NIPPLES

BLUE DIAMOND® GLASS COATING

- Blue Diamond® Glass Coating blend is formulated in the same lab that creates the protection for our industry-leading commercial product line.

ENHANCED-FLOW BRASS DRAIN VALVE

CODE COMPLIANCE

- Meets UBC, CEC and HUD National Codes.
- Meets the thermal efficiency and standby loss requirements of the U.S. Department of Energy and current edition of ASHRAE/IES 90.1.
- Complies with the Federal Energy Conservation Standards effective April 16, 2015, in accordance with the Energy Policy Conservation Act (EPCA), as amended.

DESIGN-CERTIFIED BY CSA INTERNATIONAL

- Certified at 300 psi test pressure and 150 psi working pressure.
- Listed according to ANSI Z21.10.1-CSA 4.1 standards governing storage tank-type gas water heaters.

8-YEAR LIMITED TANK AND PARTS WARRANTY

- For complete information, consult written warranty or go to statewaterheaters.com

**PROLINE® MASTER
BETTER**



**PROLINE® MASTER
BETTER**



Model Number	Gallon Capacity	First Hour Rating Gallon	Energy Factor	BTU Input Natural Gas	Recovery @ 90°F Rise Gallon Per Hour	Dimensions in Inches				Approx. Shipping Weight (lbs)
						Height to Top of Draft Hood	Height to Top of Tank	Diameter	Draft Hood	
Tall Models										
GW8 40 BCUT	40	71	0.63	40,000	41	62	58-1/4	20	3 or 4	125
GW8 50 BCUT	50	91	0.62	40,000	42	60-3/4	57-1/4	22	3 or 4	148
GW8 50 RCUTL*	50	98	0.60	50,000	51	61	57-1/2	22	4	177
Short Models										
GW8 40 BCUS	40	69	0.62	40,000	41	51-1/2	47-3/4	22	3 or 4	138

All models may be ordered from the factory with top T&P valve as an option by adding "G" to the suffix of the model number (example GW8 40 BCUTG).

*Side loop connections are standard on model GW8 50 RCUTL.

*Most models approved for installation from sea level to 7,700 ft. elevation (except GW8 50 RCUTL, approved to 5,400 ft.).

PROLINE® HIGH RECOVERY ATMOSPHERIC VENT 75 & 100 GALLON



HIGHEST RECOVERIES

- Capacity/input combinations up to 98 gallons/75,100 BTUs produce recoveries up to 81 gallons per hour.

THE ELECTRONIC GAS CONTROL INCORPORATES AN LED STATUS INDICATOR THAT MONITORS SYSTEM OPERATION AND SERVICE DIAGNOSTICS

GREEN CHOICE® GAS BURNER

- Patented eco-friendly burner design reduces NOx emissions up to 33% and complies with Low-NOx emission requirements of 40 ng/J.

SELF-CLEANING DIP TUBE

COREGARD™ ANODE ROD

PUSH-BUTTON PIEZO IGNITOR

BLUE DIAMOND® GLASS COATING

ENHANCED-FLOW BRASS DRAIN VALVE

CODE COMPLIANCE

- Meets UBC, CEC and ICC National Codes.
- Meets the thermal efficiency and standby loss requirements of the U.S. Department of Energy and current edition of ASHRAE/IES 90.1.

DESIGN-CERTIFIED BY CSA INTERNATIONAL

- Certified at 300 psi test pressure and 150 psi working pressure.
- Listed according to ANSI Z21.10.1-CSA4.1 standards governing storage tank-type gas water heaters. CSA Certified and ASME Rated T&P Relief Valve.

MAXIMUM HYDROSTATIC WORKING PRESSURE 150 PSI

DESIGN-LISTED BY UNDERWRITERS LABORATORIES

- Certified at 300 psi test pressure and 150 psi working pressure.
- Listed according to ANSI Z21. 10.3 CSA 4.3 standards governing storage tank-type water heaters.

6-YEAR LIMITED TANK AND PARTS LIMITED WARRANTY

- For complete information, consult written warranty or go to statewaterheaters.com.

Model Number	Gallon Capacity	BTU Input Natural Gas	Recovery @ 90°F Rise Gallon Per Hour	Dimensions in Inches				Approx. Shipping Weight (lbs)
				Height to Top of Draft Hood	Height to Top of Tank	Diameter	Draft Hood	
GS6 75 XRRS	74	75,100	81	61	58-1/2	16	4	275
GS6 100 XRRT	98	75,100	81	68-1/2	66-1/2	16	4	350

Water connections are 1" male NPT on GS6 75 XRRS and 1-1/4" on GS6 100 XRRT.

For 10- year tank and 6-year parts limited warranty, change "6" to "X" in the model number (example: GSX 75 XRRS).

For optional side-mounted recirculating taps, add "L" to suffix (example: GS6 75 XRRS L).

When ordering propane (LP) gas change "X" to "C" in the model number (example: GS6 75 CRRS).

All models are certified from sea level to 7,700 ft. elevation.

DIRECT VENT DESIGN

- One-pipe, dual-channel closed system draws all make-up air from outside the home, eliminating problems caused by insufficient indoor ventilation and is FVIR compliant.
- Horizontal air intake and venting on all models up to 80 inches from outside wall with no electrical power needed.

INTELLIGENT CONTROL LOGIC

GREEN CHOICE® GAS BURNER

- Patented eco-friendly gas burner design reduces NOx emissions by up to 33% and complies with Low-NOx emission requirements of less than 40 ng/J.

SELF-CLEANING DIP TUBE

COREGARD™ ANODE ROD

PUSH BUTTON PIEZO IGNITOR

HEAT TRAP NIPPLES

CODE COMPLIANCE

- Meets UBC, CEC and HUD National Codes.
- Meets the thermal efficiency and standby loss requirements of the U.S. Department of Energy and current edition of ASHRAE/IES 90.1.
- Complies with the Federal Energy Conservation Standards effective April 16, 2015, in accordance with the Energy Policy and Conservation Act (EPCA), as amended.

DESIGN-CERTIFIED BY CSA INTERNATIONAL

- Certified at 300 psi test pressure and 150 psi working pressure. Listed according to ANZI Z21. 10.1-CSA 4.1 standards governing storage tank-type gas water heaters.

6-YEAR LIMITED TANK AND PARTS WARRANTY

- For complete information, consult written warranty or go to statewaterheaters.com.



Model Number	Gallon Capacity	First Hour Rating Gallon	Energy Factor	Input BTU Per Hour	Recovery 90°F Rise Gallon Per Hour	Dimensions in Inches				Approx. Shipping Weight (lbs)
						Height to Top of Draft Hood	Height to Top of Tank	Diameter	Vent Outlet	
GS6 40 YBDS	40	72	0.63	38,000	41	64	49-3/4	22	Co-Axial	178
GS6 50 YBDS	50	91	0.62	40,000	43	73	59	22	Co-Axial	200
GS6 50 YRDS	50	92	0.61	47,000	51	74	60	22	Co-Axial	215

Dual-channel system has 3" vent pipe inside 6" air intake pipe, for the 40 and 50-gallon models. All models have 2" foam cavity.

Water connection is 3/4" male on 8" center.

*Allow 29" for front to back dimension for gas control and air intake pipe at the rear of the heater.

No option available for top T&P.

All models are available in propane (LP) gas (series 301).

All models are certified from sea level to 7,700 ft. elevation.

All models available with side connections. Add "L" to the model number, example GS6 40 YBDS L.

PROLINE® ATMOSPHERIC VENT



INTELLIGENT CONTROL LOGIC

- The internal microprocessor provides enhanced operating parameters and tighter differentials for precise sensing and faster heating response to optimize performance.
- Uses a thermopile to generate the power needed to operate the electronic gas control without requiring an external power source.
- The electronic gas control incorporates an LED status indicator that monitors system operation and service diagnostics.

*Not available on 60,000 BTU input models (GCRX-50 and GCRX-55).

SELF CLEANING DIP TUBE

COREGARD™ ANODE ROD

PUSH-BUTTON PIEZO IGNITOR

ENHANCED-FLOW BRASS DRAIN VALVE

HEAT TRAP NIPPLES

BLUE DIAMOND® GLASS COATING

CODE COMPLIANCE

- Meets UBC, CEC and HUD National Codes.
- Meets the thermal efficiency and standby loss requirements of the U. S. Department of Energy and current edition of ASHRAE/IES 90.1.
- Complies with the Federal Energy Conservation Standards effective April 16, 2015, in accordance with the Energy Policy and Conservation Act, (EPCA), as amended.

DESIGN-CERTIFIED BY CSA INTERNATIONAL

- Certified at 300 psi test pressure and 150 psi working pressure.
- Listed according to ANSI Z21.10.1-CSA 4.1 standards governing storage tank-type water heaters.

6-YEAR LIMITED TANK AND PARTS WARRANTY

- For complete information, consult written warranty or go to statewaterheaters.com.



Model Number	Gallon Capacity	First Hour Rating Gallon	Energy Factor	BTU Input Natural Gas	BTU Input Propane Gas	Recovery 90°F Rise Gallon Per Hour	Dimensions in Inches				Approx. Shipping Weight (lbs)
							Height to Top of Draft Hood	Height to Top of Tank	Diameter	Draft Hood	
Tall Models											
†GS6 30 ORBT	30	64	0.63	35,500	32,000	37	61-1/2	58	16	3 or 4	123
GS6 30 OCT	30	67	0.63	35,500	32,000	37	61-1/2	58	18	3 or 4	132
‡GS6 40 OCT	40	67	0.62	35,500	N/A	38	61-3/4	58-1/4	20	3 or 4	138
†GS6 40 BRBT	40	70	0.62	40,000	36,000	42	61-3/4	58-1/4	18	3 or 4	130
GS6 40 BCT*	40	70	0.62	40,000	36,000	42	61-3/4	58-1/4	20	3 or 4	138
GS6 50 BRT*	50	88	0.60	40,000	37,000	41	60-3/4	57-1/4	21	3 or 4	148
GS6 50 BCT*	50	88	0.62	40,000	37,000	43	60-3/4	57-1/4	22	3 or 4	165
GS6 50 RCT*	50	92	0.6	50,000	45,000	54	60-3/4	57-1/4	22	4	165
†GS6 50 XCT*	50	98	0.6	60,000	54,000	65	65-1/2	61	22	4	182
GS6 55 XCT*	55	106	0.59	60,000	54,000	65	59-3/4	55-1/4	24	4	185
Short Models											
†GS6 30 ORBS	30	56	0.63	35,500	32,000	37	50	46-1/2	18	3 or 4	110
GS6 30 OCS	30	62	0.63	35,500	32,000	37	50	46-1/2	20	3 or 4	118
†GS6 40 BRBS	40	67	0.62	40,000	36,000	41	51-1/2	48	20	3 or 4	134
GS6 40 BCS	40	68	0.62	40,000	36,000	41	51-1/2	48	22	3 or 4	135
GS6 50 BCS	50	93	0.60	40,000	40,000	43	53-1/4	49-3/4	24	3 or 4	177

Water connection is 3/4" on all models.

*Optional side-mounted recirculating taps, add "L" to the suffix in the model number (GS6 40 RCTL).

† Models ship with supplied insulation blanket.

For 10-year tank and 6-year parts limited warranty, change "6" to "X" in the model number (example: GSX 30 OCT).

All models approved for installation from sea level to 10,100 ft. elevation.

‡ LP models not available on GS6 40 OCT.

PROLINE® MOBILE HOME ATMOSPHERIC VENT

COMPLIES WITH HUD STANDARDS FOR MANUFACTURED HOUSING INSTALLATION

GAS CONTROL CONVERTIBLE FOR NATURAL AND PROPANE GAS

- For flexibility to meet the varying needs of manufactured housing installations.

SIDE-MOUNTED 3/4" COLD WATER INLET

- For ease of installation when cold water supply originates below the structure.
- Top mounted 3/4" hot water outlet.

GREEN CHOICE® GAS BURNER

- Patented eco-friendly burner design reduces NOx emissions by up to 33% and complies with Low-NOx emission requirements of less than 40 ng/J.

COREGARD™ ANODE ROD

BLUE DIAMOND® GLASS COATING

ENHANCED-FLOW BRASS DRAIN VALVE

CODE COMPLIANCE

- Meets UBC, CEC and HUD National Codes.
- Meets the thermal efficiency and standby loss requirements of the U.S. Department of Energy and current edition of ASHRAE/IES 90.1.
- Complies with the Federal Energy Conservation Standards effective April 16, 2015, in accordance with the Energy Policy and Conservation Act (EPCA), as amended.

DESIGN-CERTIFIED BY CSA INTERNATIONAL

- Certified at 300 psi test pressure and 150 psi working pressure.
- Listed according to ANSI Z21.10.1-CSA4.1 standards governing storage tank-type gas water heaters.

CSA CERTIFIED AND ASME RATED T&P RELIEF VALVE

6-YEAR LIMITED TANK AND PARTS WARRANTY

- For complete information, consult written warranty or go to statewaterheaters.com.



Model Number	Gallon Capacity	First Hour Rating Gallon	Energy Factor	BTU Input Per Hour Natural Gas	BTU Input Per Hour Propane Gas	Recovery @ 90°F Rise Gallon Per Hour	Dimensions in Inches					Approx. Shipping Weight (lbs)
							Insulation	Height to Top of Draft	Height to Top of Tank	Diameter	Draft Hood Outlet	
GS6 30 MHG	30	55	0.63	35,500	32,000	36	2	61-1/2	58	18	3 or 4	129
GS6 40 MHG	40	62	0.62	35,500	32,000	36	2	61-3/4	58-1/4	20	3 or 4	153

All models ship from the factory for use with natural gas. A complete propane (LP) burner is supplied for converting to propane gas.
All models are certified from sea level to 10,100 ft. elevation.
No option available for top T&P.

PROLINE® MOBILE HOME DIRECT VENT



COMPLIES WITH HUD STANDARDS FOR MANUFACTURED HOUSING INSTALLATION GAS CONTROL CONVERTIBLE FOR NATURAL AND PROPANE GAS

- For flexibility to meet the varying needs of manufactured housing installations.

DIRECT VENT MODELS PACKAGE WITH BOTTOM INTAKE AIR VENT

- To draw all combustion make-up air from outside the structure.

OPTIONAL DUCTED AIR INLET KIT FOR DIRECT VENT MODELS

- For use when water heater is installed over a basement.
- Provision for horizontal air inlet ducting.

SIDE-MOUNTED 3/4" COLD WATER INLET

GREEN CHOICE® GAS BURNER

- Patented eco-friendly burner design reduces NOx emissions up to 33% and complies with Low-NOx emission requirements of 40 ng/J.

SELF-CLEANING DIP TUBE

COREGARD™ ANODE ROD

ENHANCED-FLOW BRASS DRAIN VALVE

BLUE DIAMOND® GLASS COATING

CODE COMPLIANCE

- Meets UBC, CEC and HUD National Codes.
- Meets the thermal efficiency and standby loss requirements of the U.S. Department of Energy and current edition of ASHRAE/IES 90.1.
- Complies with the Federal Energy Conservation Standards effective April 16, 2015, in accordance with the Energy Policy and Conservation Act (EPCA), as amended.

DESIGN-CERTIFIED BY CSA INTERNATIONAL

- Certified at 300 psi test pressure and 150 psi working pressure.
- Listed according to ANSI Z21.10.1-CSA 4.1 standards governing storage tank-type gas water heaters.

CSA CERTIFIED AND ASME RATED T&P RELIEF VALVE

6-YEAR LIMITED TANK AND PARTS WARRANTY

- For complete information, consult written warranty or go to statewaterheaters.com.

Model Number	Gallon Capacity	First Hour Rating Gallon	Energy Factor	Btu Input Per Hour Natural Gas	Btu Input Per Hour Propane	Recovery @ 90°F Rise Gallon Per Hour	Dimensions in Inches					Approx. Shipping Weight (lbs)
							Insulation	Height to Top of Draft Hood	Height to Top of Tank	Diameter	Vent Outlet	
GS6 30 MDV	30	49	0.63	30,000	29,000	31	2	61	58	18	3	129
GS6 40 MDV	40	60	0.62	32,000	29,000	33	2	61-3/4	58-3/4	20	3	153
GS6 50 MDV	50	74	0.60	40,000	37,000	39	2	60	57	22	3	168

All models ship from the factory for use with natural gas, a complete propane burner is supplied for converting to propane gas.

No option available for top T&P.

Water connections-3/4" on all models.

All models approved for installation from sea level to 5,400 ft. elevation.

THE ELECTRONIC GAS CONTROL INCORPORATES AN LED STATUS INDICATOR THAT MONITORS SYSTEM OPERATION AND SERVICE DIAGNOSTICS

HIGH ENERGY FACTORS

- Eco-friendly non-CFC foam insulation, heat traps and specially designed combustion chamber combine to produce a high Energy Factor for maximum savings on operating costs.

GREEN CHOICE® GAS BURNER

- Enhanced Ultra-low NOx burner complies with SCAQMD Rule 1121 and other air quality management districts with similar requirements for NOx emissions of less than 10 ng/J.

SELF-CLEANING DIP TUBE

COREGARD™ ANODE ROD

PUSH-BUTTON PIEZO IGNITOR

HEAT TRAP NIPPLES

BLUE DIAMOND® GLASS COATING

ENHANCED-FLOW BRASS DRAIN VALVE

CODE COMPLIANCE

- Meets UBC, CEC and HUD National Codes.
- Meets the thermal efficiency and standby loss requirements of the U.S. Department of Energy and current edition of ASHRAE/IES 90.1.
- Complies with the Federal Energy Conservation Standards effective April 16, 2015, in accordance with the Energy Policy Conservation Act (EPCA), as amended.

DESIGN-CERTIFIED BY CSA INTERNATIONAL

- Certified at 300 psi test pressure and 150 psi working pressure.
- Listed according to ANSI Z21.10.1-CSA 4.1 standards governing storage tank-type gas water heaters.

6-YEAR LIMITED TANK AND PARTS WARRANTY

- For complete information, consult written warranty or go to statewaterheaters.com



Model Number	Gallon Capacity	First Hour Rating Gallon	Energy Factor	BTU Input Natural Gas	Recovery @ 90°F Rise Gallon Per Hour	Dimensions in Inches				Approx. Shipping Weight (lbs)
						Height to Top of Draft Hood	Height to Top of Tank	Diameter	Draft Hood	
Tall Models										
GS6 30 ORUT	30	55	0.63	33,000	34	61-3/4	58	16	3 or 4	126
GS6 40 BRUT	40	71	0.62	40,000	41	62	58-1/4	18	3 or 4	125
GS6 40 BCUT	40	71	0.63	40,000	41	62	58-1/4	20	3 or 4	125
GS6 50 BRUT	50	91	0.60	40,000	42	60-3/4	57-1/4	20	3 or 4	148
GS6 50 BCUT	50	91	0.62	40,000	42	60-3/4	57-1/4	22	3 or 4	148
GS6 50 RCUT*	50	98	0.60	50,000	51	61	57-1/2	22	4	177
Short Models										
GS6 40 BCUS	40	69	0.62	40,000	41	51-1/2	47-3/4	22	3 or 4	138

All models may be ordered from the factory with top T&P valve as an option by adding "G" to the suffix of the model number (example GS6 30 ORUTG).

*Side loop connections are standard on model GS6 50 RCUT.

Most models approved for installation from sea level to 7,700 ft. elevation (except GS6 50 RCUT which is approved to 5,400 ft.).

PROLINE® ULTRA-LOW NO_x DIRECT VENT



FLAMMABLE VAPOR RESISTANT/DIRECT VENT SEALED COMBUSTION SYSTEM

DURABLE, ULTRA-LOW NO_x BURNER CONSTRUCTION

NON-CFC FOAM INSULATION

- The tank is surrounded by a thick coat of non-CFC polyurethane foam to trap heat inside the tank, saving energy.

3/4" TOP WATER CONNECTIONS AND SIDE SPACE HEATING CONNECTIONS

1/2" GAS CONNECTION

COREGARD™ ANODE ROD

BLUE DIAMOND® GLASS COATING

ENHANCED-FLOW BRASS DRAIN VALVE

GREEN CHOICE® GAS BURNER

- Complies with SCAQMD Rule 1121 and other air quality management districts with similar requirements for NO_x emissions of less than 10 ng/J.

CODE COMPLIANCE

- Meets UBC, CEC and HUD National Codes.
- Meets the thermal efficiency and standby loss requirements of the U.S. Department of Energy and current edition of ASHRAE/IES 90.1.
- Complies with the Federal Energy Conservation Standards effective April 16, 2015, in accordance with the Energy Policy and Conservation Act (EPCA), as amended.

CSA CERTIFIED AND ASME RATED T&P RELIEF VALVE

6-YEAR LIMITED TANK AND PARTS WARRANTY

- For complete information, consult written warranty or go to statewaterheaters.com.



Model Number	Gallon Capacity	First Hour Rating Gallon	Energy Factor	BTU Input Per Hour	Recovery 90°F Rise Gallon Per Hour	Dimensions in Inches				Approx. Shipping Weight (lbs)
						Height to Top of Draft Hood	Height to Top of Tank	Diameter	Concentric Vent Connection	
GS6 40 UBDS L	40	59	0.62	36,000	39	65-1/4	50-1/2	22	3 and 5	179
GS6 50 UBDT L	50	81	0.62	38,000	41	73-1/2	58-1/2	22	3 and 5	193

No option available for top T&P valve.
 All models have 3/4" top water connections and come standard with side loop fittings.
 All models are certified from sea level to 7,700 ft. elevations.

PROLINE® ULTRA-LOW NOx HIGH RECOVERY

FULLY AUTOMATIC CONTROLS WITH SAFETY SHUTOFF

HEAVY GAUGE STEEL JACKET

BLUE DIAMOND® GLASS COATING

FOAM INSULATION

ULTRA-LOW NOx EMISSIONS

- Complies with SCAQMD Rule 1146.2 and other Air Quality Management Districts with similar requirements of 14 ng/J or 20 ppm.

EASY-TO-INSTALL

- Completely factory-assembled. Only gas, water and vent connections need to be made. All connections are located in front and top of heaters for ease-of-installation and service.

COREGARD™ ANODE ROD

- Our anode rods have a stainless steel core that extends the life of the anode rod, allowing superior tank protection far longer than standard anode rods.

MAXIMUM WORKING PRESSURE

- 150 psi.

MAXIMUM GAS INLET PRESSURE

- 14" W.C.

CODE COMPLIANCE

- Meets UBC, CEC and ICC National Codes.
- The Ultra-Low NOx atmospheric vent residential gas water heater meets the thermal efficiency and standby loss requirements of the U.S. Department of Energy and Current Edition ASHRAE/IES 90.1.

6-YEAR LIMITED TANK AND PARTS WARRANTY

- For complete information, consult written warranty or go to statewaterheaters.com.



Model Number	Gallon Capacity	Recovery @ 90°F Rise Gallon Per Hour	BTU Input Per Hour	Dimensions in Inches			Approx. Shipping Weight
				Height to Top of Draft Hood	Depth	Diameter	
†GS6 75 URRS	74	81	75,100	62-1/16	29-1/2	25-1/4	285 lbs
GS6 100 URRT	98	82	75,100	70-1/2	30-15/16	27-3/4	350 lbs

*Recovery rating based on 81% thermal efficiency

**Recovery rating based on 80% thermal efficiency

†The GS6-75-URRS comes standard with side loop fittings for use with hydronic heating applications

PROLINE® XE HYBRID ELECTRIC HEAT PUMP WATER HEATER

PROLINE® XE
BEST



INCREASED ENERGY EFFICIENCY

- Reduce water heating costs up to 71% compared to a standard electric water heater.
- Up to a 3.24 Energy Factor (EF) Rating conserves energy and meets ENERGY STAR® qualifications.

DUAL VOLTAGE CAPABLE

- 208/240 VAC 60Hz capable for use in almost any residential application.

CHOICE OF OPERATING MODES

- Select from Efficiency, Hybrid, or Electric modes to match heating requirements to environmental conditions and hot water demand. Hybrid mode automatically adjusts between compressor and element, depending upon heat requirements.
- Vacation mode reduces operating costs and provides freeze protection during extended absence.

BACKUP ELECTRIC ELEMENTS

- Long-lasting 4500W backup heating elements help heat water according to environmental conditions, demand and the chosen operating mode.

DRY FIRE PROTECTION

- Control system ensures the tank is full of water during start up to prevent dry firing the heating elements.

ELECTRONIC USER INTERFACE

- User-friendly electronic interface allows easy control of temperature setting, operating mode, and communicates diagnostics.
- Advanced diagnostics convey error messages for service purposes. The last four error messages are saved in the control system memory.

OTHER FEATURES

- Ideal for basements or garage installations; the compressor transfers heat to the water while dehumidifying and cooling the ambient air.
- Washable air filter is easily removed for routine cleaning.
- Accessory Inlet/Outlet Duct Kit (Part number 100234320).

10-YEAR LIMITED WARRANTY

- For complete information, consult written warranty or go to statewaterheaters.com.

Model Number	Gallon Capacity	Energy Factor by Mode			1st Hour Rating (Gal) By Mode			Dimensions in Inches			Approx. Shipping Weight (lbs)
		Efficiency	Hybrid	Electric	Efficiency	Hybrid	Electric	Height to Top of Tank	Height to T&P	Diameter	
HPX 50 DHPTNE	50	3.61	3.24	0.93	44.4	70	57.3	63	40-5/8	22	196
HPX 66 DHPTNE	66	3.44	3.17	0.92	62.5	80	78.6	61	38	27	289
HPX 80 DHPTNE	80	3.27	3.06	0.92	76.3	95	90.1	69	46	27	307

Requires 30 amp breaker.
Top T&P option not available.

PROLINE® XE HYBRID ELECTRIC HEAT PUMP WATER HEATER

PROLINE® XE
BEST

INCREASED ENERGY EFFICIENCY

- Reduce water heating costs up to 71% compared to a standard electric water heater.
- Up to a 3.24 Energy Factor (EF) Rating conserves energy and meets ENERGY STAR® qualifications.

DUAL VOLTAGE CAPABLE

- 208/240 VAC 60Hz capable for use in almost any residential application.

CHOICE OF OPERATING MODES

- Select from Efficiency, Hybrid, or Electric modes to match heating requirements to environmental conditions and hot water demand. Hybrid mode automatically adjusts between compressor and element, depending upon heat requirements.
- Vacation mode reduces operating costs and provides freeze protection during extended absence.

BACKUP ELECTRIC ELEMENTS

- Long-lasting 4500W backup heating elements help heat water according to environmental conditions, demand and the chosen operating mode.

DRY FIRE PROTECTION

- Control system ensures the tank is full of water during start up to prevent dry firing the heating elements.

ELECTRONIC USER INTERFACE

- User-friendly electronic interface allows easy control of temperature setting, operating mode, and communicates diagnostics.
- Advanced diagnostics convey error messages for service purposes. The last four error messages are saved in the control system memory.

OTHER FEATURES

- Ideal for basements or garage installations; the compressor transfers heat to the water while dehumidifying and cooling the ambient air.
- Washable air filter is easily removed for routine cleaning.
- Accessory Inlet/Outlet Duct Kit (Part number 100234320).

6-YEAR LIMITED WARRANTY

- For complete information, consult written warranty or go to statewaterheaters.com.

PROLINE® XE
BEST



Model Number	Gallon Capacity	Energy Factor by Mode			1st Hour Rating (Gal) By Mode			Dimensions in Inches			Approx. Shipping Weight (lbs)
		Efficiency	Hybrid	Electric	Efficiency	Hybrid	Electric	Height to Top of Tank	Height to T&P	Diameter	
HP6 50 DHPT	50	3.61	3.24	0.93	44.4	70	57.3	63	40-5/8	22	196
HP6 66 DPHT	66	3.44	3.17	0.92	62.5	80	78.6	61	38	27	289
HP6 80 DHPT	80	3.27	3.06	0.92	76.3	95	90.1	69	46	27	307

Requires 30 amp breaker.
Top T&P option not available.

PROLINE® XE ELECTRONIC DISPLAY

PROLINE® XE
BEST



ELECTRONIC USER INTERFACE

- Touchscreen display.
- Multiple operating modes help save money.
 - Energy saver and vacation modes available.
- Diagnostic feedback.
- Dry fire protection.
- Grid management capable, requires optional CEA-2045 Bridge module.

ENHANCED HEATING ELEMENTS

- Dual 5500 watt elements for the fastest recovery and reliable operation.
- Incoloy stainless steel elements last longer than standard copper elements.

ENHANCED-FLOW BRASS DRAIN VALVE

CODE COMPLIANCE

- Meets UBC, CEC and HUD National Codes.
- Meets the thermal efficiency and standby loss requirements of the U.S. Department of Energy and current edition of ASHRAE/IES 90.1.
- Complies with the Federal Energy Conservation Standards effective April 16, 2015, in accordance with the Energy Policy and Conservation Act (EPCA), as amended.

APPROVED FOR MANUFACTURED HOUSING

- All residential electric water heaters are compliant with HUD standards for mobile homes/manufactured housing.

DESIGN-LISTED BY UNDERWRITERS LABORATORIES

- Certified at 300 psi test pressure and 150 psi working pressure.
- Listed according to UL174 standards governing storage tank-type water heaters.

10-YEAR LIMITED TANK AND PARTS WARRANTY

- For complete information, consult written warranty or go to statewaterheaters.com.

Model Number	Gallon Capacity	First Hour Rating Gallon	Energy Factor	Recovery @ 90°F Rise Gallon Per Hour	Element Wattage 240V		Dimensions in Inches			Approx. Shipping Weight (lbs)
					Standard	Maximum	Height to Top of Tank	Height to T&P	Diameter	
Tall Models										
ENX 40 DXRT	40	54	0.95	25	5500	5500	61-1/4	53-1/4	20	118
ENX 50 DXRT	50	67	0.95	25	5500	5500	60-1/2	51-1/4	22	134
ENX 55 DXRT	55	79	0.94	25	5500	5500	56-1/2	48-1/2	24	145
Short Models										
ENX 40 DXRS	40	56	0.95	25	5500	5500	49 3/4	40-3/4	20-1/2	109
ENX 50 DXRS	50	71	0.95	25	5500	5500	49-1/4	40-1/4	23	161

3/4" water connections on 8" center.
 Top-mounted T&P valve not available.
 Only available for 240V or 208V applications.
 Equipped as dual element only; no single element configurations available.

COMMERCIAL-GRADE HEATING ELEMENTS

- Dual 4500 watt elements for faster recovery and reliable operation.
- Incoloy stainless steel upper and lower elements lasts longer than standard copper elements.

BLUE DIAMOND® GLASS COATING

- Blue Diamond® Glass Coating blend is formulated in the same lab that creates the protection for our industry-leading commercial product line.

HIGH ENERGY FACTORS

SELF CLEANING DIP TUBE

COREGARD™ ANODE ROD

- ProLine® Master products have increased anode protection with either longer, or multiple anodes depending on model.

CODE COMPLIANCE

- Meets UBC, CEC and HUD National Codes.
- Meets the thermal efficiency and standby loss requirements of the U.S. Department of Energy and current edition of ASHRAE/IES 90.1.
- Complies with the Federal Energy Conservation Standards effective April 16, 2015, in accordance with the Energy Policy and Conservation Act (EPCA), as amended.

APPROVED FOR MANUFACTURED HOUSING

- All residential electric water heaters are compliant with HUD standards for mobile homes/manufactured housing.

DESIGN-LISTED BY UNDERWRITERS LABORATORIES

- Certified at 300 psi test pressure and 150 psi working pressure.
- Listed according to UL174 standards governing storage tank-type water heaters.

8-YEAR LIMITED TANK AND PARTS WARRANTY

- For complete information, consult written warranty or go to statewaterheaters.com.



Model Number	Gallon Capacity	First Hour Rating Gallon	Energy Factor	Recovery @ 90 F Rise Gallon Per Hour	Element Wattage 240V		Dimensions in Inches			Approx. Shipping Weight (lbs)
					Standard	Maximum	Height to Top of Tank	Height to T&P	Diameter	
Tall Models										
EN8 40 DORT	40	50	0.95	21	4500	6000	61-1/4	53-1/4	18	118
EN8 50 DORT	50	73	0.95	21	4500	6000	60-1/2	51-1/4	20-1/2	125
EN8 55 DORT	55	76	0.94	21	4500	6000	56-1/2	48-1/2	24	145
Short Models										
EN8 40 DORS	40	55	0.95	21	4500	6000	50	40-3/4	20-1/2	109
EN8 50 DORS	50	62	0.95	21	4500	6000	49-3/4	40-3/8	23	161

3/4" water connections on 8" center only available for 240V or 208V applications.



Low Lead Content

ENHANCED HEATING ELEMENTS

- Dual 4500 watt elements for faster recovery and reliable operation.
- Incoloy stainless steel lower element lasts longer than a standard copper element.

HIGH ENERGY FACTORS

SELF CLEANING DIP TUBE

COREGARD™ ANODE ROD

- Increased anode protection with either longer or multiple anodes depending on model.

LONG-LASTING STAINLESS STEEL UPPER AND LOWER ELEMENTS

CODE COMPLIANCE

- Meets UBC, CEC and HUD National Codes.
- Meets the thermal efficiency and standby loss requirements of the U.S. Department of Energy and current edition of ASHRAE/IES 90.1.
- Complies with the Federal Energy Conservation Standards effective April 16, 2015, in accordance with the Energy Policy and Conservation Act (EPCA), as amended.

APPROVED FOR MANUFACTURED HOUSING

- All residential electric water heaters are compliant with HUD standards for mobile homes/manufactured housing.

DESIGN-LISTED BY UNDERWRITERS LABORATORIES

- Certified at 300 psi test pressure and 150 psi working pressure.
- Listed according to UL174 standards governing storage tank-type water heaters.

6-YEAR LIMITED TANK AND PARTS WARRANTY

- For complete information, consult written warranty or go to statewaterheaters.com.

Model Number	Gallon Capacity	First Hour Rating Gallon	Energy Factor	Recovery @ 90°F Rise Gallon Per Hour	Element Wattage 240V		Dimensions in Inches			Approx. Shipping Weight (lbs)
					Standard	Maximum	Height to Top of Tank	Height to T&P	Diameter	
Tall Models										
†ENG 30 DORT	30	47	0.95	21	4500	6000	46-1/2	39-1/2	19	95
†ENG 40 DORT	40	50	0.95	21	4500	6000	61-1/4	53-1/4	18	118
†ENG 50 DORT	50	73	0.95	21	4500	6000	60-1/2	51-1/4	20-1/2	125
†ENG 55 DORT	55	76	0.94	21	4500	6000	56-1/2	48-1/2	24	145
Short Models										
ENG 30 DOBS*	30	48	0.95	21	4500	6000	39	30-1/2	20	95
†ENG 30 DORS	30	49	0.95	21	4500	6000	39-3/4	30-1/2	22	94
†ENG 40 DORS	40	55	0.95	21	4500	6000	49-3/4	40-3/4	20-1/2	109
†ENG 50 DORS	50	62	0.95	21	4500	6000	49-1/4	40-3/8	23	161
Lowboy Top Connect Models										
ENG 20 SOLS	19.5	N/A	N/A	21	4500	6000	30	21-1/4	20	65
†ENG 30 DOLBS*	28	40	0.95	21	4500	6000	30	21-3/4	20	90
†ENG 30 DOLS	28	42	0.95	21	4500	6000	30	21-3/4	22	115
†ENG 36 DOLS	36	46	0.95	21	4500	6000	32	24	24	118
†ENG 40 DOLBS*	38	44	0.95	21	4500	6000	32	24	23	118
†ENG 50 DOLBS*	48	57	0.95	21	4500	6000	34	25	26-1/2	172

3/4" water connections on 8" center.

*Models ship with supplied insulation blanket.

†For 10-year tank and 6-year parts limited warranty, change "N6" to "SX" in Select models and "R" to "N" in tall and short model numbers (example: ESX 40 DONT).

Only available for 240V or 208V applications.

ENG 20 SOLS is a single element configuration only.

Top T&P is not available on the 10 year lowboy models.

APPROVED FOR MANUFACTURED HOUSING

- All residential electric water heaters are compliant with HUD Standards for mobile homes/manufactured housing.

SIDE WATER CONNECTIONS

- For ease of installation in mobile home applications.

COREGARD™ ANODE ROD

- Our anode rods have a stainless steel core that extends the life of the anode rod allowing superior tank protection far longer than standard anode rods.

LONG-LASTING HEATING ELEMENTS

- Screw-in, direct immersion, 3500W/240V or 3000W/120V heating elements for maximum efficiency.

BLUE DIAMOND® GLASS COATING

ENHANCED-FLOW BRASS DRAIN VALVE

- Our residential water heaters have a solid brass, tamper resistant, enhanced-flow, ball type, drain valve.
- Uses a standard female hose fitting that allows for fast and easy draining during maintenance.

CSA CERTIFIED AND ASME RATED T&P RELIEF VALVE

CODE COMPLIANCE

- Meets UBC, CEC and HUD National Codes.
- Meets the thermal efficiency and standby loss requirements of the U. S. Department of Energy and current edition of ASHRAE/IES 90.1.
- Complies with the Federal Energy Conservation Standards effective April 16, 2015, in accordance with the Energy Policy and Conservation Act (EPCA), as amended.

DESIGN-LISTED BY UNDERWRITERS LABORATORIES

- Certified at 300 psi test pressure and 150 psi working pressure.
- Listed according to UL174 standards governing storage tank-type water heaters.

6-YEAR LIMITED TANK AND PARTS WARRANTY

- For complete information, consult written warranty or go to statewaterheaters.com.



Model Number	Gallon Capacity	First Hour Rating Gallon	Energy Factor	Recovery @ 90°F Rise Gallon Per Hour	Voltage	Wattage		Dimensions in Inches			Approx. Shipping Weight (lbs)
						Upper Element	Lower Element	Height to Top of Heater	Height to T&P	Diameter	
MHE6-30H-030D	30	42	0.95	14	120	3000	3000	46-3/4	39-1/2	19	98
MHE6-30H-035D	30	42	0.95	16	240	3500	3500	46-3/4	39-1/2	19	98
MHE6-40H-030D	40	51	0.95	14	120	3000	3000	50	40-3/4	22	109
MHE6-40H-035D	40	51	0.95	16	240	3500	3500	50	40-3/4	22	109
MHE6-30L-030D*	28	40	0.95	14	120	3000	3000	30	21-3/4	22	96
MHE6-30L-035D*	28	40	0.95	16	240	3500	3500	30	21-3/4	22	96

*Models ship with supplied insulation blanket.

MHE6 models may have limited element options due to element size or other restrictions.

3/4" water connections

Available with side T&P only.



Table Top

Point-Of-Use



Compact

Lowboy



Low Lead Content

APPROVED FOR MANUFACTURED HOUSING

- All residential electric water heaters are compliant with HUD standards for mobile homes/manufactured housing.

LOWBOY

- Side water connections for applications where hand-room is limited.

TABLE TOP

- Features a convenient flat porcelain surface at 36" height, providing extra "counter space" wherever installed. All plumbing and electrical connections are made through the back of the water heater. This heater is equipped with a PEX cross-linked polymer dip tube.

POINT-OF-USE

- Designed for low-demand, such as office lavatories or buildings with remote restrooms.

COMPACT

- Side-mounted plumbing and electrical connections (optional top-mounted water connections for field conversion). Designed for installation under a counter, in a crawl space or in other tight spaces.

ENHANCED-FLOW BRASS DRAIN VALVE

CODE COMPLIANCE

- Meets UBC, CEC and HUD National Codes.
- Meets the thermal efficiency and standby loss requirements of the U.S. Department of Energy and current edition of ASHRAE/IES 90.1.
- Complies with the Federal Energy Conservation Standards effective April 16, 2015, in accordance with the Energy Policy and Conservation Act (EPCA), as amended.

DESIGN-LISTED BY UNDERWRITERS LABORATORIES

- Certified at 300 psi test pressure and 150 psi working pressure.
- Listed according to UL174 standards governing storage tank-type water heaters.

6-YEAR LIMITED TANK AND PARTS WARRANTY

- For complete information, consult written warranty or go to statewaterheaters.com.

Model Number	Gallon Capacity	First Hour Rating Gallon	Energy Factor	Element Wattage		Recovery @ 90°F Rise Gallons Per Hour	Dimensions in Inches		Approx. Shipping Weight (lbs)
				Standard	Maximum		Height to Top of Heater	Diameter	
Compact Models				120V	240V				
ES6 6 SOMS K	6	N/A	N/A	1650	3000	8	15-1/4	14-1/4	35
ES6 10 SOMS K	10	N/A	N/A	1650	6000	8	18-1/4	16	41
ES6 20 SOMS K	19	N/A	N/A	2500	6000	11	24-3/4	18	68
ES6 20 SOMT K	19.9	N/A	N/A	2500	6000	11	31-5/8	16	68
Lowboy Side-Connect Models				240V					
EN6 30 DOMBS*	28	39	0.95	4500	6000	21	30	22	101
EN6 30 DOMS	28	39	0.95	4500	6000	21	31-1/4	24	115
EN6 40 DOMBS*	38	47	0.95	4500	6000	21	31-3/4	24	118
EN6 40 DOMS	38	44	0.95	4500	6000	21	33-1/2	26	118
Table Top Model				240V					
EN6 38 20TT	38	45	0.88	4500	5500	21	36	25	150
Point-Of-Use-Model				120V					
ES6 2 SSUS K	2.5	N/A	N/A	1500 @ 120V		7	13-3/4	13-3/4	20

*Models ship with a supplied insulation blanket.

PROLINE® XE TANKLESS CONDENSING WITH RECIRCULATION PUMP

PROLINE® XE
BEST

INTEGRATED RECIRCULATION PUMP

- 1/2" pipe - 100'
- 3/4" pipe - 500'

PUMP CONTROLS

- Included with heater
- Two timer settings
- Adjustable differential settings.

ENERGY STAR® QUALIFIED

ULTRA-LOW NOX EMISSIONS

- Complies with SCAQMD 1146.2 NOx emission requirements of 14 ng/J or 20 PPM

INDOOR MODELS

- Include integrated temperature and pump controls with advanced diagnostics that simplify installation and troubleshooting.
- Factory-installed power cord.

OUTDOOR MODELS

- Includes a wall mount temperature remote controller and advanced diagnostics to simplify troubleshooting.

COMMON VENT INDOOR MODELS

EASY-LINK 540P WITH THREE OTHER 540H TO INCREASE FLOW RATE

SAFETY FEATURES:

- Air-Fuel Ratio (AFR) Sensor.
- Exhaust & Water Temperature Safety Control.
- Overheat Cut-Off Fuse.

INTERNAL FREEZE PROTECTION SYSTEM

WARRANTY

- 15-year limited warranty on heat exchanger in residential applications
- 6-year limited warranty on heat exchanger in commercial applications
- 5-year limited warranty on all parts
- For complete information, consult written warranty or go to statewaterheaters.com.



Indoor Model

Outdoor Model



ANSI Z21.10.3

CSA 4.3

Model Number*	Type	Gas Consumption Input		Inlet Gas Pressure***		Energy Factor (EF)	Connections		Sizing Chart (Number of Showers)		Clearances (in.)				Approx Shipping Weight (lbs)
		Minimum** (BTU/H)	Maximum (BTU/H)	Minimum (in. W.C.)	Maximum (in. W.C.)		Water	Gas	Cold Climate†	Warm Climate‡	Top	Bottom	Side	Front	
GTS-540P-NIH	Natural	15,000	199,000	4.0	10.5	0.95	3/4" NPT	3/4" NPT	3	4.5	12	12	3	4	61

* For outdoor models, change "NIH" to "NEH". For propane models, change "N" to "P".

** For propane models, minimum is 13,000.

*** For propane models, minimum inlet gas pressure is 8.0 in. W.C. and maximum inlet gas pressure is 14.0 in. W.C.

† Cold climate represents 70°F temperature rise.

‡ Warm climate represents 50°F temperature rise.

PROLINE® XE TANKLESS CONDENSING HIGH EFFICIENCY

PROLINE® XE
BEST

PROLINE® XE
BEST



Outdoor Model

Indoor Model



Meets SCAQMD Rule 1146.2
National Air Pollution
Control Administration



ANSI Z21.10.3

CSA 4.3

ENERGY STAR® QUALIFIED CONDENSING TECHNOLOGY PROVIDES 0.95 ENERGY FACTOR ULTRA-LOW NO_x EMISSIONS

- Complies with SCAQMD Rule 1146.2 NO_x emission requirements of 14 ng/J or 20 PPM.

MAXIMUM FLOW RATES UP TO 10.0 GPM HEAT EXCHANGER

- Primary heat exchanger of the GTS-540 is constructed of a commercial-grade copper that is more resilient to erosion.
- Copper is 25x better at heat transfer than stainless steel thus stabilizing outgoing water temperatures quicker and reducing pressure drop across the heat exchanger.
- Secondary heat exchanger is made of marine-grade 316L stainless steel to protect against corrosion.

INDOOR MODELS

- Include integrated temperature controls and advanced diagnostics to simplify troubleshooting.
- Include factory-installed power cords.

OUTDOOR MODELS

- Include wall mount temperature remote controller and advanced diagnostics to simplify troubleshooting.

COMMON VENT INDOOR MODELS UP TO 8 UNITS

540H CAN BE USED IN BOTH RESIDENTIAL AND COMMERCIAL APPLICATIONS

- Easy-link up to 4 heaters.
- Multi-link up to 20 heaters.

SAFETY FEATURES

- Air-fuel Ratio (AFR) Sensor.
- Exhaust and water temperature safety control.
- Overheat cut-off fuse.

INTERNAL FREEZE PROTECTION SYSTEM

POWER VENT OR POWER DIRECT VENT DESIGN

WARRANTY

- 15-year limited warranty on heat exchanger in residential applications.
- 6-year limited warranty on heat exchanger in commercial applications.
- 5-year limited warranty on all parts.
- For complete information, consult written warranty or go to statewaterheaters.com.

Model Number*	Type	Gas Consumption Input		Inlet Gas Pressure***		Energy Factor (EF)	Connections		Sizing Chart (Number of Showers)		Clearances (in.)				Approx Shipping Weight (lbs)
		Minimum** (BTU/H)	Maximum (BTU/H)	Minimum (in. W.C.)	Maximum (in. W.C.)		Water	Gas	Cold Climate†	Warm Climate‡	Top	Bottom	Side	Front	
GTS-140-NIH	Natural	15,000	120,000	4.0	10.5	0.93	3/4" NPT	1/2" NPT	1.5	2.5	12	12	3	4	52

*For outdoor models, change "NIH" to "NEH". For propane models, change "N" to "P".

**For propane models, minimum is 13,000.

***For propane models, minimum inlet gas pressure is 8.0 in. W.C. and maximum inlet gas pressure is 14.0 in. W.C.

† Cold climate represents 70°F temperature rise.

‡ Warm climate represents 50°F temperature rise.

PROLINE® XE TANKLESS CONDENSING HIGH EFFICIENCY

PROLINE® XE
BEST

ENERGY STAR® QUALIFIED CONDENSING TECHNOLOGY PROVIDES 0.95 ENERGY FACTOR ULTRA-LOW NO_x EMISSIONS

- Complies with SCAQMD Rule 1146.2 NO_x emission requirements of 14 ng/J or 20 PPM.

MAXIMUM FLOW RATES UP TO 10.0 GPM HEAT EXCHANGER

- Primary heat exchanger of the GTS-540 is constructed of a commercial-grade copper that is more resilient to erosion.
- Copper is 25x better at heat transfer than stainless steel thus stabilizing outgoing water temperatures quicker and reducing pressure drop across the heat exchanger.
- Secondary heat exchanger is made of marine-grade 316L stainless steel to protect against corrosion.

INDOOR MODELS

- Include integrated temperature controls and advanced diagnostics to simplify troubleshooting.
- Include factory-installed power cords.

OUTDOOR MODELS

- Include wall mount temperature remote controller and advanced diagnostics to simplify troubleshooting.

COMMON VENT INDOOR MODELS UP TO 8 UNITS

540H CAN BE USED IN BOTH RESIDENTIAL AND COMMERCIAL APPLICATIONS

- Easy-link up to 4 heaters.
- Multi-link up to 20 heaters.

SAFETY FEATURES

- Air-fuel Ratio (AFR) Sensor.
- Exhaust and water temperature safety control.
- Overheat cut-off fuse.

INTERNAL FREEZE PROTECTION SYSTEM

POWER VENT OR POWER DIRECT VENT DESIGN

WARRANTY

- 15-year limited warranty on heat exchanger in residential applications.
- 6-year limited warranty on heat exchanger in commercial applications.
- 5-year limited warranty on all parts.
- For complete information, consult written warranty or go to statewaterheaters.com.



ANSI Z21.10.3

CSA 4.3

Model Number*	Type	Gas Consumption Input		Inlet Gas Pressure***		Energy Factor (EF)	Connections		Sizing Chart (Number of Showers)		Clearances (in.)				Approx Shipping Weight (lbs)
		Minimum** (BTU/H)	Maximum (BTU/H)	Minimum (in. W.C.)	Maximum (in. W.C.)		Water	Gas	Cold Climate†	Warm Climate‡	Top	Bottom	Side	Front	
GTS-240H-NIH	Natural	15,000	160,000	4.0	10.5	0.95	3/4" NPT	3/4" NPT	2.5	2.5	12	12	3	4	62
GTS-340H-NIH	Natural	15,000	180,000	4.0	10.5	0.95	3/4" NPT	3/4" NPT	2.5	3.5	12	12	3	4	62
GTS-540H-NIH	Natural	15,000	199,000	4.0	10.5	0.95	3/4" NPT	3/4" NPT	3	4.5	12	12	3	4	63

*For outdoor models, change "NIH" to "NEH". For propane models, change "N" to "P".

**For propane models, minimum is 13,000.

***For propane models, minimum inlet gas pressure is 8.0 in. W.C. and maximum inlet gas pressure is 14.0 in. W.C.

† Cold climate represents 70°F temperature rise.

‡ Warm climate represents 50°F temperature rise.

PROLINE® XE TANKLESS NON-CONDENSING CONCENTRIC VENT

PROLINE® XE
BEST



(510c model only)



ANSI Z21.10.3

CONCENTRIC VENT DESIGN

- Power direct vent.
- Vertical or horizontal venting up to 43'.

FIELD CONVERTIBLE FROM NATURAL GAS TO PROPANE

ULTRA-LOW NO_x EMISSIONS

- Complies with SCAQMD Rule 1146.2 NO_x emission requirements of 14 ng/J or 20 PPM.

MAXIMUM FLOW RATES UP TO 10.0 GPM

PRIMARY HEAT EXCHANGER

- Primary heat exchanger of the GTS-510C is constructed of a commercial-grade copper that is more resilient to erosion.
- Copper is 25x better at heat transfer than stainless steel thus stabilizing outgoing water temperatures quicker and reducing pressure drop across the heat exchanger.

INDOOR MODELS ONLY

- Include integrated temperature controls and advanced diagnostics to simplify troubleshooting.
- Include factory-installed power cords.

GTS-510C CAN BE USED IN BOTH RESIDENTIAL AND COMMERCIAL APPLICATIONS

- Easy-Link up to 4 units.
- Multi-Link up to 20 units.

SAFETY FEATURES

- Air-Fuel Ratio (AFT) sensor.
- Water temperature safety control.
- Overheat cut-off fuse.

INTERNAL FREEZE PROTECTION

WARRANTY

- 15-year limited warranty on heat exchanger in residential applications.
- 6-year limited warranty on heat exchanger in commercial applications.
- 5-year limited warranty on all parts.
- For complete information, consult written warranty or go to statewaterheaters.com.

Model Number*	Gas Consumption Input		Inlet Gas Pressure**		Energy Factor (EF)	Connections		Sizing Chart (Number of Showers)		Clearances (in.)				Approx Shipping Weight (lbs)
	Minimum (BTU/H)	Maximum (BTU/H)	Minimum (in. W.C.)	Maximum (in. W.C.)		Water	Gas	Cold Climate†	Warm Climate‡	Top	Bottom	Side	Front	
GTS-110C-N	15,000	140,000	4.0	10.5	0.82	3/4" NPT	3/4" NPT	1.5	2.5	12	12	3	4	55
GTS-310C-N	15,000	190,000	4.0	10.5	0.82	3/4" NPT	3/4" NPT	2.5	3.5	12	12	3	4	55
GTS-510C-N	15,000	199,000	4.0	10.5	0.82	3/4" NPT	3/4" NPT	2.5	3.5	12	12	3	4	55

*Indoor models only. Units are field convertible from natural gas to propane with supplied conversion kit.

**For propane models, minimum inlet gas pressure is 8.0 in. W.C. and maximum inlet gas pressure is 14.0 in. W.C.

† Cold climate represents 70°F temperature rise

‡ Warm climate represents 50°F temperature rise

PROLINE® XE TANKLESS NON-CONDENSING

PROLINE® XE
BEST

MAXIMUM FLOW RATES UP TO 10.0 GPM

COPPER PRIMARY HEAT EXCHANGER

- Primary heat exchanger of the GTS-510 is constructed of a commercial-grade copper that is more resilient to erosion.
- Copper is 25x better at heat transfer than stainless steel thus stabilizing outgoing water temperatures quicker and reducing pressure drop across the heat exchanger.

INDOOR MODELS

- Include a remote control with advanced diagnostics to simplify installation and troubleshooting.
- Include factory-installed power cords.

OUTDOOR MODELS

- Include a wall mount temperature remote controller with advanced diagnostics to simplify installation and troubleshooting.

LOW NO_x EMISSION

GTS-510 MODELS CAN BE USED IN BOTH RESIDENTIAL AND COMMERCIAL APPLICATIONS

EASY-LINK UP TO 4 UNITS (510 MODELS)

POWER VENT AND POWER DIRECT VENT DESIGN

SAFETY FEATURES

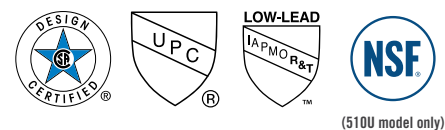
- Air-fuel Ratio (AFR) Sensor.
- Water temperature safety control.
- Overheat cut-off fuse.

INTERNAL FREEZE PROTECTION

POWER VENT OR POWER DIRECT VENT DESIGN

WARRANTY

- 15-year limited warranty on heat exchanger in residential applications.
- 6-year limited warranty on heat exchanger in commercial applications.
- 5-year limited warranty on all parts.
- For complete information, consult written warranty or go to statewaterheaters.com.



ANSI Z21.10.3

CSA 4.3

Model Number*	Type	Gas Consumption Input		Inlet Gas Pressure**		Energy Factor (EF)	Connections		Sizing Chart (Number of Showers)		Clearances (in.)				Approx Shipping Weight (lbs)
		Minimum (BTU/H)	Maximum (BTU/H)	Minimum (in. W.C.)	Maximum (in. W.C.)		Water	Gas	Cold Climate†	Warm Climate‡	Top	Bottom	Side	Front	
GTS-110-NI	Natural	19,500	140,000	4.0	10.5	0.82	3/4" NPT	3/4" NPT	1.5	2.5	12	12	3	4	38
GTS-310-NI	Natural	11,000	190,000	4.0	10.5	0.82	3/4" NPT	3/4" NPT	2.5	3.5	12	12	3	4	43
GTS-510-NI	Natural	11,000	199,000	4.0	10.5	0.82	3/4" NPT	3/4" NPT	2.5	3.5	12	12	3	4	45

*For outdoor models, change "NI" to "NE". For propane models, change "N" to "P".

For propane models, minimum is 13,000.

**For propane models, minimum inlet gas pressure is 8.0 in. W.C. and maximum inlet gas pressure is 14.0 in. W.C.

† Cold climate represents 70°F temperature rise.

‡ Warm climate represents 50°F temperature rise.

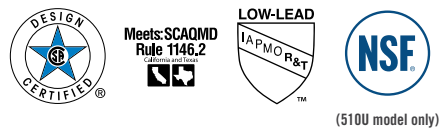
PROLINE® XE TANKLESS NON-CONDENSING ULTRA-LOW NOx

PROLINE® XE
BEST



Outdoor Model

Indoor Model



ANSI Z21.10.3

ULTRA-LOW NOx EMISSIONS

- Complies with SCAQMD Rule 1146.2 NOx emission requirements of 14 ng/J or 20 PPM.

FIELD CONVERTIBLE FROM NATURAL GAS TO PROPANE

MAXIMUM FLOW RATES UP TO 10.0 GPM

COPPER PRIMARY HEAT EXCHANGER

- Primary heat exchanger of the GTS-510U is constructed of a commercial-grade copper that is more resilient to erosion.
- Copper is 25x better at heat transfer than stainless steel thus stabilizing outgoing water temperatures quicker and reducing pressure drop across the heat exchanger.

INDOOR MODELS

- Include integrated temperature controls and advanced diagnostics to simplify troubleshooting.
- Include factory-installed power cords.

OUTDOOR MODELS

- Include a wall mount temperature remote controller and advanced diagnostics to simplify troubleshooting.

GTS-510U CAN BE USED IN BOTH RESIDENTIAL AND COMMERCIAL APPLICATIONS

- Easy-Link up to 4 units.
- Multi-Link up to 20 units.

SAFETY FEATURES

- Air-Fuel Ratio (AFR) Sensor.
- Exhaust and water temperature safety control.
- Overheat cut-off fuse.

INTERNAL FREEZE PROTECTION

POWER VENT OR POWER DIRECT VENT DESIGN

WARRANTY

- 15-year limited warranty on heat exchanger in residential applications.
- 6-year limited warranty on heat exchanger in commercial applications.
- 5-year limited warranty on all parts.
- For complete information, consult written warranty or go to statewaterheaters.com.

Model Number*	Type	Gas Consumption Input		Inlet Gas Pressure**		Energy Factor (EF)	Connections		Sizing Chart (Number of Showers)		Clearances (in.)				Approx Shipping Weight (lbs)
		Minimum (BTU/H)	Maximum (BTU/H)	Minimum (in. W.C.)	Maximum (in. W.C.)		Water	Gas	Cold Climate†	Warm Climate‡	Top	Bottom	Side	Front	
GTS-110U-I-200	Natural	15,000	140,000	4.0	10.5	0.82	3/4" NPT	3/4" NPT	1.5	2.5	12	12	3	4	43
GTS-310U-I-200	Natural	15,000	190,000	4.0	10.5	0.82	3/4" NPT	3/4" NPT	2.5	3.5	12	12	3	4	43
GTS-510U-I-200	Natural	15,000	199,000	4.0	10.5	0.82	3/4" NPT	3/4" NPT	2.5	3.5	12	12	3	4	45

*For outdoor models, change "I" to "E". Units are field convertible from natural gas to propane with supplied conversion kit.

**For propane, minimum inlet gas pressure is 8.0 in. W.C. and maximum inlet gas pressure is 14.0 in. W.C.

† Cold climate represents 70°F temperature rise.

‡ Warm climate represents 50°F temperature rise.



SPMD Series – Pre-Pressurized Diaphragm Tanks

2 THROUGH 119-GALLON CAPACITIES IN FREE-STANDING, IN-LINE OR HORIZONTAL DESIGNS

DURABLE BUTYL RUBBER PARABOLIC DIAPHRAGM

POWDER COATED LINING BONDED TO TANK SHELL, PROTECTS AGAINST RUST

ROTATING CORROSION-RESISTANT BASE ON FREE-STANDING MODELS ASSURES STABILITY

TANKS ARE CERTIFIED TO NSF/ANSI STANDARD 61-G AND 372 LISTED AND ARE IN COMPLIANCE WITH CALIFORNIA AND VERMONT'S NO-LEAD LEGISLATION

5-YEAR LIMITED WARRANTY

- For complete information, consult written warranty or go to statewaterheaters.com.



Certified to NSF/ANSI 61-G and 372

	Model Number	Volume (Gallons)	Dimensions in Inches			Weight (lbs)
			"A" Overall Height	"B" To Center of Water Inlet	"C" Diameter	
SPMD Series Free Standing Plastic Base	SPMD-14	14	24-3/4	2-1/4	15-3/8	25.5
	SPMD-20	20	32-3/4	2-1/4	15-3/8	30
	SPMD-31	31	45-1/2	2-1/4	15-3/8	40
	SPMD-36S	36	32-3/8	2-1/4	20	45
	SPMD-52	52	38-5/8	2-1/4	23-3/8	77
	SPMD-86	86	59	2-1/4	23-3/8	105
	SPMD-96	96	63-3/8	2-1/4	23-3/8	111
	SPMD-119	119.5	61-1/4	2-1/2	26	165
SPMDI Series In-Line	SPMDI-2	2	10-3/16	–	8-1/4	5
	SPMDI-5	4.6	14-3/4	–	11	9
	SPMDI-7	7.3	21-1/16	–	11	14
	SPMDI-14	14	23-1/2	–	15-3/8	25
SPMDH Series Horizontal				"B" Overall Length		
	SPMDH-7	7.3	12-7/8	21-1/8	11	16
	SPMDH-14	14	17-3/8	21-3/4	15-3/8	25.5
	SPMDH-20	20	17-3/8	27-1/8	15-3/8	30

1" Female connection on 14, 20, and 36S gallons.

1-1/4" Female connections on 52, 86, 96, and 119 gallons.

SPMDI connection 3/4" Male. *SPMDI-14 1" male

SPMDH-7 connection 3/4" Male. *SPMDH-14, SPMDH-20 connection 1" Male



SSB Series – Pre-Pressurized Diaphragm Tanks

2 THROUGH 119-GALLON CAPACITIES IN FREE-STANDING, IN-LINE OR HORIZONTAL DESIGNS

DURABLE BUTYL RUBBER PARABOLIC DIAPHRAGM

POWDER COATED LINING BONDED TO TANK SHELL, PROTECTS AGAINST RUST

TANKS ARE CERTIFIED TO NSF/ANSI STANDARD 61-G AND 372 LISTED AND ARE IN COMPLIANCE WITH CALIFORNIA AND VERMONT'S NO-LEAD LEGISLATION

RUST-GUARD™ NO-WELD STEEL BASE

5-YEAR LIMITED WARRANTY

- For complete information, consult written warranty or go to statewaterheaters.com.



	Model Number	Volume (Gallons)	Dimensions in Inches			Weight (lbs)
			"A" Overall Height	"B" To Center of Water Inlet	"C" Diameter	
SSB Series Free Standing Metal Base	SSB20	20	32-3/4	2-1/4	15-3/8	30
	SSB32	32	45-1/2	2-1/4	15-3/8	40
	SSB36	36	32-3/8	2-1/4	20	45
	SSB52	52	38-5/8	2-1/4	23-3/8	77
	SSB65	65	46-5/8	2-1/4	23-3/8	87
	SSB86	86	59	2-1/4	23-3/8	105
	SSB119	119.5	61-1/4	2-1/2	26	165

1" Female connection on 14, 20, and 36S gallons.

1-1/4" Female connections on 52, 86, 96, and 119 gallons.

SPMDI connection 3/4" Male. *SPMDI-14 1" male

SPMDH-7 connection 3/4" Male. *SPMDH-14, SPMDH-20 connection 1" Male

Galvanized Tanks Z Series

1-YEAR LIMITED WARRANTY

- Vertical Tanks
- Maximum working pressure 75 psig
- NSF Certified 61G & 372
- For complete information, consult written warranty or go to statewaterheaters.com.

VERTICAL TANKS Z SERIES 12 TO 120 GALLONS – FREE STANDING

Model Number	Volume (Gallons)	Dimensions in Inches		Weight (lbs)
		Height	Diameter	
Z-12	12	26-1/2	12	27
Z-21	21	26-7/8	16	45
Z-32	32	38-3/4	16	52
ZT-42	42	51	16	71
ZS-42	42	33-5/8	20	71
Z-82	82	63	20	114
Z-100	120	64-1/2	24	154



VERTICAL TANKS Z SERIES 220-480 GALLONS

Model Number	Volume (Gallons)	Dimensions in Inches		Weight (lbs)
		Height	Diameter	
Z-220	220	78	30	303
Z-315	315	79-1/2	36	416
Z-480	480	87	42	640

UNIVERSAL TANKS Z SERIES 525-900 GALLONS

Model Number	Volume (Gallons)	Dimensions in Inches		Weight (lbs)
		Height	Diameter	
ZU-525	525	131	36	685
ZU-900	900	161	42	1040

Heavy-Duty Glasslined G Series

5-YEAR LIMITED WARRANTY

- UL Certified.
- Max working pressure is 125 psig.
- Anodic Protection.
- For complete information, consult written warranty or go to statewaterheaters.com.

G SERIES GLASSLINED PUMP TANKS

Model Number	Volume (Gallons)	Dimensions in Inches		Weight (lbs)
		Height	Diameter	
G-42-T	42	49	16-1/2	71
G-42-S	42	35-7/8	20	81
G-82	82	62-1/4	20	154
G-120	120	63	24	206

1-1/4" NPT Spud in head for alternate motor mount or retention tank connection
All tapping 1-1/4" Water Connections
1/4" pressure switch tapping on all models



When used in potable applications

WATERGUARD™

POTABLE WATER HEATER EXPANSION TANKS

- For use with residential and commercial water heaters to a maximum of 180°.
- Field-adjustable 38 psi air charge.
- IAPMO approved (150 psig Models).
- Tanks are NSF Standard 61-G and 372 listed.
- 5-year limited tank warranty.

THERM-O-FLEX™

POTABLE WATER HEATER EXPANSION TANKS

- In-Line Series, Models ETC-7, ETC-14, 3/4" FPT.
- Free Standing Series Models ETC-15 to ETC-36, 1" FPT.
- ETC-52 to ETC-86, 1-1/4" FPT.
- Tanks are NSF Standard 61-G and 372 listed.
- 5-year limited warranty.

For complete information, consult written warranty or go to statewaterheaters.com.

Model Number	Maximum (PSIG) Working Pressure	Tank Volume (Gallons)	Maximum Accepted Volume (Gallons)			Connection NPT Size	Overall Height (Inches)	Diameter (Inches)	Weight (lbs)
			20 PSI	40 PSI	60 PSI				
Waterguard™-Series (Potable Expansion Tanks - 5-Year Limited Warranty)									
ETC-10X	150	9.25	7.80	6.55	5.25	3/4	15-1/2	15-3/8	18
Therm-o-Flex™ Series (Potable Expansion Tanks - 5-Year Limited Warranty)									
ETC-7	100	7.27	4.6	N/A	N/A	3/4	21-1/16	11	14
ETC-14	100	14.6	10.5	8.0	5.6	3/4	23-1/2	15-3/8	25
ETC-15	100	14.6	10.5	8.0	5.6	1	24-3/4	15-3/8	25-1/2
ETC-20	100	20	13.5	10.1	6.7	1	32-3/4	15-3/8	30
ETC-36S	100	36	21	16.6	11.4	1	32-3/8	20	45
ETC-52	100	52	33.8	25.5	19.7	1-1/4	38-5/8	23-3/8	77
ETC-86	100	86	61.2	45.4	32.8	1-1/4	59	23-3/8	105

Space Heating Expansion Tanks

FOR USE WITH RESIDENTIAL SPACE HEATING BOILERS IN CLOSED SYSTEMS

- Not for use with potable water heating systems.
- Designed for in-line or free standing installation.
- Combination models shipped with air vent and separator.
- Field-adjustable 12 psi air charge.
- Drawn-steel tank with butyl rubber parabolic diaphragm separates air and water.
- Maximum temperature 240° F.
- 100 psi maximum working pressure.
- 1-year tank limited warranty.
- For complete information, consult written warranty or go to statewaterheaters.com.



Model Number	Gallon Capacity	Max. Acceptable Volume (Gallons) 20 PSIG	Dimensions in Inches		Shipping Weight (lbs)
			Height	Diameter	
Therm-o-Flex In-Line					
ET-2	1.86	1.53	10-3/16	8-1/4	5
ET-5	4.83	3.75	14-3/4	11	9
ET-7	7.27	4.6	21-1/16	11	14
ET-14	14.6	10.5	21-3/4	15-3/8	22
Therm-o-Flex Combination Units*					
ET-2V-1	1.86	1.53	20-11/16	8-1/4	10
ET-2V-2	1.86	1.53	20-11/16	8-1/4	10
ET-5V-1	4.83	3.75	25-1/8	11	13
ET-5V-2	4.83	3.75	25-1/8	11	13
ET-7V-1	7.27	4.6	31-3/8	11	16
ET-7V-2	7.27	4.6	31-3/8	11	16

*Combination Units with Air Vent and Air Separator

All Models: 100 psig Maximum Working Pressure

All In-Line Models have 1/2" MPT connections

Combination Units Air Vent Connection Sizes: ET-2V-1, ET-5V-1, ET-7V-1 have 1" female connection

Combination Units Air Vent Connection Sizes: ET-2V-2, ET-5V-2, ET-7V-2 have 1-1/4" female connection

