



**MVB - up to 87% - Vent Category II/IV**

Tag: RAYH71503ANGBRZCN

Project: Stock MVB 03 Version

Quantity: 1

**1503A (1500 MBH Input)**

**Unit Information**

Model Series: **MVB - up to 87% - Vent Category II/IV**

Size: **1503A (1500 MBH Input)**

Fuel: **Natural Gas**

Location: **Outdoor**

Altitude: **0** ft

**Heating Performance**

Input Temp: **130** F

Output Temp: **160** F

Design Capacity: **0** MBTUH

Input Capacity: **1500** MBTUH

Output Capacity: **1260** MBTUH

Thermal Efficiency: **86.2** %

**Water Flow**

Design Flow: gpm

Max Flow: **66** gpm

Min Flow: **113** gpm

Pressure Drop: ft. wg

**General Unit Data**

Unit Weight: **840** lbs.

Unit Length: **26** in.

Unit Width: **30** in.

Unit Height: **67** in.



**MVB - up to 87% - Vent Category II/IV**



**Product Data: Type H Hydronic Boiler**

Qty	Description
1	Type H Hydronic Boiler

**Tag(s): RAYH71503ANGBRZCN**

**Selected Options**

- Application : Hydronic
- Location : Outdoor
- Size : 1503A (1500 MBH Input)
- Fuel Type : Natural Gas
- Water Quality / Pump Selection Criteria : Not Applicable
- Pump Type : None
- Pump Material : None
- Header Material : Bronze
- Heat Exchanger : A-3 Cupronickel Heat Exchanger
- Pressure Relief Valve : A-15 125 PSIG (Standard for Water Heater)
- Ignition Module : 3-Try Standard Ignition - Auto Reset
- Alarm : None
- Low Water Cut Off : F-10 Low Water Cut Off (Manual Reset)
- Codes : G-12 California Code
- High Limit - Manual Reset : Fixed Manual Reset Limit - Standard
- High Limit - Auto Reset : I-1 Adjustable Auto Reset Limit - 240 F
- Safety Valves : None
- Vent Valve : None
- Low Gas Pressure Switch : None
- High Gas Pressure Switch : None
- Low Water Pressure Switch : None
- Configured Pumps : None
- Cold Water Start System : None
- CWR Pumps : None
- Injector Pump : None
- Flanges : None
- Elevation : Below 2000 ft (0 – 1999 ft)

**Selected Accessories**

**MVB H 3A Standard Features**

Qty: 4 Tags: RAYH71003ANGBRZCN, RAYH71503ANGBRZCN, RAYH71753ANGBRZCN, RAYH72003ANGBRZCN

---

**Standard Features**

**Heat Exchanger**

- ASME H Stamped 160 PSIG MAWP
- National Board Approved
- ASME Powder-Coated Tube Sheet
- Silicone High Temp O-Rings
- Temperature and Pressure Gauge (shipped loose for field installation by others)
- Four-pass primary heat exchanger
- Stainless steel evaporator plate

**Control**

- 120V, 60Hz, 1Ø, Power Supply
- 120/24V 60Hz Transformer
- VERSA IC® built-in controller
- 7" color HD touchscreen display
- Raymote™ Wi-Fi remote connectivity
- Cascade up to 4 heaters
- Remote flame sensor
- High limit, manual reset, fixed 240°F
- Freeze Protection
- On/Off Power Switch
- Flow Switch
- Blocked Vent Pressure Switch
- Pump Outputs
  - Boiler pump
  - DHW Indirect – Pilot Duty
  - System – Pilot Duty
- Programmable Pump Time Delays
- Water Temperature Sensors (7)

**Construction**

- Indoor/outdoor construction
- Front controls enclosed
- PolyTuf powder coat finish
- Rear Connections (water, gas, vent, electrical, combustion air)
- Combustion air filter - Inline
- Design certified ANSI Z21.13/CSA 4.9
- Full Safety Diagnostics with History
- Limited Twenty-Five Year Thermal Shock Warranty
- Limited Ten-Year Heat Exchanger Warranty

**Burner**

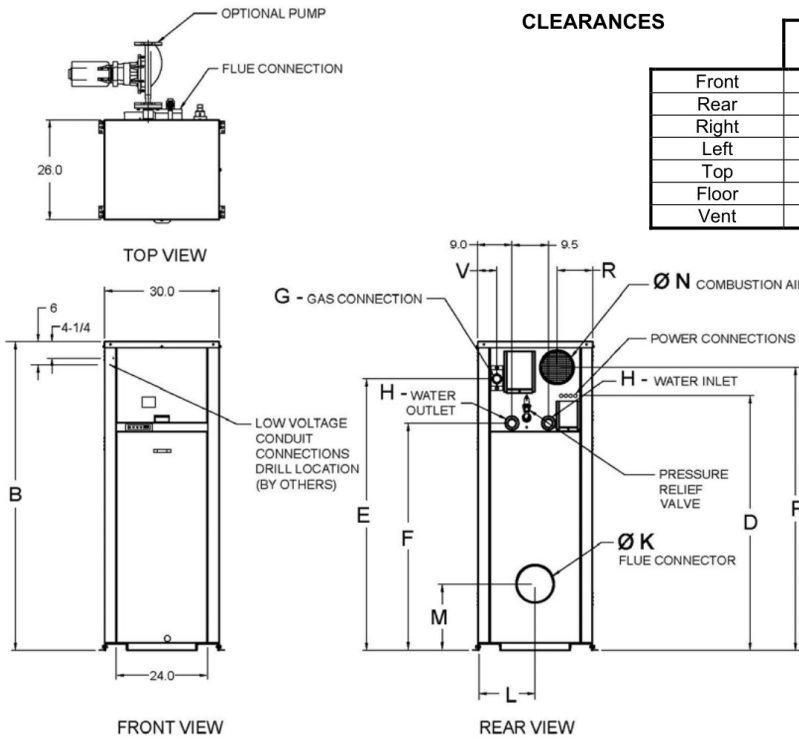
- Hot Surface Ignition (HSI)
- Radially Fired Knitted Burner

**Gas Train**

- Dual-Seat Combination Valve
- Manual Shut Off Valve

MVB H Dimensions 1503A

Qty: 1 Tags: RAYH71503ANGBRZCN



CLEARANCES

	Certified Minimum	Recomm. Service
Front	24"	24"
Rear	12"	24"
Right	1'	1"
Left	1"	1"
Top	0"	10"
Floor	0"	0"
Vent	1"	1"

Model (H7-)	MBTUH		Dimensions (in.)												
	Input	Output	B Height	D	E	F	G* NPT	H NPT	K Flue Ø	L	M	N C/A Ø	P	R	V
1503A	1500	1293	67	54-3/4	58-3/4	47-1/2	1-1/4	2-1/2	8	13-3/4	17-1/4	8	60-1/2	8-1/4	1-3/4

- \* For natural gas. For propane, 1" NPT for all sizes.
- Ratings shown are for elevations up to 4,500 feet. For installations at elevations above 4,500 feet, please consult the factory for additional instructions.
- For direct vent applications, please contact the factory about relocating the pump.

Model (H7-)	PUMP HP (Amps*)		
	Water Hardness		
	Soft	Medium	Hard
1503A	3/4 - 11	1 - 14	1 - 14

\*Current Draw is for Pump Only

Model (H7-)	Shipping Weight (Lbs.)	Footprint (Ft <sup>2</sup> )	Amps*
1503A	840	5.4	12

\*Current draw is for heater only.  
(Supply breaker must have delayed trip.)

RATES OF FLOW AND PRESSURE DROPS

Model (H7-)	20°F ΔT		30°F ΔT		39°F ΔT*		Maximum Flow			Minimum Flow*		
	GPM	ΔP (ft.)	GPM	ΔP (ft.)	GPM	ΔP (ft.)	GPM	ΔP (ft.)	ΔT (°F)	GPM	ΔP (ft.)	ΔT (°F)
1503A	N/A	N/A	86	16.0	66	9.5	113	25.5	23	66	9.5	39

\* Closed systems only