



Delta Limited
1259B (1260 MBH Input - 3 Stage Fire)

Tag: RAYWH81259BNGBRZCNP8

Project: P8 Delta Stock

Quantity: 1

Unit Information

Model Series: **Delta Limited**
 Size: **1259B (1260 MBH Input - 3 Stage Fire)**
 Fuel:
 Location: **Outdoor**
 Altitude: **0** ft



Heating Performance

Input Temp: **55** F
 Output Temp: **140** F
 Design Capacity: **0** MBTUH
 Input Capacity: **1260** MBTUH
 Output Capacity: **1047** MBTUH
 Thermal Efficiency: **83.1** %

Water Flow

Design Flow: gpm
 Max Flow: **55** gpm
 Min Flow: **132** gpm
 Pressure Drop: ft. wg

General Unit Data

Unit Weight: **1010** lbs.
 Unit Length: **32** in.
 Unit Width: **68** in.
 Unit Height: **41** in.

Delta Limited



Product Data: Type WH Water Heater

Qty

1

Description

Type WH Water Heater

Tag(s): RAYWH81259BNGBRZCNP8

Selected Options

- Application : Domestic Water Heater
- Location : Outdoor
- Model Size / Input : 1259B (1260 MBH Input - 3 Stage Fire)
- Fuel Type : Natural Gas
- Efficiency : 83.1 %
- Water Quality / Pump Selection Criteria : Hard (16 to 25 GPG) / P8 (P11 non-ferrous)
- Pump Type : Mounted Pumps
- Pump Material : Bronze \ Stainless Steel
- Header Material : Bronze
- Heat Exchanger Material : A-3 Cupronickel Heat Exchanger
- Pressure Relief Valves : A-15 125 PSIG (Standard for Water Heater)
- Ignition Module : Standard 3-Try Ignition - Auto Reset
- Low Water Cut Off : None
- Codes : G-12 California
- 4 inch Supply Gas Pressure Configuration (G-20) : None
- High Limit - Manual Reset : None
- High Limit - Combination : I-12 Adjustable Auto Limit / Adjustable Manual Limit - 200/200 F
- Low Gas Pressure Switch : S-1 Low Gas Pressure Safety Switch - Manual Reset
- High Gas Pressure Switch : None
- Low Water Pressure Switch : None
- Surerack - Unit Stacking Kit : None
- Mounting Location : Front-Mounted
- Mounted Pumps : P-8 Bronze Mounted Pump (Hard 16 to 25 GPG)
- Cold Water Start Systems : None
- Cold Water Run Pumps : None
- Injector Pump : None
- Flanges : None
- Control / Valve : None
- Controller (Not Included, See Accessories Section) : None
- Elevation : Below 2000 ft (0 – 1999 ft)

Selected Accessories

Delta Limited WH Large Standard Features

Qty: 5 Tags: RAYWH3989BNGBRZCNP8, RAYWH81259BNGBRZCNP8, RAYWH91529BNGBRZCNP8, RAYWH91799BNGBRZCNP8, RAYWH91999BNGBRZCNP8

Standard Features

Heat Exchanger

- HLW Stamp
- ASME Inspected and Stamped
160 PSIG Working Pressure
- National Board Approved
- ASME Steel Tube Sheet
- Silicone High Temp O-Rings
- Temperature and Pressure Gauge

Control

- 120V, 60Hz, 1 Phase Power Supply
- 120/24V 60 Hz transformer
- 100% Shut-Off/Lockout
- Hot Surface Ignition
- Remote flame sensor
- High limit control, manual reset
- On/Off Power Switch
- Manual shut-off, front-mounted switch
- Flow Switch
- Blocked Vent Pressure Switch
- Combustion Air Proving Switch
- Pump Time Delay Relay
- Status Display Lights

Burner

- Ultra-Low NOx: Less than 20 PPM

Gas Train

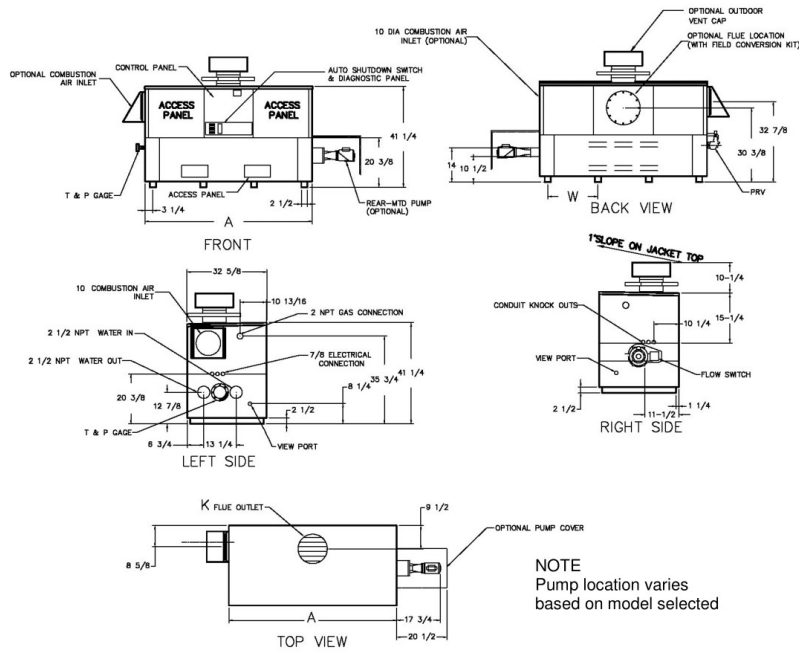
- Manual Gas Shut-off Valve(s)
- Combination Valves
- Low Gas Pressure Switch, Manual
- Design Certified – ANSI Z21.10.3/CSA 4.3

Construction

- Indoor/outdoor construction
- Enclosed front controls
- AB-1953 Verified
- CSA Low Lead Certified ≤.25%
- 100% Factory Fire Tested
- Thermal Shock Proof Heat Exchanger
- Limited Twenty-Year Thermal Shock Warranty
- Limited Ten-Year Cupro-Nickel Heat Exchanger Warranty
- Limited Five-Year Copper Heat Exchanger Warranty
- PolyTuf Powder Coated Cabinet
- Combustible Floor Shield Required
- Fan-Assisted
- Patented Burner Security Blanket
- Proudly Assembled in the USA

Delta Limited WH Dimensions 1259B

Qty: 1 Tags: RAYWH81259BNGBRZCNP8



SPECIFICATIONS										
Model	MBTUH			Firing Stages	A Width	K	T	W	Amp. Draw*	Approx. Shipping Wt. (Lbs.)
	Input	Output 85%	Output 83.1%							
1259B	1260	1071	1047	4	68-1/2	12	10	20-9/16	<12	1010

- Rates shown are for natural or propane gas and elevations up to 4,500 feet. For installations above 4,500 feet, please contact manufacturer.
- Recommended natural gas supply pressure is 7.0 – 10.5 in. WC. Recommended propane gas supply pressure is 11.0 – 13.0 in. WC.
- Amp draw is heater only less pump

Model	83.1% System Flow and Head Loss															
	3-4 Grains Per Gallon					5-15 Grains Per Gallon					16-25** Grains Per Gallon					
	ΔT (°F)	GPM	ΔP (FT WC)	MTS (IN)	SHL (FT WC)	ΔT (°F)	GPM	ΔP (FT WC)	MTS (IN)	SHL (FT WC)	ΔT (°F)	GPM	ΔP (FT WC)	MTS (IN)	SHL (FT WC)	
1259B	28	75	4.8	2 1/2	8.5	18	115	11.3	2 1/2	19.4	16	132	14.8	2 1/2	25.3	

Model	85% System Flow and Head Loss															
	3-4 Grains Per Gallon					5-15 Grains Per Gallon					16-25** Grains Per Gallon					
	ΔT (°F)	GPM	ΔP (FT WC)	MTS (IN)	SHL (FT WC)	ΔT (°F)	GPM	ΔP (FT WC)	MTS (IN)	SHL (FT WC)	ΔT (°F)	GPM	ΔP (FT WC)	MTS (IN)	SHL (FT WC)	
1259B	28	76	4.8	2 1/2	8.5	19	115	11.3	2 1/2	19.4	16	132	14.8	2 1/2	25.3	

SHL includes 50 ft of tubing each way (100 total)
 ** Must use optional cupro-nickel tubes. For hardness exceeding 25 GPG, must use water softener
 Basis for minimum flow is 55 GPM or 30°F ΔT, 132 GPM for maximum flow

Model	83.1% RECOVERY RATES (GPH)									
	Temperature Rise (°F)									
	20°	30°	40°	50°	60°	70°	80°	90°	100°	
1259B	6346	4231	3173	2538	2115	1813	1586	1410	1269	

Model	85% RECOVERY RATES (GPH)									
	Temperature Rise (°F)									
	20°	30°	40°	50°	60°	70°	80°	90°	100°	
1259B	6491	4327	3245	2596	2164	1855	1623	1442	1298	