

SharkBite™

Poly Coupling

SharkBite™ expansion fittings are designed for use with PEX-a tubing and must be used in conjunction with SharkBite expansion rings. SharkBite expansion fittings have a 25-year system warranty when used with SharkBite PEX-a tubing.

Approved Applications

Residential and commercial potable water, recirculation, reclaimed water systems, hydronic heating/cooling (up to 100% glycol concentration) and direct burial.

Specification Data

Materials

| | |
|------|------|
| Body | PPSU |
|------|------|

Performance

Max Working Pressure

| | | |
|---------|----|--------|
| 80 psi | at | 200°F |
| 100 psi | at | 180°F |
| 160 psi | at | 73.4°F |

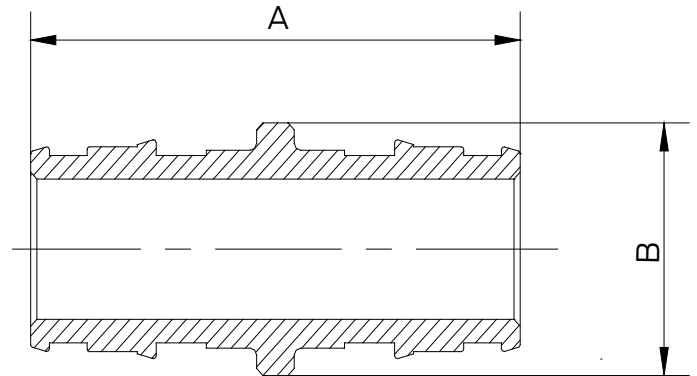
Minimum Length of Pipe Connecting Two Fittings

| Fittings/Pipe Size | Min. Length | Insertion Depth |
|--------------------|-------------|-----------------|
| 1/2 in. | 4 in. | 0.72 in. |
| 3/4 in. | 5-1/2 in. | 0.97 in. |
| 1 in. | 7 in. | 1.19 in. |

Certifications & Listings

ASTM F1960, ASTM F877, CSA B137.5, NSF/ANSI 14, NSF/ANSI/CAN 61, NSF/ANSI/CAN 372, ASTM E84, CAN/ULC S102.2, ASTM E119, CAN/ULC S101

For listing information, please contact Customer Service.



Dimensions (inches)

| Part # | Size | A | B |
|--------|------|------|------|
| UA008 | 1/2" | 1.56 | 0.85 |
| UA016 | 3/4" | 2.04 | 1.25 |
| UA020 | 1" | 2.51 | 1.42 |

Product Submittal

| | |
|------|--|
| Name | |
|------|--|

| | |
|------|--|
| Date | |
|------|--|

| | |
|-----------------|--|
| Architect/Owner | |
|-----------------|--|

| | |
|------------|--|
| Contractor | |
|------------|--|

| | |
|-----|--|
| Tag | |
|-----|--|

| | |
|-------|--|
| Notes | |
|-------|--|