



RESIDENTIAL PRODUCT CATALOG



SOLID. STATE.

When it comes to building durability into a product, nobody does it like State. In fact, we've tested our water heaters in some of the most hostile environments and under the toughest conditions to make sure they last longer and provide many more years of hot water.

StateWaterHeaters.com



Table of Contents

About State Water Heaters	4
State Selection	5
State Water Heaters Product Comparison Guide.....	6
Residential Water Heater Selection Guide	7
What Goes Into Making State Brand Products Last	8
Guiding You Through the NAECA III Transition	9
Why Professionals Choose State.....	10

RESIDENTIAL GAS

Premier® High Efficiency Power Vent	11
Premier® High Efficiency Power Direct Vent.....	12
High Efficiency Non-Condensing Power Vent	13
High Efficiency Non-Condensing Power Direct Vent.....	14
Select® Direct Vent.....	15
Premier® High Efficiency	16
High Efficiency Non-Condensing Flue Damper	17
Select® Atmospheric Vent.....	18
Select® High Recovery Atmospheric Vent 75 & 100 Gallon	19
Select® Mobile Home Atmospheric Vent.....	20
Select® Mobile Home Direct Vent.....	21
Select® Ultra-Low NOx.....	22
High Efficiency Non-Condensing Ultra-Low NOx Power Vent.....	23
Select® Ultra-Low NOx Direct Vent.....	24
Select® Ultra-Low NOx High Recovery.....	25

RESIDENTIAL TANKLESS

Tankless Condensing High Efficiency	26
Tankless Condensing High Efficiency	27
Tankless Non-Condensing	28
Tankless Non-Condensing Ultra-Low NOx.....	29

RESIDENTIAL ELECTRIC

Premier® Hybrid Electric Heat Pump Water Heater - 10-Year Warranty.....	30
Premier® Hybrid Electric Heat Pump Water Heater, 80 Gallon	31
Premier® Hybrid Electric Heat Pump Water Heater - 6-Year Warranty.....	32
Premier® Self-Cleaning	33
Select®	34
Mobile Home.....	35
Select® Specialty.....	36

RESIDENTIAL WATER SYSTEMS

Pump Mate™	37
Storage Tanks.....	38
Potable Water Heater Expansion Tanks.....	39
Therm-o-Flex™	40

About State Water Heaters

State Water Heaters, a brand of State Industries, Inc., is a leading manufacturer of commercial and residential water heaters. State offers 500 water heater products, and has consistently developed new technologies to ensure longer product life.



Based in Ashland City, Tennessee, State has seven water heater manufacturing plants. Hundreds of distribution centers across the United States ensure efficient service to State's national customer base of residential homeowners, wholesalers, contractors, and other members of the engineering community. All State products are backed by solid customer technical support and durable tank and parts warranty.

History

In 1946, State Water Heaters was founded by Herbert Lindahl, Sr. as a small entrepreneurial company producing coal and wood-burning stoves in a garage in Nashville, Tennessee. In the years that followed, State expanded and became a leader in the water heating industry, through steadfast commitments to seeking new materials, new technology and innovative engineering techniques. Landmark moments in State's proud history include:

- 1948** State produces its first electric water heater.
- 1954** State expands product lines and manufactures first gas-fired water heaters.
- 1956** State manufactures its first welded-steel galvanized tanks.
- 1957** State produces its first porcelain glass-lined tanks; the basic design feature is still in use today.
- 1979** State is granted US patents for their Sandblaster® commercial water heater design.
- 1996** State is the world's largest water heater manufacturer with over 2900 employees and average daily production of over 10,000 units. The company introduces a complete new product line that includes the Premier® and Select® models.



State Selection

With over 500 water heater products, State offers customized solutions for all residential and commercial hot water and storage needs. The main categories below outline State's product offerings; for more detailed information, visit www.statewaterheaters.com.

The scope of our product line today is a perfect example. Never before have so many residential and commercial water heaters, storage tanks, and related products carried the State brand. We have introduced over 300 new products, including a dramatic expansion of the State commercial offering and have added the ever-growing tankless models to our product line.

Residential Electric – State Premier® Electric, State Select® Electric, and State Scout® Electric lines offer homeowners customized electric choices for their water heating needs.

Residential Gas – State Premier® Gas, State Select® Gas, and Tankless options provide high-efficiency, gas solutions for residential applications.

Pump Tanks – State offers five pump tank models, designed to properly collect, store, and dose wastewater.

Expansion Tanks – Waterguard™ and Thermo-Flex™ products eliminate damage to water heater connections and provide added system protection.

Tankless Water Heaters – Tankless gas water heaters heat water as it is used, providing residents with an energy-efficient, space-saving option.



Visit www.StateWaterHeaters.com for complete information.

CODES AND STANDARDS



Complies with the Federal Energy Conservation Standards effective April 16, 2015, in accordance with the Energy Policy and Conservation Act (EPCA), as amended.



Patented eco-friendly burner design reduces NOx emissions by up to 33% and complies with Low NOx emission requirements of less than 40 ng/J.



CSA® - Low Lead Content. This mark shown on a plumbing product signifies certification to California's legislative AB 1953 and Vermont's legislative Act 193 that limits the lead content in plumbing fixtures that come in contact with drinking water to a maximum of 0.25% lead.



All State residential water heaters are UL listed according to safety specifications outlined in Underwriters Laboratories, Inc. Standards for Safety (UL 174).

STATE WATER HEATERS

PREMIUM FEATURES. NAECA III READY.



**SELECT®
GOOD**



**PREMIER®
BETTER**



**PREMIER® PLATINUM
BEST**

OPERATING COST

\$\$\$

\$\$

\$

INSTALLATION SPACE REQUIRED



HOT WATER OUTPUT



PREMIUM FEATURES:

Blue Diamond® Glass Coating**	●	●	●
DynaClean™ Automatic Sediment-Cleaning System**	●	●	●
Self-Powered Electronic Gas Valve*	●	●	●
Heat Trap Nipples**	●	●	●
Enhanced Flow Brass Drain Valve**	●	●	●
CoreGard™ Advanced Anode Rod Protection**	●	●	●
Energy Saving	Meets NAECA minimums	●	●
Electronic User Interface		◐	●
Condensing Combustion*		◐	●
Continuous Flow*		◐	●
Cutting Edge Technology			●
Industry Leading Efficiency			●

*These features apply to gas products only
**These features apply to tank-type products only

Hot Water Output, Cost of Operation, & Installation Space Required estimated based on typical applications/installations. For a more custom analysis of unique installations, visit www.statewaterheaters.com and use our product selector tool.



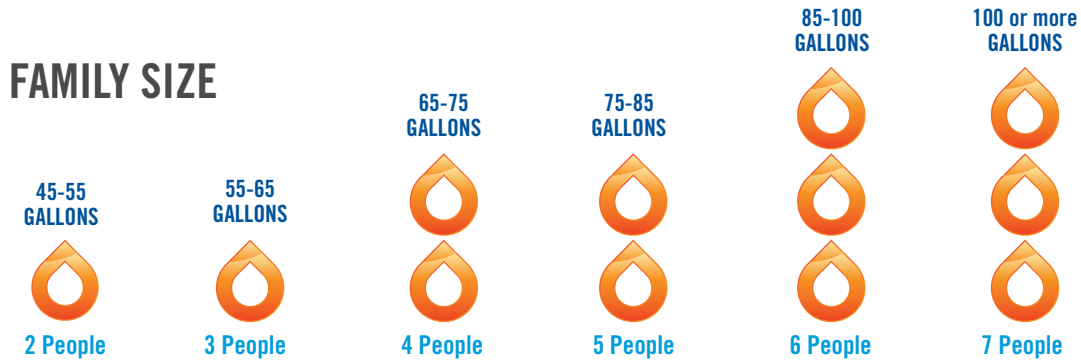
RESIDENTIAL WATER HEATER SELECTION GUIDE

RESIDENTIAL TANK-TYPE WATER HEATER MODELS

Determine whether your family is low demand or high demand. You should consider your family to be high demand if...

- More than 2 full baths in home
- Teenagers living in home
- Over-sized whirlpool bath or large tub

Locate your family size and determine the first hour rating requirement for your family. If you decide your family is high demand, consider moving up to the next first hour rating level.



Consult the heater options on the following pages for a State residential water heater with a first hour rating that meets your requirements.

TANKLESS WATER HEATER MODELS

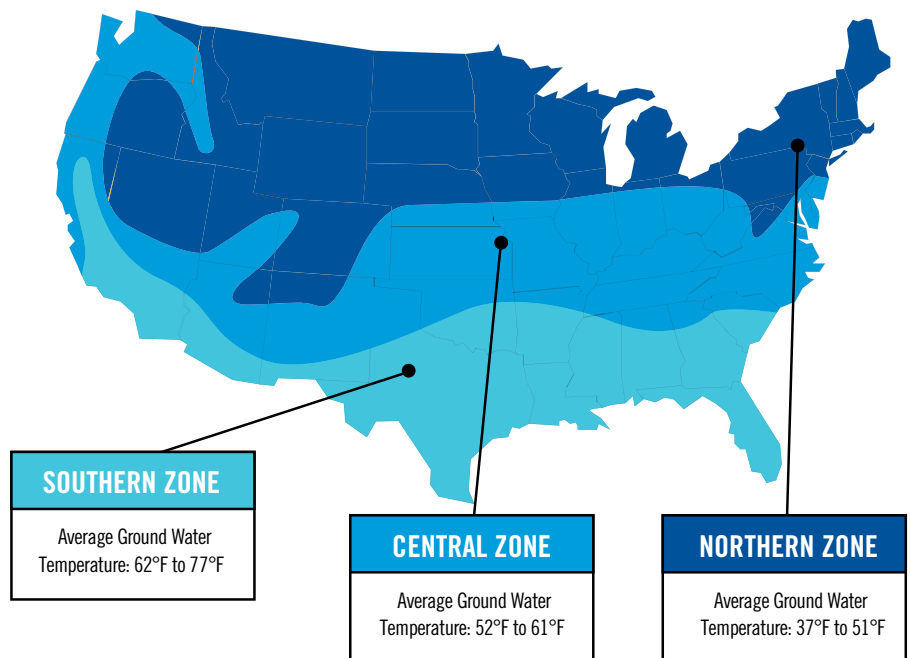
Ground Water Temperature Factor

The temperature of incoming ground water (cold water inlet temperature) varies greatly throughout the U. S. and also fluctuates with the changing of the seasons. The temperature of the water as it enters the water heater will determine the amount of “temperature rise” required to achieve the desired hot water outlet temperature (120°F is recommended).

The best way to measure your incoming ground water temperature is to use a thermometer to measure cold water temperature during the coldest season of the year. To simplify the process, use this map to determine whether your installation location is in the Southern Zone, Central Zone, or Northern Zone.

Peak Hot Water Demand

The next step is to determine how much hot water will be required during the busiest usage period (“peak demand”). Consider all appliances and fixtures that use hot water, including lavatory faucets, kitchen faucets, washing machines, dishwashers, showers and bathtubs. Be sure to determine how many appliances and fixtures will be used at the same time (“peak demand”).



WHAT GOES INTO MAKING STATE BRAND PRODUCTS LAST



Blue Diamond® Glass Coating
State Residential gas and electric water heaters have the toughest protection against corrosion to maximize tank life.

State's Blue Diamond® Glass coating provides superior corrosion resistance compared to the industry-standard glass lining.



Self-Cleaning Systems on State Residential Models

Automatic self-cleaning action greatly reduces lime and sediment buildup, maximizes hot water output. Made from long-lasting Pex cross-linked polymer.

Our Premier® models come standard with maximum sediment-fighting power and utilize our top-of-the-line Turbo Coil design.



Heat Trap Nipples
Factory-installed for faster installation on most State Residential models.



CoreGuard™ Anode Rod
Our anode rods have a stainless steel core that extends the life of the anode rod allowing superior tank protection far longer than standard anode rods.



Enhanced-Flow Brass Drain Valve
Our residential water heaters have a solid brass, tamper resistant, enhanced-flow, ball type drain valve.

- Uses a standard female hose fitting that allows for fast and easy draining during maintenance.
- Designed for easy operation, this valve includes an integral screwdriver slot that features a 1/4 turn (open/close) radius, which not only permits full straight-through water flow but also a quick and positive shut off.



ENERGY STAR®
State Water heaters offers a variety of models that are ENERGY STAR® qualified. Learn more at www.energystar.gov.



Green Choice® Gas Burner
Patented eco-friendly burner design reduces NOx emissions by up to 33% and complies with Low-NOx emission requirements of less than 40 ng/J.



LOW LEAD CONTENT
CSA low lead logo on a plumbing product signifies certification to California's AB1953 and Vermont's legislation Act 193 that limits the lead content in plumbing fixtures that come in contact with drinking water to a maximum of 0.25% lead.

GUIDING YOU THROUGH THE NAECA III TRANSITION



The U.S. Department of Energy (DOE) regulates minimum energy efficiency requirements for **all brands** of water heaters. A new update to the rules for increasing minimum energy efficiency **is in effect** as of April 16, 2015.

AT STATE, WE'VE PREPARED OUR LINE OF RESIDENTIAL WATER HEATERS TO MEET THE STANDARDS. BUT AS SOMEONE IN THE BUILDING COMMUNITY, YOU NEED TO UNDERSTAND HOW THESE CHANGES IMPACT YOU AS WELL.

These design changes require that most residential water heaters under 55 gallons of capacity produced after April 16, 2015 be larger in size. Therefore, they will require more installation space in both single-family and multi-family housing. Most water heaters under 55 gallons are 2" larger in height and diameter. Units over 55 gallons will require even more significant technology changes.

WATER HEATER REPLACEMENT ISSUES? WE HAVE SOLUTIONS.

GAS



LESS THAN 55 GALLON

WILL THE NEW LARGER DESIGN FIT? IF NOT, YOU HAVE TWO OPTIONS.

- OPTION 1:** Use a smaller heater to match the current footprint of your existing heater. You might consider adding a mixing valve on the water heater to increase delivery capacity.
- OPTION 2:** Upgrade to a smaller more efficient tankless unit.

MORE THAN 55 GALLON

THE TECHNOLOGY FOR UNITS OVER 55 GALLONS HAS CHANGED.

- OPTION 1:** Upgrade to one of State's High Efficiency options such as tankless or Premier® High Efficiency Gas.
- OPTION 2:** Replace your obsolete model with 2 smaller gas heaters.
(Example: two 40-gallon gas units in the place of one 75-gallon gas unit).

ELECTRIC



LESS THAN 55 GALLON

WILL THE NEW LARGER DESIGN FIT? IF NOT, SEE BELOW.

- OPTION 1:** Use a smaller heater to match the current footprint of your existing heater. You might consider adding a mixing valve on the water heater to increase delivery capacity.

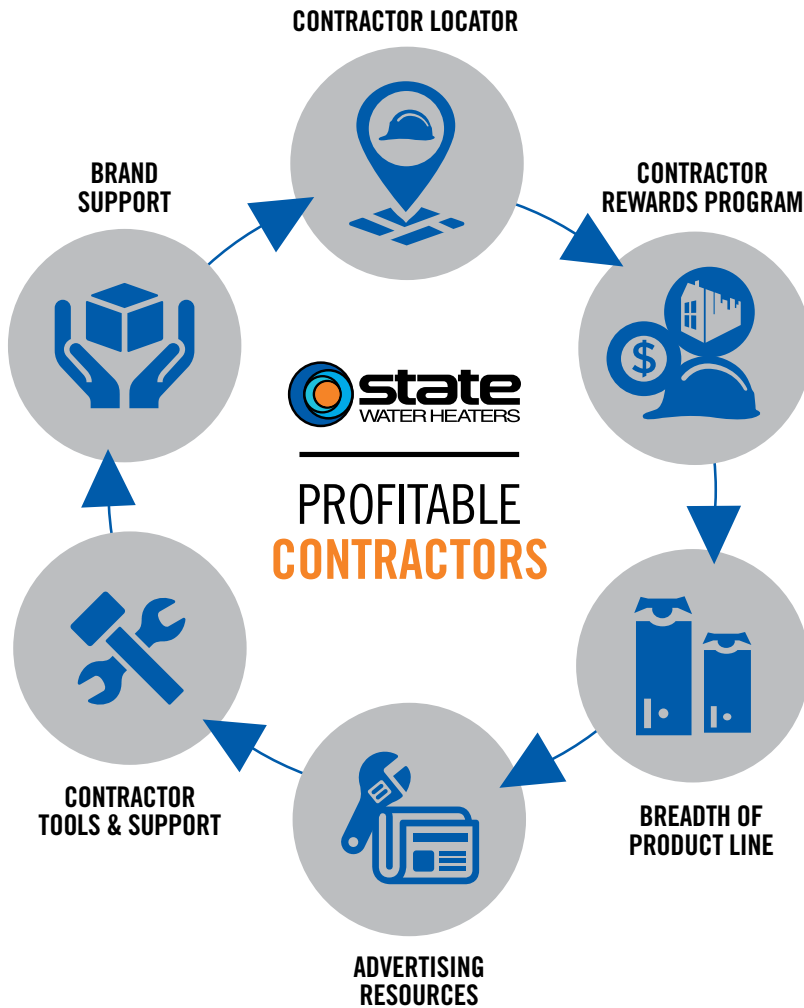
MORE THAN 55 GALLON

THE TECHNOLOGY FOR UNITS OVER 55 GALLONS HAS CHANGED.

- OPTION 1:** Upgrade to one of State's Premier® Hybrid Electric Heat Pump water heaters which is 2.5 times more efficient as a standard electric.
- OPTION 2:** Replace your obsolete model with 2 smaller electric heaters
(Example: Two 40-gallon electrics in the place of one 80-gallon electric).

TO LEARN MORE, VISIT WWW.STATEWATERHEATERS.COM/NAECA

WHY PROFESSIONALS CHOOSE STATE



To learn more visit:
www.statewaterheaters.com/contractorlocator

Earn points by purchasing State Water Heaters.

It's free and easy to participate.
 Enroll online at contractorrewards.com.

Eligible products will have a yellow reward code label worth valuable points. Two ways to enter the codes:

1. Download the smartphone app and scan the code
2. Enter the code at contractorrewards.com

With over 1,000,000 merchandise items, your reward choices are endless.

State provides **6 KEY THINGS** to help grow your business and become more profitable.

1. CONTRACTOR LOCATOR

A new online locator that drives thousands of consumers from our websites right to our loyal contractors.

2. CONTRACTOR ADVERTISING TOOLS

Our Dealer Marketing Resource Center allows contractors to develop an easy, affordable and custom advertising campaign to promote their business.

3. BREADTH OF PRODUCT LINE

Residential or Commercial, we have the most complete line from Standard models... to the most innovative high efficiency water heaters available.

4. PRODUCT SALES TOOLS

We provide contractors access to the sales tools needed to close more sales.

5. CONTRACTOR REWARDS™ PROGRAM

Our program rewards our loyal contractors for buying our products. Buy more & get rewarded with prizes and higher status on our contractor locator.

6. BRAND SUPPORT

Marketing investment in our brands drive consumers to recognize our name, visit our websites, locate local contractors and request our products.

*To be listed on the Contractor Locator you must meet the minimum threshold of codes entered at: ContractorRewards.com

To learn more about these 6 key things please visit
www.statewaterheaters.com/contractor



**CONTRACTOR
REWARDS.COM**
 Your Business. Your Choices. Your Rewards.

PREMIER® HIGH EFFICIENCY POWER VENT

RESIDENTIAL GAS

POWER VENT DESIGN FOR INSTALLATION VERSATILITY

- Modular blower, with 120 volt, 60Hz electrical system (5 amps or less), 6-foot cord with standard 3-prong connector.
- Combined horizontal and vertical vent runs terminating through outside wall, using Schedule 40 PVC pipe as follows:
 - 2" pipe allows vent runs up to 25 equivalent feet.
 - 3" pipe allows vent runs up to 65 equivalent feet.
 - 4" pipe allows vent runs up to 128 equivalent feet.

SIDE-MOUNTED TAPS FOR RECIRCULATING SYSTEMS

- Hot and cold “side taps” allow Premier Power Vent to be used for “combination” systems for water heating plus space heating, radiant floor heating or other applications requiring a recirculating hot water loop.

INTELLI-VENT™* GAS CONTROL WITH SILICON NITRIDE HOT SURFACE IGNITOR

- Premium-grade hot surface ignitor eliminates standing pilot.
- Electronic circuitry provides superior system diagnostic capabilities plus extremely precise temperature control.

BLUE DIAMOND® GLASS COATING WITH TWO HEAVY DUTY ANODE RODS

- Provides superior corrosion resistance compared to the industry-standard glass lining.

GREEN CHOICE® GAS BURNER

- Patented eco-friendly burner design reduces NOx emissions by up to 33% and complies with Low-NOx emission requirements of less than 40 ng/J.

SELF-CLEANING DIP TUBE

CSA CERTIFIED AND ASME RATED T&P RELIEF VALVE

MAXIMUM HYDROSTATIC WORKING PRESSURE: 150 PSI

CODE COMPLIANCE

- Meets UBC, CEC and ICC National Codes.
- Meets the thermal efficiency and standby loss requirements of the U.S. Department of Energy and Current edition of ASHRAE/IESNA 90.1.

6-YEAR LIMITED TANK AND PARTS WARRANTY

- For complete information, consult written warranty or go to statewaterheaters.com.

*Intelli-Vent™ is a registered trademark of Emerson Electric Company



Model Number	Gallon Capacity	Recovery @ 90°F Rise Gallon Per Hour	BTU Input Per Hour	First Hour Delivery Gallons	Dimensions in Inches			Approx. Shipping Weight (lbs)
					Height to Top of Heater	Height to Top of Blower Outlet	Diameter	
GP6 50 YTVIT	50	92	76,000	127	68-5/8	71	21	210

Available in natural gas only.
 Standard model certified for sea level to 5,300 ft. elevation.
 Optional Condensate Neutralizer Kit available (part number 9007959005).

PREMIER® HIGH EFFICIENCY POWER DIRECT VENT

**PREMIER® PLATINUM
BEST**



RESIDENTIAL GAS

HELICAL INTERNAL HEAT EXCHANGER

- Spiral heat exchanger keeps hot combustion gases in the tank longer to lengthen the heat transfer cycle.
- Operates at 96% thermal efficiency, which saves money on operating costs compared to a standard 80% efficient gas water heater.

POWER DIRECT VENT DESIGN

- Combined vertical and horizontal runs terminating through an outside wall. Vents using PVC, CPVC or ABS pipe.
 - 2" pipe, vents up to 45 equivalent feet.
 - 3" pipe, vents up to 128 equivalent feet.

CONDENSING DESIGN

- 96% efficient condensing design.
- Equipped with condensate drain tee.

SIDE-MOUNTED HOT AND COLD RECIRCULATING TAPS

- Allows the Premier to be installed as part of combination space heating/ water heating applications.

ADVANCED ELECTRONIC CONTROL

- Large LCD Display.
- Precise temperature control.
- Advanced diagnostics.
- iCOMM™ compatible and can be monitored from remote locations.
- Call 1.888.WATER02 for more information.

CODE COMPLIANCE

- Complies with SCAQMD Rule 1146.2 and other air quality management districts with similar requirements for Ultra-Low NOx emissions requirements of 14 ng/J or 20ppm.
- Meets UBC, CEC and ICC National Codes.
- Meets the thermal efficiency and standby loss requirements of the U.S. Department of Energy and current edition of ASHRAE/IESNA 90.1.

6-YEAR LIMITED TANK AND PARTS WARRANTY

- For complete information, consult written warranty or go to statewaterheaters.com.

Model Number	Gallon Capacity	Recovery @ 90°F Rise Gallon Per Hour	BTU Input Per Hour	Vent Size	Dimensions	Height to Top of Heater	Height to T&P	Diameter	Approx. Shipping Weight (lbs)
GP6 50 YTPDT	50	129	100,000	2 or 3	Inches	66-3/4	49-1/4	22	255
GP6 75 YTPDT	75	129	100,000	2 or 3	Inches	65-1/4	45-5/8	27-3/4	382

Available in propane (LP) gas. Change "Y" to "H" in the model number (example: GP6 50 HTPDT).

Models certified from sea level to 10,100 ft. elevation.

Optional Condensate Neutralizer Kit available (part number 9007959005).

HIGH EFFICIENCY NON-CONDENSING POWER VENT



RESIDENTIAL GAS

VERSATILE POWER VENT DESIGN

- All models feature an exclusive 3-position rotatable blower outlet which adds flexibility.
- Combined horizontal and vertical vent runs up to 180 equivalent feet with 4" diameter venting (ABS, PVC, CPVC and polypropylene).
- All models are equipped with a protected sensor that detects the presence of flammable vapors and automatically disables the burner to prevent ignition.
- Air intake snorkel elevates the inlet location of combustion air to prevent flammable vapors from entering the sealed combustion chamber.

ENERGY STAR® QUALIFIED

- All models except (GS6 75 YRVHTL) meet the ENERGY STAR(R) EF requirement and may also qualify for local utility and rebate programs.
- Built-in heat traps on the water inlet and outlet reduce the amount of heat lost through piping
- 2-inch, thick, "Environmentally-Friendly" foam insulation reduces the amount of heat loss and contributes to overall energy efficiency

HOT-SURFACE IGNITOR

- More robust and reliable than standing pilot, and reduces energy consumption.

USER-FRIENDLY

- State-of-the-art electronic gas control provides more precise temperature control.
- LED control light displays operation status and diagnostics information.

ENHANCED-FLOW BRASS DRAIN VALVE

AVAILABLE IN NATURAL GAS AND PROPANE

6-YEAR LIMITED TANK AND PARTS WARRANTY

- For complete information, consult written warranty or go to statewaterheaters.com



Model Number	Gallon Capacity	Energy Factor (EF)	Recovery @ 90°F Rise Gallon Per Hour	BTU Input Gallon Per Hour	First Hour Rating	Height to Top of Blower	Height to Top of Tank	Diameter	Approx. Shipping Weight (lbs)
GS6 40 YBVIS	40	0.70	44.7	40,000	73	59	49-5/8	22	174
GS6 40 YRVIT	40	0.70	55.9	50,000	90	68-1/2	59-1/4	20	176
GS6 50 YBVIS	50	0.70	44.7	40,000	90	60-1/8	50-3/4	24	198
GS6 50 YRVIT	50	0.70	55.9	50,000	96	68-1/8	58-3/4	22	192
GS6 50 YRVHSL	50	0.70	69.3	62,000	110	61-1/8	52	24	212
†GS6 75 YRVHTL	75	N/A	80.4	76,000	N/A	70-5/8	61-1/4	26	277

All models have 3/4" NPT water connections.

Side connections standard on YRVHSL and YRVHTL models.

Side connections available on YRVIT models. Add "L" to the model number (example GS6 40 YRVITL).

All models rated for installation at altitudes up to 10,100 ft.

Natural gas models cited are 200/210. Propane models are series 201/211. When ordering propane gas, change "Y" to "H" in the model number (example GS6 40 HBVIS).

† GS6 75 YRVHTL is not ENERGY STAR® Qualified.



HIGH EFFICIENCY NON-CONDENSING POWER DIRECT VENT

RESIDENTIAL GAS



POWER DIRECT VENT DESIGN

- Combined horizontal and vertical vent runs up to 180 equivalent feet with 4" diameter venting (ABS, PVC, CPVC and polypropylene).
- Two-pipe sealed combustion system uses outside air, eliminating problems caused by insufficient indoor ventilation.
- Reduced NOx emissions comply with air quality management district regulations.

ENERGY STAR® QUALIFIED

- All models except GS6 75 YRPDTL meet the ENERGY STAR® EF requirement and may also qualify for local utility and rebate programs.
- Built-in heat traps on the water inlet and outlet reduce the amount of heat lost through piping.
- 2-inch thick, "Environmentally-Friendly" foam insulation reduces the amount of heat loss and contributes to overall energy efficiency.

HOT-SURFACE IGNITOR

- More robust and reliable than standing pilot, and reduces energy consumption.

SELF-CLEANING DIP TUBE

USER-FRIENDLY

- State-of-the-art electronic gas control provides more precise temperature control.
- LED control light displays operation status and diagnostics information.
- Built-in heat traps on the water inlet and outlet reduce the amount of heat lost through piping.

ENHANCED-FLOW BRASS DRAIN VALVE

CSA CERTIFIED AND ASME RATED T&P RELIEF VALVE

DESIGN-LISTED BY CSA INTERNATIONAL

- Certified at 150 PSI working pressure.
- Certified to ANSI Z21. Z21.10.1-CSA 4.1 or ANSI Z21.10.3-CSA 4.3 standards governing storage tank-type water heaters.

6-YEAR LIMITED TANK AND PARTS WARRANTY

- For complete information, consult written warranty or go to statewaterheaters.com.

Model Number	Series	Gallon Capacity	NG Input Per Hour Propane	Energy Factor	First Hour Rating Gallon	Recovery @ 90°F Rise Gallon Per Hour	Height to Top of Blower	Height to Top of Tank	Diameter	Approx. Shipping Weight (lbs)
GS6 40 YBPDS	200	40	40,000	0.71	71	45.2	58-1/4	49-5/8	22	174
GS6 50 YBPD	200	50	45,000	0.70	93	50.3	67-1/2	58-3/4	22	192
GS6 50 YRPDTL 5	200	50	62,000*	0.71	115	72.6	69	60-1/4	22	200
† GS6 75 YRPDTL	210	75	76,000	N/A	N/A	82.4	70-5/8	60-1/2	26	277

* Propane model has input of 58,000 BTU/hr.

When ordering propane (LP), change "Y" to "H" in the model number (example GS6 40 YBPDSL).

For side connect models, add "L" to the model number (example: GPDX 50L).

Side connections available on YBPDS and YBPD models.

Natural gas models cited are series 200/210. Propane models are series 201/211.

Side connections are standard on YRPDTL models.

All models rated for installation at altitudes up to 10,100 ft.

† GS6 75 YRPDTL 5 is not ENERGY STAR® qualified.



SELECT® DIRECT VENT



RESIDENTIAL GAS

DIRECT VENT DESIGN

- One-pipe, dual-channel closed system draws all make-up air from outside the home, eliminating problems caused by insufficient indoor ventilation and is FVIR compliant.
- Horizontal air intake and venting on all models up to 80 inches from outside wall with no electrical power needed.

INTELLIGENT CONTROL LOGIC

GREEN CHOICE® GAS BURNER

- Patented eco-friendly gas burner design reduces NOx emissions by up to 33% and complies with Low-NOx emission requirements of less than 40 ng/J.

SELF-CLEANING DIP TUBE

COREGARD™ ANODE ROD

PUSH BUTTON PIEZO IGNITOR

HEAT TRAP NIPPLES

CODE COMPLIANCE

- Meets UBC, CEC and HUD National Codes.
- Meets the thermal efficiency and standby loss requirements of the U.S. Department of Energy and current edition of ASHRAE/IESNA 90.1.
- Complies with the Federal Energy Conservation Standards effective April 16, 2015, in accordance with the Energy Policy and Conservation Act (EPCA), as amended.

DESIGN-CERTIFIED BY CSA INTERNATIONAL

- Certified at 300 PSI test pressure and 150 PSI working pressure. Listed according to ANZI Z21. 10.1-CSA 4.1 standards governing storage tank-type gas water heaters.

6-YEAR LIMITED TANK AND PARTS WARRANTY

- For complete information, consult written warranty or go to statewaterheaters.com.



Model Number	Gallon Capacity	First Hour Rating Gallon	Energy Factor	Input BTU Per Hour	Recovery 90°F Rise Gallon Per Hour	Height to Top of Draft Hood	Height to Top of Tank	Diameter	Vent Outlet	Approx. Shipping Weight (lbs)
GS6 40 YBDS	40	72	0.63	38,000	41	64	49-3/4	22	Co-Axial	178
GS6 50 YBDS	50	91	0.62	40,000	43	73	59	22	Co-Axial	200
GS6 50 YRDS	50	92	0.61	47,000	51	74	60	22	Co-Axial	215

Dual-channel system has 3" vent pipe inside 6" air intake pipe, for the 40 and 50-gallon models.

All models have 2" foam cavity.

Water connection is 3/4" male on all models.

40 and 50 gallon models are 8" on center.

* Allow 29-1/2" front to back dimensions for air intake at rear of heater.

All models are available in propane (LP) gas (series 301).

All models are certified from sea level to 7,700 ft. elevation.

All models are available with side connections. Add "L" to the model number (example: GS6 40 YBDS L).



PRESSURIZED COMBUSTION SYSTEM

INSTALLATION FRIENDLY

- Allows for easy replacement of standard atmospheric vent heater.
- Easily connects to existing B-vent.

FAN-ASSISTED, CATEGORY 1 APPLIANCE

- Plugs into standard 110/120V outlet (10 foot power cord included).

24V ELECTRONIC CONTROLS

ELECTRONIC IGNITION

LCD USER INTERFACE

- Easy-to-read eye level display.
- Simple temperature settings and adjustments.
- Service diagnostics are in plain text.

POWERED ANODE ROD

ENHANCED-FLOW BRASS DRAIN VALVE

SELF-CLEANING DIP TUBE

GREEN CHOICE® GAS BURNER

- Patented eco-friendly gas burner design reduces NOx emissions by up to 33% and complies with Low-NOx emission requirements of less than 40 ng/J.

CODE COMPLIANCE

- Meets UBC, CEC and HUD National Codes.
- Meets the thermal efficiency and standby loss requirements of the U. S. Department of Energy and current edition of ASHRAE/IESNA 90.1.
- Complies with the Federal Energy Conservation Standards effective April 16, 2015, in accordance with the Energy Policy and Conservation Act (EPCA), as amended.

DESIGN-CERTIFIED BY CSA INTERNATIONAL

- Certified at 300 PSI test pressure and 150 PSI working pressure. Listed according to ANSI Z21.10.1- CSA 4.1 standards governing storage tank-type gas water heaters.

6-YEAR LIMITED TANK AND PARTS WARRANTY

- For complete information, consult written warranty or go to statewaterheaters.com.

Model Number	Gallon Capacity	First Hour Rating Gallons	Energy Factor (EF)	BTU Input Gallon Per Hour	Recovery @ 90°F Rise Gallon Per Hour	Foam Thickness	Height to Top of Draft Hood	Height to Top of Tank	Diameter	Draft Hood	Approx. Shipping Weight (lbs)
GP6 40 YPCT	40	70	0.70	40,000	43	2	61-3/4	58	20	3 or 4	157
GP6 50 YPCT	50	81	0.70	40,000	43	2	60-5/8	57-1/8	22	3 or 4	171

Available in natural gas only.

Water connection is 3/4" on all models.

All models are certified from sea level to 10,100 ft. elevation.

Requires 120 VAC power supply.

HIGH EFFICIENCY NON-CONDENSING FLUE DAMPER



RESIDENTIAL GAS

AUTOMATIC FLUE DAMPER

- Increases efficiency as it automatically opens and closes to reduce heat loss in the standby mode.

ELECTRONIC GAS CONTROL

DIAGNOSTICS

ELECTRONIC IGNITION

SELF-CLEANING DIP TUBE

GREEN CHOICE® GAS BURNER

- Patented eco-friendly burner design reduces NOx emissions by up to 33% and complies with Low-NOx emission requirements of less than 40 ng/J.

COREGARD™ ANODE ROD

ENHANCED-FLOW BRASS DRAIN VALVE

BLUE DIAMOND® GLASS COATING

CSA CERTIFIED AND ASME RATED T&P RELIEF VALVE

CODE COMPLIANCE

- Meets UBC, CEC and HUD National Codes.
- Meets the thermal efficiency and standby loss requirements of the U.S. Department of Energy and current edition of ASHRAE/IESNA 90.1.
- Complies with the Federal Energy Conservation Standards effective April 16, 2015, in accordance with the Energy Policy and Conservation Act, (EPCA), as amended.

DESIGN-CERTIFIED BY CSA INTERNATIONAL

- Certified at 300 PSI test pressure and 150 PSI working pressure. Listed according to ANSI Z21.10.1 - CSA 4.1 standards governing storage tank-type water heaters.

6-YEAR LIMITED TANK AND PARTS WARRANTY

- For complete information, consult written warranty or go to statewaterheaters.com.



Model Number	Gallon Capacity	First Hour Rating Gallons	Energy Factor (EF)	Recovery @ 90°F Rise Gallon Per Hour	BTU Input Gallon Per Hour Natural*	Foam Thickness	Height to Top of Draft Hood	Height to Top of Tank	Diameter	Draft Hood Outlet	Approx. Shipping Weight (lbs)
Tall Models											
GS6 40 YBFT	40	67	0.67	42	40,000	2	64-1/4	58-1/4	20	3 or 4	152
GS6 50 YBFT	50	81	0.67	42	40,000	2	63-1/2	57-1/4	22	3 or 4	167
Short Models											
GS6 40 YBFS	40	67	0.67	42	40,000	2	54	47-3/4	22	3 or 4	149
*GS6 50 YBFS	50	88	0.67	42	40,000	2	55-3/4	49-1/2	24	3 or 4	175

Requires 120 VAC power supply.

Water connection is 3/4" on all models.

When ordering top-mounted T&P valve, add "G" to the model number (example: GS6 40 YBFT G).

All models are certified from sea level to 10,100 ft. elevation.

* GS6 50 YBFS available in natural gas only. All other models available in propane (LP) gas.

SELECT® ATMOSPHERIC VENT



RESIDENTIAL GAS

INTELLIGENT CONTROL LOGIC

- *Not available on 60,000 BTU input models (GS6 50 XCT and GS6 55 XCT).

SELF CLEANING DIP TUBE

COREGARD™ ANODE ROD

PUSH-BUTTON PIEZO IGNITOR

ENHANCED-FLOW BRASS DRAIN VALVE

HEAT TRAP NIPPLES

BLUE DIAMOND® GLASS COATING

CODE COMPLIANCE

- Meets UBC, CEC and HUD National Codes.
- Meets the thermal efficiency and standby loss requirements of the U. S. Department of Energy and current edition of ASHRAE/IESNA 90.1.
- Complies with the Federal Energy Conservation Standards effective April 16, 2015, in accordance with the Energy Policy and Conservation Act, (EPCA), as amended.

DESIGN-CERTIFIED BY CSA INTERNATIONAL

- Certified at 300 PSI test pressure and 150 PSI working pressure. Listed according to ANSI Z21.10.1-CSA 4.1 standards governing storage tank-type water heaters.

6-YEAR LIMITED TANK AND PARTS WARRANTY

- For complete information, consult written warranty or go to statewaterheaters.com.

Model Number	Gallon Capacity	First Hour Rating Gallon	Energy Factor	BTU Input Natural Gas	BTU Input Propane Gas	Recovery 90°F Rise Gallon Per Hour	Height to Top of Draft Hood	Height to Top of Tank	Diameter	Draft Hood	Approx. Shipping Weight (lbs)
Tall Models											
†GS6 30 ORBT	30	64	0.63	35,500	32,000	36	61-3/4	58	16	3 or 4	123
GS6 30 OCT	30	67	0.63	35,500	32,000	36	61-3/4	58	18	3 or 4	132
‡GS6 40 OCT	40	67	0.62	35,500	N/A	36	62	58-1/4	20	3 or 4	138
†GS6 40 BRBT	40	70	0.62	40,000	36,000	41	62	58-1/4	18	3 or 4	130
GS6 40 BCT*	40	70	0.62	40,000	36,000	41	62	58-1/4	20	3 or 4	138
GS6 50 BRT*	50	88	0.60	40,000	37,000	41	60-3/4	57-1/4	21	3 or 4	148
GS6 50 BCT*	50	88	0.62	40,000	37,000	41	60-3/4	57-1/4	22	3 or 4	165
GS6 50 RCT*	50	92	0.60	50,000	45,000	58	60-3/4	57-1/4	22	4	165
†GS6 50 XCT*	50	98	0.60	60,000	54,000	61	65-1/2	61	22	4	190
Short Models											
†GS6 30 ORBS	30	56	0.63	35,500	32,000	36	50	46-1/4	18	3 or 4	110
GS6 30 OCS	30	62	0.63	35,500	32,000	36	50	46-1/4	20	3 or 4	118
†GS6 40 BRBS	40	67	0.62	40,000	36,000	41	51-1/2	47-3/4	20	3 or 4	134
GS6 40 BCS	40	68	0.62	40,000	36,000	41	51-1/2	47-3/4	22	3 or 4	135
GS6 50 BCS	50	93	0.60	40,000	40,000	41	53	49-1/4	24	3 or 4	177

Water connection is 3/4" on all models.

*Optional side-mounted recirculating taps, add "L" to the suffix in the model number (GS6 40 RCTL).

† Models ship with supplied insulation blanket.

For 10-year tank and 6-year parts limited warranty, change "6" to "X" in the model number (example: GSX 30 OCT).

All models approved for installation from sea level to 10,100 ft. elevation.

‡ LP models not available on GS6 40 OCT.



SELECT® HIGH RECOVERY ATMOSPHERIC VENT 75 & 100 GALLON



RESIDENTIAL GAS

HIGHEST RECOVERIES

- Capacity/input combinations up to 98 gallons/75,100 BTUs produce recoveries up to 81 gallons per hour.

FULLY AUTOMATIC CONTROLS WITH SAFETY SHUTOFF

- Requires no electric connections.
- Fixed automatic gas shutoff device for added safety.

GREEN CHOICE® GAS BURNER

- Patented eco-friendly burner design reduces NOx emissions up to 33% and complies with Low-NOx emission requirements of 40 ng/J.

SELF-CLEANING DIP TUBE

COREGARD™ ANODE ROD

PUSH-BUTTON PIEZO IGNITOR

BLUE DIAMOND® GLASS COATING

ENHANCED-FLOW BRASS DRAIN VALVE

CODE COMPLIANCE

- Meets UBC, CEC and ICC National Codes.
- Meets the thermal efficiency and standby loss requirements of the U.S. Department of Energy and current edition of ASHRAE/IESNA 90.1.

CSA CERTIFIED AND ASME RATED T&P RELIEF VALVE

MAXIMUM HYDROSTATIC WORKING PRESSURE 150 PSI

DESIGN-LISTED BY UNDERWRITERS LABORATORIES

- Certified at 300 PSI test pressure and 150 PSI working pressure.
- Listed according to ANSI Z21. 10.3 CSA 4.3 standards governing storage tank-type water heaters.

6-YEAR LIMITED TANK AND PARTS WARRANTY

- For complete information, consult written warranty or go to statewaterheaters.com.



Model Number	Gallon Capacity	BTU Input Natural Gas	Recovery @ 90°F Rise Gallon Per Hour	Height to Top of Draft Hood	Height to Top of Tank	Diameter	Draft Hood	Approx. Shipping Weight (lbs)
GS6 75 XRRS	74	75,100	81	61	57	26-1/2	4	275
GS6 100 XRRT	98	75,100	81	68-1/2	62	27-3/4	4	350

Water connections are 1" male NPT on GS6 75 XRRS and 1-1/4" on GS6 100 XRRT.
 For 10- year tank and 6-year parts limited warranty, change "6" to "X" in the model number (example: GSX 75 XRRS).
 For optional side-mounted recirculating taps, add "L" to suffix (example: GS6 75 XRRS L).
 When ordering propane (LP) gas change "X" to "C" in the model number (example: GS6 75 CRRS).
 All models are certified from sea level to 7,700 ft. elevation.

SELECT® MOBILE HOME ATMOSPHERIC VENT



RESIDENTIAL GAS

COMPLIES WITH HUD STANDARDS FOR MANUFACTURED HOUSING INSTALLATION GAS CONTROL CONVERTIBLE FOR NATURAL AND PROPANE GAS

- For flexibility to meet the varying needs of manufactured housing installations.

SIDE-MOUNTED 3/4" COLD WATER INLET

- For ease of installation when cold water supply originates below the structure.
- Top mounted 3/4" hot water outlet.

GREEN CHOICE® GAS BURNER

- Patented eco-friendly burner design reduces NOx emissions by up to 33% and complies with Low-NOx emission requirements of less than 40 ng/J.

COREGARD™ ANODE ROD

- Our anode rods have a stainless steel core that extends the life of the anode rod allowing superior tank protection far longer than standard anode rods.

BLUE DIAMOND® GLASS COATING

ENHANCED-FLOW BRASS DRAIN VALVE

CODE COMPLIANCE

- Meets UBC, CEC and HUD National Codes.
- Meets the thermal efficiency and standby loss requirements of the U.S. Department of Energy and current edition of ASHRAE/IESNA 90.1.
- Complies with the Federal Energy Conservation Standards effective April 16, 2015, in accordance with the Energy Policy and Conservation Act (EPCA), as amended.

CSA CERTIFIED AND ASME RATED T&P RELIEF VALVE

6-YEAR LIMITED TANK AND 2-YEAR PARTS LIMITED WARRANTY

- For complete information, consult written warranty or go to statewaterheaters.com.



Model Number	Gallon Capacity	First Hour Rating Gallon	Energy Factor	BTU Input Per Hour Natural Gas	BTU Input Per Hour Propane Gas	Recovery @ 90°F Rise Gallon Per Hour	Insulation	Height to Top of Draft Hood	Height to Top of Tank	Diameter	Draft Hood Outlet	Approx. Shipping Weight (lbs)
GS6 30 MHG	30	55	0.63	35,500	32,000	36	2	61-1/2	58	18	3 or 4	129
GS6 40 MHG	40	62	0.62	35,500	32,000	36	2	61-3/4	58-1/4	20	3 or 4	153

All models ship from the factory for use with natural gas. A complete propane (LP) burner is supplied for converting to propane gas.

All models are certified from sea level to 10,100 ft. elevation.

No option available for top T&P.



SELECT® MOBILE HOME DIRECT VENT



RESIDENTIAL GAS

COMPLIES WITH HUD STANDARDS FOR MANUFACTURED HOUSING INSTALLATION

GAS CONTROL CONVERTIBLE FOR NATURAL AND PROPANE GAS

- For flexibility to meet the varying needs of manufactured housing installations.

DIRECT VENT MODELS PACKAGE WITH BOTTOM INTAKE AIR VENT

- To draw all combustion make-up air from outside the structure.

OPTIONAL DUCTED AIR INLET KIT FOR DIRECT VENT MODELS

- For use when water heater is installed over a basement.
- Provision for horizontal air inlet ducting.

SIDE-MOUNTED 3/4" COLD WATER INLET

GREEN CHOICE® GAS BURNER

- Patented eco-friendly burner design reduces NOx emissions up to 33% and complies with Low-NOx emission requirements of 40 ng/J.

SELF-CLEANING DIP TUBE

COREGARD™ ANODE ROD

ENHANCED-FLOW BRASS DRAIN VALVE

BLUE DIAMOND® GLASS COATING

CODE COMPLIANCE

- Meets UBC, CEC and HUD National Codes.
- Meets the thermal efficiency and standby loss requirements of the U.S. Department of Energy and current edition of ASHRAE/IESNA 90.1.
- Complies with the Federal Energy Conservation Standards effective April 16, 2015, in accordance with the Energy Policy and Conservation Act (EPCA), as amended.

DESIGN-CERTIFIED BY CSA INTERNATIONAL

- Certified at 300 PSI test pressure and 150 PSI working pressure. Listed according to ANSI Z21.10.1-CSA 4.1 standards governing storage tank-type gas water heaters.

CSA CERTIFIED AND ASME RATED T&P RELIEF VALVE

6-YEAR LIMITED TANK AND 2-YEAR PARTS LIMITED WARRANTY

- For complete information, consult written warranty or go to statewaterheaters.com.



Model Number	Gallon Capacity	First Hour Rating Gallon	Energy Factor	Btu Input Per Hour Natural Gas	Btu Input Per Hour Propane	Recovery @ 90°F Rise Gallon Per Hour	Insulation	Height to Top of Draft Hood	Height to Top of Tank	Diameter	Vent Outlet	Approx. Shipping Weight (lbs)
GS6 30 MDV	30	49	0.63	30,000	29,000	31	2	61	58	18	3	129
GS6 40 MDV	40	61	0.62	32,000	29,000	33	2	61-3/4	58-3/4	20	3	153
GS6 50 MDV	50	77	0.60	40,000	37,000	39	2	60	57	22	3	168

All models ship from the factory for use with natural gas. A complete propane burner is supplied for converting to propane gas.

No option available for top T&P.

Water connection is 3/4" on all models.

All models certified from sea level to 5,400 ft. elevation.



INTELLIGENT CONTROL LOGIC

HIGH ENERGY FACTORS

- Eco-friendly non-CFC foam insulation, external heat traps and specially designed combustion chamber combine to produce a high Energy Factor for maximum savings on operating costs.

GREEN CHOICE® GAS BURNER

- Enhanced Ultra-low NOx burner complies with SCAQMD Rule 1121 and other air quality management districts with similar requirements for NOx emissions of less than 10 ng/J.

SELF-CLEANING DIP TUBE

COREGARD™ ANODE ROD

PUSH-BUTTON PIEZO IGNITOR

HEAT TRAP NIPPLES

BLUE DIAMOND® GLASS COATING

ENHANCED-FLOW BRASS DRAIN VALVE

CODE COMPLIANCE

- Meets UBC, CEC and HUD National Codes.
- Meets the thermal efficiency and standby loss requirements of the U.S. Department of Energy and current edition of ASHRAE/IESNA 90.1.
- Complies with the Federal Energy Conservation Standards effective April 16, 2015, in accordance with the Energy Policy Conservation Act (EPCA), as amended.

6-YEAR LIMITED TANK AND PARTS WARRANTY

- For complete information, consult written warranty or go to statewaterheaters.com



Model Number	Gallon Capacity	First Hour Rating Gallon	Energy Factor	BTU Input Natural Gas	Recovery @ 90°F Rise Gallon Per Hour	Height to Top of Draft Hood	Height to Top of Tank	Diameter	Draft Hood	Approx. Shipping Weight (lbs)
Tall Models										
GS6 30 ORUT	30	55	0.63	33,000	34	61-3/4	58	16	3 or 4	126
GS6 40 BRUT	40	71	0.62	40,000	41	62	58-1/4	18	3 or 4	125
GS6 40 BCUT	40	71	0.63	40,000	41	62	58-1/4	20	3 or 4	125
GS6 50 BRUT	50	91	0.60	40,000	42	60-3/4	57-1/4	20	3 or 4	148
GS6 50 BCUT	50	91	0.62	40,000	42	60-3/4	57-1/4	22	3 or 4	148
GS6 50 RCUT*	50	98	0.60	50,000	51	61	57-1/2	22	4	177
Short Models										
GS6 40 BCUS	40	69	0.62	40,000	41	51-1/2	47-3/4	22	3 or 4	138

All models may be ordered from the factory with top T&P valve as an option by adding "G" to the suffix of the model number (example GS6 30 ORUTG).

*Side loop connections are standard on model GS6 50 RCUT.

Most models approved for installation from sea level to 7,700 ft. elevation (except GS6 50 RCUT which is approved to 5,400 ft.).

HIGH EFFICIENCY NON-CONDENSING ULTRA-LOW NO_x POWER VENT



RESIDENTIAL GAS

POWER VENTING MADE SIMPLE

- Thru-the-wall or thru-the-roof power venting using either 2" or 3" PVC, ABS or CPVC vent pipe.

INTELLI-VENT™ GAS CONTROL

- Advanced electronics for more precise control of water temperature and easy to understand system diagnostics.

COMBINATION THERMOSTAT/ECO

- Utilizes an intermittent ignition gas valve (no standing pilot) with thermistor temperature sensor and built-in high temperature cut off.

QUIET AND EFFICIENT BLOWER

- Factory-installed 6-foot power cord with 3-prong male connector provided. Electrical requirements; 110/120 VAC power source, less than 5 amp draw.

SELF-CLEANING DIP TUBE

- Reduces lime and sediment buildup and maximizes hot water output. Made from long-lasting PEX cross-linked polymer.

COREGARD™ ANODE ROD

DURABLE, ULTRA-LOW NO_x BURNER CONSTRUCTION

ENHANCED-FLOW BRASS DRAIN VALVE

CODE COMPLIANCE

- Meets UBC, CEC and HUD National Codes.
- Meets the thermal efficiency and standby loss requirements of the U. S. Department of Energy and current edition of ASHRAE/IESNA 90.1.
- Complies with the Federal Energy Conservation Standards effective April 16, 2015, in accordance with the Energy Policy Conservation Act (EPCA), as amended.

6-YEAR LIMITED TANK AND PARTS WARRANTY

- For complete information, consult written warranty or go to statewaterheaters.com.



Model Number	Gallon Capacity	First Hour Rating Gallon Per Hour	Energy Factor	Recovery @ 90°F Rise Gallon Per Hour	BTU Input Gallon Per Hour	Height to Top of Blower	Height to Top of Tank	Diameter	Draft Hood	Approx. Shipping Weight (lbs)
GS6 40 UBVIT	40	69	0.68	42.6	42,000	20	66-7/8	58-5/8	2 or 3	170
GS6 50 UBVIT	50	81	0.68	42.6	42,000	22	66-8/8	57-7/16	2 or 3	207

No option available for top T&P valve.

SELECT® ULTRA-LOW NO_x DIRECT VENT



RESIDENTIAL GAS



FLAMMABLE VAPOR RESISTANT/ DIRECT VENT SEALED COMBUSTION SYSTEM

DURABLE, ULTRA-LOW NO_x BURNER CONSTRUCTION

NON-CFC FOAM INSULATION

- The tank is surrounded by a thick coat of non-CFC polyurethane foam to trap heat inside the tank, saving energy.

¾" TOP WATER CONNECTIONS AND SIDE SPACE HEATING CONNECTIONS

½" GAS CONNECTION

COREGARD™ ANODE ROD

BLUE DIAMOND® GLASS COATING

ENHANCED-FLOW BRASS DRAIN VALVE

GREEN CHOICE® GAS BURNER

- Complies with SCAQMD Rule 1121 and other air quality management districts with similar requirements for NO_x emissions of less than 10 ng/J.

CODE COMPLIANCE

- Meets UBC, CEC and HUD National Codes.
- Meets the thermal efficiency and standby loss requirements of the U.S. Department of Energy and current edition of ASHRAE/IESNA 90.1.
- Complies with the Federal Energy Conservation Standards effective April 16, 2015, in accordance with the Energy Policy and Conservation Act (EPCA), as amended.

CSA CERTIFIED AND ASME RATED T&P RELIEF VALVE

6-YEAR LIMITED TANK AND PARTS WARRANTY

- For complete information, consult written warranty or go to statewaterheaters.com.



Model Number	Gallon Capacity	First Hour Rating Gallon	Energy Factor	Recovery 90°F Rise Gallon Per Hour	BTU Input Per Hour	Concentric Vent Connection	Height to Top of Draft Hood	Height to Top of Tank	Diameter	Approx. Shipping Weight (lbs)
GS6 40 UBDS L	40	59	0.62	39	36,000	3 and 5	65-1/4	50-1/2	22	179
GS6 50 UBDT L	50	81	0.62	41	38,000	3 and 5	73-1/2	58-1/2	22	193

No option available for top T&P valve.
 All models have ¾" top water connections and comes standard with side loop sittings.
 All models are certified from sea level to 7,700 ft. elevation.



SELECT® ULTRA-LOW NOX HIGH RECOVERY

FULLY AUTOMATIC CONTROLS WITH SAFETY SHUTOFF

HEAVY GAUGE STEEL JACKET

BLUE DIAMOND® GLASS COATING

FOAM INSULATION

ULTRA-LOW NOX EMISSIONS

- Complies with SCAQMD Rule 1146.2 and other Air Quality Management Districts with similar requirements of 14 ng/j or 20 ppm.

EASY-TO-INSTALL

- Completely factory-assembled. Only gas, water and vent connections need to be made. All connections are located in front and top of heaters for ease-of-installation and service.

COREGARD™ ANODE ROD

- Our anode rods have a stainless steel core that extends the life of the anode rod allowing superior tank protection far longer than standard anode rods.

MAXIMUM WORKING PRESSURE

- 150 PSI.

MAXIMUM GAS INLET PRESSURE

- 14" W.C.

CODE COMPLIANCE

- Meets UBC, CEC and ICC National Codes.
- The Ultra-Low NOx atmospheric vent residential gas water heater meets the thermal efficiency and standby loss requirements of the U. S. Department of Energy and Current Edition ASHRAE/IESNA 90.1.

6-YEAR LIMITED TANK AND PARTS WARRANTY

- For complete information, consult written warranty or go to statewaterheaters.com.



RESIDENTIAL GAS



Model Number	Gallon Capacity	Recovery at 90°F Rise Gallon Per Hour	BTU Input Per Hour	Height to Top of Draft Hood	Depth	Diameter	Approx. Shipping Weight
†GS6 75 URRS**	74	81	75,100	62-1/16	29-1/2	25-1/4	285 lbs
GS6 100 URRT*	98	82	75,100	70-1/2	30-15/16	27-3/4	350 lbs

*Recovery rating based on 81% thermal efficiency.

**Recovery rating based on 80% thermal efficiency.

†The GS6-75-URRS comes standard with side loop fittings for use with hydronic heating applications.

TANKLESS CONDENSING HIGH EFFICIENCY

**PREMIER® PLATINUM
BEST**

RESIDENTIAL GAS



Outdoor Model

Indoor Model



ANSI Z21.10.3

CSA 4.3

ENERGY STAR® QUALIFIED

CONDENSING TECHNOLOGY PROVIDES 0.93 ENERGY FACTOR (EF)

ULTRA-LOW NO_x EMISSIONS

- Complies with SCAQMD Rule 1146.2 NO_x emission requirements of 14 ng/J or 20 PPM.

COPPER PRIMARY HEAT EXCHANGER

- 25x better heat transfer than stainless steel thus stabilizing outgoing water temperatures quicker and reducing pressure drop across the heat exchanger.

SECONDARY HEAT EXCHANGER

- Marine-grade 316L stainless steel to protect against corrosion.

MAXIMUM FLOW RATE OF 6.6 GPM

INDOOR MODELS

- Include a built-in temperature controller and advanced diagnostics to simplify troubleshooting.

OUTDOOR MODELS

- Wall mount temperature remote controller and advanced diagnostics to simplify troubleshooting.

FACTORY-INSTALLED POWER CORD INCLUDED FOR INDOOR MODELS

ELECTRONIC IGNITION - NO PILOT LIGHT

SAFETY FEATURES:

- Air-Fuel Ratio (AFR) Sensor.
- Exhaust & Water Temperature Safety Control.
- Overheat Cut-Off Fuse.

INTERNAL FREEZE PROTECTION SYSTEM

POWER VENT OR POWER DIRECT VENT

WARRANTY

- 15-year limited warranty on heat exchanger in residential applications.
- 10-year limited warranty on heat exchanger in commercial applications.
- 5-year limited warranty on all parts.

Model Number	Type	Gas Consumption Input		Inlet Gas Pressure		Energy Factor (EF)	Maximum GPM*	Hot/Cold Connections	Gas Connection	Dimensions in Inches			Unit Weight (lbs)
		Minimum BTU/H	Maximum BTU/H	Minimum W.C.	Maximum W.C.					Height	Width	Depth	
Indoor Models													
GTS-140-NIH	Natural	15,000	120,000	5.0	10.5	0.93	6.6	3/4" NPT	1/2" NPT	22-7/8	13-7/8	10-13/16	44
GTS-140-PIH	Propane	13,000	120,000	8.0	14.0	0.93	6.6	3/4" NPT	1/2" NPT	22-7/8	13-7/8	10-13/16	44

15-150 PSI water pressure. 40 PSI or above is recommended for maximum flow.

*Current numbers based on factory testing; 0.5 GPM required for activation; 0.4 GPM required for continuous fire after initial ignition.

Indoor models are certified from sea level to 10,100 ft. elevation.

Outdoor models are certified from sea level to 6,000 ft. elevation.

For outdoor models change "I" to "E" in the model number (example: GTS-140-NEH).

TANKLESS CONDENSING HIGH EFFICIENCY

RESIDENTIAL GAS

PREMIER® PLATINUM
BEST

ENERGY STAR® QUALIFIED

CONDENSING TECHNOLOGY PROVIDES 0.95 ENERGY FACTOR

ULTRA-LOW NO_x EMISSIONS

- Complies with SCAQMD Rule 1146.2 NO_x emission requirements of 14 ng/J or 20 PPM.

HEAT EXCHANGER

- Primary heat exchanger of the GTS-540 is constructed of a commercial-grade copper that is more resilient to erosion. Copper is 25x better at heat transfer than stainless steel thus stabilizing outgoing water temperatures quicker and reducing pressure drop across the heat exchanger.
- Secondary heat exchanger is made of marine-grade 316L stainless steel to protect against corrosion.

MAXIMUM FLOW RATES UP TO 10.0 GPM

FACTORY-INSTALLED POWER CORD INCLUDED FOR INDOOR MODELS

INDOOR MODELS

- Include integrated temperature controls and advanced diagnostics to simplify troubleshooting.

OUTDOOR MODELS

- Include a wall mount temperature remote controller and advanced diagnostics to simplify troubleshooting.

COMMON VENT INDOOR MODELS UP TO 8 UNITS

CAN BE USED IN BOTH RESIDENTIAL AND COMMERCIAL APPLICATIONS

- Easy-Link up to 4 units.
- Multi-Link up to 20 units.

SAFETY FEATURES

- Air-Fuel Ratio (AFR) Sensor.
- Exhaust & Water Temperature Safety Control.
- Overheat Cut-off Fuse.

INTERNAL FREEZE PROTECTION SYSTEM

POWER VENT OR POWER DIRECT VENT DESIGN



Outdoor Model

Indoor Model



ANSI Z21.10.3

CSA 4.3

WARRANTY

- 15-year limited warranty on heat exchanger in residential applications.
- 10-year limited warranty on heat exchanger in commercial applications.
- 5-year limited warranty on all parts.

Model Number	Type	Gas Consumption Input		Inlet Gas Pressure		Energy Factor (EF)	Maximum GPM*	Hot/Cold Connections	Gas Connection	Dimensions in Inches			Unit Weight (lbs)
		Minimum BTU/H	Maximum BTU/H	Minimum W.C.	Maximum W.C.					Height	Width	Depth	
Indoor Models													
GTS-240-NIH	Natural	15,000	160,000	5.0	10.5	0.95	6.6	3/4" NPT	3/4" NPT	23-5/8	17-3/4	11-1/4	58
GTS-240-PIH	Propane	13,000	160,000	8.0	14.0	0.95	6.6	3/4" NPT	3/4" NPT	23-5/8	17-3/4	11-1/4	58
GTS-340-NIH	Natural	15,000	180,000	5.0	10.5	0.95	8	3/4" NPT	3/4" NPT	23-5/8	17-3/4	11-1/4	58
GTS-340-PIH	Propane	13,000	180,000	8.0	14.0	0.95	8	3/4" NPT	3/4" NPT	23-5/8	17-3/4	11-1/4	58
GTS-540-NIH	Natural	15,000	199,000	5.0	10.5	0.95	10	3/4" NPT	3/4" NPT	23-5/8	17-3/4	11-1/4	59
GTS-540-PIH	Propane	13,000	199,000	8.0	14.0	0.95	10	3/4" NPT	3/4" NPT	23-5/8	17-3/4	11-1/4	59

15-150 PSI water pressure. 40 PSI or above is recommended for maximum flow.

*Current numbers based on factory testing; 0.5 GPM for activation; 0.4 GPM required for continuous fire after initial ignition.

Indoor models are certified from sea level to 10,100 ft. elevation. Outdoor models are certified from sea level to 6,000 ft. elevation.

For outdoor models change "I" to "E" in the model number (example: GTS-240-NEH).

TANKLESS NON-CONDENSING

RESIDENTIAL GAS

**PREMIER®
BETTER**



Outdoor Model

Indoor Model



(510 models only)



ANSI Z21.10.3

CSA 4.3

MAXIMUM FLOW RATES UP TO 10.0 GPM

COPPER PRIMARY HEAT EXCHANGER

- Primary heat exchanger of the GTS-510U models are constructed of a commercial-grade copper that is more resilient to erosion. Copper is 25x better at heat transfer than stainless steel thus stabilizing outgoing water temperatures quicker and reducing pressure drop across the heat exchanger.

INDOOR/OUTDOOR MODELS

- Include a wall mount temperature remote controller and advanced diagnostics to simplify troubleshooting.

LOW NOx EMISSION

GTS-510-NI & GTS-510-NE CAN BE USED IN BOTH RESIDENTIAL AND COMMERCIAL APPLICATIONS

- Easy-Link up to 4 units

SAFETY FEATURES

- Air-fuel Ratio (AFR) Sensor.
- Exhaust & Water Temperature Safety Control.
- Overheat Cut-off Fuse.

INTERNAL FREEZE PROTECTION

POWER VENT AND POWER DIRECT VENT DESIGN

WARRANTY

- 15-year limited warranty on heat exchanger in residential applications.
- 10-year limited warranty on heat exchanger in commercial applications.
- 5-year limited warranty on all parts.

Model Number	Type	Gas Consumption Input		Inlet Gas Pressure		Energy Factor (EF)	Maximum GPM*	Hot/Cold Connections	Gas Connection	Dimensions in Inches			Unit Weight (lbs)
		Minimum BTU/H	Maximum BTU/H	Minimum in. W.C.	Maximum in. W.C.					Height	Width	Depth	
Indoor Models													
GTS-110-NI	Natural	19,500	140,000	5.0	10.5	0.82	6.6	3/4" NPT	3/4" NPT	20-1/4	13-3/4	7-3/4	33
GTS-110-PI	Propane	19,500	140,000	8.0	14.0	0.82	6.6	3/4" NPT	3/4" NPT	20-1/4	13-3/4	7-3/4	33
GTS-310-NI	Natural	11,000	190,000	5.0	10.5	0.82	8	3/4" NPT	3/4" NPT	20-1/4	13-3/4	9-1/2	38
GTS-310-PI	Propane	11,000	190,000	8.0	14.0	0.82	8	3/4" NPT	3/4" NPT	20-1/4	13-3/4	9-1/2	38
GTS-510-NI**	Natural	11,000	199,000	5.0	10.5	0.82	10	3/4" NPT	3/4" NPT	20-1/4	13-3/4	9-1/2	39
GTS-510-PI**	Propane	11,000	199,000	8.0	14.0	0.82	10	3/4" NPT	3/4" NPT	20-1/4	13-3/4	9-1/2	39

15-150 PSI water pressure. 40 PSI or above is recommended for maximum flow.

*Current numbers based on factory testing; 0.5 GPM required for activation; 0.4 GPM required for continuous fire after initial ignition.

Indoor models are certified from sea level to 6,000 ft. elevation. Outdoor models are certified from sea level to 6,000 ft. elevation.

For outdoor models change "I" to "E" in the model number (example: GTS-110-NE).

TANKLESS NON-CONDENSING ULTRA-LOW NOX



RESIDENTIAL GAS

ULTRA-LOW NOX EMISSIONS

- Complies with SCAQMD Rule 1146.2 NOx emission requirements of 14 ng/J or 20 PPM.

MAXIMUM FLOW RATES UP TO 10.0 GPM

PRIMARY HEAT EXCHANGER

- Primary heat exchanger of the GTS-510U is constructed of a commercial-grade copper that is more resilient to erosion. Copper is 25x better at heat transfer than stainless steel thus stabilizing outgoing water temperatures quicker and reducing pressure drop across the heat exchanger.

INDOOR/OUTDOOR MODELS

- Include a wall mount temperature remote controller and advanced diagnostics to simplify troubleshooting.

GTS-510U-NI/GTS-510U-NE CAN BE USED IN BOTH RESIDENTIAL AND COMMERCIAL APPLICATIONS

- Easy-Link up to 4 units.
- Multi-Link up to 20 units.

POWER VENT AND POWER DIRECT VENT DESIGN

SAFETY FEATURES

- Air-fuel Ratio (AFR) Sensor.
- Exhaust & Water Temperature Safety Control.
- Overheat Cut-off Fuse.

WARRANTY

- 15-year limited warranty on heat exchanger in residential applications.
- 10-year limited warranty on heat exchanger in commercial applications.
- 5-year limited warranty on all parts.



Indoor Model

Outdoor Model



(510 models only)



ANSI Z21.10.3

CSA 4.3

Model Number*	Type	Gas Consumption Input		Inlet Gas Pressure		Energy Factor (EF)	Maximum GPM**	Hot/Cold Connections	Gas Connection	Dimensions in Inches			Unit Weight (lbs)
		Minimum BTU/H	Maximum BTU/H	Minimum in. W.C.	Maximum in. W.C.					Height	Width	Depth	
GTS-110U-NI	Natural	15,000	140,000	5.0	10.5	0.82	6.6	3/4" NPT	3/4" NPT	20-1/4	13-3/4	9-1/2	33
GTS-310U-NI	Natural	15,000	190,000	5.0	10.5	0.82	8	3/4" NPT	3/4" NPT	20-1/4	13-3/4	9-1/2	37
GTS-510U-NI***	Natural	15,000	199,000	5.0	10.5	0.82	10	3/4" NPT	3/4" NPT	20-1/4	13-3/4	9-1/2	39

15-150 PSI water pressure. 40 PSI or above recommended for maximum flow.

*Current numbers based on factory testing; 0.5 GPM required for activation; 0.4 GPM required for continuous fire after initial ignition.

Indoor models are certified from sea level to 10,100 ft. elevations.

Outdoor models are certified from sea level to 6,000 ft. elevation.

For outdoor models change "I" to "E" in the model number (example: GTS-110U-NE).

PREMIER® HYBRID ELECTRIC HEAT PUMP WATER HEATER

RESIDENTIAL ELECTRIC



The Premier® Hybrid Electric heat pump water heater from State is the most cost effective energy-efficient option available for consumers who want to save money on their utility bills. Premier can reduce water heating costs up to 71% and provide payback in 2-3 years with annual savings of \$437 or more compared to standard electric models. There is no better way to go green than Premier®.

INCREASED ENERGY EFFICIENCY

- Improved efficiency designed in, to ensure available hot water at the lowest possible cost.
- Up to a 3.24 Energy Factor (EF) Rating conserves energy and meets ENERGY STAR® qualifications.

DUAL VOLTAGE CAPABLE

- 208/240 VAC 60Hz capable for use in almost any residential installation.

BACKUP ELECTRIC ELEMENTS

- Long-lasting backup heating elements help heat water according to environmental conditions, demand, and the chosen operating mode.

CHOICE OF OPERATING MODES

- Select from Efficiency, Hybrid, or Electric modes to match heating requirements to environmental conditions and hot water demand.
- Hybrid mode automatically adjusts between compressor and element, depending upon heat requirements.
- Vacation mode reduces operating costs and provides freeze protection during extended absence. Programmable up to 99 days.

DRY FIRE PROTECTION

- Control system ensures the tank is full of water during start up to prevent dry firing the heating elements.

ELECTRONIC USER INTERFACE

- User-friendly electronic interface allows easy control of temperature setting, operating mode, and communicates diagnostics.
- Easy to read temperature display shows temperature in °F or °C.
- Advanced diagnostics convey error messages for service purposes. The last four error messages are saved in the control system memory.

OTHER FEATURES

- Ideal for basements or garage installations; the compressor transfers heat to the water while dehumidifying and cooling the ambient air.
- Washable air filter is easily removed for routine cleaning.

10-YEAR LIMITED WARRANTY

- For complete information, consult written warranty or go to statewaterheaters.com.



Model Number	Gallon Capacity	Energy Factor by Mode			1st Hour Rating (Gal) By Mode			Dimensions in Inches					Approx. Shipping Weight (lbs)	Warranty Term
		Efficiency	Hybrid	Electric	Efficiency	Hybrid	Electric	A	B	C	D	E		
HPX 50 DHPT	50	3.61	3.24	0.93	44.4	70	57.3	63	22	40-5/8	3-3/4	40-1/2	196	10
HPX 66 DHPT	66	3.44	3.17	0.92	62.5	80	78.6	61	27	38	4	38	289	10
HPX 80 DHPT	80	3.27	3.06	0.92	76.3	95	90.1	69	27	46	4	46	307	10

Requires 30 amp breaker.
Top T&P option not available on these models.



PREMIER® HYBRID ELECTRIC HEAT PUMP WATER HEATER

The Premier® Hybrid Electric heat pump water heater from State is the most cost effective energy-efficient option available for consumers who want to save money on their utility bills. Premier can reduce water heating costs up to 63% and provide payback in 2-3 years.



RESIDENTIAL ELECTRIC

INCREASED STORAGE

- High capacity storage tank enables the heat pump to operate more frequently than backup heating elements. This improves energy efficiency and lowers operating costs, saving more money than lower capacity units.
- High capacity storage tank provides more hot water for peak demand periods.

ENERGY EFFICIENCY

- Up to a 2.33 Energy Factor (EF) Rating conserves energy and meets ENERGY STAR® qualifications.

CHOICE OF OPERATING MODES

- Select from Efficiency, Hybrid, or Electric modes to match heating requirements to environmental conditions and hot water demand. Hybrid mode automatically adjusts between compressor and element, depending upon heat requirements. Vacation mode reduces operating costs and provides freeze protection during extended absence.

BACKUP ELECTRIC ELEMENTS

- Long-lasting, 240VAC incoloy heating elements, 2000W lower and 4500W upper, help heat water when in conventional Electric or Hybrid modes.

DRY FIRE PROTECTION

- Control system ensures the tank is full of water during start up, to prevent dry firing the heating elements.

ELECTRONIC USER INTERFACE

- User-friendly LCD touch-pad control, with plain English text and intuitive status icons provides easy interaction.
- Large LCD temperature display shows temperature in °F or °C.
- 3 line, 13 character back lit LCD display communicates current set point, status and operational information.
- Advanced diagnostics convey error messages in plain English. The last four error messages are saved in the control system memory.

ACCESSORY INLET/OUTLET DUCT KITS WITH BOOSTER FAN

- Permits installation in confined spaces as small as 4' x 4' x 8' (128 cubic feet).
- Duct adaptor kits redirect inlet and/or outlet air. Booster fan extends total duct distance from 10' to 25'.
- Engineered solution- ensures optimal efficiency performance.

6-YEAR LIMITED WARRANTY

- For complete information, consult written warranty or go to statewaterheaters.com.



Model Number	Gallon Capacity	Energy Factor by Mode			1st Hour Rating (Gal) By Mode			Height to Top of Tank	Height to T&P	Diameter	Approx. Shipping Weight (lbs)
		Efficiency	Hybrid	Electric	Efficiency	Hybrid	Electric				
EP6 80 DHPT	80	2.30	2.33	0.85	70	84	76	82-1/2	56-1/3	24-1/2	340

Requires 30 amp breaker.
Top T&P option not available on these models.

PREMIER® HYBRID ELECTRIC HEAT PUMP WATER HEATER

RESIDENTIAL ELECTRIC



The Premier® Hybrid Electric heat pump water heater from State is the most cost effective energy-efficient option available for consumers who want to save money on their utility bills. Premier can reduce water heating costs up to 68% and provide payback in 2-3 years with annual savings of \$419 or more compared to standard electric models. There is no better way to go green than Premier®.

INCREASED ENERGY EFFICIENCY

- Improved efficiency designed in, to ensure available hot water at the lowest possible cost.
- Up to a 2.75 Energy Factor (EF) Rating conserves energy and meets ENERGY STAR® qualifications.

BACKUP ELECTRIC ELEMENTS

- Long-lasting backup heating elements help heat water according to environmental conditions, demand, and the chosen operating mode.

CHOICE OF OPERATING MODES

- Select from Efficiency, Hybrid, or Electric modes to match heating requirements to environmental conditions and hot water demand.
- Hybrid mode automatically adjusts between compressor and element, depending upon heat requirements.
- Vacation mode reduces operating costs and provides freeze protection during extended absence. Programmable up to 99 days.

DRY FIRE PROTECTION

- Control system ensures the tank is full of water during start up to prevent dry firing the heating elements.

ELECTRONIC USER INTERFACE

- User-friendly electronic interface allows easy control of temperature setting, operating mode, and communicates diagnostics.
- Easy to read temperature display shows temperature in °F or °C.
- Advanced diagnostics convey error messages for service purposes. The last four error messages are saved in the control system memory.

OTHER FEATURES

- Ideal for basements or garage installations; the compressor transfers heat to the water while dehumidifying and cooling the ambient air.
- Washable air filter is easily removed for routine cleaning.

6-YEAR LIMITED WARRANTY

- For complete information, consult written warranty or go to statewaterheaters.com.



Model Number	Gallon Capacity	Energy Factor by Mode			1st Hour Rating (Gal) by Mode			Dimensions in Inches					Approx. Shipping Weight (lbs.)
		Efficiency	Hybrid	Electric	Efficiency	Hybrid	Electric	A	B	C	D	E	
SP6 50 DHPT	50	2.78	2.75	0.89	42.1	67.5	59.1	63	22	40-5/8	3-3/4	40-1/2	196
SP6 66 DPHT	66	2.71	2.74	0.91	59.7	81	79	61	27	38	4	38	285
SP6 80 DPHT	80	2.71	2.72	0.92	71	90	88	69	27	46	4	46	302

Requires 30 amp breaker.
Top T&P option not available on these models.





ELECTRONIC USER INTERFACE

- Touchscreen display.
- Multiple operating modes help save money.
 - Energy saver and vacation modes available.
- Diagnostic feedback.
- Dry fire protection.
- Grid management ready for future CEA-2045 Bridge module.

ENHANCED HEATING ELEMENTS

- Dual 5500 watt elements for the fastest recovery and reliable operation.
- Incoloy stainless steel elements last longer than standard copper elements.

ENHANCED-FLOW BRASS DRAIN VALVE

CODE COMPLIANCE

- Meets UBC, CEC and HUD National Codes.
- Meets the thermal efficiency and standby loss requirements of the U.S. Department of Energy and current edition of ASHRAE/IESNA 90.1.
- Complies with the Federal Energy Conservation Standards effective April 16, 2015, in accordance with the Energy Policy and Conservation Act (EPCA), as amended.

APPROVED FOR MANUFACTURED HOUSING

- All residential electric water heaters are compliant with HUD standards for mobile homes/manufactured housing.

DESIGN-LISTED BY UNDERWRITERS LABORATORIES

- Certified at 300 PSI test pressure and 150 PSI working pressure. Listed according to ANSI Z21.10.1-CSA 4.1 standards governing storage tank-type water heaters.

10-YEAR LIMITED TANK AND PARTS WARRANTY

- For complete information, consult written warranty or go to statewaterheaters.com.



Model Number	Gallon Capacity	First Hour Rating Gallon	Energy Factor	Recovery @ 90°F Rise Gallon Per Hour	Element Wattage 240V		Height to Top of Tank	Height to T&P	Diameter	Approx. Shipping Weight (lbs)
					Standard	Maximum				
Tall Models										
ENX 40 DXRT	40	61	0.95	25	5500	5500	60-1/4	53-1/4	20	118
ENX 50 DXRT	50	79	0.95	25	5500	5500	60-1/2	51-1/4	22	134
ENX 55 DXRT	55	79	0.94	25	5500	5500	56-1/2	48-1/2	24	145
Short Models										
ENX 40 DXRS	40	56	0.95	25	5500	5500	50	40-3/4	22	109
ENX 50 DXRS	50	58	0.95	25	5500	5500	49-3/4	40-1/4	24	161

Only available for 240V or 208V applications.
 3/4" water connections on 8" center.
 Top-mounted T&P valve not available.
 Equipped as dual element only, no single element configurations available.



ENHANCED HEATING ELEMENTS

- Dual 4500 watt elements for faster recovery and reliable operation.
- Incoloy stainless steel lower element lasts longer than a standard copper element.

SELF CLEANING DIP TUBE

COREGARD™ ANODE ROD

BLUE DIAMOND® GLASS COATING

ENHANCED-FLOW BRASS DRAIN VALVE

CODE COMPLIANCE

- Meets UBC, CEC and HUD National Codes.
- Meets the thermal efficiency and standby loss requirements of the U.S. Department of Energy and current edition of ASHRAE/IESNA 90.1.
- Complies with the Federal Energy Conservation Standards effective April 16, 2015, in accordance with the Energy Policy and Conservation Act (EPCA), as amended.

FOR MANUFACTURED HOUSING

- All residential electric water heaters are compliant with HUD standards for mobile homes/manufactured housing.

DESIGN-LISTED BY UNDERWRITERS LABORATORIES

- Certified at 300 PSI test pressure and 150 PSI working pressure.
- Listed according to ANSI Z21.10.1-CSA 4.1 standards governing storage tank-type water heaters.

6-YEAR LIMITED TANK AND PARTS WARRANTY

- For complete information, consult written warranty or go to statewaterheaters.com.

Model Number	Gallon Capacity	First Hour Rating Gallon	Energy Factor	Recovery @ 90°F Rise Gallon Per Hour	Element Wattage 240V		Height to Top of Tank	Height to T&P	Diameter	Approx. Shipping Weight (lbs)
					Standard	Maximum				
Tall Models										
EN6 30 DORT†	30	47	0.95	21	4500	6000	46-1/2	39-1/2	19	95
EN6 40 DORT†	40	51	0.95	21	4500	6000	60-1/4	53-1/4	20	118
EN6 50 DOBT*	50	70	0.95	21	4500	6000	60-1/4	51-1/4	21	131
EN6 50 DORT†	50	71	0.95	21	4500	6000	60-1/2	51-1/4	22	134
EN6 55 DORT†	55	76	0.94	21	4500	6000	56-1/2	48-1/2	24	145
Short Models										
EN6 30 DOBS*	30	48	0.95	21	4500	6000	39	30-1/2	20	95
EN6 30 DORS†	30	49	0.95	21	4500	6000	39-3/4	30-1/2	22	94
EN6 40 DORS†	40	55	0.95	21	4500	6000	50	40-3/4	22	109
EN6 50 DORS†	50	62	0.95	21	4500	6000	49-3/4	40-3/8	24	161
Lowboy Top Connect Models										
EN6 30 DOLBS*	28	40	0.95	21	4500	6000	30	21-3/4	22	96
EN6 30 DOLS†	28	43	0.95	21	4500	6000	31-1/4	21-3/4	24	115
EN6 40 DOLBS*	38	46	0.95	21	4500	6000	31-3/4	24	24	118
EN6 40 DOLS†+	38	44	0.95	21	4500	6000	33-1/2	24	26	118

3/4" water connections on 8" center.

*Models ship with supplied insulation blanket.

†For 10-year tank and 6-year parts limited warranty, change "N6" to "SX" in Select models and "R" to "N" in tall and short model numbers (example: ESX 40 DONT).

Only available for 240V or 208V applications.

+Top T&P option not available on this model.



APPROVED FOR MANUFACTURED HOUSING

- All residential electric water heaters are compliant with HUD Standards for mobile homes/manufactured housing.

SIDE WATER CONNECTIONS

- For ease of installation in mobile home applications.

COREGARD™ ANODE ROD

- Our anode rods have a stainless steel core that extends the life of the anode rod allowing superior tank protection far longer than standard anode rods.

LONG-LASTING HEATING ELEMENTS

- Screw-in, direct immersion, 3500W/240V or 3000W/120V heating elements for maximum efficiency.

BLUE DIAMOND® GLASS COATING

ENHANCED-FLOW BRASS DRAIN VALVE

- Our residential water heaters have a solid brass, tamper resistant, enhanced-flow, ball type, drain valve.
- Uses a standard female hose fitting that allows for fast and easy draining during maintenance.

CODE COMPLIANCE

- Meets UBC, CEC and HUD National Codes.
- Meets the thermal efficiency and standby loss requirements of the U. S. Department of Energy and current edition of ASHRAE/IESNA 90.1.
- Complies with the Federal Energy Conservation Standards effective April 16, 2015, in accordance with the Energy Policy and Conservation Act (EPCA), as amended.

CERTIFIED TO UL 174 FOR HOUSEHOLD ELECTRIC WATER HEATERS

CSA CERTIFIED AND ASME RATED T&P RELIEF VALVE

DESIGN-LISTED BY UNDERWRITERS LABORATORIES

- Certified at 300 PSI test pressure and 150 PSI working pressure.
- Listed according to ANSI Z21.10.1-CSA 4.1 standards governing storage tank-type water heaters.

6-YEAR LIMITED TANK AND PARTS WARRANTY

- For complete information, consult written warranty or go to statewaterheaters.com.



Model Number	Gallon Capacity	First Hour Rating Gallon	Energy Factor	Recovery @ 90°F Rise Gallon Per Hour	Voltage	Wattage		Height to Top of Heater	Height to T&P	Diameter	Approx. Shipping Weight (lbs)
						Upper Element	Lower Element				
MHE6-30H-030D	30	42	0.95	14	120	3000	3000	46-3/4	39-1/2	19	98
MHE6-30H-035D	30	42	0.95	16	240	3500	3500	46-3/4	39-1/2	19	98
MHE6-40R-030D	40	51	0.95	14	120	3000	3000	50	40-3/4	22	109
MHE6-40R-035D	40	51	0.95	16	240	3500	3500	50	40-3/4	22	109
MHE6-30L-030D*	28	40	0.95	14	120	3000	3000	30	21-3/4	22	96
MHE6-30L-035D*	28	40	0.95	16	240	3500	3500	30	21-3/4	22	96

*Models ship with supplied insulation blanket.
 MHE6 models may have limited element options due to element size or other restrictions.
 3/4" water connections
 Available with side T&P only.



Table Top

Point-Of-Use

Compact



TABLE TOP

- Features a convenient flat porcelain surface at 36" height, providing extra "counter space" wherever installed. All plumbing and electrical connections are made through the back of the water heater. This heater is equipped with a PEX cross-linked polymer dip tube.

POINT-OF-USE

- Designed for low-demand, such as office lavatories or buildings with remote restrooms.

COMPACT

- Side-mounted plumbing and electrical connections (optional top-mounted water connections for field conversion). Designed for installation under a counter, in a crawl space or in other tight spaces.

ENHANCED-FLOW BRASS DRAIN VALVE

CODE COMPLIANCE

- Meets UBC, CEC and HUD National Codes.
- Meets the thermal efficiency and standby loss requirements of the U.S. Department of Energy and current edition of ASHRAE/IESNA 90.1.
- Complies with the Federal Energy Conservation Standards effective April 16, 2015, in accordance with the Energy Policy and Conservation Act (EPCA), as amended.

APPROVED FOR MANUFACTURED HOUSING

- All residential electric water heaters are compliant with HUD Standards for mobile homes/manufactured housing.

DESIGN-LISTED BY UNDERWRITERS LABORATORIES

- Certified at 300 PSI test pressure and 150 PSI working pressure.
- Listed according to ANSI Z21.10.1-CSA 4.1 standards governing storage tank-type water heaters.

6-YEAR LIMITED TANK AND PARTS WARRANTY

- For complete information, consult written warranty or go to statewaterheaters.com.

Model Number	Gallon Capacity	First Hour Rating Gallon	Energy Factor	Element Wattage		Recovery @ 90°F Rise Gallons Per Hour	Height to Top of Heater	Diameter	Approx. Shipping Weight (lbs)
				Standard	Maximum				
Compact Models				120V	240V				
ES6 6 SOMS K	6	N/A	N/A	1650	3000	8	15-1/4	14-1/4	35
ES6 10 SOMS K	10	N/A	N/A	1650	6000	8	18-1/4	16	41
ES6 20 SOMS K	19	N/A	N/A	2500	6000	11	24-3/4	18	68
ES6 20 SOMT K	19.9	N/A	N/A	2500	6000	11	31-5/8	16	68
Lowboy Side-Connect Models				240V					
EN6 30 DOMBS*	28	39	0.95	4500	6000	21	30	22	101
EN6 30 DOMS	28	39	0.95	4500	6000	21	31-1/4	24	115
EN6 40 DOMBS*	38	47	0.95	4500	6000	21	31-3/4	24	118
EN6 40 DOMS	38	44	0.95	4500	6000	21	33-1/2	26	118
Table Top Model				240V					
PG 40 20T4	38	45	0.88	4500	5500	21	36	25	150
Point-Of-Use-Model				120V					
ES6 2 SSUS K	2.5	N/A	N/A	1500 @ 120V		7	13-3/4	13-3/4	20

*Models ship with supplied insulation blanket.

SPMD Series – Pre-Pressurized Diaphragm Tanks

2 through 119-gallon capacities in free-standing, in-line or horizontal designs

Durable butyl rubber parabolic diaphragm

Powder Coated lining bonded to tank shell, protects against rust

Rotating corrosion-resistant base on free-standing models assures stability

Tanks are certified to NSF/ANSI Standard 61-G and 372 listed and are in compliance with California and Vermont's no-lead legislation

5-year Limited Warranty

- For complete information, consult written warranty or go to statewaterheaters.com.



Certified to NSF/ANSI 61-G and 372

	Model Number	Volume (Gallons)	Dimensions in Inches			Weight (lbs)
			Overall Height	To Center of Water Inlet	Diameter	
SPMD Series Free Standing Plastic Base	SPMD-14	14	24-3/4	2-1/4	15-3/8	25.5
	SPMD-20	20	32-3/4	2-1/4	15-3/8	30
	SPMD-31	31	45-1/2	2-1/4	15-3/8	40
	SPMD-36S	36	32-3/8	2-1/4	20	45
	SPMD-52	52	38-5/8	2-1/4	23-3/8	77
	SPMD-86	86	59	2-1/4	23-3/8	105
	SPMD-96	96	63-3/8	2-1/4	23-3/8	111
	SPMD-119	119.5	61-1/4	2-1/2	26	165
SSB Series Free Standing Metal Base	SSB20	20	32-3/4	2-1/4	15-3/8	30
	SSB32	32	45-1/2	2-1/4	15-3/8	40
	SSB36	36	32-3/8	2-1/4	20	45
	SSB52	52	38-5/8	2-1/4	23-3/8	77
	SSB65	65	46-5/8	2-1/4	23-3/8	87
	SSB86	86	59	2-1/4	23-3/8	105
	SSB119	119.5	61-1/4	2-1/2	26	165
SPMDI Series In-Line	SPMDI-2	2	10-3/16	–	8-1/4	5
	SPMDI-5	4.6	14-3/4	–	11	9
	SPMDI-7	7.3	21-1/8	–	11	14
	SPMDI-14	14	21-3/4	–	15-3/8	24
SPMDH Series Horizontal				Overall Length		
	SPMDH-7	7.3	12-7/8	21-1/8	11	16
	SPMDH-14	14	17-3/8	21-3/4	15-3/8	25.5
	SPMDH-20	20	17-3/8	27-1/8	15-3/8	30

SPMD-14, SPMD-20, SPMD-36S connection 1" Female
 SPMD-52, SPMD-86, SPMD-96, SPMD-119 connection 1-1/4" Female
 SPMDI connection 3/4" Male. *SPMDI-14 1" male
 SPMDH-7 connection 3/4" Male. *SPMDH-14, SPMDH-20 connection 1" Male

Heavy-Duty Glass Lined G Series

5-YEAR WARRANTY

- UL Certified.
- Max working pressure is 125 PSIG.
- Anodic Protection.

G SERIES GLASSLINED PUMP TANKS

Model Number	Volume (Gallons)	Dimensions in Inches		Weight (lbs)
		Height	Diameter	
G-42-T	42	49	16-1/2	71
G-42-S	42	35-7/8	20	81
G-82	82	62-1/4	20	154
G-120	120	63	24	206

1-1/4" NPT Spud in head for alternate motor mount or retention tank connection
 All tapping 1-1/4" Water Connections
 1/4" pressure switch tapping on all models



Galvanized Tanks Z Series

1-YEAR WARRANTY

- Certified to NSF/ANSI Standards 61G and 372.

VERTICAL TANKS Z SERIES 12 TO 120 GALLONS – FREE STANDING

Model Number	Volume (Gallons)	Dimensions in Inches		Weight (lbs)
		Height	Diameter	
Z-12	12	26-1/2	12	27
Z-21	21	27	16	45
Z-32	32	38-3/4	16	52
ZT-42	42	51	16	71
ZS-42	42	33-3/4	20	71
Z-82	82	63	20	114
Z-100	120	64-1/2	24	154

VERTICAL TANKS Z SERIES 220-900 GALLONS

Model Number	Volume (Gallons)	Dimensions in Inches		Weight (lbs)
		Height	Diameter	
Z-220	220	78	30	303
Z-315	315	79-1/2	36	416
Z-480	480	87	42	640

VERTICAL TANKS Z SERIES 525-900 GALLONS

Model Number	Volume (Gallons)	Dimensions in Inches		Weight (lbs)
		Height	Diameter	
ZU-525	525	131	36	685
ZU-900	900	161	42	1040

1" NPT Spud in head for alternate motor mount or retention tank connection
 All tapping 1-1/4" Water Connections
 1/4" pressure switch tapping on all models



WATERGUARD™ and TW Series

POTABLE WATER HEATER EXPANSION TANKS

- For use with residential and commercial water heaters to a maximum of 180°.
- Field-adjustable 38 PSI air charge.
- IAPMO approved (150 PSIG Models).
- Tanks are NSF Standard 61-G and 372 listed.
- 5 or 1-year tank warranty.

THERM-O-FLEX™

POTABLE WATER HEATER EXPANSION TANKS

- In-Line Series, Models ETC-7, ETC-14, 3/4" FPT.
- Free Standing Series Models ETC-15 to ETC-36, 1" FPT.
- ETC-52 to ETC-86, 1-1/4" FPT.
- Tanks are NSF Standard 61-G and 372 listed.
- 5-Year warranty.



Certified to NSF/ANSI 61-G and 372

When used in potable applications

Model Number	Maximum (PSIG) Working Pressure	Tank Volume (Gallons)	Maximum Accepted Volume (Gallons)			Connection NPT Size	Overall Height (Inches)	Diameter (Inches)	Weight (lbs)
			20 PSI	40 PSI	60 PSI				
Waterguard™-Series (Potable Expansion Tanks - 5-Year Limited Warranty)									
ETC-2X	150	1.96	1.53	1.27	1.03	3/4	10-3/16	8-1/4	5
ETC-5X	150	4.55	3.75	3.05	2.19	3/4	14-3/4	11	9
ETC-10X	150	9.25	7.80	6.55	5.25	3/4	15-1/2	15-3/8	18
TW-Series (Potable Expansion Tanks - 1-Year Limited Warranty)									
TW-5	150	2.10	1.53	1.27	1.03	3/4	10-3/16	8-1/4	5
TW-12	150	4.40	3.75	3.05	2.19	3/4	14-3/4	11	9
Therm-o-Flex™ Series (Potable Expansion Tanks - 5-Year Limited Warranty)									
ETC-7	100	7.27	4.6	N/A	N/A	3/4	21-1/16	11	14
ETC-14	100	14.6	10.5	8.0	5.6	3/4	21-3/4	15-3/8	25
ETC-15	100	14.6	10.5	8.0	5.6	1	24-3/4	15-3/8	25-1/2
ETC-20	100	20	13.5	10.1	6.7	1	32-3/4	15-3/8	30
ETC-36S	100	36	21	16.6	11.4	1	32-3/8	20	45
ETC-52	100	52	33.8	25.5	19.7	1-1/4	38-5/8	23-3/8	77
ETC-86	100	86	61.2	45.4	32.8	1-1/4	59	23-3/8	105



Space Heating Expansion Tanks

FOR USE WITH RESIDENTIAL SPACE HEATING BOILERS IN CLOSED SYSTEMS

- Not for use with potable water heating systems.
- Designed for in-line or free standing installation.
- Combination models shipped with air vent and separator.
- Field-adjustable 12 PSI air charge.
- Drawn-steel tank with butyl rubber parabolic diaphragm separates air and water.
- Maximum temperature 240° F.
- 100 psi maximum working pressure.
- 1-year tank warranty.

Model Number	Gallon Capacity	Max. Acceptable Volume (Gallons) 20 PSIG	Dimensions in Inches		Shipping Weight (lbs)
			Height	Diameter	
Therm-o-Flex In-Line					
ET-2	1.86	1.53	10-3/16	8-1/4	5
ET-5	4.83	3.75	14-3/4	11	9
ET-7	7.27	4.6	21-1/16	11	14
ET-14	14.6	10.5	21-3/4	15-3/8	22
Therm-o-Flex Combination Units*					
ET-2V-1	1.86	1.53	20-11/16	8-1/4	10
ET-2V-2	1.86	1.53	20-11/16	8-1/4	10
ET-5V-1	4.83	3.75	25-1/8	11	13
ET-5V-2	4.83	3.75	25-1/8	11	13
ET-7V-1	7.27	4.6	31-3/8	11	16
ET-7V-2	7.27	4.6	31-3/8	11	16

*Combination Units with Air Vent and Air Separator

All Models: 100 PSIG Maximum Working Pressure

All In-Line Models have 1/2" MPT connections

Combination Units Air Vent Connection Sizes: ET-2V-1, ET-5V-1, ET-7V-1 have 1" female connection

Combination Units Air Vent Connection Sizes: ET-2V-2, ET-5V-2, ET-7V-2 have 1-1/4" female connection



500 Tennessee Waltz Parkway, Ashland City, TN 37015

800-365-8170

www.statewaterheaters.com