

FLAME-FREE, TOOL-FREE, PROBLEM-FREE.

Quick Connect Refrigerant Fittings | 1/4" - 7/8" Sizes



- No Brazing
- No Tools
- No Nitrogen Purge
- No Hot Work Safety Concerns

JUST PUSH TO CONNECT!

Distributed by

Supco[®]

Beyond Innovation

SBI

UL
LISTED
SA44910

Applications

- Refrigerants
- Glycol
- Non-Potable Water

Product Parameters

- **Continuous Operating Temperature**
250° F / 121° C
- **O-Ring Temperature Rating**
- 40° F / 250° F
- 40° C / 121° C
- **Maximum Rated Pressure (MRP)**
870 PSI / 60 Bar
- **Minimum Burst Pressure**
3600 PSI / 250 Bar
- **Vacuum Pressure Capability**
30 Microns

Approved Refrigerants

- R134A
- R404A
- R290
- R407A
- R600A
- R507
- R22
- R410A
- R32
- R407C

Fitting Materials

- **Fitting Body**
C3771, PC (Polycarbonate)
- **O-Ring**
CR (Cholorprene Rubber)

Agency Approvals and Certifications

- **UL Listed**
207, SA #44910 SDTW(7)

Warranty

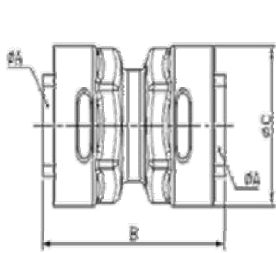
- **5 Year Limited, Contact SUPCO For Details**

Compatibility

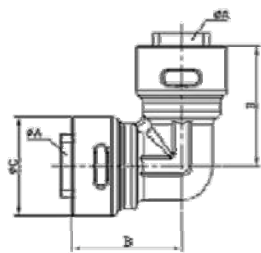
- **Tubing Tolerance**
ASTM B280, UNI EN 12735
- **Approved for Hard & Soft Copper:**
 - Hard Copper (Drawn)
1/4" - 7/8" Type ACR, M, L, K
 - Soft Copper (Annealed)
1/4" - 7/8" Type ACR, L, K

Technical Data

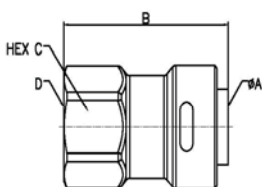
PARAMETERS	CAPABILITY
Maximum Rated Pressure (MRP)	870 PSI / 60 BAR
Burst Pressure Rating (Minimum)	3600 PSI / 250 BAR
Vacuum Capacity Rating	30 microns
Continuous Operating Temperature	250° F / 121° C
Vibration Resistance Rating	UL 1963



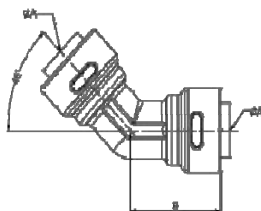
UNION TYPE



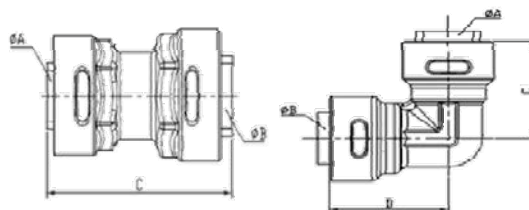
ELBOW TYPE



SOCKET FLARE TYPE



45° ELBOW



REDUCE UNION, ELBOW

1/4" - 7/8" Couplers • Flares • Elbows • Reducers

MODEL NAME		CONNECTION		LENGTH	OUTER DIAMETER	CONNECTION
				(HEX)		THREAD
		ØA (INCH)	B (INCH)	ØC (INCH)	D (INCH)	
COUPLINGS						
SBC14	1/4"	0.250	1.890	0.787	NONE	
SBC38	3/8"	0.375	1.969	0.945		
SBC12	1/2"	0.500	2.126	1.063		
SBC58	5/8"	0.625	2.244	1.181		
SBC34	3/4"	0.750	2.579	1.457		
SBC78	7/8"	0.875	2.618	1.575		
90° ELBOWS						
SBE14	1/4"	0.250	1.161	0.787	NONE	
SBE38	3/8"	0.375	1.260	0.945		
SBE12	1/2"	0.500	1.417	1.063		
SBE58	5/8"	0.625	1.535	1.181		
SBE34	3/4"	0.750	1.732	1.457		
SBE78	7/8"	0.875	1.772	1.575		
45° ELBOWS						
SBE4514	1/4"	0.250	1.024	-	7/16-20 UNF	
SBE4538	3/8"	0.375	1.181	-	5/8-18 UNF	
SBE4512	1/2"	0.500	1.339	-	3/4-16 UNF	
SBE4558	5/8"	0.625	1.398	-	7/8-14 UNF	
FLARES						
SBF14	1/4"	0.250	1.516	0.669	7/16-20 UNF	
SBF38	3/8"	0.375	1.634	0.866	5/8-18 UNF	
SBF12	1/2"	0.500	1.831	0.945	3/4-16 UNF	
SBF58	5/8"	0.625	2.087	1.063	7/8-14 UNF	
MODEL NAME	CONNECTION PIPE			LENGTH		
	ØA (INCH)	B (INCH)	ØC (INCH)	D (INCH)		
REDUCER COUPLINGS						
SBCR3814	1/4"x3/8"	0.250	0.375	1.969	-	
SBCR1238	3/8"x1/2"	0.375	0.500	2.165	-	
SBCR5812	1/2"x5/8"	0.500	0.625	2.362	-	
REDUCER ELBOWS						
SBER3814	1/4"x3/8"	0.250	0.375	1.024	1.181	
SBER1238	3/8"x1/2"	0.375	0.500	1.181	1.339	
SBER5812	1/2"x5/8"	0.500	0.625	1.339	1.398	

SBC14



SBE38



SBE4512



SBF12



SBCR3814



SBER3814



Beyond Innovation

SB1



**RETAIL-READY
PACKAGING >**



Distributed by



@sealedunitpartsco | @supco_hvac | supco.com

CONTACT

P: 800.333.9125 | E: ORDERS@SUPCO.COM | F: 800.458.2818

TO PLACE YOUR ORDER