

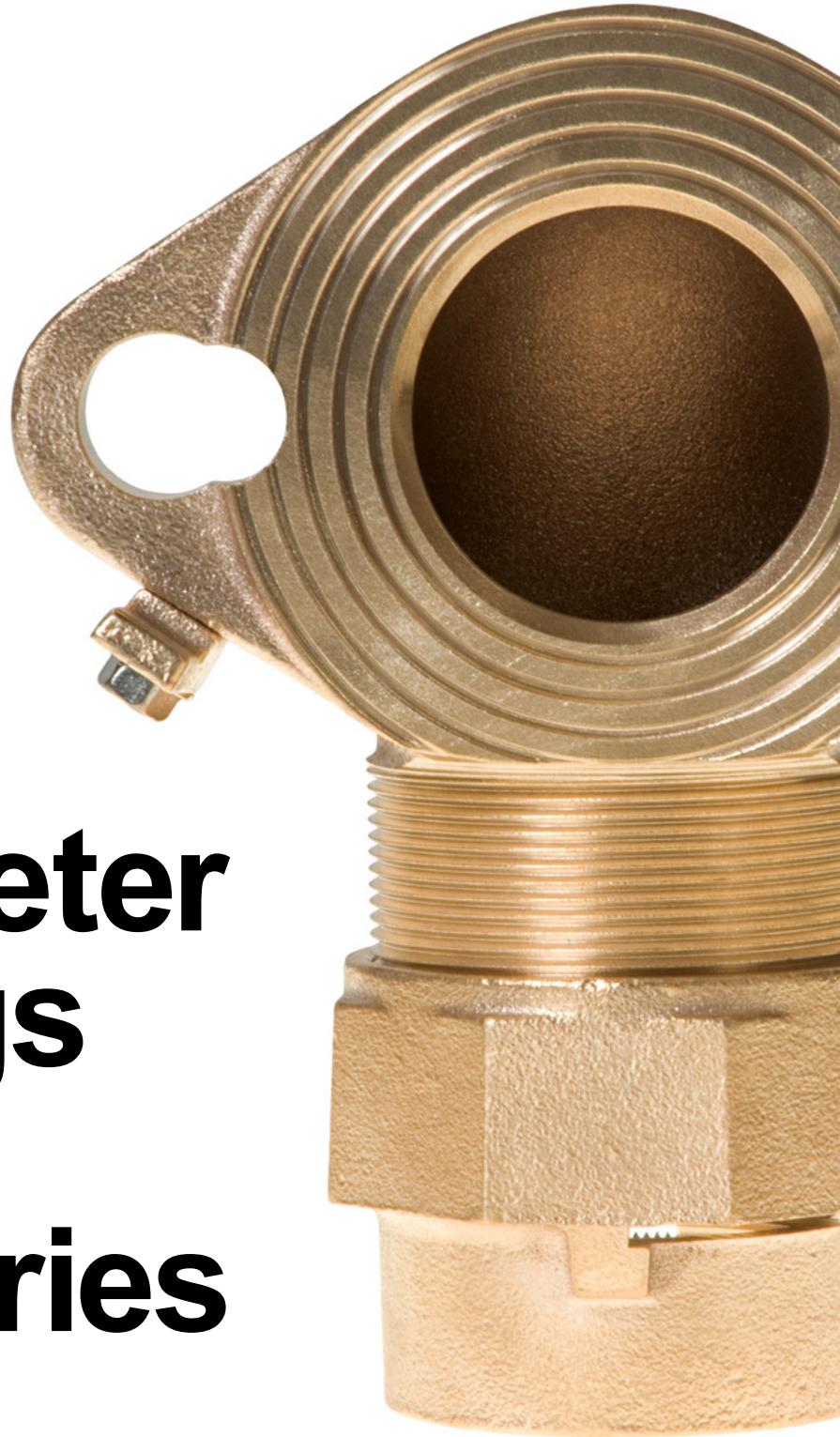


THE FORD METER BOX COMPANY, INC.  
CERTIFIED TO ISO 9001:2015  
10002505

# Section H

01/2018

Web Revision 11/28/2018



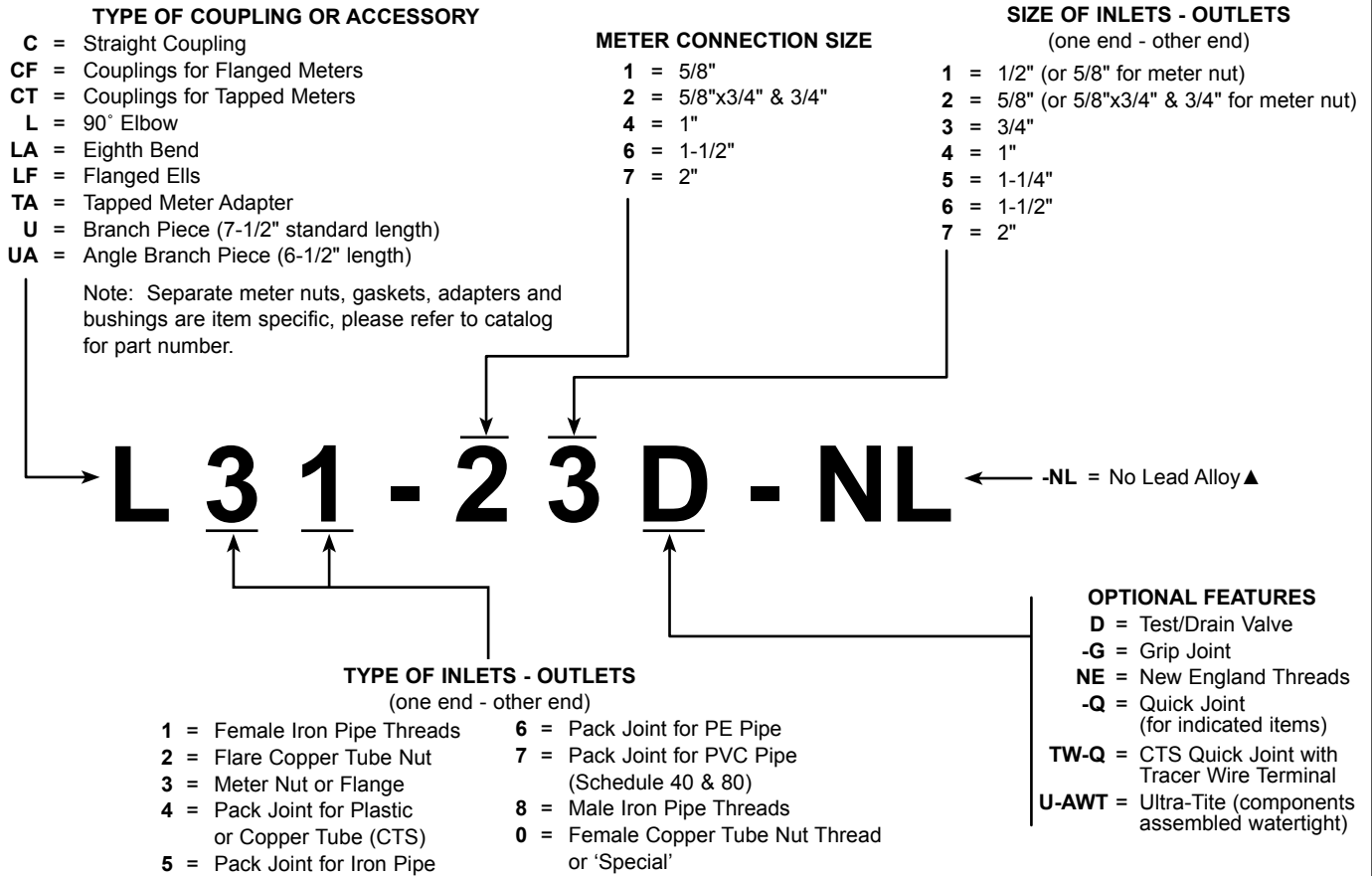
# Ford Water Meter Couplings and Accessories



# Contents

	<b>Page</b>
<b>Information</b>	
Numbering System . . . . .	3
Pack Joint Connections - How the Pack Joint Works . . . . .	4
Quick Joint Connections - How the Quick Joint Works . . . . .	4
Grip Joint Connections - How the Grip Joint Works . . . . .	5
Ultra-Tite Connections - How the Ultra-Tite Works . . . . .	5
Code Marks for Ford Compression Coupling Nuts . . . . .	5
Types of Pipe and Tubing - Explanation of Abbreviations . . . . .	5
Straight Meter Couplings with Pack Joints . . . . .	6
Lok-Pak Meter Couplings . . . . .	6
Insert Stiffeners . . . . .	7
Dimension Comparison Table for Plastic, Copper and Galvanized Iron . . . . .	7
Copper Rounding Tool . . . . .	7
<b>Meter Gaskets</b> . . . . .	8
<b>Resetter Gaskets</b> . . . . .	8
<b>Hex Bars for Body Style C Couplings</b> . . . . .	8
<b>Dielectric Bushings</b> . . . . .	8
<b>Straight Meter Couplings</b>	
Meter Coupling Nuts Only . . . . .	8
Straight Meter Couplings by Male Iron Pipe Thread . . . . .	9
Straight Meter Couplings with Integral Check Valves . . . . .	9
Straight Meter Couplings by Female Iron Pipe Thread and Flare Copper . . . . .	9
Straight Meter Couplings with Pack Joints . . . . .	10
<b>Angle Meter Couplings</b> . . . . .	10
<b>Flanged Meter Couplings</b>	
Flanged Ells for 1-1/2" and 2" Meters . . . . .	11
Lok-Pak Meter Couplings for Flanged Meters . . . . .	11
Lok-Pak Meter Couplings for Tapped Meters . . . . .	11
Meter Flanges . . . . .	12
<b>Meter Adapters</b> . . . . .	12
<b>Meter Idlers</b> . . . . .	13
<b>Meter Coupling Bushings (3/4" through 2")</b> . . . . .	13
<b>“U” Branch Pieces</b> . . . . .	14
<b>Angle “U” Branch Pieces</b> . . . . .	14
<b>Warranty</b> . . . . .	16

# Water Meter Couplings and Accessories Numbering System



Note: See item listings in catalog section H to ensure desired sizes and options are available.

Ford offers many products that are classified to ANSI/NSF Standard 61. To verify if a product is classified to ANSI/NSF Standard 61, contact the Ford Meter Box Customer Service Department at 260-563-3171 or visit [fordmeterbox.com](http://fordmeterbox.com). Ford Meter Box meets your need for ANSI/NSF Standard 61 approved items with products that are proven and reliable.

Due to design improvements, product images in the catalog do not always reflect the most current design detail.

▲ Ford Meter Box no-lead brass products manufactured from UNS/CDA No. 89833 alloy shall contain no more than 0.25% total lead content by weight. United States federal and state laws allow the use of products manufactured from UNS C83600 85-5-5-5 brass alloy for only non-potable water systems within the United States.

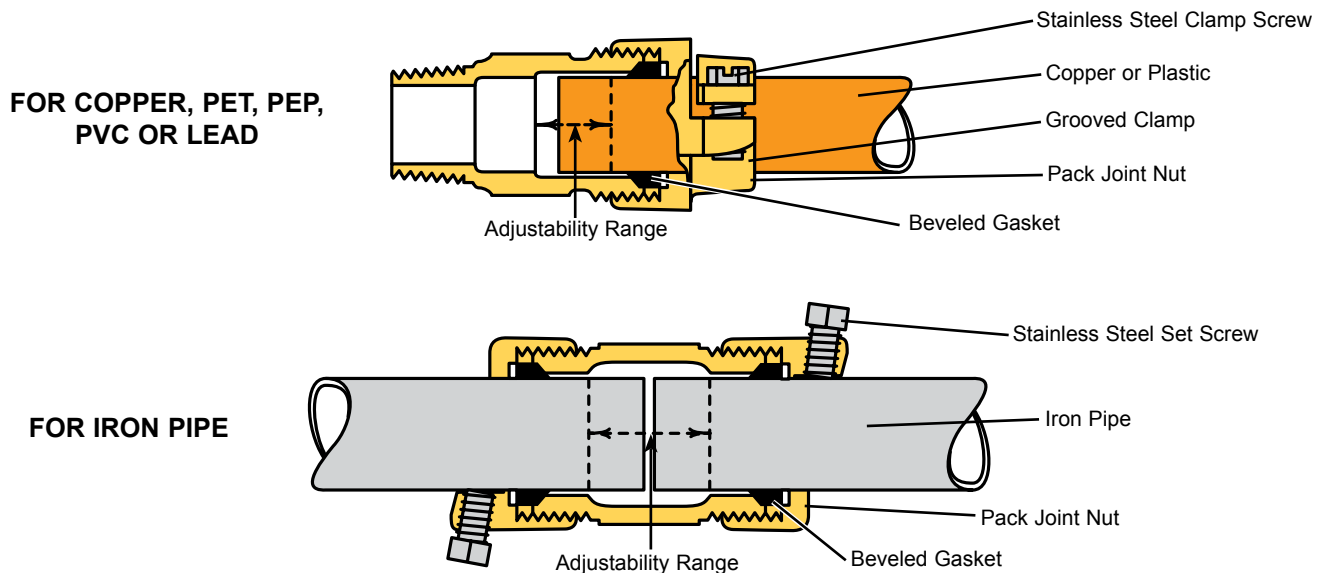
**Parties responsible for monitoring and maintaining proper water system design must exercise full responsibility in understanding and upholding the full intent and scope of applicable lead laws.**

# Pack Joint Connections

In a compression coupling, too much can hurt as much as too little. Excessive mechanical pullout resistance, for example, could mean ripping the corporation stop from the main if a backhoe catches the service line. Ford Pack Joints offer a balanced design on every type of pipe. Stab the pipe into the fitting, tighten the EPDM gasketed nut for a watertight seal, and tighten the clamp screw. You get all the pullout resistance you need for the heaviest backfill loads, but not more than you need.

## Pack Joint Connections - How the Pack Joint Works

1. Tightening the large Pack Joint nut compresses an EPDM beveled gasket to make it watertight around the pipe or tubing.
2. For copper or plastic tubing and pipe, there is a locking device, a split clamp, which is drawn down securely on the tubing or pipe by tightening a stainless steel screw. Machined grooves in the clamp provide positive gripping action.
3. For iron pipe, a stainless steel set screw on the Pack Joint bites into and locks on to hold the pipe.



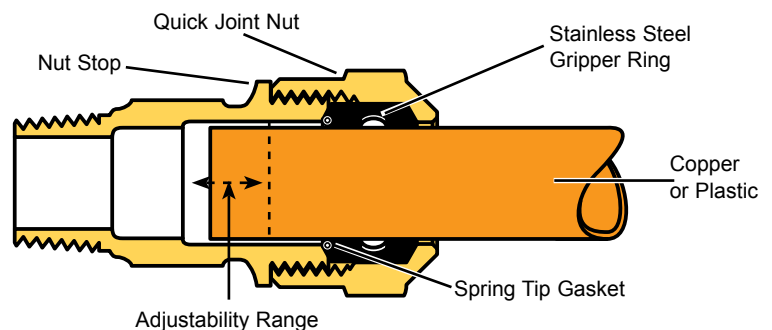
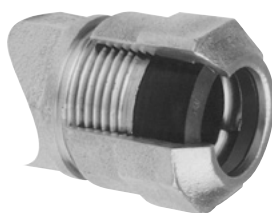
# Quick Joint Connections

The Ford Quick Joint offers traditional Ford features of quality and reliability. This easy-to-use fitting is available on a wide variety of Ford products. Just stab the copper or plastic tubing into the fitting and tighten down the compression nut to the stop. That's it! The Quick Joint provides excellent pullout resistance and superior hydraulic blow-off protection. Note: The Ford Quick Joint Nut **IS NOT** interchangeable with other compression fittings.

## Quick Joint Connections - How the Quick Joint Works

1. A stainless steel gripper ring, molded into a large gasket, is drawn down when the nut is tightened, providing the hydraulic seal and mechanical restraint.
2. A transparent fluorocarbon coating covers the interior of the nut, providing smooth torque transfer. This coating eliminates "back drive", reduces tightening torque and minimizes gasket distortion.
3. A positive, external and visual stop ensures correct installation, providing maximum performance.

The Ford Quick Joint is designed and manufactured for copper or for copper tube size SDR 9 Polyethylene plastic with a solid tubular metal insert.



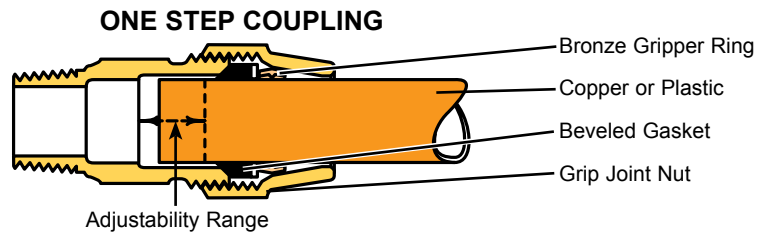
# Grip Joint Connections

## Grip Joint Connections - How the Grip Joint Works

1. Tightening the Grip Joint nut compresses an EPDM beveled gasket to form a watertight seal around the pipe or tubing.
2. The bronze gripper ring is drawn down when the nut is tightened, providing the mechanical lock on the pipe.
3. Grip Joint couplings are to be used only with 3/4" through 2" copper or PET, and 3/4" & 1" PEP.



Ford Grip Joint



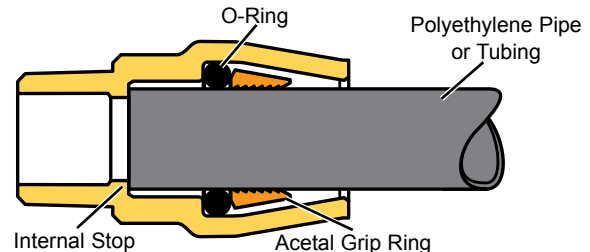
## Ford Ultra-Tite Connections

The Ford Ultra-Tite compression coupling provides an immediate lock onto Polyethylene Pipe (PEP/IPS) or Polyethylene Tubing (PET/CTS) when inserted to the internal stop.

### Ford Ultra-Tite Connections - How the Ultra-Tite Works

1. An integral stop within the connection ensures full pipe insertion.
2. The directional serrations of the plastic grip ring engage the outside diameter of the pipe or tubing providing a mechanical seal and lock.
3. The internal O-ring provides a hydraulic seal.

### STAB COUPLING FOR 3/4" AND 1" PEP AND PET (No insert required or recommended.)



Installation instructions are shipped with product and posted on the Ford Meter Box website. Consult pipe or tubing manufacturer for specific installation requirements.

Ultra-Tite connections on corporation stops are assembled hand-tight and must be removed for drilling or tapping machine adaptation to corporation stop outlet thread. Once the tap is made, the Ultra-Tite should be securely tightened to the corporation stop outlet thread. A female iron pipe adapter will be needed for drilling or tapping machine adaptation when using corporation stops with Ultra-Tite connections. **Contact factory if using adapters other than female iron pipe.**

## Code Marks for Ford Compression Coupling Nuts

- CTS** - Copper and PET  
**PEP** - PE pipe  
**PVC** - PVC pipe



Ford Pack Joint

## Types of Pipe and Tubing

### Explanation of Abbreviations

**Copper Tube** - CTS - Copper tubing is widely used as a service line and the **outside diameter** is closely held by manufacturers. The outside diameter of copper tubing has become a standard in the industry and is known as "copper tube size."

**Plastic Tubing** - CTS - Flexible water service tubing in what is referred to as "copper tube size." Plastic tube refers to *any* plastic with the same **outside diameter** as corresponding sizes of copper tube. PET – Polyethylene tubing.

**Plastic Pipe** - PEP - Flexible water service pipe in what is referred to as "pipe size." Plastic pipe refers to *any* pipe having the same **inside diameter** as corresponding sizes of standard iron pipe. PEP – Polyethylene pipe.

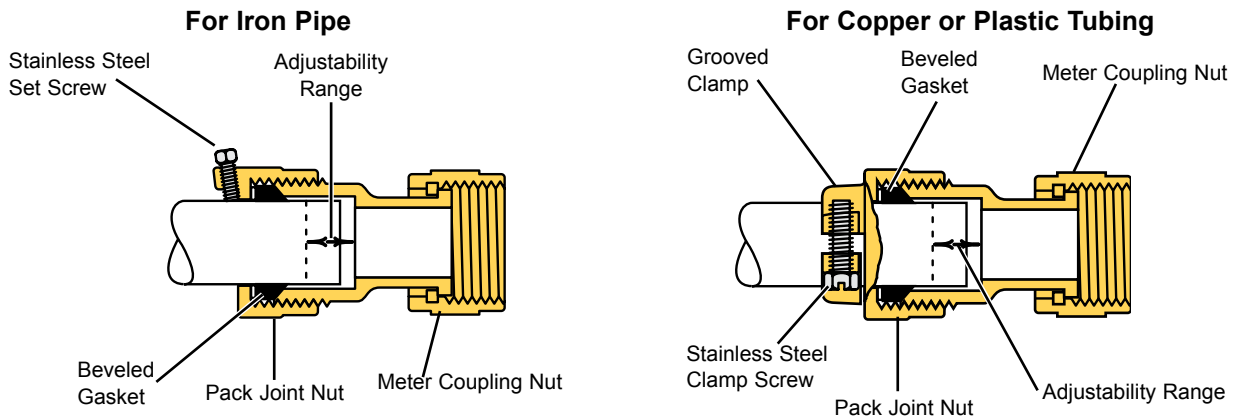
**PVC Pipe** - PVC - Polyvinyl Chloride rigid plastic pipe. PVC pipe refers to polyvinyl chloride rigid plastic pipe having the same **outside diameter** as corresponding sizes of standard iron pipe.

**Ford Pack Joints for PVC are recommended for use only with Schedule 40 and Schedule 80 PVC.**

# Meter Couplings

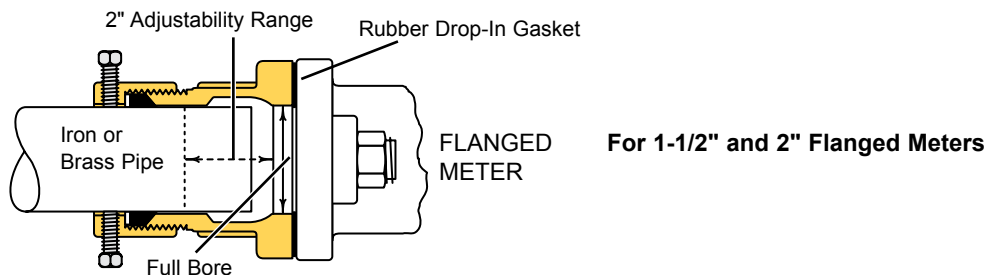
## Straight Meter Couplings with Pack Joints

Connecting meters to iron, copper or plastic service lines, old or new, is expedited with Ford Pack Joint Meter Couplings. The Pack Joint connection makes a tight, permanent joint on copper, plastic or iron pipe *without flaring, soldering or threading*. The Pack Joint provides adjustability for inaccuracies in pipe length and alignment. See page 4 for further information on Pack Joint connections.



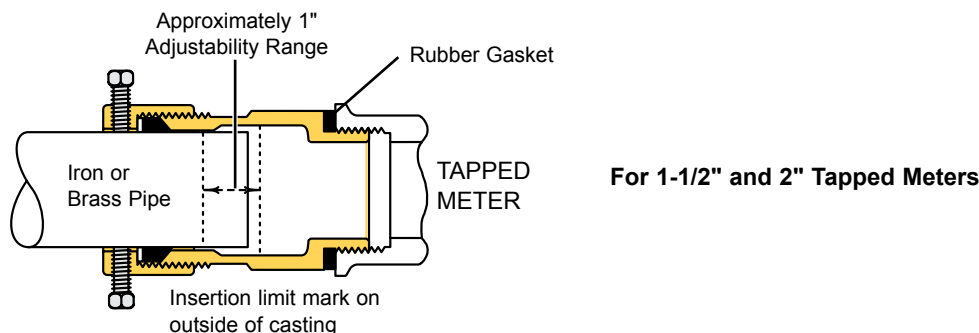
## Lok-Pak Meter Couplings

Lok-Pak Couplings simplify the installation of 1-1/2" and 2" water meters and facilitate meter changes. They provide adjustability of spacing for the meter, and a measure of flexibility in the piping. Joints are dependably and permanently watertight and eliminate pipe threading and/or tube flaring.



As shown in the drawing, each Lok-Pak Coupling for a flanged meter has a lateral adjustment of 2".

The Pack Joint on all Lok-Pak Couplings tightens easily. The Pack Joint nut is locked in place on iron or brass pipe by two stainless steel set screws, and on copper or plastic by a grooved split clamp with a clamp screw. Details of the Ford Pack Joint are shown and described on page 4.

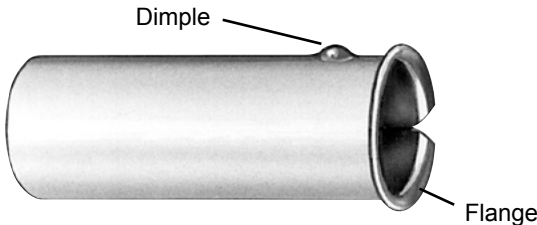


Each coupling for a tapped meter provides adjustment of about 1". To ensure space for retraction from the meter, each coupling for tapped meters has a line on the casting to show the limit to which iron, brass or copper pipe can be inserted.

# Accessories

## Insert Stiffeners

Ford Insert Stiffeners are solid 304 tubular stainless steel, dimpled and flanged to retain placement within the service line.



Before using Ford Insert Stiffeners, be sure inside tubing or pipe dimensions correspond to the table below.

Ford recommends using insert stiffeners with plastic pipe or tubing.

**Note: Consult pipe or tubing manufacturer for specific installation requirements.**

### 50 Series For Polyethylene Tubing (PET)

CATALOG NUMBER	NOMINAL SIZE	PET ID	APPROX. WT. LBS.*	STD. PKG. QTY.
INSERT-51	3/4"	0.681	4.8	200
INSERT-52	1"	0.875	4.2	100
** INSERT-53-72	1-1/4"	1.069	2.4	50
***♦INSERT-53-72-Q	1-1/4"	1.069	2.4	50
INSERT-54	1-1/2"	1.263	3.1	25
INSERT-55	2"	1.653	6.0	40
♦INSERT-54-Q	1-1/2"	1.263	2.6	30
♦INSERT-55-Q	2"	1.653	5.8	50

### 70 Series For Polyethylene Pipe (PEP)

CATALOG NUMBER	NOMINAL SIZE	PEP ID	APPROX. WT. LBS.*	STD. PKG. QTY.
INSERT-71	3/4"	0.824	4.4	100
** INSERT-53-72	1"	1.049	2.9	50
***♦INSERT-53-72-Q	1"	1.049	2.9	50
INSERT-73	1-1/4"	1.380	5.8	75
INSERT-74	1-1/2"	1.610	5.5	45
INSERT-75	2"	2.067	9.7	50

### Inserts For OD Controlled High Density Polyethylene (HDPE) Pipe with PVC O.D.

CATALOG NUMBER	NOMINAL SIZE AND PIPE TYPE	DR	HDPE OD	NOMINAL ID
** INSERT-53-72	1" IPS	11	1.315	1.06
INSERT-73-DR11	1-1/4" IPS	11	1.660	1.34
INSERT-74-DR11	1-1/2" IPS	11	1.900	1.53
INSERT-75-DR11	2" IPS	11	2.375	1.92

\* Weights for insert stiffeners are for standard package quantities.

\*\* INSERT-53-72 fits 1-1/4" plastic tubing (1.069 I.D.), 1" plastic pipe (1.049 I.D.) and 1" IPS HDPE (1.055 I.D.).

\*\*\* INSERT-53-72-Q fits 1-1/4" plastic tubing (1.069 I.D.) and 1" plastic pipe (1.049 I.D.).

♦ These inserts are specifically designed and required for Quick Joint Fittings. They **ARE NOT** interchangeable for use with any other types of compression fittings.

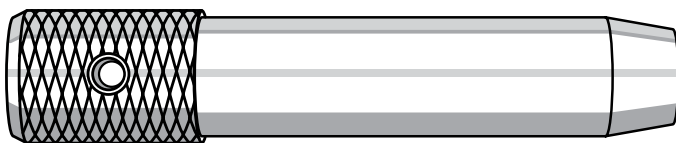
## DIMENSION COMPARISON TABLE FOR PLASTIC, COPPER AND GALVANIZED IRON

PIPE AND TUBING TYPE	PSI	SDR	CONTROL	O.D.						I.D.					
				1/2"	3/4"	1"	1-1/4"	1-1/2"	2"	1/2"	3/4"	1"	1-1/4"	1-1/2"	2"
Copper	-	-	OD	0.625	0.875	1.125	1.375	1.625	2.125	-	-	-	-	-	-
PET	PE3408 200 PE4710 250	SDR9	OD	0.625	0.875	1.125	1.375	1.625	2.125	-	0.681	0.875	1.069	1.263	1.653
PEP	PE3408 200 PE4710 250	SIDR7	ID	-	1.060	1.349	1.774	2.070	2.657	-	0.824	1.049	1.380	1.610	2.067
PVC	-	-	OD	0.840	1.050	1.315	1.660	1.900	2.375	-	-	-	-	-	-
Galv IP	-	-	OD	0.840	1.050	1.315	1.660	1.900	2.375	-	-	-	-	-	-

Ford Pack Joints for PVC are recommended for use only with Schedule 40 and Schedule 80 PVC.

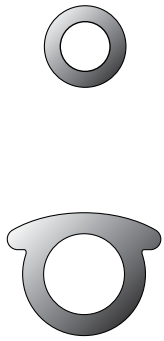
## Copper Rounding Tool

When copper tubing is used, Ford recommends that it be checked to see if it is perfectly round. Compression couplings do not perform properly if the tubing is out-of-round. Unrounded copper can result in a marginal gasket seal that may eventually permit leakage. The Copper Rounding Tool forms the copper tubing for a proper fit.



CATALOG NUMBER	TUBE SIZE	APPROX. WT. LBS.
CRT-3	3/4"	0.7
CRT-4	1"	1.4
CRT-5	1-1/4"	2.3
CRT-6	1-1/2"	3.8
CRT-7	2"	8.0

# Meter Gaskets



CATALOG NUMBER	DESCRIPTION - USAGE	APPROX. WT. LBS.*	STD. PKG. QTY.
GT-109	5/8" Composition Coupling Gasket - 5/8" Meter	3.0	1000
GT-116	3/4" Composition Coupling Gasket - 5/8"x3/4" & 3/4" Meter	2.3	500
GT-121	1" Composition Coupling Gasket - 1" Meter	2.8	400
GT-167	5/8" Leather Coupling Gasket - 5/8" Meter	2.2	1000
GT-113	3/4" Leather Coupling Gasket - 5/8"x3/4" & 3/4" Meter	1.8	500
GT-163	1" Leather Coupling Gasket - 1" Meter	2.2	400
GT-110	Leather Changeover Coupling Gasket for changing 5/8" Meter to 5/8"x3/4" Meter	-	-
GT-108	5/8" Rubber Coupling Gasket - 5/8" Meter	2.8	1000
GT-114	3/4" Rubber Coupling Gasket - 5/8"x3/4" & 3/4" Meter	2.0	500
GT-120	1" Rubber Coupling Gasket - 1" Meter	2.6	400
GT-124	1-1/4" Rubber Coupling Gasket - 1-1/4" Meter	-	-
GT-140	1-1/2" Rubber Drop-In Gasket - 1-1/2" Flanged Meter	2.2	50
GT-141	2" Rubber Drop-In Gasket - 2" Flanged Meter	2.5	50
GT-131	1-1/2" Rubber Gasket - 1-1/2" Tapped Meter	-	-
GT-135	2" Rubber Gasket - 2" Tapped Meter	-	-
GT-126	1-1/2" Rubber Coupling Gasket - 1-1/2" Male Threaded Meter	-	-
GT-127	2" Rubber Coupling Gasket - 2" Male Threaded Meter	-	-

Gaskets are furnished with all meter coupling connections. Rubber drop-in gaskets are furnished with all flanges. All gaskets are 1/8" thick.

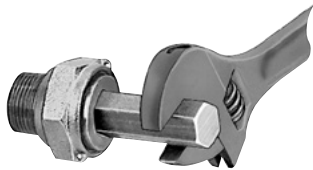
\* Weights for gaskets are for standard package quantities.

# Rubber Resetter Gaskets



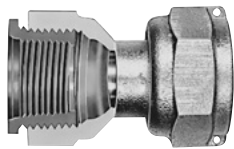
CAT. No.	DESCRIPTION - USAGE
GT-108	5/8" Rubber Resetter Gasket for 5/8" meter
GT-114	3/4" Rubber Resetter Gasket for 5/8"x3/4" and 3/4" meter
GT-120	1" Rubber Resetter Gasket for 1" meter

# Hex Bars for Body Style C



CATALOG NUMBER	DESCRIPTION	WRENCH SIZE	APPROX. WT. LBS.
HBW-3	for 3/4" Couplings, body style C	11/16"	0.6
HBW-4	for 1" Couplings, body style C	13/16"	0.6

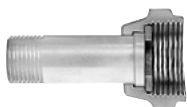
# Dielectric Bushings (for insulating service lines)



CATALOG NUMBER	DESCRIPTION	APPROX. WT. LBS.
DB-34	3/4" Female Pipe Thread x 1" Male Pipe Thread	-
DB-45	1" Female Pipe Thread x 1-1/4" Male Pipe Thread	-
DB-56	1-1/4" Female Pipe Thread x 1-1/2" Male Pipe Thread	-
DB-67	1-1/2" Female Pipe Thread x 2" Male Pipe Thread	-
DB-78	2" Female Pipe Thread x 2-1/2" Male Pipe Thread	-

Examples: DB-34 and C31-24-NL assembly will insulate a 3/4" line, a DB-45 and C31-45-NL will insulate a 1" line.

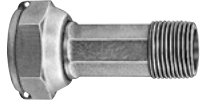
# Meter Coupling Nuts Only



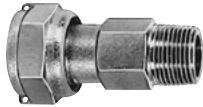
CATALOG NUMBER	DESCRIPTION	APPROX. WT. LBS.
MN-1	5/8" Meter Coupling Nut Only for "A" and "C" Body Style Straight Meter Couplings	0.14
CMC	5/8" to 3/4" Changeover Meter Coupling Nut for Changing 5/8" "A" Body Style Coupling from 5/8" Meter to 5/8"x3/4" Meter	0.23
MN-2	3/4" Meter Coupling Nut Only for "A" and "C" Body Style Straight Meter Couplings	0.24
MN-4	1" Meter Coupling Nut Only for "A" and "C" Body Style Straight Meter Couplings	0.31
MN-7	2" Meter Coupling Nut Only for "A" and "C" Body Style Straight Meter Couplings	-

# Straight Meter Couplings

## Straight Meter Couplings by Male Iron Pipe Thread



Body Style A  
(hex on barrel)



Body Style B  
(heavy hex on barrel)

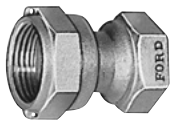


Body Style C  
(short with inside  
wrench hex)

CATALOG NUMBER	Description of Coupling			APPROX. WEIGHT LBS.
	BODY STYLE	MALE IRON PIPE THREAD SIZE	COUPLING LENGTH	
<b>FOR 5/8" METERS</b>				
C38-11-2-NL	A	1/2"	2"	0.3
C38-11-2-188-NL	A	1/2"	2-3/16"	0.4
**C38-11-2-375-NL	A	1/2"	2-3/8"	0.4
C38-13-2-188-NL	B	3/4"	2-3/16"	0.4
<b>FOR 5/8" x 3/4" AND 3/4" METERS</b>				
C38-21-1-625-NL	B	1/2"	1-5/8"	0.5
C38-21-2-375-NL	A	1/2"	2-3/8"	0.6
C38-23-1-437-NL	C	3/4"	1-7/16"	0.4
C38-23-1-5-NL	C	3/4"	1-1/2"	0.4
C38-23-1-625-NL	C	3/4"	1-5/8"	0.4
C38-23-2-NL	A	3/4"	2"	0.5
C38-23-2-25-NL	A	3/4"	2-1/4"	0.5
**C38-23-2-5-NL	A	3/4"	2-1/2"	0.5
C38-23-2-75-NL	A	3/4"	2-3/4"	0.5
C38-23-3-NL	A	3/4"	3"	0.5
C38-23-8-5-NL	A	3/4"	8-1/2"	1.6
C38-23-12-NL	B	3/4"	12"	2.3
C38-24-2-5-NL	B	1"	2-1/2"	0.6
<b>FOR 1" METERS</b>				
C38-44-1-5-NL	C	1"	1-1/2"	0.6
C38-44-2-NL	C	1"	2"	0.6
C38-44-2-25-NL	B	1"	2-1/4"	0.8
**C38-44-2-625-NL	A	1"	2-5/8"	0.7
C38-44-3-5-NL	A	1"	3-1/2"	0.7
C38-44-8-5-NL	A	1"	8-1/2"	1.6
<b>FOR 1-1/4" METERS</b>				
C38-54-2-75-NL	A	1"	2-3/4"	1.2
<b>FOR 1-1/2" METERS</b>				
C38-66-2-875-NL	A	1-1/2"	2-7/8"	1.8
<b>FOR 2" METERS</b>				
C38-77-NL	A	2"	3-1/16"	3.0

\*\* Standard coupling length

## Straight Meter Couplings by Female Iron Pipe Thread and Flare Copper



Catalog Number	Description			Coupling Length	Approx. Wt. Lbs.
<b>METER SWIVEL NUT BY FEMALE IRON PIPE THREAD</b>					
C31-13-NL	5/8" Meter	x	3/4" Female Iron Pipe	1-7/8"	0.5
C31-23-NL	5/8"x3/4" & 3/4" Meter	x	3/4" Female Iron Pipe	1-3/4"	0.6
C31-24-NL	5/8"x3/4" & 3/4" Meter	x	1" Female Iron Pipe	2"	0.7
C31-44-NL	1" Meter	x	1" Female Iron Pipe	2-3/8"	0.9
C31-45-NL	1" Meter	x	1-1/4" Female Iron Pipe	2-3/8"	1.1
<b>METER SWIVEL NUT BY FLARE COPPER</b>					
C32-13-NL	5/8" Meter	x	3/4" Flare Copper	2-3/16"	0.8
C32-23-NL	5/8"x3/4" & 3/4" Meter	x	3/4" Flare Copper	2-3/16"	0.9
C32-44-NL	1" Meter	x	1" Flare Copper	2-1/2"	1.4

Note: Length of couplings for flare copper is measured less the copper tube nut.

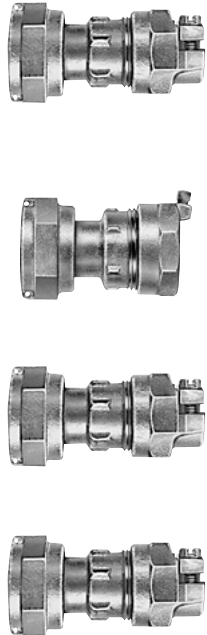
# Straight Meter Couplings with Integral Check Valves

## Straight Meter Couplings by Male Iron Pipe Thread



CATALOG NUMBER	BODY STYLE	MALE IRON PIPE THREAD SIZE	COUPLING LENGTH	NUMBER OF CHECK VALVES	APPROX. WT. LBS.
<b>For 5/8" x 3/4" and 3/4" Meters</b>					
C38-23H1-2-5-NL	B	3/4"	2-1/2"	1	0.6
C38-23H2-2-5-NL	B	3/4"	2-1/2"	2	0.6
<b>For 1" Meters</b>					
C38-44H1-2-625-NL	B	1"	2-5/8"	1	0.8
C38-44H2-3-NL	B	1"	3"	2	1.0

# Straight Meter Couplings With Pack Joints



CATALOG NUMBER	DESCRIPTION			APPROX. WT. LBS.
<b>METER SWIVEL NUT BY PACK JOINT FOR COPPER OR PLASTIC TUBING (CTS)</b>				
C34-11-NL	5/8" Meter	x	1/2" CTS P.J.	0.7
◆ C34-13-NL	5/8" Meter	x	3/4" CTS P.J.	0.7
C34-21-NL	5/8"x3/4" & 3/4" Meter	x	1/2" CTS P.J.	0.9
C34-22-NL	5/8"x3/4" & 3/4" Meter	x	5/8" CTS P.J.	0.8
◆ C34-23-NL	5/8"x3/4" & 3/4" Meter	x	3/4" CTS P.J.	0.8
◆ C34-24-NL	5/8"x3/4" & 3/4" Meter	x	1" CTS P.J.	0.9
◆ C34-44-NL	1" Meter	x	1" CTS P.J.	1.2
◆ C34-44-4-75-NL	1" Meter	x	1" CTS P.J.	1.7
C34-45-NL	1" Meter	x	1-1/4" CTS P.J.	1.7
<b>METER SWIVEL NUT BY PACK JOINT FOR IRON PIPE</b>				
C35-11-NL	5/8" Meter	x	1/2" Iron Pipe P.J.	0.6
C35-13-NL	5/8" Meter	x	3/4" Iron Pipe P.J.	0.6
C35-21-NL	5/8"x3/4" & 3/4" Meter	x	1/2" Iron Pipe P.J.	0.7
C35-23-NL	5/8"x3/4" & 3/4" Meter	x	3/4" Iron Pipe P.J.	0.8
■ C35-23-4-875-NL	5/8"x3/4" & 3/4" Meter	x	3/4" Iron Pipe P.J.	1.2
C35-44-NL	1" Meter	x	1" Iron Pipe P.J.	1.5
■ C35-44-4-75-NL	1" Meter	x	1" Iron Pipe P.J.	1.9
<b>METER SWIVEL NUT BY PACK JOINT FOR PE PIPE</b>				
▶ C36-13-NL	5/8" Meter	x	3/4" PE Pipe P.J.	0.9
▶ C36-23-NL	5/8"x3/4" & 3/4" Meter	x	3/4" PE Pipe P.J.	0.9
▶ C36-44-NL	1" Meter	x	1" PE Pipe P.J.	1.8
<b>METER SWIVEL NUT BY PACK JOINT FOR PVC PIPE</b>				
C37-13-NL	5/8" Meter	x	3/4" PVC Pipe P.J.	0.8
C37-21-NL	5/8"x3/4" & 3/4" Meter	x	1/2" PVC Pipe P.J.	0.7
C37-23-NL	5/8"x3/4" & 3/4" Meter	x	3/4" PVC Pipe P.J.	0.9
■ C37-23-4-875-NL	5/8"x3/4" & 3/4" Meter	x	3/4" PVC Pipe P.J.	1.4
C37-44-NL	1" Meter	x	1" PVC Pipe P.J.	1.7
■ C37-44-4-75-NL	1" Meter	x	1" PVC Pipe P.J.	2.2

Grip Joint for CTS and PEP is available. Add "-G" to the catalog number.

◆ Quick Joint can be ordered by adding "-Q" to the catalog number.

Note: Insert Stiffeners are listed on page 7 of this section.

▶ Ultra-Tite available. Add "-U-AWT" to the catalog number (consists of components assembled watertight).

■ Extended coupling length (4-75 for 4-3/4" and 4-875 for 4-7/8")

# Angle Meter Couplings



CATALOG NUMBER	DESCRIPTION			APPROX. WT. LBS.
<b>METER SWIVEL NUT BY FEMALE IRON PIPE THREAD</b>				
L31-13-NL	5/8" Meter	x	3/4" Female Iron Pipe	0.6
L31-23-NL	5/8"x3/4" & 3/4" Meter	x	3/4" Female Iron Pipe	0.8
L31-23D-NL (Test Valve)	5/8"x3/4" & 3/4" Meter	x	3/4" Female Iron Pipe	0.9
L31-24-NL	5/8"x3/4" & 3/4" Meter	x	1" Female Iron Pipe	0.9
L31-44-NL	1" Meter	x	1" Female Iron Pipe	1.2
<b>METER SWIVEL NUT BY FLARE COPPER</b>				
L32-13-NL	5/8" Meter	x	3/4" Flare Copper	0.8
L32-23-NL	5/8"x3/4" & 3/4" Meter	x	3/4" Flare Copper	1.0
L32-44-NL	1" Meter	x	1" Flare Copper	1.6
<b>METER SWIVEL NUT BY MALE IRON PIPE THREAD</b>				
L38-11-NL	5/8" Meter	x	1/2" Male Iron Pipe	0.4
L38-23-NL	5/8"x3/4" & 3/4" Meter	x	3/4" Male Iron Pipe	0.7
L38-24-NL	5/8"x3/4" & 3/4" Meter	x	1" Male Iron Pipe	0.7
L38-44-NL	1" Meter	x	1" Male Iron Pipe	1.1
L38-45-AWT-NL	1" Meter	x	1-1/4" Male Iron Pipe	1.3
L38-66-NL	1-1/2" Meter	x	1-1/2" Male Iron Pipe	3.0
<b>METER SWIVEL NUT BY PACK JOINT FOR COPPER OR PLASTIC TUBING (CTS)</b>				
▶ L34-13-NL	5/8" Meter	x	3/4" CTS P.J.	0.8
◆ L34-23-NL	5/8"x3/4" & 3/4" Meter	x	3/4" CTS P.J.	1.0
◆ L34-44-NL	1" Meter	x	1" CTS P.J.	1.3
L34-45-NL	1" Meter	x	1-1/4" CTS P.J.	0.9
<b>METER SWIVEL NUT BY PACK JOINT FOR PE PIPE</b>				
▶ L36-23-NL	5/8"x3/4" & 3/4" Meter	x	3/4" PE Pipe P.J.	1.1
▶ L36-44-NL	1" Meter	x	1" PE Pipe P.J.	1.9

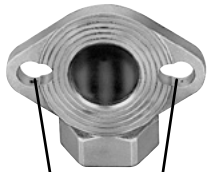
Grip Joint for CTS and PEP is available. Add "-G" to the catalog number.

◆ Quick Joint can be ordered by adding "-Q" to the catalog number

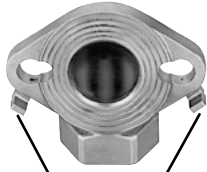
▶ Ultra-Tite available. Add "-U-AWT" to the catalog number (consists of components assembled watertight).

# Flanged Meter Couplings

## Flanged Ells for 1-1/2" and 2" meters



2" Flanges have slotted bolt holes to fit 1-1/2" meters



Optional Support Brackets (add "-MSB" to catalog number)

CATALOG NUMBER	DESCRIPTION		APPROX. WT. LBS.
<b>METER FLANGE BY FEMALE IRON PIPE THREAD</b>			
LF31-66-NL	1-1/2" Meter Flange	x 1-1/2" Female Iron Pipe	3.7
LF31-67-NL	1-1/2" Meter Flange	x 2" Female Iron Pipe	4.2
LF31-77-NL	1-1/2" & 2" Meter Flange	x 2" Female Iron Pipe	4.6
<b>METER FLANGE BY FLARE COPPER</b>			
LF32-66-NL	1-1/2" Meter Flange	x 1-1/2" Flare Copper	5.1
LF32-67-NL	1-1/2" Meter Flange	x 2" Flare Copper	6.8
LF32-77-NL	1-1/2" & 2" Meter Flange	x 2" Flare Copper	7.5
<b>METER FLANGE BY PACK JOINT FOR COPPER OR PLASTIC TUBING (CTS)</b>			
LF34-66-NL	1-1/2" Meter Flange	x 1-1/2" CTS P.J.	4.3
LF34-77-NL	1-1/2" & 2" Meter Flange	x 2" CTS P.J.	6.2

Grip Joint for CTS is available. Add "-G" to the catalog number.

For meter support brackets, two per flange, add "-MSB" to catalog number.

# Lok-Pak Meter Couplings

## Lok-Pak Meter Couplings for Flanged Meters

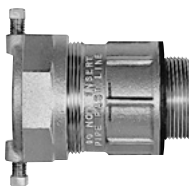


CATALOG NUMBER	DESCRIPTION		APPROX. WT. LBS.
<b>METER FLANGE BY PACK JOINT FOR COPPER OR PLASTIC TUBING (CTS)</b>			
CF34-66-NL	1-1/2" Meter Flange	x 1-1/2" CTS P.J.	3.7
CF34-77-NL	2" Meter Flange	x 2" CTS P.J.	4.8
<b>METER FLANGE BY PACK JOINT FOR IRON PIPE</b>			
CF35-66-NL	1-1/2" Meter Flange	x 1-1/2" Iron Pipe P.J.	3.6
CF35-77-NL	2" Meter Flange	x 2" Iron Pipe P.J.	5.1
<b>METER FLANGE BY PACK JOINT FOR PVC PIPE</b>			
CF37-66-NL	1-1/2" Meter Flange	x 1-1/2" PVC Pipe P.J.	4.0
CF37-77-NL	2" Meter Flange	x 2" PVC Pipe P.J.	6.0

Grip Joint for CTS is available. Add "-G" to the catalog number.

For Meter Support Brackets, two per flange, add "-MSB" to catalog number.

## Lok-Pak Meter Couplings for Tapped Meters



CATALOG NUMBER	DESCRIPTION		APPROX. WT. LBS.
<b>CONNECTION FOR TAPPED METER BY PACK JOINT FOR COPPER OR PLASTIC TUBING (CTS)</b>			
CT34-66-NL	1-1/2" Tapped Meter Connection	x 1-1/2" CTS P.J.	2.1
CT34-77-NL	2" Tapped Meter Connection	x 2" CTS P.J.	3.4
<b>CONNECTION FOR TAPPED METER BY PACK JOINT FOR IRON PIPE</b>			
CT35-66-NL	1-1/2" Tapped Meter Connection	x 1-1/2" Iron Pipe P.J.	2.2
CT35-77-NL	2" Tapped Meter Connection	x 2" Iron Pipe P.J.	3.3

Grip Joint for CTS only is available. Add "-G" to the catalog number.

Gaskets are furnished with all meter couplings, flat drop-in gaskets for flanged meters, flat ring gaskets for tapped meters.

Steel bolts and nuts (5/8" x 2-1/2", zinc plated) for attaching 1-1/2" & 2" flanges and flanged ell are sold separately and are supplied in pairs. (Cat. No. PSB)

# Meter Flanges



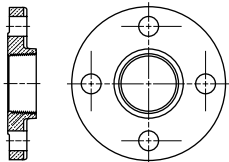
CF33-66S-2-125-NL



Female Iron Pipe



Male Iron Pipe



RF-21-NL Flange

CATALOG NUMBER	DESCRIPTION			APPROX. WT. LBS.
CF31-66-NL	1-1/2" Meter Flange	x	1-1/2" Female Iron Pipe Thread	2.2
CF31-67-NL	1-1/2" Meter Flange	x	2" Female Iron Pipe Thread	1.9
+ CF31-77-NL	2" Meter Flange	x	2" Female Iron Pipe Thread	2.8
CF31-78-NL	2" Meter Flange	x	2-1/2" Female Iron Pipe Thread	3.2
CF33-66S-2-125-NL	1-1/2" Meter Flange	x	1-1/2" Meter Swivel Nut	7.0
CF33-77S-2-25-NL	2" Meter Flange	x	2" Meter Swivel Nut	8.5
* CF38-66-2-NL	1-1/2" Meter Flange	x	1-1/2" Male Iron Pipe Thread	2.4
+ CF38-77-1-937-NL	2" Meter Flange	x	2" Male Iron Pipe Thread	3.2
+ CF38-77-2-125-NL	2" Meter Flange	x	2" Male Iron Pipe Thread	3.2

\* Standard length

+ Slotted bolt holes are available on 2" meter flanges to allow 1-1/2" meter installations.

For meter support brackets, two per flange, add "-MSB" to the catalog number.

**Note:** Drop-in rubber gaskets are included with all 1-1/2" and 2" meter flanges and flanged ells. Flange couplings are not supplied with bolts. Steel bolts and nuts (5/8" x 2-1/2", zinc plated) for attaching 1-1/2" & 2" flanges and flanged ells are sold separately and are supplied in pairs. (Cat. No. **PSB**)

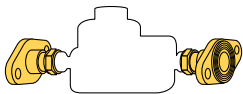
## Four Bolt Round Flange

CATALOG NUMBER	DESCRIPTION			APPROX. WT. LBS.
RF-21-NL	2" 4-Bolt Meter Flange	x	2" Female Iron Pipe Thread	4.4

# Meter Adapters



A47-NL Adapter



Adapt from 1" to 2" meter with A47-NL Adapter



Adapt from 1" to 5/8" meter with A14-NL Adapter

CATALOG NUMBER	DESCRIPTION - USAGE	APPROX. WT. LBS.
<b>ADAPTER RINGS TO BUSH METER SPUDS (NO CHANGE IN METER LENGTH)</b>		
□ A12S	Pair short adapter rings to bush 5/8" meter spuds to 5/8"x3/4" meter spud size	0.1
□ A12M	Pair medium adapter rings to bush 5/8" meter spuds to 5/8"x3/4" meter spud size	0.1
□ A12L	Pair long adapter rings to bush 5/8" meter spuds to 5/8"x3/4" meter spud size	0.2
□ A34S	Pair short adapter rings to bush 3/4" meter spuds to 1" meter spud size	0.3
□ A45	Pair adapter rings to bush 1" meter spuds to 1-1/4" meter spud size	0.2
<b>ADAPTERS TO CHANGE METER SPUD SIZE AND/OR LENGTH</b>		
* A13-NL	Pair adapters to change 5/8" meter to 3/4" meter spud size and length	0.5
* A14-NL	Pair adapters to change 5/8" meter to 1" meter spud size and length	0.8
* A21-NL	One adapter to change 5/8"x3/4" and 3/4" to 5/8" meter spud size	0.3
* A23-NL	One adapter to change 5/8"x3/4" meter to 3/4" meter length	0.4
* A24-NL	Pair adapters to change 5/8"x3/4" meter to 1" spud size and length	1.1
* A34-NL	Pair adapters to change 3/4" meter to 1" meter spud size and length	0.8
* A44-NL	One adapter to change 3/4"x1" meter to 1" meter length	0.8
* A46-NL	Pair adapters to change 1" meter to 1-1/2" flanged meter size and length	4.0
* A47-NL	Pair adapters to change 1" meter to 2" flanged meter size and length	7.1
A67-NL	Pair adapters to change 1-1/2" flanged meter to 2" flanged meter size and length (eight special length bolts included)	8.7
* A77-15-25-NL	Pair adapters to change 2" meter 17" length to 2" meter 15-1/4" length	7.2
* TA46-NL	Pair adapters to change 1" meter to 1-1/2" tapped meter size and length	1.5
* TA47-NL	Pair adapters to change 1" meter to 2" tapped meter size and length	3.0

□ Brass components that **do not** come in contact with potable water shall be cast of UNS C83600 85-5-5-5 and conform to AWWA Standard C800 (ASTM B62 and ASTM B584).

\* Gasket included.

**Note:** Adapter numbers A21-NL, A23-NL and A44-NL extend the meter length only and therefore only one per meter is required. All other adapters are sold in pairs; the part number and weight reflects a pair.

# Meter Idlers



For 5/8" x 3/4" through 1" meters (plastic)



For 5/8" through 1" meters

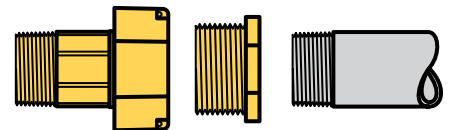
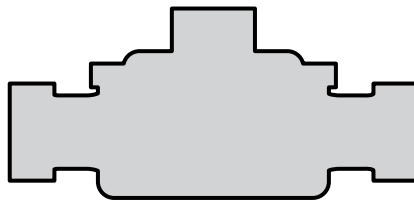


For 1-1/2" through 2" meters

CATALOG NUMBER	DESCRIPTION	APPROX. WT. LBS.
IDLER-1-NL	Replaces 5/8" Meter	0.5
IDLER-2-NL	Replaces 5/8"x3/4" Meter	0.8
IDLER-2P	Replaces 5/8"x3/4" Meter (plastic)	0.2
IDLER-3-NL	Replaces 3/4" Meter	1.0
IDLER-3P	Replaces 3/4" Meter (plastic)	0.3
IDLER-4-NL	Replaces 1" Meter	1.5
IDLER-4P	Replaces 1" Meter (plastic)	0.4
IDLER-6-NL	Replaces 1-1/2" Flanged Meter	6.0
IDLER-7-NL	Replaces 2" Flanged Meter	8.5

**Note:** Steel bolts and nuts (5/8" x 2-1/2", zinc plated) for attaching 1-1/2" and 2" Flange Lok-Pak couplings, adapters & idlers, must be ordered separately and are supplied in pairs. (Cat. No. **PSB**)

# Meter Coupling Bushings



CATALOG NUMBER	DESCRIPTION	APPROX. WT. LBS.
BBIM-33-NL	3/4" Female Iron Pipe Thread x 3/4" Male Meter Thread	0.2
BBIM-34-NL	3/4" Female Iron Pipe Thread x 1" Male Meter Thread	0.5
BBIM-44-NL	1" Female Iron Pipe Thread x 1" Male Meter Thread	0.4
BBIM-66-NL	1-1/2" Female Iron Pipe Thread x 1-1/2" Meter Spud	1.0
BBIM-77-NL	2" Female Iron Pipe Thread x 2" Meter Spud	1.4

**Example:** The male iron pipe thread end of a C38-66-2-875-NL threads into an 1-1/2" tapped meter. The female iron pipe thread of a BBIM-66-NL will thread onto the service line. This allows a swivel connection between the swivel nut on the C38-66-2-875-NL and the male meter thread on the BBIM-66-NL.

# "U" Branch Pieces

(7-1/2" Standard Spacing)  
(6-1/2", 12-1/2" or 14" Spacing Optional)



CATALOG NUMBER	DESCRIPTION		APPROX. WEIGHT LBS.						
			6-1/2" SPACING	7-1/2" STD SPACING	9" SPACING	12-1/2" SPACING	14" SPACING	18" SPACING	
<b>"U" BRANCH PIECES</b>									
U11-43-spacing-NL	1" Female Iron Pipe	x	Two 3/4" Female Iron Pipe Outlets	2.2	2.3	N/A	2.4	N/A	N/A
U11-43-18-AWT-NL	1" Female Iron Pipe	x	Two 3/4" Female Iron Pipe Outlets	N/A	N/A	N/A	N/A	N/A	3.4
U11-44-18-NL	1" Female Iron Pipe	x	Two 1" Female Iron Pipe Outlets	N/A	N/A	N/A	N/A	N/A	4.0
U18-33-spacing-NL	3/4" Female Iron Pipe	x	Two 3/4" Male Iron Pipe Outlets	1.8	1.9	N/A	N/A	N/A	N/A
U18-43-spacing-NL	1" Female Iron Pipe	x	Two 3/4" Male Iron Pipe Outlets	1.6	1.8	N/A	2.8	2.9	N/A
U18-44-14-NL	1" Female Iron Pipe	x	Two 1" Male Iron Pipe Outlets	N/A	N/A	N/A	N/A	3.1	N/A
U18-64-9-NL	1-1/2" Female Iron Pipe	x	Two 1" Male Iron Pipe Outlets	N/A	N/A	3.6	N/A	N/A	N/A
U21-33-spacing-NL	3/4" Flare Copper	x	Two 3/4" Female Iron Pipe Outlets	2.4	2.5	N/A	N/A	N/A	N/A
U21-43-spacing-NL	1" Flare Copper	x	Two 3/4" Female Iron Pipe Outlets	2.1	2.8	N/A	3.5	3.5	N/A
U28-33-spacing-NL	3/4" Flare Copper	x	Two 3/4" Male Iron Pipe Outlets	2.0	2.1	N/A	N/A	N/A	N/A
U28-43-spacing-NL	1" Flare Copper	x	Two 3/4" Male Iron Pipe Outlets	2.1	2.2	N/A	3.4	3.5	N/A
U28-64-9-NL	1-1/2" Flare Copper	x	Two 1" Male Iron Pipe Outlets	N/A	N/A	4.6	N/A	N/A	N/A
U88-33-spacing-NL	3/4" Male Iron Pipe	x	Two 3/4" Male Iron Pipe Outlets	1.5	1.8	N/A	N/A	3.2	N/A
U88-43-spacing-NL	1" Male Iron Pipe	x	Two 3/4" Male Iron Pipe Outlets	2.0	1.7	N/A	N/A	2.8	N/A
U88-64-9-NL	1-1/2" Male Iron Pipe	x	Two 1" Male Iron Pipe Outlets	N/A	N/A	3.0	N/A	N/A	N/A
<b>"U" BRANCH PIECES WITH PACK JOINT INLETS FOR COPPER OR PLASTIC TUBING (CTS)</b>									
▶ U41-43-spacing-NL	1" CTS P.J.	x	Two 3/4" Female Iron Pipe Outlets	2.1	2.4	N/A	N/A	N/A	N/A
▶ U48-33-spacing-NL	3/4" CTS P.J.	x	Two 3/4" Male Iron Pipe Outlets	1.8	2.1	N/A	N/A	N/A	N/A
◆ U48-43-spacing-NL	1" CTS P.J.	x	Two 3/4" Male Iron Pipe Outlets	*1.8	◆1.9	N/A	2.9	◆3.1	N/A
U48-63-spacing-NL	1-1/2" CTS P.J.	x	Two 3/4" Male Iron Pipe Outlets	N/A	3.2	N/A	N/A	N/A	N/A
◆ U48-64-9-NL	1-1/2" CTS P.J.	x	Two 1" Male Iron Pipe Outlets	N/A	N/A	◆4.0	N/A	N/A	N/A
<b>"U" BRANCH PIECES WITH PACK JOINT INLET FOR PE PIPE</b>									
▶ U68-33-spacing-NL	3/4" PE Pipe P.J.	x	Two 3/4" Male Iron Pipe Outlets	2.0	2.1	N/A	N/A	N/A	N/A
▶ U68-43-spacing-NL	1" PE Pipe P.J.	x	Two 3/4" Male Iron Pipe Outlets	2.0	2.7	N/A	N/A	3.1	N/A
U68-53-NL	1-1/4" PE Pipe P.J.	x	Two 3/4" Male Iron Pipe Outlets	N/A	3.0	N/A	N/A	N/A	N/A

Grip Joint for CTS and PEP (3/4" & 1") is available. Add "-G" to the catalog number.

◆ Quick Joint can be ordered by adding "-Q" to the catalog number.

Note: To order, use the catalog number plus the desired spacing; 6-1/2", 7-1/2", 9", 12-1/2" or 14" as shown available in the table above.  
Example: U21-43-65-NL is a "U" branch with a 1" flare inlet and two 3/4" FIP outlets with a 6-1/2" spacing between the outlets.

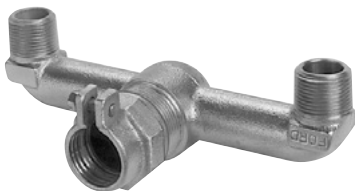
**A 7-1/2" spacing will be provided unless otherwise specified**

▶ Ultra-Tite available. Add "-U-AWT" to the end of the catalog number (consists of components assembled watertight).

\* Ultra-Tite available. Add "-U" to the end of the catalog number.

# Angle "U" Branch Pieces

(6-1/2" Spacing)



CATALOG NUMBER	DESCRIPTION		APPROX. WT. LBS.
<b>ANGLE "U" BRANCH PIECES - 6-1/2" SPACING ONLY</b>			
UA11-43-65-NL	1" Female Iron Pipe	x Two 3/4" Female Iron Pipe Outlets	2.0
UA18-43-65-NL	1" Female Iron Pipe	x Two 3/4" Male Iron Pipe Outlets	1.8
UA21-43-65-NL	1" Flare Copper	x Two 3/4" Female Iron Pipe Outlets	2.5
UA28-43-65-NL	1" Flare Copper	x Two 3/4" Male Iron Pipe Outlets	2.2
<b>ANGLE "U" BRANCH PIECES WITH PACK JOINT INLET FOR COPPER OR PLASTIC TUBING (CTS)</b>			
▶ UA41-43-65-NL	1" CTS P.J.	x Two 3/4" Female Iron Pipe Outlets	2.2
▶ UA48-43-65-NL	1" CTS P.J.	x Two 3/4" Male Iron Pipe Outlets	2.0

Grip Joint for CTS is available. Add "-G" to the catalog number.

Note: All angle "U" branch pieces have 6-1/2" spacing.

▶ Ultra-Tite available. Add "-U-AWT" to the end of the catalog number (consists of components assembled watertight).



# Section H

# Ford Water Meter Couplings and Accessories

## Warranty

All merchandise is warranted to be free from defects in material and factory workmanship for one year from date of shipment from our factory. We will provide, free of charge, new products in equal quantities for any that prove defective within one year from date of shipment from our factory. Manufacturer shall not be liable for any loss, damage, or injury, direct or consequential, arising out of the use of or the inability to use the product. Before using, user shall determine the suitability of the product for user's intended use and user assumes all risk and liability whatever in connection therewith. No claims for labor or consequential damage will be allowed. The foregoing may not be changed except by agreement signed by an officer of the manufacturer.

No other warranties are applicable or may be implied, including the implied warranty of merchantability and the implied warranty of fitness for particular purpose and any warranty relating to infringement or the like, all of which are disclaimed.

**Parties responsible for monitoring and maintaining proper water system design must exercise full responsibility in understanding and upholding the full intent and scope of applicable lead laws.**

### **Please Note:**

Consult The Ford Meter Box Company, Inc. website ([www.fordmeterbox.com](http://www.fordmeterbox.com)) for the most recent catalog information. The Ford Meter Box Company considers the information in this catalog to be correct at the time of publication. Items and option availability, including specifications, are subject to change without notice. Please verify that your product information is current.



**The Ford Meter Box Co., Inc.** 775 Manchester Avenue, P.O. Box 443, Wabash, Indiana, USA 46992-0443  
Telephone: 260/563-3171 FAX: 1-800-826-3487 Overseas FAX: 260/563-0167 [www.fordmeterbox.com](http://www.fordmeterbox.com)