

MVB®

Engineered for reliability and long-term performance.

500 MBTUH - 4 MMBTUH

- H** 84-86.2% Efficiency¹
- WH** 85-87% Efficiency²
- P** 83-83.3% Efficiency³



Click icon or view standalone page to learn more.



MID EFFICIENCY



Installation Flexibility

- Compact vertical design fits through a standard doorway, perfect for small spaces and retrofit projects
- Direct vent capable with multiple venting configurations for versatility, Cat I and Cat IV models available
- High voltage wiring center located on the rear of the boiler for easy access

7" color touchscreen display

Low voltage wiring terminal (not shown)

Status light and on/off switch



Robust Construction

- Indoor/outdoor design with outdoor air intake cover standard
- Heavy gauge galvanized steel weatherproof jacket with UV-resistant powder coat finish
- Dependable non-condensing copper or cupronickel finned water tube heat exchanger



Maximum Performance

- Reliable, efficient performance reduces operating costs and enhances heating capability
- Can be equipped with Cold Water Start or Cold Water Run systems, which protect against harmful condensation



Intelligent Controls

- VERSA IC controls with LCD touchscreen display
- Raymote access
- Cascade up to 8 boilers in parallel or sequential modulation modes for optimized performance

Optional Features

- Cupronickel heat exchanger
- Cold Water Protection
- BACnet gateway
- CSD-1 package
- Fixed speed pump

Applicable for heating in multi-family housing, hospitals, schools, and more.

¹Cat. I vent 84%. Cat. IV vent 85%-86.2%.

²Cat. I vent 83-83.3%. Cat. IV vent 85%-87%.

³Pool sizes vary by model.

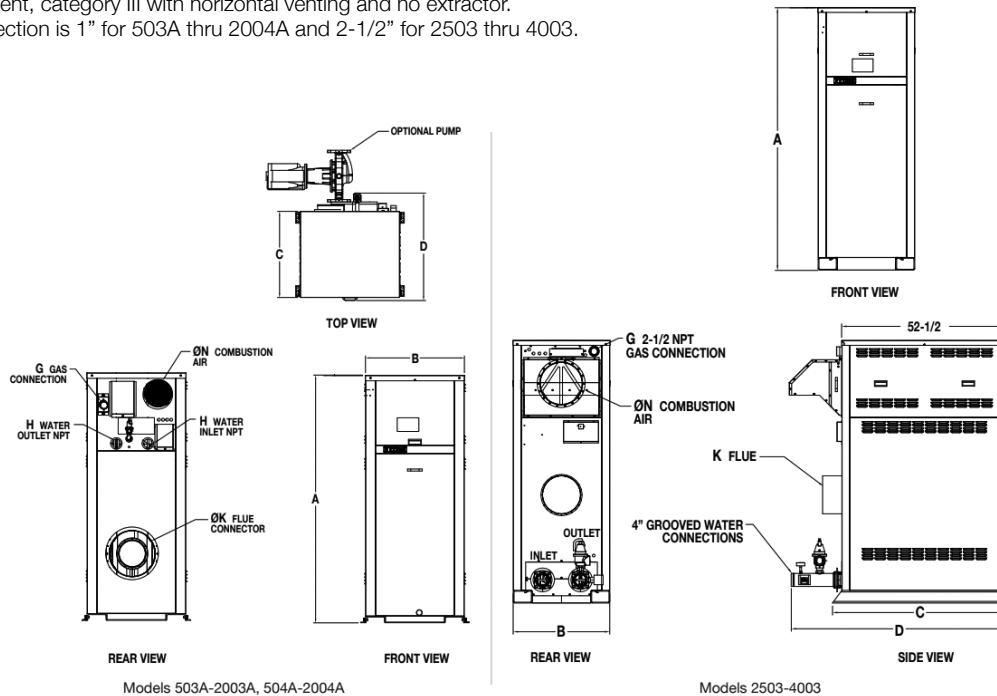


MVB - Type H & WH Models 503/4A - 4003

Model	MBTUH (kW/h)				Turndown (H)	Thermal Efficiency % (H)	Thermal Efficiency % (WH)	Dimensions - in. (mm)				Dimensions - in.			
	Input (H)	Input (WH)	Output (H)	Output (WH)				A Height	B Width	C Base Depth	D Overall Depth	G (Nat) NPT**	H Water	K Flue Ø	N C/A Ø
504A	500 (146.5)		420 (123.1)	415 (121.6)	1.7 to 1	84	83	43 1/4 (1098.6)	30 (762.0)	26 (660.4)	32 (812.8)	1	2	8	6
754A*	750 (219.8)		630 (184.6)	623 (182.5)		84	83	49 (1244.6)	30 (762.0)	26 (660.4)	32 (812.8)	1	2	10	6
1104A*	1100 (322.3)	1045 (306.2)	924 (270.7)	870 (254.9)		84	83.3	55 (1397.0)	30 (762.0)	26 (660.4)	32 (812.8)	1 1/4	2 1/2	10	6
1504A*	1500 (439.5)	1425 (417.5)	1260 (369.2)	1187 (347.8)		84	84	61 (1549.4)	30 (762.0)	26 (660.4)	32 (812.8)	1 1/4	2 1/2	12	8
2004A*	1999 (585.7)	1900 (556.7)	1679 (491.9)	1583 (463.8)		84	84	75 (1905.0)	30 (762.0)	26 (660.4)	32 (812.8)	2	2 1/2	14	8
503A	500 (146.5)		431 (126.3)	435 (127.5)	7 to 1	86.2	86.2	43 (1092.2)	30 (762.0)	26 (660.4)	32 (812.8)	1	2	6	6
753A	750 (219.8)		647 (189.6)	653 (191.3)		86.2	86.2	49 (1244.6)	30 (762.0)	26 (660.4)	32 (812.8)	1	2	6	6
1003A	999 (292.7)		861 (252.3)	869 (254.8)		86.2	86.2	55 (1397.0)	30 (762.0)	26 (660.4)	32 (812.8)	1 1/4	2 1/2	6	6
1253A	1250 (366.3)		1078 (315.9)	1088 (318.8)		86.2	86.2	61 (1549.4)	30 (762.0)	26 (660.4)	32 (812.8)	1 1/4	2 1/2	8	8
1503A	1500 (439.5)		1293 (378.8)	1305 (382.4)		86.2	86.2	67 (1701.8)	30 (762.0)	26 (660.4)	32 (812.8)	1 1/4	2 1/2	8	8
1753A	1750 (512.8)		1508 (441.8)	1523 (446.2)		86.2	87	75 (1905.0)	30 (762.0)	26 (660.4)	32 (812.8)	2	2 1/2	8	8
2003A	1999 (585.7)		1723 (504.8)	1739 (509.5)		86.2	87	81 (2057.4)	30 (762.0)	26 (660.4)	32 (812.8)	2	2 1/2	8	8
2503	2501 (732.8)		2126 (622.9)			85	85	68 1/4 (1733.6)	30 7/8 (784.2)	55 1/2 (1409.7)	68 1/2 (1739.9)	2 1/2	4	10	10
3003	3000 (879.0)		2550 (747.2)			85	85	73 1/4 (1860.6)	30 7/8 (784.2)	55 1/2 (1409.7)	68 1/2 (1739.9)	2 1/2	4	10	10
3503	3500 (1025.5)		2975 (871.7)			85	85	78 1/4 (1987.6)	30 7/8 (784.2)	55 1/2 (1409.7)	68 1/2 (1739.9)	2 1/2	4	12	12
4003	4000 (1172.0)		3400 (996.2)		85	85	83 1/4 (2114.6)	30 7/8 (784.2)	55 1/2 (1409.7)	68 1/2 (1739.9)	2 1/2	4	12	12	

*Category I with vertical vent, category III with horizontal venting and no extractor.

**For Propane, gas connection is 1" for 503A thru 2004A and 2-1/2" for 2503 thru 4003.



Models 503A-2003A, 504A-2004A

Models 2503-4003

Learn more about
MVB boilers at
Raypak.com

Learn more about
MVB water heaters
at Raypak.com

Learn more about
MVB pool heaters
at Raypak.com