

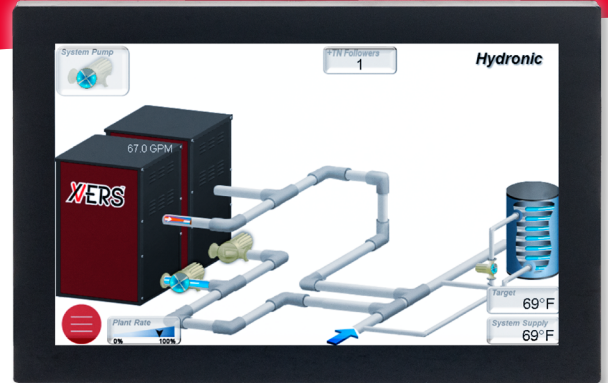
# VERSA IC®

Get more out of your boilers and water heaters.



## Built-In Intelligence

- Modulating temperature control, safety limits, and ignition programming combined into one user-friendly integrated control platform
- Self-learning features prevent equipment damage
- Easy to set up, understand, and use – as close to plug and play as possible
- Remotely accessible through Raymote for instant visibility to system vitals



## Intuitive Diagnostics

- High-definition touchscreen with Glove Sense™ technology and LCD display with touchpad make it easy to understand, navigate, and diagnose units
- Touchscreen features comprehensive 3D graphics with fault location
- Access crucial product information through the touchscreen display's built-in document viewer

### Available on:

- XVers Powered by KÖR
- XVers
- XVers L
- XFIIRE
- XTherm
- MVB
- XPak FT
- Hi Delta



## Communication Flexibility

- Communicate directly with VERSA IC through Building Management Systems (BMS) and/or the Raymote platform
- Monitor and control via standard, built in Modbus RTU port through any of Raypak's BMS protocol converters



## Cascade Up to 8 Units

- VERSA IC universal controller enables versatile system design to provide maximum performance
- Cascade up to 8 units in parallel or sequential modulation modes with cascade interstage delay settings<sup>1</sup>



Learn more about  
**VERSA IC** at  
**Raypak.com**

<sup>1</sup>Parallel or sequential modulation modes only available for H models.



## Uptime Dependability

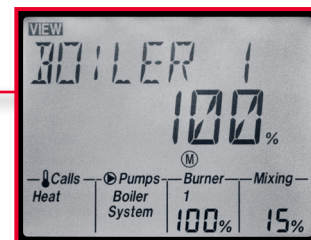
Raypak's VERSA IC reduces downtime through many system safeties and sensors that continuously monitor the health of the unit and its environment:

- Freeze protection
- Delta T and water flow sensor (XVers)
- Cold Water Protection built-in (user selectable for pump or motorized valve)
- Up to 8 sensors:
  - Inlet sensor
  - Outlet sensor
  - System sensor
  - DHW indirect sensor
  - Indirect supply/pool sensor
  - Vent temperature sensor
  - Spare sensor point for user optional BMS use
  - Outdoor reset sensor (optional)
- Burner status provided via dry contact or BMS protocol
- Alarm dry contact
  - Audible alarm optional
  - Selectable cascade alarm sharing



## Touchscreen Display

Up to 7 inch high definition touchscreen displays on XVers, XTherm and MVB. Up to 4.3 inch high definition touchscreen on XVers L and XFIIRE. Includes Glove Sense™ technology with liquid protection and rugged ballistic grade glass.



## LCD Display

3.5 inch LCD display with touch pad on all XPakFT and Hi Delta (C model sizes). High temperature capacity will stand up to harsh conditions.