

Tender Text



Product photo could vary from the actual product

Product No.: [98924049](#)

45S50-9

Multi-stage submersible pump for raw water supply, groundwater lowering and pressure boosting. The pump is suitable for pumping clean, thin, non-aggressive liquids without solid particles or fibers.

The pump is made entirely of Stainless steel DIN W.-Nr. EN 1.4301 and suitable for horizontal and vertical installation.

The pump is fitted with a built-in non-return valve.

type with a sand shield, liquid-lubricated bearings and pressure-equalizing diaphragm.

Liquid:

Pumped liquid: Water
Maximum liquid temperature: 104 °F
Liquid temperature during operation: 68 °F
Density: 62.29 lb/ft³

Technical:

Speed for pump data: 3450 rpm
Actual calculated flow: 47.1 US gpm
Resulting head of the pump: 217.6 ft
Curve tolerance: ISO9906:2012 3B

Materials:

Pump: Stainless steel
EN 1.4301
AISI 304
Impeller: Stainless steel
EN 1.4301
AISI 304

Installation:

Pump outlet: 2"NPT
Motor diameter: 4 inch

Electrical data:

Rated power - P2: 5 HP

Others:

ErP status: EuP Standalone/Prod.
Net weight: 19 lb
Gross weight: 22.1 lb




Company name:

Created by:

Phone:

Date: 2/22/2018

Shipping volume: 0.39 ft³

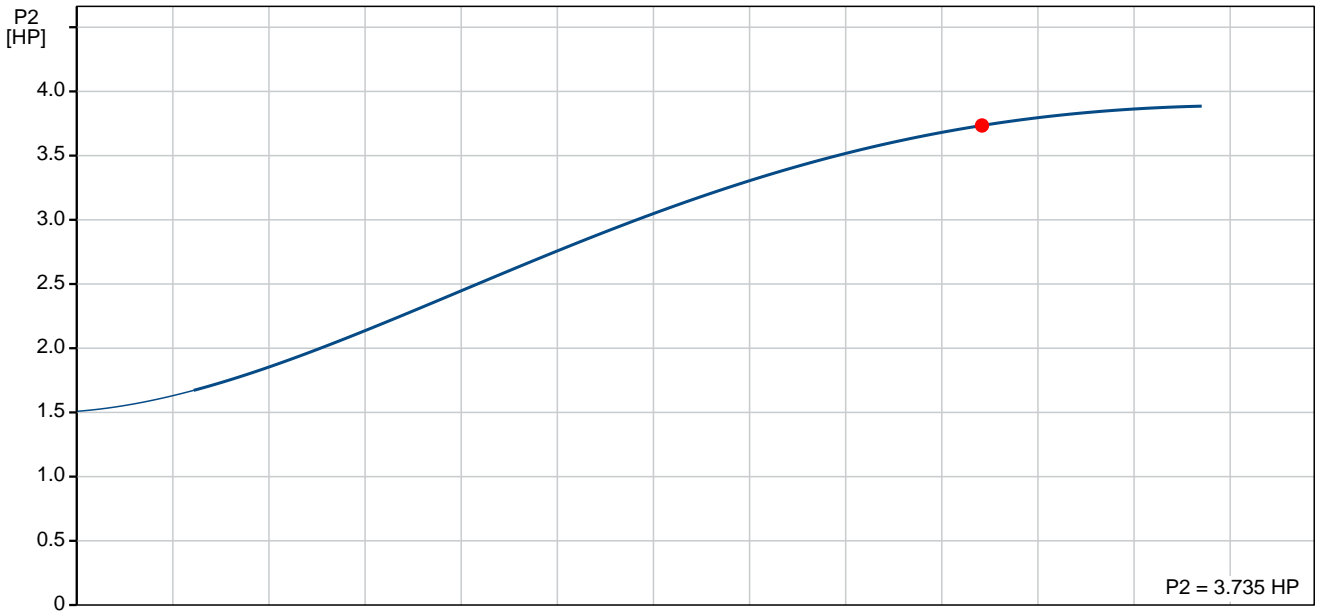
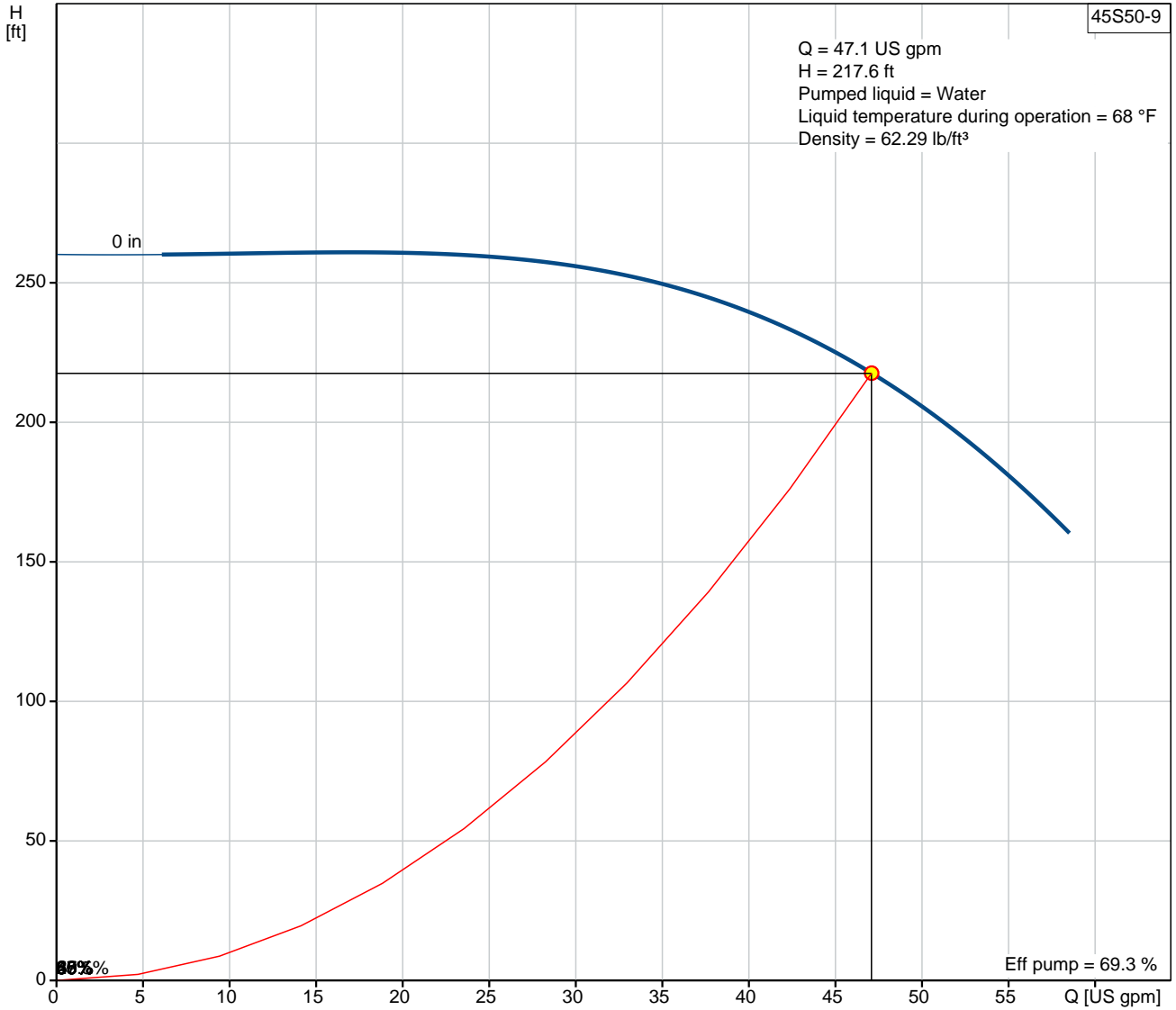
| Position | Count | Description |
|----------|-------|--|
| | 1 | <p>45S50-9</p>  <p style="text-align: center;">Product photo could vary from the actual product</p> <p>Product No.: 98924049 Multi-stage submersible pump for raw water supply, groundwater lowering and pressure boosting. The pump is suitable for pumping clean, thin, non-aggressive liquids without solid particles or fibers.</p> <p>The pump is made entirely of Stainless steel DIN W.-Nr. EN 1.4301 and suitable for horizontal and vertical installation. The pump is fitted with a built-in non-return valve.</p> <p>type with a sand shield, liquid-lubricated bearings and pressure-equalizing diaphragm.</p> <p>Liquid: Pumped liquid: Water Maximum liquid temperature: 104 °F Liquid temperature during operation: 68 °F Density: 62.29 lb/ft³</p> <p>Technical: Speed for pump data: 3450 rpm Actual calculated flow: 47.1 US gpm Resulting head of the pump: 217.6 ft Curve tolerance: ISO9906:2012 3B</p> <p>Materials: Pump: Stainless steel EN 1.4301 AISI 304 Impeller: Stainless steel EN 1.4301 AISI 304</p> <p>Installation: Pump outlet: 2"NPT Motor diameter: 4 inch</p> <p>Electrical data: Rated power - P2: 5 HP</p> <p>Others: ErP status: EuP Standalone/Prod. Net weight: 19 lb Gross weight: 22.1 lb Shipping volume: 0.39 ft³</p> |



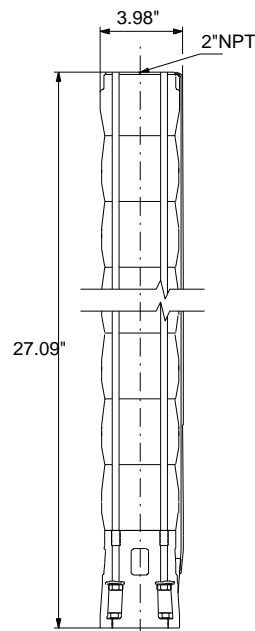
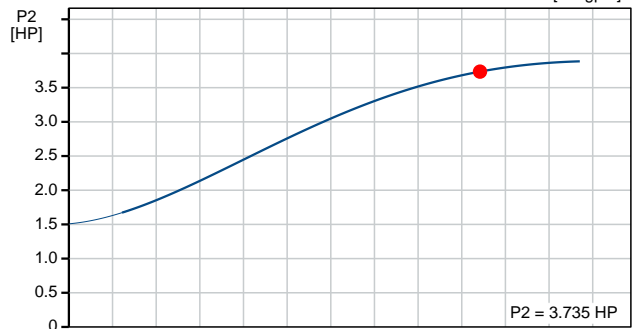
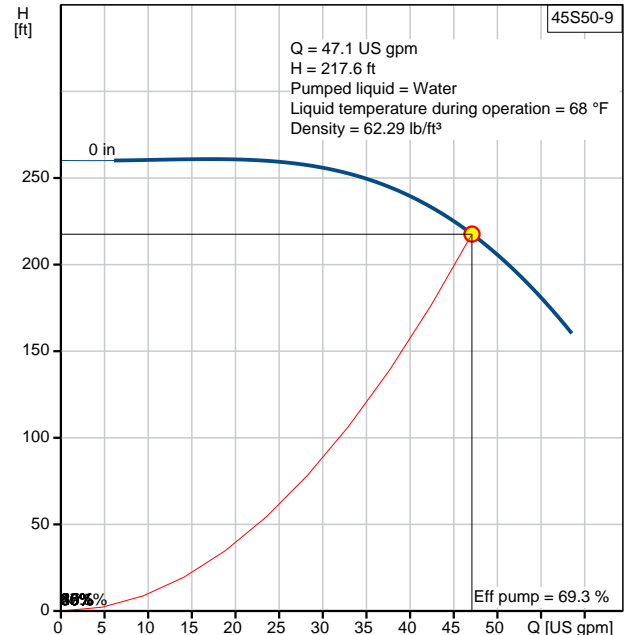
Company name:
Created by:
Phone:

Date: 2/22/2018

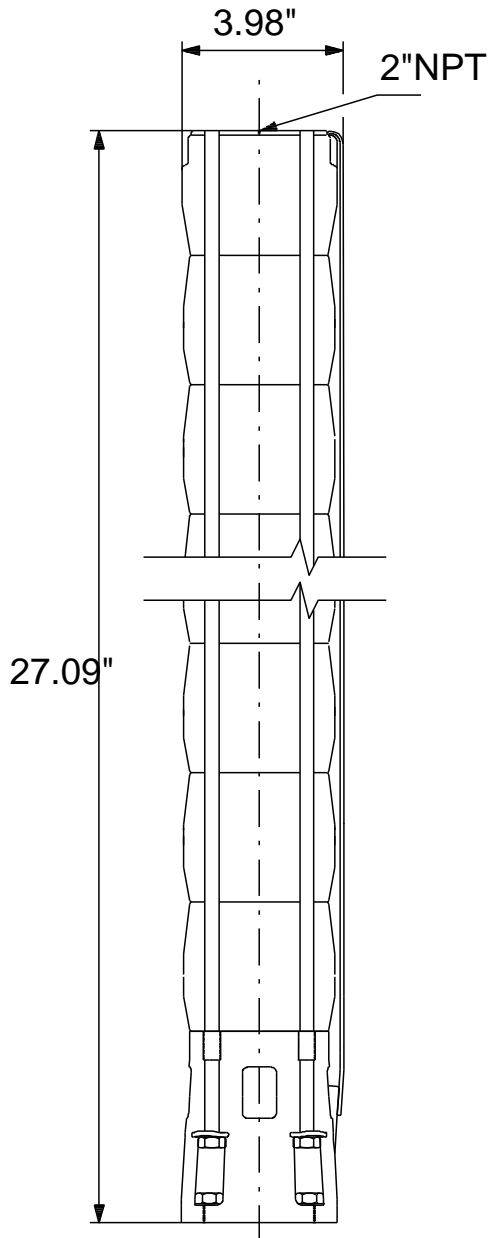
98924049 45S50-9 60 Hz



| Description | Value |
|--------------------------------------|--|
| General information: | |
| Product name: | 45S50-9 |
| Product No.: | 98924049 |
| EAN: | 5712603656120 |
| Technical: | |
| Speed for pump data: | 3450 rpm |
| Actual calculated flow: | 47.1 US gpm |
| Resulting head of the pump: | 217.6 ft |
| Stages: | 9 |
| Impeller reduc.: | NONE |
| Curve tolerance: | ISO9906:2012 3B |
| Model: | A |
| Valve: | YES |
| Materials: | |
| Pump: | Stainless steel EN 1.4301 AISI 304 |
| Impeller: | Stainless steel EN 1.4301 AISI 304 |
| Installation: | |
| Pump outlet: | 2"NPT |
| Motor diameter: | 4 inch |
| Liquid: | |
| Pumped liquid: | Water |
| Maximum liquid temperature: | 104 °F |
| Liquid temperature during operation: | 68 °F |
| Density: | 62.29 lb/ft ³ |
| Electrical data: | |
| Applic. motor: | NEMA |
| Rated power - P2: | 5 HP |
| Others: | |
| ErP status: | EuP Standalone/Prod. |
| Net weight: | 19 lb |
| Gross weight: | 22.1 lb |
| Shipping volume: | 0.39 ft ³ |



98924049 45S50-9 60 Hz



Note! All units are in [mm] unless otherwise stated.
Disclaimer: This simplified dimensional drawing does not show all details.



Company name:

Created by:

Phone:

Date: 2/22/2018

Order Data:

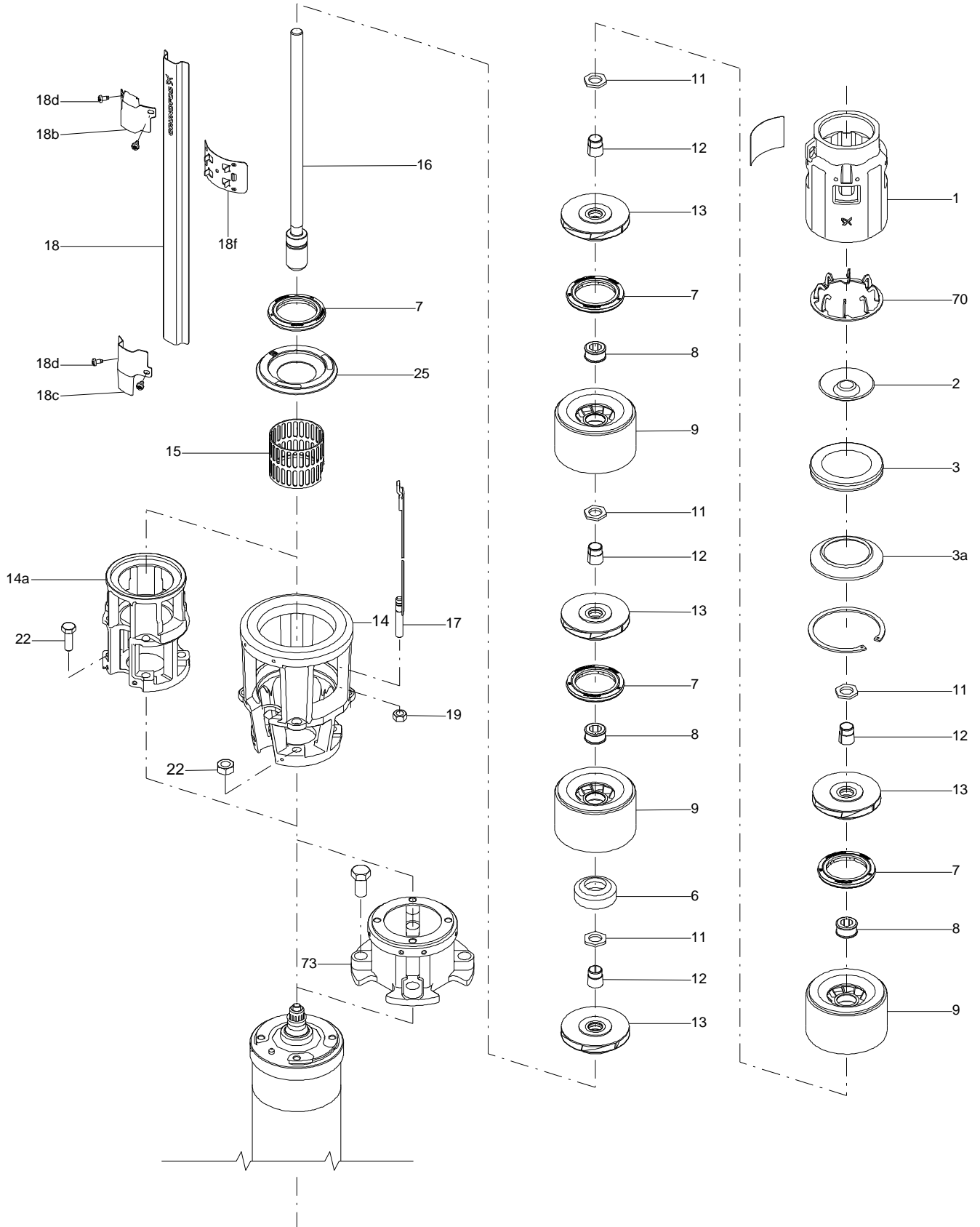
Product name: 45S50-9

Amount: 1

Product No.: 98924049

Total: Price on request

Exploded view (TM061865 for SP middle range)





Company name:

Created by:

Phone:

Date:

2/22/2018

Parts list 45S50-9, Prod number 98924049

Valid from 19.9.2014 (1438)

| Position | Description | Annotation | Classification data | Part No. | Count | Unit |
|----------|---------------------------|------------|---------------------|----------|-------|------|
| - | Shaft,cableg,strap | | | | 1 | pcs |
| 16 | Shaft cpl. | | | | 1 | |
| 17 | Strap cpl. | | | | 4 | |
| 18 | Cable guard | | | | 1 | |
| - | Stage cpl. | | | | 9 | pcs |
| 7 | Seal ring | | | | 1 | |
| 8 | Bearing | | | | 1 | |
| 9 | Chamber cpl. | | | | 1 | |
| 11 | Nut | | | | 1 | |
| 12 | Split cone | | | | 1 | |
| 13 | Impeller cpl. | | | | 1 | |
| 6 | Upthrust bearing | | | | 1 | pcs |
| 7 | Seal ring | | | | 1 | pcs |
| 14 | Suction interconnector | | | | 1 | pcs |
| 15 | Strainer | | | | 1 | pcs |
| 18b | Clamp | | | | 1 | pcs |
| 18c | Clamp | | | | 1 | pcs |
| 18d | Hex socket head cap screw | | | | 4 | pcs |
| 19 | Nut | | | | 4 | pcs |
| 25 | Retainer for seal ring | | | | 1 | pcs |