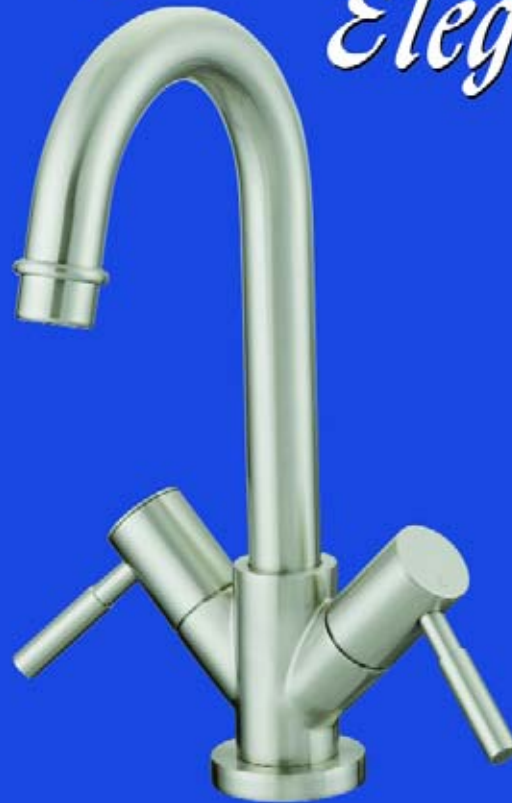




Effective November 1, 2005

*Affordable
Elegance™*



FAUCETS

& PLUMBING SPECIALTIES



2006 CATALOG & PRICE LIST

FAUCET FAMILY PRODUCT INDEX

PADOVA



KITCHEN

AE-195
see page 6



LAVATORY

AE-895
see page 15



**WIDESPREAD
LAVATORY**

AE-995
see page 15



**TUB &
SHOWER**

AE-115PBW
see page 15

CRESCENDO



KITCHEN

AE-935
see page 6



AE-945
see page 6



LAVATORY

AE-875
see page 16



**WIDESPREAD
LAVATORY**

AE-175
see page 16



**ROMAN TUB
FILLER**

AE-176
see page 16



SHOWER

AE-110PBW
see page 17

PORTIA



KITCHEN

AE-255
see page 7



AE-955
see page 7



KITCHEN

AE-925
see page 7



LAVATORY

AE-865
see page 17



SHOWER

AE-105PBW
see page 19



**ROMAN TUB
FILLER**

AE-155
see page 18



**WIDESPREAD
LAVATORY**

AE-165
see page 18



**BAR
FAUCET**

AE-325
see page 8



AE-956
see page 8

FAUCET FAMILY PRODUCT INDEX

NAPOLI



KITCHEN

AE-965
see page 8



LAVATORY

AE-835
see page 20



**BAR
FAUCET**

AE-360
see page 9

**WIDESPREAD
LAVATORY**



AE-135
see page 20



**ROMAN TUB
FILLER**

AE-136
see page 21

RAVELLO



AE-366
see page 10

KITCHEN



AE-310
see page 10



LAVATORY

AE-880
see page 24

AE-495
see page 24



**BAR
FAUCET**

AE-930
see page 10



AE-187
see page 25

**ROMAN TUB
FILLER**



**WIDESPREAD
LAVATORY**

AE-185
see page 24



BIDET FAUCET

AE-440
see page 25



AE-186
see page 25

ADDITIONAL FINISHES AVAILABLE ON SOME MODELS
BRUSHED NICKEL FINISH - OIL RUBBED BRONZE FINISH
ANTIQUE COPPER FINISH - POLISHED BRASS FINISH

FAUCET FAMILY PRODUCT INDEX

POSITANO



KITCHEN

AE-905
see page 9

**WIDESPREAD
LAVATORY**



AE-150
see page 22



**TUB &
SHOWER**



LAVATORY

AE-855
see page 21

**ROMAN TUB
FILLER**



AE-151
see page 22



AE-100PBW
see page 23

CLASSIC ELEGANCE
EURO DESIGN



KITCHEN

FT-210SEL
see page 11



LAVATORY

CT-452SEL
see page 25



**TUB &
SHOWER**



AE-251
see page 11

ROMAN TUB FILLER



RT-151
see page 27



TNS-100PBWSL
see page 29

TABLE OF CONTENTS

ITEM NAME	PAGE NUMBER
-----------	-------------

A

Aerator	54
Air Gap	67

B

Bathcock - For Clawfoot Tubs	63
Bath Accessories	19-20
Bath Drains	69
Bath Waste & Overflow	68-69

C

Closet Bends	72
Closet Flanges	71-72
Closet Spuds	70

D

Dishwasher Tail Pieces & Accessories	67
Drop Ear Elbow	62

F

Faucets

Bar	8, 9, 10, 14
Bidet	25
Drinking Water	34
Kitchen	6-14
Lavatory	15-18, 20-22, 24-28
Laundry	34
Non Metallic	35
Pressure Balanced Tub and Showers	15, 17, 19, 23, 29-30
Restaurant Quality - Heavy Duty	33
Roman Tub Fillers	16, 18, 21, 22, 25, 27
Self Closing Faucets and Valves	65
Service Sink Utility	34
Tub and Showers Wall Mount	29-32, 33
Faucet & Shower Handle Options	51-52
Faucet & Shower Stem Options	52-53
Faucet Seats & Trim	53

ITEM NAME	PAGE NUMBER
-----------	-------------

H

Hose Bibbs	64
------------	----

I

Integral Stop - Slotted	54
-------------------------	----

P

Parts and Accessories	54
Pop-Ups & Sink Drains	60-61
PVC Flexible Sink Drains	74

S

Saddle Valve	67
Shower Accessories	52
Shower Drains	61-62

Shower Heads

Hand Held	39
Accessories	40
Sunflower	36-37

Shower Stall Valve	54
Shower Valve Stem Options	53
Single Basin Faucets	63
Sink Drains	74
Sink Strainers	57-58
Slip Nuts	74
Standing Waste	69
Strainers - Replacement Inserts	59-60

Supply Hoses

Stainless Steel	55
Delta Style	55
Stainless Steel - Economy - For Sink	55
Stainless Steel - For Closet	56
Washing Machine	56
Dishwasher - With 90Degree Elbow	56

ITEM NAME	PAGE NUMBER
-----------	-------------

S (con't)

Supply Valves

Quarter Turn	
Angle	43
Straight	44
Universal Turn - 1/4 Turn	44
Pex Connectors - 1/4 Turn	45

Oval Handle - 1/4 Turn

Straight	45
Pex	45
Angle	46
Dual Valve	47

Compression

Pex Tube	47
Angle	47-48

Dual Outlets - Angle	48
Flare Outlet - Angle	49

Slip Joint Outlet

Angle	49
Straight	49

Compression - Straight	50
------------------------	----

Multi Turn - Economy Pattern

Angle	51
-------	----

T

Toilet Tank Trim	68
Traps	72-74
Tub Spouts	41-43
Twin Mix Connector	66

U

Urinal Spuds	70
--------------	----

W

Washing Machine Tee's	66
Washing Machine Valves	66
Water Mixer	62

MATCO-NORCA
MODEL #

SIZE &
DESCRIPTION

INNER
CARTON
QUANTITY

MASTER
CARTON
QUANTITY

LIST
PRICE

PADOVA



AE-195



AE KITCHEN FAUCET - TWO HANDLE - CERAMIC CARTRIDGE

AE-195	Widespread Chrome Plate Kitchen Faucet Lever Handles, Ceramic Cartridge, With Hose & Spray (ADA)	1	6	242.25
AE-195S	Same As Above With, Brushed Nickel Finish (ADA)	1	6	267.25

CRESCENDO



AE-945



AE KITCHEN FAUCET - TWO HANDLE - WASHERLESS CARTRIDGE

AE-945	8" Chrome Plate Kitchen Faucet Lever Handles, Washerless Cartridge, Less Deck Plate, With Hose & Spray (ADA)	1	6	215.44
AE-945S	Same As Above With, Brushed Nickel Finish (ADA)	1	6	240.20
AE-945AB	Same As AE-945, With Antique Copper Finish (ADA)	1	6	248.96
AE-945ORB	Same As AE-945, With Oil Rubbed Bronze Finish (ADA)	1	6	252.00



AE-935



AE-935	8" Chrome Plate Kitchen Faucet Lever Handles, Washerless Cartridge With Hose & Spray	1	6	185.22
AE-935S	Same As Above With, Brushed Nickel Finish	1	6	222.26
AE-935ORB	Same As AE-935, With Oil Rubbed Bronze Finish	1	6	228.10

PORTIA



AE-255



MATCO-NORCA
MODEL #

SIZE &
DESCRIPTION

INNER
CARTON
QUANTITY

MASTER
CARTON
QUANTITY

LIST
PRICE

AE

KITCHEN FAUCET - PULL-OUT - CERAMIC CARTRIDGE

AE-255	Pull-Out Kitchen Faucet Chrome Plate, Ceramic Disc Deck Plate Optional (ADA)	1	6	193.65
AE-255S	Same As Above With Brushed Nickel Finish (ADA)	1	6	220.35



AE-955



AE

KITCHEN FAUCET - SINGLE LEVER - CERAMIC CARTRIDGE

AE-955	Chrome Plate Kitchen Faucet, Ceramic Cartridge, Goose Neck Spout, With Spray Single Handle (ADA)	1	6	206.13
AE-955S	Same As Above With Brushed Nickel Finish (ADA)	1	6	236.14
AE-955ORB	Same As AE-955 With Oil Rubbed Bronze Finish (ADA)	1	6	238.00



AE-925



AE

KITCHEN FAUCET - TWO HANDLE - WASHERLESS CARTRIDGE

AE-925	8" Chrome Plate Kitchen Faucet Gooseneck Spout, Lever Handles, Washerless Cartridge With Hose & Spray (ADA)	1	6	91.83
AE-925S	Same As Above With, Brushed Nickel Finish (ADA)	1	6	119.07
AE-925ORB	Same As AE-925 With Oil Rubbed Bronze Finish (ADA)	1	6	132.50
AE-925KIT	Kit Converts Faucets To Two Tone, Includes Handle Inserts Aerator & Handle/Spout Base Rings In PVD Brass (ADA)	1	6	30.30



AE-925KIT

MATCO-NORCA
MODEL #

SIZE &
DESCRIPTION

INNER
CARTON
QUANTITY

MASTER
CARTON
QUANTITY

LIST
PRICE

PORTIA



AE-956

AE

BAR FAUCET - SINGLE LEVER - CERAMIC CARTRIDGE

AE-956	Chrome Plate Bar Faucet, High Arc Spout, Single Handle Ceramic Cartridge (ADA)	1	6	163.80
AE-956S	Same As Above With Brushed Nickel Finish (ADA)	1	6	187.05
AE-956ORB	Same As AE-956 With Oil Rubbed Bronze Finish (ADA)	1	6	208.80



AE-325

AE

BAR FAUCET - TWO LEVER - WASHERLESS CARTRIDGE

AE-325	8" Chrome Plate Bar Faucet 10" Spout, Lever Handles, Washerless Cartridge (ADA)	1	6	61.00
AE-325S	Same As Above With, Brushed Nickel Finish (ADA)	1	6	73.00



NAPOLI



AE-965

AE

KITCHEN FAUCET - TWO HANDLE - CERAMIC CARTRIDGE

AE-965	8" Chrome Plate Kitchen Faucet Lever Handles, Ceramic Cartridge, With Hose & Spray (ADA)	1	6	124.45
AE-965S	Same As Above With, Brushed Nickel Finish (ADA)	1	6	149.45
AE-960	Same As AE-965, Less Hose & Spray (ADA)	1	6	113.45
AE-960S	Same As Above, With Brushed Nickel Finish (ADA)	1	6	135.95



MATCO-NORCA
MODEL #

SIZE &
DESCRIPTION

INNER
CARTON
QUANTITY

MASTER
CARTON
QUANTITY

LIST
PRICE

NAPOLI

AE

BAR FAUCET - TWO LEVER - WASHERLESS CARTRIDGE



AE-360

AE-360

8" Chrome Plate Bar Faucet
10" Spout, Lever Handles,
Washerless Cartridge (ADA)

1

6

59.75

AE-360S

Same As Above With,
Brushed Nickel Finish (ADA)

1

6

71.50



POSITANO

AE

KITCHEN FAUCET - TWO HANDLE - CERAMIC CARTRIDGE



AE-905

AE-905

8" Chrome Plate Kitchen Faucet
Goose Neck Spout, Lever Handles,
Ceramic Cartridge (ADA)

1

6

73.20

AE-915

Same As Above, With Hose
& Chrome Plate Spray (ADA)

1

6

85.80

AE-905S

Same As AE-905 With
Brushed Nickel Finish (ADA)

1

6

95.92

AE-915S

Same As AE-915 With
Brushed Nickel Finish, Hose
& Brushed Nickel Spray (ADA)

1

6

108.05



AE-905B

Same As AE-905 With
Polished Brass Finish (ADA)

1

6

133.77

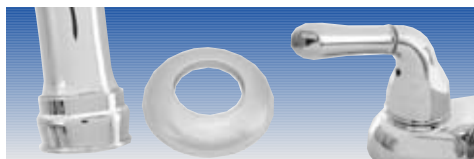
AE-915B

Same As AE-915 With
Polished Brass Finish, Hose
& Polished Brass Spray (ADA)

1

6

152.67



AE-915KIT

AE-915KIT

Kit Converts Faucets To
Two Tone, Includes Handle Inserts
Aerator & Handle/Spout
Base Rings In PVD Brass (ADA)

1

6

28.27

MATCO-NORCA
MODEL #

SIZE &
DESCRIPTION

INNER
CARTON
QUANTITY

MASTER
CARTON
QUANTITY

LIST
PRICE

RAVELLO



AE-310



AE

KITCHEN FAUCET - SINGLE LEVER - CERAMIC CARTRIDGE

AE-310	8" Chrome Plate Kitchen Faucet Single Lever, Less Spray Ceramic Cartridge (ADA)	1	6	88.60
AE-310S	Same As Above, With Brushed Nickel Finish (ADA)	1	6	111.10
AE-315	Same As AE-310, With With Hose & Spray (ADA)	1	6	99.60
AE-315S	Same As Above With, Brushed Nickel Finish (ADA)	1	6	124.60

AE

KITCHEN FAUCET - TWO HANDLE - WASHERLESS CARTRIDGE



AE-366



AE-365	8" Chrome Plate Kitchen Faucet Lever Handles, Less Spray Washerless Cartridge (ADA)	1	6	78.20
AE-365S	Same As Above With, Brushed Nickel Finish (ADA)	1	6	98.20
AE-366	8" Chrome Plate Kitchen Faucet Lever Handles, Washerless Cartridge With Hose & Spray (ADA)	1	6	89.20
AE-366S	Same As Above With, Brushed Nickel Finish (ADA)	1	6	119.20

AE

BAR FAUCET - TWO HANDLE - WASHERLESS CARTRIDGE



AE-930



AE-930	8" Chrome Plate Bar Faucet, 10" Spout, Metal Lever Handle, Washerless Cartridge (ADA)	1	12	58.75
AE-930S	Same As Above With Brushed Nickel Finish (ADA)	1	12	70.00

MATCO-NORCA
MODEL #

SIZE &
DESCRIPTION

INNER
CARTON
QUANTITY

MASTER
CARTON
QUANTITY

LIST
PRICE

CLASSIC ELEGANCE

AE

KITCHEN FAUCET - PULLOUT - CERAMIC CARTRIDGE



AE-251



AE-251	8" Chrome Plate Kitchen Faucet, Metal Lever Handle, Pull-Out Spray (ADA)	1	12	154.00
AE-251S	Same As Above With Brushed Nickel Finish (ADA)	1	12	184.00

**CLASSIC ELEGANCE
EURO DESIGN**

FT

KITCHEN FAUCET - SINGLE LEVER - WASHERLESS CARTRIDGE

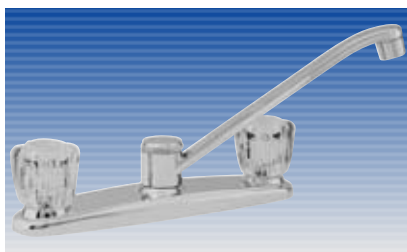


FT-200SEL



FT-200SEL	8" Chrome Plate Kitchen Faucet, Solid Lever Handle, Less Spray (ADA)	1	12	49.46
FT-210SEL	Same As Above With Chrome Plate Spray (ADA)	1	12	59.85
FT-200SELS	Same As FT-200SEL With Brushed Nickel Finish (ADA)	1	12	70.04
FT-210SELS	Same As FT-210SEL With Hose & Brushed Nickel Spray (ADA)	1	12	84.75
FT-210SELSSH	8" Chrome Plate Kitchen Deck Faucet, Solid Lever Handle, With Hose & Spray 20" Supply Hose Attached (ADA)	1	12	68.20

JOB PACKS - Available on above faucets



FT-300ED

FT

KITCHEN FAUCET - TWO HANDLE - WASHERLESS CARTRIDGE

FT-300ED	8" Chrome Plate Kitchen Faucet, Acrylic Handles, Less Spray (ADA)	1	6	43.30
FT-310ED	8" Chrome Plate Kitchen Faucet, Acrylic Handles, With Spray (ADA)	1	6	52.60
JOB PACKS - Available on above faucets				
FT-305ED	8" Chrome Plate Kitchen Faucet, Metal Handles, Less Spray (ADA)	1	6	46.90
FT-315ED	8" Chrome Plate Kitchen Faucet, Metal Handles, With Spray (ADA)	1	6	55.68

MATCO-NORCA
MODEL #

SIZE &
DESCRIPTION

INNER
CARTON
QUANTITY

MASTER
CARTON
QUANTITY

LIST
PRICE

CLASSIC ELEGANCE

FT

KITCHEN FAUCET - TWO HANDLE - WASHERLESS CARTRIDGE



FT-300ED3



3 Decorator Handles Included - Acrylic-Oak-White

FT-300ED3 8" Chrome Plate Kitchen Faucet
Less Spray (ADA) 1 12 48.00

FT-310ED3 8" Chrome Plate Kitchen Faucet
With Spray (ADA) 1 12 59.00



FT-200

FT

KITCHEN FAUCET - SINGLE LEVER - WASHERLESS CARTRIDGE

Classic Design



FT-200 8" Chrome Plate Kitchen Faucet,
Metal Handle,
Less Spray (ADA) 1 6 46.80



FT-210 8" Chrome Plate Kitchen Faucet,
Metal Handle,
With Spray (ADA) 1 6 49.00



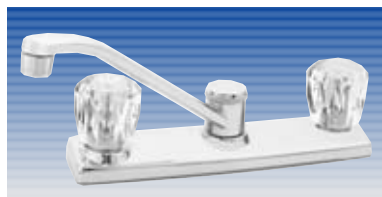
FT-210D



FT-210D 8" Chrome Plate Kitchen Faucet,
Metal Handle,
With On Deck Spray (ADA) 1 6 49.00



JOB PACKS - Available on above faucets



FT-300

FT

KITCHEN FAUCET - TWO HANDLE - WASHERLESS CARTRIDGE

CLASSIC DESIGN

FT-300 8" Chrome Plate Kitchen Faucet,
Acrylic Handles,
Less Spray (ADA) 1 6 34.20



FT-310 8" Chrome Plate Kitchen Faucet,
Acrylic Handles,
With Spray (ADA) 1 6 41.80



FT-300WB

FT-300WB 8" Chrome Plate Kitchen Faucet,
Wrist Blade Handles,
Less Spray (ADA) 1 12 55.00



JOB PACKS - Available on above faucets

MATCO-NORCA
MODEL #

SIZE &
DESCRIPTION

INNER
CARTON
QUANTITY

MASTER
CARTON
QUANTITY

LIST
PRICE

CLASSIC ELEGANCE

FT KITCHEN FAUCET - TWO HANDLE - WASHERLESS CARTRIDGE



FT-900



CLASSIC DESIGN

FT-900 8" Chrome Plate Kitchen Faucet, Acrylic Handles, High Spout, Less Spray (ADA) 1 12 44.80

FT-910 8" Chrome Plate Kitchen Faucet, Acrylic Handles, High Spout, With Spray (ADA) 1 12 56.40



WHITE



ACRYLIC



OAK

Faucet With 3 Decorator Handles Included - Acrylic-Oak-White

FT-910ED3 8" Chrome Plate Kitchen Faucet, High Spout, With White Spray (ADA) Same As FT-910, Comes With 3 Decorator Handles (ADA) 1 12 75.80

FT KITCHEN FAUCET - SINGLE LEVER - WASHERLESS



FT-910WL



FT-900WL 8" Chrome Plate Kitchen Faucet, White Lever Handles, High Spout, Less Spray (ADA) 1 12 49.40

FT-910WL 8" Chrome Plate Kitchen Faucet, White Lever Handles High Spout, With White Spray (ADA) 1 12 61.54

MATCO-NORCA MODEL #	SIZE & DESCRIPTION	INNER CARTON QUANTITY	MASTER CARTON QUANTITY	LIST PRICE
---------------------	--------------------	-----------------------	------------------------	------------

CLASSIC ELEGANCE

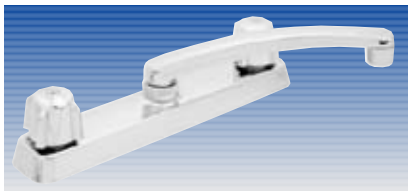
FY BAR FAUCET



FY-990



FY-990	4" Chrome Plate Bar Faucet, Metal Handles, With Gooseneck Spout	1	24	28.50
FY-991WB	Same As Above With Wrist Blade Handles	1	12	46.00



FT-700

FT COMPRESSION KITCHEN FAUCET - TWO HANDLE

Classic Design

FT-700	8" Chrome Plate Kitchen Faucet, Solid Brass Spout, Metal Handles, Less Spray	1	24	34.40
---------------	--	---	----	-------



FT-777

FT-777	8" Chrome Plate Kitchen Faucet, Solid Cast Brass Spout, Heavy Pattern, Gerber Style, Less Spray	1	24	52.00
---------------	---	---	----	-------



HS-300

WM KITCHEN FAUCET HOSE & SPRAY

HS-100	Spray Head With Mounting Hardware	1	100	3.94
HS-200	4' Replacement Hose with Universal Coupling	1	100	4.73
HS-300	4' Replacement Hose With Universal Coupling and Spray Head	1	50	9.18



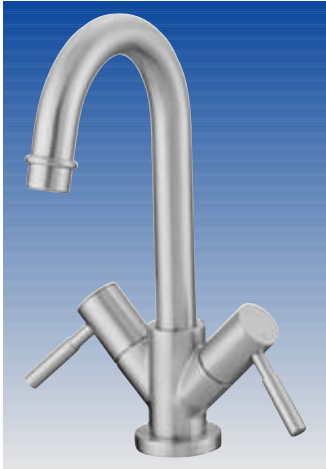
LSD-100

LSD LIQUID SOAP DISPENSER

LSD-100	Liquid Soap Dispenser Chrome Finish	1	50	16.22
LSD-100S	Same As Above With Brushed Nickel finish	1	50	23.85

PADOVA

MATCO-NORCA MODEL #	SIZE & DESCRIPTION	INNER CARTON QUANTITY	MASTER CARTON QUANTITY	LIST PRICE
---------------------	--------------------	-----------------------	------------------------	------------



AE-895S



AE LAVATORY FAUCET - TWO HANDLE SINGLE HOLE MOUNT - CERAMIC CARTRIDGE

AE-895	Single Hole Chrome Plate Lavatory Faucet, Lever Handles, Ceramic Cartridge, With Brass Pop-Up (ADA)	1	6	183.35
AE-895S	Same As AE-895, With Brushed Nickel Finish (ADA)	1	6	227.25



AE-995S



AE LAVATORY FAUCET - TWO HANDLE WIDESPREAD - CERAMIC CARTRIDGE

AE-995	Widespread Chrome Plate Lavatory Faucet, Lever Handles, Ceramic Cartridge, With Brass Pop-Up (ADA)	1	6	231.50
AE-995S	Same As Above With Brushed Nickel Finish (ADA)	1	6	256.50



AE-115PBW



AE TUB & SHOWER FAUCET - SINGLE LEVER WASHERLESS CARTRIDGE

AE-115PBW	Chrome Plate Pressure Balanced Decorator Tub & Shower Single Lever Washerless Cartridge, ADA)	1	6	372.25
AE-115PBWS	Same As Above With Brushed Nickel Finish (ADA)	1	6	458.00
AE-115SPBW	Same As AE-115PBW, Shower Only (ADA)	1	6	354.25
AE-115SPBWS	Same As Above With Brushed Nickel Finish (ADA)	1	6	431.00

***NOTE:** All units available in Sweat and PEX connection with threaded or slip on diverter

CRESCENDO



AE-875



MATCO-NORCA
MODEL #

SIZE &
DESCRIPTION

INNER
CARTON
QUANTITY

MASTER
CARTON
QUANTITY

LIST
PRICE

AE

LAVATORY FAUCET - TWO HANDLE 4" CENTERSET - CERAMIC CARTRIDGE

AE-875	4" Centerset Chrome Plate Lavatory Faucet, Lever Handles, Ceramic Cartridge, With Brass Pop-Up (ADA)	1	6	129.24
AE-875S	Same As Above With Brushed Nickel Finish (ADA)	1	6	155.10
AE-875AB	Same As AE-875 With Antique Copper Finish (ADA)	1	6	154.62
AE-875ORB	Same As AE-875 With Oil Rubbed Bronze Finish (ADA)	1	6	154.62



AE-175



AE

LAVATORY FAUCET - TWO HANDLE WIDESPREAD - CERAMIC CARTRIDGE

AE-175	4" Chrome Plate Mini-Widespread Lavatory Faucet, Lever Handles, Ceramic Cartridge, With Brass Pop-Up (ADA)	1	6	199.68
AE-175S	Same As Above With Brushed Nickel Finish (ADA)	1	6	231.00
AE-175AB	Same As AE-175 With Antique Copper Finish (ADA)	1	6	228.50
AE-175ORB	Same As AE-175 With Oil Rubbed Bronze Finish (ADA)	1	6	228.50



AE-176



AE

ROMAN TUB FILLER - TWO HANDLE - CERAMIC CARTRIDGE

AE-176	Chrome Plate Roman Tub Filler Deck Mount, Lever Handles, Ceramic Cartridge,	1	6	272.90
AE-176S	Same As Above With Brushed Nickel Finish (ADA)	1	6	307.98
AE-176AB	Same As AE-176 With Antique Copper Finish (ADA)	1	6	297.14
AE-176ORB	Same As AE-176 With Oil Rubbed Bronze Finish (ADA)	1	6	302.15

MATCO-NORCA
MODEL #

SIZE &
DESCRIPTION

INNER
CARTON
QUANTITY

MASTER
CARTON
QUANTITY

LIST
PRICE

CRESCENDO



AE-110PBW



AE

TUB & SHOWER FAUCET - SINGLE LEVER WASHERLESS CARTRIDGE

IPS Connection

AE-110PBW	Chrome Plate, Pressure Balanced Decorator Tub & Shower, Single Lever Washerless Cartridge,	1	8	239.50
AE-110PBWS	Same As Above With Brushed Nickel Finish (ADA)	1	8	299.50
AE-110PBWORB	Same As Above With Oil Rubbed Bronze Finish (ADA)	1	8	335.50
AE-110PBWAB	Same As Above With Antique Copper Finish (ADA)	1	8	335.50

Shower Only - IPS Connection

AE-110SPBW	Chrome Plate, Pressure Balanced Shower Faucet Single Lever Washerless Cartridge. (ADA)	1	6	227.50
AE-110SPBWS	Same As Above With Brushed Nickel Finish (ADA)	1	6	279.00
AE-110SPBWORB	Same As Above With Oil Rubbed Finish (ADA)	1	6	319.50
AE-110SPBWAB	Same As Above With Antique Copper Finish (ADA)	1	6	319.50

***NOTE** All units available in Sweat & PEX connection with Threaded or Slip-on Diverter

PORTIA



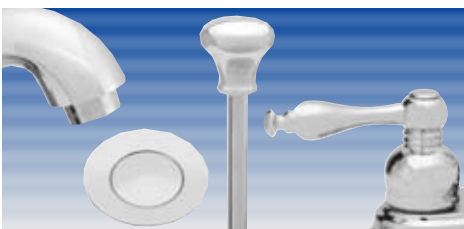
AE-865



AE

LAVATORY FAUCET - TWO HANDLE 4" CENTERSET - WASHERLESS CARTRIDGE

AE-865	4" Chrome Plate Lavatory Faucet, Lever Handles, Washerless Cartridge, With Brass Pop-Up (ADA)	1	6	86.36
AE-865S	Same As Above With Brushed Nickel Finish (ADA)	1	6	113.67
AE-865ORB	Same As AE-865 With Oil Rubbed Bronze Finish (ADA)	1	6	127.80
AE-865KIT	Trim Kit Converts Chrome Faucet To Two-Tone, Includes Aerator Pop-Up, Knob And Lever Handles In PVD Brass	1	6	24.00



AE-865KIT

PORTIA

MATCO-NORCA
MODEL #

SIZE &
DESCRIPTION

INNER
CARTON
QUANTITY

MASTER
CARTON
QUANTITY

LIST
PRICE

AE

**LAVATORY FAUCET - TWO HANDLE - WIDESPREAD
WASHERLESS CARTRIDGE**



AE-165



AE-165

4" Chrome Plate Lavatory Faucet,
Lever Handles,
Washerless Cartridge,
With Brass Pop-Up (ADA)

1

6

148.05

AE-165S

Same As Above With
Brushed Nickel Finish (ADA)

1

6

175.40

AE-165ORB

Same As AE-165 With
Oil Rubbed Bronze Finish (ADA)

1

6

186.00



AE-165KIT

AE-165KIT

Trim Kit Converts Chrome Faucet
To Two-Tone, Includes Aerator
Pop-Up, Knob And Lever Handles
In PVD Brass

1

6

35.80

AE

ROMAN TUB FILLER - CERAMIC CARTRIDGE



AE-155



AE-155

Chrome Plate Roman Tub Faucet,
Lever Handles,
Rough In Body, Slip Fit Trim
Ceramic Cartridge, (ADA)

1

6

264.60

AE-155S

Same As Above With
Brushed Nickel Finish (ADA)

1

6

298.00

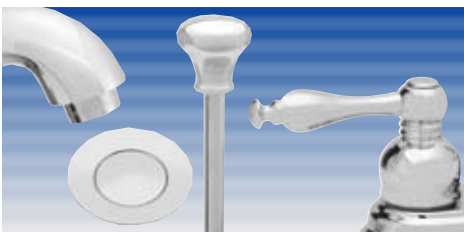
AE-155ORB

Same As AE-155 With
Oil Rubbed Bronze Finish (ADA)

1

6

316.00



AE-155KIT

AE-155KIT

Trim Kit Converts Chrome Faucet
To Two-Tone, Includes Aerator
Pop-Up, Knob And Lever Handles
In PVD Brass

1

24

47.50

PORTIA



AE-105PBW



MATCO-NORCA MODEL #	SIZE & DESCRIPTION	INNER CARTON QUANTITY	MASTER CARTON QUANTITY	LIST PRICE
---------------------	--------------------	-----------------------	------------------------	------------

AE TUB & SHOWER FAUCET - SINGLE LEVER WASHERLESS CARTRIDGE

IPS Connection

AE-105PBW Chrome Plate, Pressure Balanced Decorator Tub & Shower Faucet, Single Lever, Washerless Cartridge, (ADA) 1 6 172.20

AE-105PBWS Same As Above With Brushed Nickel Finish (ADA) 1 6 229.00

AE-105PBWORB Same As Above With Oil Rubbed Bronze Finish (ADA) 1 6 285.00

Shower Only - IPS Connection

AE-105SPBW Same As AE-100PBW With Decorator Trim 1 6 157.21

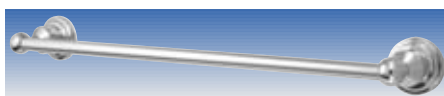
AE-105SPBWS Same As Above With Brushed Nickel Finish (ADA) 1 6 196.50

AE-105SPBWORB Same As Above With Oil Rubbed Bronze Finish (ADA) 1 6 242.50

AE-105PBWKIT Trim Kit Including Lever Handle Faceplate and Screws In PVD Brass (ADA) 1 24 66.47

***NOTE** All units available in Sweat & PEX connection with Threaded or Slip-on Diverter

AC TUB & SHOWER ACCESSORIES



AC-TB24CP

AC-TB24CP 24" Chrome Plate Towel Bar With Brackets 1 6 25.32

AC-TB24BN Same As Above With Brushed Nickel Finish 1 6 34.68

AC-TB24ORB Same As Above With Oil Rubbed Bronze Finish 1 6 54.20



AC-TRCP

AC-TRCP 7" Chrome Plate Towel Ring 1 6 16.20

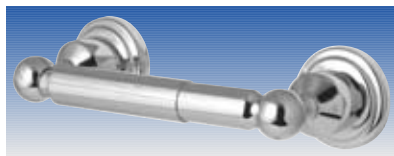
AC-TRBN Same As Above With Brushed Nickel Finish 1 6 22.98

AC-TRORB Same As Above With Oil Rubbed Bronze Finish 1 6 33.50

PORTIA



AC-RHCP



AC-RHCP

MATCO-NORCA
MODEL #

SIZE &
DESCRIPTION

INNER
CARTON
QUANTITY

MASTER
CARTON
QUANTITY

LIST
PRICE

AC

TUB & SHOWER ACCESSORIES

AC-RHCP	Chrome Plate Robe Hook	1	6	15.16
AC-RHBN	Same As Above With Brushed Nickel Finish	1	6	17.56
AC-RHORB	Same As Above With Oil Rubbed Bronze Finish	1	6	25.25
AC-PHCP	Chrome Plate Toilet Paper Holder	1	6	21.94
AC-PHBN	Same As Above With Brushed Nickel Finish	1	6	28.70
AC-PHORB	Same As Above With Oil Rubbed Bronze Finish	1	6	43.75

NAPOLI



AE-835



AE

LAVATORY FAUCET - TWO HANDLE 4" CENTERSET - CERAMIC CARTRIDGE

AE-835	4" Centerset Chrome Plate Lavatory Faucet, Lever Handles, Ceramic Cartridge, With Brass Pop-Up (ADA)	1	6	88.50
AE-835S	Same As Above With Brushed Nickel Finish (ADA)	1	6	111.00



AE-135



AE

LAVATORY FAUCET - TWO HANDLE WIDESPREAD - CERAMIC CARTRIDGE

AE-135	Widespread Chrome Plate Lavatory Faucet, Lever Handles, Ceramic Cartridge, With Brass Pop-Up (ADA)	1	6	160.23
AE-135S	Same As Above With Brushed Nickel Finish (ADA)	1	6	186.64

MATCO-NORCA
MODEL #

SIZE &
DESCRIPTION

INNER
CARTON
QUANTITY

MASTER
CARTON
QUANTITY

LIST
PRICE

NAPOLI



AE-136



AE

ROMAN TUB FILLER - TWO HANDLE CERAMIC CARTRIDGE

MATCO-NORCA MODEL #	SIZE & DESCRIPTION	INNER CARTON QUANTITY	MASTER CARTON QUANTITY	LIST PRICE
AE-136	Roman Tub Filler Lever Handles, Ceramic Cartridge Rough In Body, Slip Fit Trim (ADA)	1	6	296.00
AE-136S	Same As Above With Brushed Nickel Finish (ADA)	1	6	336.00

POSITANO



AE-805



AE

LAVATORY FAUCET - TWO HANDLE 4" CENTERSET - CERAMIC CARTRIDGE

MATCO-NORCA MODEL #	SIZE & DESCRIPTION	INNER CARTON QUANTITY	MASTER CARTON QUANTITY	LIST PRICE
AE-855	4" Centerset Chrome Plate Lavatory Faucet, Lever Handles, Ceramic Cartridge, With Brass Pop-Up (ADA)	1	6	76.68
AE-855S	Same As Above With Brushed Nickel Finish (ADA)	1	6	104.90
AE-855B	Same As AE-855 With Polished Brass Finish (ADA)	1	6	129.73
AE-805	Same As AE-855 Less Pop-Up (ADA)	1	6	65.93
AE-805S	Same As AE-855 With Brushed Nickel Finish Less Pop-Up (ADA)	1	6	93.31



AE-855KIT

AE-855KIT

AE-855KIT	Trim Kit Converts Chrome Faucet To Two-Tone, Includes Aerator Pop-Up, Knob And Lever Handles In PVD Brass (ADA)	1	6	38.02
------------------	---	---	---	-------

MATCO-NORCA
MODEL #

SIZE &
DESCRIPTION

INNER
CARTON
QUANTITY

MASTER
CARTON
QUANTITY

LIST
PRICE

POSITANO

AE

LAVATORY FAUCET - TWO HANDLE - WIDESPREAD CERAMIC CARTRIDGE



AE-150



AE-150

4" - 16" Chrome Plate Mini-Widespread
Lavatory Faucet, 5-1/2" Spout
Lever Handles, Ceramic Cartridge,
With Brass Pop-Up (ADA)

1

6

175.00

AE-150S

Same As Above With
Brushed Nickel Finish (ADA)

1

6

204.00

AE-150B

Same As AE-150 With
Polished Brass Finish (ADA)

1

6

247.00



AE-150KIT

AE-150KIT

Trim Kit Converts Chrome Faucet
To Two-Tone, Includes Aerator
Pop-Up, Knob And Lever Handles
In PVD Brass (ADA)

1

6

64.00

AE

ROMAN TUB FILLER - TWO HANDLE - CERAMIC CARTRIDGE



AE-151



AE-151

Chrome Plate Roman Tub Filler
Deck Mount, Lever Handles,
Ceramic Cartridge,

1

6

212.00

AE-151S

Same As Above With
Brushed Nickel Finish (ADA)

1

6

261.00

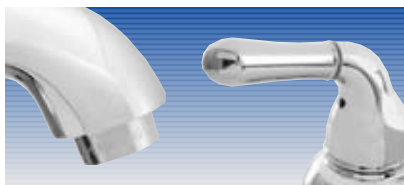
AE-151B

Same As AE-151 With
Polished Brass Finish (ADA)

1

6

331.80



AE-150KIT

AE-151KIT

Trim Kit Converts Chrome Faucet
To Two-Tone, Includes Aerator
And Lever Handles
In PVD Brass (ADA)

1

6

40.60

MATCO-NORCA
MODEL #

SIZE &
DESCRIPTION

INNER
CARTON
QUANTITY

MASTER
CARTON
QUANTITY

LIST
PRICE

POSITANO



AE-100PBW



AE SHOWER FAUCET - SINGLE LEVER - WASHERLESS CARTRIDGE

IPS Connection

MATCO-NORCA MODEL #	SIZE & DESCRIPTION	INNER CARTON QUANTITY	MASTER CARTON QUANTITY	LIST PRICE
AE-100SPBW	Chrome Plate, Pressure Balanced Shower Faucet, Single Lever, Washerless Cartridge, (ADA)	1	8	154.00
AE-100SPBWS	Same As Above With Brushed Nickel Finish (ADA)	1	8	209.50
AE-100SPBWB	Same As AE-100SPBW With Polished Brass Finish (ADA)	1	8	214.00

AE TUB & SHOWER - SINGLE LEVER PRESSURE BALANCED - WASHERLESS CARTRIDGE

IPS Connection

MATCO-NORCA MODEL #	SIZE & DESCRIPTION	INNER CARTON QUANTITY	MASTER CARTON QUANTITY	LIST PRICE
AE-100PBW	Chrome Plate, Pressure Balanced Tub & Shower Faucet, Single Lever, Washerless Cartridge, (ADA)	1	8	159.00
AE-100PBWS	Same As Above With Brushed Nickel Finish (ADA)	1	8	224.00
AE-100PBWB	Same As AE-100PBW With Polished Brass Finish (ADA)	1	8	263.00
AE-100PBWKIT	Trim Kit Including Lever Handle Faceplate and Screws In PVD Brass (ADA)	1	24	61.95

1/2" Sweat Connection

MATCO-NORCA MODEL #	SIZE & DESCRIPTION	INNER CARTON QUANTITY	MASTER CARTON QUANTITY	LIST PRICE
AE-100PBWC	Chrome Plate, Pressure Balanced Tub & Shower Faucet, Single Lever, Washerless Cartridge, 1/2" C x C Connection (ADA)	1	8	161.00
AE-100PBWSC	Same As AE-100PBWC With Brushed Nickel Finish, 1/2" Sweat Connection (ADA)	1	8	224.00
AE-100PBWBC	Same As Above, Polished Brass Finish 1/2" Sweat Connection (ADA)	1	8	262.50



AE-100PBW



*NOTE All Units Available in PEX Connection

MATCO-NORCA
MODEL #

SIZE &
DESCRIPTION

INNER
CARTON
QUANTITY

MASTER
CARTON
QUANTITY

LIST
PRICE

RAVELLO



AE-495



AE

LAVATORY FAUCET - SINGLE LEVER 4" CENTERSET - CERAMIC CARTRIDGE

MATCO-NORCA MODEL #	SIZE & DESCRIPTION	INNER CARTON QUANTITY	MASTER CARTON QUANTITY	LIST PRICE
AE-490	4" Chrome Plate Lavatory Faucet, Single Lever, Ceramic Cartridge, Less Pop-Up	1	6	79.55
AE-490S	Same As Above With Brushed Nickel Finish (ADA)	1	6	99.55
AE-495	4" Chrome Plate Lavatory Faucet, Single Lever, Ceramic Cartridge, With Brass Pop-Up (ADA)	1	6	87.90
AE-495S	Same As Above With Brushed Nickel Finish (ADA)	1	6	110.40



AE-880



AE

LAVATORY FAUCET - TWO HANDLE 4" CENTERSET - WASHERLESS CARTRIDGE

MATCO-NORCA MODEL #	SIZE & DESCRIPTION	INNER CARTON QUANTITY	MASTER CARTON QUANTITY	LIST PRICE
AE-880	4" Chrome Plate Lavatory Faucet, Washerless Cartridge, Lever Handles Less Pop-Up (ADA)	1	6	64.45
AE-880S	Same As Above With Brushed Nickel Finish Less Pop-Up (ADA)	1	6	84.45
AE-885	4" Chrome Plate Lavatory Faucet, Washerless Cartridge, Lever Handles, With Brass Pop-Up (ADA)	1	6	72.80
AE-885S	Same As Above With Brushed Nickel Finish (ADA)	1	6	95.30



AE-185



AE

LAVATORY FAUCET - TWO HANDLE WIDESPREAD - WASHERLESS CARTRIDGE

MATCO-NORCA MODEL #	SIZE & DESCRIPTION	INNER CARTON QUANTITY	MASTER CARTON QUANTITY	LIST PRICE
AE-185	Chrome Plate Mini-Widespread Lavatory Faucet, Lever Handles, Washerless Cartridge with Pop-Up (ADA)	1	6	158.00
AE-185S	Same As Above With Brushed Nickel Finish (ADA)	1	6	185.00

MATCO-NORCA
MODEL #

SIZE &
DESCRIPTION

INNER
CARTON
QUANTITY

MASTER
CARTON
QUANTITY

LIST
PRICE

RAVELLO



AE-187



AE		ROMAN TUB FILLER - TWO HANDLE - CERAMIC CARTRIDGE		
AE-186	Chrome Plate Roman Tub Filler Deck Mount, Lever Handles, Rough In Body, Slip Fit Trim Ceramic Cartridge (ADA)	1	6	297.75
AE-186S	Same As Above With Brushed Nickel Finish (ADA)	1	6	337.75
AE-187	Same As AE-186, With Side Spray Rough In Body, Slip Fit Trim(ADA)	1	6	400.25
AE-187S	Same As Above With Brushed Nickel Finish (ADA)	1	6	447.75



AE-440



AE		BIDET - TWO HANDLE - CERAMIC CARTRIDGE		
AE-440	Chrome Plate Bidet Lever Handles, Ceramic Cartridge (ADA)	1	6	161.35
AE-440S	Same As Above With Brushed Nickel Finish (ADA)	1	6	186.35

CLASSIC ELEGANCE *EURO DESIGN*



CT-400SEL



CT		LAVATORY FAUCET - SINGLE LEVER 4" CENTERSET - WASHERLESS CARTRIDGE		
CT-400SEL	4" Chrome Plate Lavatory Faucet, Solid Lever Handle Washerless Cartridge Less Pop-Up (ADA)	1	12	46.15
CT-452SEL	Same As Above With Brass Pop-Up (ADA)	1	12	55.07
CT-400SELS	Same As CT-400SEL With Brushed Nickel Finish (ADA)	1	12	50.87
CT-452SELS	Same As CT-452SEL With Brushed Nickel Finish (ADA)	1	12	59.79
CT-452SELSH	Same As CT-452SEL With Brushed Nickel Finish With 20" Supply Hose Attached (ADA)	1	12	65.75

JOB PACKS - Available on above faucets

CLASSIC ELEGANCE
EURO DESIGN



CT-800ED



CT-805ED



MATCO-NORCA
MODEL #

SIZE &
DESCRIPTION

INNER
CARTON
QUANTITY

MASTER
CARTON
QUANTITY

LIST
PRICE

CT LAVATORY FAUCET - TWO HANDLE - WASHERLESS CARTRIDGE

CT-800ED	4" Chrome Plate Lavatory Faucet, Acrylic Handles, Washerless Cartridge Less Pop Up	1	12	34.00
CT-852ED	4" Chrome Plate Lavatory Faucet, Acrylic Handles, Washerless Cartridge With Brass Pop Up	1	12	41.00
CT-805ED	4" Chrome Plate Lavatory Faucet, Metal Handles, Washerless Cartridge Less Pop Up	1	12	29.50
CT-855ED	4" Chrome Plate Lavatory Faucet, Metal Handles, Washerless Cartridge With Brass Pop Up	1	12	43.50

JOB PACKS - Available on above faucets

CLASSIC ELEGANCE



CT-852ED3



CT LAVATORY FAUCET - TWO HANDLE - WASHERLESS CARTRIDGE

CT-852ED3	4" Chrome Plate Lavatory Faucet, Washerless Cartridge, 3 Decorator Handles, Acrylic, Oak & White With Brass Pop Up	1	12	48.30
CT-800EDWB	4" Chrome Plate Lavatory Faucet, Washerless Cartridge, Wrist Blade Handles (ADA)	1	12	58.67



CT-800EDWB



MATCO-NORCA
MODEL #

SIZE &
DESCRIPTION

INNER
CARTON
QUANTITY

MASTER
CARTON
QUANTITY

LIST
PRICE

CLASSIC ELEGANCE

CT

LAVATORY FAUCET - WIDESPREAD - WASHERLESS CARTRIDGE



CT-150

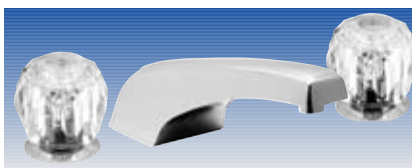
CT-150

Chrome Plate Widespread Lavatory Faucet,
Acrylic Handles
Washerless Cartridge
Brass Pop-Up

1

12

88.46



RT-151

RT

**ROMAN TUB FILLER - TWO HANDLE
WASHERLESS CARTRIDGE**

RT-151

Chrome Plate Roman Tube Filler
Extra Large Acrylic Handles
Rough In Body, Slip Fit Trim
Washerless Cartridge,
Slip Fit 9" Spout

1

12

144.50



CT-800

CT

**LAVATORY FAUCET - TWO HANDLE
4" CENTERSET - WASHERLESS CARTRIDGE**

CT-800

4" Chrome Plate Lavatory Faucet,
Washerless Cartridge,
Acrylic Handles, Less Pop-Up

1

12

26.80

CT-852

4" Chrome Plate Lavatory Faucet,
Washerless Cartridge,
Acrylic Handles, With Pop-Up

1

12

34.00



CT-800WB

CT-800WB

4" Chrome Plate Lavatory Faucet,
Washerless Cartridge
Wrist Blade Handles, (ADA)

1

12

39.50

JOB PACKS - Available on above faucets



CLASSIC ELEGANCE

MATCO-NORCA MODEL #

SIZE & DESCRIPTION

INNER CARTON QUANTITY

MASTER CARTON QUANTITY

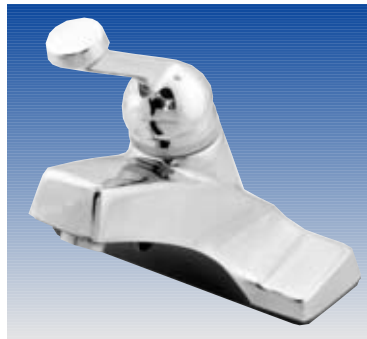
LIST PRICE

CT LAVATORY FAUCET - SINGLE HANDLE - 4" CENTERSET



CT-400

CT-400	4" Chrome Plate Lavatory Faucet, Acrylic Handle, Less Pop-Up	1	12	37.53
CT-452	Same As Above, With Brass Pop-Up	1	12	44.00



CT-400D

CT-400D	4" Chrome Plate Lavatory Faucet, Metal Lever Handle, Less Pop-Up (ADA)	1	12	37.53
CT-452D	Same As Above, With Brass Pop-Up (ADA)	1	12	52.00



JOB PACKS - Available on above faucets

CT LAVATORY FAUCET - TWO HANDLE 4" CENTERSET - COMPRESSION



CT-705

CT-705	4" Chrome Plate Lavatory Faucet, Metal Handles, Less Pop-Up	1	12	29.80
CT-750	Same As Above, With Chrome Plate Brass Pop-Up	1	12	36.78



CT-777WB

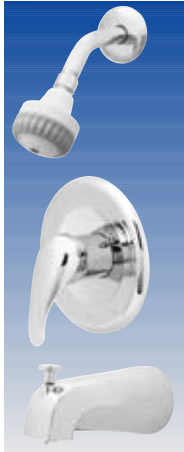
CT-777	4" Chrome Plate Lavatory Faucet, Solid Brass Metal Handles, With Pop-Up (ADA)	1	12	52.93
CT-777WB	4" Chrome Plate Lavatory Faucet, Metal Wrist Blade Handles, Gerber Style (ADA)	1	12	41.90



CLASSIC ELEGANCE

MATCO-NORCA MODEL #	SIZE & DESCRIPTION	INNER CARTON QUANTITY	MASTER CARTON QUANTITY	LIST PRICE
---------------------	--------------------	-----------------------	------------------------	------------

**TNS TUB & SHOWER SET - SINGLE LEVER
PRESSURE BALANCED - WASHERLESS CARTRIDGE**



TNS-100PBWSL



TNS-100SPBWSL

TNS-100PBWSL	Chrome Plate Tub & Shower Pressure Balancing Valve, Washerless Cartridge, Solid Lever Handle, Integral Stops Chrome Plate Brass Shower Arm With Massage Shower Head, Diverter Spout, IPS Connection (ADA)	1	8	130.50
TNS-100PBWSLS	Same As Above With Brushed Nickel Finish (ADA)	1	8	172.00
TNS-100PBWCSL	Same As TNS-100PBWSL With Sweat Connection (ADA)	1	8	132.50
TNS-100SPBWSL	Same As TNS-100PBWSL Shower Only (ADA)	1	8	124.70
TNS-100PB-BW	Body Only, Pressure Balancing Valve, Washerless Cartridge, Solid Lever Handle, Integral Stops IPS Connection	1	12	87.00
TNS-100PB-BWC	Same As Above Sweat Connection	1	12	87.40
TNS-100PB-BWPX	Same As TNS-100PB-BW With PEX Connection	1	12	91.00

CLASSIC ELEGANCE

TNS TUB & SHOWER TRIM KIT



TNS-100PB-TWSL

TNS-100PB-TWSL	Trim Only Chrome Plate Tub & Shower Solid Lever Handle, Chrome Plate Brass Shower Arm, Massage Shower Head, Escutcheon	1	12	41.30
TNS-100PB-TWSLSR	Same As Above With Hub & Cap With Brushed Nickel Finish	1	12	101.00

MATCO-NORCA
MODEL #

SIZE &
DESCRIPTION

INNER
CARTON
QUANTITY

MASTER
CARTON
QUANTITY

LIST
PRICE

CLASSIC ELEGANCE

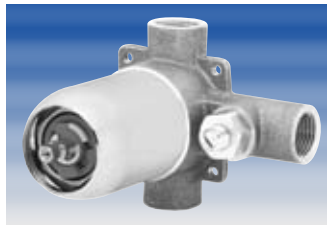
**TNS TUB & SHOWER SET - SINGLE LEVER
PRESSURE BALANCED - CERAMIC CARTRIDGE**



TNS-100PB



TNS-100SPB



TNS-100PB-B

TNS-100PB

Chrome Plate Tub & Shower Pressure Balancing Valve, Ceramic Cartridge, Loop Handle, Integral Stops Chrome Plate Brass Shower Arm With Massage Shower Head, Threaded Diverter Spout, IPS Connection (ADA)

1

8

144.00

TNS-100PBC

Same As Above With With Sweat Connection

1

8

148.00

TNS-100SPB

Same As TNS-100PB Shower Only

1

8

135.00

TNS-100SPBC

Same As TNS-100PB Shower Only, Sweat Connection

1

8

135.00

TNS-100PB-B

Same As TNS-100PB Body Only - IPS Connection

1

12

97.00

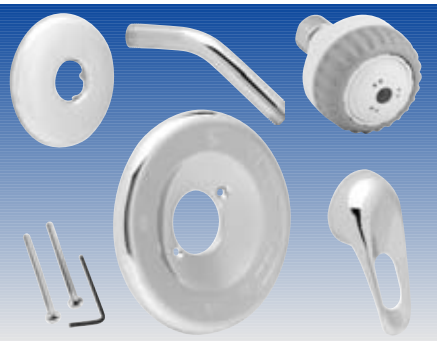
TNS-100PB-BC

Same As TNS-100PB Body Only Sweat Connection

1

12

98.00



TNS-100PB-T

TNS TRIM KIT FOR TNS-100PB

TNS-100PB-T

Trim Only Chrome Plate Tub & Shower Loop Handle, Chrome Plate Brass Shower Arm, Massage Shower Head, Escutcheon

1

12

43.80

MATCO-NORCA MODEL #

SIZE & DESCRIPTION

INNER CARTON QUANTITY

MASTER CARTON QUANTITY

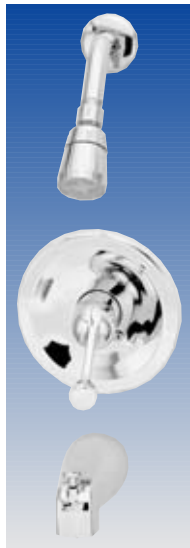
LIST PRICE

CLASSIC ELEGANCE

TNS TUB & SHOWER SET - SINGLE LEVER - WASHERLESS CARTRIDGE



TNS-100PB-TW



TNS-100D

TNS-100

Tub & Shower Combination, Washerless Cartridge, Acrylic Single Handle Threaded Die Cast Diverter Spout, Chrome Plate Brass Arm and Head IPS Connection

1

8

75.00

TNS-100D



Same As Above, With Metal Single Handle, (ADA) IPS Connection

1

8

80.00

TNS-100S

Same As TNS-100 Shower Valve Only IPS Connection

1

8

71.50

TNS TUB & SHOWER SET - TWO HANDLE WASHERLESS CARTRIDGE



TNS-782WS



TNS-782WS

Combination Acrylic 2 Handle, Chrome Plate Tub & Shower With Threaded Chrome Plate Diverter Spout, Chrome Plate ABS Shower Head, Arm & Flange, IPS Connection

1

6

69.50

TNS-782TWS

Same As Above Tub Filler Only

1

6

66.50

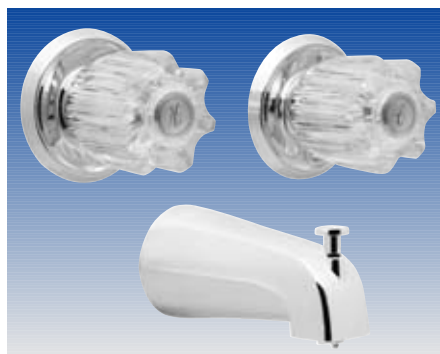
TNS-782SWS

Same As Above Shower Only

1

6

62.00



TNS-782TWS



TNS-782SWS



MATCO-NORCA
MODEL #

SIZE &
DESCRIPTION

INNER
CARTON
QUANTITY

MASTER
CARTON
QUANTITY

LIST
PRICE

CLASSIC ELEGANCE

TNS

TUB & SHOWER SET - THREE HANDLE WASHERLESS CARTRIDGE



TNS-783WS

TNS-783WS Combination Acrylic 3 Handle Diverter Tub & Shower Set With Chrome Plate Die Cast Threaded Spout and Chrome Plate ABS Showerhead, Arm & Flange, IPS Connection

1 6 85.25



CLASSIC ELEGANCE

TNS

TUB & SHOWER SET - TWO AND THREE HANDLE COMPRESSION



TNS-500

TNS-500 Heavy Duty 3 Valve Chrome Plate Tub & Shower Combination With Gerber Compatible Parts

1 6 102.00

TNS-782 Chrome Plate 2 Valve Tub & Shower Combination With Chrome Plate Metal Handles, Threaded Chrome Plate Die Cast Diverter Spout and Chrome Plate Brass Showerhead, Arm & Flange, IPS Connection

1 12 60.45

TNS-782T Same As Above With Acrylic Handles, Tub Filler Only

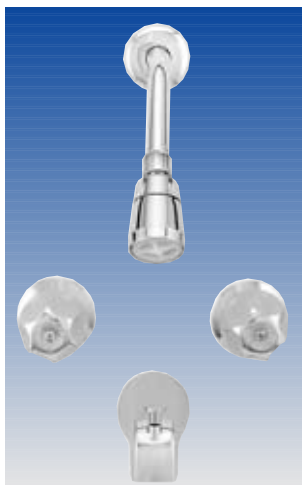
1 6 57.80

TNS-782S Same As Above Shower Only

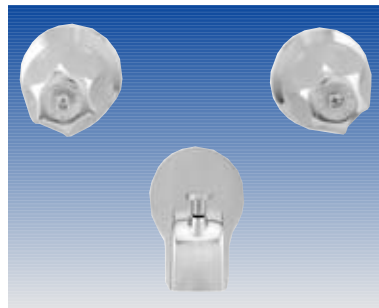
1 6 56.00

TNS-783 Chrome Plate 3 Valve Tub & Shower Diverter With Chrome Plate Metal Handles, Threaded Chrome Plate Die Cast Spout and Chrome Plate Brass Showerhead, Arm & Flange, IPS Connection

1 12 68.15



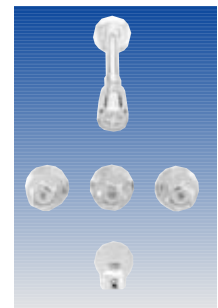
TNS-782



TNS-782T



TNS-782S



TNS-783



MATCO-NORCA
MODEL #

SIZE &
DESCRIPTION

INNER
CARTON
QUANTITY

MASTER
CARTON
QUANTITY

LIST
PRICE



RQ-400



RQ

**RESTAURANT QUALITY FAUCETS - HEAVY DUTY
DECK MOUNT**

RQ-400

4" Chrome Plate Deck Mount,
Metal Lever Handles,
Gooseneck Spout (Bar Faucet)

1

24

37.00

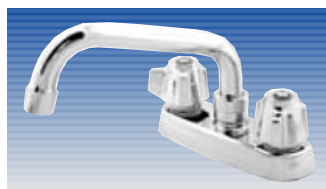
RQ-406

4" Chrome Plate Deck Mount,
Metal Lever Handles,
With 6" Swing Spout

1

24

37.50



RQ-412



RQ-412

Same As Above
With 12" Swing Spout

1

24

39.95

RQ

**RESTAURANT QUALITY FAUCETS - HEAVY DUTY
WALL MOUNT**



RQ--808



RQ-808

8" Chrome Plate Wall Mount,
Metal Lever Handles,
8" Cast Brass Spout

1

24

55.30

RQ-812

Same As Above
With 12" Cast Brass Spout

1

24

58.30

RQ-816

Same As Above
With 16" Cast Brass Spout

1

12

60.85

FT

KITCHEN WALL MOUNT FAUCET



FT-306



FT-306

8" Chrome Plate Wall Mount,
Metal Handles, 6" Cast Spout,
With Soap Dish

1

24

49.00

FT-308

Same As Above With
8" Cast Spout

1

24

51.00

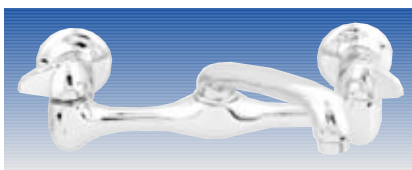
FT-312

Same As FT-306 With
12" Tubular Spout

1

24

49.00



FT-375



FT-375

8" Chrome Plate Wall Mount,
Metal Handles, 6" Cast Spout,
Adjustable From 7" - 9",
Less Soap Dish

1

24

48.00

FT-375SD

Same As Above,
With Soap Dish

1

24

52.00

MATCO-NORCA
MODEL #

SIZE &
DESCRIPTION

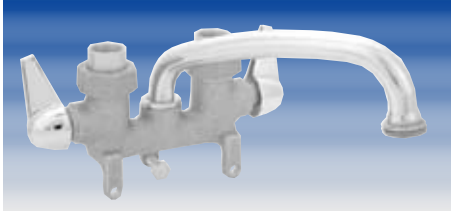
INNER
CARTON
QUANTITY

MASTER
CARTON
QUANTITY

LIST
PRICE

FY

LAUNDRY FAUCET



FY-980

Rough Brass
Laundry Tray Faucet

1

24

36.50



FY-980



FY-985

4" Chrome Plate Laundry Tray Faucet,
Metal Handles, 6" Spout,
Aerator and Hose Adapter

1

24

28.50



FY-986

Same As Above,
With 8" Spout

1

24

30.50

FY-987

Same As Above,
With 12" Spout

1

24

31.80



FY-985

HOSE ADAPTER

FY-999WB

4" CP Laundry Tray Faucet
Washerless, 6" Spout,
Wrist Blade Handles

1

12

46.00

FY

DRINKING WATER FAUCET



FY-930

Drinking Water Faucet

1

24

21.00



FY-930

FT

**SERVICE SINK (UTILITY) FAUCET HEAVY DUTY
CHROME PLATE BRASS SATIN FINISH**



FT-350

Service Sink Faucet With
Vacuum Breaker, Wall Bracket,
Bucket Hook,
And Integral Stops

1

8

148.00

FT-350

MATCO-NORCA
MODEL #

SIZE &
DESCRIPTION

INNER
CARTON
QUANTITY

MASTER
CARTON
QUANTITY

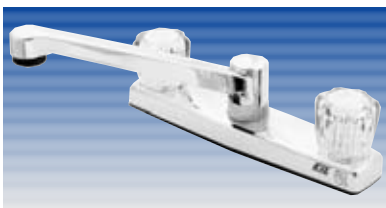
LIST
PRICE



NM-800

NM NON METALLIC FAUCET - LAVATORY - IAPMO

NM-800	4" Chrome Plate Lavatory Faucet, Acrylic Handles, Less Pop Up	1	12	14.74
NM-850	Same As Above, With Pop Up	1	12	18.44



NM-300

NM NON METALLIC FAUCET - KITCHEN - IAPMO

NM-300	8" Chrome Plate Kitchen Faucet, Acrylic Handles, Less Spray	1	12	20.27
NM-310	Same As Above, With Spray	1	12	29.48



NM-600

NM NON METALLIC FAUCET - TUB & SHOWER - IAPMO

NM-600	Chrome Plate Tub & Shower, Acrylic Handles, Arm, Flange, With Diverter Spout	1	12	34.85
NM-620	CP Shower Only, Acrylic Handles with Head, Arm, Flange	1	12	20.83



NM-985

NM NON METALLIC FAUCET - BAR & LAUNDRY - IAPMO

NM-985	4" Chrome Plate Laundry Faucet, Acrylic Handles	1	12	19.19
---------------	---	---	----	-------



NM-990

NM-990	4" Chrome Plate Bar Faucet, Acrylic Handles	1	12	19.30
---------------	---	---	----	-------

MATCO-NORCA
MODEL #

SIZE &
DESCRIPTION

INNER
CARTON
QUANTITY

MASTER
CARTON
QUANTITY

LIST
PRICE

SUNFLOWER

S

SHOWER HEAD - SUNFLOWER - RUBBER JETS - 1/2" IPS



S-800

S-800

6" Sunflower Showerhead
With Rubber Jets And
Chrome Plate Shower Arm

1

6

81.10



S-900

S

SHOWER HEAD - SUNFLOWER - BRASS JETS - 1/2" IPS

S-900

8" Sunflower Showerhead
With Brass Jets And
Chrome Plate Shower Arm

1

6

137.40

S-900S

Same As Above
With Satin Nickel Finish

1

6

67.50

S-900ORB

Same As Above
With Oil Rubbed Bronze Finish

1

6

187.30



S-800H

S

SHOWER HEAD - SUNFLOWER - RUBBER JETS - 1/2" IPS

S-800H

6" Sunflower Showerhead Only
With Rubber Jets

1

6

39.93



S-900H

S

SHOWER HEAD - SUNFLOWER - BRASS JETS - 1/2" IPS

S-900H

8" Sunflower Showerhead Only
With Brass Jets

1

6

93.90

S-900HS

Same As Above
With Satin Nickel Finish

1

6

119.00

S-900HORB

Same As Above
With Oil Rubbed Bronze Finish

1

6

138.00

MATCO-NORCA
MODEL #

SIZE &
DESCRIPTION

INNER
CARTON
QUANTITY

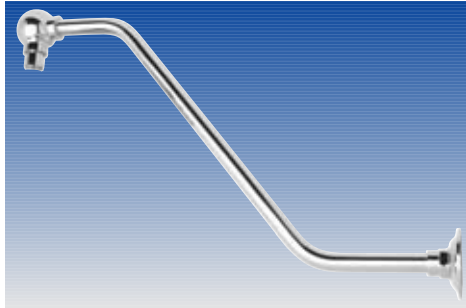
MASTER
CARTON
QUANTITY

LIST
PRICE

SUNFLOWER

S

SHOWER HEAD - SUNFLOWER - BRASS JETS - 1/2" IPS



S-ARM-C

MATCO-NORCA MODEL #	SIZE & DESCRIPTION	INNER CARTON QUANTITY	MASTER CARTON QUANTITY	LIST PRICE
S-ARM-C	Chrome Plate Sunflower Shower Arm Only	1	6	43.50
S-ARM-S	Same As Above With Satin Nickel Finish	1	6	48.50
S-ARM-ORB	Same As Above With Oil Rubbed Bronze Finish	1	6	49.30
S-ARM90-C	Chrome Plate 90° Sunflower Shower Arm Only	1	6	25.00



S-050

S

SHOWER HEAD - MISER - 1/2" IPS

S-050	Miser Showerhead - 1"	1	200	4.40
--------------	-----------------------	---	-----	------



S-051

S-051	Miser Showerhead - 1" with Shut-Off	1	200	6.50
--------------	-------------------------------------	---	-----	------



S-100

S

SHOWER HEAD - BALLJOINT - 1/2" IPS

S-100	Balljoint Showerhead - 2"	1	200	1.80
--------------	---------------------------	---	-----	------



S-400



S-500



S-550

MATCO-NORCA MODEL #

SIZE & DESCRIPTION

INNER CARTON QUANTITY

MASTER CARTON QUANTITY

LIST PRICE

S

SHOWER HEAD - ADJUSTABLE - 1/2" IPS

S-400	Adjustable Showerhead - 2"	10	100	10.28
S-500	Adjustable Showerhead - 3"	10	50	16.03
S-550	Adjustable Showerhead - 4"	1	20	42.84

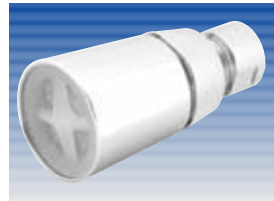


S-105

S

PLASTIC SHOWER HEAD - 1/2" IPS

S-105	Plastic Showerhead With Chrome Plate Brass Ball	1	200	4.30
--------------	---	---	-----	------



S-106

S

ZINC DIE CAST SHOWER HEAD - 1/2" IPS

S-106	Chrome Plate Zinc Die Cast Showerhead	1	200	6.30
--------------	---------------------------------------	---	-----	------



S-150

S

ZINC DIE CAST SHOWER HEAD - 1/2" IPS

S-150	Chrome Plate Plain Showerhead 1-1/2"	1	100	4.86
--------------	--------------------------------------	---	-----	------



S-200



S-300

S

ZINC DIE CAST SHOWER HEAD - 1/2" IPS

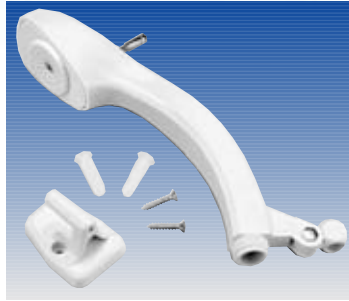
S-200	Adjustable Showerhead With Plastic Outlet - 2"	1	100	9.05
S-300	Adjustable Showerhead With Plastic Outlet - 3"	1	100	14.88

	MATCO-NORCA MODEL #	SIZE & DESCRIPTION	INNER CARTON QUANTITY	MASTER CARTON QUANTITY	LIST PRICE
M SHOWER HEADS					
1/2" IPS					
	M100	4" Massage Shower Head	1	48	10.61
	M150	CP Massage Shower Head - Fixed	3	24	14.91
	M250	2-1/2" Massage Shower Head	1	100	11.33
	M200	Hand Held 4" Massage Shower Head with Stainless Steel Hose	1	24	21.74
	M210	Replacement Bracket for M200	1	200	3.24
	M300	CP Massage Hand Shower w/Hose	1	3	30.87



AS

M	SHOWER HEADS - HAND HELD MODELS	ECONOMY
AS	Complete Kit-Shower w/Shut Off, Wall Bracket and 59" Stainless Steel Hose	1 24 19.90
B848PAR	Hand Held Shower and Bracket, Parchment	10 100 8.46
BKT-WHT	Hand Held Shower Bracket Only, White	1 500 1.48
BKT-PAR	Hand Held Shower Bracket Only, Parchment	1 500 1.48



W848SO

MATCO-NORCA
MODEL #

SIZE &
DESCRIPTION

INNER
CARTON
QUANTITY

MASTER
CARTON
QUANTITY

LIST
PRICE

M

SHOWER HEADS - HAND HELD MODELS

ECONOMY

W848SO

Hand Held Shower
and Bracket, White

10

100

8.46



CP59

CP-VHW

ACCESSORIES FOR HAND HELD SHOWERS (ANY MAKE)

Shower Hose With Chrome Plate Brass Nuts
1/2" FIP x 1/2" FIP

CP59

Stainless Steel 59"

1

100

8.96

CP72

Stainless Steel 72"

1

100

10.62

VHW59

Reinforced Vinyl 59" - White

1

100

5.74

VHW72

Reinforced Vinyl 72" - White

1

100

6.30

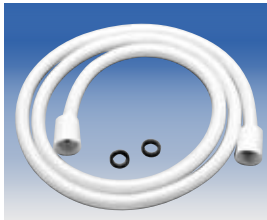
VHW96

Reinforced Vinyl 96" - White

1

100

7.18



VHW59



DV841

DV

ACCESSORIES - DIVERTER FOR HAND HELD SHOWER

DV841

Lever Handle CP Brass

10

100

9.89

DV842

Push Button
CP ABS Plastic

1

500

2.59



DV842



VC 841

VC

ACCESSORIES - VOLUME CONTROL & SHUT OFF

VC841

Chrome Plated Brass

20

200

6.51

MATCO-NORCA
MODEL #

SIZE &
DESCRIPTION

INNER
CARTON
QUANTITY

MASTER
CARTON
QUANTITY

LIST
PRICE



S-AB6



S-AB6F



JCR-650



FB-101



FY-801



FY-800SO

S - JCR

ACCESSORIES - SHOWER ARM & FLANGE

MATCO-NORCA MODEL #	SIZE & DESCRIPTION	INNER CARTON QUANTITY	MASTER CARTON QUANTITY	LIST PRICE
S-AB6	Chrome Plated Brass 6" Shower Arm	10	200	3.60
S-AB6F	Chrome Plated Brass 6" Shower Arm With Flange	10	200	3.61
S-AB8	Chrome Plated Brass 8"	10	200	3.56
S-AB8F	Chrome Plated Brass 8" Shower Arm With Flange	10	200	4.55
JCR-650	Shower Rod Holder (Jiffy)	1	200	1.04

FY

TUB SPOUTS

MATCO-NORCA MODEL #	SIZE & DESCRIPTION	INNER CARTON QUANTITY	MASTER CARTON QUANTITY	LIST PRICE
FB-101	3/4" x 1/2" Brass Face Bushing For Spout Reduction	1	1000	.85
FY-801	Chrome Plate Brass Diverter Spout - 3/4" FIP Inlet In Tail	1	48	22.70
FY-800SO	Chrome Plate Brass Diverter Spout - 3/4" FIP Inlet In Tail w/Side Outlet For Shower Hose	1	48	26.00

	MATCO-NORCA MODEL #	SIZE & DESCRIPTION	INNER CARTON QUANTITY	MASTER CARTON QUANTITY	LIST PRICE
FY TUB SPOUTS					
	FY-801DC	Chrome Plate Die Cast Diverter Spout 1/2" FIP Inlet In Nose	1	48	6.20
	FY-801DCS	Same As Above, Brushed Nickel Finish	1	48	21.20
	FY-801B	Same As Above, Brass Finish	1	48	20.32
	FY-802	Chrome Plate Brass Diverter Spout 1/2" FIP Inlet In Tail	1	48	26.00
	FY-802S	Same As Above With Brushed Nickel Finish	1	48	31.50
	FY-803DC	Chrome Plate Die Cast Tub Spout 1/2" FIP Inlet In Nose	1	50	5.21
	FY-804DC	Chrome Plate Die Cast Diverter Spout Slip On For 1/2" Copper Tubing	1	50	8.90
	FY-804DCS	Same As Above With Brushed Nickel Finish	1	50	23.50
	FY-805DC	Chrome Plated Die Cast Diverter Spout With Decorative Ring Slip on for 1/2" Copper Tubing	1	50	14.99
	FY-805DCS	Same As Above With Brushed Nickel Finish	1	50	32.25
	FY-805DCORB-C	Oil Rubbed Bronze Diverter Spout With Decorative Ring - For Color Match To Crescendo Series	1	50	30.00
	FY-805DCORB-P	Same as above - For Color Match To Portia Series	1	50	30.00

MATCO-NORCA
MODEL #

SIZE &
DESCRIPTION

INNER
CARTON
QUANTITY

MASTER
CARTON
QUANTITY

LIST
PRICE

FY TUB SPOUTS



FY-806DCL

FY-806DCL	1/2" Chrome Plated Slip On Diverter Spout 5-3/4" Long Die Cast *Ideal for Garden Tub	1	50	11.00
------------------	--	---	----	-------



25-1001



25 SUPPLY VALVES - QUARTER TURN - ANGLE

25-1001	Quarter Turn Chrome Plate 3/8 FIP X 3/8 OD Comp	24	144	4.52
----------------	--	----	-----	------



25-1003

25-1003	Quarter Turn Chrome Plate 1/2 FIP x 3/8 OD Comp	24	144	4.88
----------------	--	----	-----	------



25-1009

25-1009	Quarter Turn Chrome Plate 1/2 SWT x 3/8 OD Comp	24	144	4.52
----------------	--	----	-----	------



25-1019

25-1019	Quarter Turn Chrome Plate 1/2 NOM Comp x 3/8 OD Comp	24	144	5.04
----------------	--	----	-----	------

MATCO-NORCA
MODEL #

SIZE &
DESCRIPTION

INNER
CARTON
QUANTITY

MASTER
CARTON
QUANTITY

LIST
PRICE

25

SUPPLY VALVES - QUARTER TURN - STRAIGHT



25-1002



25-1002

Quarter Turn Chrome Plate
3/8 FIP x 3/8 OD Comp

24

144

4.52



25-1004

25-1004

Quarter Turn Chrome Plate
1/2 FIP x 3/8 OD Comp

24

144

4.88



25-1010

25-1010

Quarter Turn Chrome Plate
1/2 SWT x 3/8 OD Comp

24

144

4.52



25-1014

25-1014

Quarter Turn Chrome Plate
1/2 NOM Comp x 3/8 OD Comp

24

144

5.04



25-2000

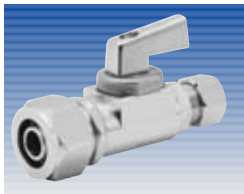
25-2000

Quarter Turn Chrome Plate Retro-Fit
3/8 OD Captured Nut
x 3/8 OD Comp

24

144

5.25



25-1014UV



25

SUPPLY VALVES - UNIVERSAL - 1/4 TURN

25-1014UV

Quarter Turn Universal CP
1/2" OD Comp x 3/8" NOM
Comp-Straight

24

144

6.55



25-1019UV

25-1019UV

Quarter Turn Universal CP
1/2" OD Comp x 3/8" NOM
Comp-Angle

24

144

6.55

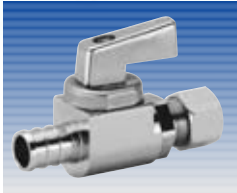
MATCO-NORCA
MODEL #

SIZE &
DESCRIPTION

INNER
CARTON
QUANTITY

MASTER
CARTON
QUANTITY

LIST
PRICE



25-1004PX



25 SUPPLY VALVES - PEX CONNECTORS - 1/4 TURN

25-1003PX 1/2" PEX x 3/8" OD
Angle 24 144 4.55



25-1003PX

25-1004PX 1/2" PEX x 3/8" OD
Straight 24 144 4.55



26-1002



26 SUPPLY VALVES - OVAL HANDLE - 1/4 TURN - STRAIGHT

26-1002 3/8" FIP x 3/8" OD
Compression 24 144 3.62



26-1004

26-1004 1/2" FIP x 3/8" OD
Compression 24 144 3.44



26-1010

26-1010 1/2" Sweat x 3/8" OD
Compression 24 144 3.85



26-1014

26-1014 5/8" OD Compression x
3/8" OD Compression 24 144 4.40



26-1003PX



26 SUPPLY VALVES - OVAL HANDLE - 1/4 TURN - PEX

26-1003PX 1/2" PEX x 3/8" OD
Compression - Angle 24 144 3.99



26-1004PX

26-1004PX 1/2" PEX x 3/8" OD
Compression - Straight 24 144 3.86

MATCO-NORCA
MODEL #

SIZE &
DESCRIPTION

INNER
CARTON
QUANTITY

MASTER
CARTON
QUANTITY

LIST
PRICE



26-1001



26-1003



26-1009



26-1019



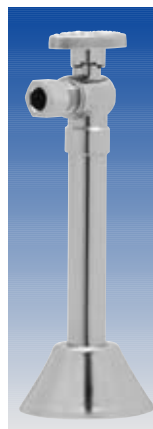
26

SUPPLY VALVES - OVAL HANDLE - 1/4 TURN - ANGLE

MATCO-NORCA MODEL #	SIZE & DESCRIPTION	INNER CARTON QUANTITY	MASTER CARTON QUANTITY	LIST PRICE
26-1001	3/8" FIP x 3/8" OD Compression	24	144	3.81
26-1003	1/2" FIP x 3/8" OD Compression	24	144	3.67
26-1009	1/2" Sweat x 3/8" OD Compression	24	144	4.18
26-1019	5/8" OD Compression x 3/8" OD Compression	24	144	4.40



26-1040



26-1041



26

SUPPLY VALVES - OVAL HANDLE - 1/4 TURN - PEX

MATCO-NORCA MODEL #	SIZE & DESCRIPTION	INNER CARTON QUANTITY	MASTER CARTON QUANTITY	LIST PRICE
26-1040	1/2" Sweat x 3/8" OD Compression With 5" Chrome Plate Tube And Extension - Straight	24	144	6.75
26-1041	Same As Above - Angle	24	144	6.75

MATCO-NORCA
MODEL #

SIZE &
DESCRIPTION

INNER
CARTON
QUANTITY

MASTER
CARTON
QUANTITY

LIST
PRICE



26-2001



26

SUPPLY VALVES - OVAL HANDLE - 1/4 TURN - DUAL VALVE

26-2001	5/8" OD Compression x 3/8" OD Compression	24	144	6.46
----------------	--	----	-----	------



29-1003PX



29

SUPPLY VALVES - COMPRESSION - FOR PEX TUBE

29-1003PX	CP 1/2" PEX x 3/8" OD Compression - Angle	10	200	3.10
------------------	--	----	-----	------



29-1004PX

29-1004PX	CP 1/2" PEX x 3/8" OD Compression - Straight	10	200	3.53
------------------	---	----	-----	------



29-2001PX

29-2001PX	CP 1/2" PEX x 3/8" OD Compression - x 3/8" OD Comp - Angle	10	200	5.05
------------------	--	----	-----	------

29

SUPPLY VALVES - COMPRESSION - ANGLE

29-1001	CP 3/8" FIP x 3/8" OD Compression	10	200	2.59
----------------	--------------------------------------	----	-----	------



29-1001

29-1003	CP 1/2" FIP x 3/8" OD Compression	10	200	2.79
----------------	--------------------------------------	----	-----	------



29-1003B

29-1003B	Same As Above, Unplated	10	200	2.69
-----------------	-------------------------	----	-----	------

29-1009	CP 1/2" SWT x 3/8" OD Compression	10	200	3.03
----------------	--------------------------------------	----	-----	------



29-1009

29-1009B	Same As Above, Unplated	10	200	2.94
-----------------	-------------------------	----	-----	------



29-1001



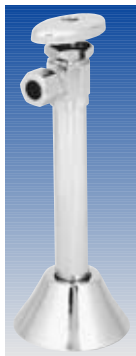
29-1003B



29-1009



29-1019



29-1040



29-2001



29-2001B

MATCO-NORCA
MODEL #

SIZE &
DESCRIPTION

INNER
CARTON
QUANTITY

MASTER
CARTON
QUANTITY

LIST
PRICE

29

SUPPLY VALVES - COMPRESSION - ANGLE

29-1001	CP 3/8" FIP X 3/8" OD Compression	10	200	2.59
29-1003	CP 1/2" FIP x 3/8" OD Compression	10	200	2.79
29-1003B	Same As Above, Unplated	10	200	2.69
29-1009	CP 1/2" SWT x 3/8" OD Compression	10	200	3.03
29-1009B	Same As Above, Unplated	10	200	2.94

29

SUPPLY VALVES - COMPRESSION - ANGLE

29-1019	CP 5/8" OD Compression x 3/8" OD Compression	10	200	3.23
29-1019B	Same As Above - Unplated	10	200	3.14
29-1040	CP 1/2" SWT x 3/8" OD Compression w/5" Extension and Bell Escutcheon	1	100	4.95



29

SUPPLY VALVES - DUAL OUTLET - ANGLE

29-2001	CP 5/8" OD x 3/8" OD x 3/8" OD	10	200	4.45
29-2001B	Same As Above - Unplated	10	200	4.36





29-2050



MATCO-NORCA
MODEL #

SIZE &
DESCRIPTION

INNER
CARTON
QUANTITY

MASTER
CARTON
QUANTITY

LIST
PRICE

29

SUPPLY VALVES - FLARE OUTLET - ANGLE

29-2050	CP 1/2" FIP x 3/8" OD Flare	10	200	2.89
29-2060	CP 1/2" FIP x 1/2" OD Flare	10	200	3.58
29-2070	CP 3/8" FIP x 3/8" OD Flare	10	200	3.16



29-1301



29

SUPPLY VALVES - SLIP JOINT OUTLET - ANGLE

29-1301	CP 1/2" FIP Inlet 1/2" x 7/16" Rubber S.J. Outlet	10	200	3.46
----------------	--	----	-----	------



29-1341

29-1341

CP 5/8" FIP Inlet 1/2" x 7/16" Rubber S.J. Outlet	10	200	3.59
--	----	-----	------



29-1342

29

SUPPLY VALVES - SLIP JOINT OUTLET - STRAIGHT

29-1342	CP 5/8" OD Comp Inlet 1/2" & 7/16" Rubber S.J. - Outlet	10	200	4.13
----------------	--	----	-----	------



MATCO-NORCA
MODEL #

SIZE &
DESCRIPTION

INNER
CARTON
QUANTITY

MASTER
CARTON
QUANTITY

LIST
PRICE



29-1004



29

SUPPLY VALVES - COMPRESSION - STRAIGHT

29-1002

CP 3/8" FIP
x 3/8" OD Compression

10

200

2.89



29-1004

CP 1/2" FIP
x 3/8" OD Compression

10

200

3.13



29-1010B

29-1010

CP 1/2" SWT
x 3/8" OD Compression

10

200

3.42

29-1010

29-1010B

Same As Above - Unplated

10

200

3.33



29-1014

29-1014

CP 5/8" OD Compression
x 3/8" OD Compression

10

200

3.76

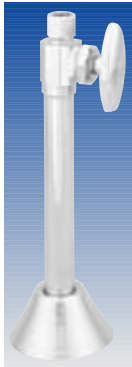
29-1020

CP 1/2" OD Compression
x 3/8" OD Compression

10

200

3.76



29-1041

29-1041

CP 1/2" SWT x 3/8" OD
Compression With 5" Extension
and Bell Escutcheon

10

100

5.64



29-1575

29-1575

CP 5/8" OD Compression
x 5/8" OD Compression

10

200

4.16



29-2051



29

SUPPLY VALVES - COMPRESSION - STRAIGHT

29-2051

CP 1/2" FIP
x 3/8" OD Flare

10

200

3.59

29-2061

CP 1/2" FIP
x 1/2" OD Flare

10

200

3.77

29-2071

CP 3/8" FIP
x 3/8" OD Flare

10

200

3.28

29-1219B

Unplated 1/2" SWT
x 3/8" OD Flare

10

200

3.77



29-1219B

29-1239

CP 1/2" SWT
x 1/2" OD Flare

10

200

3.77



29-1001N



29-1009N



29-1019N

MATCO-NORCA
MODEL #

SIZE &
DESCRIPTION

INNER
CARTON
QUANTITY

MASTER
CARTON
QUANTITY

LIST
PRICE

29

SUPPLY VALVES - MULTI TURN - ECONOMY PATTERN - ANGLE

MATCO-NORCA MODEL #	SIZE & DESCRIPTION	INNER CARTON QUANTITY	MASTER CARTON QUANTITY	LIST PRICE
29-1001N	CP 3/8" FIP Inlet x 3/8" OD Compression	10	200	2.31
29-1003N	CP 1/2" FIP x 3/8" OD Compression	10	200	2.52
29-1009N	CP 1/2" NOM SWT Inlet x 3/8" OD Compression	10	200	2.52
29-1019N	CP 5/8" OD Comp x 3/8" OD Compression	10	200	2.73

RH

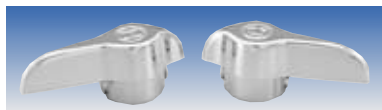
FAUCETS & SHOWER HANDLE OPTIONS



RH-830WB



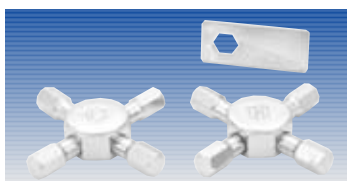
RH-7280



RH-7290



RH-8000



437100

MATCO-NORCA MODEL #	SIZE & DESCRIPTION	INNER CARTON QUANTITY	MASTER CARTON QUANTITY	LIST PRICE
RH-830WB	Wrist Blade Handles, Pair, For FT-300 & CT-800	10	48	16.75
RH-7280	"Jaws" Fit All Replacement, Pair, Cross Handle	10	100	5.41
RH-7290	"Jaws" Fit All Replacement, Pair, Lever Handle	10	100	4.85
RH-8000	"Jaws" Fit All Replacement, Pair, Acrylic Handle	10	100	8.51
437100	Chrome Plate Brass, Pair, Cross Handle with Wrench	10	100	6.94

	MATCO-NORCA MODEL #	SIZE & DESCRIPTION	INNER CARTON QUANTITY	MASTER CARTON QUANTITY	LIST PRICE
RH FAUCETS & SHOWER HANDLE OPTIONS					
	438100	Chrome Plate Brass, Pair, Lever Handle with Wrench	1	100	6.94
	PP-150	Replacement Handles, Pair, For Price Pfister Style Lavatories & Kitchens	1	200	3.92
	PP-300	Replacement Handles, Pair, For Price Pfister Style Shower	1	200	5.53
	GH-100	Replacement Handle, Pair, For Gerber Style Faucet (old)	25	250	4.47
	GH-150	Replacement Handle, Pair, For Gerber Style Faucet	1	50	3.92
	GH-300	Replacement Handle, Pair, For Gerber Tub & Shower	1	50	6.27
	GH-300S	Replacement Handle, Pair, For Gerber Tub & Shower, Short Broach, Recessed Spline	1	50	6.04
STM FAUCETS & SHOWER STEM OPTIONS					
Faucet Stems					
	STMG-15H	Gerber Style Faucet Stem - Hot	100	400	1.95
	STMG-15C	Gerber Style Faucet Stem - Cold	100	400	1.95

MATCO-NORCA
MODEL #

SIZE &
DESCRIPTION

INNER
CARTON
QUANTITY

MASTER
CARTON
QUANTITY

LIST
PRICE



STMG-23



STMG-0458



STMP-78



STMP-79D



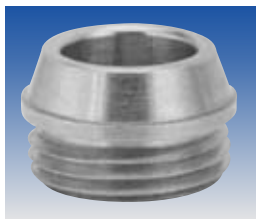
STMY-39C



STMC-27

STM SHOWER VALVE STEM OPTIONS

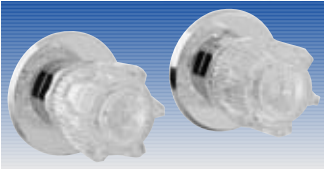
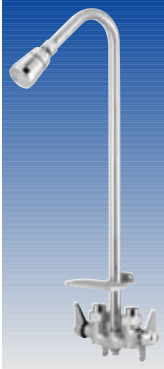



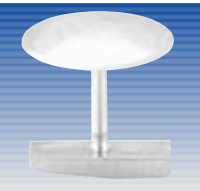

STMG-23	Gerber Style Stem For Tub & Shower	25	100	4.70
STMG-0458	Gerber Style Stem Shower Diverter	25	100	6.32
STMP-78	Price Pfister Style Tub & Shower Stem For TNS-782, TNS-783	25	100	5.93
STMP-79D	Price Pfister Style Shower Diverter Stem For TNS-783	25	100	6.37
STMY-39C	Savoy Style Shower Stem and C.P. Sleeve	25	100	7.55
STMC-27	Central Style Tub & Shower	25	100	4.92

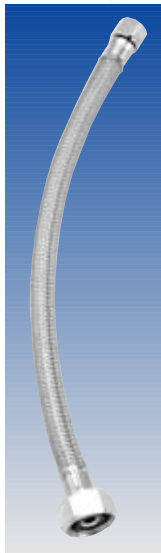


GS-100

GS FAUCET SEATS AND TRIM

GS-100	Gerber Style Faucet Seat - Fits Lavatory and Tub & Shower Faucets	100	3000	.35
---------------	---	-----	------	-----

	MATCO-NORCA MODEL #	SIZE & DESCRIPTION	INNER CARTON QUANTITY	MASTER CARTON QUANTITY	LIST PRICE
 SSV-338	SSV SHOWER STALL VALVE				
	SSV-338	3-3/8" Shower Stall - Valve Only	1	24	23.60
 UTF-3	UTF SHOWER STALL VALVE				
	UTF-3	Utility Shower Faucet - Complete	1	6	53.50
 IS-23	IS INTEGRAL STOP - SLOTTED				
	IS-23	1/2" MIP x 1/2" FIP	10	200	5.03
 IS-24	IS-24	1/2" MIP x 1/2" SWT	10	200	4.92
	MISC PARTS AND ACCESSORIES				
 AIR-1516	AIR-1516	15/16" 2 G.P.M. Aerator Fits Male & Female	100	1000	1.05
	 CH-175	CH-175	Cock Hole Cover 1-7/8"	1	500
 SW-100		SW-100	5 Piece Plumber's Socket Wrench Set	1	20



SSF-12

MATCO-NORCA
MODEL #

SIZE &
DESCRIPTION

INNER
CARTON
QUANTITY

MASTER
CARTON
QUANTITY

LIST
PRICE

SSF

SUPPLY HOSE - STAINLESS STEEL

FOR SINK

3/8" Comp x 1/2" FIP



SSF-12	12" Long	25	100	3.12
SSF-20	20" Long	25	100	4.86
SSF-30	30" Long	25	100	6.16
SSF-36	36" Long	30	60	6.96



Nut & Ferrule

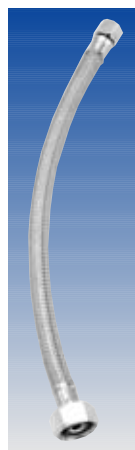
DDF-12

DDF

SUPPLY HOSE - DELTA STYLE



DDF-12	3/8" Comp x 3/8" Comp w/Nut & Ferrule x 12" Long	25	100	4.52
DDF-20	3/8" Comp x 3/8" Comp w/Nut & Ferrule x 20" Long	25	100	5.51
Economy				
DDF-12N	3/8" Comp x 3/8" Comp w/Nut & Ferrule x 12" Long	10	100	3.83
DDF-20N	3/8" Comp x 3/8" Comp w/Nut & Ferrule x 20" Long	10	100	4.44



SSF-12N

SSF

SUPPLY HOSE - STAINLESS STEEL - ECONOMY

FOR SINK

ECONOMY

3/8" Comp x 1/2" FIP

SSF-12N	12" Long	10	100	3.14
SSF-20N	20" Long	10	100	3.91
SSF-30N	30" Long	10	100	4.94
SSF-36N	36" Long	10	100	5.59

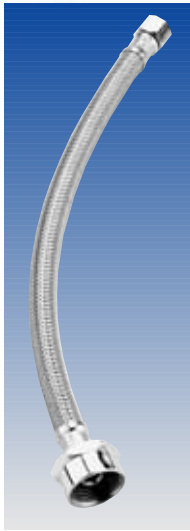
MATCO-NORCA
MODEL #

SIZE &
DESCRIPTION

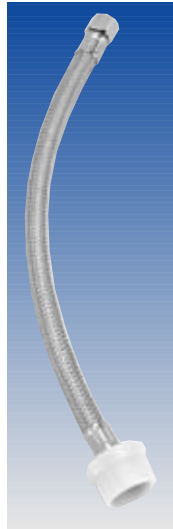
INNER
CARTON
QUANTITY

MASTER
CARTON
QUANTITY

LIST
PRICE



SST-12M



SST-12P

SST

SUPPLY HOSE - STAINLESS STEEL

FOR CLOSET

3/8" Comp x 7/8"

SST-09M	9" Long - Metal Nut	25	100	4.11
SST-12M	12" Long - Metal Nut	25	100	4.52
SST-20M	20" - Metal Nut	25	100	5.46
SST-30M	30" Long - Metal Nut	25	100	6.42
SST-09P	9" Long - Plastic Nut	25	100	3.71
SST-12P	12" Long - Plastic Nut	25	100	3.81

ECONOMY

3/8" Comp x 7/8"

SST-09PN	9" Long - Plastic Nut	10	100	3.07
SST-09MN	9" Long - Metal Nut	10	100	3.26
SST-12PN	12" Long - Plastic Nut	10	100	3.20
SST-12MN	12" Long - Metal Nut	10	100	3.63
SST-20MN	20" Long - Metal Nut	10	100	4.38

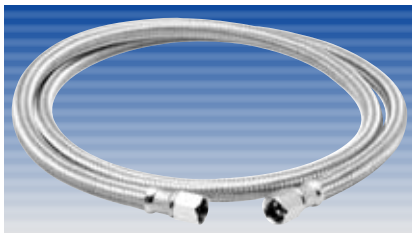


SSWM

SSWM

SUPPLY HOSE - WASHING MACHINE

SSWM-48	48" Stainless Steel Braided Washing Machine Connector	1	60	13.99
SSWM-60	60" Stainless Steel Braided Washing Machine Connector	1	50	15.94
SSWM-72	72" Stainless Steel Braided Washing Machine Connector	1	30	18.07



SSDW

SSDW

SUPPLY HOSE - DISHWASHER

WITH 90° BRASS ELBOW

SSDW-36	36" Stainless Steel Braided Dishwasher Connector	1	50	9.35
SSDW-48	48" Stainless Steel Braided Dishwasher Connector	1	40	11.36
SSDW-60	60" Stainless Steel Braided Dishwasher Connector	1	30	13.48
SSDW-72	72" Stainless Steel Braided Dishwasher Connector	1	30	15.61

	MATCO-NORCA MODEL #	SIZE & DESCRIPTION	INNER CARTON QUANTITY	MASTER CARTON QUANTITY	LIST PRICE
SS SINK STRAINERS FIT SINKS WITH 3-1/2" - 4" OPENINGS					
	SS-100	Stainless Steel Sink Strainer 4-1/2"	1	50	5.24
	SS-102S	Stamped Brass, 4-1/2" Brushed Nickel finish	1	50	14.90
	SS-105	Stainless Steel Sink Strainer With Wing Nuts 4-1/2"	1	50	7.77
	SS-111	Stainless Steel Sink Strainer 4-1/2 Double Cup, Economy	1	50	7.07
	SS-112	Stainless Steel Sink Strainer Double Cup 4-1/2"	1	50	10.43
	SS-145	Stainless Steel Sink Strainer, Basket With Spring Clip for Positive Water Seal, Extra Heavy 3-3/8" Rubber Washer	1	50	8.90
SS BRASS BODY SINK STRAINERS FIT SINKS WITH 3-1/2" - 4" OPENINGS					
	SS-125	Chrome Plated, Stamped Brass 4-1/2"	1	50	11.28
	SS-175	Chrome Plated, Cast Brass 4-1/2"	1	25	17.55

	MATCO-NORCA MODEL #	SIZE & DESCRIPTION	INNER CARTON QUANTITY	MASTER CARTON QUANTITY	LIST PRICE
SS SINK STRAINERS FIT SINKS WITH 3-1/2" - 4" OPENINGS					
	SS-185B	Stainless Steel Double Cup Duo Strainer Snaploc Basket	1	50	14.78
	SS-195	Stainless Steel Twist 'n Seal 4-1/2"	1	50	12.03
	SS-150	Stainless Steel Clad Plastic 4-1/2"	1	50	3.76
	SS-400	Stainless Steel Flat Top Strainer 4-1/2" (Sink or Shower Stall)	1	50	6.67
SS SINK STRAINERS FIT SINKS WITH 1-7/8" - 2-1/2" OPENINGS					
	SS-600	Stainless Steel Junior Strainer 2-1/2"	1	100	4.21
	SS-605	Chrome Plated Brass Junior Duo Strainer, Deep Pattern	1	100	13.03
	SS-200	Stainless Steel Duplex (W/Grid) 2-1/2"	1	100	4.01
	SS-300	Stainless Steel Wash Tray (w/Rubber Stopper) 2-1/2"	1	100	3.71

MATCO-NORCA
MODEL #

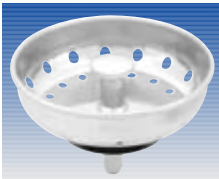
SIZE &
DESCRIPTION

INNER
CARTON
QUANTITY

MASTER
CARTON
QUANTITY

LIST
PRICE

SS REPLACEMENT INSERTS FOR STRAINERS



SS-500

SS-500

Fit All Basket With Rubber Seat
(Plastic Post)
For 4-1/2" Strainer

1

100

1.81



SS-500M

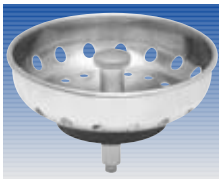
SS-500M

Fit All Basket With Rubber Seat
(Metal Post)
for 4-1/2" Strainer

1

100

2.51



SS-502S

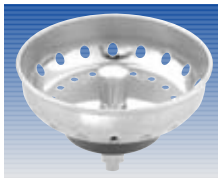
SS-502S

Replacement Basket
For SS-102S,
Brushed Nickel Finish

1

100

4.95



SS-510

SS-510

Replacement Basket
For SS-100 & SS-111

1

200

1.41



SS-512

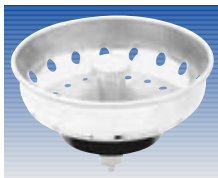
SS-512

Replacement Basket
For SS-112

1

100

2.21



SS-525

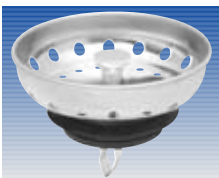
SS-525

Replacement Basket
For SS-125

1

100

2.26



SS-545

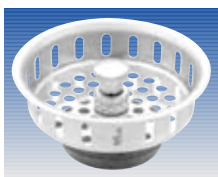
SS-545

Replacement Basket
For SS-145

1

100

4.76



SS-575

SS-575

Replacement Basket
For SS-175

1







100

4.76

	MATCO-NORCA MODEL #	SIZE & DESCRIPTION	INNER CARTON QUANTITY	MASTER CARTON QUANTITY	LIST PRICE
SS REPLACEMENT INSERTS FOR STRAINERS					
	SS-595	Replacement Basket For SS-195	1	100	4.86
	SS-610	Replacement Basket For SS-600	1	100	1.10
	SS-615	Replacement Basket For SS-605	1	200	2.76
	SS-585	Replacement Basket For SS-185B	1	100	3.53
FY POP UPS & SINK DRAINS					
	FY-950	CP Brass Pop Up Assembly w/Lift Rod	1	48	10.50
	FY-951	CP Brass Pop Up Assembly IAPMO Approved	1	24	10.70
	FY-951S	Same As Above, Brushed Nickel Finish	1	24	11.70
	FY-951B	Same As Above, PVD Brass Finish	1	24	13.23
	FY-952	Pop Up Assembly, CP Brass With Plastic Tail Piece	1	48	10.34
	FY-975	CP Pop Up Assembly w/Lift Rod - ABS Tailpiece	1	50	5.39

	MATCO-NORCA MODEL #	SIZE & DESCRIPTION	INNER CARTON QUANTITY	MASTER CARTON QUANTITY	LIST PRICE
FY POP UPS & SINK DRAINS					
	FY-925	CP Brass 2 Piece P.O. Plug w/Chain & Stopper	1	50	8.20
	FY-935	1-1/4" x 8" CP Brass C.O. Plug 17 Guage w/Captured Stopper	1	48	9.50
	FY-155	CP Brass Grid Top P.O. Plug, 17 ga. 4" Tail piece	1	100	10.20
	FY-156	CP Brass Grid Top P.O. Plug, 17 ga. 6" Tail piece	1	100	10.78
	FY-159WC	CP Brass Grid Top P.O. Plug, 17 ga. Offset (Wheel Chair)	1	50	22.79
S SHOWER DRAINS - METAL					
	SDBC200	2" Brass Plated Die-Cast Shower Drain With Stainless Steel Grid and Quick Connect Rubber Gasket	1	40	10.82
	SDB2NC	2" Brass Body Shower Drain No Caulk, Stainless Steel Snap In Grid Wrench Included	1	20	12.50

	MATCO-NORCA MODEL #	SIZE & DESCRIPTION	INNER CARTON QUANTITY	MASTER CARTON QUANTITY	LIST PRICE
S SHOWER DRAINS - PLASTIC					
	SDP2WSS	2" White Plastic Shower Drain Quick Caulk, Stainless Steel Grid Wrench Included	1	40	6.36
	SDP2BSS	2" Black Plastic Shower Drain Quick Caulk, Stainless Steel Snap In Grid Wrench Included	1	40	6.36
	SDP2WSW	2" Solvent Weld Drain With White Plastic Shower Drain And Stainless Steel Grid	1	40	6.26
	SDPVC2	PVC Shower Drain, Adjustable Strainer, Stainless Steel Grid	1	1	10.80
DE BRONZE DROP EAR ELBOW					
	DE-0303	1/2" FIP x 1/2" SWT	25	250	1.75
	DE-0304	1/2" FIP x 3/4" SWT	25	250	2.26
	DE-0403	3/4" FIP x 1/2" SWT	25	250	2.76
	DE-0404	3/4" FIP x 3/4" SWT	25	250	2.76
WM WATER MIXER					
	WM300	Chrome Plate Water Mixer	1	100	14.50

MATCO-NORCA MODEL #	SIZE & DESCRIPTION	INNER CARTON QUANTITY	MASTER CARTON QUANTITY	LIST PRICE
FY BATHCOCK - FOR CLAWFOOT TUBS				
	FY-750 Chrome Plate Brass #0 Bath Faucet	1	24	22.85
FY-750				
	FY-775 Chrome Plate Brass #3 Bath Faucet	1	24	36.40
FY-775				
	FY-850 Chrome Plate Brass Code Pattern Bath Faucet	1	24	24.50
FY-850				
	BCL-050 Bath Cock Elbow 1/2" Union x 1/2" MIP (Pair)	1	72	6.02
BCL-050				
FY SINGLE BASIN FAUCETS				
	FY-700 CP Basin Faucet With Removable Seat Hot & Cold Buttons	6	72	11.10
FY-700				
	FY-700X CP Basin Faucet Extra Heavy Pattern With Aerator, Hot & Cold Buttons	1	30	23.15
FY-700X				

	MATCO-NORCA MODEL #	SIZE & DESCRIPTION	INNER CARTON QUANTITY	MASTER CARTON QUANTITY	LIST PRICE
	FY-690	CP Hose End Outlet 1/2" MIP Inlet	12	72	5.98
	FY-695	CP Hose End Outlet 3/4" MIP Inlet	12	72	6.20
	FY-691	CP Plain End Outlet 1/2" MIP Inlet	12	72	5.66
	FY-680	CP Hose End Outlet 1/2" FIP Inlet- Flanged	12	72	6.89
	FY-675	CP Plain End Outlet 1/2" FIP Inlet- Flanged	12	72	6.58
FY HOSE BIBB - BRASS - TEE HANDLES					
	FY-692	Rough Brass Plain Outlet 1/2" MIP Inlet	12	72	5.66
	FY-686	Rough Brass Hose End Outlet 1/2" FIP Inlet- Flanged	12	72	5.98
	FY-681	Chrome Plate Plain End Outlet 1/2" MIP Inlet Adjustable Flange	12	72	7.13
	FY-682	Chrome Plate Hose End Outlet 1/2" MIP Inlet Adjustable Flange	12	72	7.13

MATCO-NORCA
MODEL #

SIZE &
DESCRIPTION

INNER
CARTON
QUANTITY

MASTER
CARTON
QUANTITY

LIST
PRICE

SCV

SELF CLOSING FAUCETS AND VALVES



SCB-050

SCB-050

1/2" Self Closing Basin Faucet
Hot, Cold and Plain Button

1

36

44.11



SCV-054H

SCV-054H

1/2" Self Closing Bubbler Faucet
(Drinking Fountain)
Heavy Pattern

1

40

58.85



SCV-054

SCV-054

1/2" Self Closing Bubbler Faucet
(Drinking Fountain)

1

40

42.90



SCV-050

SCV-050

1/2" Self Closing Valve
Cross Handle

1

50

40.70



SCV-052

SCV-052

1/2" Self Closing Valve
Lever Handle

1

50

40.70



SCV-053

SCV-053

1/2" Self Closing Valve
Lever Handle and Chain

1

50

41.80



WSI

MATCO-NORCA MODEL #	SIZE & DESCRIPTION	INNER CARTON QUANTITY	MASTER CARTON QUANTITY	LIST PRICE
WS WASHING MACHINE VALVES BRONZE W/LEVER				
WSI-050	Dual 1/2" IPS Inlet x Dual Hose Outlet Washing Machine Valve	1	40	34.46
WSC-051	Dual 1/2" SWT & IPS Inlet x Dual Hose Outlet Washing Machine Valve	1	40	42.08



205WCMP



205WM3

WS	WASHING MACHINE VALVES	NICKEL PLATED W/TEE HANDLE		
205WCMP	1/2" Comp Inlet x Hose Outlet Washing Machine Valve	1	72	5.24
205WF3	1/2" FIP Inlet x Hose Outlet Washing Machine Valve	12	72	4.62
205WM3	1/2" MIP Inlet x Hose Outlet Washing Machine Valve	12	72	4.43



WTI



WTS

WTI/WTS	CAST BRASS WASHING MACHINE TEES			
1-1/2" FIP X 1-1/2" MIP				
WTI-75	3/4" MIP x 1/2" FIP	10	100	5.74
WTI-77	3/4" Hose x 1/2" FIP	10	100	5.74
WTI-78	3/4" Hose x 1/2" SWT	10	100	5.74
1-1/2" MIP x 1-1/2" Solder Joint				
WTS-80	3/4" MIP x 1/2" FIP - "Robinson Tee"	10	100	5.29
WTS-82	3/4" Hose x 1/2" FIP	10	100	5.29
WTS-83	3/4" Hose x 1/2" SWT	10	100	5.29



TMX-075

TMX	TWIN MIX CONNECTOR			
TMX-075	3/4" Galvanized Twin Mix Washing Machine Connector	1	500	7.21

MATCO-NORCA
MODEL #

SIZE &
DESCRIPTION

INNER
CARTON
QUANTITY

MASTER
CARTON
QUANTITY

LIST
PRICE



DTP-100



DTP-200



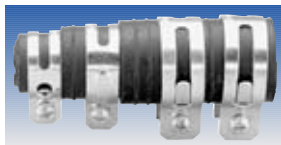
DTP-300

DTP DISHWASHER TAIL PIECES

MATCO-NORCA MODEL #	SIZE & DESCRIPTION	INNER CARTON QUANTITY	MASTER CARTON QUANTITY	LIST PRICE
DTP-100	1/2" Nominal Copper Outlet	1	50	10.22
DTP-200	3/4" Nominal Copper Outlet	1	50	10.68
DTP-300	3/4" Hose Thread Outlet	1	50	12.13



AG-007



DDC-100

DTP DISHWASHER TAIL ACCESSORIES

MATCO-NORCA MODEL #	SIZE & DESCRIPTION	INNER CARTON QUANTITY	MASTER CARTON QUANTITY	LIST PRICE
AG-007	Dishwasher Air Gap - IAPMO	1	50	4.05
DDC-100	4 Clamp Dishwasher Disposal Connector	50	200	1.79



BSV-100

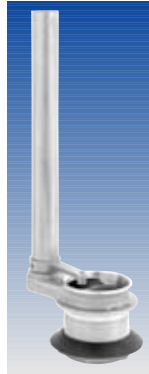
BSV BRASS SADDLE VALVE

Fits 3/8" - 1-1/4" Tubing - 1/4" Outlet

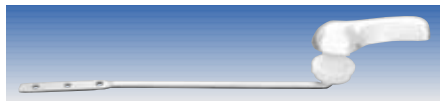
MATCO-NORCA MODEL #	SIZE & DESCRIPTION	INNER CARTON QUANTITY	MASTER CARTON QUANTITY	LIST PRICE
BSV-100	Standard	1	24	2.02
BSV-200	Self Piercing	1	24	2.02



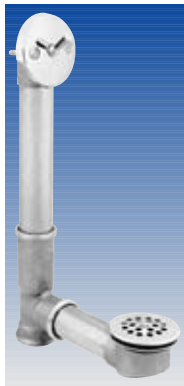
T-100



T-250



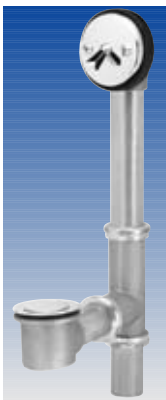
T-300M



TWB-100



TWB-200



TWB-605

MATCO-NORCA MODEL #	SIZE & DESCRIPTION	INNER CARTON QUANTITY	MASTER CARTON QUANTITY	LIST PRICE
T TOILET TANK TRIM				
T-100	Brass Elevated Ballcock with Refill Tube, Clip & Float Rod	1	50	17.48
T-250	Brass Douglas Flush Valve w/Guide Arm	2	50	15.02
T-300M	Chrome Plated Handle Single Action Tank Lever	50	200	1.61
T-300MB	Chrome Plated Handle Single Action Tank Lever, Individual Box	1	100	1.85

TWB BATH WASTE & OVERFLOW - BRASS				
TWB-100	1-1/2" Trip Lever w/Grid Drain	1	12	57.48
TWB-200	1-1/2" Lift & Turn	1	10	61.48
TWB-300	1-1/2" Touch Toe	1	10	61.48
TWB-605	1-1/2" Pop-Up Drain	1	12	62.70



TWB-150

TWB-250

TWB-350

MATCO-NORCA
MODEL #

SIZE &
DESCRIPTION

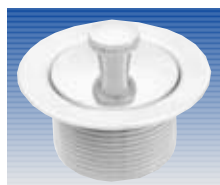
INNER
CARTON
QUANTITY

MASTER
CARTON
QUANTITY

LIST
PRICE

TWB BATH WASTE & OVERFLOW - POLYPROPYLENE

TWB-150	Trip Lever	1	12	17.64
TWB-250	Lift Lock	1	12	22.07
TWB-350	Easy Touch	1	12	22.07



LNT-152



TTD-150



SDBC-200

LNT PARTS FOR BATH DRAINS

LNT-151	1-1/2" CP Lift & Turn, Die Cast	1	48	5.46
LNT-152	1-1/2" CP Lift & Turn, Brass	1	100	9.02
TTD-150	1-1/2" CP Touch Toe Drain, Brass	1	100	8.82
SDBC-200	2" No Caulk Shower Drain w/SS Grid	1	40	11.90



41375

413 STANDING WASTE - BRASS

41375	1-1/2" Male	1	10	58.88
41380	1-1/2" Female	1	10	60.85
41390	1-1/2" Male/Female Combination	1	10	60.85



MATCO-NORCA MODEL #	SIZE & DESCRIPTION	INNER CARTON QUANTITY	MASTER CARTON QUANTITY	LIST PRICE
SBW PARTS FOR STANDING BATH WASTE				
SBW-07	1-1/2" Shoe	2	24	27.68
SBW-08	Plunger Assembly	2	50	16.48
SBW-09	Chrome Plate Barrel Only	2	50	17.59

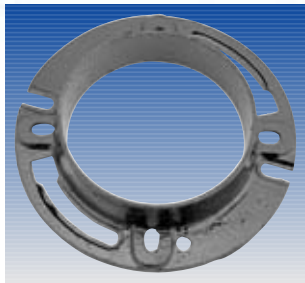


SP	CAST BRASS URINAL SPUDS			
SP-175	1" x 3/4"	20	200	2.77
SP-125	1-1/4" x 1-1/4"	15	150	4.62
SP-1275	1-1/4" x 3/4"	25	150	4.62



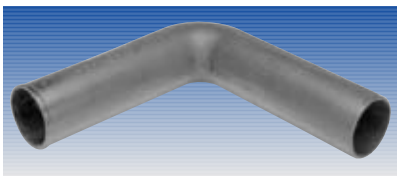
SP	CAST BRASS CLOSET SPUDS			
SP-152	1-1/2" x 1-1/4"	25	125	4.11
SP-155	1-1/2" x 1-1/2"	25	125	4.49
SP-225	2" x 1-1/4"	10	100	5.64
SP-250	2" x 1-1/2"	10	100	5.41
SP-200	2" x 2"	10	100	5.27

	MATCO-NORCA MODEL #	SIZE & DESCRIPTION	INNER CARTON QUANTITY	MASTER CARTON QUANTITY	LIST PRICE
 CF-100  CF-200  CF-250  CF-300  CF-400  CF-500	CF	CAST BRASS CLOSET FLANGES			
	CF-100	4" Brass Closet Flanges	1	50	6.16
	CF-200	4" x 3" DWV Closet Flanges For Sweat	1	50	11.39
	CF-250	3" Brass DWV Closet Flange-Shallow	1	50	9.48
	CF-300	4" Deep Seal Closet Flange	1	50	6.77
	CF-400	4" x 3" Closet Flange for Lead	1	50	8.25
	CF-500	4" Offset Closet Flange	10	60	11.69
 CFCI	CFCI	CAST IRON NO CAULK CLOSET FLANGE			
		<i>With Stainless Steel Nuts & Bolts</i>			
	CFCI-320	3" x 2"	1	200	7.62
	CFCI-420	4" x 2"	1	200	8.97
	CFCI-430	4" x 3"	1	200	15.53
CFCI-440	4" x 4"	1	200	14.58	



CFCI

MATCO-NORCA MODEL #	SIZE & DESCRIPTION	INNER CARTON QUANTITY	MASTER CARTON QUANTITY	LIST PRICE
FCI CAST IRON CLOSET FLANGE - CAULK CONNECTION				
FCI-420	4" x 2"	1	8	5.52
FCI-420H	4" x 2-1/2" Extra Heavy	1	8	5.60



CICB

CICB NO-HUB CAST IRON CLOSET BENDS				
CICB1116	4 x 16	1	50	45.05
CICB11615	4 x 6 x 15	1	25	27.72



TRAP-8902

TRAP SEMI CAST TRAP - 17 GAUGE				
<i>Cast Brass J Bend & Solid Brass Coupling Nuts</i>				
TRAP-8902	1-1/2" x 1-1/4"	1	24	26.55
TRAP-8912	1-1/2" x 1-1/2"	1	24	26.51
TRAP-8872	1-1/4" x 1-1/4"	1	24	24.92



TRAP A

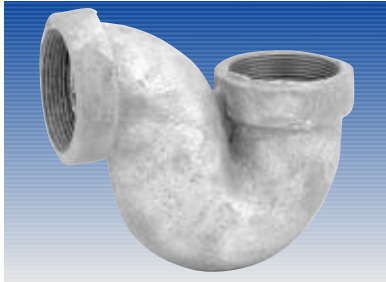
TRAP CAST BRASS TRAPS				
TRAP-A	1-1/2" x 1-1/4" Chrome Plate LA Trap - IPS With Cleanout	1	25	18.83
TRAP-B	1/2" x 1-1/4" Chrome Plate LA Trap - IPS Less Cleanout	1	25	18.39



TRAP D

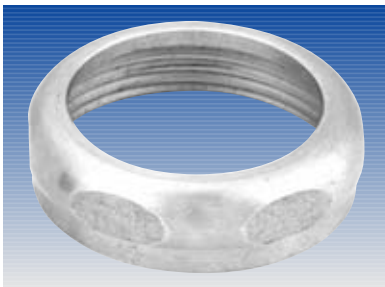
TRAP-C	1-1/2" x 1-1/2" Rough Brass LA Trap - Sweat Less Cleanout	1	25	13.57
TRAP-D	1-1/2" x 1-1/4" Rough Brass LA Trap - IPS With Cleanout	1	25	12.98

	MATCO-NORCA MODEL #	SIZE & DESCRIPTION	INNER CARTON QUANTITY	MASTER CARTON QUANTITY	LIST PRICE
TRAP CAST BRASS TRAPS					
		TRAP-E 1-1/2" x 1-1/2" Rough Brass LA Trap - IPS Less Cleanout	1	25	13.02
		TRAP-F 1-1/2" x 1-1/4" Rough Brass LA Trap - IPS With Cleanout	1	25	12.98
		TRAP-G 1-1/2" x 1-1/4" Chrome Plate NY Trap - IPS With Cleanout	1	25	18.04
		TRAP-H 2" x 1-1/2" Rough Brass NY Trap - IPS With Cleanout	1	20	14.92
		TRAP-I 2" x 1-1/2" Rough Brass NY Trap - Sweat With Cleanout	1	25	14.92
		TRAP-J 2" x 1-1/2" Rough Brass Swing Tee Trap - IPS With Cleanout IPS	1	15	22.99
		TRAP-L 1-1/2" x 1-1/2" Rough Brass Low Seal Bath Trap - IPS Less Cleanout	1	25	10.45
		TRAP-M 2" x 1-1/2" Chrome Plate NY Trap - IPS With Cleanout	1	25	18.52
		TRAP-N 2" x 1-1/2" Rough Brass LA Trap - IPS With Cleanout	1	20	25.86
		TRAP-Q 2" x 1-1/2" Rough Brass LA Trap - Sweat With Cleanout	1	15	28.35



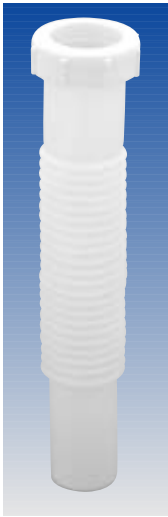
LST-201

MATCO-NORCA MODEL #	SIZE & DESCRIPTION	INNER CARTON QUANTITY	MASTER CARTON QUANTITY	LIST PRICE
LST CAST IRON GALVANIZED TRAPS				
LST-150	1-1/2" Low Seal Bath Trap Less Cleanout	1	18	10.92
LST-201	2" Low Seal Bath Trap Less Cleanout	1	28	14.97



NT-155R

NT CAST BRASS SLIP NUTS				
Rough Brass				
NT-125R	1-1/4" x 1-1/4"	250	500	1.05
NT-152R	1-1/2" x 1-1/4"	250	500	1.14
NT-155R	1-1/2" x 1-1/2"	250	500	1.06
Chrome Plated				
NT-125C	1-1/4" x 1-1/4"	250	500	1.10
NT-152C	1-1/2" x 1-1/4"	250	500	1.31
NT-155C	1-1/2" x 1-1/2"	250	500	1.14



MNSN-150



MNCE-555

MN PVC FLEXIBLE SINK DRAINS				
MNSN-125	1-1/4" x 9" Slip Joint	1	100	3.99
MNSN-150	1-1/2" x 12" Slip Joint	1	100	3.99
MNFT-150	1-1/2" x 12" Flare Tail Piece	1	100	3.99
MNCE-555	Connector - Coupler	1	100	3.33
MNDT-111	1-1/4" x 8" Pop Up Drain	1	100	4.37
MNJV-250	1-1/2" x 1-1/4" J Bend	1	100	6.16
MNJV-255	1-1/2" x 1-1/4" J Bend w/Adapter	1	100	7.09



MNJV-255

COMMITTED TO QUALITY

MATCO-NORCA continues our commitment in maintaining a high standard of quality for all the products we offer. Various products in this catalog are labeled with a designated approval or certification code. Below is a brief description of these approvals:



ISO International Standard Organization - A worldwide standards coordinating organization. An internationally recognized certification for manufacturers that comply with high standards of quality control. Developed standards ISO-9000 through ISO-9004.



IAPMO International Association of Plumbing & Mechanical Officials - Qualifies and lists products suitable for use in plumbing installations.

NSF National Sanitation Foundation - A non-profit organization best known for its role in developing standards for equipment, products and services. Many standards govern products for residential use.



ASSE American Society of Sanitary Engineering - Develops standards and qualifies products for plumbing and sanitary installations.

CSA Canadian Standards Association - Develops standards, tests and qualifies products used in gas lines and gas appliance installations.



UL Underwriter's Laboratory - Tests and qualifies valve and fitting products under UL standards for safety.

FM Factory Mutual - Develops standards and qualifies products for use by the general public.



AWWA American Water Works Association - Promotes public health through improvement of the quality of water. Develops standards for valves, fittings and other equipment.

ADA American Disability Act - Assures that products fully comply with the provisions of the act to ensure equal access for physically challenged users.



ASME American Society of Mechanical Engineers - Develops standards for materials and testing as well as finished products.

ASTM American Society for Testing of Materials - Develops standards for materials, products, systems and services.



ANSI American National Standards Institute - Organization that coordinates the work among U.S. Standards writing groups. Works in conjunction with other groups such as ISO, ASME, ASTM, etc.



MSS Mechanical Standardization Society of the Valve and Fittings Industry, Inc. - A committee of manufacturers that develops technical codes and standards for the Valve & Fitting industry.

Matco-Norca Offers Comprehensive Lines of

Malleable Pipe Fittings - Two Separate Lines:

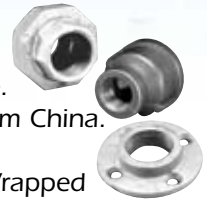
Thailand Fittings - 150 lb. ISO-9002

- ❖ Considered the best foreign fittings.
- ❖ Stocked from 1/8" - 6" diameters.
- ❖ 100% Pressure Tested.



China Fittings - ISO-9002

- ❖ A more economical line.
- ❖ Considered the best from China.
- ❖ 100% Pressure Tested.
- ❖ Available Individually Wrapped & UPC Bar Coded.



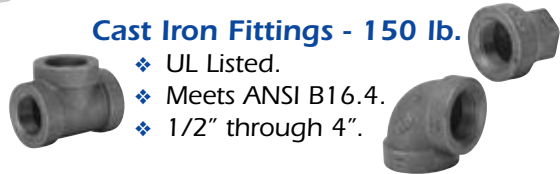
Thailand Fittings - 300 lb. ISO-9002

- ❖ For Water, Oil, Steam and Gases.
- ❖ Meets or Exceeds All Applicable ASTM & ASME Standards.
- ❖ 1/4" through 4".



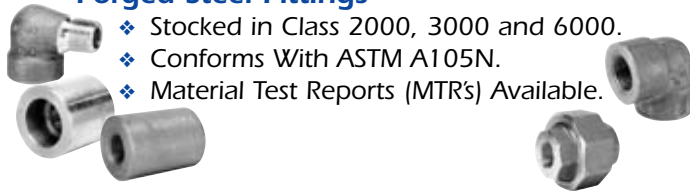
Cast Iron Fittings - 150 lb.

- ❖ UL Listed.
- ❖ Meets ANSI B16.4.
- ❖ 1/2" through 4".



Forged Steel Fittings

- ❖ Stocked in Class 2000, 3000 and 6000.
- ❖ Conforms With ASTM A105N.
- ❖ Material Test Reports (MTRs) Available.



Brass Pipe Fittings - ISO-9002

- ❖ Heavy Pattern B62 Bronze Thailand Fittings.
- ❖ Stocked from 1/8" - 4" diameter.
- ❖ Meets all ANSI standards.
- ❖ Economical Chinese Line Available



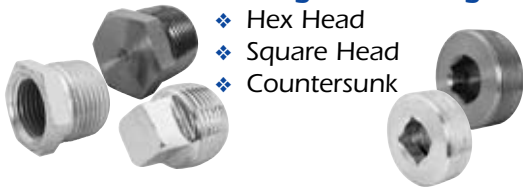
Steel Couplings

- ❖ Merchant & Merchant Half
- ❖ Left & Right, API



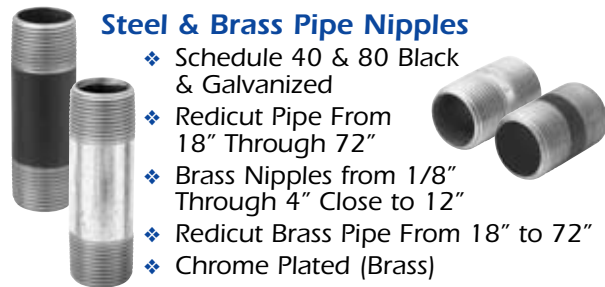
Steel Plugs & Bushings

- ❖ Hex Head
- ❖ Square Head
- ❖ Countersunk



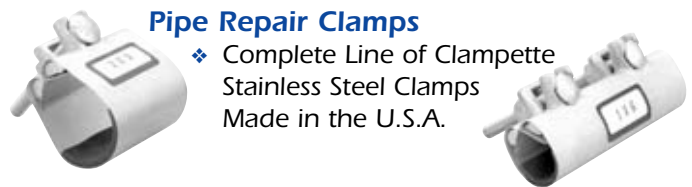
Steel & Brass Pipe Nipples

- ❖ Schedule 40 & 80 Black & Galvanized
- ❖ Redicut Pipe From 18" Through 72"
- ❖ Brass Nipples from 1/8" Through 4" Close to 12"
- ❖ Redicut Brass Pipe From 18" to 72"
- ❖ Chrome Plated (Brass)



Pipe Repair Clamps

- ❖ Complete Line of Clampette Stainless Steel Clamps
- ❖ Made in the U.S.A.



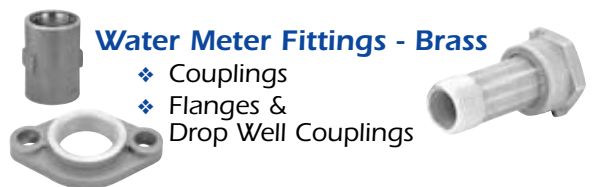
Insert Adapters, Couplings, & Tees

- ❖ Insert Male Adapters- Bronze & Galvanized
- ❖ Insert Coupling- Bronze & Galvanized
- ❖ Insert Elbows & Tees- Bronze



Water Meter Fittings - Brass

- ❖ Couplings
- ❖ Flanges & Drop Well Couplings



No Hub Couplings

- ❖ UPC Approved
- ❖ Standard
- ❖ Heavy Pattern

Cast Iron No Hub Fittings

- ❖ UPC

Cast Iron No Hub Pipe

- ❖ UPC, ASTM-A888

Companion Flanges - Cast Iron

- ❖ Threaded
- ❖ Reducing
- ❖ Blind



PVC Van Stone Flanges

Valves, Fittings and Plumbing Products

Brass & Bronze Valves



Ball, Gate, Globe & Check Valves

- ❖ Extensive Line

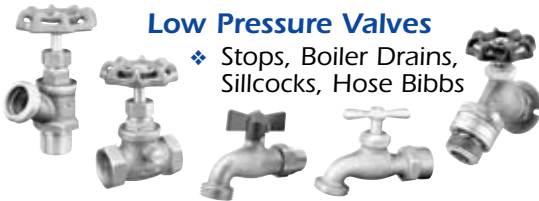
Supply Valves

- ❖ Brass, Chrome Plated, 1/4 Turn, Pex



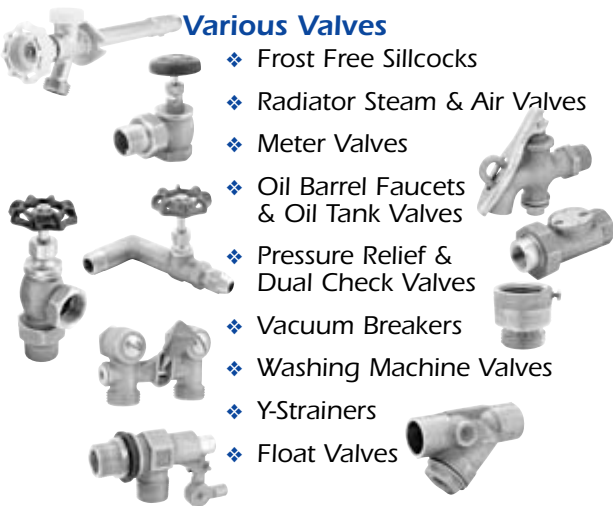
Low Pressure Valves

- ❖ Stops, Boiler Drains, Sillcocks, Hose Bibbs



Various Valves

- ❖ Frost Free Sillcocks
- ❖ Radiator Steam & Air Valves
- ❖ Meter Valves
- ❖ Oil Barrel Faucets & Oil Tank Valves
- ❖ Pressure Relief & Dual Check Valves
- ❖ Vacuum Breakers
- ❖ Washing Machine Valves
- ❖ Y-Strainers
- ❖ Float Valves



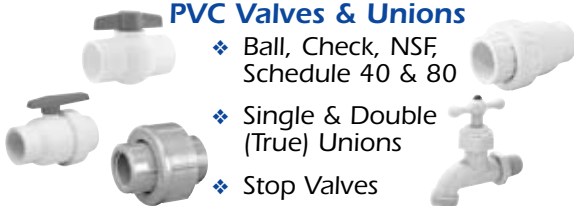
Gas Valves

- ❖ CSA, UL, FM, NSF, One and Two Piece



PVC Valves & Unions

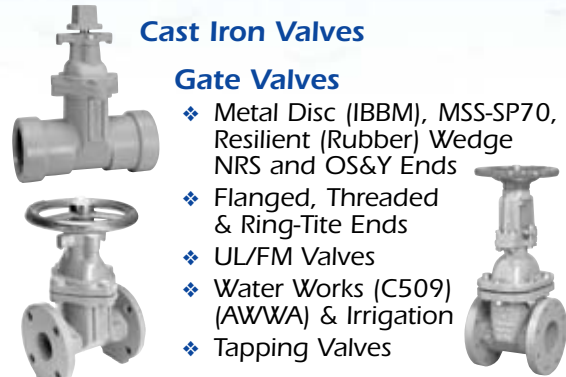
- ❖ Ball, Check, NSF, Schedule 40 & 80
- ❖ Single & Double (True) Unions
- ❖ Stop Valves
- ❖ Celcon & CPVC Valves Stop, Stop & Waste, Hose Bibbs



Cast Iron Valves

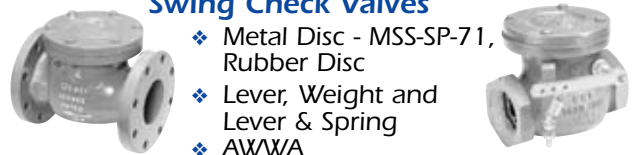
Gate Valves

- ❖ Metal Disc (IBBM), MSS-SP70, Resilient (Rubber) Wedge NRS and OS&Y Ends
- ❖ Flanged, Threaded & Ring-Tite Ends
- ❖ UL/FM Valves
- ❖ Water Works (C509) (AWWA) & Irrigation
- ❖ Tapping Valves



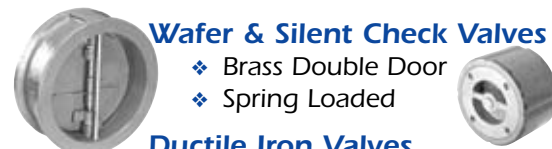
Swing Check Valves

- ❖ Metal Disc - MSS-SP-71, Rubber Disc
- ❖ Lever, Weight and Lever & Spring
- ❖ AWWA



Wafer & Silent Check Valves

- ❖ Brass Double Door
- ❖ Spring Loaded



Ductile Iron Valves

- ❖ Resilient (Rubber) Wedge Gate Valves (C515)
- ❖ NRS - Flanged, Mechanical Joint & Ring-Tite Ends
- ❖ Waterworks, Irrigation & Reclaimed Water Valves
- ❖ C900 Valves



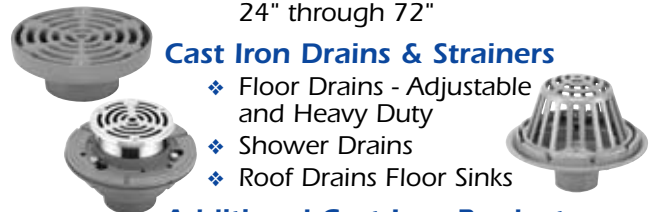
Butterfly Valves

- ❖ Lever and Gear Operated
- ❖ Wafer & Lug Style
- ❖ Available Discs: Stainless Steel, Aluminum-Bronze, Ductile Iron
- ❖ Available Seats: BUNA, EPDM, Viton
- ❖ Available Sizes: 2" through 30"
- ❖ Stem Extensions from 24" through 72"



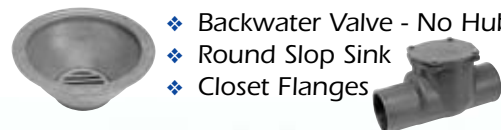
Cast Iron Drains & Strainers

- ❖ Floor Drains - Adjustable and Heavy Duty
- ❖ Shower Drains
- ❖ Roof Drains Floor Sinks



Additional Cast Iron Products

- ❖ Backwater Valve - No Hub
- ❖ Round Slop Sink
- ❖ Closet Flanges



TERMS & CONDITIONS OF SALE

ACCEPTANCE

Orders, whether verbal or written, are subject to acceptance by Matco-Norca, Inc. Hereinafter referred to as the seller at its Brewster, N.Y. office. No terms or conditions of buyers order contrary to seller's terms and conditions shall be binding upon seller unless specifically agreed upon by seller in writing. Seller's acceptance of orders shall occur by written acknowledgement or tender of delivery of goods and or services the subject hereof (goods), which ever occurs first.

PRICES AND SALES POLICY

Until written confirmation of this contract has been received by buyer, all prices are subject to change without prior notice. We reserve the right to adjust orders to standard package quantities unless otherwise stated on buyers purchase order. We reserve the right to make product improvement without notice. If seller determines buyer's credit is unsatisfactory or there is reasonable doubt concerning buyer's ability to pay, payment in advance may be required or buyer shall provide security for such payment in an amount and form acceptable to seller. Unless otherwise specified by seller, terms are 2% 10 days/net 30 days.

Cash discounts apply to the value of goods at the net invoiced value before transportation charges, taxes and additional duties. Unearned cash discounts will be charged back as an unpaid balance to the buyers account. Any past due amount is subject to a finance charge of 1-1/2% per month (18% per year) on the total past due balance in accordance with the Truth-in-lending Act in Title 1 of the Federal Consumer Protection Act effective July 1, 1969.

TAXES

All prices are exclusive of taxes and excises. Sales, use and other taxes, by whomsoever levied, are to be paid by the buyer and unless invoiced, are to be paid by buyer direct to the appropriate governmental agency. Buyers are required to furnish seller with a copy of their tax exemption or resale certificate, otherwise applicable state sales taxes will be charged.

DELIVERY AND SHIPMENT OF MATERIALS

All goods are sold F.O.B. sellers warehouse. Delivery of material to a common carrier shall constitute delivery thereof to buyer and risk of loss shall pass to buyer at such time. Claims for damage to or loss of material in transit shall be filed by buyer direct with carrier. Buyer assumes all risks and liability for the results obtained by the use of material delivered hereunder. No claim of any kind, whether as to material delivered or for nondelivery or late delivery of material and whether based on negligence or otherwise, shall be greater in amount than the purchase price of the material in respect to which such claim is made. In no event shall seller be liable for indirect or consequential damages or for anticipated profits or loss of use of equipment.

RETURNS AND CANCELLATIONS

Permission in writing and return authorization must be obtained from seller before any goods are returned. All returns must be prepaid, no collect shipments will be accepted. All returns made for reasons other than defects are subject to a restocking charge. Discontinued goods are not returnable.

Cancellation of orders may be made only with the sellers written consent and shall be subject to cancellation charges.

GOVERNING LAW

The entering into, construction, interpretation, performance and discharge of the terms set forth herewith shall be governed in accordance with the laws of the State of New York.

LIMITED ONE YEAR WARRANTY

Seller warrants the material to be free of defects in material and workmanship, under normal use, proper maintenance and proper operation, for a period of one year from date of delivery to a common carrier for shipment to buyer or his designated agent. The obligation of the seller is limited to (1) repair of the material, or (2) replacement of any component or components proven defective in material or workmanship, or (3) refund of the purchase price. Seller shall have no liability for the cost of removal or reinstallation with respect to any replaced or repaired product. The election of said remedies shall be determined by seller in its sole discretion and shall be considered final disposition.

All implied warranties, including the implied warranties of merchantability and fitness for a particular purpose, are hereby disclaimed and excluded. This warranty is in lieu of all other warranties, guarantees, agreements and similar obligations or seller, in no event shall seller be liable for consequential or incidental damages.

CLAIMS

No later than ten (10) days from receipt of material buyer will report, in writing, all claims for any damage, defects or shortages. All claims, including for alleged damaged or defective material, shortage negligence or any other cause whatsoever "(defective performance)", shall be deemed waived unless made in writing within the ten (10) day period. However, any defective performance not discoverable within said ten (10) day period (including that discoverable only in processing or in further manufacturing) shall be deemed waived unless made in writing and received by seller in writing within ninety (90) days after receipt or within ten (10) days after buyer learns of the alleged defect, whichever occurs first. Seller's liability shall in no event exceed the purchase price of the material in respect to which the claim is made, or at the election of seller at its sole discretion, and to repair or replacement of such material. Seller shall not be liable for, and buyer assumes all responsibility for, all personal injury and property damage resulting from handling, possession, use or resale of the material by buyer. In no event shall seller be liable for incidental or consequential damages, whether buyer's claim is in contract, negligence, or otherwise. If claim is made, buyer shall permit seller at seller's option to reinspect the material at buyer's plant or if seller so directs, buyer shall return the material at buyer's expense to seller's facility for reinspection. No material may be returned to seller without prior written permission from seller.

FORCE MAJEURE

Anything in this agreement to the contrary notwithstanding, it is expressly agreed that seller shall not be liable for any damages resulting from, and buyer shall not have the right to cancel this order because of any delays caused in whole or in part by fires, floods, windstorms, tornadoes, wars, riots, insurrections, strikes, lockouts sit-downs, slow-downs, or other labor trouble, causing cessation or interruption of operation or by accident, material shortages, labor or fuel shortages, or inability to procure labor or materials, either on the part of the seller, or because any plant, plants or any portion thereof belonging to seller have been commandeered by the legally constituted public authority, or because of any priorities or preferences established for the manufacture, assembly or allotment of materials by order, decree, or to otherwise of the United States, or by any department, bureau, commission, committee, agent or administrator of any legally constituted public authority in any plant of seller, or any of its suppliers, or resulting from any other cause beyond the control of seller.

QUICK FIND INDEX

ITEM NAME	PAGE NUMBER
25-29	
25	43-45
26	45-47
29	47-51
200	
205	66
400	
413	69
437	51
438	52
A	
AC	19-20
AE	6-11, 15-25
AG	67
AIR	54
AS	39
B	
B848	39
BCL	63
BKT	39
BSV	67
C	
CF	71
CFCI	71
CH	54
CICB	72
CP	40
CT	25-28
D	
DDC	67
DDF	55
DE	62
DTP	67
DV	40
F	
FB	41
FCI	72

ITEM NAME	PAGE NUMBER
F (CONTINUED)	
FT	11-14, 33-34
FY	14, 34, 41-43, 60-61, 63-64
G	
GH	52
GS	53
H	
HS	14
I	
IS	54
J	
JCR	41
L	
LNT	69
LSD	14
LST	74
M	
M	39
MNCE	74
MNDT	74
MNFT	74
MNJN	74
MNSN	74
N	
NM	35
NT	74
P	
PP	52
R	
RH	51
RQ	33
RT	27
S - SC	
S	36-38, 41
SBW	70
SCB	65
SCV	65

ITEM NAME	PAGE NUMBER
SD - SW	
SDB	61, 69
SDP	62
SP	70
SS	57-60
SSDW	56
SSF	55
SST	56
SSV	54
SSWM	56
STMC	53
STMG	52-53
STMP	53
STMY	53
SW	54
T	
T	68
TMX	66
TNS	29-32
TRAP	72-73
TTD	69
TWB	68-69
U	
UTF	54
V	
VC	40
VHW	40
W	
W	40
WM	62
WSC	66
WSI	66
WTI	66
WTS	66

