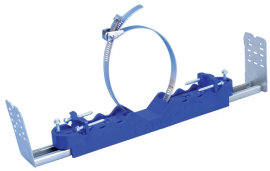




TELESCOPING PLUMBING PREFAB BRACKET, 15 3/4"–25" STUD SPACING, 1 1/8"–4 1/2" OD1, 0.375"–1.05" OD2

CATALOG NUMBER

PFB1624



FEATURES

Out-of-the-box in-wall solution for supporting supply and waste lines

Includes an adjustable telescoping screw gun bracket that provides a mid-span support and accommodates non-standard stud spacing

Multiple pilot holes in telescoping bracket

Can be mounted to face or inside of stud

Modular design can accommodate multiple pipe sizes of supply and waste lines

Marked for easy identification of supply line offset

Can mount pipe in all vertical or horizontal orientations

Plastic bracket housing is non-corrosive and compatible with all varieties of pipe

Additional Plumbing Prefab Bracket Clamps (PFBC) can be purchased separately for multiple supply line runs

PRODUCT ATTRIBUTES

Material: Steel;Acrylonitrile Butadiene Styrene;Stainless Steel 410 (EN 1.4006)

Finish: Pregalvanized;Electrogalvanized

Static Load Safety Factor: 3:1

Stud Spacing: 15 3/4" – 25"

Supply Line Offset: 4";6";8"

Outer Diameter 1: 1 1/8" – 4 1/2"

Outer Diameter 2: 0.375" – 1.050"

Height: 1.300"

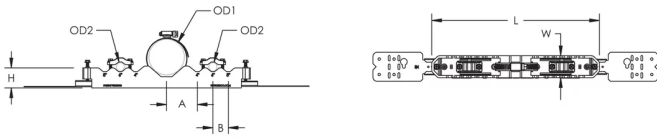
Length: 10.860"

Width: 1.420"

A: 2"

B: 1"

DIAGRAMS



WARNING

nVent products shall be installed and used only as indicated in nVent's product instruction sheets and training materials. Instruction sheets are available at www.nvent.com and from your nVent customer service representative. Improper installation, misuse, misapplication or other failure to completely follow nVent's instructions and warnings may cause product malfunction, property damage, serious bodily injury and death and/or void your warranty.

North America

+1.800.753.9221

Option 1 – Customer Care

Option 2 – Technical Support

Europe

Netherlands:

+31 800-0200135

France:

+33 800 901 793

Europe

Germany:

800 1890272

Other Countries:

+31 13 5835404

APAC

Shanghai:

+ 86 21 2412 1618/19

Sydney:

+61 2 9751 8500



Our powerful portfolio of brands:
nVent.com CADDY ERICO HOFFMAN RAYCHEM SCHROFF
TRACER