



Hospitals & Wellness  
Clinics



Schools, Colleges,  
& Universities



Government  
Facilities



Hotels  
& Restaurants



Non-Profit  
Organizations



Shopping Malls  
& Centers



Apartment  
Buildings



Entertainment  
& Sports Venues

## COMMERCIAL

# PRODUCT CATALOG



BOILERS, WATER HEATERS & POOL HEATERS

HIGH EFFICIENCY



XVers® + KÖR™

1 MMBTUH – 4 MMBTUH  
**H** 94.5-95.7% Efficiency  
Stainless steel fire-tube.  
Cascades up to 8 units.  
High Elevation Models.  
HO<sub>2</sub>T™ Track (Optional).  
HO<sub>2</sub>T™ Track and Trim (Optional).



XVers L™

399 MBTUH - 850 MBTUH  
**H** 97.2-98% Efficiency  
Stainless steel fire-tube.  
Cascades up to 8 units.



XPak FT®

199 MBTUH - 399 MBTUH  
**H** 94.8-96% Efficiency  
Stainless steel fire-tube.  
Wall mounted.  
Cascades up to 8 units.



Commercial Air to Water Heat Pump

60 MBTUH - 135 MBTUH  
**WH** COP UP TO 6.13  
Horizontal or Vertical configurations.  
Stacking options available.  
Optional BMS Connectivity via Modbus or BACnet.



XTherm®

1 MMBTUH - 4 MMBTUH  
**H** 96% Efficiency  
**WH** 97% Efficiency  
**P** 97% Efficiency  
Hybrid: copper or cupronickel finned water-tube with secondary stainless steel condensing water-tube.  
Cascades up to 8 units.



XFIIRE™

300 MBTUH - 1 MMBTUH  
**H** 96-96.5% Efficiency  
**WH** 96-96.5% Efficiency  
Stainless steel water-tube.  
Cascades up to 8 units.  
SureRack™ vertical racking option.



Triton®

130 MBTUH - 400 MBTUH  
**WH** 95-98% Efficiency  
80 gallon, 100 gallon. ASME and Non-ASME.  
SU - Base models; SS - Premium models.  
LeakSense™, LeakGuard™ (SS models only),  
Built in BACnet port (SS models only), and  
Advanced Power Anode Protection.



Commercial Electric Heavy Duty Water Heater

15kW - 60kW (51 - 204 MBTUH)  
**WH** 98% Thermal Efficiency  
85, 120 and 175 Gallons  
ASME models available  
208 or 480 VAC, 3-phase

**H** Hydronic **WH** Water Heating **P** Pool/Spa  
Raymote Equipped EcoNet Equipped  
Gas Electric Heat Pump

BOILERS, WATER HEATERS & POOL HEATERS

MID EFFICIENCY



MVB®

500 MBTUH - 4 MMBTUH  
**H** 84-86.2% Efficiency<sup>1</sup>  
**WH** 85-87% Efficiency<sup>2</sup>  
**P** 83-83.3% Efficiency<sup>3</sup>  
Cascades up to 8 units.

<sup>1</sup>Cat. I vent 84%. Cat. IV vent 85%-86.2%.  
<sup>2</sup>Cat. I vent 83-83.3%. Cat. IV vent 85%-87%.  
<sup>3</sup>Pool sizes vary by model.



Delta Limited®

400 MBTUH - 2.3 MMBTUH  
**H** 84% Efficiency  
**WH** 83.1-85% Efficiency



Hi Delta®

300 MBTUH - 2.3 MMBTUH  
**H** 84% Efficiency  
**WH** 83.1-85% Efficiency  
**P** 83.1% Efficiency<sup>3</sup>  
FlexGas® option for dual fuel (H, WH only, excludes model 2002).  
Cascades up to 8 units.  
SureRack™ vertical racking option.



Hi Delta® SS

150 MBTUH - 399 MBTUH  
**H** 84-85% Efficiency  
**WH** 85% Efficiency

ATMOSPHERIC



Raytherm®

511 MBTUH - 4 MMBTUH  
**WH** 82% Efficiency

TANKS



Stainless Steel Indirect Heater

30 - 115 Gallons  
444 stainless steel construction  
444 stainless steel coil heat exchanger



Stainless Steel Storage Tank

110 Gallons  
444 stainless steel construction  
Indoor or outdoor installation



DHW Tanks – Stock and Custom

80 - 1794 Gallons  
ASME and Non-ASME  
Vertical and horizontal



ASME Hydronic Buffer Tanks

40 - 139 Gallons  
Vertical and horizontal

## POOL & SPA HEATERS

### PROFESSIONAL SERIES



#### Professional 🔥

266 MBTUH - 399 MBTUH  
**P** 82% Efficiency  
 Featuring ProTek Shield™, Gas



#### Professional Heat Pump ⚡

140 MBTUH - 170 MBTUH  
**P** 6.1 ~ 5.8 C.O.P. (80,80,80)<sup>4</sup>  
 133 MBTUH - 155 MBTUH  
**P** 5.8 ~ 5.3 C.O.P. (80,63,80)<sup>4</sup>



#### Professional X94 🔥

399 MBTUH  
**P** 94% Efficiency, Gas



#### Professional Indirect 🔥📶

1 MMBTUH - 2 MMBTUH  
**P** 96% Efficiency  
 Cascades up to 8 units.

### ASME POOL & SPA



#### ASME Digital 🔥

199 MBTUH - 399 MBTUH  
**P** 82% Efficiency  
 Featuring ProTek Shield™, also available as Low NO<sub>x</sub> Gas

### ELECTRIC POOL & SPA



#### E3T™ ⚡

61 MBTUH - 184 MBTUH  
**P** 18 - 54kW  
 Low-Temp Operating  
 Load Detection  
 Quiet Operation

### ACCESSORIES



#### Indirect Heat Exchangers

45 MBTUH - 495 MBTUH  
 Stainless Steel or Titanium

<sup>4</sup>Tested to AHRI 1160. All Models comply with Florida 4.0 minimum C.O.P. requirements.

📶 Raymote Equipped

8 Cascade up to 8

🔥 HO<sub>2</sub>T

❄️ Cold Water Protection

🌐 EcoNet Equipped

VERSIC

🛡️ Dynamic Protection

📶 SureRack

**H** Hydronic **WH** Water Heating **P** Pool/Spa

📶 Raymote Equipped 🌐 EcoNet Equipped

🔥 Gas ⚡ Electric 🔄 Heat Pump

# Dynamic Protection™



Control the uncontrolled with an industry-first system designed to protect your investment.



#### Continuous Monitoring

- Advanced, patented controls system continuously monitors operating conditions with a built-in flow meter
- Adapts efficiently to changing system conditions



#### Optimized Performance

- Automatically adjusts the firing rate based on real-time flow rates and temperature to keep the unit at optimum performance
- Prevents unnecessary cycling and overheating to extend the life of the heat exchanger
- Ensures more uptime and a more reliable heat supply, even in less-than-ideal conditions



#### Maximized Efficiency

- Never worry about boiler room flow conditions again with the Dynamic Protection algorithm and flow meter
- Intelligent control system protects your investment for greater peace of mind



#### Available on the following products:

- XVers + KÖR
- XVers
- XVers L
- XFIIRE



Learn more about  
**Dynamic Protection**



# XVERS<sup>®</sup>

(POWERED BY KÖR<sup>™</sup>)

More heat in less space.

1 MMBTUH – 4 MMBTUH

**H** 94.5-95.7% Efficiency



Click icon or view standalone page to learn more.



## Maximum Performance

- 316L stainless steel KÖR heat exchanger for high-efficiency heating and maximum corrosion resistance (patent pending)
- Integrated flow meter for continuous monitoring and optimization with the Dynamic Protection controls algorithm
- Engineered for reliable indoor/outdoor performance and more uptime
- HO<sub>2</sub>T Track and Trim continuously monitors and controls the oxygen concentrations in boiler flue gas and automatically adjusts for fuel and airflow to maintain optimum combustion



### Installation Versatility

- 4 Thru The Door: the only 4 MMBTUH condensing boiler on the market that fits through the door with ease for convenient installation
- Forklift and pallet jack accessible base for easy transportation
- Multiple vent material options: PVC, CPVC, polypropylene, or stainless steel
- High elevation models available up to 10,000 ft.
- Conforms to Buy American Act



### Easy to Service

- Improved cabinet design with multiple smaller, lighter, easier-to-handle jacket panels for convenient access to key components
- Ultra-short height provides the best top access for servicing in compact boiler rooms
- Simple gas train design: a turnkey solution for easy commissioning and servicing



### Intelligent Controls

- VERSA IC controls with LCD touchscreen display
- Raymote access
- Control the uncontrolled with Dynamic Protection for more uptime and longer life

### Optional Features

- ☒ Variable or fixed speed pump
- ☒ Motorized isolation valve
- ☒ BACnet gateway
- ☒ Condensate treatment kit
- ☒ HO<sub>2</sub>T Track & HO<sub>2</sub>T Track and Trim
- ☒ CSD-1 package
- ☒ High elevation models
- ☒ Standard Stock Products

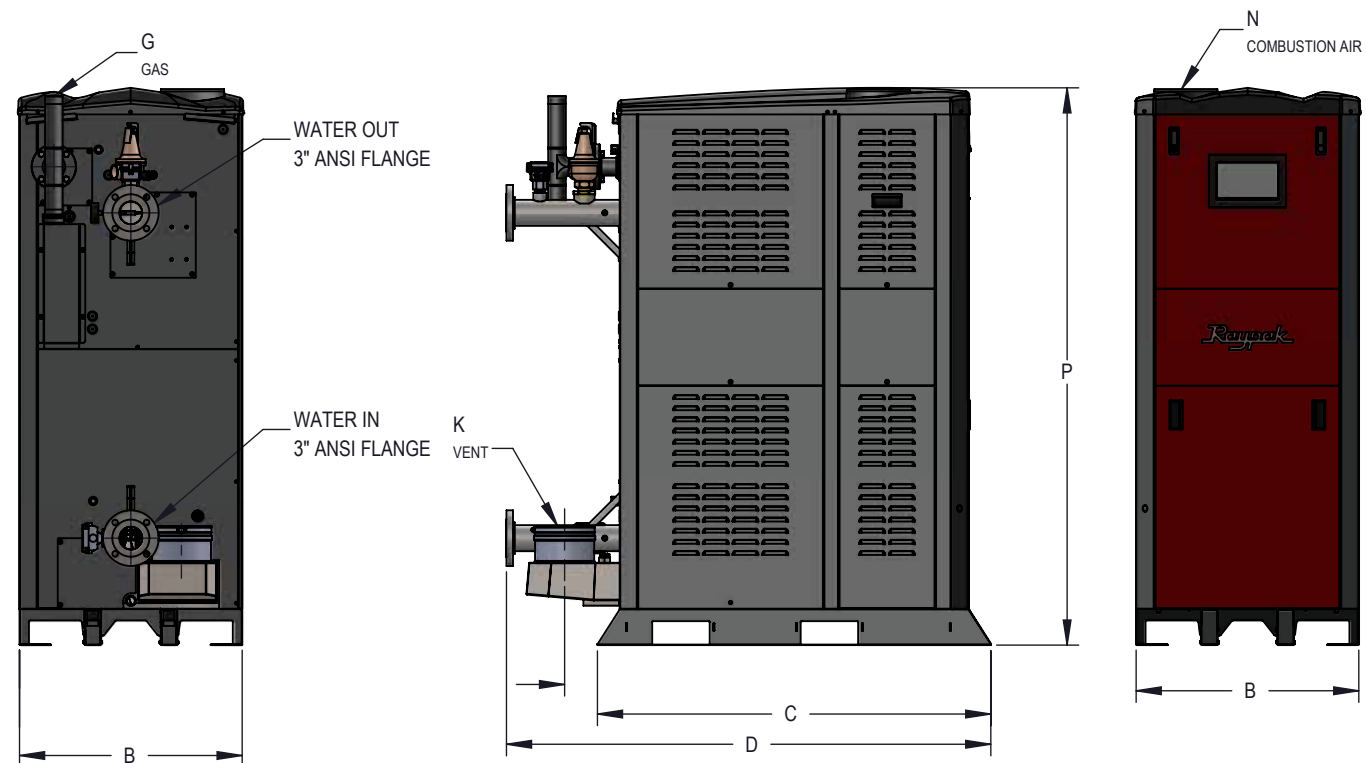


This product meets a stringent set of our company's internally defined sustainability standards.



## XVers + KÖR - Type H Models 1007 - 4007

Model	MBTU/h (kW)		Minimum BTU/h (kW) Input	Turn Down	AHRI Thermal / Combustion Efficiency (%)	Dimensions - Inches (mm)						
	Input	Output				B Width	C Base Depth	D Overall Depth	G NPT	K Flue Ø	N C/A Ø	P
1007	999 (293.1)	952 (279.0)	100,000 (29.3)	10:1	95.3 / 95.5	24 (610)	44 (1118)	56.3 (1430)	1-1/4 (31.75)	6 (152)	6 (152)	71.6 (1818)
1257	1,250 (366.3)	1,196 (350.5)	104,000 (30.5)	12:1	95.7 / 96.0	26 (660)	48 (1219)	60.3 (1531)		8 (203)	8 (203)	
1507	1,500 (439.6)	1,427 (418.2)	100,000 (29.3)	15:1	95.1 / 95.3	26 (660)	48 (1219)	60.3 (1531)		8 (203)	8 (203)	
2007	1,999 (586.0)	1,903 (557.8)	200,000 (58.6)	10:1	95.2 / 95.4	30 (762)	53 (1346)	65.3 (1659)		8 (203)	8 (203)	
2507	2,499 (732.3)	2,374 (695.7)	300,000 (88.0)	8:1	95.0 / 96.2	34 (864)	58 (1473)	70.3 (1786)	2.0 (51.0)	10 (254)	10 (254)	74.6 (1894)
3007	3,000 (879.2)	2,862 (838.7)	300,000 (88.0)	10:1	95.0 / 95.4	34 (864)	58 (1473)	70.3 (1786)		10 (254)	10 (254)	
3507	3,500 (1025.7)	3,329 (975.6)	400,000 (117.2)	9:1	95.0 / 95.1	34 (864)	58 (1473)	70.4 (1788)		12 (305)	12 (305)	
4007	4,000 (1172.3)	3,788 (1110.1)	400,000 (117.2)	10:1	94.5 / 94.7	34 (864)	58 (1473)	70.4 (1788)		12 (305)	12 (305)	



Applicable for hydronic heating in hospitals, schools, multi-family housing, and more.



Learn more about  
**XVers + KÖR boilers**  
at [Raypak.com](http://Raypak.com)



# XVERS™ L

Engineered to keep your environment controlled and comfortable.



399 MBTUH - 850 MBTUH

**H** 97.2-98% Efficiency



Click icon or view standalone page to learn more.

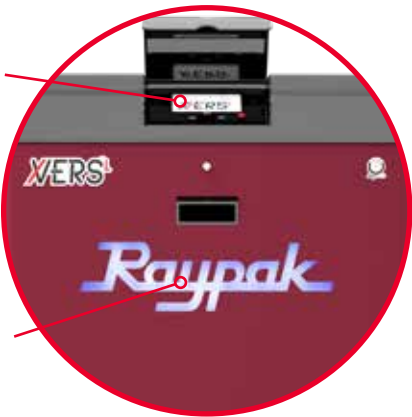


## Sleek Design

- Multi-function status light provides a quick visual indication of the boiler's status at a distance while doubling as a service light
- Forklift and pallet jack accessible base for convenient transportation and installation

Touchscreen display

Status light



## Maximum Performance

- Corrosion-resistant stainless steel fire tube heat exchanger for maximum efficiency and reliability
- Up to 10:1 turndown



## Installation Flexibility

- Can be installed as primary or primary/secondary piping
- Multiple vent material options: PVC, CPVC, polypropylene, or stainless steel
- Compact, streamlined design and zero side clearance requirements for easy configuration based on your needs



## Intelligent Controls

- VERSA IC controls with LCD touchscreen display and Raymote access
- Cascade up to 8 boilers in parallel or sequential modulation modes to optimize performance
- Built-in, automatic protection for more uptime and reliability you can depend on

## Optional Features

- ☒ Variable or fixed speed pump
- ☒ BACnet gateway
- ☒ Dynamic Protection flow meter and manifold
- ☒ Condensate treatment kit
- ☒ Motorized isolation valve
- ☒ CSD-1 package
- ☒ Standard Stock Products

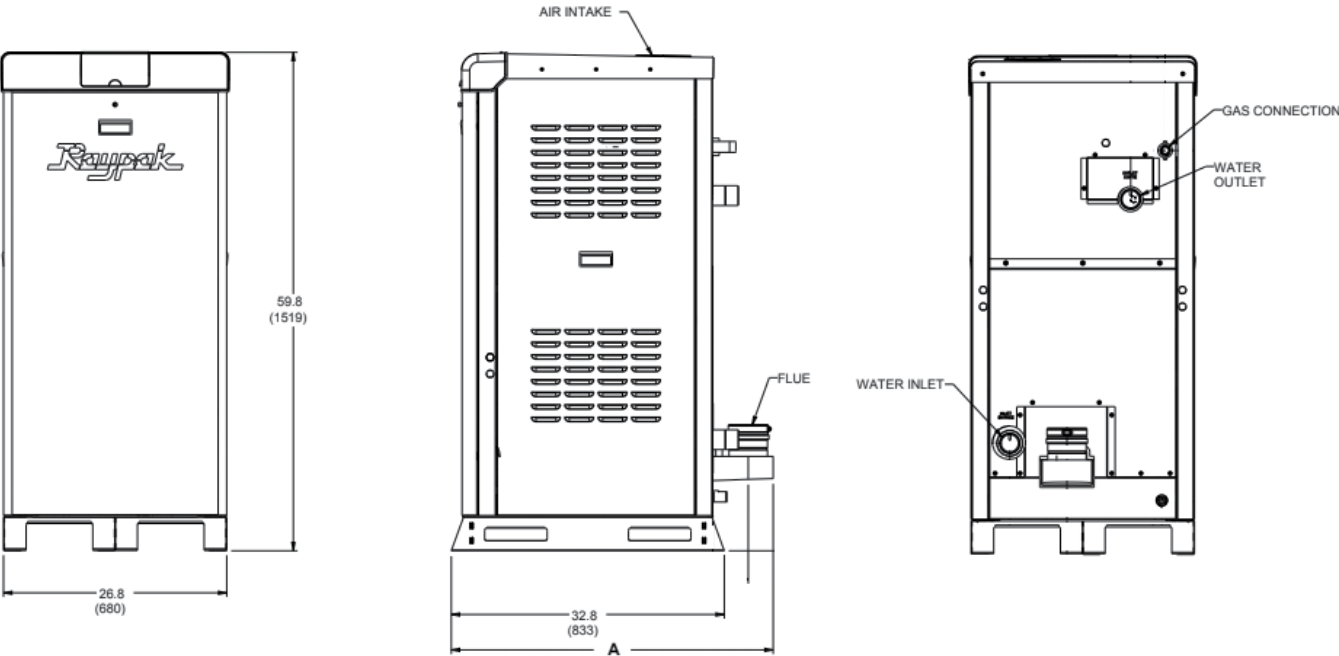
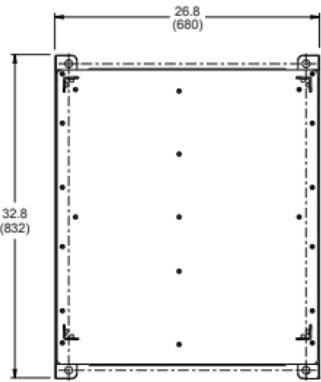
Applicable for hydronic heating in schools, multi-family housing, hospitals, gyms, and more.



XVERS™ L

XVers L - Type H  
Models 406L - 856L

Model (H7-)	MBTUH (kw/h)		Turndown	AHRI Thermal Efficiency	Dimensions In. (mm)				
	Input	Output			A	Water Inlet/Outlet NPT	Flue Ø	Air Intake Ø	Gas NPT
406L	399 (117)	391 (115)	10 to 1	98%	38.6 (980)	2	4 (100)	4 (100)	1
506L	500 (147)	489 (143)	10 to 1	97.8%	38.6 (980)	2	4 (100)	4 (100)	1
606L	600 (176)	586 (172)	7 to 1	97.6%	38.6 (980)	2	4 (100)	4 (100)	1-1/4
726L	725 (213)	705 (207)	7 to 1	97.3%	40 (1016)	2-1/2	6 (150)	6 (150)	1-1/4
856L	850 (250)	826 (242)	7 to 1	97.2%	40 (1016)	2-1/2	6 (150)	6 (150)	1-1/4



HIGH EFFICIENCY

Learn more about XVers L boilers at Raypak.com

# XTherm®

Time honored technology unites  
with cutting-edge advancement.

## 1 MMBTUH - 4 MMBTUH

- H** 96% Efficiency
- WH** 97% Efficiency
- P** 97% Efficiency



Click icon or view standalone page to learn more.



### Maximum Performance

- Hybrid design for maximum thermal efficiency and reliability: finned copper tube heat exchanger with a secondary stainless steel condensing heat exchanger
- Flexible system design ideal for replacement and new construction
- Broadest range of operating temperatures for a condensing boiler

7" touchscreen display



Vertical non-condensing heat exchanger (primary)

316L stainless steel condensing heat exchanger (secondary)

Cold water run system



### Robust Construction

- Indoor/outdoor design with outdoor air intake cover standard
- Heavy gauge galvanized steel weatherproof jacket with UV-resistant powder coat finish
- Factory-mounted and plumbed Cold Water Run system to protect against harmful condensation in the non-condensing heat exchanger



### Installation Flexibility

- Compact design for small spaces and retrofit projects
- Direct vent capable
- Multiple vent material options: PVC, CPVC, Polypropylene, Stainless Steel
- High voltage wiring center located on the rear of the boiler for easy access



### Intelligent Controls

- VERSA IC controls with LCD touchscreen display
- Raymote access
- Cascade up to 8 boilers in parallel or sequential modulation modes for precise control and system optimization

### Optional Features

- ☒ External injector pump
- ☒ Condensate treatment kit
- ☒ BACnet gateway
- ☒ CSD-1 package
- ☒ Standard Stock Product
- ☒ Standard Stock Products

Applicable for hydronic heating, domestic hot water heating, and pool heating for schools, gyms, multi-family housing, and more.



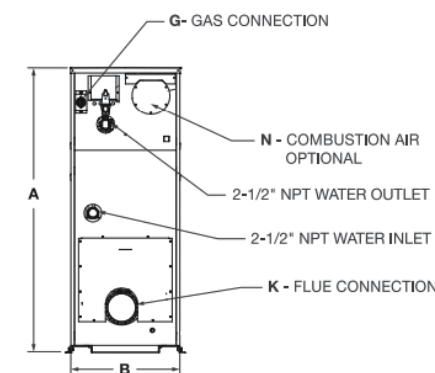
## XTherm - Type H & WH Models 1005A - 4005

Model	MBTUH (kw/h)						Dimensions In. (mm)						
	Input	Output (H)	Output (WH)	Turndown	Thermal Efficiency (H)	Thermal Efficiency (WH)	A Height	B Width	C Base Depth	D Overall Depth*	G NPT	K Flue Ø	N Comb. Air Ø
1005A	999 (292.8)	959 (281.1)	969 (284)	7 to 1	96%	97%	55.25 (1403)	31 (787)	50 (1270)	57.3 (1455)	1-1/4**	6	6
1505A	1500 (439.6)	1440 (422)	1455 (426.4)	7 to 1	96%	97%	67.125 (1705)	31 (787)	50 (1270)	57.5 (1461)	1-1/4**	8	8
2005A	1999 (585.8)	1919 (562.4)	1939 (568.3)	7 to 1	96%	97%	81.125 (2061)	31 (787)	50 (1270)	57.5 (1461)	2**	8	8
3005	3000 (879.2)	2880 (844)	2856 (837)	13 to 1	96%	95.2%	73.25 (1861)	31 (787)	97.5 (2477)	107.5 (2731)	2-1/2	10	10
3505	3500 (1025.7)	3360 (984.7)	3332 (977)	13 to 1	96%	95.2%	78.25 (1988)	31 (787)	97.5 (2477)	107.5 (2731)	2-1/2	10	12
4005	4000 (1172.3)	3840 (1125.4)	3808 (1116)	7 to 1	96%	95.2%	83.5 (2115)	31 (787)	97.5 (2477)	109 (2769)	2-1/2	12	12

WH units have a minimum turndown of 60% of full rate.

\* For 60 PSI PRV standard on H models. Shipped loose on 3005-4005.

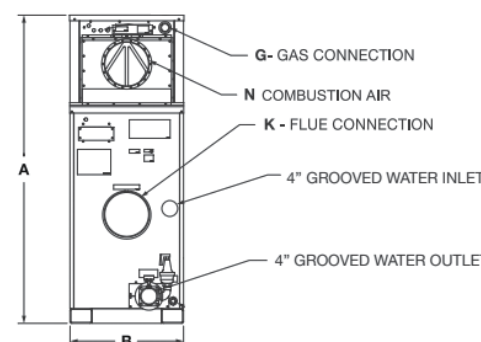
\*\* For natural gas. 1" NPT for propane.



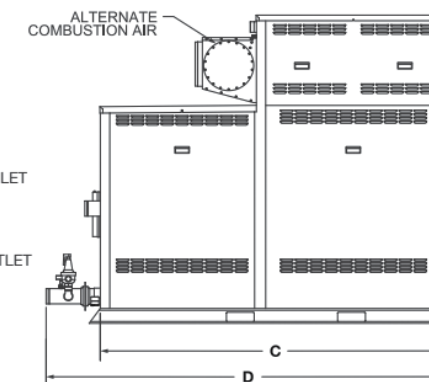
REAR VIEW  
1005A-2005A



SIDE VIEW  
1005A-2005A



REAR VIEW  
3005-4005



SIDE VIEW  
3005-4005



Learn more about  
XTherm boilers at  
Raypak.com



Learn more about  
XTherm water heaters  
at Raypak.com



Learn more about  
XTherm pool heaters  
at Raypak.com

HIGH EFFICIENCY

# XFIIRE™

New design with comfort in mind.

300 MBTUH - 1 MMBTUH

**H** 96-96.5% Efficiency  
**WH** 96-96.5% Efficiency



Click icon or view standalone page to learn more.



## Maximum Performance

- Stainless steel water tube heat exchanger for high efficiency
- Up to 7:1 turndown
- Reduce operating costs and heat your water quicker



This product meets a stringent set of our company's internally defined sustainability standards.



## Sleek Design

- Multi-function status light provides a quick visual indication of the unit's status at a distance while doubling as a service light
- Forklift and pallet jack accessible base for easy transportation and installation
- Indoor/outdoor construction
- Zero side clearance minimizes footprint, the perfect solution for small spaces
- SureRack™ boiler stacking system



## Venting Flexibility

- Direct vent capable
- Multiple vent material options: PVC, CPVC, polypropylene, or stainless steel
- Built-in vent protection with vent temperature sensor



## Intelligent Controls

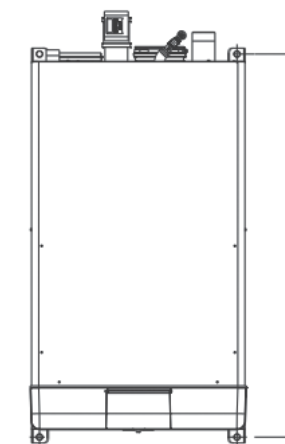
- VERSA IC controls with LCD touchscreen display
- Raymote access
- Cascade up to 8 boilers in parallel or sequential modulation modes to optimize performance

## Optional Features

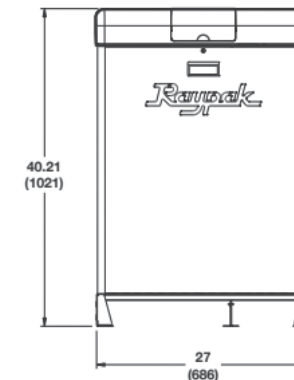
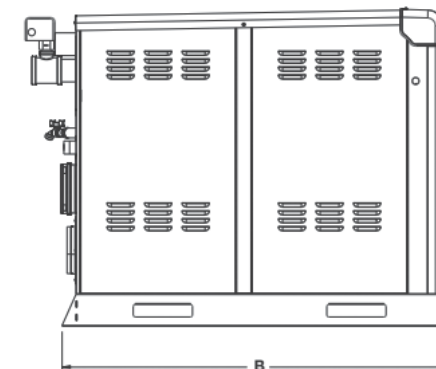
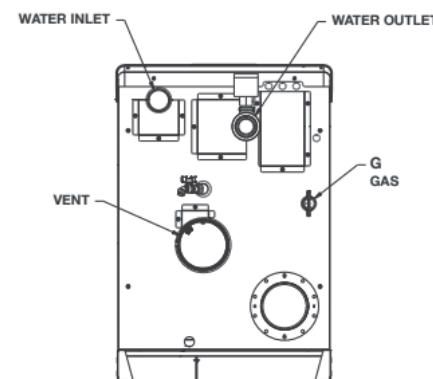
- ☒ Dynamic Protection flow meter
- ☒ BACnet gateway
- ☒ Vent adapters
- ☒ Standard Stock Product
- ☒ Optional Pump
- ☒ Condensate treatment kit
- ☒ SureRack™

Applicable for hydronic heating and domestic hot water heating for schools, multi-family housing, gyms, and more.

Model (H7/WH7-)	MBTUH (kW/h)		Turndown	AHRI Thermal Efficiency	Dimensions - in. (mm)					
	Input (H)	Input (WH)			A	B Base Depth	Water Inlet/Outlet NPT	G Gas Conn. NPT	Flue Ø	Air Intake Ø
300B	300 (88)	289.5 (85)	7 to 1	96.5%	35.33 (897)	36.83 (935)	2	1	4 (100)	4 (100)
400B	399 (117)	383 (112)		96%	35.33 (897)	36.83 (935)	2	1	4 (100)	4 (100)
500B	500 (147)	480 (141)			35.33 (897)	36.83 (935)	2	1	4 (100)	4 (100)
650B	650 (191)	624 (183)			43.75 (1111)	45.22 (1148)	2	1	6 (150)	6 (150)
800B	800 (235)	768 (225)			43.75 (1111)	45.22 (1148)	2	1	6 (150)	6 (150)
1000B	1000 (294)	960 (281)			48.50 (1231)	50 (1270)	2-1/2	1-1/4	6 (150)	6 (150)



HIGH EFFICIENCY



Learn more about  
**XFIIRE boilers at  
Raypak.com**



Learn more about  
**XFIIRE water heaters at  
Raypak.com**



# TRITON<sup>®</sup>

The most intelligent high efficiency commercial gas water heater in the market.

130 MBTUH - 400 MBTUH

WH 95-98% Efficiency  
80 & 100 gallons (ASME & non-ASME)



Click icon to learn more.



### Eliminate the Emergency

- Built-in intelligence helps eliminate business downtime
- LeakGuard™ all-inclusive leak detection system with proprietary auto shut-off valve limits leakage to no more than 24 ounces of water<sup>1</sup>
- LeakSense™ detects leaks as small as a grain of sand
- Systematic health checks: ongoing self-monitoring to detect and alert potential issues



### Convenient Controls

- Remotely monitor vital components with EcoNet Smart Monitoring Technology
- Receive maintenance alerts and reminders for multiple sites via the EcoNet app
- Save energy by selecting occupied hours for Triton to operate only when needed



### Easy Installation & Retrofit

- Designed to replace any other commercial gas water heater: manifolds with any other brand and features five water inlet and outlet connections for easy piping
- Multiple vent material options: Polypropylene, PVC, CPVC, InnoFlue® Flex Vent, and ABS
- Built-in condensate neutralizer eliminates the need for a separate device for safe drainage



### Built to Last

- Durable ASME-grade steel triple-pass heat exchanger and power anode rod
- Built to last five years longer than the industry standard, saving more than \$4,500 on replacement costs<sup>2</sup>

### Optional Accessories

- ☒ Flex vent kits
- ☒ Concentric vent kits

ASME-GRADE  
Steel Heat Exchanger

Applicable for domestic hot water heating in gyms, commercial kitchens, small businesses, and more.



Learn more about  
Triton water heaters  
at Raypak.com

<sup>1</sup>SS model only. <sup>2</sup>Source: According to the US Department of Energy, a commercial water heater is expected to last seven years. Test data shows Triton is rated to last 12 years. The longer life will help avoid estimated replacement costs of \$4,500.

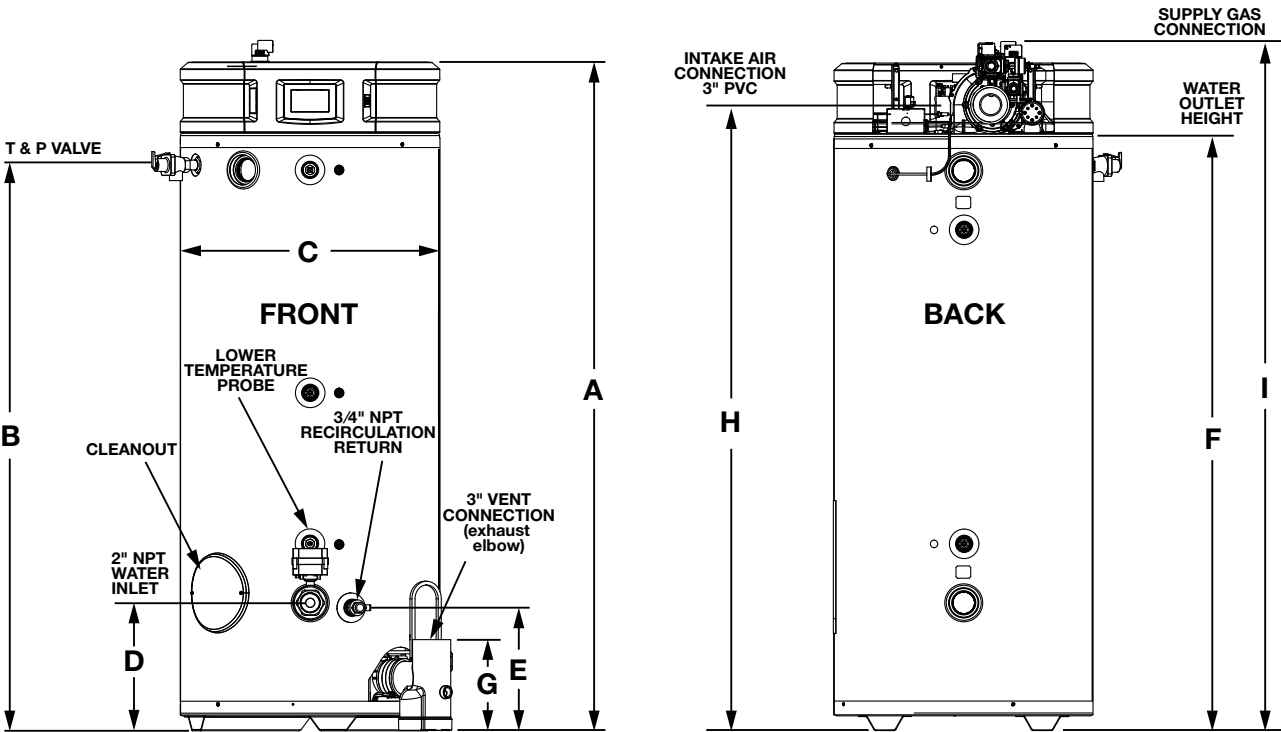
TRITON<sup>™</sup>

Triton - Type GHE  
Models 80 - 100 SS/SU



Model Number	A	B	C	D	E	F	G	H	I	Vent	Side Water Connection	Top Outlet
											Inlet/Outlet	
GHE80SU/SS-130(A)	67-7/8"	57.43"	26-3/8"	13"	12-1/2"	60-1/2"	10-5/8"	63-5/8"	70-1/16"	2", 3", 4"	2" NPT	1.5" NPT
GHE80SU/SS-160(A)	67-7/8"	57.43"	26-3/8"	13"	12-1/2"	60-1/2"	10-5/8"	63-5/8"	70-1/16"	2", 3", 4"	2" NPT	1.5" NPT
GHE80SU/SS-200(A)	67-7/8"	57.43"	26-3/8"	13"	12-1/2"	60-1/2"	10-5/8"	63-5/8"	70-1/16"	2", 3", 4"	2" NPT	1.5" NPT
GHE80SU/SS-300(A)	67-7/8"	57.43"	26-3/8"	13"	12-1/2"	60-1/2"	10-5/8"	63-5/8"	70-1/16"	3", 4", 6"	2" NPT	1.5" NPT
GHE100SU/SS-130(A)	77"	66-3/4"	26-3/8"	13"	12-1/2"	69.80"	10-5/8"	72-3/4"	77-1/2"	2", 3", 4"	2" NPT	1.5" NPT
GHE100SU/SS-160(A)	77"	66-3/4"	26-3/8"	13"	12-1/2"	69.80"	10-5/8"	72-3/4"	77-1/2"	2", 3", 4"	2" NPT	1.5" NPT
GHE100SU/SS-200(A)	77"	66-3/4"	26-3/8"	13"	12-1/2"	69.80"	10-5/8"	72-3/4"	77-1/2"	2", 3", 4"	2" NPT	1.5" NPT
GHE100SU/SS-250(A)	77"	66-3/4"	26-3/8"	13"	12-1/2"	69.80"	10-5/8"	72-3/4"	77-1/2"	3", 4", 6"	2" NPT	1.5" NPT
GHE100SU/SS-300(A)	77"	66-3/4"	26-3/8"	13"	12-1/2"	69.80"	10-5/8"	72-3/4"	77-1/2"	3", 4", 6"	2" NPT	1.5" NPT
GHE100SU/SS-400(A)	77"	66-3/4"	26-3/8"	13"	12-1/2"	69.80"	10-5/8"	72-3/4"	77-1/2"	3", 4", 6"	2" NPT	1.5" NPT

0" clearance to all combustible surfaces on sides and back; 6" for top.



HIGH EFFICIENCY

# XPak FT<sup>®</sup>

High-efficiency wall mount condensing boiler with virtually no installed footprint.

199 MBTUH - 399 MBTUH

H 94.8-96% Efficiency



Click icon or view standalone page to learn more.



### Maximum Performance

- Ultra-high efficiency and up to 10:1 turndown
- Stainless steel fire-tube heat exchanger
- Modulating condensing design for reduced operating costs and energy savings



3-in-1 vent adaptor comes standard on all XPak FT models.



### Easy Installation

- Compact boiler easily mounts to walls for virtually no installed footprint<sup>1</sup>
- Water, gas, and electrical connections and condensate drain on the bottom of the unit
- Vent connections on the top of the unit



### Venting Flexibility

- Direct vent ready
- 3-in-1 vent adapter for multiple vent material options: stainless steel, polypropylene, PVC, CPVC
- Compatible with concentric venting, twin penetrations, horizontal or vertical venting



### Simple Controls

- VERSA IC controls with LCD display
- Cascade up to 8 boilers in parallel or sequential modulation modes
- Integrated BMS connectivity

### Optional Features

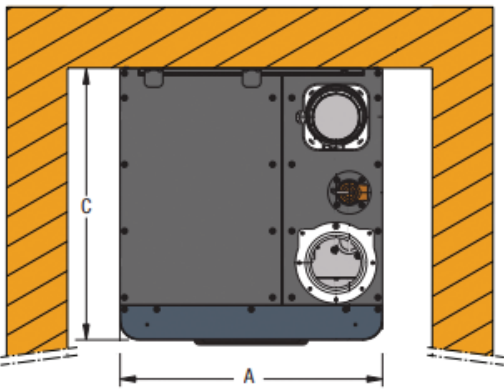
- ☒ Flow switch
- ☒ Low water cut-off
- ☒ Cast iron or stainless steel pump
- ☒ High and low gas pressure switches
- ☒ Condensate treatment kit

<sup>1</sup>For indoor installation only.

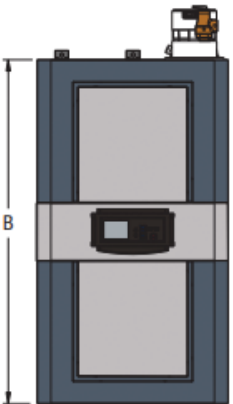


## XPak FT - Type H Models 198AR - 398A

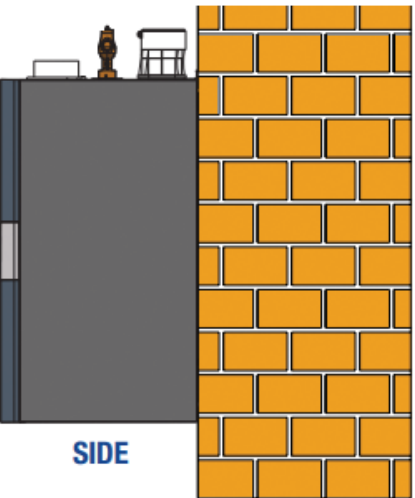
Models 198AR thru 398A



TOP



FRONT



SIDE

XPakFT Model	AFUE			Dimensions (in.)							Water Content (gal.)
	MBTUH Input*	BTUH Output	% Efficiency	A	B	C	Gas (NPT)	Water (NPT)	Flue Vent Ø	Combustion air Ø	
198AR	199	189,050	95.0	18-5/8	36-3/16	19-3/8	3/4	1-1/4	3	3	5.2
278AR	275	260,700	94.8	18-5/8	36-3/16	19-3/8	3/4	1-1/4	3	3	4.5
398A	399	383,040	96.0**	21-7/16	38-5/8	22-1/8	3/4	1-1/2	4	4	5.9

\* Ratings for models natural or propane gas and for elevations up to 4,500 ft. above sea level. For higher elevations, consult the factory.

\*\* Model 398A AFUE value is Thermal Efficiency per BTS-2000.

Applicable for hydronic heating for small office buildings, single-family homes, and more.



Learn more about XPak FT boilers at [Raypak.com](http://Raypak.com)

HIGH EFFICIENCY

# MVB®

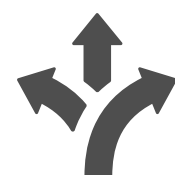
Engineered for reliability and long-term performance.

## 500 MBTUH - 4 MMBTUH

- H** 84-86.2% Efficiency<sup>1</sup>
- WH** 85-87% Efficiency<sup>2</sup>
- P** 83-83.3% Efficiency<sup>3</sup>



Click icon or view standalone page to learn more.



### Installation Flexibility

- Compact vertical design fits through a standard doorway, perfect for small spaces and retrofit projects
- Direct vent capable with multiple venting configurations for versatility, Cat I and Cat IV models available
- High voltage wiring center located on the rear of the boiler for easy access

7" color touchscreen display

Low voltage wiring terminal (not shown)

Status light and on/off switch



### Robust Construction

- Indoor/outdoor design with outdoor air intake cover standard
- Heavy gauge galvanized steel weatherproof jacket with UV-resistant powder coat finish
- Dependable non-condensing copper or cupronickel finned water tube heat exchanger



### Maximum Performance

- Reliable, efficient performance reduces operating costs and enhances heating capability
- Can be equipped with Cold Water Start or Cold Water Run systems, which protect against harmful condensation



### Intelligent Controls

- VERSA IC controls with LCD touchscreen display
- Raymote access
- Cascade up to 8 boilers in parallel or sequential modulation modes for optimized performance

### Optional Features

- ☒ Cupronickel heat exchanger
- ☒ BACnet gateway
- ☒ Fixed speed pump
- ☒ Cold Water Protection
- ☒ CSD-1 package
- ☒ Standard Stock Products

<sup>1</sup>Cat. I vent 84%. Cat. IV vent 85%-86.2%.

<sup>2</sup>Cat. I vent 83-83.3%. Cat. IV vent 85%-87%.

<sup>3</sup>Pool sizes vary by model.

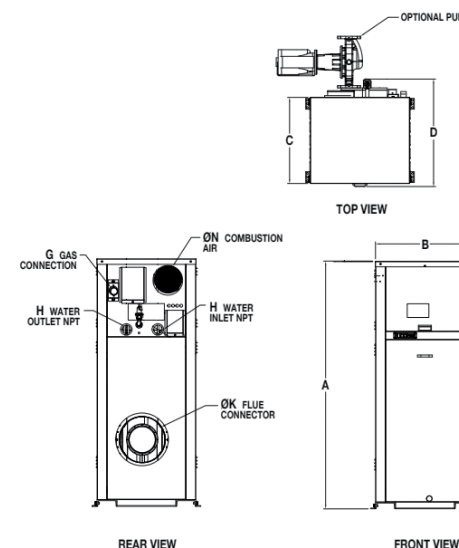


## MVB - Type H & WH Models 503/4A - 4003

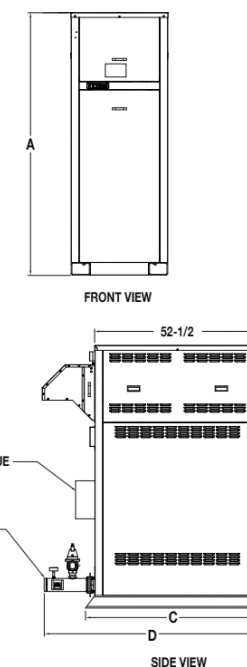
Model	MBTUH (kW/h)							Dimensions - in. (mm)				Dimensions - in.			
	Input (H)	Input (WH)	Output (H)	Output (WH)	Turndown (H)	Thermal Efficiency % (H)	Thermal Efficiency % (WH)	A Height	B Width	C Base Depth	D Overall Depth	G (Nat) NPT**	H Water	K Flue Ø	N C/A Ø
504A	500 (146.5)		420 (123.1)	415 (121.6)	1.7 to 1	84	83	43 1/4 (1098.6)	30 (762.0)	26 (660.4)	32 (812.8)	1	2	8	6
754A*	750 (219.8)		630 (184.6)	623 (182.5)		84	83	49 (1244.6)	30 (762.0)	26 (660.4)	32 (812.8)	1	2	10	6
1104A*	1100 (322.3)	1045 (306.2)	924 (270.7)	870 (254.9)		84	83.3	55 (1397.0)	30 (762.0)	26 (660.4)	32 (812.8)	1 1/4	2 1/2	10	6
1504A*	1500 (439.5)	1425 (417.5)	1260 (369.2)	1187 (347.8)		84	84	61 (1549.4)	30 (762.0)	26 (660.4)	32 (812.8)	1 1/4	2 1/2	12	8
2004A*	1999 (585.7)	1900 (556.7)	1679 (491.9)	1583 (463.8)		84	84	75 (1905.0)	30 (762.0)	26 (660.4)	32 (812.8)	2	2 1/2	14	8
503A	500 (146.5)		431 (126.3)	435 (127.5)	7 to 1	86.2	86.2	43 (1092.2)	30 (762.0)	26 (660.4)	32 (812.8)	1	2	6	6
753A	750 (219.8)		647 (189.6)	653 (191.3)		86.2	86.2	49 (1244.6)	30 (762.0)	26 (660.4)	32 (812.8)	1	2	6	6
1003A	999 (292.7)		861 (252.3)	869 (254.8)		86.2	86.2	55 (1397.0)	30 (762.0)	26 (660.4)	32 (812.8)	1 1/4	2 1/2	6	6
1253A	1250 (366.3)		1078 (315.9)	1088 (318.8)		86.2	86.2	61 (1549.4)	30 (762.0)	26 (660.4)	32 (812.8)	1 1/4	2 1/2	8	8
1503A	1500 (439.5)		1293 (378.8)	1305 (382.4)		86.2	86.2	67 (1701.8)	30 (762.0)	26 (660.4)	32 (812.8)	1 1/4	2 1/2	8	8
1753A	1750 (512.8)		1508 (441.8)	1523 (446.2)		86.2	87	75 (1905.0)	30 (762.0)	26 (660.4)	32 (812.8)	2	2 1/2	8	8
2003A	1999 (585.7)		1723 (504.8)	1739 (509.5)		86.2	87	81 (2057.4)	30 (762.0)	26 (660.4)	32 (812.8)	2	2 1/2	8	8
2503	2501 (732.8)		2126 (622.9)			85	85	68 1/4 (1733.6)	30 7/8 (784.2)	55 1/2 (1409.7)	68 1/2 (1739.9)	2 1/2	4	10	10
3003	3000 (879.0)		2550 (747.2)			85	85	73 1/4 (1860.6)	30 7/8 (784.2)	55 1/2 (1409.7)	68 1/2 (1739.9)	2 1/2	4	10	10
3503	3500 (1025.5)		2975 (871.7)			85	85	78 1/4 (1987.6)	30 7/8 (784.2)	55 1/2 (1409.7)	68 1/2 (1739.9)	2 1/2	4	12	12
4003	4000 (1172.0)		3400 (996.2)			85	85	83 1/4 (2114.6)	30 7/8 (784.2)	55 1/2 (1409.7)	68 1/2 (1739.9)	2 1/2	4	12	12

\*Category I with vertical vent, category III with horizontal venting and no extractor.

\*\*For Propane, gas connection is 1" for 503A thru 2004A and 2-1/2" for 2503 thru 4003.



Models 503A-2003A, 504A-2004A



Models 2503-4003



Learn more about  
MVB boilers at  
Raypak.com



Learn more about  
MVB water heaters  
at Raypak.com



Learn more about  
MVB pool heaters  
at Raypak.com



# HI DELTA®

Simple design, reliable performance.



This product meets a stringent set of our company's internally defined sustainability standards.

## 300 MBTUH - 2.3 MMBTUH

- H** 84% Efficiency
- WH** 83.1-85% Efficiency
- P** 83.1% Efficiency<sup>3</sup>



Click icon or view standalone page to learn more.



### Reliable Performance

- Simple multi-stage operation and fixed blower motors for reliable performance and easy maintenance
- Compatible with Cold Water Start and Cold Water Run systems for extended system protection
- Innovative patented burner “security blanket” minimizes downtime and prevents metal fatigue, extending the life of the unit



### Venting Flexibility

- Direct vent capable
- Ducted combustion air ready with rear vent option available for easy installation in any space
- Cat I vertical venting, Cat III sidewall venting (no extractor required for most applications)



### Installation Versatility

- Vertically stack units with no offset with the SureRack™ Kit – perfect for small areas<sup>1</sup>
- Indoor/outdoor construction with waterproof controls for enhanced durability and longer life
- Flex Gas Dual-Fuel System allows for rapid fuel switchover between natural gas and propane while firing for interruptible-fuel applications — in less than one minute.<sup>2</sup>



### Simple Controls

- VERSA IC controls with LCD display
- Easy front access for simple setup and troubleshooting
- Cascade up to 8 units in parallel or sequential modulation modes for precise control and optimization

### Optional Features

- ☒ Cupronickel heat exchanger
- ☒ Cold Water Protection
- ☒ Fixed speed pump
- ☒ BACnet gateway
- ☒ Flex Gas dual-fuel system
- ☒ SureRack™

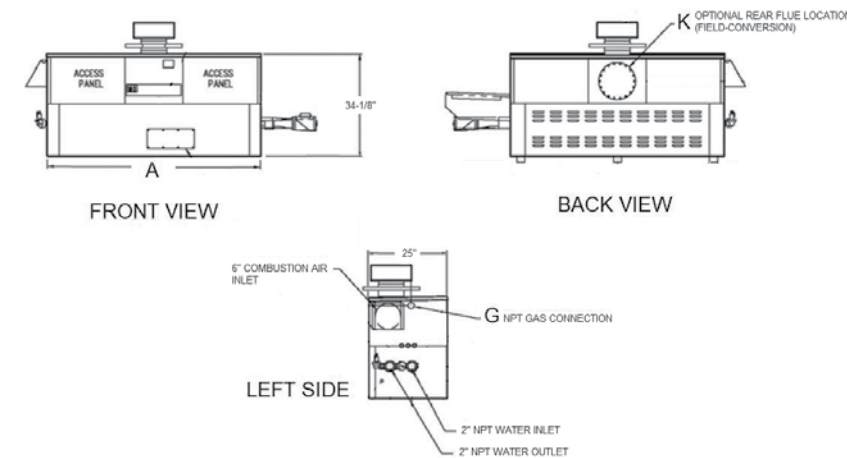
<sup>1</sup>Units remain fully serviceable when stacked.

<sup>2</sup>Not available on 2002C model.  
Factory-installed and tested system.

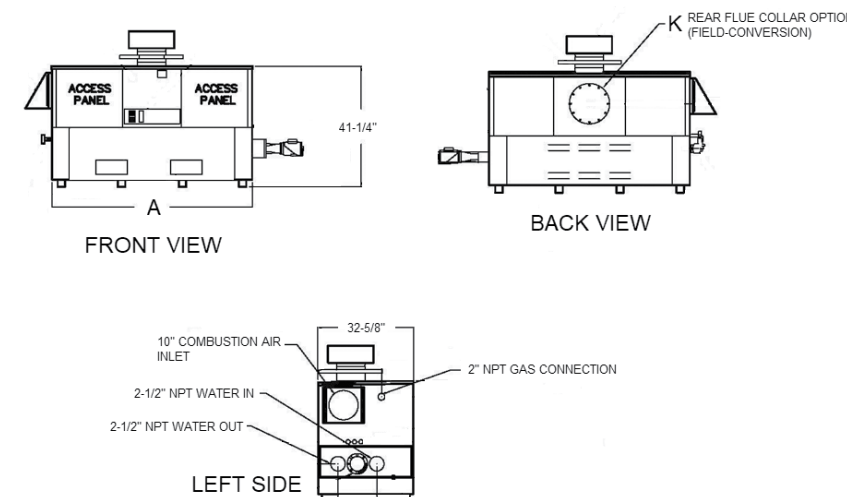


## Hi Delta Boilers and Water Heaters Models 302C - 2342C

### Hi Delta 302C-902C Boilers



### Hi Delta 992C-2342C Boilers



<sup>1</sup> Ratings for models 302C-2342C for natural or propane gas and for elevations up to 4,500 ft. above sea level. For higher elevations, consult the factory.

<sup>2</sup> These efficiencies are for a copper heat exchanger. See product submittal for CuNi efficiency data.

<sup>3</sup> Natural gas only. Not available for propane.

Applicable for heating  
in hospitals, schools,  
industrial processes,  
and more.



Learn more about  
**Hi Delta boilers**  
at Raypak.com



Learn more about  
**Hi Delta water heaters**  
at Raypak.com



Learn more about  
**Hi Delta pool heaters**  
at Raypak.com

# DELTA LIMITED®

The perfect heating solution at a fraction of the cost.

## 400 MBTUH - 2.3 MMBTUH

- H** 84% Efficiency
- WH** 83.1-85% Efficiency



Click icon or view standalone page to learn more.



### Reliable Performance

- Simple multi-stage operation for reliable performance and easy maintenance
- Copper fin-tube heat exchanger and glass-lined cast iron headers provide longer life and maximum durability
- Patented burner “security blanket” minimizes downtime and prevents metal fatigue



### Venting Flexibility

- Direct vent capable
- Ducted combustion air ready with rear vent option available for easy installation
- Cat I vertical venting, Cat III sidewall venting (no extractor required for most applications)



### Installation Versatility

- Vertically stack units with no offset with the SureRack Kit to save space in small areas<sup>1</sup>
- Indoor/outdoor construction with enclosed controls and PolyTuf powder coated cabinet withstands even the harshest weather conditions



### Simple Controls

- Simple electronic controller and status display lights for easier monitoring and troubleshooting

### Optional Features

- ☒ Cupronickel heat exchange
- ☒ Fixed speed pump
- ☒ SureRack Kit
- ☒ Cold Water Protection
- ☒ Digital temperature controller

Applicable for heating in multi-family housing, schools, industrial processes, and more.

The Delta Limited product line is not approved for sale or distribution in California.

<sup>1</sup>Units remain fully serviceable when stacked.



## Delta Limited - Type H & WH Models 399B - 2339B

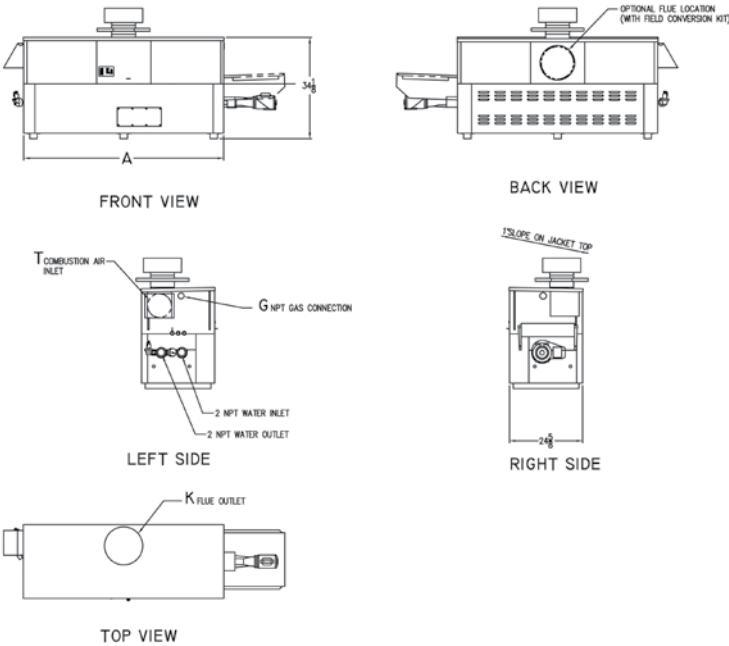
### 399B-899B Models

Model	MBTUH (kW/h)		A Width	G NPT	H NPT	K	T
	Input	Output					
399B	399	335	43	3/4	2	6	6
499B	500	420	50	1 1/4	2	6	6
649B	650	546	60 1/2	1 1/4	2	8	6
749B	750	630	67 1/2	1 1/4	2	8	6
899B	900	756	78	1 1/4	2	8	6

Dimensions are in inches.

Rates shown are for natural or propane gas, and elevations up to 4,500 feet. For installation above 4,500 feet, please contact manufacturer.

Recommended natural gas supply pressure is 7 - 10.5" WC.  
Recommended propane gas supply pressure is 11 - 13" WC.



### 989B-2339B Models

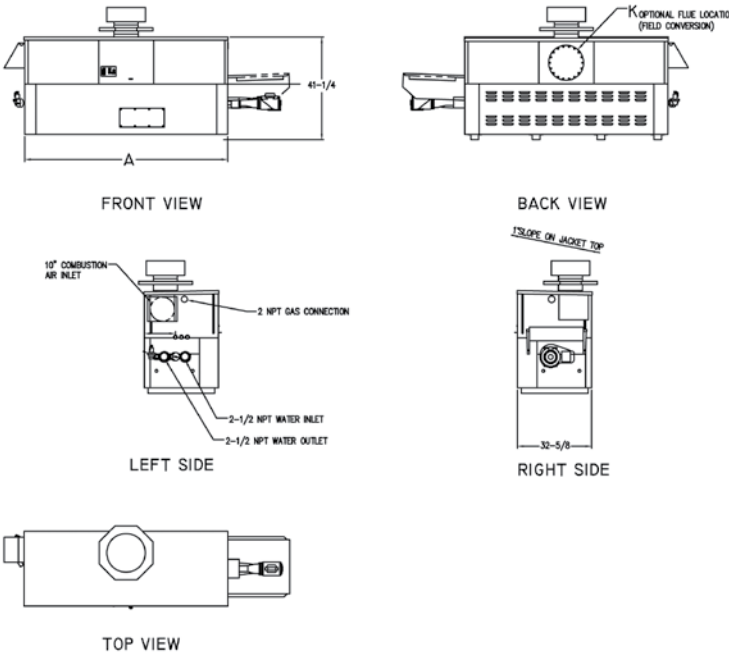
Model	MBTUH (kW/h)		Firing Stages	A Width	H NPT	K
	Input	Output				
989B	990	832	2	57-1/8	2 1/2	10
1259B	1260	1058	3	68-1/2	2 1/2	12
1529B	1530	1285	4	79-7/8	2 1/2	12
1799B	1800	1512	4	91-1/8	2 1/2	14
1999B*	1999	1679	4	102-1/2	2 1/2	14
2069B	2070	1739	4	102-1/2	2 1/2	14
2339B	2340	1966	4	113-7/8	2 1/2	16

\*Natural Gas Only

Dimensions are in inches.

Rates shown are for natural or propane gas, and elevations up to 4,500 feet. For installation above 4,500 feet, please contact manufacturer.

Recommended natural gas supply pressure is 7 - 10.5" WC.  
Recommended propane gas supply pressure is 11 - 13" WC.



Learn more about Delta Limited boilers at [Raypak.com](http://Raypak.com)


Learn more about Delta Limited water heaters at [Raypak.com](http://Raypak.com)

# HI DELTA<sup>®</sup> SS

A simple and compact solution for all your heating needs.

150 MBTUH - 399 MBTUH

- H** 84-85% Efficiency
- WH** 85% Efficiency

 Click icon or view standalone page to learn more.



## Reliable Performance

- Simple 2-stage firing for reliable heating
- Corrosion-resistant stainless-steel pump with flanges for enhanced operation and longer life
- Patented burner “security blanket” provides a streamlined air-gas pathway for complete sealed combustion

## Venting Flexibility

- Direct vent capable and ducted combustion air ready
- Cat I vertical venting, Cat III sidewall venting (no extractor required for most applications) for easy installation

## Installation Versatility

- Compact design perfect for small spaces (footprint is less than 6.9 ft<sup>2</sup> for all models)
- Durable construction for flexible indoor/outdoor installation
- Available for natural gas or propane to meet your needs

## Simple Controls

- Electronic controller with outdoor reset varies the setpoint as the air temperature changes to optimize performance
- Simple status display lights for easier monitoring and troubleshooting

### Optional Features

- ☒ Cupronickel heat exchanger<sup>1</sup>
- ☒ Temperature controllers
- ☒ Cold Water Protection
- ☒ Low water cut-off
- ☒ Fixed speed pump
- ☒ Bronze headers
- ☒ Standard Stock Products

<sup>1</sup>Water heater (WH) models only.

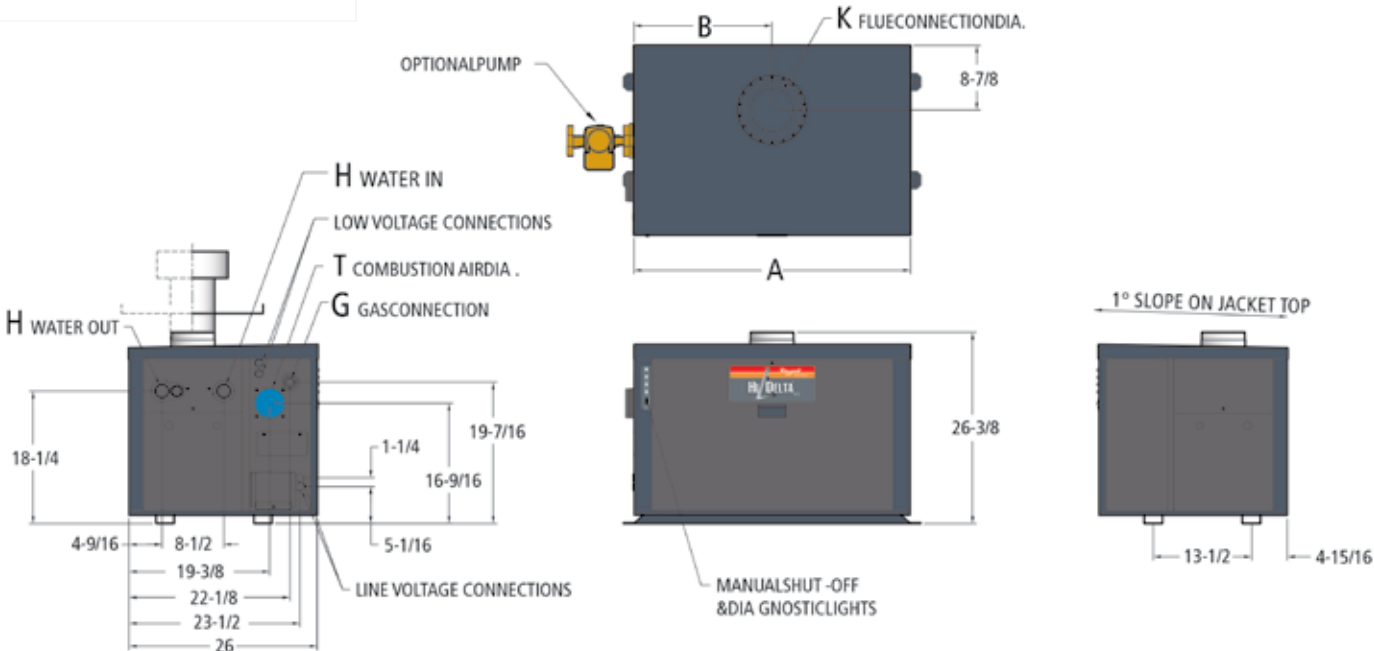
Applicable for hydronic heating for small office buildings, single-family homes, and more.





## Hi Delta SS - Type H & WH Models 151R - 401

Model	MBTUH Input	MBTUH Output	AFUE (%)	Dimensions (in.)				
				A Width	G (NPT)	H (NPT)	K Flue Ø	T Ø
HD151	150	126	85	21-7/8	3/4	1-1/2	4	4
HD201	199	167	85	25-1/16	3/4	1-1/2	5	4
HD251	250	210	85	28-5/16	3/4	1-1/2	5	4
HD301	299	251	85	31-9/16	3/4	1-1/2	5	4
HD401	399	335	84*	38-1/16	3/4	1-1/2	6	4

\*Thermal efficiency



 Learn more about Hi Delta SS boilers at Raypak.com

 Learn more about Hi Delta SS water heaters at Raypak.com

MID EFFICIENCY



# Raytherm™

Engineered for simplicity, durability, and reliability.

511 MBTUH - 4 MMBTUH

WH 82% Efficiency



### Maximum Durability

- Reliable and cost-effective copper fin-tube heat exchanger design
- Rugged bronze headers resist corrosion and are easily removed for servicing
- Corrosion-resistant steel fittings are brush-galvanized against rust to extend the life of the unit
- Polytuf powder-coat finish jacket for indoor/outdoor performance and durability



### Reliable Performance

- Spark-to-pilot ignition for reliable startup
- Stainless steel burners for precise combustion at all firing rates, quiet operation, and corrosion resistance
- Floating return header protects the heat exchanger from thermal shock



### Easy to Service

- Enclosed controls are easily accessed behind a removable door for inspection and servicing
- Expertly designed tube heat exchanger eliminates repair and maintenance problems while delivering reliable water heating and cost savings
- Slide-out burner tray for easy inspection and servicing

**Expert Support:** With decades of experience, Raypak's team of experts is available to help with every aspect of the job, from sizing to post-installation technical support

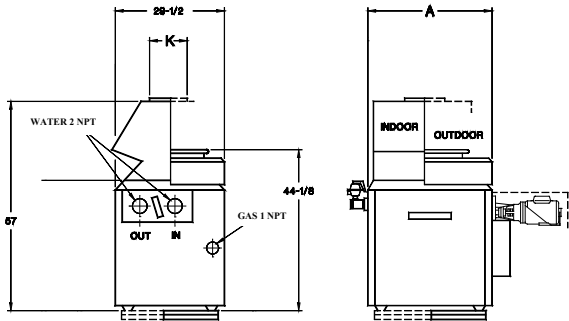
### Optional Features

- ☒ Low water cut-off probe
- ☒ High and low gas pressure switches

Applicable for water heating in schools, military bases, hotels, apartment buildings, and more.



Raytherm®

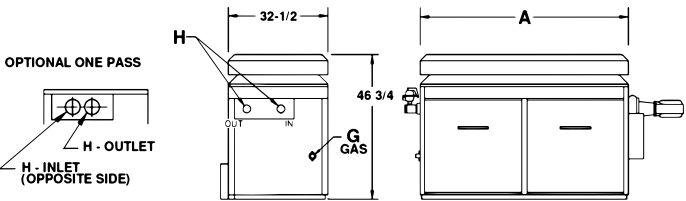


Models 514-824 (Indoor/Outdoor)

Model	MBTUH*		Dimensions (in.)					
	Input	Output	A Width	Overall Height		Depth	Water Conn.	K Flue Dia.
514	511.5	419.4	32-3/4	57	44-1/8	29-1/2	2	10
624	627	514.2	37-1/2					12
724	726	595.3	41-5/8					12
824	825	676.5	45-3/4					14

\*For natural gas units; for propane units, use .94 multiplier.

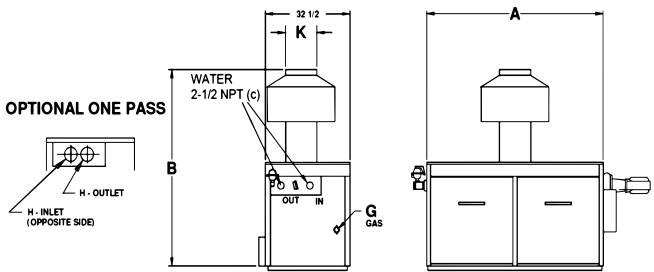
## Raytherm - Type WH Models 514 - 4001



Models 926-1758 (Outdoor)

Model	MBTUH*		Dimensions (in.)				
	Input	Output	A Width	Overall Height	Depth	G Gas Conn.	H Water Conn.
926	926	759.3	52-3/8	46-3/4	32-1/2	1	2-1/2 (b)
1083	1083	888.1	59-1/4			1 (a)	
1178	1178	966	63-5/8			1 (a)	
1287	1287	1055.3	68-5/8			1-1/4	
1414	1413	1159	74-7/8			1-1/4	
1571	1570	1287.4	81-1/8			1-1/4	
1758	1758	1441.6	89-3/8			1-1/4	

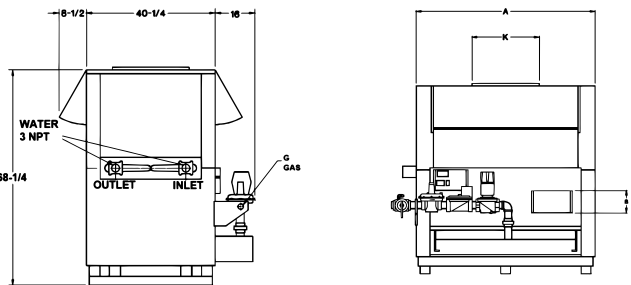
\*For natural gas units; for propane units, use .94 multiplier  
(a) 1" or 1-1/4", depending on boiler type or code requirements  
(b) 3" NPT on single-pass option



Models 962-1826 (Indoor)

Model	MBTUH*		Dimensions (in.)					
	Input	Output	A Width	B Overall Height	Depth	G Gas Conn.	H Water Conn.	K Flue Dia.
962	961.7	788.6	52-3/8	76-1/8 (a)	32-1/2	1	2-1/2	14
1125	1124.7	922.3	59-1/4			1 (b)		16
1223	1222.5	1002.5	63-5/8			80-1/8 (a)		1-1/4
1336	1336.6	1083	68-5/8					
1468	1467	1203	74-7/8					
1631	1630	1336.6	81-1/8					
1826	1825.6	1497	89-3/8					20

\*For natural gas units; for propane units, use .94 multiplier  
(a) Add 1-1/8" to overall height for combustible floor shield option  
(b) 1" or 1-1/4" contingent on boiler type or code requirements



Models 2100-4001 (Indoor)

Model	MBTUH*		Dimensions (in.)					
	Input	Output	A Width	Overall Height	Overall Depth	G Gas Conn.	Water Conn.	K Flue Dia.
2100	2100	1722	61	68-1/4	64-3/4	(a)	3	24
2500	2499	2049.2	70			(a)		26
3001	3000	2460	81-1/4			2		28
3500	3500	2870	92-1/2			2		30
4001	4000	3280	103-3/4			2		32

\*For natural gas and propane  
(a) 1-1/2" or 2" contingent on boiler type code requirements



Learn more about  
Raytherm water heaters  
at Raypak.com

ATMOSPHERIC

COMMERCIAL HEAT PUMP
WATER HEATER

Super efficient, surprisingly versatile, sustainable solution.

60 MBTUH & 135 MBTUH

WH 1.91 - 6.13 C.O.P.
208 or 240 Volt / 1 PH or 480 Volt / 3 PH



Proven Performance

- Technology has been used in Australia's challenging environments for over a decade
Suits most mild climates - rated up to 113°F with automatic defrost for lower temps down to 41°F
Exceptional durability - high quality components and epoxy-coated evaporator coils provide protection in corrosive environments



Applicable for domestic hot water heating in multi-family housing, hotels, corporate campuses, and more.



Sustainability

- Super high efficiency - up to 6.13 Coefficient of Performance (COP) uses less energy than natural gas or propane
Decarbonization qualification - reduced carbon footprint
Improved building ratings - ideal for green building programs and increased efficiency ratings like LEED
Building energy compliance - supports requirements set forth in legislative bills SB 350, AB 758, SB 1477, AB 3232
Listed in CBECC Title 24 Software



Easy Installation & Service

- Flexible install options - reduced system footprint with stackable models and vertical or horizontal exhaust options for a custom fit
Design customization - single or multiple heat pumps and storage units easily meet facility performance and layout requirements
Faster servicing - control panel provides on-board diagnostics and system configuration

Optional Features

- Modbus / BACnet interface
LAN cable
Tanks - storage, electric backup
Pumps



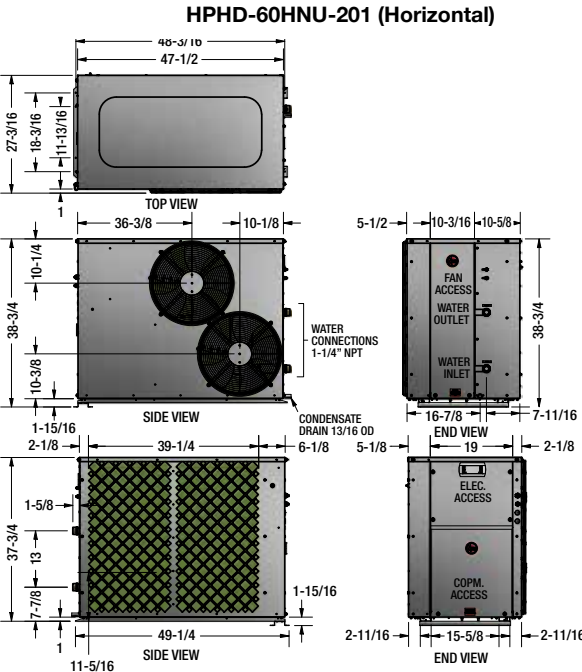
This product meets a stringent set of our company's internally defined sustainability standards.



Heat Pump Split System Models 60 & 135 MBTUH

Air to Water 60k BTU/h Heat Pump Specifications

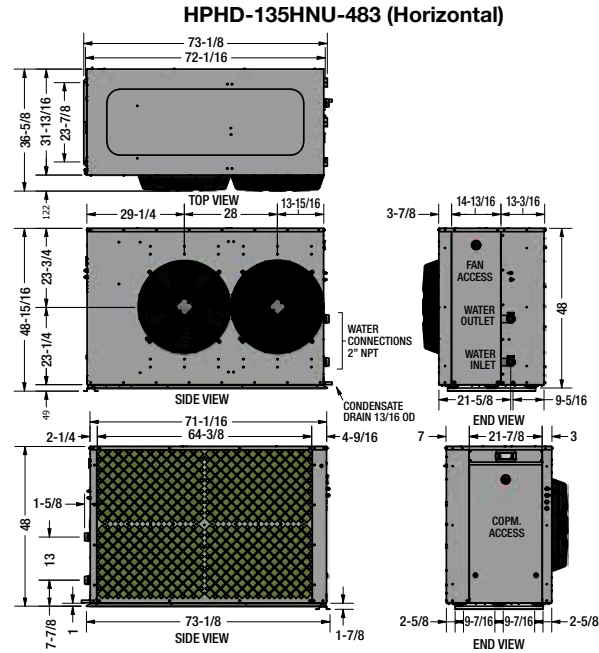
Table with 5 columns: Model Number, HPDH-60HNU-201 (Horizontal), HPDH-60VNU-201 (Vertical), and rows for ELECTRICAL INPUT, TECHNICAL DATA, and GENERAL INFORMATION.



When units are placed side by side, allow at least 40" between evaporator coils.
Rating Conditions: 80°F ambient, 60% RH, 100°F Water in, 110°F Water out.
\* At 60% RH
\*\*Max outlet temperature when ambient is above 70°F.

Air to Water 135k BTU/h Heat Pump Specifications

Table with 5 columns: Model Number, HPDH-135HNU-483 (Horizontal), HPDH-135VNU-483 (Vertical), and rows for ELECTRICAL INPUT, TECHNICAL DATA, and GENERAL INFORMATION.



For the vertical dimensions, please check the spec sheet or brochure on Raypak.com.

HIGH EFFICIENCY

Learn more about Commercial Heat Pumps at Raypak.com

HEAVY DUTY ELECTRIC WATER HEATER

High efficiency, decarbonized, minimal installation solution.

15kW - 60kW (51 - 204 MBTUH)

98% Efficiency  
85 & 120 gallons (ASME and non-ASME), 175 gallons (ASME only)  
208 V or 240 V / 3 PH



Proven Performance

- Recovery rate - Up to 248 GPH at a 100 degree rise
- Up to 190° F maximum delivered temperature
- Ideal for general commercial use, or used as backup electric heat
- Long life tank design - proprietary steel formulation with high temperature glass lining to maximize corrosion resistance resulting in a superior tank design



Sustainability

- Offers 98% thermal efficiency
- Thick foam insulation for minimal standby heat loss
- Decarbonization qualification – reduced carbon footprint



Easy Installation & Service

- Control box is located at the front of unit for easy wiring
  - Multiple knockout holes accommodate a variety of conduit sizes
- Exclusive!
  - System Sentinel™ provides a diagnostic panel with LEDs that correspond to the number, location and status of each element
  - Full-port, full-flow, brass drain valve for faster draining
- All models approved for installation on combustible flooring

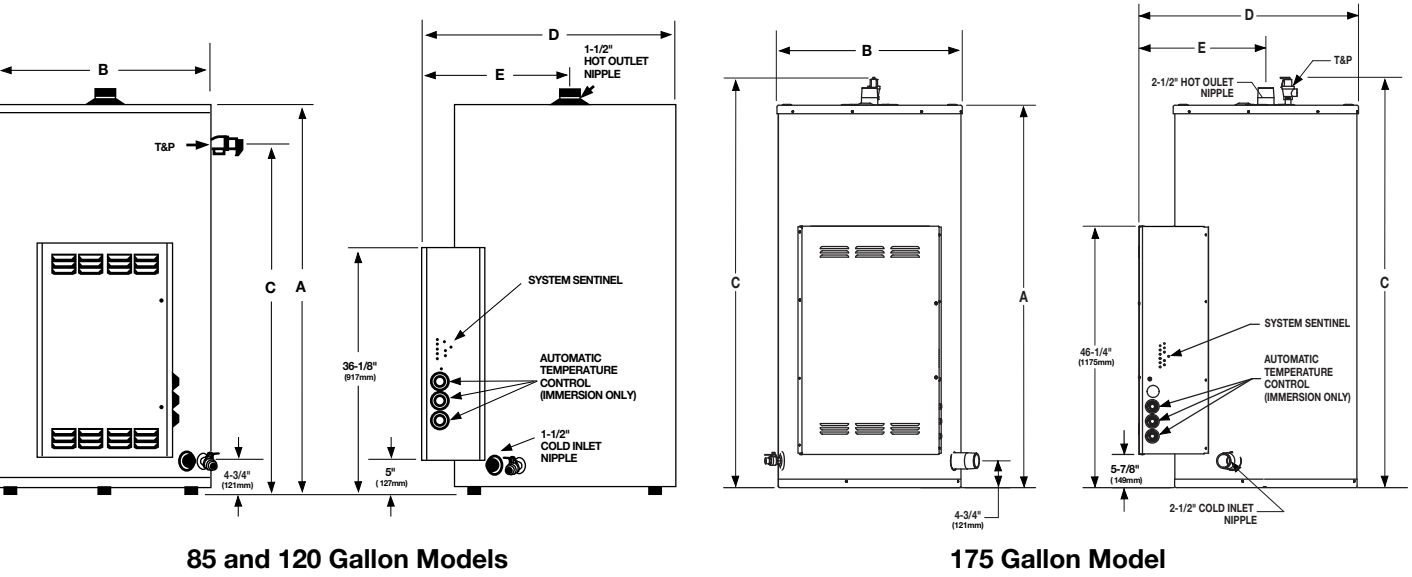
Applicable for domestic hot water heating in commercial kitchens, small businesses, hotels, and more.

Heavy Duty Electric Water Heaters  
Models E85(A), E120(A) & E175A

RECOVERY CAPACITIES RECOVERY IN U.S. GALLONS/HR. (GPH) & LITERS/HR. (LPH) AT VARIOUS TEMPERATURE RISES													
INPUT KW	EQUIVALENT BTU/H	UNITS	40°F (22°C)	50°F (28°C)	60°F (33°C)	70°F (39°C)	80°F (45°C)	90°F (50°C)	100°F (56°C)	110°F (61°C)	120°F (67°C)	130°F (72°C)	140°F (78°C)
15	51,183	GPH	155	124	103	89	78	69	62	56	52	48	44
		LPH	587	470	391	335	294	261	235	213	196	181	168
30	102,366	GPH	310	248	207	177	155	138	124	113	103	95	89
		LPH	1174	939	783	671	587	522	470	427	391	361	335
36	122,839	GPH	372	298	248	213	186	165	149	135	124	115	106
		LPH	1409	1127	939	805	705	626	564	512	470	434	403
45	153,549	GPH	465	372	310	266	233	207	186	169	155	143	133
		LPH	1761	1409	1174	1006	881	783	705	640	587	542	503
60*	204,723	GPH	620	496	414	354	310	276	248	226	206	190	178
		LPH	2347	1878	1567	1340	1173	1045	939	856	780	719	674

\*Not available with 85 and 120 Gallon Models

DIMENSIONAL INFORMATION ALL DIMENSIONS SHOWN IN ENGLISH AND METRIC								
MODEL NUMBER	UNITS	A	B	C	D	E	APPROX. SHIPPING WEIGHT	
							STANDARD	ASME
E85(A)	inches	57-11/16	28-1/4	49-1/2	34	20	350 lbs.	380 lbs.
	mm	1465	718	1258	864	508	159 kgs.	172 kgs.
E120(A)	inches	67-5/8	30-1/4	58-3/4	36	21	430 lbs.	460 lbs.
	mm	1718	768	1493	914	533	185 kgs.	209 kgs.
E175A	inches	69-1/2	32-1/4	72-1/2	38-1/2	22-1/4	–	700 lbs.
	mm	1765	832	1842	826	565	–	318 kgs.



Learn more about Heavy Duty Electric water heaters at [Raypak.com](http://Raypak.com)

HIGH EFFICIENCY



# Tanks

When it comes to designing safe and efficient systems, Raypak’s tanks have you covered.

## Stainless Steel, Stock, and Custom DHW Storage Tanks

- Used in conjunction with WH-model water heaters
- Provide enough capacity to handle short-term loads, resulting in extremely fast, flexible recovery
- Multiple insulation options to prevent standby heat loss and use in indoor or outdoor installations

Stainless steel storage tank: available in 110-gallon size, non-ASME only.

Stock tanks: 80- and 115-gallon sizes available as ASME or non-ASME; 175-, 235-, 335-, 499-, and 534-gallon sizes available as ASME only.

Custom tanks: Made-to-order tanks can be configured in numerous different ways in 2000+ gallon capacity, learn more at Raypak.com.



## Stainless Steel Indirect Storage Water Heater

- Using a coil heat exchanger inside the tank, heat and store domestic hot water with your hydronic boiler system
- Excellent thermal insulation reduces short-cycling and increases efficiency
- Stainless steel construction ensures corrosion-resistance for longer life

Available in 30-, 40-, 50-, 65-, 80-, and 115-gallon sizes (non-ASME only).

## ASME Hydronic Buffer Tanks

- A simple solution for low system water volume
- Applicable for:
  - Light loads – low water volume in the heating loop, or a load that is less than the minimum firing rate of the boiler, which can cause short-cycling
  - Rapid load changes – results from turning off or on a major zone within the heating system
  - Variable system flow – occurs when variable speed pumps are applied to the system, or when two-way valves are used to control flow to heating zones
  - Three-way valves – used in systems to accomplish outdoor reset
  - Process fluid heating – or other similar applications when the boiler circulating loop must be isolated from the fluid being heated



Horizontal models available in 40- and 60-gallon sizes.

Vertical models available in 80-, 115-, and 139-gallon sizes.

# Tanks

## Product/Tank Compatibility Reference Chart:

	ASME Hydronic Buffer Tanks	Stainless Steel Storage Tank	DHW Storage Tanks – Stock and Custom <sup>2</sup>	Stainless Steel Indirect Storage Water Heater
XVers	H	X	X	X
XVers L	H	X	X	X
XVers + KOR	H	X	X	X
XTherm	H	WH	WH	H
XFIIRE	H	WH	WH	H
XPak FT	H	X	X	H
MVB	H	WH	WH	H
Hi Delta	H	WH	WH	H
Delta Limited	H	WH	WH	H <sup>3</sup>
Hi Delta SS	H	WH	WH	H
Raytherm	H	WH	WH	H <sup>3</sup>

<sup>2</sup>H-models may be used in special high-temperature applications.

<sup>3</sup>Requires external controller.



Learn more about  
Tanks at Raypak.com

# PROFESSIONAL POOL & SPA HEATER

The best heater for tough coastal weather conditions where salty air challenges durability.

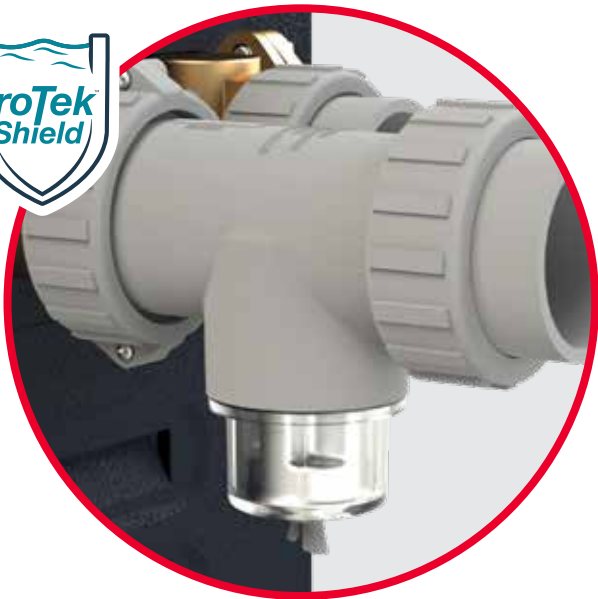
266 MBTUH - 399 MBTUH

**P** 82% Efficiency



### Maximum Durability

- Durable indoor/outdoor jacket with stainless steel finish withstands harsh coastal weather conditions
- Outdoor protective bezel protects digital controls from weather
- Cupronickel fin-tube heat exchanger and ASME bronze headers provide the strength needed to meet commercial code requirements



### Reliable Performance

- Self-adjusting burner compensates for gas pressure fluctuations, ensuring that the heater will always burn clean and safe
- Factory-installed flow switch eliminates pressure switch issues from elevated pools



### Built-In Protection with ProTek Shield

- Equipped with ProTek Shield: a cutting-edge module that protects the heat exchanger and extends the life of the unit
- Innovative, patent-pending technology engineered to take the brunt of the corrosion that naturally occurs over time from chlorine or salt water



### Digital Controls

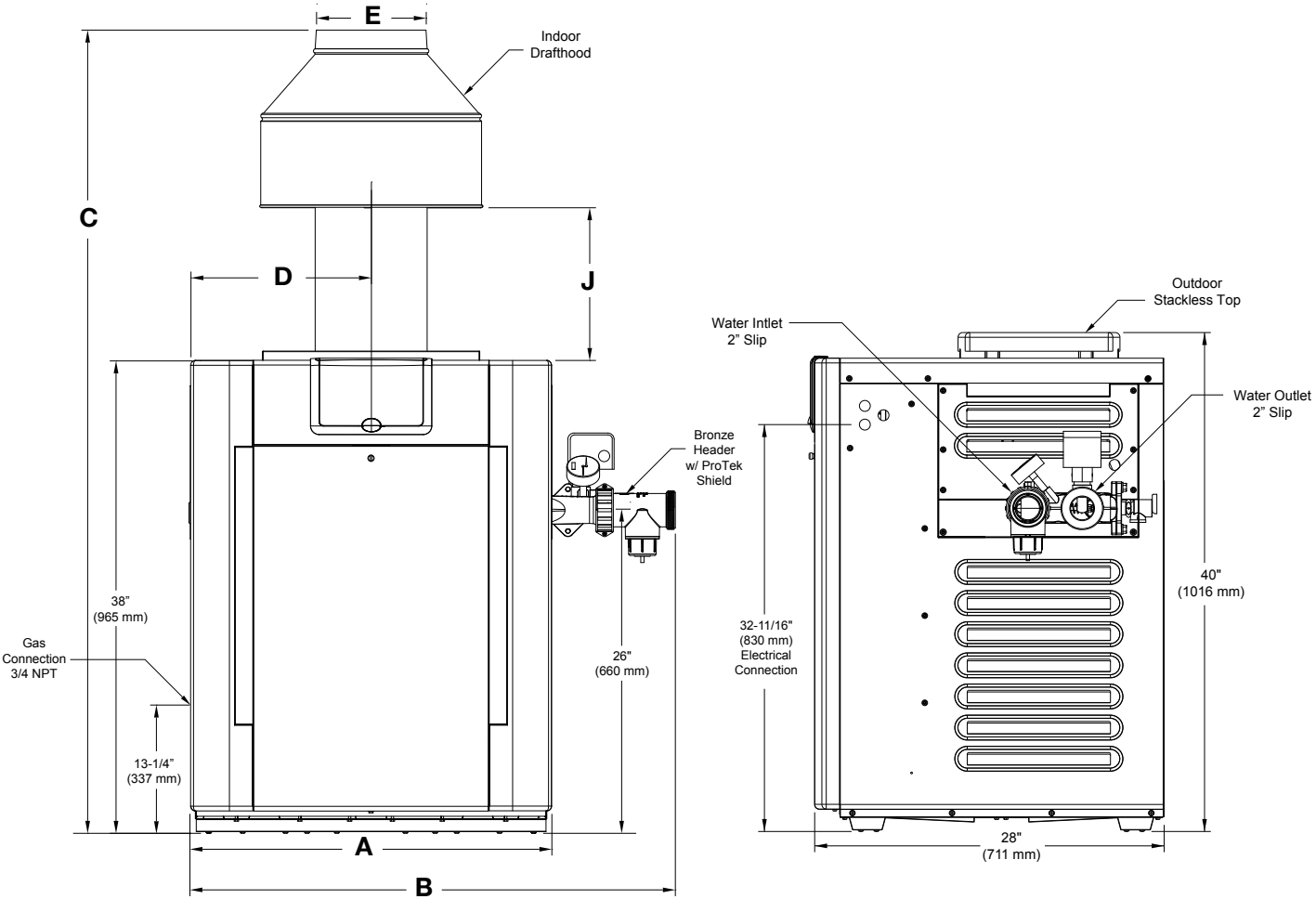
- Intelligent control system can easily be tied into an existing remote system
- Microprocessor-controlled thermostat for setting the perfect pool or spa temperature

### Optional Features

- ☒ Indoor draft diverter
- ☒ PoolStat cover/lock kit
- ☒ Restraint bracket (Florida code requirement)



## Professional Pool & Spa Heater Models 268A & 408A



Model	MBTUH (kWh)	Dimensions in. (mm)					
	Cupronickel Input	A Cabinet Width	B	C Indoor	D	E Flue ø	J Minimum
268A	266 (78)	23 (584)	32-7/8 (835)	62 (1575)	11-1/2 (292)	7 (178)	11 (279)
408A	399 (117)	29 (737)	38-7/8 (987)	64-9/16 (1640)	14-1/2 (368)	9 (229)	12-1/8 (308)

Designation for a Professional heater using propane gas is "EP"; a Professional heater using natural gas is "EN".  
Prefix "B" is for bronze (ASME) headers.  
Suffix "X" is for cupronickel tubing  
Example: B-R408A-EN-X = Bronze headers, 408 model size, digital, natural gas, cupronickel  
Reduce input 4% for each 1000 feet above sea level when installed above 2000 feet elevation.  
Heater can be installed directly on a combustible surface.

Applicable for commercial pool & spa heating in condos, gyms, hotels, schools, and more.



Learn more about  
Professional Pool & Spa Heaters  
at [Raypak.com](http://Raypak.com)

# PROFESSIONAL HEAT PUMP

Professional grade performance, built to last.



140 MBTUH - 170 MBTUH

**P** 6.1 ~ 5.8 C.O.P. (80,80,80)<sup>4</sup>

133 MBTUH - 155 MBTUH

**P** 5.8 ~ 5.3 C.O.P. (80,63,80)<sup>4</sup>



### Built for Durability

- Spiral titanium tube heat exchanger provides a corrosion-free waterway that can withstand harsh pool chemistry
- 304 stainless steel cabinet withstands tough coastal climates
- Reliable scroll compressors operate quietly and perform better with time



### Maximum Performance

- Specially designed swept wing fan blades operate efficiently and quietly
- Cools down pool water during hot summer months with a unique reversing valve on heat-cool units
- Factory-installed flow switch eliminates pressure switch issues from elevated pools
- Energy efficient: heat pumps operate at 5 to 6 times the efficiency of standard gas heaters
- Reduces greenhouse gas emissions while increasing cost savings



### Easy-to-Use Controls

- Intelligent control system with full diagnostics reporting that can easily be tied into an existing remote system
- Microprocessor-controlled thermostat for setting the perfect pool or spa temperature

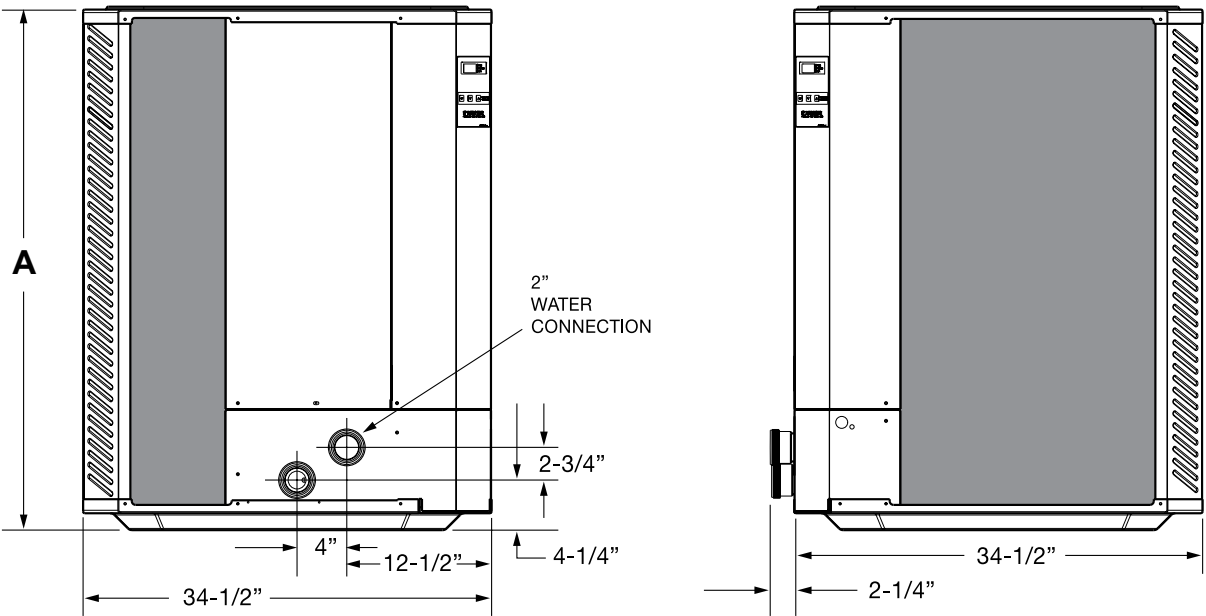
Applicable for commercial pool & spa heating in hotels, schools, parks, and community pools.



Learn more about Professional Heat Pump pool heaters at [Raypak.com](http://Raypak.com)

<sup>4</sup>Tested to AHRI 1160. All Models comply with Florida 4.0 minimum C.O.P. requirements.

## Professional Heat Pump Models 9350 & 10353



Model	Dimensions (in.)			
	A Height	Width	Depth	Water Conn.
9350	41-3/4	34-1/2	36-3/4	2
10353	49-3/4			

MODEL	PS9350ti-E-HC	PS10353ti-E-HC	PS10354ti-E-HC
Heat BTUH Output	140,000/133,000	170,000/155,000	170,000/155,000
AHRI 1160 (80,80,80)*	AHRI 1160 (80,63,80)*		
High Ambient C.O.P.	6.1/5.8	5.8/5.3	5.8/5.3
Low Ambient C.O.P.	4.1	4.0	4.0
Compressor	Scroll	Scroll	Scroll
Refrigerant	R-410A	R-410A	R-410A
Voltage	208/230V-1Ph-60Hz	208/230V-3Ph-60Hz	460V-3Ph-60Hz
Minimum Circuit Ampacity	42	42	26
Maximum Breaker Size (Amps)	60	70	40
Electrical Input (kw)	6.7	8.6	8.6
Heat Exchanger	Titanium	Titanium	Titanium
Water Flow (gpm)	30-60	30-60	30-60
Shipping Weight (lbs.)	363	570	570

\*Tested to AHRI 1160 All models comply with Florida 4.0 minimum C.O.P. requirement.

PROFESSIONAL SERIES



# PROFESSIONAL X94

High-efficiency pool and spa heater designed for durability.



399 MBTUH  
P 94% Efficiency



### Maximum Durability

- Stainless steel cabinet easily withstands tough coastal weather conditions where salty air presents a challenge
- Stainless steel marine-grade heat exchanger provides a corrosion-free waterway that can withstand exposure to chlorine and salt water



### Small Footprint

- Designed with multiple unit installations in mind – the perfect choice for space-saving installations
- All connections (except combustion air) are located on the rear of the unit
- Unique angled front control panel allows unobstructed access to controls when units are installed side by side



### Installation Flexibility

- Multi-port plumbing options with simple 2" CPVC slip connections for installation versatility
- Direct vent capable
- Multiple vent material options: PVC, CPVC, polypropylene, or stainless steel



### Easy to Use Controls

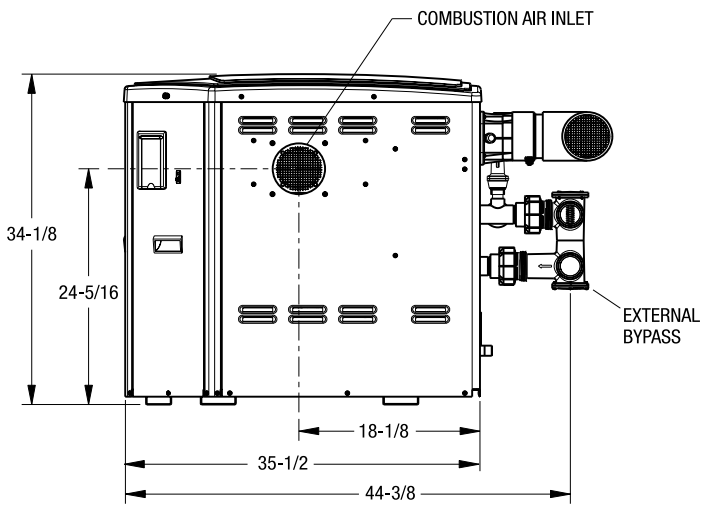
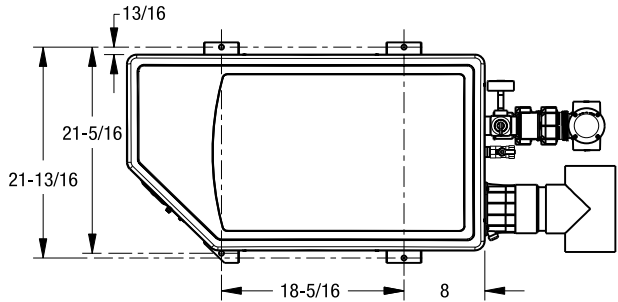
- Intelligent control system can easily be tied into an existing remote system
- On-board diagnostic controls for simple and straightforward troubleshooting
- Microprocessor-controlled thermostat for setting the perfect pool or spa temperature

Applicable for commercial pool & spa heating in apartments, condos, hotels, and more.

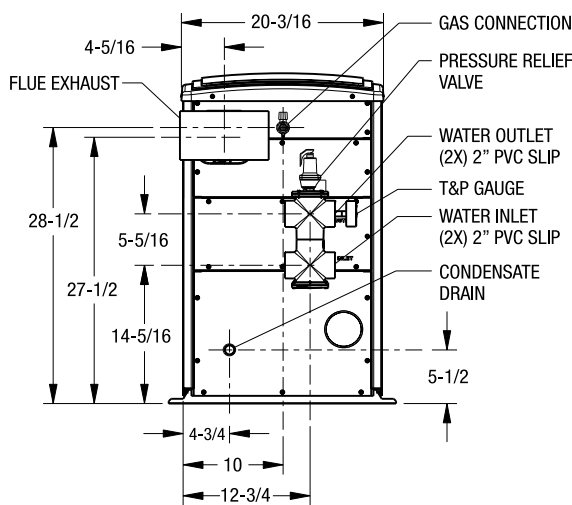


Learn more about Professional X94 pool & spa heaters at [Raypak.com](http://Raypak.com)

## Professional X94 Model S-R410



LEFT SIDE



REAR

Heater Model	MBTUH Input	(B) Flue Diameter	(C) Air Inlet	Gas Connection	Water Connection	Minimum Flow (gpm)	Maximum Flow (gpm)
S-R410	399.0	4"	4"	3/4"	2"	40	125

Designation for a Professional heater using propane gas is "EP"; a Professional heater using natural gas is "EN". Prefix "S" is for stainless steel heat exchanger and headers.  
Example: S-R410-EN = Stainless steel heat exchanger, 410 model size, digital, natural gas  
Heaters are rated for natural and propane gas up to 4,500 feet. For elevations over 4,500 feet consult the factory.  
Heater can be installed directly on a combustible surface.  
Flue gases must be properly vented with 4", 5" or 6" CAT IV venting, see I/O manual.  
Inlet air can be ducted with 4", 5" or 6" metal or PVC pipe-See I/O manual for complete venting details

# PROFESSIONAL INDIRECT™

Powered by XTherm®

The most durable high-efficiency pool heater available.



1 MMBTUH - 2 MMBTUH

P 96% Efficiency



Click icon or view standalone page to learn more.



## Maximum Performance

- Powered by Raypak's XTherm for high-efficiency heating with minimal maintenance
- Cupronickel or titanium heat exchanger for ultimate corrosion-resistance
- Indirect heat exchanger keeps the boiler safe from corrosive pool water by separating the boiler water from the pool water



Pre-plumbed boiler loop w/ system pump and expansion tank

Reversible PVC venting

Condensate treatment kit

Cupronickel or titanium indirect heat exchanger



## Easy Installation

- Delivered as a factory-built skid system to save you time and money
- Skid can be separated into two pieces for easy transport and installation
- Engineered boiler pumps ensure proper delta T for simple installation – just hook up water, gas, and electrical
- Factory-mounted condensate treatment kit to raise pH for safe drainage at no additional cost



## Intelligent Controls

- VERSA IC controls with LCD touchscreen display
- Raymote access
- Cascade up to 8 boilers in parallel or sequential modulation modes for precise control and system optimization

## Optional Features

- ☒ System flow switch
- ☒ Flange kit, CPVC

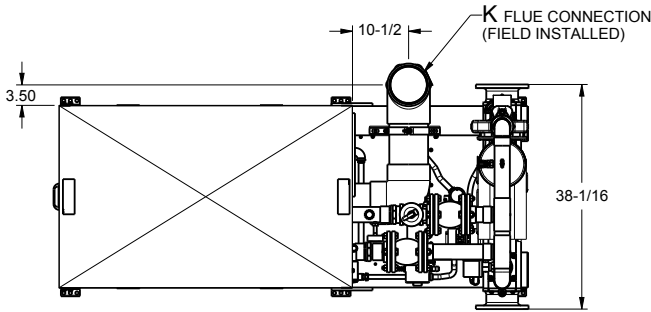
Applicable for heavy commercial usage, such as competition pools.



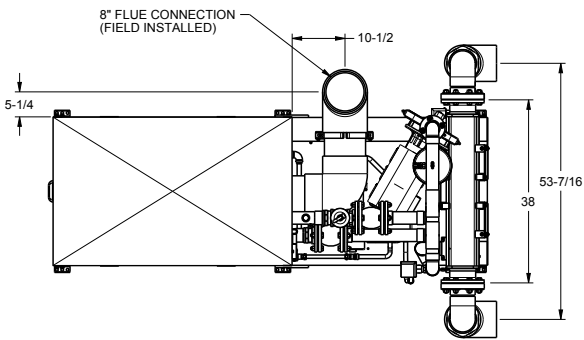
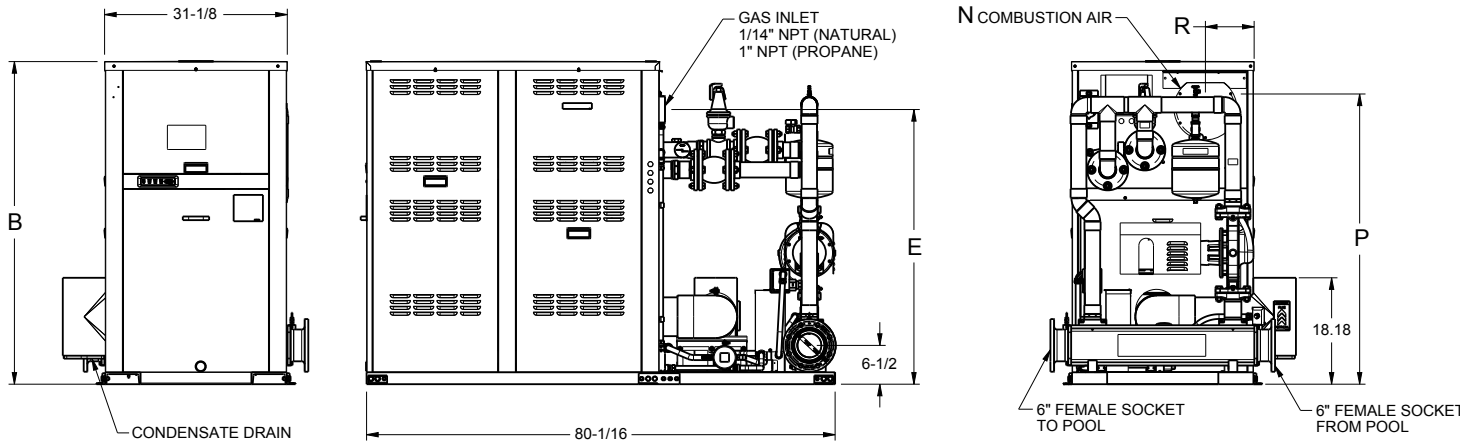
Learn more about Professional Indirect pool heaters at [Raypak.com](http://Raypak.com)

powered by **XTherm**  
ULTRA HIGH EFFICIENCY

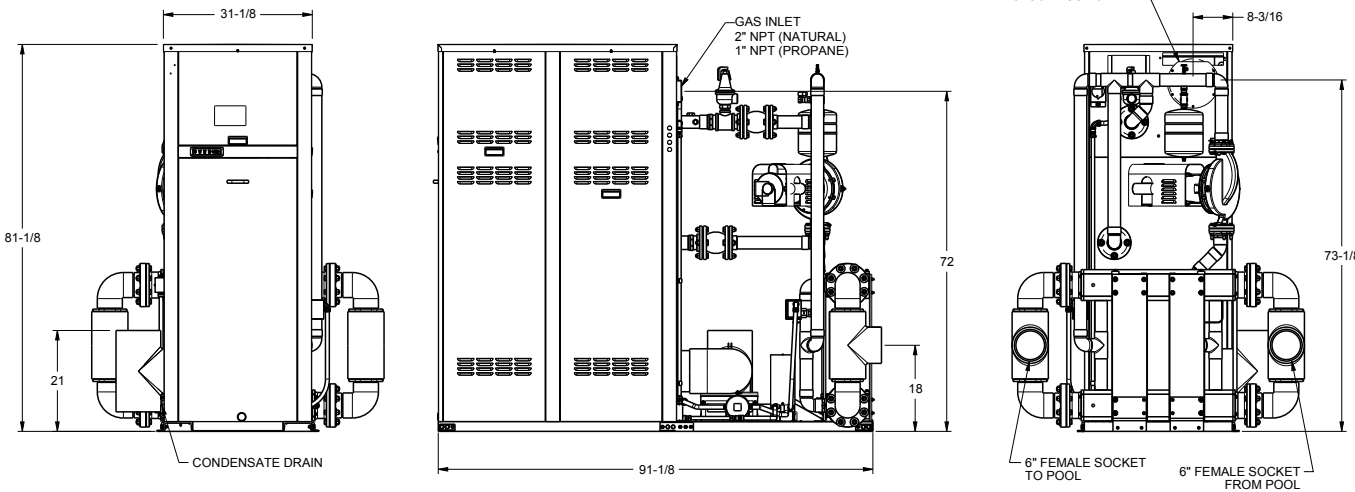
Professional Indirect  
Models 1005A - 2005A



Model (H7-)	MBTUH		Dimensions (in)						Ship Weight (Lbs.)
	In	Out	B Height	E	K Flue ø	N C/A ø	P	R	
1005A	999	969	55-1/4	47	6	6	47-1/8	8-5/16	1343
1505A	1500	1455	67-1/8	59	8	8	59-1/8	8-3/16	1448



Model (H7-)	MBTUH		Ship Weight (Lbs.)
	In	Out	
2005A	1999	1939	1930



PROFESSIONAL SERIES

# ASME Digital

Modern pool & spa heater designed for efficiency, convenience, and versatility.

199 MBTUH - 399 MBTUH

**P** 82% Efficiency



### Maximum Durability

- Low-profile design and corrosion-resistant galvanized metal cabinet provides maximum durability for reliable year-round pool heating
- Copper fin-tube heat exchanger and bronze ASME headers provide the strength needed to meet commercial code requirements



### Reliable Performance

- Self-adjusting burner compensates for gas pressure fluctuations, ensuring that the heater will always burn clean and safe
- Innovative technology and flexible installation solutions for reliable heating in any space
- Available as Low NOx



### Built-In Protection with ProTek Shield

- Equipped with ProTek Shield: a cutting-edge module that protects the heat exchanger and extends the life of the unit
- Innovative, patent-pending technology engineered to take the brunt of the corrosion that naturally occurs over time from chlorine or salt water



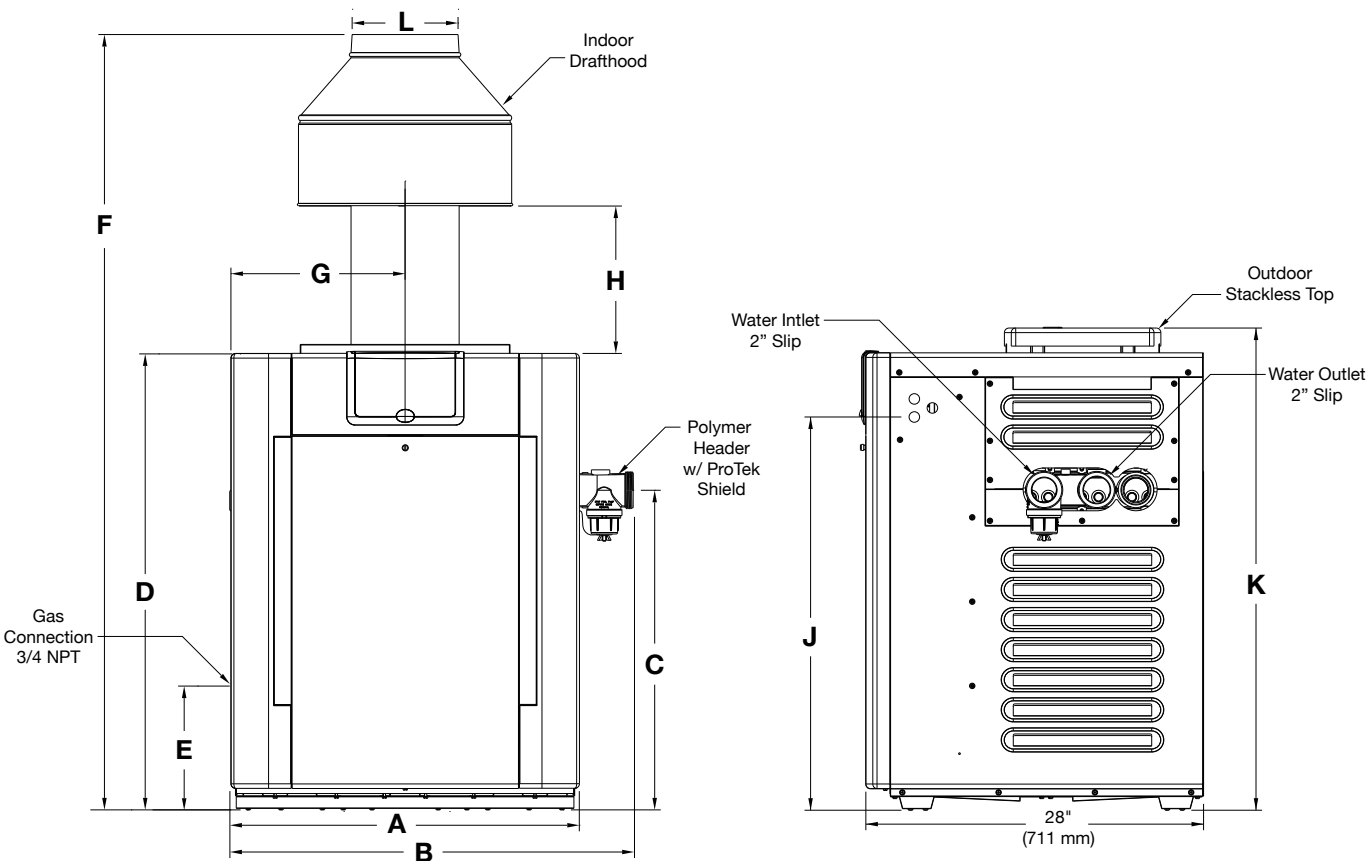
### Digital Controls

- Intelligent control system can easily be tied into an existing remote system
- Microprocessor-controlled thermostat for setting the perfect pool or spa temperature

### Optional Features

- ☒ Flow switch
- ☒ High wind top (outdoor)
- ☒ High wind stack (outdoor)
- ☒ PoolStat cover/lock kit
- ☒ Restraint bracket (Florida code requirement)
- ☒ Available as Low NOx

## ASME Digital Pool & Spa Heater Models 206A-407A



	Model	MBTUH (kWh)		Dimensions in. (mm)										
		Copper Input	Cupro-nickel Input	A Cabinet Width	B w/ Bronze Headers	C w/ Bronze Headers	D Cabinet Height	E	F	G	H	J	K	L Flue ø
Atmospheric	206A	200 (59)	180 (53)	20 (508)	29-7/8 (758)	25-15/16 (660)	38 (965)	13-1/4 (337)	61-5/8 (1565)	10 (254)	11-3/4 (298)	32-11/16 (830)	40 (1016)	6 (152)
	266A	266 (78)	240 (70)	23 (584)	32-7/8 (835)	25-15/16 (660)	38 (965)	13-1/4 (337)	62 (1575)	11-1/2 (292)	11 (279)	32-11/16 (830)	40 (1016)	7 (178)
	336A	333 (98)	300 (88)	26 (660)	35-7/8 (911)	25-15/16 (660)	38 (965)	13-1/4 (337)	63 (1600)	13 (330)	10-5/8 (270)	32-11/16 (830)	40 (1016)	8 (203)
	406A	399 (117)	360 (106)	29 (737)	38-7/8 (987)	25-15/16 (660)	38 (965)	13-1/4 (337)	64-9/16 (1640)	14-1/2 (368)	12-1/8 (308)	32-11/16 (830)	40 (1016)	9 (229)
Low NO <sub>x</sub>	207A	200 (59)	N/A	20 (508)	29-7/8 (758)	19-13/16 (503)	31-13/16 (792)	7-3/4 (197)	55-5/8 (1413)	10 (254)	11-3/4 (298)	26-1/2 (673)	34 (867)	6 (152)
	267A	266 (78)	N/A	23 (584)	32-7/8 (835)	19-13/16 (503)	31-13/16 (792)	7-3/4 (197)	56 (1422)	11-1/2 (292)	11 (279)	26-1/2 (673)	34 (867)	7 (178)
	337A	333 (98)	N/A	26 (660)	35-7/8 (911)	19-13/16 (503)	31-13/16 (792)	7-3/4 (197)	57 (1448)	13 (330)	10-5/8 (270)	26-1/2 (673)	34 (867)	8 (203)
	407A	399 (117)	N/A	29 (737)	38-7/8 (987)	19-13/16 (503)	31-13/16 (792)	7-3/4 (197)	58-1/2 (1486)	14-1/2 (368)	12-1/2 (318)	26-1/2 (673)	34 (867)	9 (229)

Applicable for commercial pool & spa heating in hotels, apartments, gyms, and more.

Learn more about ASME Digital pool heaters at Raypak.com

ASME POOL & SPA



# Indirect Heat Exchanger

Heat your pool and spa with ease.

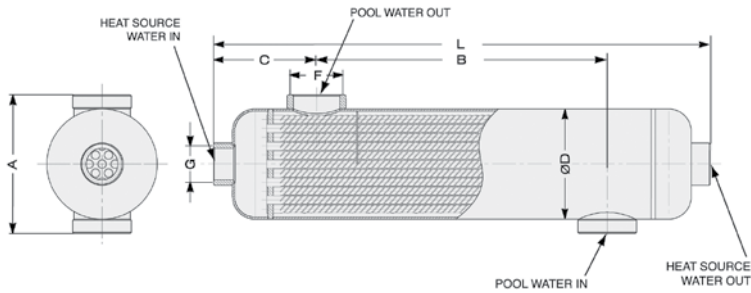
## 45 MBTUH - 495 MBTUH

Our titanium (B TI) line of pool heaters is widely used in industrial saltwater environments due to its unsurpassed corrosion resistance. Available for the most demanding of applications, from high chlorination to high salt content.

- Choice of two materials: special treated 316L stainless steel or titanium for high chlorine and salt pools
- Efficient design for high flows with low pressure drops
- Available in a wide range of capacities, suitable for heating whirlpools and hot tubs all the way up to large Olympic-size facilities
- Compact structural design allows for a small installed footprint and easier piping system design
- Transfer heat to your pool or spa without compromising water chemistry or the boiler heat exchanger – perfect for salt-water environments
- Compatible with any of our hydronic boilers

Part Number		Nominal Capacity* BTU/hour	Dimensions (inches)							
SS316L	B TI Titanium		A	B	C	Pool Conn. NPT F	Boiler Conn. NPT G	Length L	Dia. ø D	Heat Transfer Area (sq ft)
013476		45,000	4-3/16	4-3/8	3-1/16	1	3/4	10-7/16	3-1/8	1.62
013477		75,000	4-3/16	6-7/8	3-5/16	1-1/2	3/4	13-9/16	3-1/8	2.64
013478		125,000	4-3/16	8-7/8	3-5/16	1-1/2	3/4	15-1/2	3-1/8	3.64
013479		185,000	5	7-5/8	3-3/8	1-1/2	1	14-3/8	4	4.70
013480		245,000	5	12-11/16	3-3/8	1-1/2	1	19-1/2	4	6.80
013481		305,000	5	17-3/8	3-3/8	1-1/2	1	24-3/16	4	9.00
013482		495,000	5-1/16	34-13/16	3-5/8	2	1	42-1/16	4	16.80
013483		995,000	9-9/16	26-5/8	4-5/16	2	2	35-3/16	5-1/2	21.50
	018306	185,000	5-5/8	7-11/16	4-1/4	1-1/2	1-1/4	16-1/8	4-1/16	4.70
	018307	305,000	5-5/8	17-1/2	4-1/4	1-1/2	1-1/4	25-15/16	4-1/16	9.00
	018308	495,000	5-5/8	35-5/16	4-1/4	1-1/2	1-1/4	43-3/4	4-1/16	16.80

\* Nominal values are based on 140 °F temperature differential between incoming heating and heated water.



Applicable for low-temperature pool & spa heating when used with a hydronic boiler.

Learn more about Indirect Heat Exchangers at [Raypak.com](http://Raypak.com)

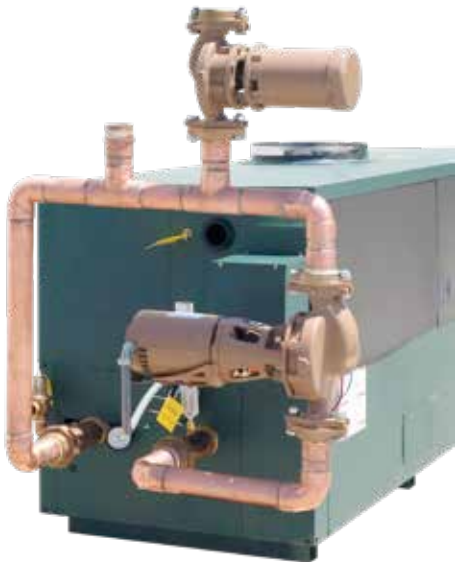
# Cold Water Protection

Continuously monitors and adjusts inlet water temperature to prevent condensation.

## Cold Water Start (CWS)

- Protects against harmful condensation caused by frequent, extended cold water start-ups
- Uses a three-way actuating valve to adjust the inlet water temperature during start-up when the system return water temperature is too low
- Available for single or multiple boiler systems (up to 4 boilers)<sup>1</sup>

Applicable for commercial hydronic heating in office buildings, factories, warehouses, and more.



## Cold Water Run (CWR)

- Protects against harmful condensation caused when return water temperatures are always, or often, below the acceptable minimum
- Uses a variable-speed injector pump to control the heater loop temperature, which helps regulate the minimum inlet water temperature regardless of system temperature

Applicable for water heating for pools, low temperature industrial processes, convalescent hospital domestic water, and more.

Learn more at [Raypak.com](http://Raypak.com)

<sup>1</sup>Not approved for use on domestic hot water or pool systems.



# VERSA IC®

Get more out of your boilers and water heaters.



## Built-In Intelligence

- Modulating temperature control, safety limits, and ignition programming combined into one user-friendly integrated control platform
- Self-learning features prevent equipment damage
- Easy to set up, understand, and use – as close to plug and play as possible
- Remotely accessible through Raymote for instant visibility to system vitals



## Intuitive Diagnostics

- High-definition touchscreen with Glove Sense™ technology and LCD display with touchpad make it easy to understand, navigate, and diagnose units
- Touchscreen features comprehensive 3D graphics with fault location
- Access crucial product information through the touchscreen display's built-in document viewer



## Communication Flexibility

- Communicate directly with VERSA IC through Building Management Systems (BMS) and/or the Raymote platform
- Monitor and control via standard, built in Modbus RTU port through any of Raypak's BMS protocol converters



## Cascade Up to 8 Units

- VERSA IC universal controller enables versatile system design to provide maximum performance
- Cascade up to 8 units in parallel or sequential modulation modes with cascade interstage delay settings<sup>1</sup>

### Available on:

- XVers Powered by KÖR
- XVers
- XVers L
- XFIIRE
- XTherm
- MVB
- XPak FT
- Hi Delta



Learn more about  
**VERSA IC** at  
**Raypak.com**

<sup>1</sup>Parallel or sequential modulation modes only available for H models.

# VERSA IC®



## Uptime Dependability

Raypak's VERSA IC reduces downtime through many system safeties and sensors that continuously monitor the health of the unit and its environment:

- Freeze protection
- Delta T and water flow sensor (XVers)
- Cold Water Protection built-in (user selectable for pump or motorized valve)
- Up to 8 sensors:
  - Inlet sensor
  - Outlet sensor
  - System sensor
  - DHW indirect sensor
  - Indirect supply/pool sensor
  - Vent temperature sensor
  - Spare sensor point for user optional BMS use
  - Outdoor reset sensor (optional)
- Burner status provided via dry contact or BMS protocol
- Alarm dry contact
  - Audible alarm optional
  - Selectable cascade alarm sharing



## Touchscreen Display

Up to 7 inch high definition touchscreen displays on XVers, XTherm and MVB. Up to 4.3 inch high definition touchscreen on XVers L and XFIIRE. Includes Glove Sense™ technology with liquid protection and rugged ballistic grade glass.



## LCD Display

3.5 inch LCD display with touch pad on all XPakFT and Hi Delta (C model sizes). High temperature capacity will stand up to harsh conditions.

# Raymote™

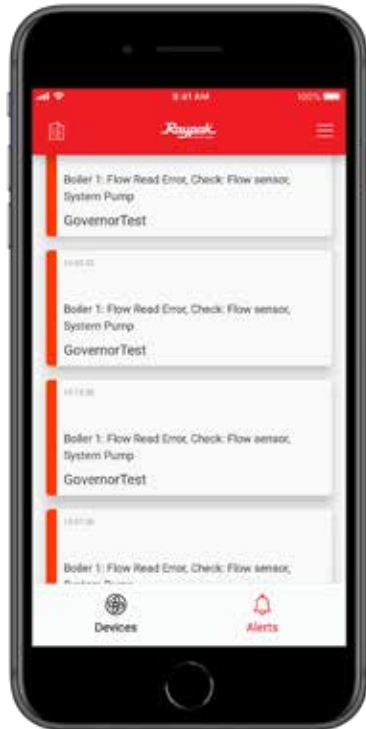
Save time and money with Raymote control, monitoring, and diagnostics.



## Simplified Troubleshooting

Raymote streamlines and simplifies troubleshooting to save you time and money. With instant visibility to system vitals and access to data logs, quickly and easily diagnose problems before traveling to the job site.

- Remotely adjust settings with help from the experts at Raypak
- View the entire fault log history and gain valuable insights to diagnose the source of a problem
- Arrive prepared with parts to service the unit quickly in one visit instead of two



## Startup and 90 Day Operation

Ensure systems are properly configured as operating conditions change from initial startup throughout the first 90 days of use. As additional equipment is activated, BMS parameters are changed, system sensors are placed, and the building heat load goes into full effect:

- Watch cascade sequences to ensure the building load is satisfied and run times are distributed evenly
- Ensure final BMS controls correspond to original system settings
- Safeguard unit operation against adverse conditions to eliminate warranty callbacks



## Peace of Mind

Know that your Raypak product is performing optimally by staying connected through the Raymote mobile app and web dashboard.

- Remotely monitor real-time vital information from anywhere, anytime
- Receive preventative maintenance reminders and instant service alerts
- Download reports to easily identify and anticipate maintenance needs
- Address potential problems before they become critical



# Raymote™ CONTROL



## Holistic Control & Diagnostics

Remotely optimize systems with access to comprehensive data logs and control settings.

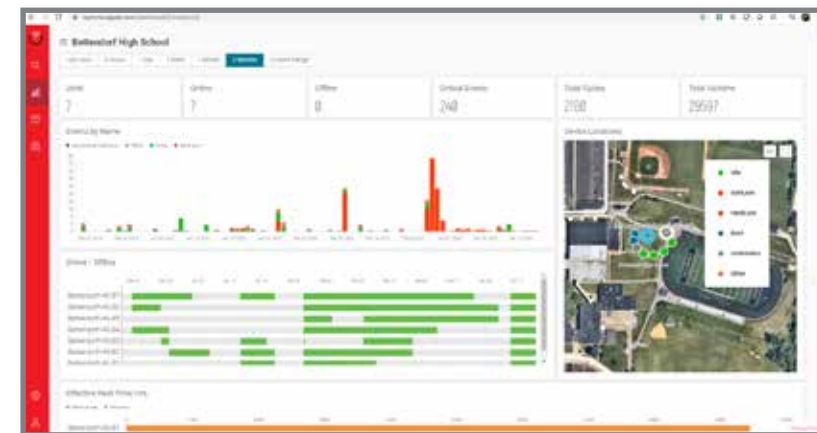
- Easily plot historical data to analyze performance
- Remotely adjust setpoints to fine-tune systems for maximum comfort and efficiency
- Diagnose problems with help from the experts at Raypak



## Stay Connected

Stay fully connected to all your Raypak systems through a single easy-to-use platform.

- View and manage systems at multiple sites
- Allow multiple users access for complete visibility and control



## Available on:

- XVers Powered by KÖR
- XVers
- XVers L
- XFIIRE
- XTherm
- MVB
- Professional Indirect



Web dashboard accessible online at [raymote.raypak.com](http://raymote.raypak.com)

Raymote mobile app available for download on the Apple® App Store® or Google Play™ store.



Learn more about  
**Raymote at**  
**Raypak.com**



# SureRack™

## XFIIRE™

### Features

- Double the heating capacity of your boiler or water heater without doubling your footprint with the XFIIRE™ SureRack™ Vertical Racking system
- Packaged disassembled for easy transportation and mobility at the job site
- Simple Assembly
- Heavy-Duty construction with powder coated finish
- Indoor/Outdoor

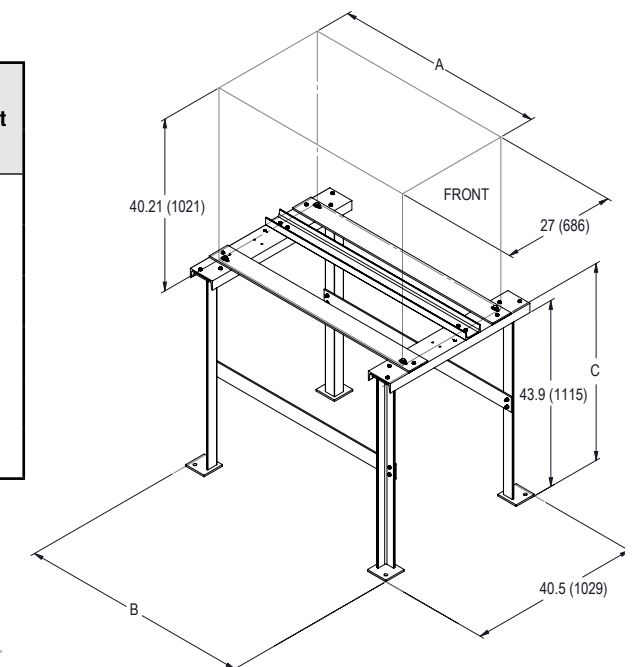
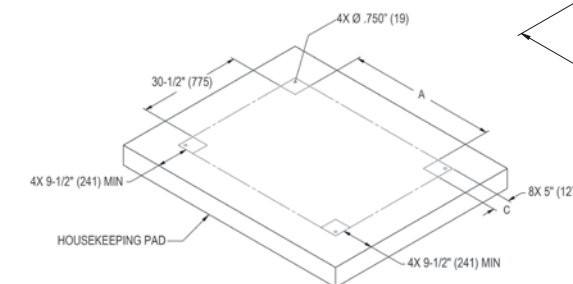


# SureRack™ FOR XFIIRE™ & Hi Delta®

## XFIIRE™

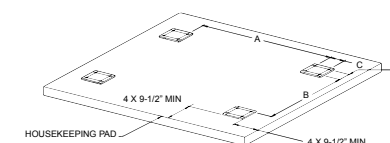
XFIIRE Model	Part No.	Approx. Weight Lbs. (Kg)	Dimensions in. (mm)			Approx Unit Weight Dry Lbs. (Kg)	Stacked Boiler Height in. (mm)
			A	B	C		
300	100-10000609	266 (1207)	36.83 (935)	41.3 (1049)	46.4 (1179)	371 (168)	86.61 (2200)
400						390 (177)	
500						457 (207)	
650	100-10000612	286 (1295)	45.25 (1149)	49.8 (1265)		499 (226)	
800						565 (256)	
1000	100-10000608	296 (1344)	50.0 (127)	54.5 (1384)			

XFIIRE Model	Anchoring Dimensions in. (mm)		
	A	B	C
300	27.8 (707)	30.5 (775)	5 (127)
400			
500			
650	39.7 (1008)		
800			
1000	44.5 (1130)		

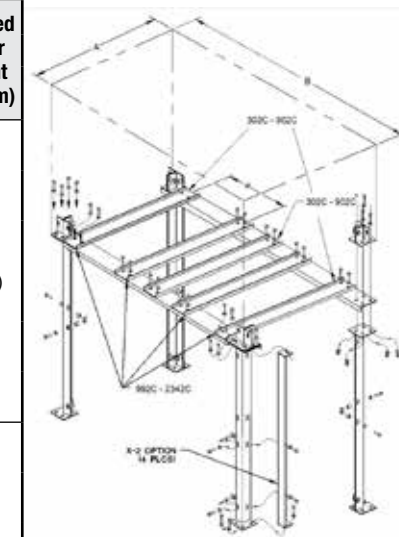


## Hi Delta®

Hi Delta Model	Anchoring Dimensions in. (mm)		
	A	B	C
302C	34.28 (870.9)	22.70 (577)	3.50 (89)
402C	41.28 (1048.7)		
502C	48.28 (1226.5)		
652C	58.78 (1493.2)		
752C	65.78 (1671)		
902C	76.28 (1937)	30.81 (782.3)	3.5 (88.9)
992C	55.62 (1412)		
1262C	66.94 (1700)		
1532C	78.28 (1988)		
1802C	89.6 (2276)		
2002C	100.97 (2565)		
2072C			
2342C	112.31 (2853)		



Hi Delta Model	Part No.	Weight Lbs. (Kg)	Dimensions in. (mm)				Cross Beams	Approx Unit Weight Dry Lbs.	Above-Grade Add-On (X-2)	Stacked Boiler Height in. (mm)
			A	B	C	W				
302C	6906	201 (91.2)	30 (762)	42.8 (1087)	37.75	CTR.	3	380	P/N 011919	72.25 (1835)
402C	6907	214 (97.1)		49.8 (1265)				445		
502C	6908	228 (103.4)		56.8 (1442)				545		
652C	6909	257 (116.6)		67.3 (1709)				590		
752C	6910	265 (120.2)		74.3 (1887)				675		
902C	6911	276 (125.2)	38 (965)	84.8 (2154)	45.94		4	74	P/N 011920	82.50 (2096)
992C	11563	340 (154.2)		64.12 (1629)				900		
1262C	11564	361 (163.7)		75.5 (1918)				1010		
1532C	11565	371 (168.3)		86.78 (2210)				1225		
1802C	11566	408 (185)		98.13 (2492)				1350		
2002C	11567	428 (194.1)		109.5 (2781)				1450		
2072C	11567	428 (194.1)		109.5 (2781)				1450		
2342C	11568	458 (207.7)		120.81 (3073)				1520		



## Hi Delta®

### Features

- Double the heating capacity of your boiler or water heater without doubling your footprint with the Hi Delta® SureRack™ Vertical Racking system
- Packaged disassembled for easy transportation and mobility at the job site
- Simple Assembly
- Heavy-Duty construction with powder coated finish
- Indoor/Outdoor

NOTE: The Hi-Delta SureRack is designed to connect to the lower unit to provide lateral bracing. Raypak cannot support using a SureRack as a platform to elevate an upper unit with no lower unit.

# WHY PARTNER WITH RAYPAK?

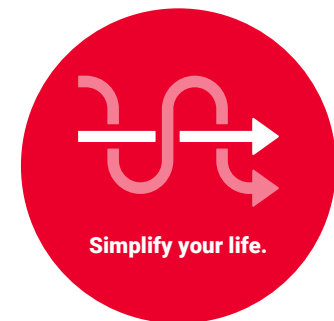
## XRAY Partner Automation Solution

Save time, increase sales.

### Remote Project Support

Raypak's XRAY is a proprietary cloud-based sales and order management system designed to streamline hot water and hydronic project management. XRAY will change the trajectory of your organization. With total communication being paramount in today's work environment, XRAY will provide an unparalleled customer experience at every level:

- Product Selection
- Documentation Support
- Quotation and Submittal Support
- Order Entry
- Production
- Shipping
- Parts Management



### Turnkey Solution

XRAY is designed to keep you in the know and keep your projects moving every step of the way. We are committed to our mission of being "easy to do business with" and providing turnkey solutions for our partners.

- Quickly select and configure the right product/systems for your projects
- Generate submittals, schedules, and budgetary pricing within minutes

### Automate Design Process

- Centralized, overhead view of customers and projects
- Organize and maximize your team's productivity
- Get more data on sales trends to drive growth



Access XRAY at  
[XRay.Raypak.com](http://XRay.Raypak.com)

Raypak offers so much more than products. Our global presence, expert training courses, and remote technical support make doing business with Raypak easier than ever.



### Expert Trainings

- In-person field trainings available at our Innovation Learning Centers (ILC) or local training events range from basic product introductions to advanced controls integration
- Access online trainings from the comfort of your home and earn Raypak certifications on completed courses
- Learn at your own pace and access classes you may have missed or want to re-watch through the [Raypak training library](#)

### Expert Service

- Raypak products are stocked and ready to ship from multiple regional warehouse locations across the country
- Quickly quote products, place orders, and view available inventory with XRay, Raypak's partner automation solution
- Our innovative solutions are engineered to perform, built to last, and delivered when and where you need them



### Expert Support

- We are industry leaders with over 70 years of experience
- Find Raypak products in [BIMObject](#) and [MasterSpec](#) for access to free REVIT files and quick, easy product specification
- Access detailed manuals, submittals, specifications, quick start guides, and more in our comprehensive online [Document Library](#)
- Our team of product experts are just a phone call away to help answer your toughest technical questions, and we have a wide service network to offer product support in the field

Learn more at  
[Raypak.com](http://Raypak.com)



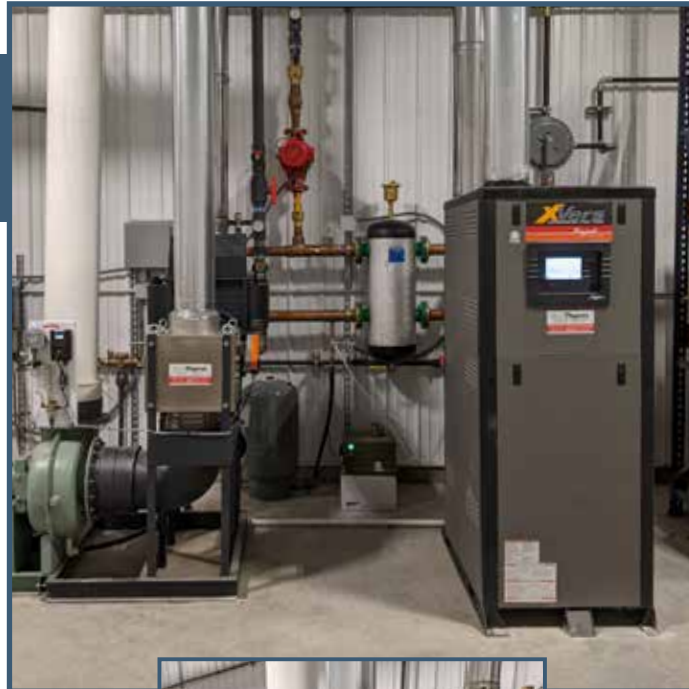
# RAYPAK PRODUCTS IN ACTION

## CO<sub>2</sub> CAPTURE FROM CALIFORNIA TO JAPAN WITH RAYPAK® BOILERS

**BioTherm® makes CO<sub>2</sub> conditions right for their customers' indoor growing with help from Raypak XVers® Condensing Boilers**

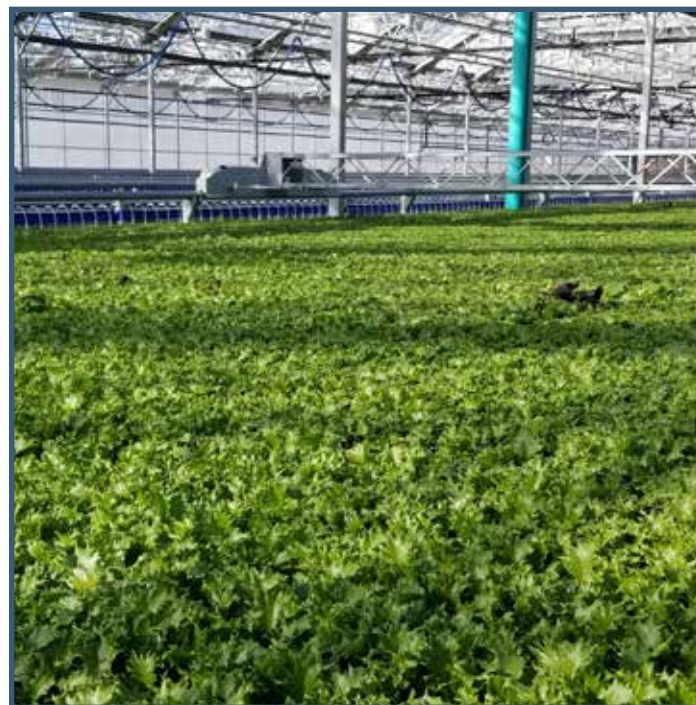
Indoor and greenhouse farming are growing industries and will continue on this path as consumers look for produce grown closer to where it is sold. But no matter where they are, all plants need just the right levels of light, temperature, moisture and air composition. California-based BioTherm, the exclusive dealer for Raypak boilers to the Controlled Environment Agriculture (CEA) industry, knew that with the right condensing boiler system in place, BioTherm CO<sub>2</sub> Systems can easily be integrated for more customers to achieve the perfect CO<sub>2</sub> levels in indoor and greenhouse operations.

Learn more about how BioTherm is leveraging the Raypak XVers® Family of condensing boilers to impact the CEA industry at [Raypak.com](https://Raypak.com)



*"The other options they (cultivators) have are to have a gas provider bring out a giant tank they keep filled to emit the CO<sub>2</sub>...with our [XVers Condensing Boiler CO<sub>2</sub>] system, they make it on-site and it burns clean. It doesn't take much to get them to the desired set point. It's a much more economical way to do it and easier logistically without having to get it delivered. It's dry and clean and gives them a big benefit for their buck..."*

— Jim Rearden, President of BioTherm



## RAYPAK® BOILER BLOOMS WHERE IT IS PLANTED

**Raypak XVers® Powered by KÖR™ Boiler Helps Westland Floral**

A key component in growing flowers as well as Westland Floral has for over 40 years is having the right amount of hot water to supply their underbed radiant heat system. Westland Floral decided it was time to replace their large, outdated boiler system when it had reached the end of its useful life and they could no longer rely on it to keep up with their planting schedule. In consultation with Jeremy Scriven from Industrial Boiler Service, a long-time customer of Raypak® and a believer in new technology, Westland decided on a new Raypak XVers® Powered by KÖR™ Boiler with Raymote™ connectivity.

Learn more about how XVers Powered by KÖR is helping Westland Floral save space and energy at [Raypak.com](https://Raypak.com)



*"The (XVers + KÖR) boiler looks great, it is definitely a huge step up in efficiency and takes up much less space than the old unit... The space saving and improvements in energy usage alone make it a 'no-brainer.' I am also really impressed with how simple the interface is on the boiler...we often have employees walk by our boilers and with the large screen being readable from a great distance compared with our other units, it allows us to know what's going on with the boiler at a glance."*

— Conner Held, Operations Manager at Westland Floral Company, Inc.





# SUSTAINABILITY

As a member of the Rheem® family of brands, Raypak® is a big part of Rheem Manufacturing's commitment to taking a greater degree of responsibility for future generations.

Raypak has been at the forefront of environmental efficiency and sustainability for over 70 years, leading the evolution of hot water as a top manufacturer of energy efficient boilers, water heaters and pool heaters. At Raypak, we demonstrate our commitment to sustainability throughout our company and our value chain, from innovative, sustainable product development to our proactive and responsible manufacturing processes that reduce environmental impact.

## By 2025, we are committed to:

- Achieving zero waste to landfill in our global manufacturing operations
- Launching a line of heating, cooling and water heating products that boast a 50% reduction in greenhouse gas (GHG) footprint
- Training 250,000 plumbers, contractors and key influencers on sustainable products, sustainable installation, and recycling best practices



DEGREES OF INNOVATION

We are focused on innovating with intent, engineering solutions with lifetime sustainability in mind—from material selection to smart features to responsible recycling.



DEGREES OF EFFICIENCY

We strive for operational excellence, working smarter and more sustainably to consume fewer resources, generate less waste and ensure simpler, safer processes.



DEGREES OF LEADERSHIP

We hire and inspire our teams to be next-generation thinkers and responsible stewards of our industry, the greater community, and the environment.

# SUSTAINABILITY STANDOUTS



## Sustainability Standout Seal

While many Raypak products have sustainable features, certain products stand out as a cut above – and those products earn the Sustainability Standout™ Seal. It is given based on a number of internally designed factors relating to product attributes like energy efficiency, longevity, carbon reduction, and more. We have added this seal in places like product information pages, marketing and training materials – all to help professionals recommend responsible products and consumers make smart purchasing decisions.

## How The Seal Is Earned

To determine which products stand out among our sustainable offerings and have earned the right to bear the Sustainability Standout™ Seal, we created a proprietary point system. In our Sustainability Strategy Sessions during our product development process, we look at the Earth-friendly attributes of the product – such as efficiency, packaging, performance, features, and recyclability. We assign each sustainable attribute a point value and products that earn enough points bear the seal. Those that have not earned enough points may still be environmentally friendly, however, this seal is simply a way to make finding the best of the best easier.

## Sustainable Standouts

We are working to bring the Sustainability Standout™ Seal to all the products that qualify. Look for it on upcoming product pages, videos, and other marketing materials to help you identify the product solutions that have earned a closer look.

# CO<sub>2</sub> IMPACT INDICATOR



Choosing this product instead of a minimum efficiency alternative offsets CO<sub>2</sub> emissions equivalent to planting this number of trees over the product's lifetime.

\*Based on a typical 20-year product lifetime

## Making a Difference by Design

One of the key considerations in the development of any sustainable product is how much it reduces the emissions of CO<sub>2</sub>, a greenhouse gas, into the environment. Lowering our products' carbon footprint begins with the initial product design. Raypak products are designed from the beginning to be innovative and amongst the most efficient with minimal CO<sub>2</sub> impact.

## The CO<sub>2</sub> Impact Score

The reduced CO<sub>2</sub> impact of selecting a high efficiency Raypak product instead of a minimal efficiency alternative is reflected in the product's CO<sub>2</sub> impact score. This score provides a simple means of measuring the reduced CO<sub>2</sub> emissions compared with a minimal efficiency alternative. The CO<sub>2</sub> Impact Score is internally calculated based on a typical product lifetime and does not denote a third party certification/seal.

## How are Trees Related to CO<sub>2</sub>?

When trees grow, they convert CO<sub>2</sub> to carbohydrates (sugar). They do this by photosynthesis and this process forms the building blocks of the tree. Choosing a Raypak product instead of a minimum efficiency alternative offsets CO<sub>2</sub> emissions equivalent to planting the specified number of trees over the product's lifetime.

## The CO<sub>2</sub> Impact Tree Icon

Throughout this brochure you will see the CO<sub>2</sub> Impact Tree Icon displayed. It will highlight the environmental benefit of choosing this high efficiency product saving you money, protecting natural resources, making your home a healthy place to live, and – perhaps most importantly – reducing your carbon footprint.

Max efficiency is assumed for all units at all times for all Treescore calculations. Total environment benefit numbers are achieved by multiplying benefit/yr with Heat-exchanger or Thermal-shock warranty to get total benefit over the course of life of the product. Values used for CO<sub>2</sub> emitted per million BTUs are 117lb for NAT GAS, 139lb for PROPANE. US electrical grid's average carbon footprint of 270lb/million BTUs is used as electricity carbon footprint. Runtime for units is assumed to be: Pool=1600hrs/year, Commercial=2000hrs/year. All products are compared to their min. efficiency counterparts based on application/use. (Example: HPPH is compared to NAT GAS Pool heater). For all calculations heaters with same BTU rating (heating capacity) are compared to baseline heaters with min. efficiency as per US regulatory authorities. Treescore is calculated based on lesser CO<sub>2</sub> emitted by our products vs CO<sub>2</sub> absorbed by trees. (CO<sub>2</sub> absorbed over 10 years by a new average seedling planted today is 132.27lb). Lesser CO<sub>2</sub> emitted calculations exclude CO<sub>2</sub> footprint of building and recycling the product. Environmental benefit is only applicable for the time for which the higher efficiency product is used by customer.

## NOTES

[illegible]

## NOTES

[illegible]



Learn more at [raypak.com](https://raypak.com)

2151 Eastman Avenue | Oxnard, CA 93030 | 805-278-5300

©2024 Raypak, Inc. RP-C-900-6 REV J Effective 12-05-24 Replaces 11-14-24