



HET ELONGATED FLOOR MOUNTED, ADA HEIGHT ECOVANTAGE® FLUSH VALVE TOILET SYSTEM Z5665-BWL1

TAG _____

ARCHITECTURAL & ENGINEERING SPECIFICATION

Z5665-BWL1

EcoVantage High Efficiency Toilet System

Vitreous China, 1.1 gpf [4.2 Lpf] or greater high efficiency, ADA, floor mounted, bottom outlet toilet with siphon jet flushing action and elongated front rim with 1-1/2" [39mm] top spud. This bowl is designed to perform to industry standards with as little as 1.1 gallons per flush.

Z5665-BWL1-AM

EcoVantage High Efficiency Toilet System

Vitreous China, 1.1 gpf [4.2 Lpf] or greater high efficiency, ADA, floor mounted, bottom outlet toilet with siphon jet flushing action, ZurnSHIELD™ ceramic glaze and elongated front rim with 1-1/2" [39mm] top spud. This bowl is designed to perform to industry standards with as little as 1.1 gallons per flush.

Z5666-BWL1

EcoVantage High Efficiency Toilet System

Vitreous China, 1.1 gpf [4.2 Lpf] or greater high efficiency, ADA, floor mounted, bottom outlet toilet with siphon jet flushing action, ZurnSHIELD™ ceramic glaze and elongated front rim with integral bedpan lugs, and 1-1/2" [39mm] top spud. This bowl is designed to perform to industry standards with as little as 1.1 gallons per flush.

PRODUCT FEATURES

Z5665 HET Series

- Zurn High Efficiency Toilets and paired performance flush valve systems are designed to exceed industry standards, while using as little as 1.1 gallons of water per flush
- Universal high efficiency toilet can be specified with 1.1 gpf [4.2 Lpf], 1.28 gpf [4.8 Lpf], 1.6 gpf [6.0 Lpf] or dual flush valves
- Vitreous china
- ADA height
- Elongated front rim
- 2-1/8" [54mm] fully glazed trapway
- High efficiency siphon jet flush action
- Shipping weight 65 lbs

COMPLIANCE AND CERTIFICATION:

- Complies with ASME A112.19.2 / CSA B45.1
- ADA Compliant



This product should be used with a WaterSense labeled counterpart with a compatible flush volume to ensure that the entire system meets the requirements for water efficiency and performance.

NOTE: To ensure system performance:
Minimum Running Water Pressure = 25 psi.



VARIANT OPTIONS

Z5665-BWL1

Z5665 Series top spud toilet

Z5665-BWL1-AM

Z5665 Series top spud toilet with ZurnSHIELD™ glaze

Z5666-BWL1

Z5665 Series top spud toilet with Top Spud Toilet with integral bedpan lugs and ZurnSHIELD™ glaze

RECOMMENDED TRIM

Z5955SS-EL

Elongated, standard white, open front toilet seat less cover with stainless steel check hinge

Z5972-COMB

Closet bolt & wax ring kit

Z5665-BWL1 ZURN ONE SYSTEMS

Complete fixture package with bowl, flush valve, seat and trim

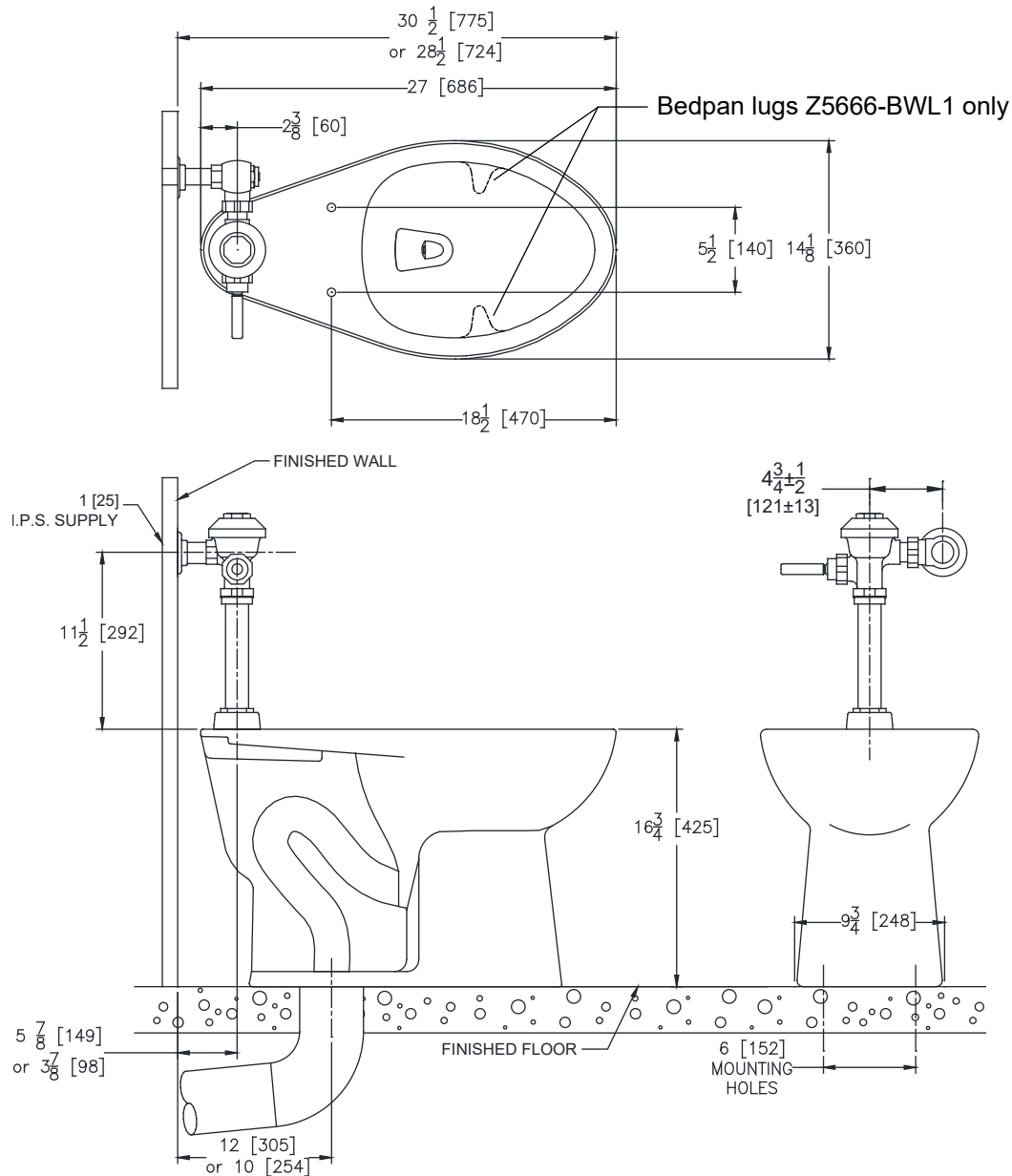
ITEM NUMBER	DESCRIPTION	FLUSH VOLUME GPF
Z.WC3.M	Manual Z6000AV-ONE system	1.1
Z.WC3.S	EZ Flush ZER6000AV-ONE-SM system	1.1
Z.WC3.S.TM	Top Mount Sensor ZER6000AV-ONE-TM system	1.1
Z.WC4.M	Manual Z6000AV-HET system	1.28
Z.WC4.S	EZ Flush ZER6000AV-HET-SM system	1.28
Z.WC4.S.TM	Top Mount Sensor ZER6000AV-HET-TM system	1.28

See Zurn One Systems for suggested packages.

ARCHITECTURAL & ENGINEERING APPROVAL

The information contained in this document is subject to change without notice.
Please contact Zurn for most up to date information.

Rough-in dimensions/Overview dimensions



NOTE: All dimensions are for reference only. Do not use for pre-plumbing.