



Server Version: V1.3.0.7
Probe Version: V1.0.6.0
Published: 2017/08/18

These release notes include important information about D-Link D-View 7 Network Management Software. Please verify that these release notes are correct for your products:

- If you plan to upgrade or install this new software release, please read [System Requirement](#) first to ensure the system you would like to install D-View 7 can fulfill the requirements and refer to the [Installation and Upgrade Instructions](#) for the correct upgrade procedures.
- For the detailed software version and support information, please refer to the [Revision History](#).

Related Documentation and Information:

- For more detailed information regarding this product, please refer to [Related Documentation](#).
- For the latest documentation, please visit D-View web site <http://dview.dlink.com/> and click on Resources > Documentations
- You can also download the latest software versions on D-View Web site <http://dview.dlink.com/> .

Content:

Revision History.....	3
System Requirement	3
Installation and Upgrade Instructions:.....	4
New Features	9
Problem Fixed.....	14
Known Issues.....	17
Related Documentation	17

Revision History

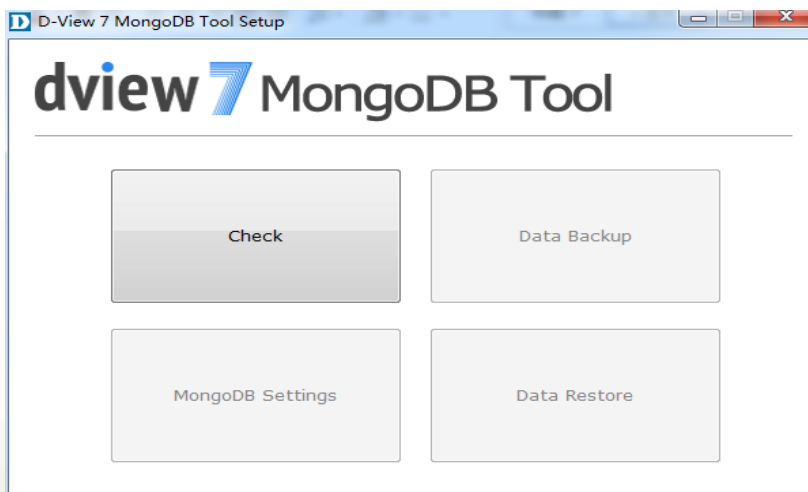
Software Version	Model	Release Date
Server: v1.3.0.7 Probe: v1.0.6.0	DV-700	2017/08/18
Server: v1.2.1.0 Probe: v1.0.4.3	DV-700	2016/08/05
Server: v1.0.2.4 Probe: v1.0.1.9	DV-700	2015/05/15

System Requirement

Applications	System Requirements
D-View Server	<ol style="list-style-type: none"> CPU : Dual Core 3.0GHz or above RAM : 8GB or above HD : 120GB or above (depends on the number of devices been managed) <ul style="list-style-type: none"> - C drive to install Core Server - D drive to install Mongo Database Operation System (OS), only supports 64-bit OS, English version. <ul style="list-style-type: none"> - Windows 7 64 Bits (Professional Edition or above) - Windows 8 64 Bits (Professional Edition or above) - Windows 8.1 64 Bits (Professional Edition or above) - Windows 10 64 Bits (Professional Edition or above) - Windows Server 2008R2 64 Bits (Standard Edition or above) - Windows Server 2012 64 Bits (Standard Edition or above)
D-View Probe	<ol style="list-style-type: none"> CPU : Single Core 2.0GHz or above RAM : 2GB or above Operation System (OS), supports both 32 or 64-bit OS, English version. <ul style="list-style-type: none"> - Windows XP 32 or 64 bits - Windows 7 32 or 64 bits - Windows 8 32 or 64 bits - Windows 8.1 32 or 64 bits - Windows 10 32 or 64 bits - Windows Server 2008 32 or 64 bits - Windows Server 2008 R2 64 bits - Windows Server 2012 64 bits
D-View Client	<ol style="list-style-type: none"> Browsers <ul style="list-style-type: none"> - Chrome - Firefox - IE 10 or above

Installation and Upgrade Instructions:

- 1 Visit D-View Web site <http://dview.dlink.com/> to get the latest software version.
- 2 D-View Server Installation or Upgrade:
Please refer to D-View 7 User Manual to install or upgrade your D-View 7; be sure to read through following notices before you start the installation/upgrade processes.
 - 2.1 If you install D-View 7 for the first time, please execute "D-View 7 1.3.0.7 Setup" file and follow the step by step procedures in the user manual.
 - 2.2 If you upgrade D-View 7 from version 1.0.2.4 to version 1.3.0.0,
 - **Step1 (MUST procedure!), upgrade MongoDB from version 2.6 to 3.2;** please download the tool from D-View Web site's Download page and follow section 3's guidance to update your MongoDB.
 - Step2, execute "D-View 7 Upgrade 1.3.0.7" file to upgrade D-View to version 1.3.0.7.
- 3 Mongo DB Upgrade Instruction:
 - 3.1 Please go to D-View Web site to download Mongo DB migration tool.
 - 3.2 Double click the "D-View 7 MongoDB Tool 1.0.0.2.exe" file and click Agree button when seeing announcement screen.
 - 3.3 Step 1, click Check button to check MongoDB status in your server.



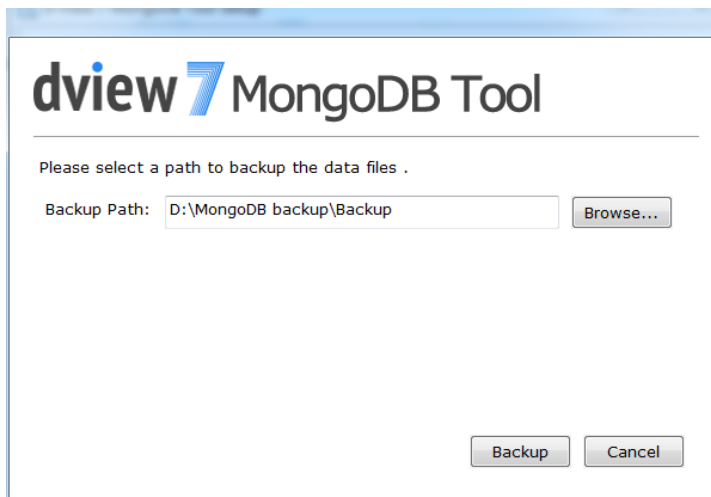
The result message could be one of following. Please follow system's suggestion for next step.

MongoDB installed situation	MongoDB service status	Check result
2.6.5	Be registered as	You have already installed both MongoDB 2.6

	windows service named as "MongoDB"	and 3.2 and MongoDB 2.6 is registered as a Windows service. You can use the "Database Backup" feature to back up the D-View 7 database and the "MongoDB Settings" feature to install, upgrade or register MongoDB 3.2.
2.6.5	Never be registered as windows service; No service named "MongoDB"	You have already installed MongoDB 2.6, but it has not been registered as a Windows service. You can use the "MongoDB Settings" feature to upgrade it to 3.2, register it as a Windows service, and then use the "Database Restore" feature to restore the backed up files to MongoDB 3.2.
3.2.6	Be registered as windows service named as "MongoDB"	You have already installed MongoDB 3.2 and registered it as a Windows service. You can use the "Database Restore" feature to restore the backed up files to MongoDB 3.2.
3.2.6	Never be registered as windows; No service named "MongoDB"	You have already installed MongoDB 3.2, but it has not been registered as a Windows service. You can use the "MongoDB Settings" feature to register it as a Windows service and use the "Database Restore" feature to restore the backed up files to MongoDB 3.2.
2.6.5 3.2.6	3.2.6 was registered as windows service named as "MongoDB"	You have already installed both MongoDB 2.6 and 3.2 and MongoDB 3.2 is registered as a Windows service. You can use the "Database Restore" feature to restore the backed up files to MongoDB 3.2.
2.6.5 3.2.6	2.6.5 was registered as windows service named as "MongoDB"	You have already installed both MongoDB 2.6 and 3.2 and MongoDB 2.6 is registered as a Windows service. You can use the "Database Backup" feature to back up the D-View 7 database and the "MongoDB Settings" feature to install, upgrade or register MongoDB 3.2.
2.6.5 3.2.6	One of them was registered as windows service named as "MongoDB", but the tool cannot analysis which one supply the service.	You have already installed both MongoDB 2.6 and 3.2 and one of them is registered as a Windows service. Please uninstall the unregistered one first.
2.6.5 3.2.6	Both them were not be registered	You have already installed MongoDB 2.6 and 3.2, but they have not been registered as a

	as windows; No service named "MongoDB"	Windows service. You can use the "MongoDB Settings" feature to register MongoDB 3.2 as a Windows service and use the "Database Restore" feature to restore the backed up files to MongoDB 3.2.
No 2.6.5 No 3.2.6	No "MongoDB" service	There is no MongoDB on this PC. You can use the "MongoDB Settings" feature to install MongoDB 3.2, register it as a Windows service, and then use the "Database Restore" feature to restore the backed up files to MongoDB 3.2.
No 2.6.5 No 3.2.6	There is a windows services named "MongoDB"	An unknown version MongoDB has been registered as a Windows service. This tool can only be used with the version of MongoDB installed by D-View 7 or this tool.

3.4 Step 2, click Data Backup button to back up the database if you already install D-View 7 and have data inside the database. You will see following screen shot



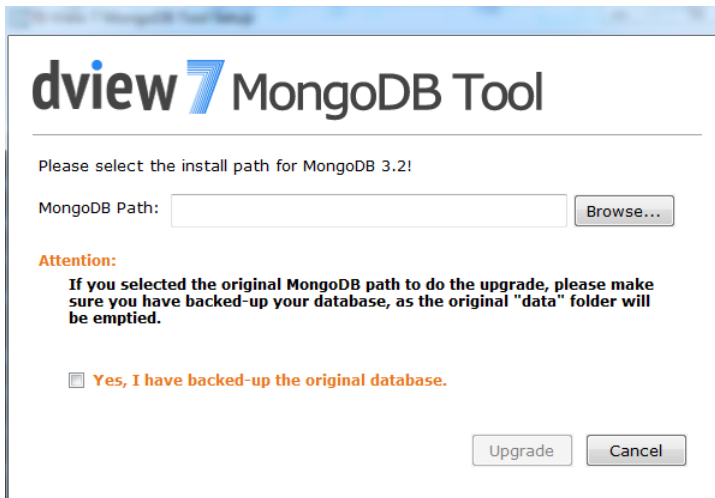
- The "Backup Path" will be set as "\$ToolPath\Backup" by default. (\$ToolPath is the tool's running path).

Note: The "Bacukup Path" only accepts English naming.

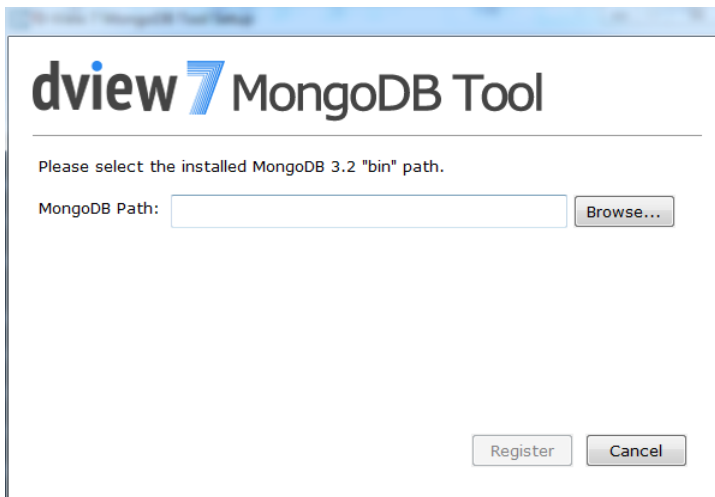
- When you click "Backup" button, a console windows will pop-up. When you see the "press any key to continue", you can click any key to finish the backup process.

3.5 Step 3, click MongoDB Settings button to install MongoDB 3.2 and related configuration.

- Please specify the path to install new MongoDB. Be sure to back up your data first if you would like to install MongoDB v3.2 at the same path;
- Click the check box for next step if you already or complete the data backup.

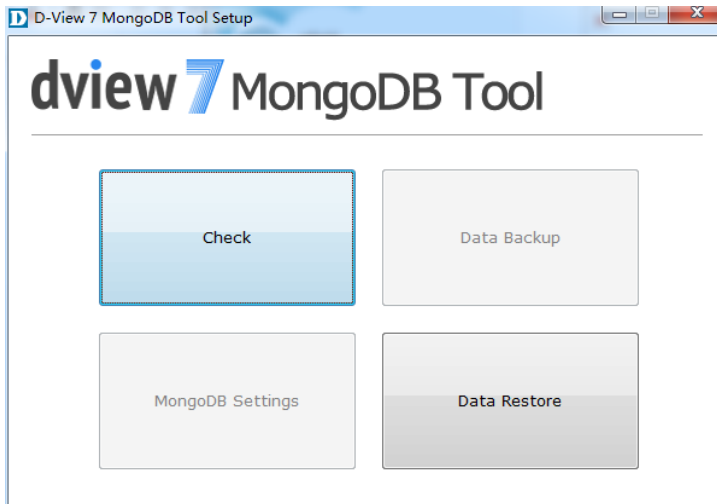


- Specifying the path which contains MongoDB bin file to register MongoDB as a Windows service. The Register button will not be enabled until system finds the needed bin file.

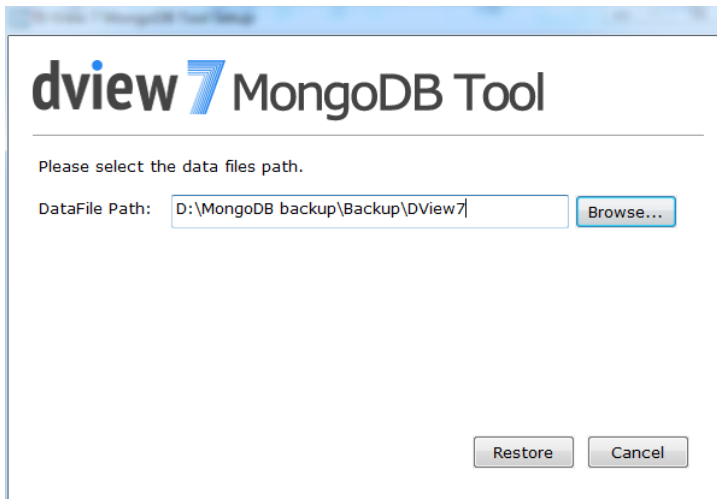


3.6 Step 4, restore the database.

- If your D-View server installed MongoDB 3.2 and also be registered as a Windows service, you can click Data Restore button to restore your data to new MongoDB.



- Select the backup data's file path. For example, D:\MongoDB backup\Backup\DView7; clicking Restore button to start the process. When you see "done" message in the console windows, clicking any button to complete the process.



Note: You can find more detailed information in D-View7's user manual about MongoDB migration processes and related troubleshooting instruction.

4 D-View Probe Installation or Upgrade:

4.1 For users who install remote probe for the first time.

- Please download probe installation software from D-View Web site and execute that installation file.

4.2 For users who already install probe

- D-View will automatically check Probe's software version and processes the software upgrade procedure if any newer software version available.

New Features

Firmware Version	New Features
Server: v1.3.0.7 Probe: v1.0.6.0	<ol style="list-style-type: none"> Support following models: <ul style="list-style-type: none"> - DES-1210-08P, C2 - DES-1210-28P, C2 - DES-1210-28, C1 - DES-1210-52, C1 - DES-1210-10/ME, B1, B2 - DES-1210-28/ME, B3 - DES-1210-52/ME, C1 - DES-3200-10-DC, C1 - DES-3200-18-DC, C1 - DES-3200-26-DC, C1 - DES-3200-28F, C1 - DGS-1100-06/ME, A1 - DGS-1100-10/ME, A1 - DGS-1100-18/ME, B1 - DGS-1100-24/ME, B1 - DGS-1100-24P/ME, B1 - DGS-1100-26/ME, B1 - DGS-1210-28MP/ME, B1 - DGS-1210-28P, B1 - DGS-1210-28MP, E1 - DGS-1210-52MPP, E1 - DGS-1210-24, D1 - DGS-1210-16, D1 - DGS-1210-48, D1 - DGS-1210-08P, D2 - DGS-1210-24P, D2 - DGS-1210-10/ME, A1, B1

- DGS-1210-10P/ME, A1, B1
- DGS-1210-20/ME, A1, B1
- DGS-1210-28/ME, A1, B1
- DGS-1210-28P/ME, A1, B1
- DGS-1210-28MP/ME, B1
- DGS-1210-52/ME, A1, B1
- DGS-1210-52P/ME, A1, B1
- DGS-1210-52MP/ME, A1
- DGS-1210-52MPP/ME, B1
- DGS-1210-12TS/ME, B1
- DGS-1210-28X/ME, B1
- DGS-1210-28XS/ME, B1
- DGS-1510-28L/ME, A1
- DGS-1510-28LP/ME, A1
- DGS-1510-28X/ME, A1
- DGS-1510-28XMP/ME, A1
- DGS-1510-52X/ME, A1
- DXS-1100-10TS, A1
- DXS-1100-16TC, A1
- DXS-1100-16SC, A1
- DXS-1210-10TS, A1
- DXS-1210-12TC, A1
- DXS-1210-12SC, A1
- DXS-1210-16TC, A1
- DGS-3000-10TC, A2
- DGS-3000-24TC, A2
- DGS-3000-26TC, A2
- DGS-3120-48PC, A2
- DGS-3120-24SC, A2
- DGS-3120-24TC, A2
- DGS-3120-48TC, A2

- DGS-3120-24PC, A2
- DGS-3120-24SC-DC, A2
- DXS-3400-24TC/24SC, A1, firmware ver. 2.00.009
- DGS-3620-28PC, A1/B1
- DGS-3620-28TC, A1/B1
- DGS-3620-28SC, A1/B1
- DGS-3620-52P, A1/B1
- DGS-3620-52T, A1/B1
- DGS-3630-28SC, A1
- DGS-3630-28TC, A1
- DGS-3630-52TC, A1
- DWM-312, A1

2. Support following new features:

- The Core Server supports clustering architecture.
- Support a new link type, the *Logical Link*, in customized topology. (**Monitor > Topology View > Customized**)
- Add two modes to **Customized** topology, the *Synchronization with System* and *User-Defined* modes, users can decide if customized topology will be synchronized with **Default** topology or not.
- Add a new information *Detection Source* in the connection's pop-up window when hovering mouse on a topology's link.
- Support new feature, *Trap Editor* (**System > Trap Editor**), which allows users to configure meaningful and readable description for each trap and associated binding variable.
- The **Monitor > Device View** supports "Mobile" new device type.

3. Features Improvement:

- Improve License Agent Service's operation which is able to automatically detect and reconnect the MongoDB.
- Improve the managed devices' firmware upgrade design for devices which need longer time for rebooting.
- Enhance Probe's data collection mechanism.
- When local probe is off line, an "exclamation mark" will display nearby the status LED icon; when move mouse cursor over the exclamation mark, a pop up window will display with detailed information.
- Improve *Event View*'s display; adding "..." in the end of alert

message and a pop up window will display when moving mouse cursor over it.

- Change the DGS-6600's topology icon with chassis one.
- Improve the LACP, LLDP and FDB link analysis algorithm to enhance the topology accuracy.
- Add new columns, the *Channel Group ID* and *Member Port*, for *LACP Working Status* widget in **Inventory**'s device detail page.
- Raise the user-defined link's priority in **Monitor > Topology**, where if there's topology refreshing, the user-defined topology layout will not be affected.
- The settings be configured by users in **Monitor > Topology View > Display** can be saved without resetting to default when user switches to different function pages.
- The Default topology in **Monitor > Topology View** is allowed to be edited by users.
- The default user account *Admin* is allowed to add email address and user can use that address as User ID to login D-View.

Server: v1.2.1.0
Probe: v1.0.4.3

1. Support following models:

- DGS-6604/6608
- DES-3852, A1
- DGS-1100-10MP, B1
- DGS-1100-10MPP, B1
- DGS-1100-26MPP, B1
- DGS-1100-06/ME, A1
- DGS-1100-10/ME, A1
- DGS-1100-16, B1
- DGS-1100-18, B1
- DGS-1100-24, B1
- DGS-1100-26, B1
- DGS-1100-24P, B1
- DGS-1210-10, C1
- DGS-1210-10P, C1
- DGS-1210-28, C1
- DGS-1210-28P, C1
- DGS-1210-52, C1

- DGS-1210-52P, C1
- DGS-1210-52MP, C1
- DGS-1210-10ME, B1
- DGS-1510-20, A1
- DGS-1510-10L/ME, A1
- DGS-1510-20L/ME, A1
- DGS-1510-28XS/ME, A1
- DGS-1510-52L/ME, A1
- DGS-3000-10TC, A1
- DGS-3000-24TC, A1
- DGS-3000-26TC, A1
- DGS-3000-28SC, A1
- DXS-3400-24TC, A1
- DXS-3400-24SC, A1
- DXS-3600-32S, B1
- DXS-3600-16S, B1
- DSR-1000AC, A1
- DWR-925, B1

2. Support following new features:

- Notification Center
- Support 'SSH Status Configuration' new configuration template in **Maintenance> Batch Config> Common Template** function.
- Support Ping Helper new feature in **Monitor> Ping Helper** function.
- The license management in **System> License** function tree supports Deactivate License and Unbind License new features.

3. Support Windows 10 OS.

4. Features Improvement:

- Limit the Syslog and Trap log storage space to 300MB preventing from system collapse.
- Modify the sorting and searching design for tables in Inventory, Task Management, Monitor Logs and Notification Center functions.
- Add "Show More" button in **Maintenance> Task Management> Latest Result** and **System> Notification Center> Latest Result**'s Time List column (click the hyper link in the Latest Result

	<p>field) to support more entries.</p> <ul style="list-style-type: none"> - Improve database connection mechanism to ensure the stability between D-View core server and local database. - Modify the connection mechanism between the Core Server and Probe to enhance the stability. - D-View still can receive traps from devices which D-View may not be able to configure devices' trap or syslog server by SNMP protocol. - Add two new matching criteria, "Keyword" and "Full Match", in Trap and Syslog sensor's alert rule to provide more precise event notification. - Improve "Trap" and "Syslog" merging mechanism so that the traps or syslogs sent by the same device in 1 minute will be merged into a single message. - Enhance third party devices support; users can create following sensors to collect associated information and display it on dashboard. <ul style="list-style-type: none"> ■ Ping ■ Traffic Statistics ■ Customized SNMP sensor to collect HTTP/HTTPS packet or specifying specific OID for collection. ■ Device Detail page will display third party's brand name, model name and port interfaces. - Improve Inventory page's IP address sorting method. - Improve Monitor> Topology View's refresh design; remove the "refresh" button and provide auto-refresh mechanism with several refresh time intervals for selection. - Provide more time intervals for the Ping sensor in System> Sensor Settings function tree. The intervals are 5/ 10/ 15/ 30/ 60/ 300/ 600/ 900 and 1800 seconds. - Improve the Monitor Port assignment design in System> Sensor Settings> Wired Traffic sensor; each sensor rule is allowed to assign a single port or multiple ports in Monitor Port field. - Improve the log message display in Monitor> Monitor Logs; the log message will include specific port ID which triggers the event to D-View server.
<p>Server: v1.0.2.4 Probe: v1.0.1.9</p>	<p>First release, please refer to the datasheet for the detailed information.</p>

Problem Fixed

Firmware	Problems
----------	----------

Version	
Server: v1.3.0.7 Probe: v1.0.6.0	<ol style="list-style-type: none"> Fixed the issue that when user paused a task in the Batch Config (Maintenance > Batch Config), the pause action will not work. (DI20160817000001) Fixed the issue that when exporting the Star topology (Monitor > Topology View) on IE10 & IE11, D-View exported an incomplete topology. (DI20160812000004) Fixed the issue that when devices were offline, D-View cannot trigger events. (DI20160817000002) Fixed the issue that the device's port LED in Rack View (Monitor > Rack View) sometimes cannot display correctly. (DI20160815000003) Fixed the issue that if user configured IP discovery range with CIDR subnet mask /23, the discovered information might be inaccurate. (DEUR20160817000005) Fixed the issue that the Top 10 Wired Error Packet on the dashboard (Dashboard > Overview) will display "no data" even though the managed devices did transmit or receive error packets. (DI20160912000001) Fixed the issue that D-View will fail to upgrade firmware on DGS-3120-24TC B1 hardware version switch. (DI20160715000004) Fixed the issue that the correct network topology will be changed to incorrect one after the automatically polling cycle. (DI20160823000001) Fixed the issue that when executed firmware upgrade process on D-View for G2 switches, D-View might fail to set the next boot-up image parameter. (DI20160905000003) Fixed the issue that when customized 3rd party's switch, whatever the real port count is, D-View will always change the value to 64. (DI20161221000005) Fixed the issue that D-View will fail to configure SSH feature of DGS-3120-24TC, B1 hardware version switch. (DEUR20170202000001)
Server: v1.2.1.0 Probe: v1.0.4.3	<ol style="list-style-type: none"> Fixed the issue that D-View cannot display correct switch model in a physical stack. (DI20150615000003) Fixed the issue that D-View cannot backup DXS-3600's configuration successfully. (DEUR20150602000007) Fixed the issue that user will see "Server Error in 'DView 7' Application" message when trying to startup D-View. (DGC20150604000003) Fixed the issue that the database initialization will failure when running on

- OS with Russian language. ([DRU20150630000002](#))
- 5. Fixed the issue that user cannot start up D-View and will see a “Core Server Error” message. ([DEUR20150803000001](#))
- 6. Fixed the issue that user cannot add the purchased quantity of probe license. ([DGC20150916000002](#))
- 7. Fixed the issue that D-View cannot successfully apply script file to some switch models when running **Maintenance> Batch Config** feature. ([DGC20151112000001](#))
- 8. Fixed the issue that when selecting **Dashboard> Wireless** function to check the status of APs which are managed by DWC-2000 wireless controller, the “Top 10 Current Client by SSID”, “Client by Authentication Type” and “Top 10 Client by AP” widgets’ data will be empty. ([DGC20151114000001](#))
- 9. Fixed the issue that the link speed information is not correct in **Monitor> Topology View** function. ([DI20151118000001](#))
- 10. Fixed the issue that the email notification sometimes worked abnormally when receiving some specific traps, such as LinkUp and ifIndex table with “13” inside. ([DGC20151201000003](#), [DGC20151110000003](#))
- 11. Fixed the issue that D-View core server will crash when probes receive too many traps and system logs. ([DGC20160104000001](#))
- 12. Fixed the issue that the installation log will display “ERROR (message:Cannot find requested collection element)” message when installing D-View core server on Windows 10 OS. ([DEUR20151215000002](#))
- 13. Fixed the issue that D-View cannot display DWL-8610AP’s client information in device detail page. ([DI20160408000005](#))
- 14. Fixed the issue that the content in label’s pop-up window does not refresh to correct content when user used IE10, IE11 and Edge browser to view Inventory’s detailed devices list. ([DI20160707000004](#))

Server:
v1.0.2.4

Probe:
v1.0.1.9

First release

* [D-Link tracking number is enclosed in \(\)](#)

Known Issues

Firmware Version	Issues	Workaround
Server: v1.3.0.6 Probe: v1.0.6.0	When user upgrades D-View from 1.0.2.4 to 1.2.1.0, if there are customized devices (3 rd party's model), you need to customize the configured devices again in 1.2.1.0 as this version supports more features on 3 rd party devices.	NA
Server: v1.2.1.0 Probe: v1.0.4.3	When user upgrades D-View from 1.0.2.4 to 1.2.1.0, if there are customized devices (3 rd party's model), you need to customize the configured devices again in 1.2.1.0 as this version supports more features on 3 rd party devices.	NA
Server: v1.0.2.4 Probe: v1.0.1.9	1. D-View 7 "Topology View" and some tables which include devices info cannot support some special characters, such as '<' or '>'.	User can delete the '<' and '>' which exists in D-View 7 managed devices system info to avoid this issue.
	2. The installation cannot be run on Windows Server 2008 if user wants to install MongoDB with D-View 7 installation. That because the MongoDB installation program packaged in the D-View 7 installation can only run on Windows Server 2008R2, Windows 7 64-bit, Windows 8, and latest versions of Windows.	NA

Related Documentation

- D-View 7 Network Management System User Manual v1.3