

MEGAM.O.L.E.® Series Thermal Profilers Calibration Procedure

For *MEGAM.O.L.E.® 20*, *V-M.O.L.E.®* & *SuperM.O.L.E.® Gold 2*



ECD, Inc.

4287-B S.E. International Way
Milwaukie, Oregon 97222-8825

Telephone: (800) 323-4548

FAX: (503) 659-4422

Technical Support: (800) 323-4548

Email: ecd@ecd.com

Internet: <http://www.ecd.com>

Calibration Information

Because the M.O.L.E.® Thermal Profiler is made with precision components with high temperature stability and tight tolerances, the analog-to-digital converter remains stable for years. High quality components together with software algorithms based on the **IPTS-90*** standard for **Type K** thermocouples have been provided to yield the specified accuracy and long-term stability. Each unit has been tested at the factory before it is shipped.



ECD recommends the M.O.L.E.® Thermal Profiler is factory re-calibrated every 6 months when it is being used constantly. If the use is occasional, a period of no greater than 12 months between calibrations is recommended.

Good thermal quality programs require periodic calibration to show the Thermal Profiler continues to remain in calibration using a temperature standard. Any observed inaccuracies are probably not caused by calibration error but by any one of a number of other sources, primarily the following:

1. Poor thermocouple connections or open thermocouples.
2. Using a standard that is inaccurate or one not traceable to the National Institute of Standards and Technology.
 - Check the accuracy of your standard and that it is traceable to NIST. Be sure that you're using **Type K** special limits of error wire connected to the standard. Be sure that your standard is cold-junction compensated, or use an ice-point reference.
 - Make sure that IPTS-90 tables are being used.
3. Extremely low Power Pack charge.
 - Recharge the Power Pack. Refer to M.O.L.E.® MAP User Help System for details.
4. Sudden changes in ambient temperature.
 - Allow the M.O.L.E.® Thermal Profiler to stabilize for 1/2 hour before calibration.

If after checking these possible sources of inaccuracy and the M.O.L.E.® Thermal Profiler still needs to be calibrated, proceed as directed.

* IPTS-90 - International Practical Temperature Scale of 1990

Equipment Required:

1. Voltage reference and an ice point reference.
 - Resolution: 1 μ V or better
 - Accuracy: 5 μ V or better
 - Output Imp: ≤ 10 ohms

OR

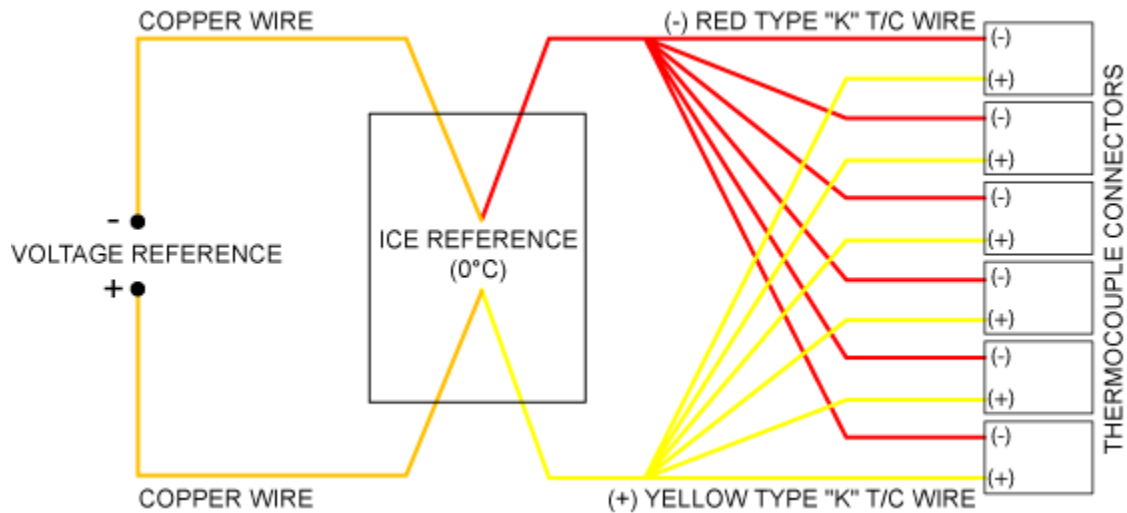
Thermocouple Simulator

- Resolution: 0.1 $^{\circ}$ C
 - Accuracy: 0.25 $^{\circ}$ C
 - Output Imp: ≤ 10 ohms
2. Thermocouple harness (special limits of error)
 3. Thermal Isolation Box (Thermal Barrier)
 4. Thermocouple Simulator software program
 - Hyperterminal (Windows)
 5. USB computer interface cable

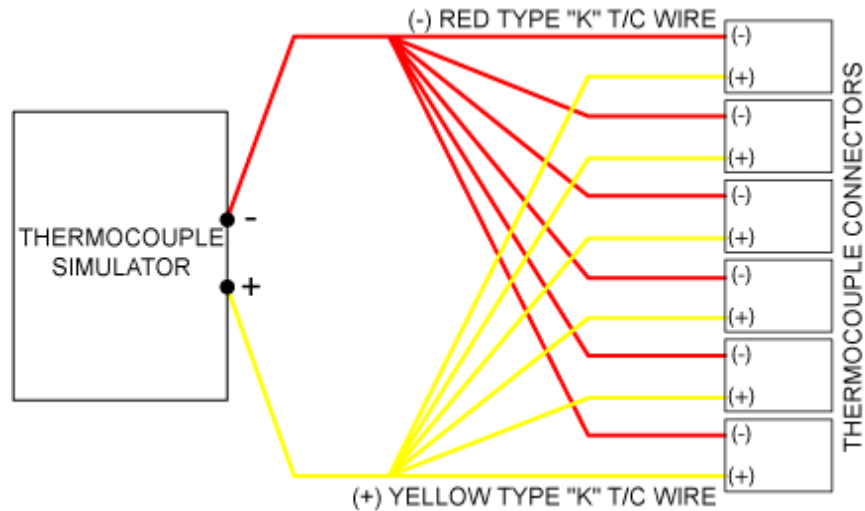
Setup

The equipment you use for the calibration determines the setup procedure. The number of thermocouples vary depending on the M.O.L.E.® Thermal Profiler. These examples display the use of 6 channels.

Voltage reference and ice point reference:

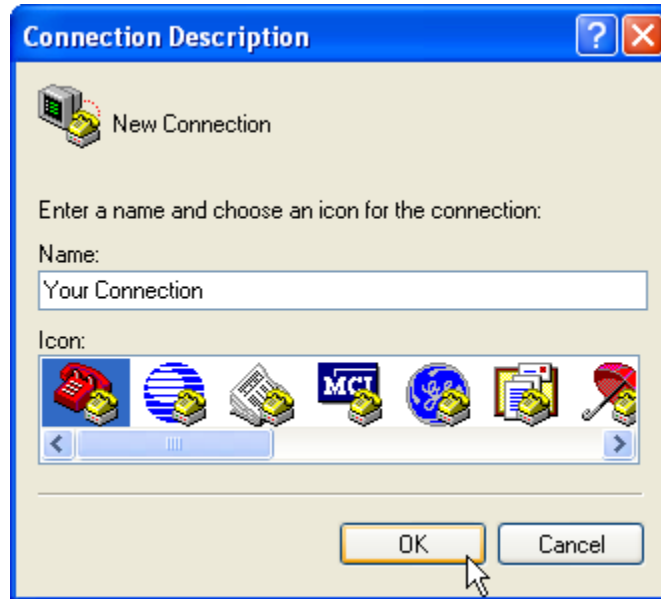


Thermocouple Simulator:



Procedure

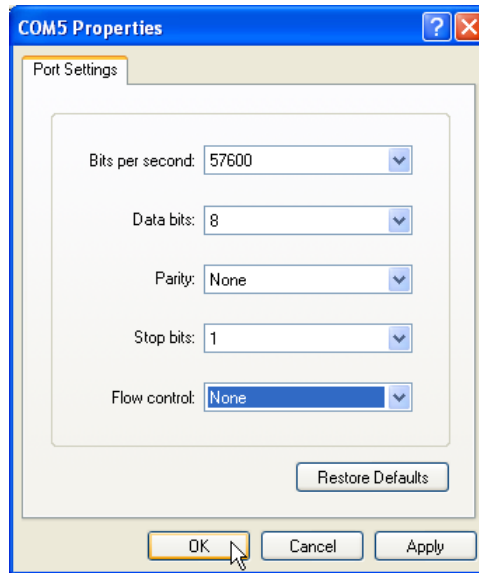
1. Connect the M.O.L.E.® Thermal Profiler to calibration standard.
2. Connect the M.O.L.E.® to a USB port with the USB computer interface cable.
3. Insert the M.O.L.E.® into the Thermal Isolation Box.
4. Start Hyperterminal.
5. Enter any **Name** for the Connection Description.



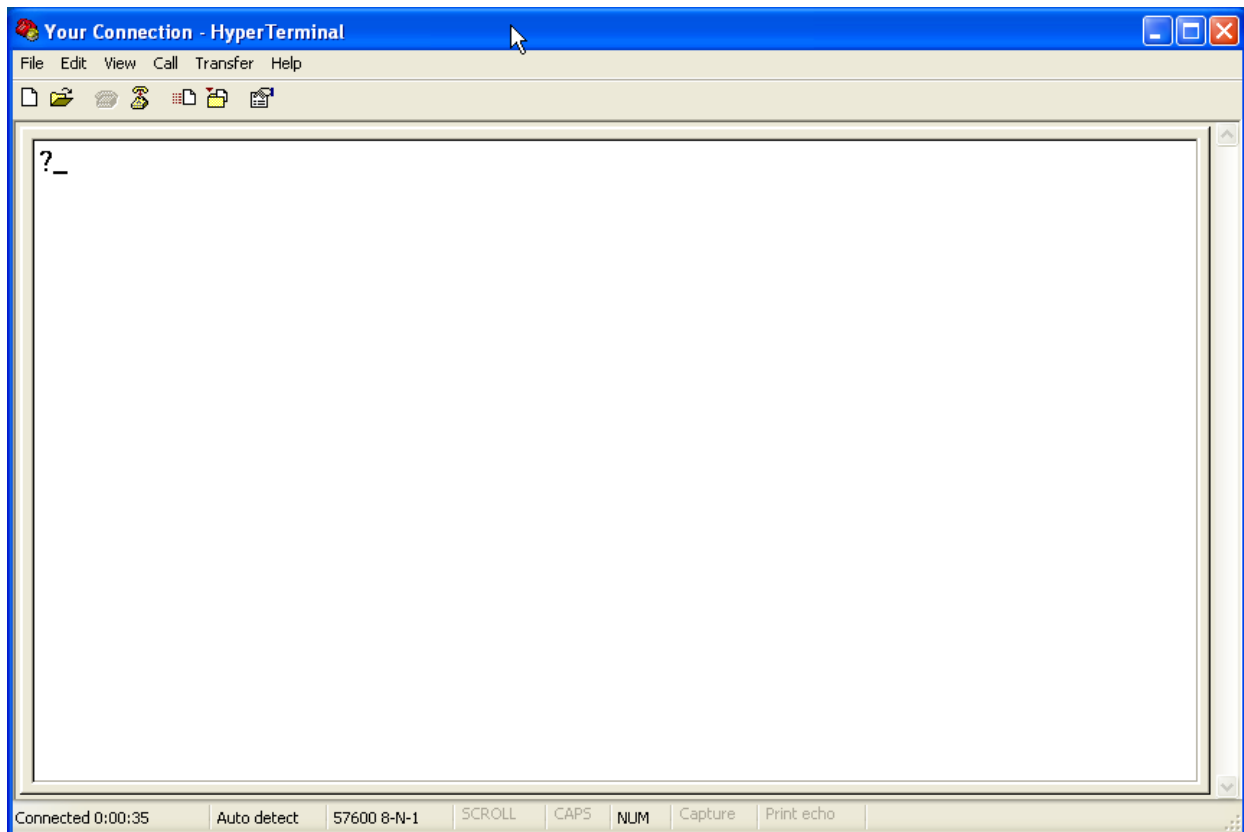
6. Select the COM port number that the operating system assigned to the USB port that the M.O.L.E.® is connected to. The **Connect Using** drop down list displays all of the available COM ports so it may require a few attempts to determine the correct port.



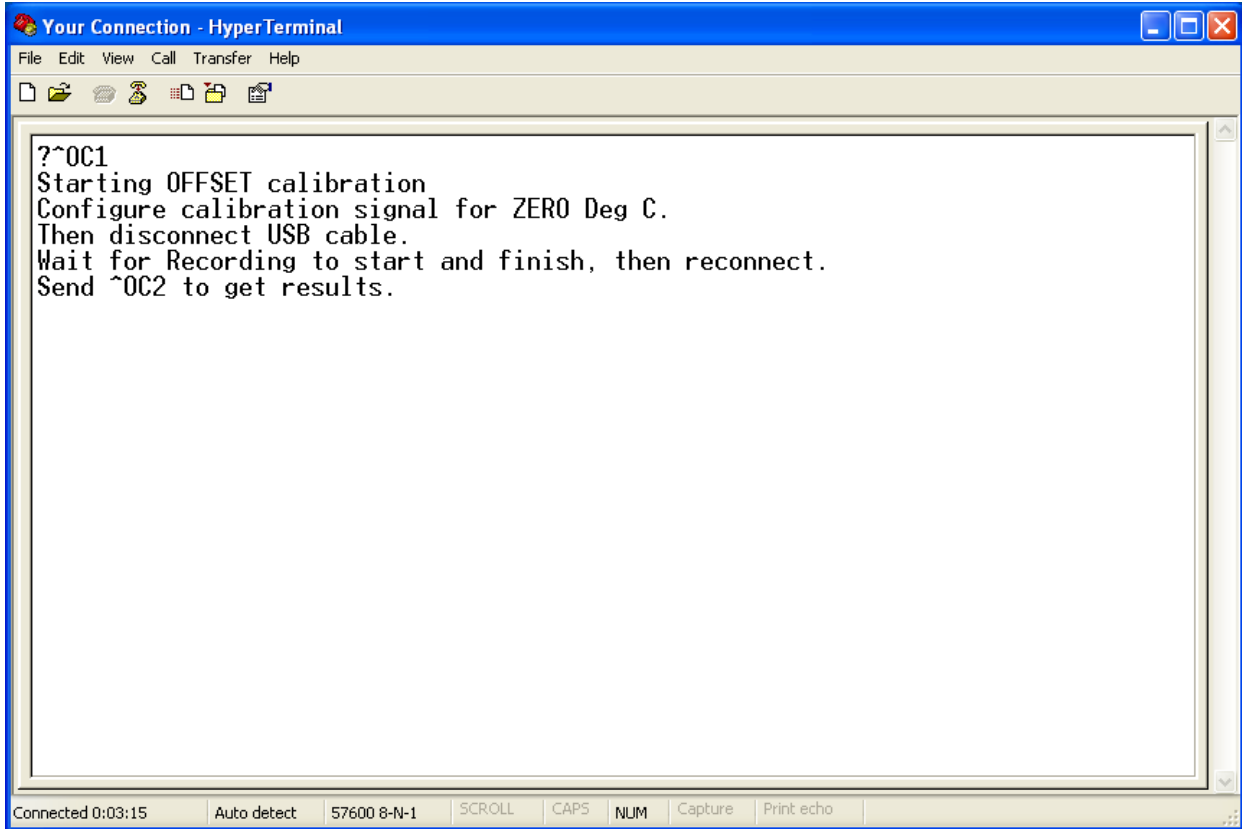
7. Enter the COM Port Properties as shown.



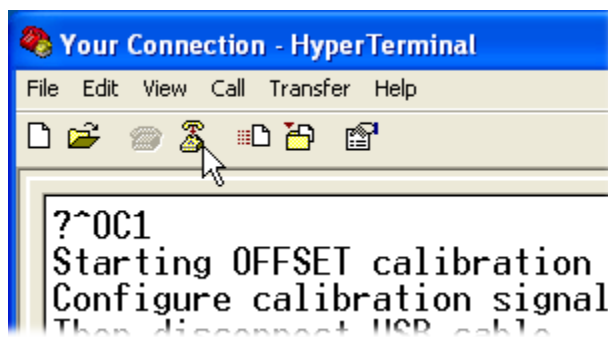
8. When finished select the **OK** command button and Hyperterminal displays a blank screen to enter commands directly to the M.O.L.E.®.
9. Hit **Enter** to display a "?_". If Hyperterminal does not display a "?_", that means the correct COM Port was not selected in Step 7.



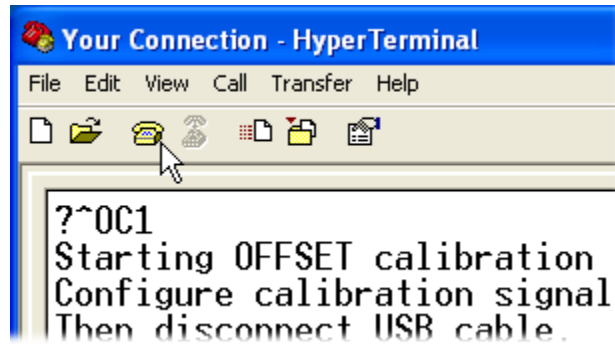
10. Enter: **^OC1**. This starts the calibration and the M.O.L.E.® replies with instructions:



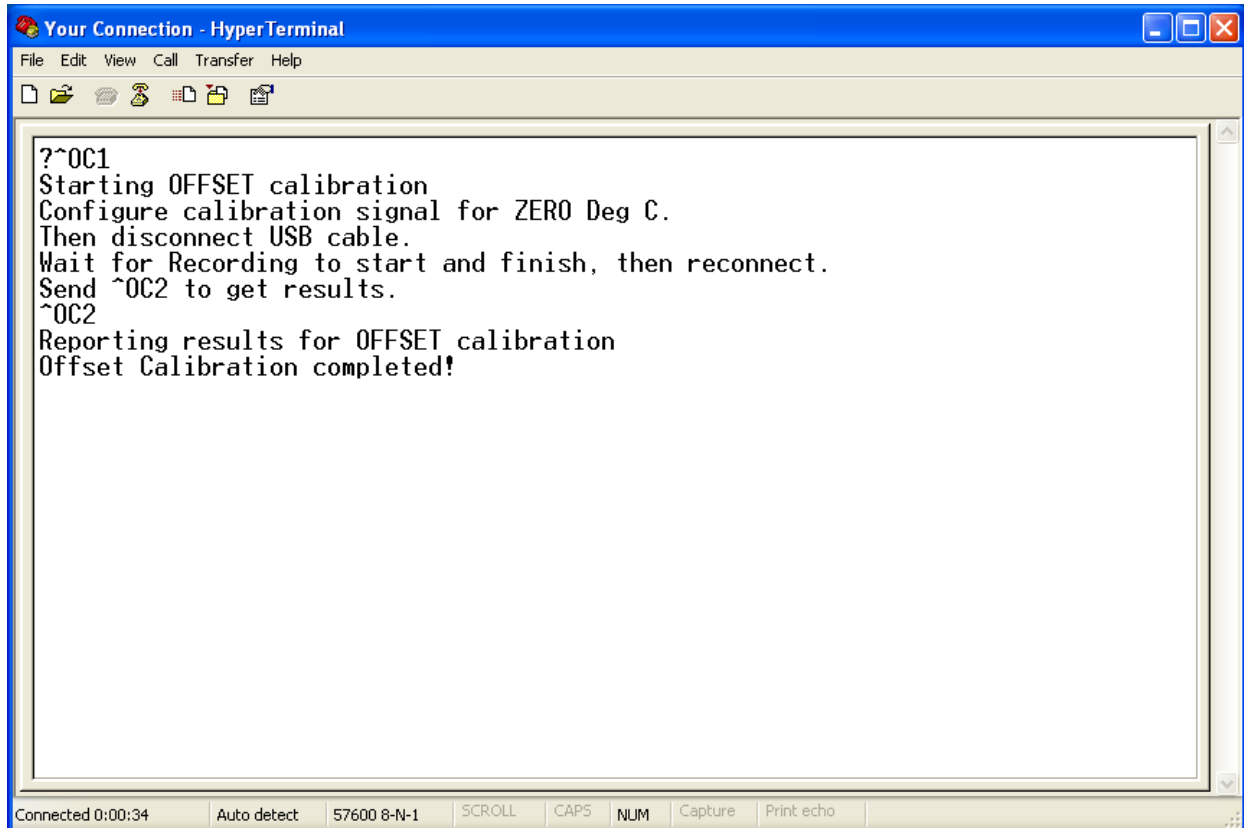
11. Set the standard to 0.0°C, disconnect the M.O.L.E.® from the computer and then select **Disconnect** on the Hyperterminal Toolbar. The M.O.L.E.® records for about 20 seconds and stops.



12. Connect the M.O.L.E.® to the computer again and select **Call** on the Hyperterminal Toolbar.

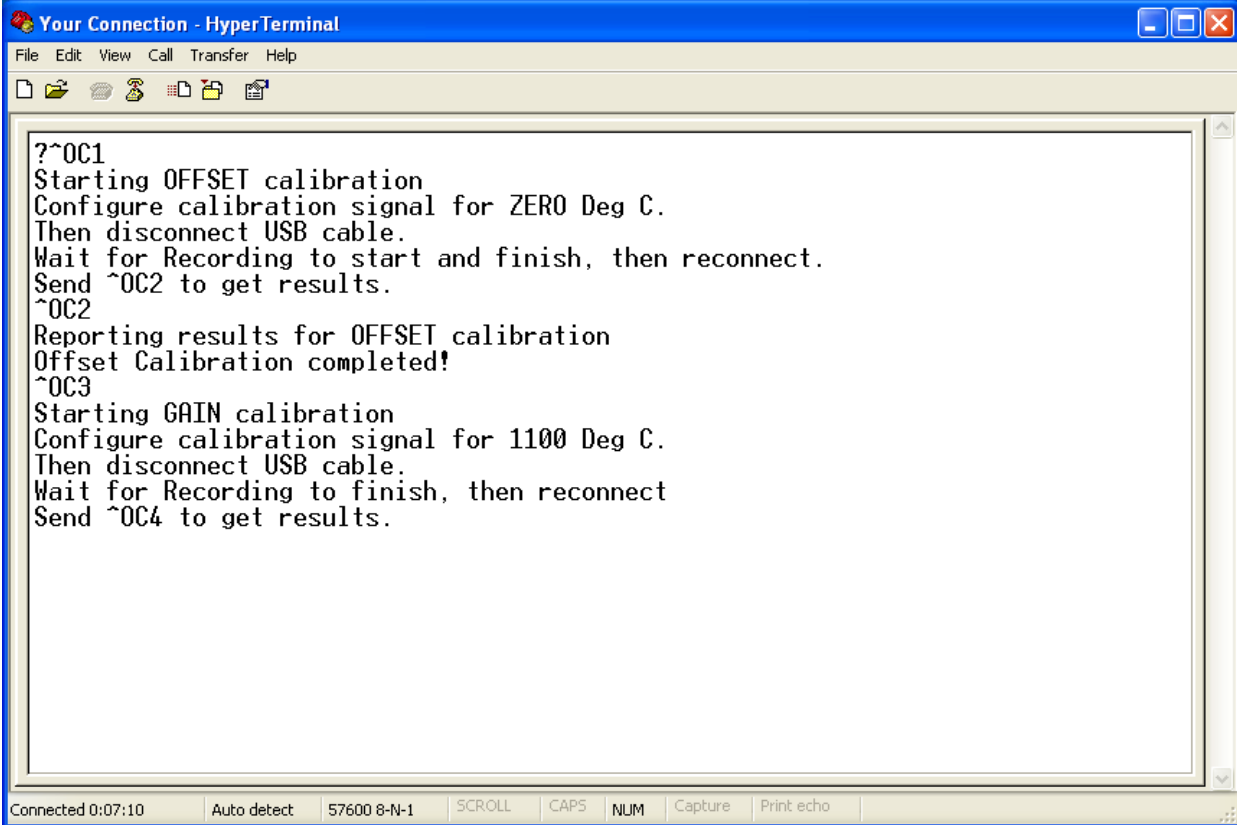


13. Enter: ^OC2.



14. The M.O.L.E.® reports success or failure. If successful, Hyperterminal displays: **Offset Calibration completed!** then enter: ^OC3. If failure, repeat ^OC1 as directed in Step 10.

15. The M.O.L.E.® replies with instructions:

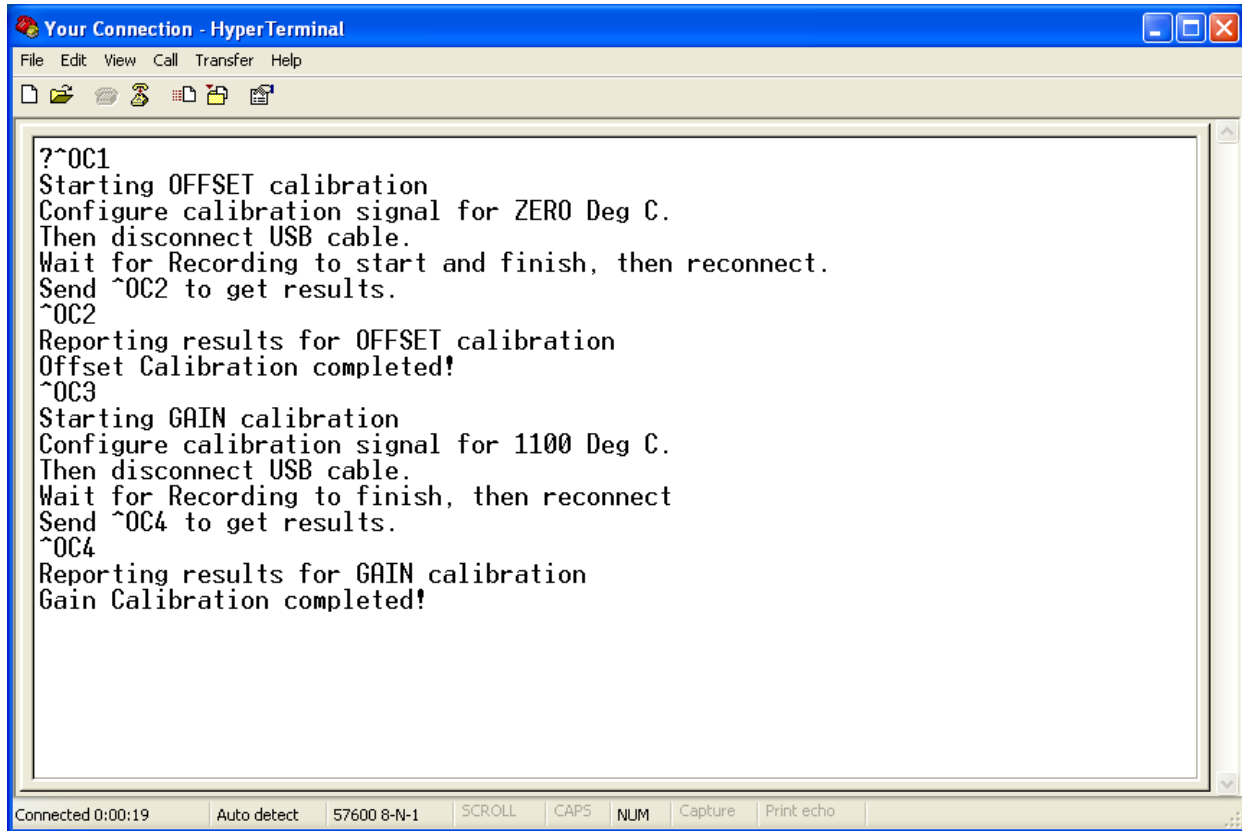


```
?^OC1
Starting OFFSET calibration
Configure calibration signal for ZERO Deg C.
Then disconnect USB cable.
Wait for Recording to start and finish, then reconnect.
Send ^OC2 to get results.
^OC2
Reporting results for OFFSET calibration
Offset Calibration completed!
^OC3
Starting GAIN calibration
Configure calibration signal for 1100 Deg C.
Then disconnect USB cable.
Wait for Recording to finish, then reconnect
Send ^OC4 to get results.
```

16. Set the standard to 1100.0°C, disconnect the M.O.L.E.® from the computer and then select **Disconnect** on the Hyperterminal Toolbar. The M.O.L.E.® records for about 20 seconds and stops.

17. Connect the M.O.L.E.® to the computer again and select **Call** on the Hyperterminal Toolbar.

18. Enter: **^OC4**.



```

Your Connection - HyperTerminal
File Edit View Call Transfer Help
?^OC1
Starting OFFSET calibration
Configure calibration signal for ZERO Deg C.
Then disconnect USB cable.
Wait for Recording to start and finish, then reconnect.
Send ^OC2 to get results.
^OC2
Reporting results for OFFSET calibration
Offset Calibration completed!
^OC3
Starting GAIN calibration
Configure calibration signal for 1100 Deg C.
Then disconnect USB cable.
Wait for Recording to finish, then reconnect
Send ^OC4 to get results.
^OC4
Reporting results for GAIN calibration
Gain Calibration completed!

```

Connected 0:00:19 Auto detect 57600 8-N-1 SCROLL CAPS NUM Capture Print echo

19. The M.O.L.E.® reports success or failure. If successful, Hyperterminal displays: **Gain Calibration completed** then hit the **Enter** key which displays the “?_”. If **failure**, repeat **^OC3** as directed in Step 14.

20. Now perform a calibration confirmation. Select **Disconnect** on the Hyperterminal Toolbar, disconnect the M.O.L.E.® from the computer and record several temperature values downloading them into M.O.L.E.® MAP software to see if they are within the ECD specification. If acceptable, connect the M.O.L.E.® to the computer again and select **Call** on the Hyperterminal Toolbar. Enter: **^OCD** then **^OCA**.

Manufacturer Specification: +/- 1°C of reading

Those commands set the calibration date and stores the calibration constants as archive values:

Your M.O.L.E.® Thermal Profiler is now calibrated