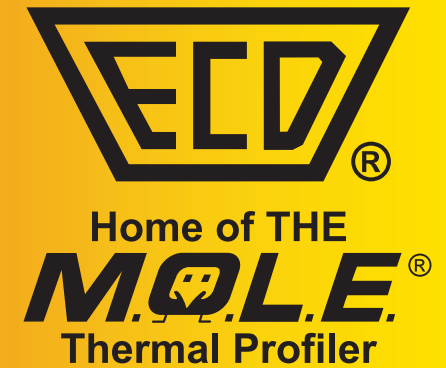
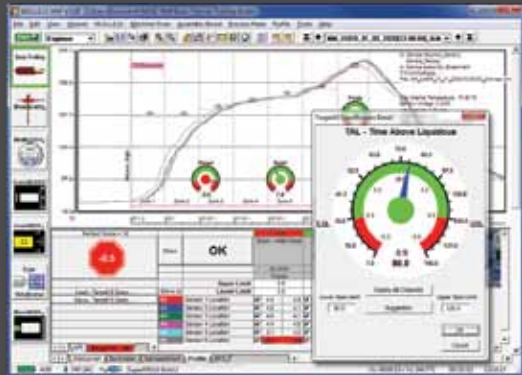


# The industry-standard M.O.L.E.<sup>®</sup> Thermal Profiler is now better and smarter than ever before.



### Target-10 Specifications for:

- Ramp
- Soak
- TAL (Time Above Liquidus)
- Peak



"The intuitive nature of the MAP software's Wizard functionality makes new process development a breeze."

--Lee Hasselbeck,  
Manufacturing Engineer,  
Captor Corporation

### 1.5 Million Data Point Memory

96 thermal profile storage lets you download on demand

### Auto-Detect

Thermal Profiler automatically recognizes the RIDER<sup>®</sup> NL 2 series process test pallets

### Protect your Time & Profiler

Know critical systems are "GO" before you thermal profile

### OK Button

- Operator gets GO/NO-GO decision control
- Improves productivity
- Saves Time

### Wireless RF

Built-in Wireless Option

### Easy to Use

USB enabled Fast Upload, Download or Charge

### New ECD Technology

### LEDs Show T/C Readiness

- No wasted data runs
- At a glance open thermocouple indicators

### Never Lose a Thermal Profile

- Separate On/Off & Record buttons
- Prevents lost profiles

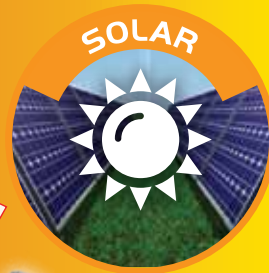
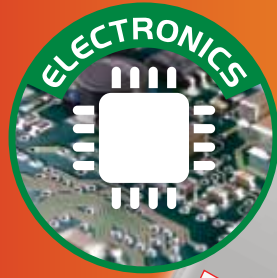


### SuperM.O.L.E.<sup>®</sup> Gold 2 & M.O.L.E.<sup>®</sup> MAP 3.0

Selectable environments to separate one profiling data acquisition activity from another



# SuperM.O.L.E.® Gold 2



The Smartest Profiler  
on the Planet



## FEATURES

- 96 Runs between downloads
- Instant profile validation with the patented "OK" test button.
- Onboard LED indicators for:
  - Thermocouple-readiness
  - RIDER® pallet connectivity
  - Core temperature warning
  - Battery charge low
  - RF-enabled
  - On/Off – Record
  - Patented "OK" button for profile-to-specification GO/NO-GO decision
  - Charging in progress

Improve Yield, Save Time, Lower Costs

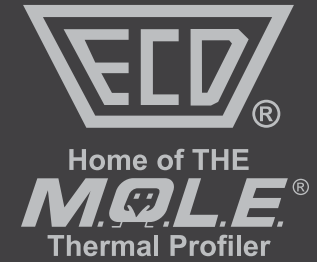
## SPECIFICATIONS

Accuracy:.....  
 Resolution:.....  
 Channels:.....  
 Power:.....  
 RF Frequency (2-way):..  
 Profiler Size:.....

Know your thermal process is in control!

- Characterize
- Verify
- Monitor

ECD delivers consistent results and increased yields.



**ECD** World Headquarters  
 North & South America, Europe  
 4287-B SE International Way  
 Milwaukie, Oregon 97222-8825 U.S.A.  
 Tel: +(1) 503.659.6100 | +(1) 800.323.4548  
 Fax: +(1) 503.659.4422  
 E-Mail: sales@ecd.com | ecd.europe@ecd.com  
 www.ECD.com

**ECD** Asia  
 ECD Asia/Pacific  
 Singapore  
 Mobile: +(65) 9692.6822  
 Email: ecd.asia@ecd.com  
 www.ECD.com

**MADE IN U.S.A.**

Contact us directly at:  
 Sales@ECD.com  
 - or -

Find a Sales Rep or Distributor at:  
 www.ECD.com/contact/  
 - or -