

Louisville Historical Museum & Visitor Center

**CONCEPTUAL DESIGN
COMMUNITY OPEN HOUSE PRESENTATION**

October 2, 2017

Design Team

THE ROYBAL CORPORATION ARCHITECTS

ARCHITECTURE / EXHIBIT DESIGN

Michael Roybal, AIA
Ronald Roybal, AIA
Trevor Hill, Assoc AIA
Toni Roybal

Design Principal
Design Principal
Designer
Exhibit Design

NORRIS DESIGN

LANDSCAPE ARCHITECTURE

John Birkey, ASLA
Jordan Dame, ASLA

Principal
Landscape Architect

Guiding Principles - City Regulations

- **Compliance with Louisville Historic Preservation Masterplan**
- **Compliance with Louisville Museum Campus Masterplan**
- **Louisville Downtown Design Handbook**
 - Keep it Simple
 - Relate to Traditional Surrounding Buildings
 - Use the Entire Front of the Building as Your Image
 - Develop a Clear Presentation to the Street
- **City of Louisville Municipal Code – Chapter 15.36 “Historic Preservation”**
 - New Additions Shall Not Destroy Historic Materials
 - New Work to be Differentiated from the Old and Shall be Compatible With Massing, Size, Scale and Architectural Features
 - New Additions Should Not Create a False Sense of Historic Development
 - Each Property Shall be Recognized as a Physical Record of its Time, Place and Use.

Guiding Principles – Louisville Municipal Ordinance

- Proposed alteration shall be visually compatible with designated historic structures located on the property in terms of design, finish, material, scale, mass and height.
- Each property shall be recognized as a physical record of its time, place and use. Changes that create a false sense of historical development, such as adding conjectural features or architectural elements from other buildings, shall not be undertaken.
- New additions, exterior alterations or related new construction shall not destroy historic materials that characterize the property. The new work shall be differentiated from the old and shall be compatible with the massing, size, scale, and architectural features to protect the historic integrity of the property and its environment.
- New additions and adjacent or related new construction shall be undertaken in such a manner that if removed in the future, the essential form and integrity of the historic property and its environment would be unimpaired.

Guiding Principles – Design Response

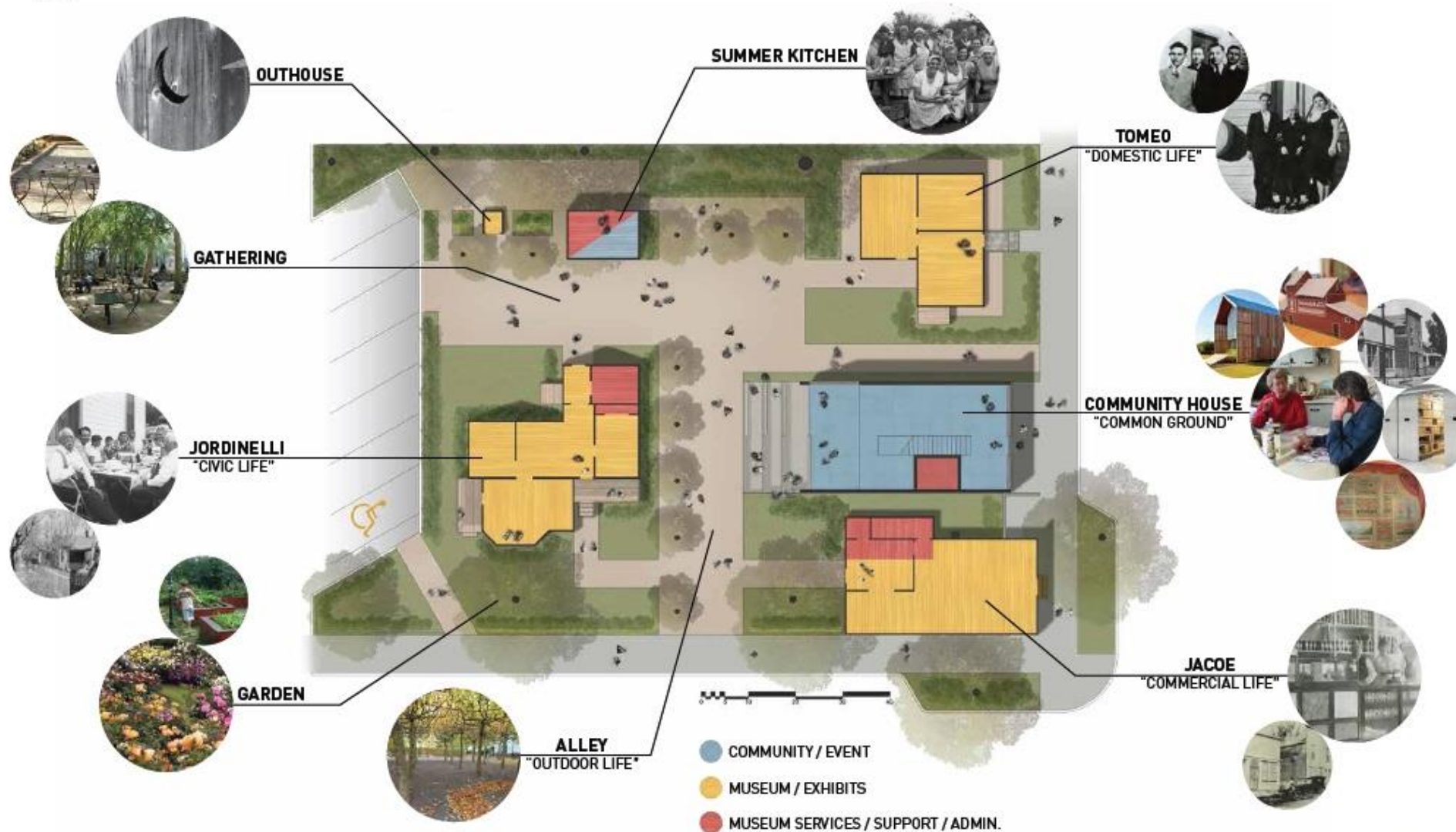
- Reflect Scale and Proportion of City Architectural Character
- Respect Historical Architectural Context of Campus
- Visually Compatible to Historic Structures – Design / Finish / Material / Scale / Mass and Height
- Provide Full ADA Campus Accessibility
- Incorporate Community Gathering within Campus
- Create Street Level to Reinforce Pedestrian Scale
- Scale / Mass / Form -Greatest Design Influences
- ADA Accessibility – Strong Design Determinate
- Maintaining Void in Facade – Historic Consistency
- Establishment of a Strong Campus Connection to Main Street

Guiding Principles – Design Concepts

- Design scale and proportion are respected in the Main St façade
- Height of the building – similar to historic precedent
- Detached Jacoe buildings from new structure with a neutral glass connector
- Window opening on Museum is an extrusion of the Jacoe Bldg.
- Horizontal lines are reflected in Museum canopy and window mullions
- Proposed use of common materials – placed in horizontal layout
- Conformed to Master Plan Concept
- Campus wide ADA accessibility achieved



Existing Campus Site Plan



Approved Campus Masterplan

Examples – Design Response



A D D I T I O N S T O H I S T O R I C B U I L D I N G S



Western Storefront
Facade

Horizontal
Cornice Line

Horizontal wood
siding

Horizontal wood trim

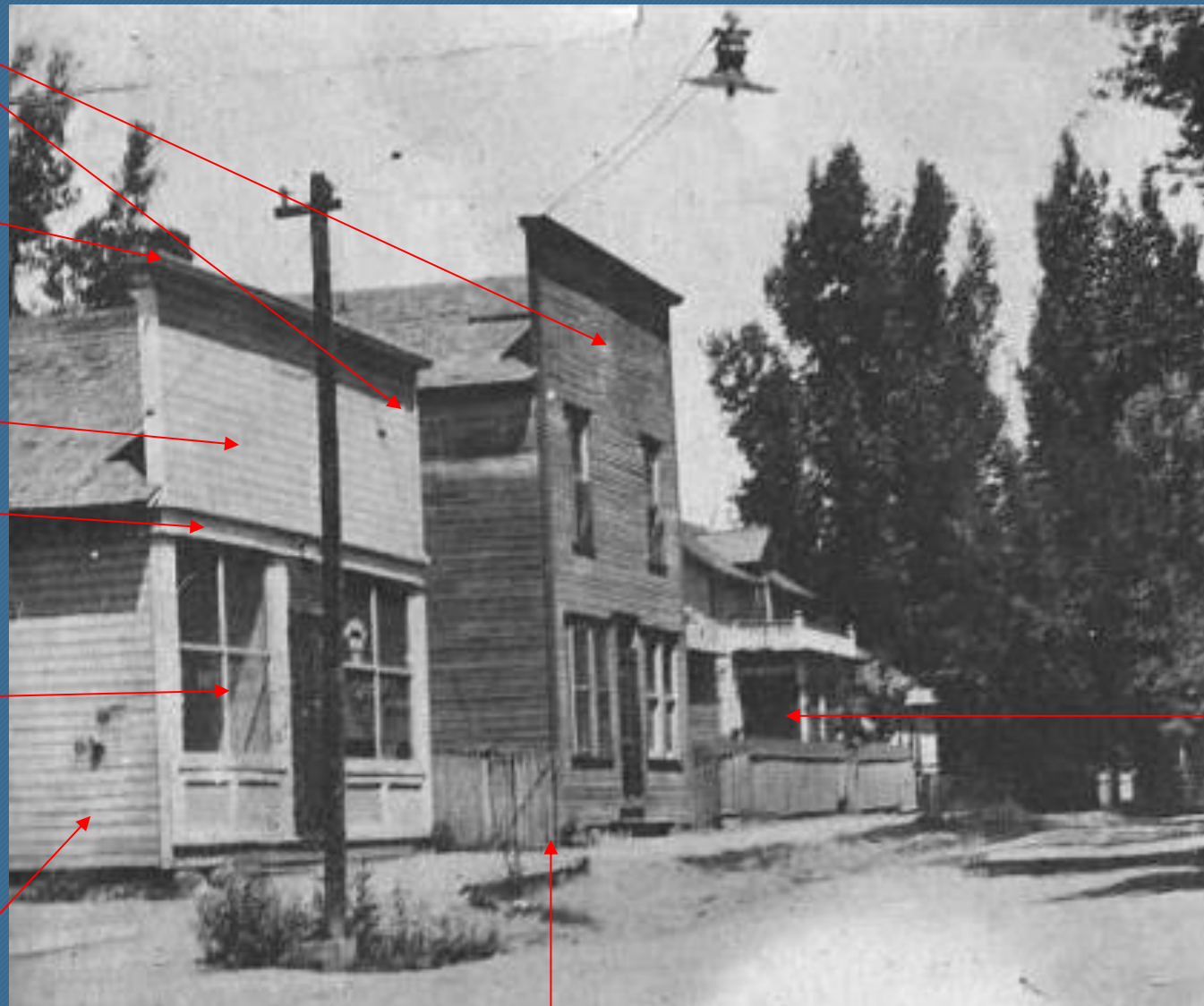
Window
proportions

Existing
Jacoe Building

Location of the New
Museum / Visitor Center

VISUAL
CUES FROM
THE PAST

Adjacent
Residential
House



Historic Photo



Current Facility

LOUISVILLE HISTORICAL MUSEUM

PROGRAM DEVELOPMENT

5/15/17

??

COMMUNITY HOUSE #1 "Common Ground"

??

SF

BASEMENT LEVEL

Elevator/Stair Core	72	SF
Elevator Room	64	SF
Main Stairway	90	SF
Mechanical Room	64	SF
Storage Room	55	SF
Museum Dedicated Archives Space	480	SF
Interpretive Exhibit Area	325	SF
Subtotal Basement Level	??	1,150 SF

MAIN LEVEL

Elevator/Stair Core	72	SF
Men's/Women's Restrooms	215	SF
Circulation	80	SF
Information Desk/Reception	100	SF
Main Stairway	90	SF
WOW Display Area	55	SF
Community Table	120	SF
Mini Theatre	78	SF
Area for Classes, Programs, Meetings, Workshops	340	SF
Subtotal Main Level	??	1,150 SF

SECOND LEVEL

Elevator/Stair Core	72	SF
Main Stairway	90	SF
Staff Office Area	160	SF
Kitchenette	50	SF
Research Area	128	SF
Circulation	100	SF
Multipurpose Area/Changeable Exhibits	500	SF
Interpretive Exhibits	50	SF
Exterior Balcony	150	SF Excl
Subtotal Second Level	??	1,150 SF

TOTAL NEW COMMUNITY BUILDING

??

??

??

3,450 SF

Building Footprint

52

X

22

1144

Community Building Program

CAMPUS FACILITIES

TAMEO HOUSE 27' Domestic Life"

?

SF

Kitchen

Bedroom

Main Living Area

JACOBI BUILDING 27' Commercial Life"

?

SF

Main Exhibit Area

Connection to New Community Building

?

JORDINELLI HOUSE 27' Civic Life"

?

SF

Entry

Model Area

Exhibit Rooms

SUMMER KITCHEN

?

SF

Kitchen

OUTHOUSE

?

SF

?

ALLEY 27' Outdoor Life"

?

SF

SITE FACILITIES

?

SF

On Site Parking Spaces 6

HC Parking Spaces 1

Plaza Area / Outside Gathering Grounds

?

Campus
Program

Campus Wide Exhibit Space

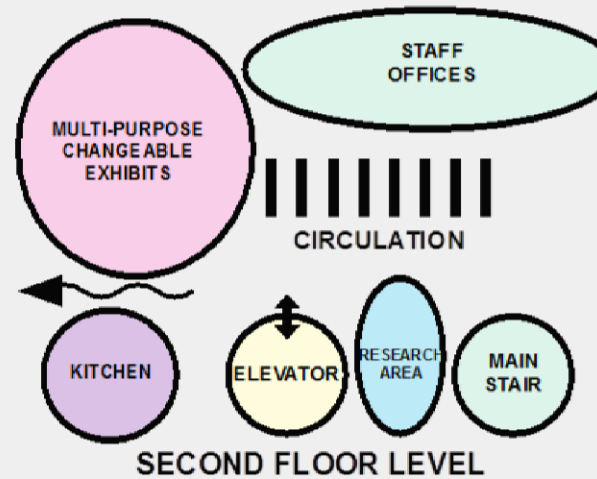
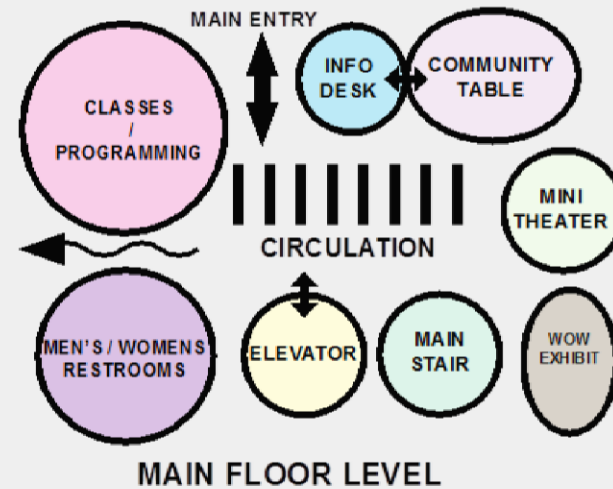
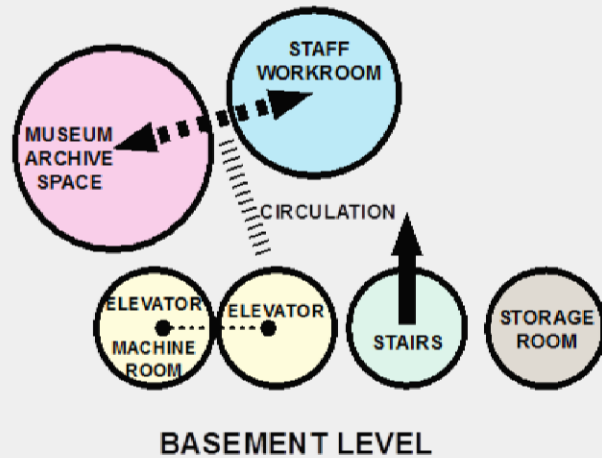
Tameo House	924 SF
Jordinelli House	525 SF
Jacoe Building	609 SF
New Museum	<u>1000 SF</u>
TOTAL CAMPUS	3,058 SF

Anticipated Storage Requirement (½ Exhibit Area)

$$1,529 \text{ SF} / 2 \text{ (Space Saver Efficiency)} = 795 \text{ SF}$$

Concept Design Storage Space Provided	1000 SF
Potential Expansion	<u>1400 SF</u>
TOTAL Potential	2,400 SF

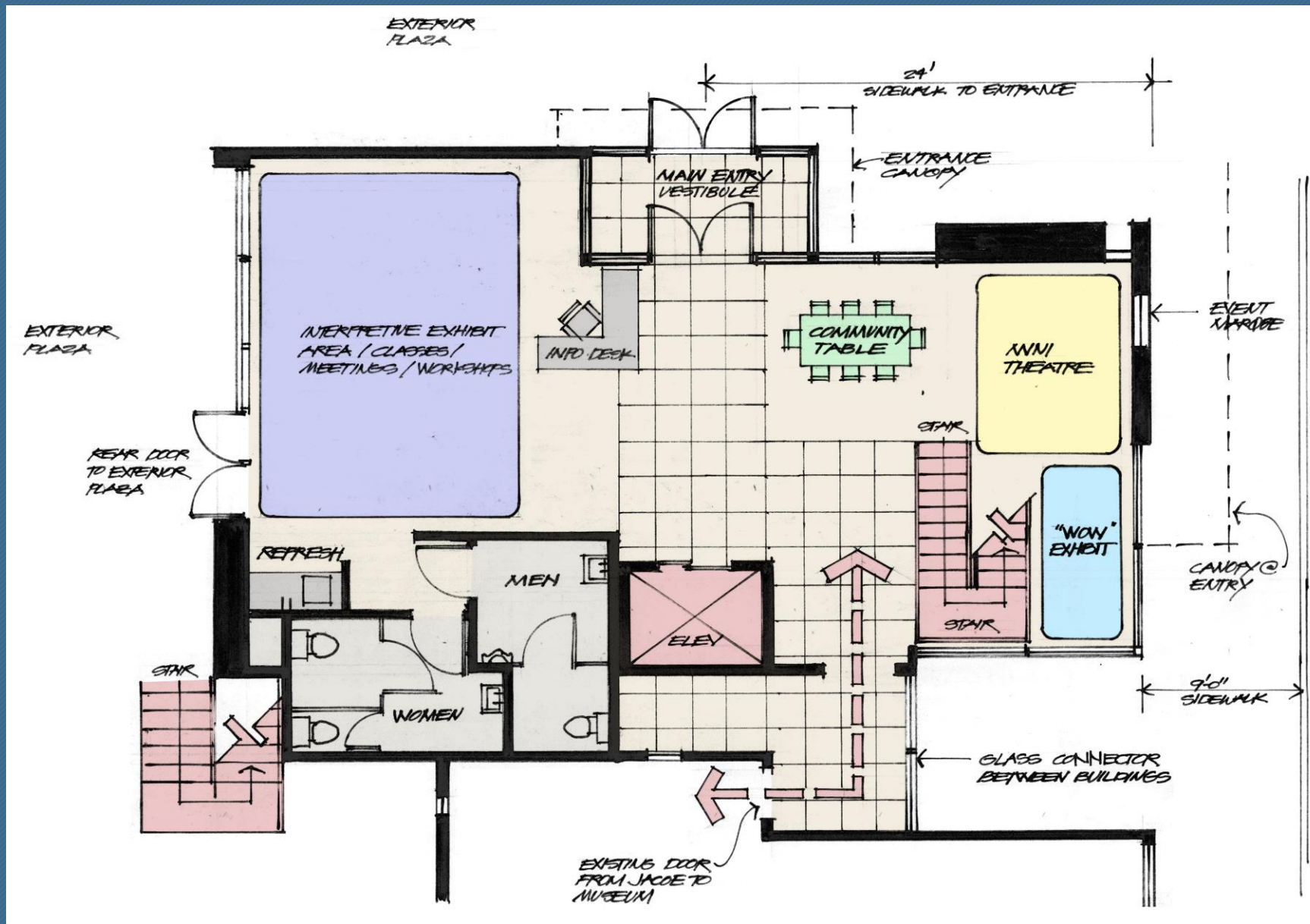
Exhibit Storage Analysis



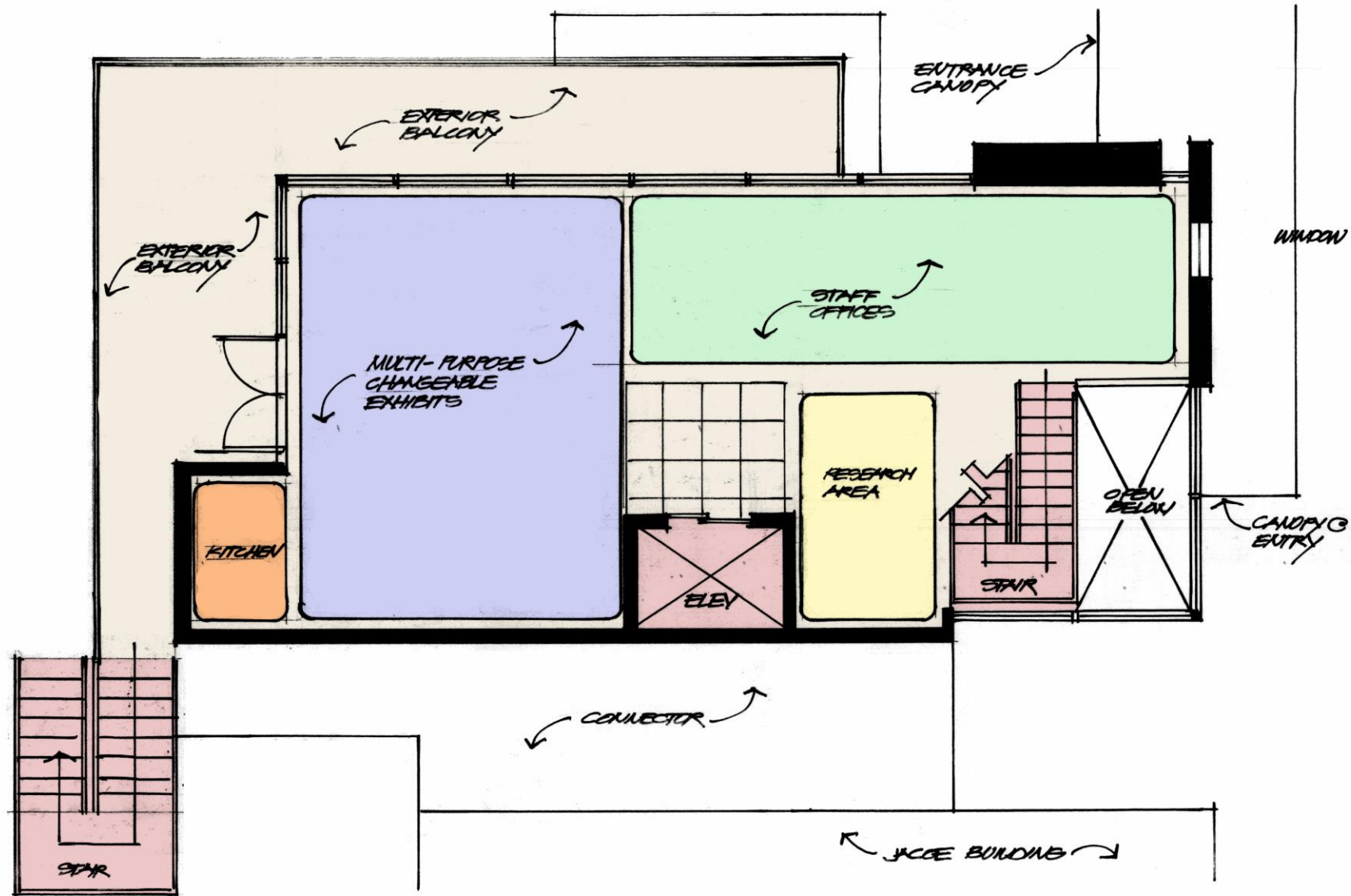
LOUISVILLE HISTORICAL MUSEUM

PROGRAM ELEMENTS

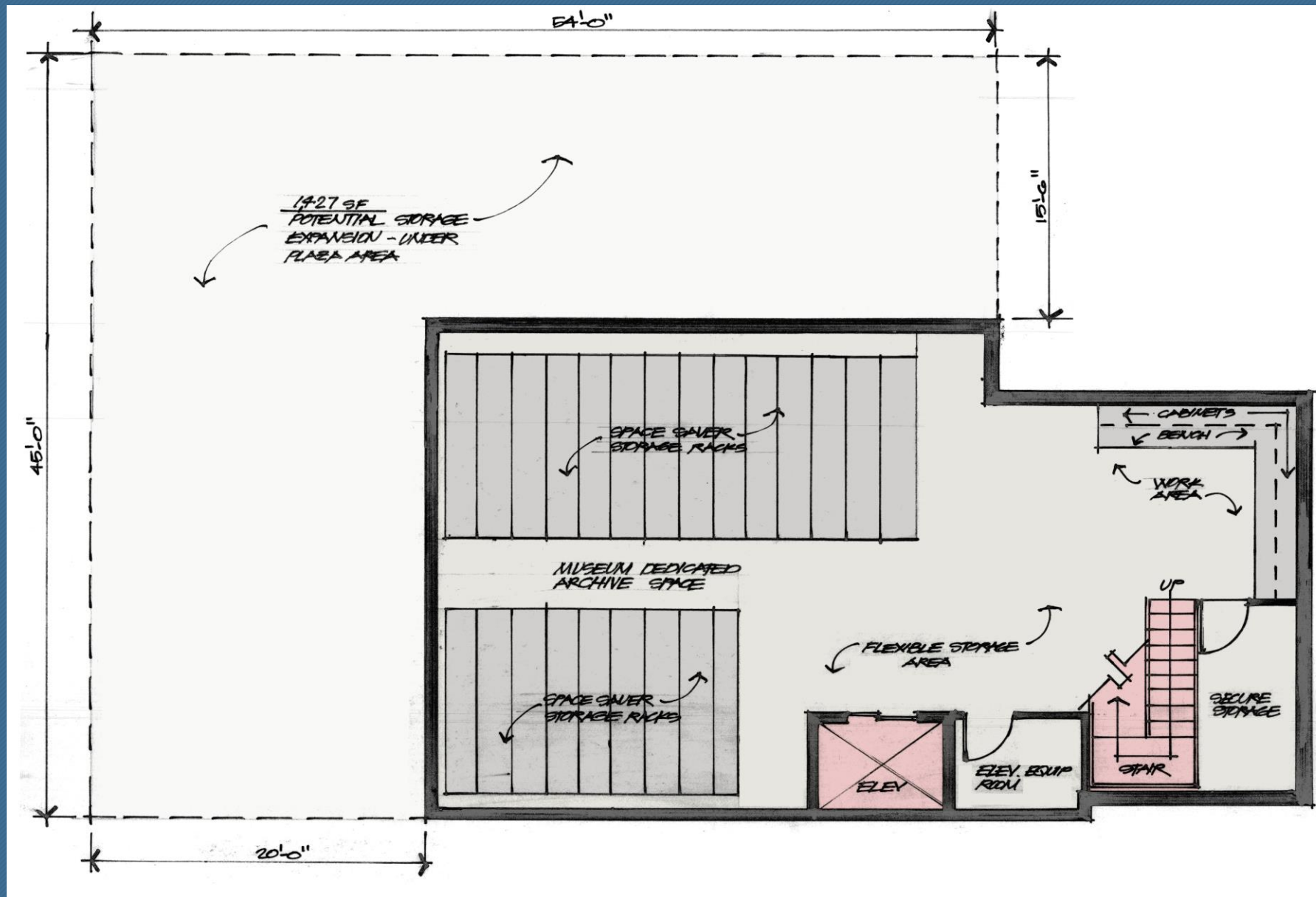
Affinity Diagram



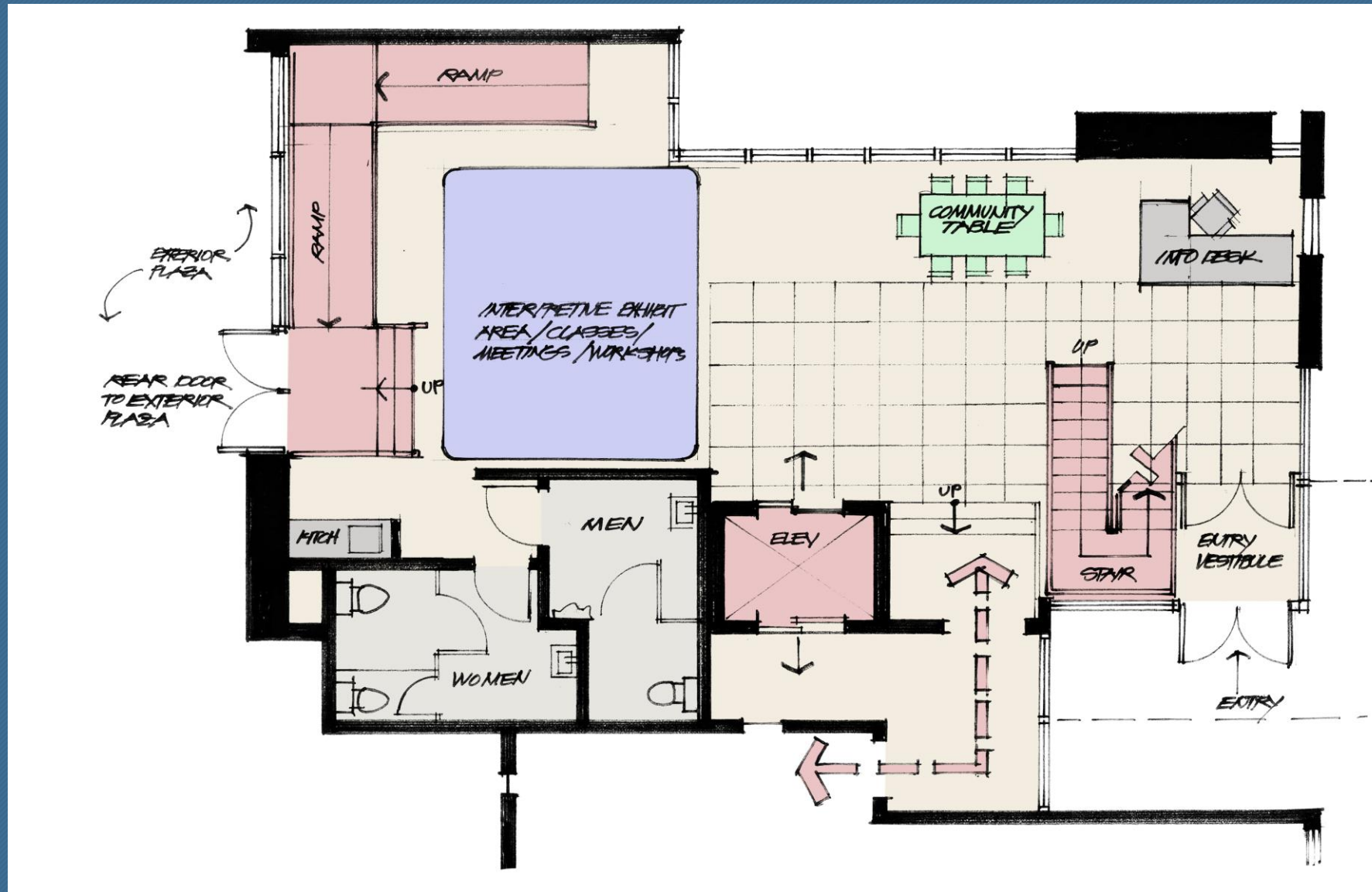
Main Level Concept Plan



Upper Level Concept Plan



Lower Level Concept Plan



4 stop Hydraulic Elev 25% premium
Cost= \$118,625

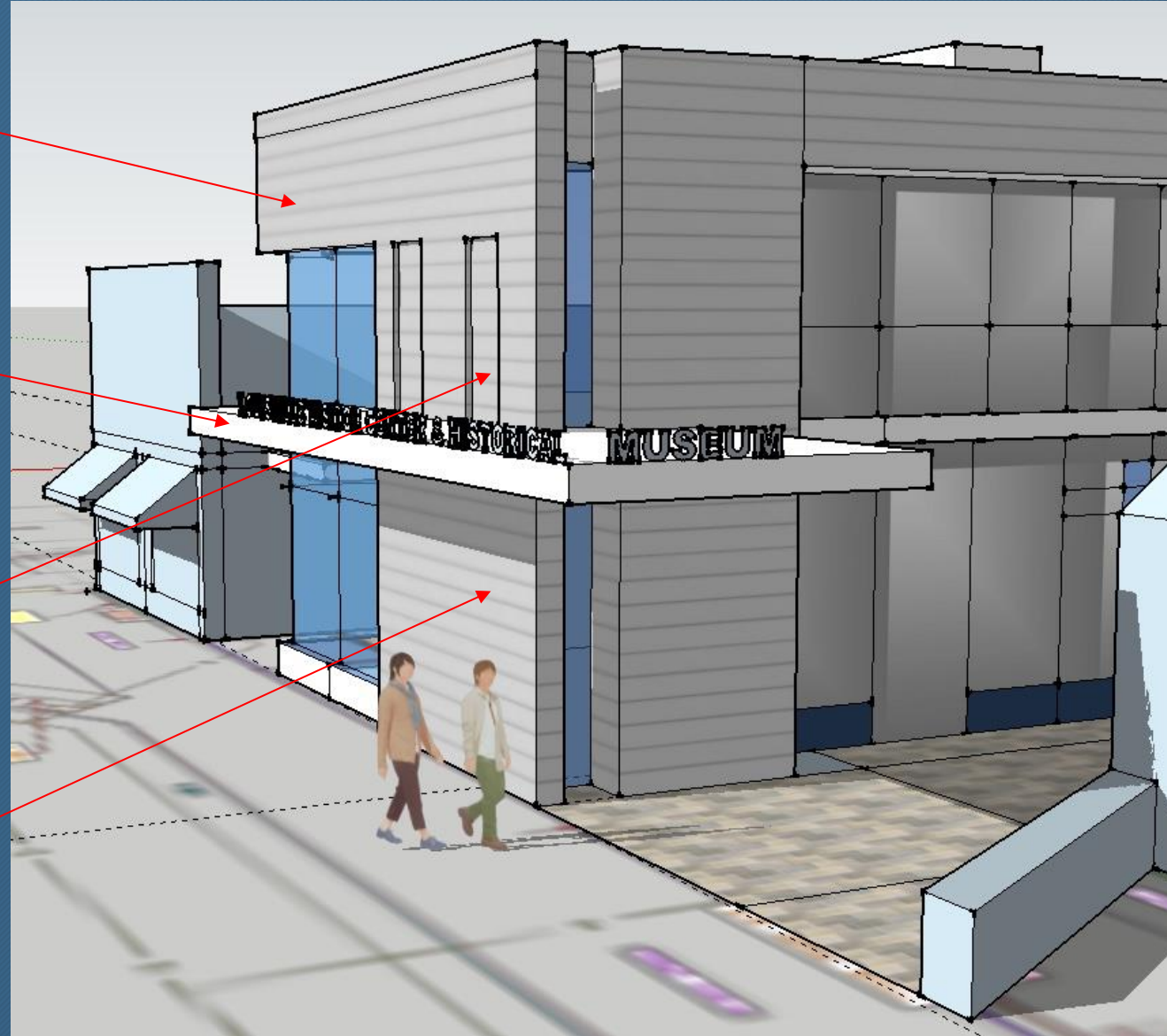
Main Level – Ramp Alternate

Consider using a rustic / reclaimed horizontal wood siding

Horizontal canopy is current day interpretation of the fabric canopy

Provide façade insets to represent window impression

Define an historic "Western Storefront Facade"



This Conceptual Design Drawing is based on Community Feedback at the Open House Meeting

Additional Conceptual Ideas



Overhead View



Street Elevation



View at Main Entry

Welcome- OPEN HOUSE

WE WELCOME YOUR FEEDBACK !