



7 JES TRAILS

Wellness path around the perimeter of Jericho Elementary School provides a lovely place for children to explore nature, or for walkers to stroll through tree canopy to catch a breath of fresh air.



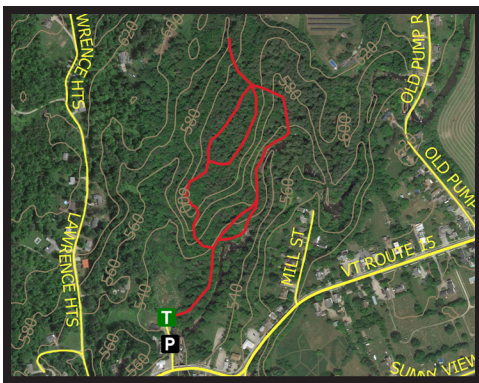
ABOUT THE JERICHO TRAILS COMMITTEE

The Jericho Trails Committee works to maintain and facilitate the connection of existing non-motorized trail networks, educate neighbors regarding trail access and use, and to develop bike/pedestrian recreational trail access. The JTC works in an advisory capacity to the Select Board. JTC meetings are open to the public, contact us for time and location. For questions regarding trail use, safety, or conditions, contact the Jericho Town Clerk; (802) 899-4936 or jerichovermont@yahoo.com.



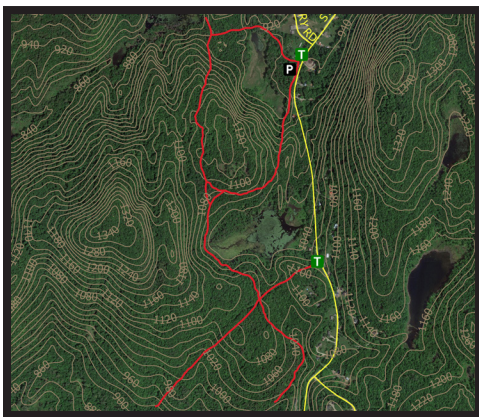
TRAILS MAP

Wolfrun Trails (see inset)



1 OLD MILL TRAILS

The Old Red Mill in Jericho features a 1/2 mile trail along a stream with huge boulders, waterfalls and open pools. White pine, hemlock, and unusual rock formations make this a unique and beautiful hike. Parts of the trail are steep, dogs on leash ok. Open daily to the public from dawn to dusk.



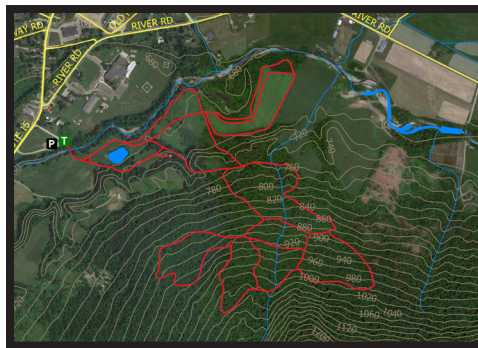
2 WOLFRUN TRAILS

Different trail segments include a gentle walk on an old logging road past stone walls and young forest; a rugged walk past two wetlands and steep, rocky outcrops; a short spur trail to a series of rock cairns; and a steep, wet trail that descends through forest to a pond and parking.



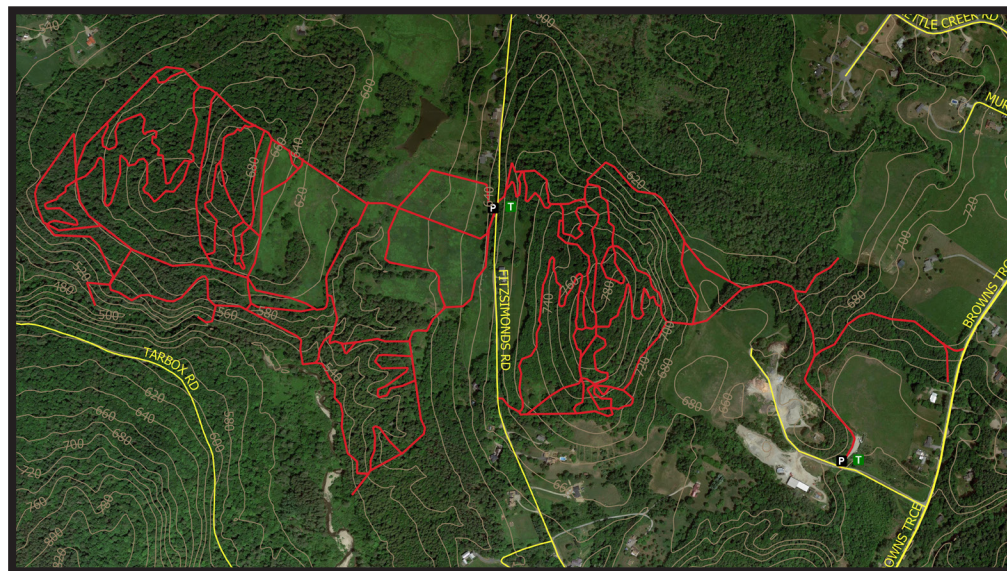
3 KIKAS VALLEY AND BARBER FARM TRAILS

Walking trails circle active farm fields and enter the adjoining woods. There is also a VAST section during winter. Park in a small lot just before the first house on the left. The Barber Farm trails are accessed via a spur in the woods. Walk the western edge of the fields, enjoying beautiful views.



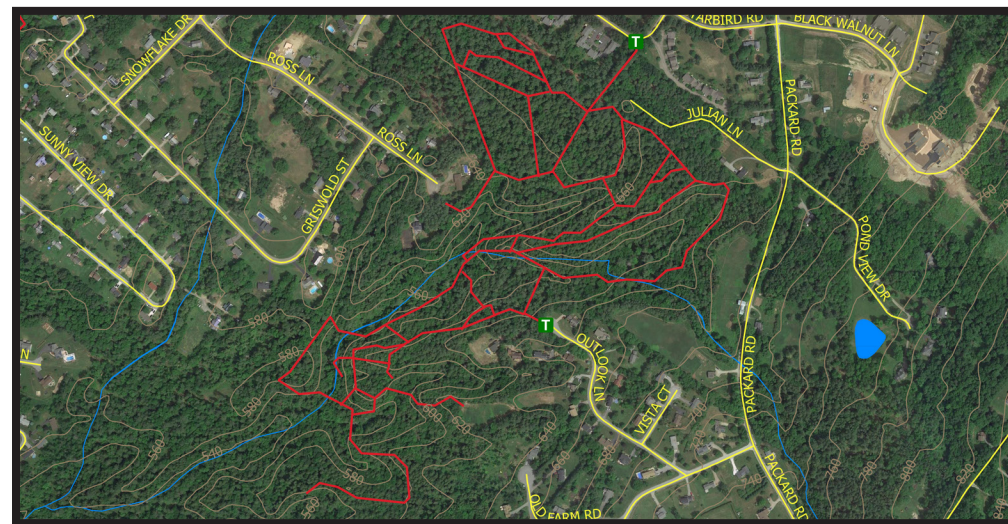
4 MILLS RIVERSIDE PARK

216 acres of meadowland and forested hillside provide varying hike distances and difficulties. Off leash area for dogs available east of the pond with flat terrain and beautiful views. Hill trails provide single track hiking and biking. Six total miles of trails with field, pavillion, pond, and river access.



5 MOBBS FARM TRAILS

Valley trails include 5 miles of open fields and both hard and soft-wood forest sections. Some trails wind along Mill Brook where there is a bench to sit and enjoy the water. Wooded hill trail section offers 4 miles of steeper terrain. Fitzsimonds Rd parking is limited, consider parking at 510 Browns Trace.



6 JERICHO TOWN FOREST

The Town Forest offers criss-crossing trails providing connectivity to Outlook Ln, Starbird Rd, and Ross Ln. Near Starbird Rd. trails are mostly flat; remaining trails are undulating with varying difficulty and steepness. The brook trail segment is particularly worth finding. A limited amount of streetside parking is available on Starbird Rd.

