

WELCOME

In her book, *A Slow and Certain Light*, Elizabeth Elliot tells of two adventurers who stopped by to see her, all loaded with equipment for the rain forest east of the Andes. They sought no advice, just a few phrases to converse with the Indians. She writes: "Sometimes we come to God as the two adventurers came to me -- confident and, we think, well-informed and well equipped. But has it occurred to us that with all our accumulation of stuff, something is missing?"


I wonder if Ms. Elliot isn't right: Do we often ask God for too little? We know what we need—or at least we think we do. We most likely would prefer a yes or no answer to a simple question. Maybe you'd prefer a road sign, something quick and easy to point the way. But what we really ought to have is the Guide Himself. Maps, road signs, a few useful phrases are things, but infinitely better is someone who has been there before and knows the way.

Welcome to Springdale Adventist Fellowship, where today, and every Sabbath, we see the Guide who can lead us home. As we worship God together, may His guiding presence be felt in your life and heart.

Pastor Ben

SAF SOCIAL

Connect and continue the conversation with us socially...

 www.gosaf.com - Keep in touch with the very latest from SAF

 SpringdaleAdventistFellowship - Check in and give us a **LIKE**

 @gosafellowship - Share your pics with us

 Springdale Adventist Fellowship - Catch up or enjoy again

 Coming soon... With programming live and on demand

4001 Don Tyson Parkway | Springdale, AR 72762 | 479.751.5817

WORSHIP

TODAY'S MESSAGE

"What Not to Wear"

Colossians 3:12-14 | Elder Larry Holliman

October 5, 2019

THE WELL (Contemporary Worship) | 9:00 am

BIBLE STUDY CLASSES | 10:00 am

WORSHIP SERVICE (Blended) | 11:00 am

11:00 am Worship

WE WORSHIP WITH SINGING

Praise Team

WELCOME

Elder Larry Holliman

WE WORSHIP BY GIVING

SAF Ministries and Outreach

The offerings given this week are used to support the mission and outreach ministries of this church. Our ministries include community outreach, health awareness programs, youth and children's ministries, Christian education, and more. Our goal each month is \$8,064.00. Thank you for your faithful support of our mission.

MUSIC FEATURE

Shelbi Lynn Menke

CHILDREN'S MESSAGE

Eric Andersen

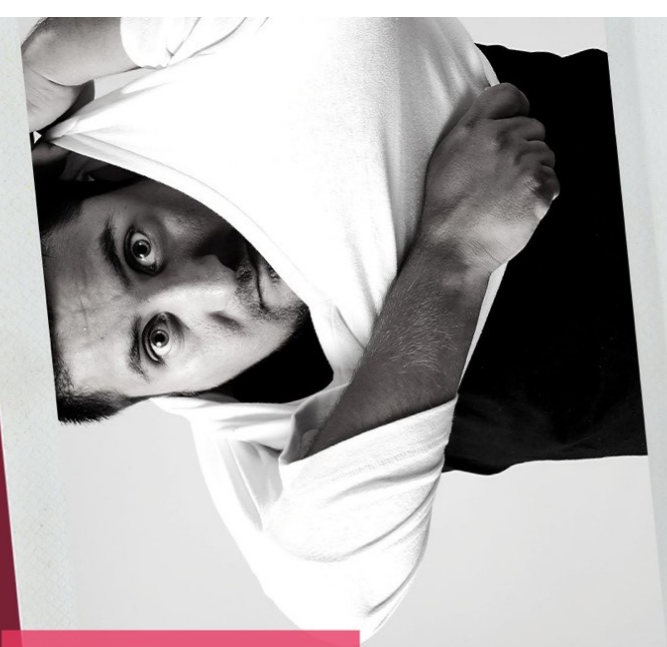
After the story, the children will come around collecting loose change offering. This offering is used to support the students of Springdale Adventist School.

WE WORSHIP IN PRAYER

Elder Faryl Boykin

THE MESSAGE

Elder Larry Holliman



**What Not
To Wear!**

TX 5063

▶ 33A

»» THIS WEEK

@ Springdale Adventist Fellowship & School

MONDAY, OCTOBER 7

10a—5p Pastor Available for Appointments
7:30a—3p SAS School Office Open /Week of Prayer
6:00p School Board Meeting

TUESDAY, OCTOBER 8

10:00a—5p Pastor Office, Available for Appointments
7:30a—3p SAS School Office Open / Week of Prayer

WEDNESDAY, OCTOBER 9

Pastor Writing & Study Day
7:30a—3p SAS School Office Open /Week of Prayer
6:30p Mid-week Bible Study / Prayer Meeting
6:30p Pathfinders & Adventures

THURSDAY, OCTOBER 10

10:00a—2p Pastor Available for Appointments
7:30a—3p SAS School Office Open / Week of Prayer

FRIDAY, OCTOBER 11

Pastor's Preparation Day
7:30a—12p SAS School Office Open /Week of Prayer
6:46p **Sabbath Begins**

SATURDAY, OCTOBER 12

9:00a "The Well" Service
10:00a Bible Study and Sabbath School
11:00a Worship Service
6:44p **Sabbath Ends**
7:00p Craft Fair Vendor Set Up in Gym

SUNDAY, OCTOBER 13

8a—6p Craft Fair! Food Served 11-1p & 4-6p

MONDAY, OCTOBER 14

8a—6p Craft Fair! Food Served 11-1p & 4-6p
6:00 pm Craft Fair Over

Your Help Would Be Greatly Appreciated for Setup Sat Nite and/or During Craft Fair Sun & Mon. Thank You!

To see a our full calendar, go to our website at gosaf.com for all our upcoming ministries, events, and programs.

INSPIRE

»» NEWS NOTES

FELLOWSHIP LUNCHEON | Today

You are invited to join us for our Fellowship Meal immediately following Second Service. Next Sabbath (October 12) will be our All-Church Vegetarian Potluck. Please bring a dish to share.

SAS WEEK OF PRAYER | October 7-11

This week Pastor Ben will be doing the Fall Week of Prayer at SAS. Please keep the students and Pastor in prayer.

CHURCH MEMBERSHIP | Now

Our church membership has been divided into smaller segments we are calling, at least for now, "mini-parishes." Each parish will be led by an assigned Elder. The goal for these parishes is to grow spiritually, develop leadership and ministries, and to care for one another of brothers and sisters in Christ. To see which Parish you are in, a complete list has been posted on the Welcome table in the church foyer. More detailed information will be coming soon, but in the mean time, if you have a question about your parish, contact either your assigned Elder or the Pastor.

MINISTRY OPENING |

Springdale Adventist Fellowship is looking for someone interested in producing the weekly church bulletin. With Jana Shepherd's work load at the school, we need someone else to step up in the church. Please talk with Pastor Ben as soon as possible..

SAS CRAFT FAIR | October 13-14

Springdale Adventist School is hosting a Community Craft Fair next Sunday & Monday October 13-14. Set up will be done Saturday, October 12 at 7:00p. We would appreciate anyone available to help move some tables, make final touches, and direct/assist vendors as needed. Remember, this is a new fundraiser for the school; not only is the school represented, but so is the church. Jennifer Ross has worked hard to get an awesome variety of vendors; most who are not SDA church attenders. Great witnessing time! We could also still use donated items for the school's Country store. It can be baked goods, jars of honey, or just any country store type stuff. Please join us Sun/Mon for lunch & supper buffet. Serving food 11a-1p & 4-6p. Questions? See Jana or Jennifer.

PASTOR OUT OF TOWN | October 12-24

Pastor Ben will be out of town the week of October 12-24. If a need or emergency arises, please contact an elder.

CONNECT

»» SERMON SERIES



BE THE SWITCH

Living Your Calling While Living Your Life

Everyday, people live lives that they feel do not have a purpose. What happens when Christians struggle with the question, "What is my purpose?" Or, "How can God use me? I'm a nobody!"

As believers in Christ, we all have a calling. And while that calling may not be to go to Africa or enter into full-time pastoral ministry, your calling is still very much relevant and ever-so important. In this series we're going to take a look at what it means to make an impact right where you are in your life and how to discover what you're called to do.

Get ready to be the switch!

TOPICS:

- Nov 2 The Basic Design
- Nov 9 Circuit Breakers
- Nov 16 Under the Lights
- Nov 23 Don't Be a Dimmer

PREACHING SCHEDULE

October 12	Pastor Ben	"Faith Interrupted"
October 19	Drew Eason	
October 26	1st Service Pastor Ben 2nd Service Doug Schoch	

IMPACT