

PALM  TECH

home inspection software

V E R S I O N 9

HOW TO:

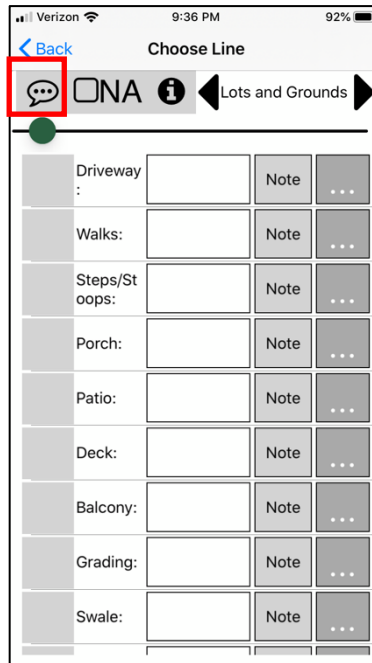
Add Disclaimers to Inspections on the App

This step by step How To article explains how to add disclaimers to inspections on the app.

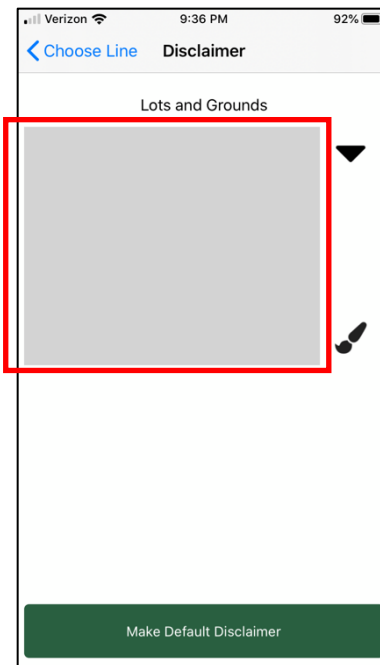
For a complete list of available How To documents, visit the Support section of our website: www.palm-tech.com/support/

HOW TO: Add Disclaimers to Inspections on the App

1. The first step is to tap on the 'Disclaimer' icon at the top of the category you want to add a disclaimer to.

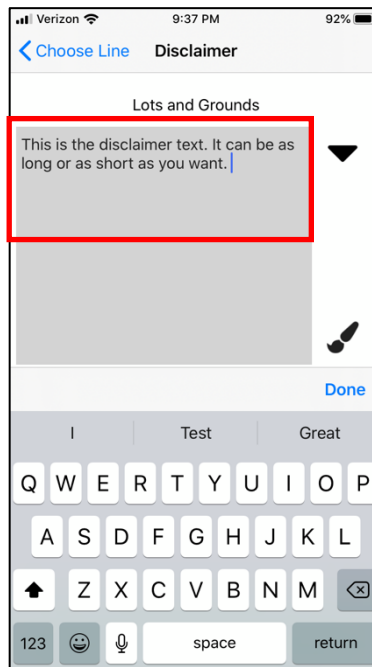


2. This will bring up the 'Disclaimer' screen. To add in a disclaimer tap in the entry box.

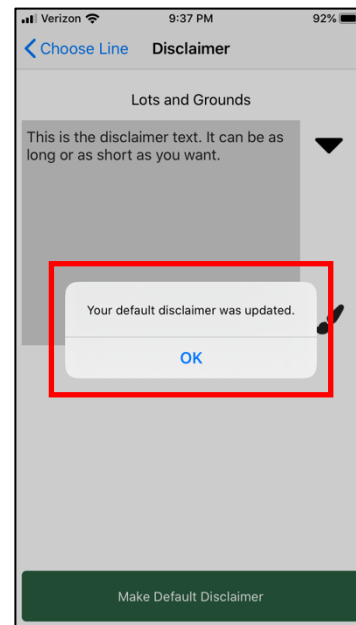


HOW TO: Add Disclaimers to Inspections on the App

3. This brings up your devices keyboard where you can type in the desired disclaimer.



4. If you would like the disclaimer you entered to appear for this category with all new inspections you create moving forward, tap the 'Make Default Disclaimer' button. After you tap this a message will appear letting you know the new default disclaimer has been set.



HOW TO: Add Disclaimers to Inspections on the App

5. Once you have finished entering your disclaimer tap the 'Choose Line' button in the top left corner of the screen to go to the previous screen.

